

Sheds and Garages

V4 ROLLER DOOR LOCK

APPLICATION

- Garage roller doors

FEATURES & SPECIFICATIONS

- Fascia features two pockets which provide grip to lift or lower door
- Retractable locking arms feature mounting holes for locking rods
- Locking arms operable by key externally, or latch internally (19mm throw)
- Key removable in horizontal position only (to allow for operation of internal latch override)
- Turn key 90° clockwise to unlock, turn key 90° anti-clockwise to lock
- Zinc diecast lock and fascia, steel locking arms

KEYING

- Double entry 19 key series, 100 combinations, non-master keying

CODE INFORMATION

Latch Options

Flush latch	3
Finger grip latch	6

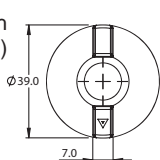
Logo Options

Lock Focus Logo, clip in plate	LF
Custom Logo, clip in plate, black/white lettering	customer specific MOQ applies

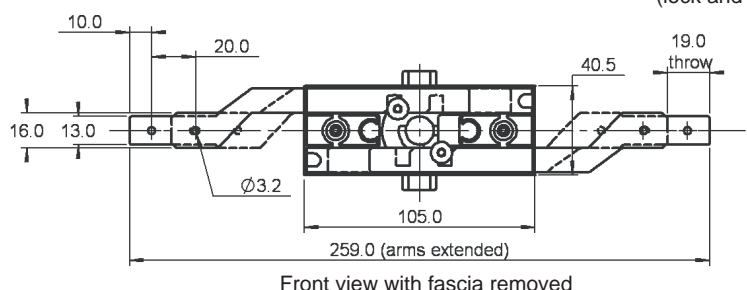
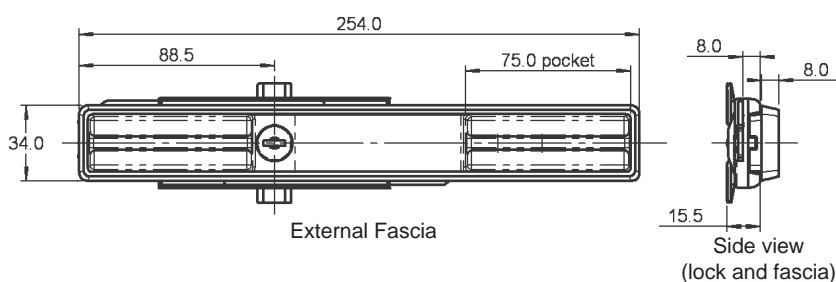
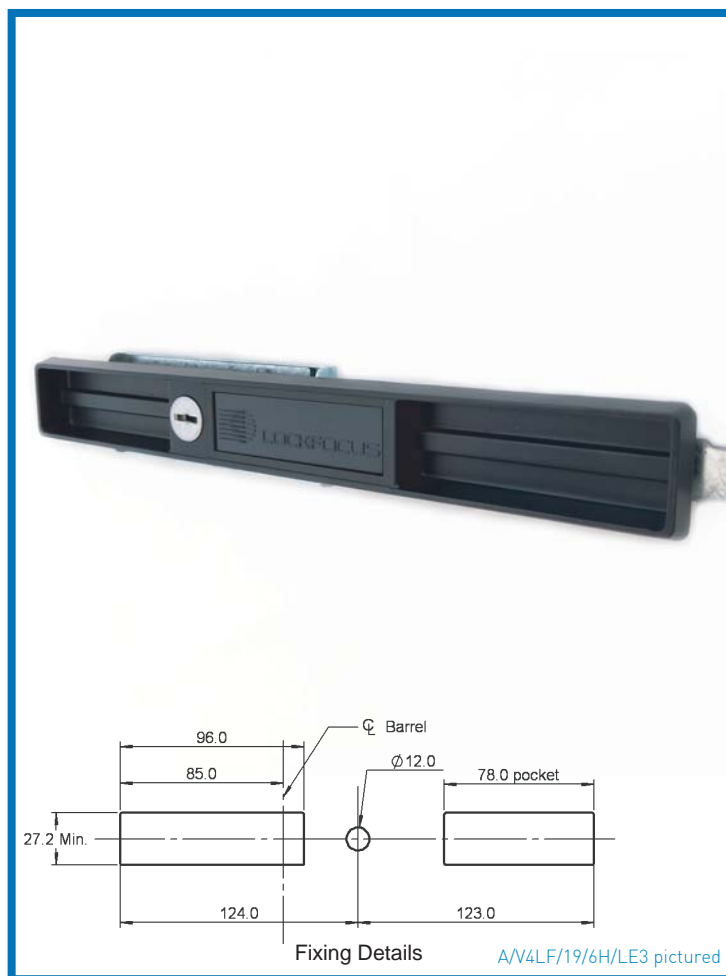
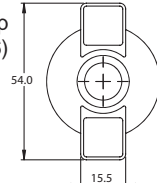
Arms

Standard, 259mm extended arm span	-
Extended, 336mm extended arm span	E

Flush Latch (3)



Finger Grip Latch (6)



ORDERING DETAILS

A/V4+logo/19/6H/L+arm+latch Ordering example: A/V4LF/19/6H/L-3 Retail code: AR/V4P-/19/6H/LE3



LOCKFOCUS
CREATING SOLUTIONS SINCE 1972

FREE PHONE: 1800 687 116
Email: sales@lockfocus.com.au

15-17 Futura Road, Keysborough 3173
Melbourne Victoria Australia
T: 61 3 9798 1322 F: 61 3 9798 9652
www.lockfocus.com.au

LOCK FOCUS CREATING SOLUTIONS SINCE 1972