

*tulisan™*

# DIAGONAL DAYNIGHT



**AR**  
FARAND  
RASYID  
HAZFANUR

*tulisan*<sup>™</sup>

# SHOP ONLINE.

**PT TULISAN SUSUNAN TINTA**

*info@tulisan.com*

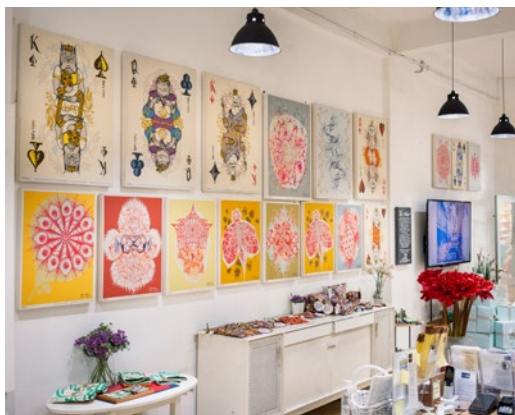


## DS.

**DARMAWANGSA SQUARE**

Ground Floor #24  
Jalan Darmawangsa VI  
Jakarta 12160  
Indonesia

P. +62 21 7278 0235



## PS.

**PLAZA SENAYAN**

Level 3, No. 321C  
Jalan Asia Afrika No. 8  
Jakarta 10270  
Indonesia

P. +62 21 5790 0412



# PERSONAL SHOPPERS.

**RICHARD** WA +62 815 1051 7424

**NITA** WA +62 811 8337 313

**DESI** WA +62 822 4963 3734

**ADAM** WA +62 811 8337 312

# PEDESTRIAN BAG



# PEDESTRIAN BAG

Rp1,698.000

## FEATURE

Our Pedestrian Bag is for all gender who loves walking. Comes with a dust bag.

## SIZE

26 x 13 x 44 cm | 10.23 x 5 x 17.50 in

## WEIGHT

0.7 kg

## SHOULDER STRAP

40 - 88 cm

## BPE1832-BC

*Blue Capri*



## BPE1832-BP

*Blue Parisian*



# PEDESTRIAN BAG



Our Pedestrian Bag is for all gender who loves walking. It is a slim and comfortable backpack with a zipped pocket on the backside for storing your mobile device and a small wallet. There are two loops around the top short handle for attaching our Bien strap (Bien Strap is sold separately), so you can carry it as a shoulder bag. The interior has a special padded compartment for storing a 16" laptop and deep side pockets for your tablet, pens, cables, or earphone. This bag can fit many things and is perfect for those who travel with their laptop and work files.

# BONITA TOTE



# BONITA TOTE

Rp1,648,000

## FEATURE

The shape of this bag is made with a unique origami pattern that resembles the 'Luna Tote' design but with a cubical contour. This tote bag comes with an adjustable strap and a dust bag.

## SIZE

36 x 24 x 20 cm | 14.25 x 9.5 x 8 in

## WEIGHT

0,60 kg

## ADJUSTABLE STRAP

65-125 cm

## TBO1832-BC

*Blue Capri*



# CITY TOTE





# CITY TOTE

Rp1,398,000

## FEATURE

The shape follows the traditional basket tote found in the South of France. The base is square in shape, and the content volume is spacious. Comes with a dust bag.

## SIZE

21,5 x 21,5 x 35 cm | 8,5 x 8,5 x 13,75 in

## WEIGHT

0,30 kg

## STRAP

58 cm

## TCI1832-BC

*Blue Capri*



# LARGE ANNEX POUCH



The Bien Strap Red Letter 60 cm (P) is sold separately

# LARGE ANNEX POUCH

Rp698.000

## FEATURE

A simple pouch with darts on its bottom rounded corners and a durable waterproof inner lining, giving it a sophisticated voluminous silhouette.

## SIZE

35,5 x 18 x 31 cm | 14 x 7 x 12,25 in

## WEIGHT

0,21 kg

## PAN1832-BC-L

Blue Capri



# RIDER BAG



# RIDER BAG

Rp598,000

## FEATURE

It's a belted pouch, to be worn around the waist or across the shoulder as a cross-body bag. Its simplicity makes it a perfect companion for riding, running, or walking.

## SIZE

35 x 18 cm | 13,75 x 7 in

## WEIGHT

0,2 kg

## ADJUSTABLE STRAP

78 - 132 cm

### BRD1832-BC

*Blue Capri*



### BRD1832-BP

*Blue Parisian*



# PETITE POUCH



# PETITE POUCH

Rp218,000

## FEATURE

Pouch is flat handheld bag, fastened by a top zipper closure, to carry smaller items within a larger handbag.

## SIZE

20 x 10 cm | 8 x 4 in

## WEIGHT

0,035 kg

## POU1832-BC-P

*Blue Capri*



*tulisan*™

---

# GICLÉE GAZO

---

GGA1831





# GICLÉE GAZO

Rp500.000 (Petite) | 23 x 23 x 2 cm

Rp2.500.000 (Large) | 75 x 75 x 2 cm

Rp5.000.000 (Master) | 100 x 100 x 4 cm

## FEATURE

Giclée Print—a digital print on matte canvas with museum-quality of archival standards, stretched over a wooden frame.

## GGA1831



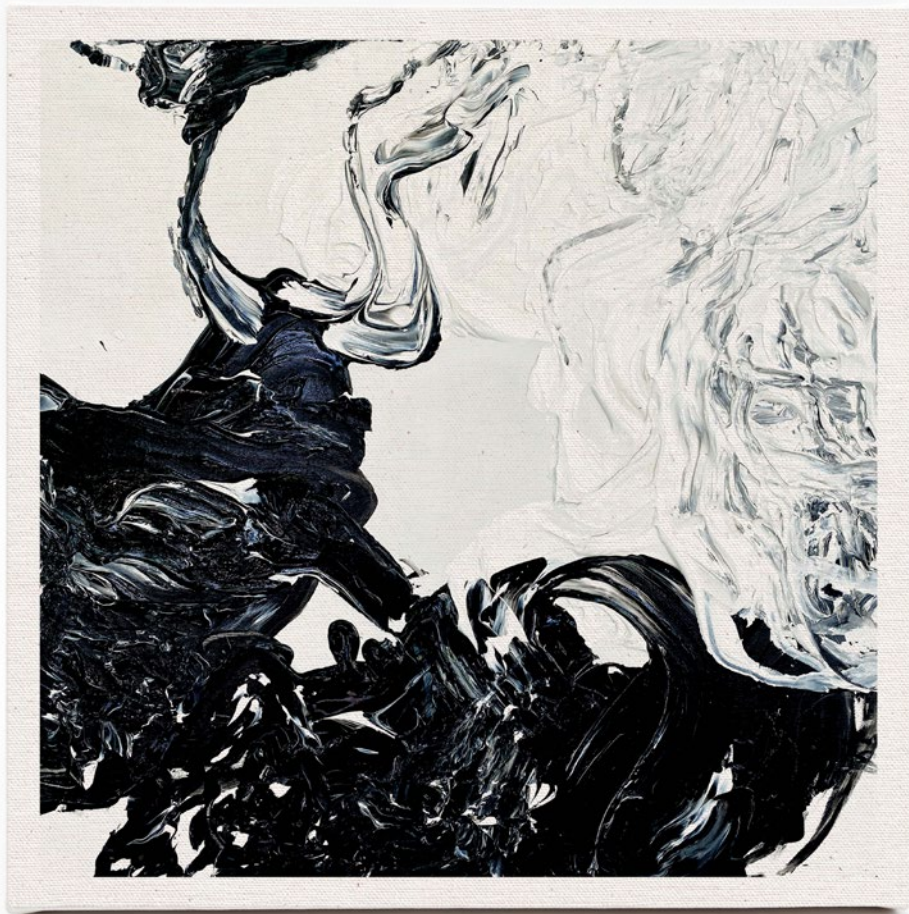
*tulisan*<sup>™</sup>

---

# GICLÉE GAZO

---

GGA1832



*tulisan*<sup>™</sup>

# GICLÉE GAZO

Rp500.000 (Petite) | 23 x 23 x 2 cm

Rp2.500.000 (Large) | 75 x 75 x 2 cm

Rp5.000.000 (Master) | 100 x 100 x 4 cm

## FEATURE

Giclée Print—a digital print on matte canvas with museum-quality of archival standards, stretched over a wooden frame.

**GGA1832**



*tulisan™*

---

# GICLÉE GAZO

---

GGA1833



# GICLÉE GAZO

Rp500.000 (Petite) | 23 x 23 x 2 cm

Rp2.500.000 (Large) | 75 x 75 x 2 cm

Rp5.000.000 (Master) | 100 x 100 x 4 cm

## FEATURE

Giclée Print—a digital print on matte canvas with museum-quality of archival standards, stretched over a wooden frame.

## GGA1833



*tulisan*<sup>™</sup>

---

# GICLÉE GAZO

---

GGA1834



# GICLÉE GAZO

Rp500.000 (Petite) | 23 x 23 x 2 cm

Rp2.500.000 (Large) | 75 x 75 x 2 cm

Rp5.000.000 (Master) | 100 x 100 x 4 cm

## FEATURE

Giclée Print—a digital print on matte canvas with museum-quality of archival standards, stretched over a wooden frame.

## GGA1834



*tulisan*<sup>™</sup>

---

# GICLÉE GAZO

---

GGA1835





# GICLÉE GAZO

Rp500.000 (Petite) | 23 x 23 x 2 cm

Rp2.500.000 (Large) | 75 x 75 x 2 cm

Rp5.000.000 (Master) | 100 x 100 x 4 cm

## FEATURE

Giclée Print—a digital print on matte canvas with museum-quality of archival standards, stretched over a wooden frame.

## GGA1835



*tulisan*<sup>™</sup>

---

# GICLÉE GAZO

---

GGA1836



# GICLÉE GAZO

Rp500.000 (Petite) | 23 x 23 x 2 cm

Rp2.500.000 (Large) | 75 x 75 x 2 cm

Rp5.000.000 (Master) | 100 x 100 x 4 cm

## FEATURE

Giclée Print—a digital print on matte canvas with museum-quality of archival standards, stretched over a wooden frame.

**GGA1836**



**AR**  
FARAND  
RASYID  
HAZFANUR



**WATCH  
THE VIDEO OF  
HIM PAINTING**



Farand Rasyid Hazfanur is a gifted young painter with a Cerebral Palsy disability. Cerebral Palsy does not prevent Farand Rasyid Hazfanur from augmenting his talents in contemporary art. This birth condition prompts severe life challenges. Farand endures disabilities in mobilising almost all of his body parts and in speaking. Despite these difficulties, Farand discovers his passion for painting. He became a Tulisan artist in residence in 2020.

TULISAN AIR 2020 (TULISAN Artist In Residence) is a program dedicated to creating a sustainable cycle of art edition for inspiring artists. Our core objective is to support and nurture the artist's potential during this residency period. We curate the artwork to manifest a collection of limited edition prints, from Giclée to other wearable art pieces which light our homes and delight our souls.