

# AR

FARAND  
RASYID  
HAZFANUR



*tulisan*



*tulisan*<sup>™</sup>

# SHOP ONLINE.

**PT TULISAN SUSUNAN TINTA**

*info@tulisan.com*



## DS.

**DARMAWANGSA SQUARE**

Ground Floor #24  
Jalan Darmawangsa VI  
Jakarta 12160  
Indonesia

P. +62 21 7278 0235



## PS.

**PLAZA SENAYAN**

Level 3, No. 321C  
Jalan Asia Afrika No. 8  
Jakarta 10270  
Indonesia

P. +62 21 5790 0412



# PERSONAL SHOPPERS.

**RICHARD** WA +62 815 1051 7424

**NITA** WA +62 811 8337 313

**DESI** WA +62 822 4963 3734

**ADAM** WA +62 811 8337 312

*tulisan™*

# LILIPUT TOTE DAYNIGHT



*tulisan*™

# LILIPUT TOTE DAYNIGHT



---

# LILIPUT TOTE DAYNIGHT

---

Rp598.000

## FEATURE

Like its name 'liliput', this is a compact shoulder tote with zipped closure. Its petite and lightweight

## SIZE

23 x 8 x 18 cm | 9.05 x 3.14 x 7.08 in

---

## TLP1832-RR

*Red Rumor*



*tulisan*™

---

# LILIPUT TOTE DAYNIGHT

---



Its petite and lightweight form makes it a practical bag for travelling essentials (to store only identity cards, wallet, and valuable documents).

# ATELIER BOX DAYNIGHT



*tulisan*™

# ATELIER BOX DAYNIGHT





---

# ATELIER BOX DAYNIGHT

---

Rp988.000

## FEATURE

'Atelier' is a French word for studio or workshop. It is used as the 'second bag' after the main pretty bag.

## SIZE

35 x 19 x 29 cm | 13.75 x 7.48 x 11.41 in

## WEIGHT

0.5 kg

---

## BAT1832-RR

*Red Rumor*



# ATELIER BOX DAYNIGHT

---



The function is a toolbox for women for storing books and craft tools. It also makes a convenient portable drawer when it is stored on a shelf or cabinet.

*tulisan*™

# TOY BOX DAYNIGHT



*tulisan*™

# TOY BOX DAYNIGHT



---

# TOY BOX DAYNIGHT

---

Rp1.148.000

## FEATURE

A large cubical storage box for organizing cabinets or beautiful household pieces, such as linens, toys, and books.

## SIZE

35 x 35 x 35 cm | 13.75 x 13.75 x 13.75 in

## WEIGHT

0.65 kg

---

## BTO1832-RR

*Red Rumor*



# TOY BOX DAYNIGHT

---



The interior uses our signature lining. This lining fabric is a highly durable water-repellent fabric created using the most advanced technology from recycled PET bottles and post-consumer materials.

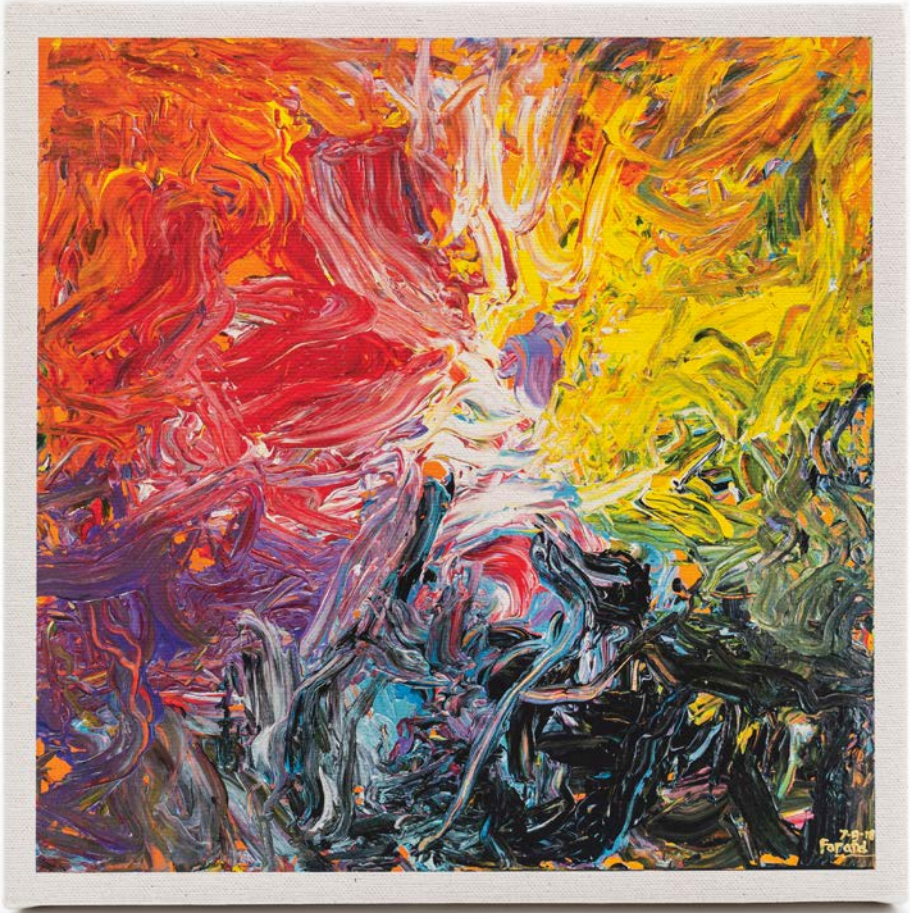
*tulisan™*

---

**GICLÉE  
GAZO**

---

**GGA1831**



*tulisan*™

# GICLÉE GAZO

Rp500.000 (Petite) | 23 x 23 x 2 cm

Rp2.500.000 (Large) | 75 x 75 x 2 cm

Rp5.000.000 (Master) | 100 x 100 x 4 cm

## FEATURE

Giclée Print—a digital print on matte canvas with museum-quality of archival standards, stretched over a wooden frame.

**GGA1831**





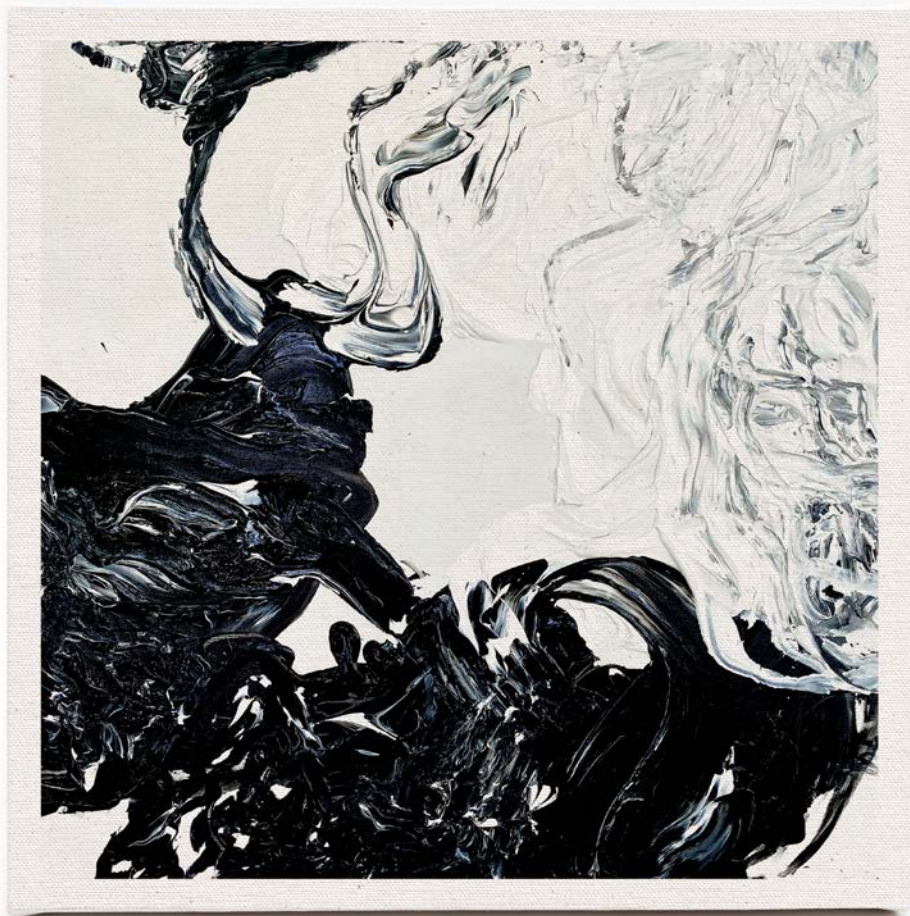
*tulisan*™

---

# GICLÉE GAZO

---

GGA1832



*tulisan*™

# GICLÉE GAZO

Rp500.000 (Petite) | 23 x 23 x 2 cm

Rp2.500.000 (Large) | 75 x 75 x 2 cm

Rp5.000.000 (Master) | 100 x 100 x 4 cm

## FEATURE

Giclée Print—a digital print on matte canvas with museum-quality of archival standards, stretched over a wooden frame.

GGA1832



*tulisan*™

---

# GICLÉE GAZO

---

GGA1833



*tulisan*™

# GICLÉE GAZO

Rp500.000 (Petite) | 23 x 23 x 2 cm

Rp2.500.000 (Large) | 75 x 75 x 2 cm

Rp5.000.000 (Master) | 100 x 100 x 4 cm

## FEATURE

Giclée Print—a digital print on matte canvas with museum-quality of archival standards, stretched over a wooden frame.

**GGA1833**



*tulisan™*

---

# GICLÉE GAZO

---

GGA1834



*tulisan*<sup>™</sup>

# GICLÉE GAZO

Rp500.000 (Petite) | 23 x 23 x 2 cm

Rp2.500.000 (Large) | 75 x 75 x 2 cm

Rp5.000.000 (Master) | 100 x 100 x 4 cm

## FEATURE

Giclée Print—a digital print on matte canvas with museum-quality of archival standards, stretched over a wooden frame.

**GGA1834**



*tulisan*™

---

# GICLÉE GAZO

---

GGA1835



*tulisan*™

# GICLÉE GAZO

Rp500.000 (Petite) | 23 x 23 x 2 cm

Rp2.500.000 (Large) | 75 x 75 x 2 cm

Rp5.000.000 (Master) | 100 x 100 x 4 cm

## FEATURE

Giclée Print—a digital print on matte canvas with museum-quality of archival standards, stretched over a wooden frame.

## GGA1835





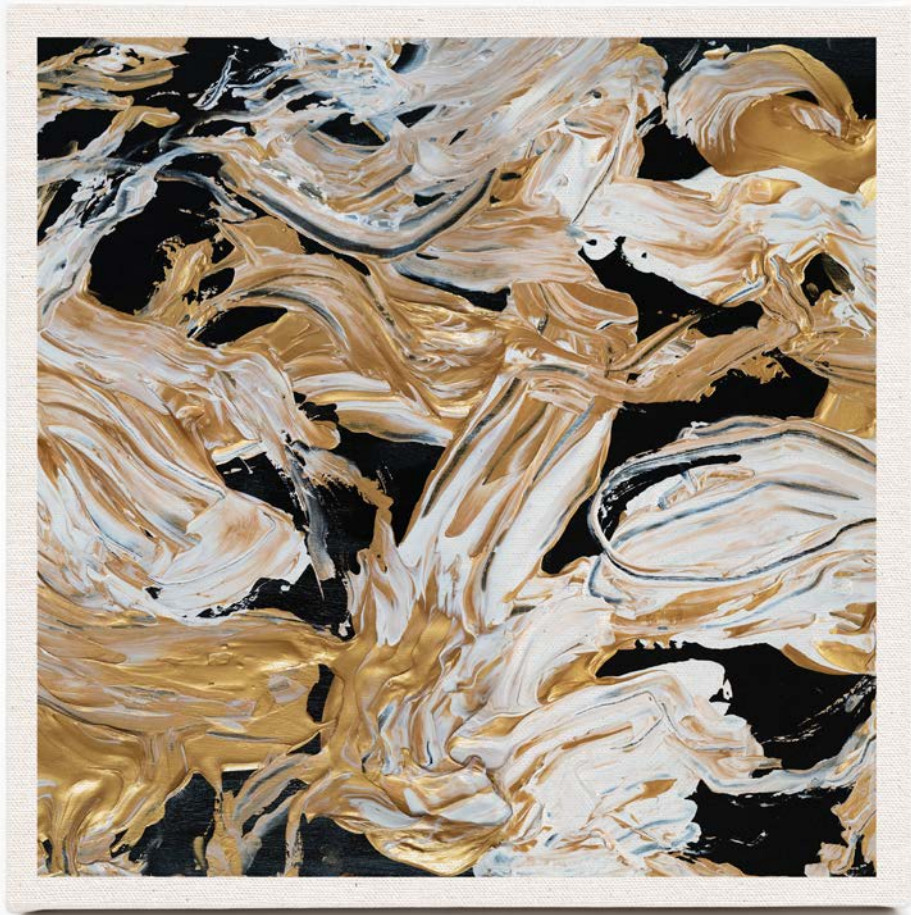
*tulisan*™

---

# GICLÉE GAZO

---

GGA1836



*tulisan*™

# GICLÉE GAZO

Rp500.000 (Petite) | 23 x 23 x 2 cm

Rp2.500.000 (Large) | 75 x 75 x 2 cm

Rp5.000.000 (Master) | 100 x 100 x 4 cm

## FEATURE

Giclée Print—a digital print on matte canvas with museum-quality of archival standards, stretched over a wooden frame.

**GGA1836**



# AIR

## FARAND RASYID HAZFANUR

Farand Rasyid Hazfanur is a gifted young painter with a Cerebral Palsy disability. Cerebral Palsy does not prevent Farand Rasyid Hazfanur from augmenting his talents in contemporary art. This birth condition prompts severe life challenges. Farand endures disabilities in mobilising almost all of his body parts and in speaking. Despite these difficulties, Farand discovers his passion for painting. He became a Tulisan artist in residence in 2020.

TULISAN AIR 2020 (TULISAN Artist In Residence) is a program dedicated to creating a sustainable cycle of art edition for inspiring artists. Our core objective is to support and nurture the artist's potential during this residency period. We curate the artwork to manifest a collection of limited edition prints, from Giclée to other wearable art pieces which light our homes and delight our souls.



**WATCH  
THE VIDEO OF  
HIM PAINTING**