





Metal Leaf Wallcovering, expressing a contemporary Japanese style.

The 1 / 10,000mm foil changes its shape beautifully and roughly, and when the gold and silver light and design are fused, it emits a novel light beautifully. By applying each piece of real metal foil into a base material centered on Japanese paper, every design really has a unique feel and an expression.

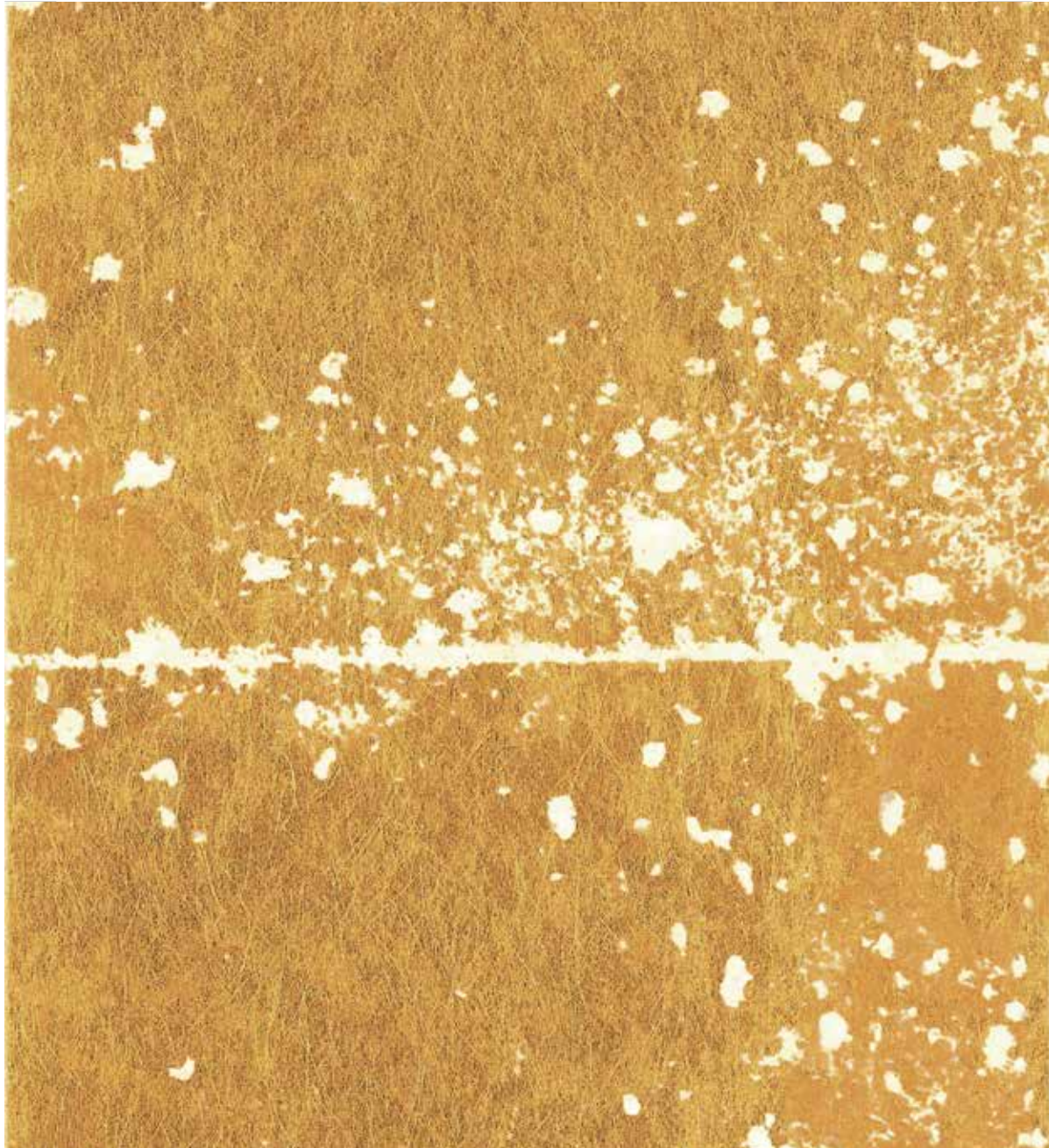
The production manufacturer has a history of 100 years since 1905. And today still has continued to inherit the Japan gold leaf culture.

Our Metal Leaf Wallcoverings offer an unmatched experience in luxury and are created by a time honored process that value both tradition and innovation.



Snow Dance



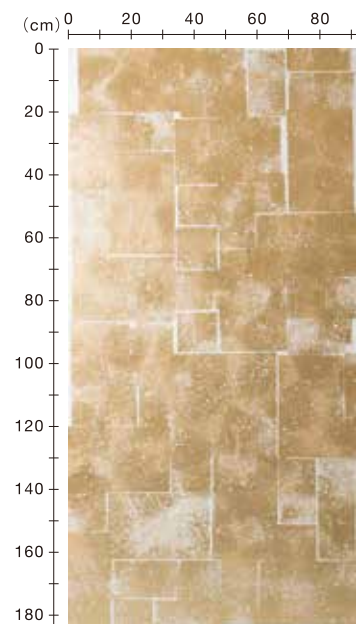


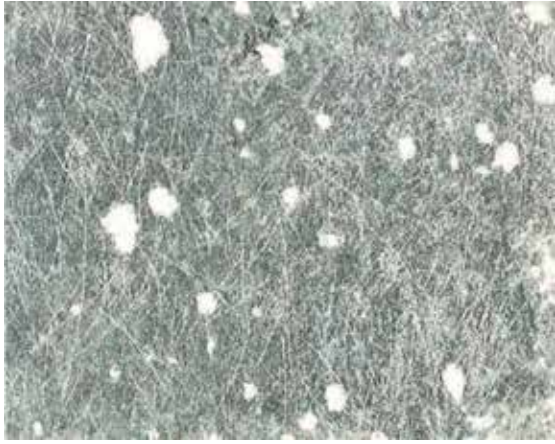
SZM-0631 [HANDMADE]

Material Brass Leaf / Nonwoven Paper

Size 36" × 8yds

The design is based on the image of snow falling on a stone pavement. It is foil stamped to take advantage of the white background. The combination of white and foil colors is very beautiful. Large design makes it easy to fit in large spaces. Available in four types: brass foil, aluminum foil, tin foil, and copper foil

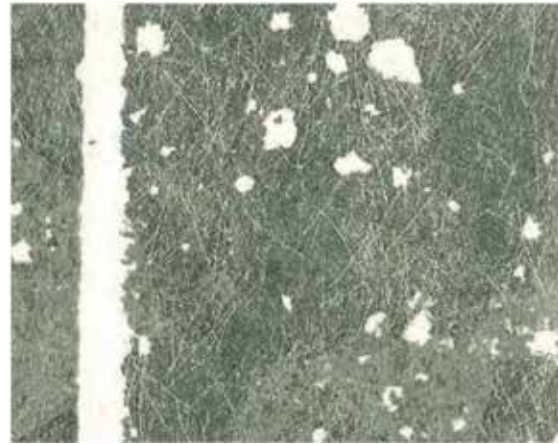




SZM-0632 [HANDMADE]

Material Aluminum Leaf / Nonwoven Paper

Size 36" × 8yds



SZM-0633 [HANDMADE]

Material Pewter Leaf / Nonwoven Paper

Size 36" × 8yds



SZM-0634 [HANDMADE]

Material Copper Leaf / Nonwoven Paper

Size 36" × 8yds



Pure





SZM-0635 [HANDMADE]

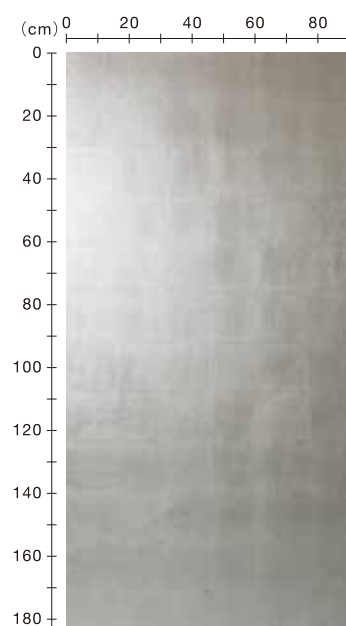
Material Silver Leaf / Matte Paper

Size 36" × 8yds

Repeat 6.18" × 6.18"

This design has a calm design with less luster due to its base is made with matte paper. Each leaf stands out from the others by leaving the overlapping part of the foil. Those foils provide different impressions from each other by adding the color to between their boundaries, although they are the same materials. This timeless design matches in both Japanese and Western spaces.

A total of 7 types of silver foil, 2 types of brass foil, 2 types of aluminum foil, tin foil, and copper foil





SZM-0636 [HANDMADE]

Material Brass Leaf / Matte Paper

Size 36" × 8yds

Repeat 6.18" × 6.18"



SZM-0637 [HANDMADE]

Material Brass Leaf / Matte Paper

Size 36" × 8yds

Repeat 6.18" × 6.18"



SZM-0638 [HANDMADE]

Material Aluminum Leaf / Matte Paper

Size 36" × 8yds

Repeat 6.18" × 6.18"



SZM-0639 [HANDMADE]

Material Aluminum Leaf / Matte Paper

Size 36" × 8yds

Repeat 6.18" × 6.18"



SZM-0640 [HANDMADE]

Material Pewter Leaf / Matte Paper

Size 36" × 8yds

Repeat 6.18" × 6.18"



SZM-0641 [HANDMADE]

Material Copper Leaf / Matte Paper

Size 36" × 8yds

Repeat 6.18" × 6.18"



Rain Fall





SZM-0642 [HANDMADE]

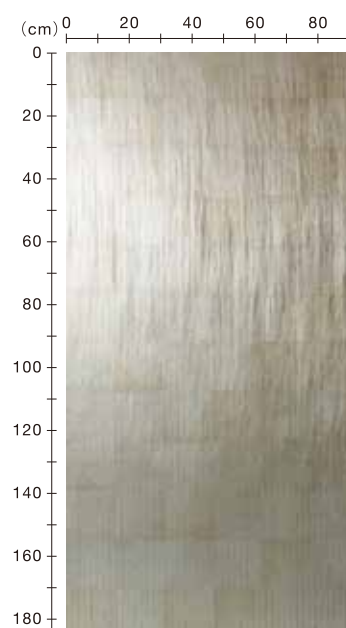
Material Pewter Leaf / Polyester / Paper

Size 36" × 2yds

Repeat 6.18" × 6.18"

The design is based on the image of raindrops falling down. Polyester paste on the base and apply foil stamping Polyester with vertical lines for a more vertical feel. Ideal for wallpaper in spaces with high ceilings such as hotels, as well as for interior decoration such as panels.

7 types: 3 types of tin foil, 2 types of brass foil, 2 types of aluminum foil





SZM-0643 [HANDMADE]

Material Brass Leaf / Polyester / Paper

Size 36" × 2yds

Repeat 6.18" × 6.18"



SZM-0644 [HANDMADE]

Material Brass Leaf / Polyester / Paper

Size 36" × 2yds

Repeat 6.18" × 6.18"



SZM-0645 [HANDMADE]

Material Aluminum Leaf / Polyester / Paper

Size 36" × 2yds

Repeat 6.18" × 6.18"



SZM-0646 [HANDMADE]

Material Aluminum Leaf / Polyester / Paper

Size 36" × 2yds

Repeat 6.18" × 6.18"



SZM-0647 [HANDMADE]

Material Pewter Leaf / Polyester / Paper

Size 36" × 2yds

Repeat 6.18" × 6.18"



SZM-0648 [HANDMADE]

Material Pewter Leaf / Polyester / Paper

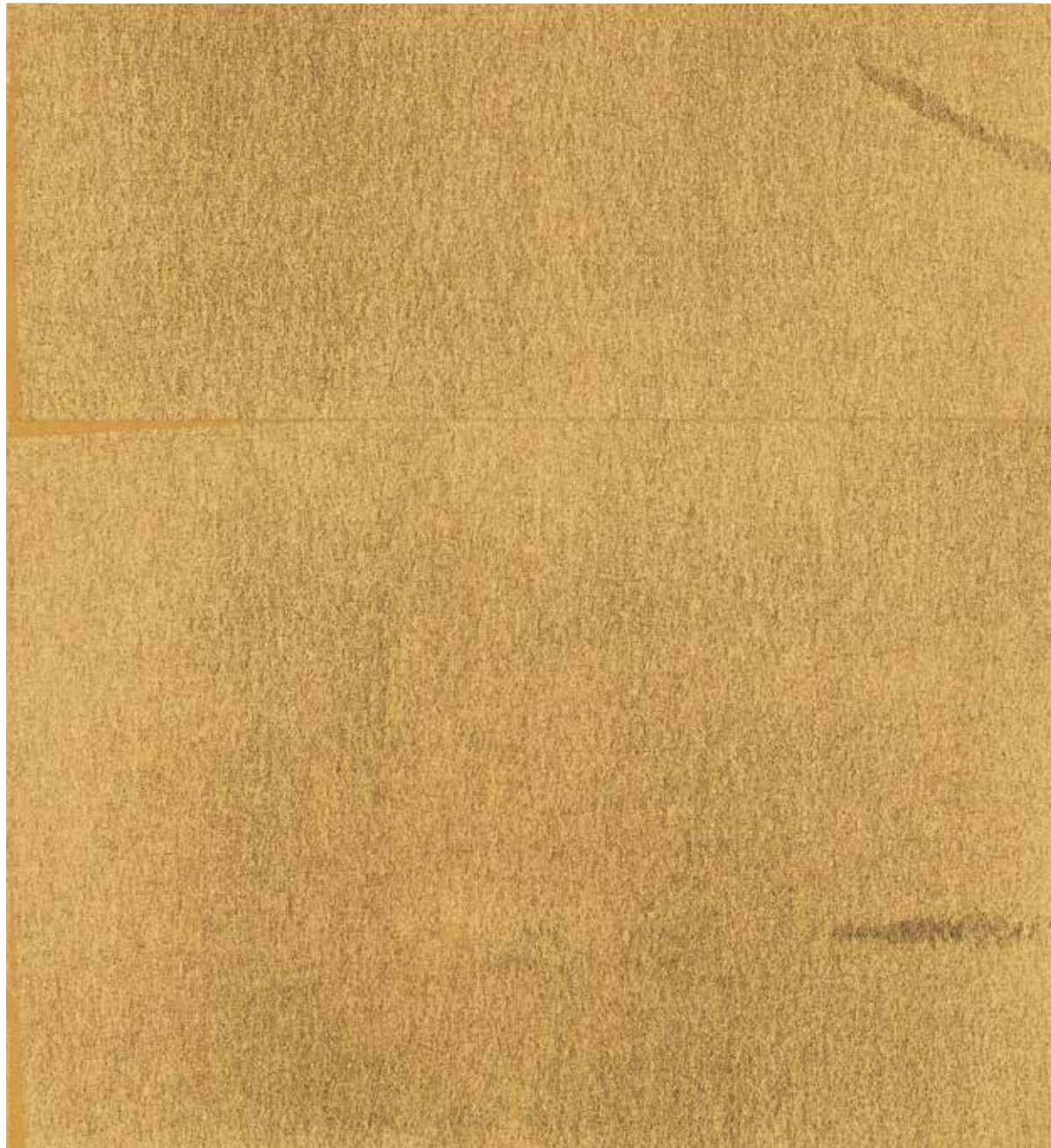
Size 36" × 2yds

Repeat 6.18" × 6.18"



Ensemble





SZM-0649 [HANDMADE]

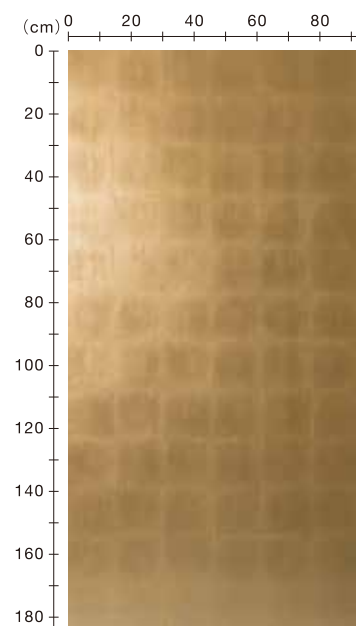
Material Brass Leaf / Matte Paper

Size 36" × 8yds

Repeat 6.18" × 6.18"

The foil is pressed diagonally for a neat design. The highlight of this design is that the color input at the fold edge is thin and straight, and the combination with the color of the foil is impressive. Even if the type of colored foil is the same, it gives a different impression thanks to the thin color. The matte paper is used for the base, so it is ideal for spaces with a calm atmosphere.

Available in 7 types: 2 types of brass foil, 2 types of aluminum foil, and 3 types of tin foil



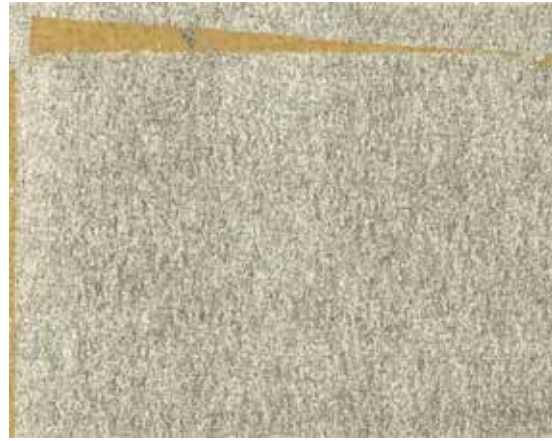


SZM-0650 [HANDMADE]

Material Brass Leaf / Matte Paper

Size 36" × 8yds

Repeat 6.18" × 6.18"

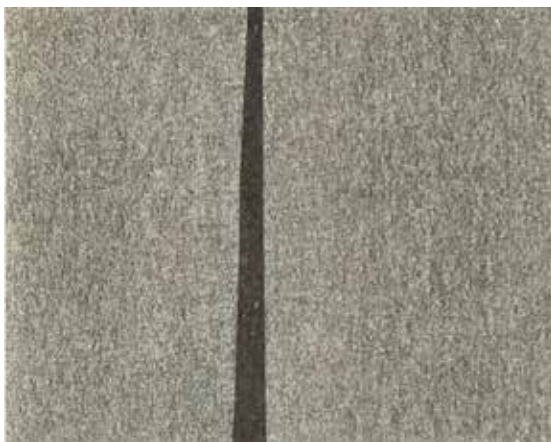


SZM-0651 [HANDMADE]

Material Aluminum Leaf / Matte Paper

Size 36" × 8yds

Repeat 6.18" × 6.18"



SZM-0652 [HANDMADE]

Material Aluminum Leaf / Matte Paper

Size 36" × 8yds

Repeat 6.18" × 6.18"



SZM-0653 [HANDMADE]

Material Pewter Leaf / Matte Paper

Size 36" × 8yds

Repeat 6.18" × 6.18"



SZM-0654 [HANDMADE]

Material Pewter Leaf / Matte Paper

Size 36" × 8yds

Repeat 6.18" × 6.18"



SZM-0655 [HANDMADE]

Material Pewter Leaf / Matte Paper

Size 36" × 8yds

Repeat 6.18" × 6.18"



Aube





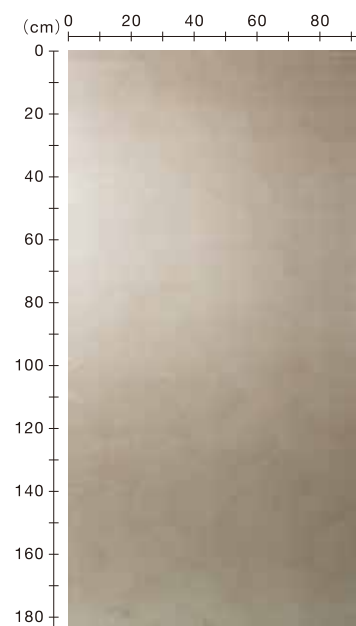
SZM-0656 [HANDMADE]

Material Silk / Pewter Leaf / Paper

Size 36" × 2yds

A beautiful design that combines the three elements of tin foil, silk, and light colors. Foil is stamped at random and has a moving expression. It gives off an elegant shine by pasting silk over it. The color is mixed with the glue used to paste the silk, creating a soft color. This is one of the most popular designs in this catalog and has received many inquiries.

5 colors available by changing the color of glue





SZM-0657 [HANDMADE]

Material Silk / Pewter Leaf / Paper

Size 36" × 2yds



SZM-0658 [HANDMADE]

Material Silk / Pewter Leaf / Paper

Size 36" × 2yds



SZM-0659 [HANDMADE]

Material Silk / Pewter Leaf / Paper

Size 36" × 2yds



SZM-0660 [HANDMADE]

Material Silk / Pewter Leaf / Paper

Size 36" × 2yds



SZM-0661 [HANDMADE]

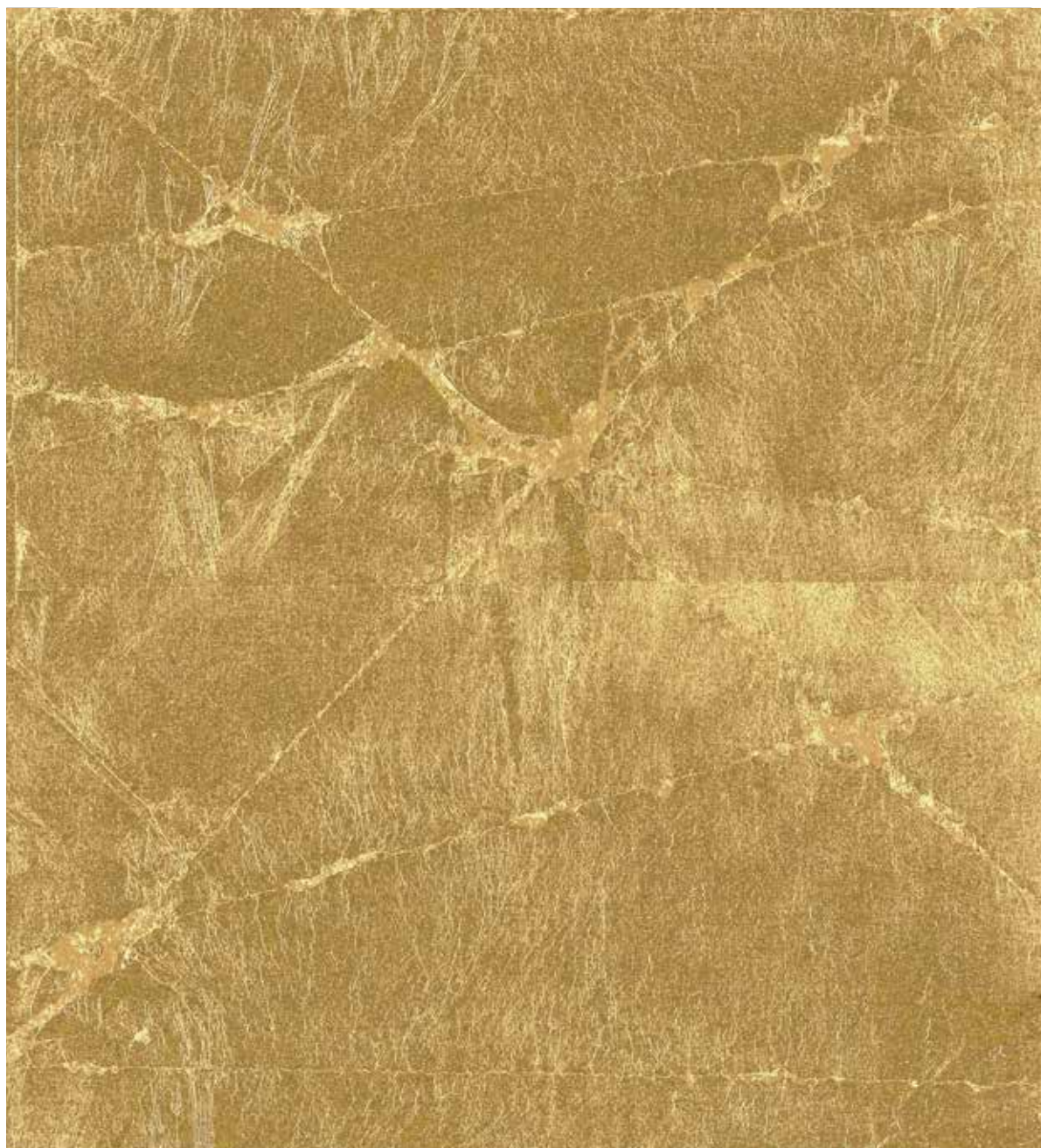
Material Silk / Pewter Leaf / Paper

Size 36" × 2yds



Prism





SZM-0662 [HANDMADE]

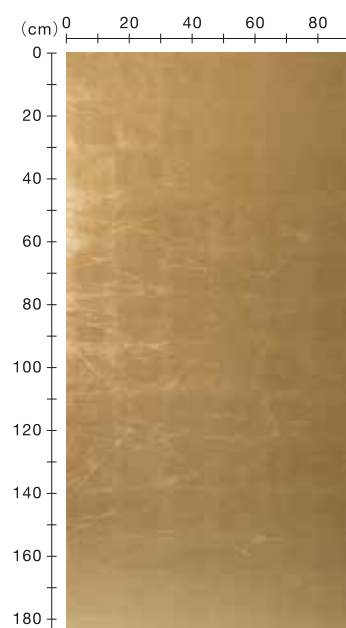
Material Brass Leaf / Paper

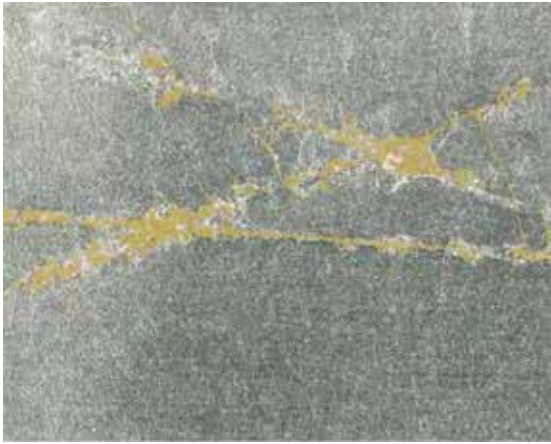
Size 36" × 8yds

Repeat 6.18" × 6.18"

The design is based on the image of light coming in through a gap. Thin lines give a cool impression. The slanted lines and foil squares form a polygon, giving a sense of depth. For development on paper base and rayon base, You can enjoy the difference in luster even with the same foil.

Available in 7 types: 2 types of brass foil, 3 types of aluminum foil, and 2 types of pewter foil





SZM-0663 [HANDMADE]

Material Aluminum Leaf / Paper

Size 36" × 8yds

Repeat 6.18" × 6.18"



SZM-0664 [HANDMADE]

Material Brass Leaf / Matte Paper

Size 36" × 8yds

Repeat 6.18" × 6.18"



SZM-0665 [HANDMADE]

Material Aluminum Leaf / Matte Paper

Size 36" × 8yds

Repeat 6.18" × 6.18"



SZM-0666 [HANDMADE]

Material Aluminum Leaf / Matte Paper

Size 36" × 8yds

Repeat 6.18" × 6.18"



SZM-0667 [HANDMADE]

Material Pewter Leaf / Matte Paper

Size 36" × 8yds

Repeat 6.18" × 6.18"



SZM-0668 [HANDMADE]

Material Pewter Leaf / Matte Paper

Size 36" × 8yds

Repeat 6.18" × 6.18"



Cosmos





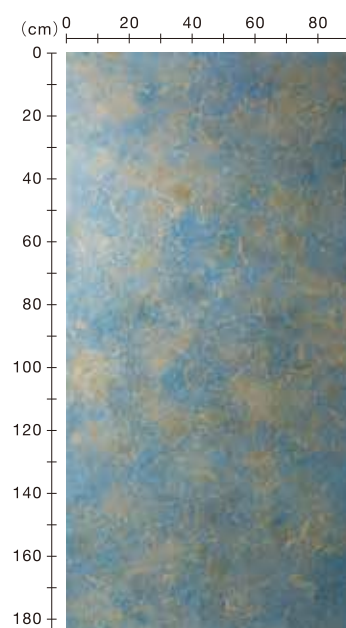
SZM-0669 [HANDMADE]

Material Brass Leaf / Matte Paper

Size 36" × 8yds

As the design name suggests, it is a deep design reminiscent of the wide universe. Stamp the brass foil on the matte paper while wrinkling it randomly. Color is applied by hand from above, and the surface is polished. It is completed after many elaborate processes.

All foils use brass foil and are available in four colors

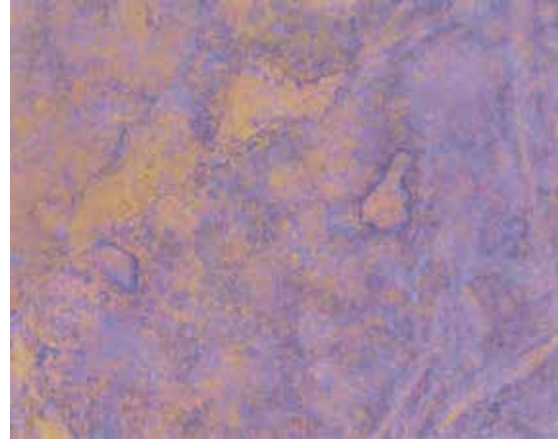




SZM-0670 [HANDMADE]

Material Brass Leaf / Matte Paper

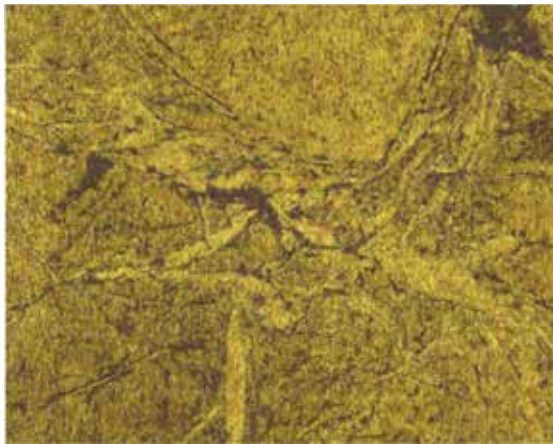
Size 36" × 8yds



SZM-0671 [HANDMADE]

Material Brass Leaf / Matte Paper

Size 36" × 8yds



SZM-0672 [HANDMADE]

Material Brass Leaf / Matte Paper

Size 36" × 8yds



Grace





SZM-0673 [HANDMADE]

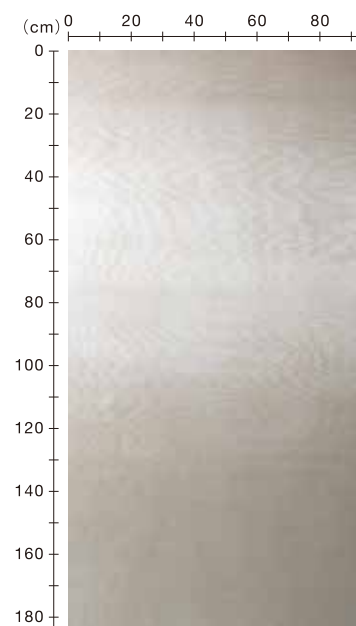
Material Silver Leaf / Silk / Paper

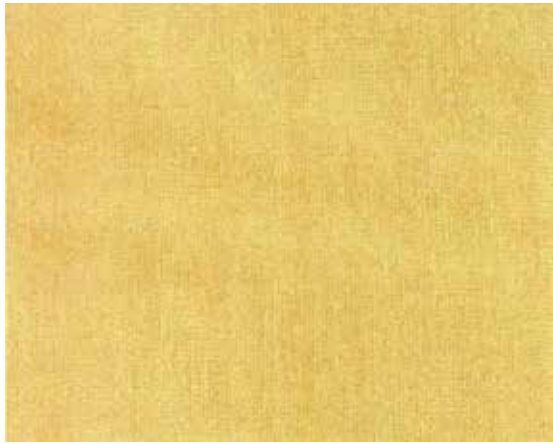
Size 36" × 2yds

Repeat 6.18" × 6.18"

Moiré (wood grain) pattern created by layering two layers of silk. It is a beautiful design in which the moiré looks like ripples. The combination of the silk fabric and the brilliance of the foil creates a beautiful reflection and shine. The moiré patterns are all different since the silk is pasted one by one by hand, and the finish can only be produced by hand.

Six types of silver foil, brass foil, two types of aluminum foil, tin foil, and copper foil





SZM-0674 [HANDMADE]

Material Brass Leaf / Silk / Paper

Size 36" × 2yds

Repeat 6.18" × 6.18"



SZM-0675 [HANDMADE]

Material Aluminum Leaf / Silk / Paper

Size 36" × 2yds

Repeat 6.18" × 6.18"



SZM-0676 [HANDMADE]

Material Aluminum Leaf / Silk / Paper

Size 36" × 2yds

Repeat 6.18" × 6.18"



SZM-0677 [HANDMADE]

Material Pewter Leaf / Silk / Paper

Size 36" × 2yds

Repeat 6.18" × 6.18"



SZM-0678 [HANDMADE]

Material Copper Leaf / Silk / Paper

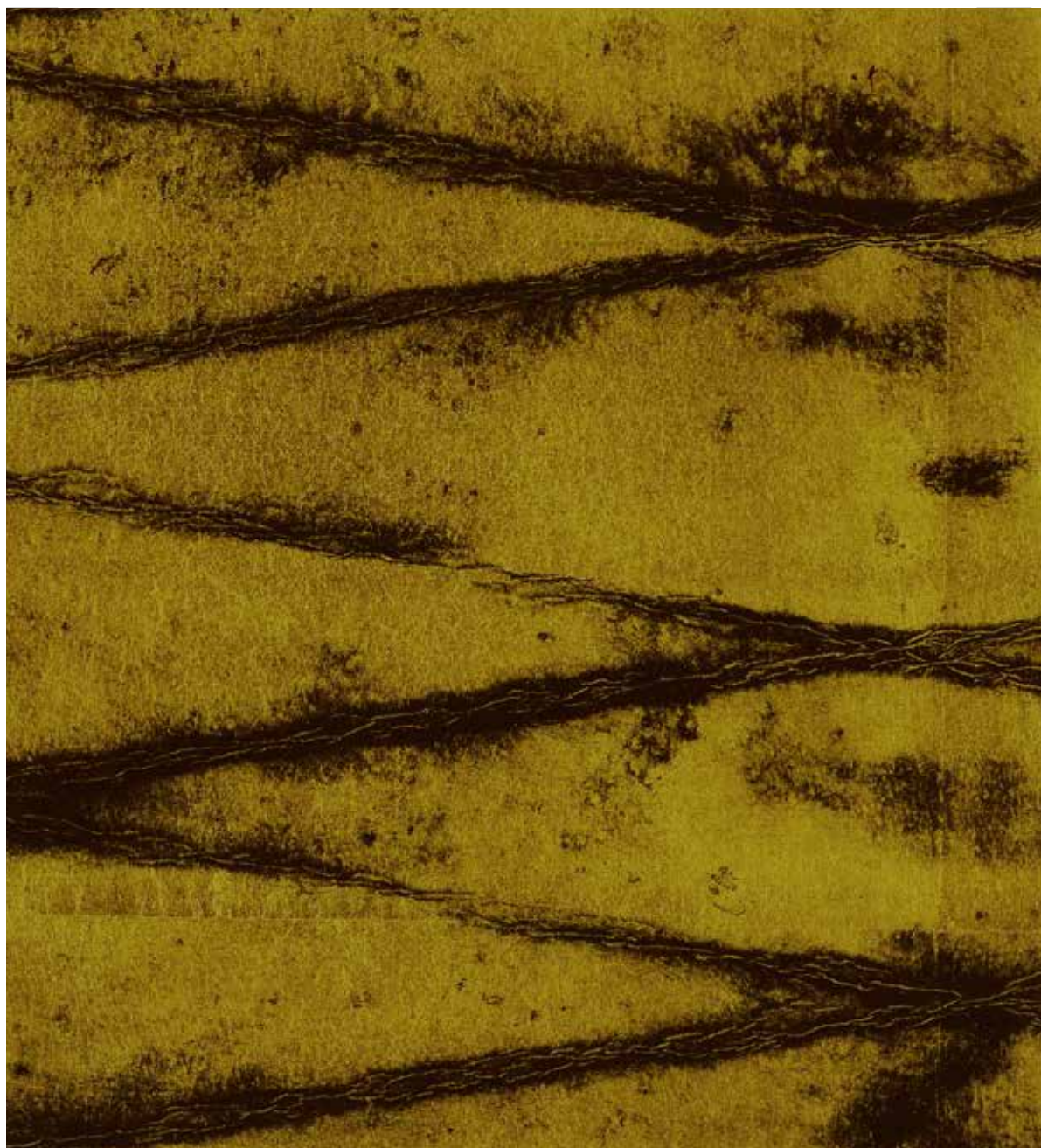
Size 36" × 2yds

Repeat 6.18" × 6.18"



Argyle





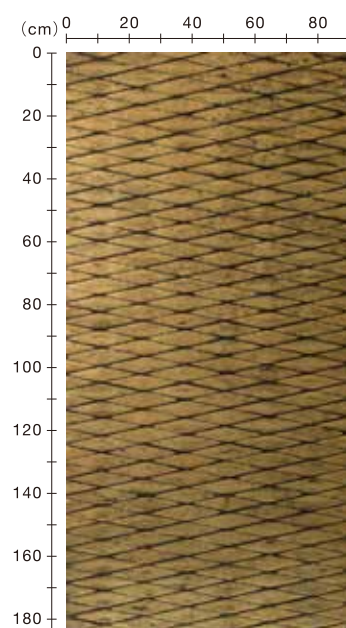
SZM-0679 [HANDMADE]

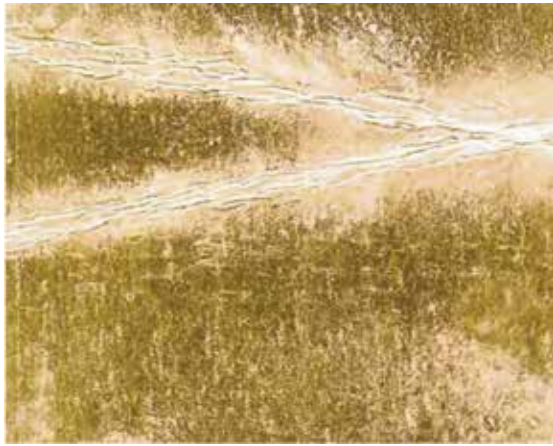
Material Brass Leaf / Paper

Size 36" × 2yds

The foil-stamped paper is folded into an argyle pattern, colored on the crease, and the color is scraped off so that the color of the foil can be seen. The combination of color and foil in the crease creates a design with depth. There are various uses such as accents and panels in the space, and you can enjoy the impact.

There are 6 types: 2 types of Western gold foil, 2 types of aluminum foil, and 2 types of copper foil





SZM-0680 [HANDMADE]

Material Brass Leaf / Paper

Size 36" × 2yds



SZM-0681 [HANDMADE]

Material Aluminum Leaf / Paper

Size 36" × 2yds



SZM-0682 [HANDMADE]

Material Aluminum Leaf / Paper

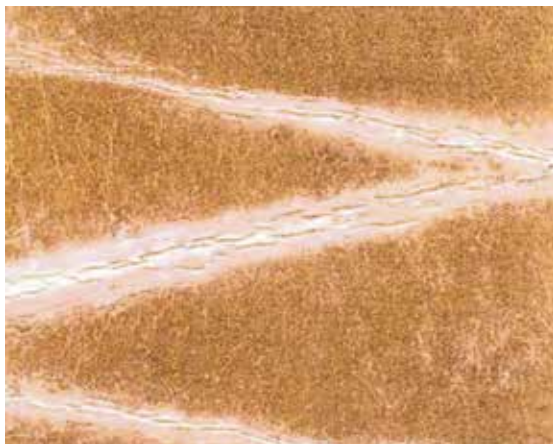
Size 36" × 2yds



SZM-0683 [HANDMADE]

Material Copper Leaf / Paper

Size 36" × 2yds



SZM-0684 [HANDMADE]

Material Copper Leaf / Paper

Size 36" × 2yds

