



Studio Zen Wallcoverings



Metal Leaf Wallcovering, expressing a contemporary Japanese style.

The 1 / 10,000mm foil changes its shape beautifully and roughly, and when the gold and silver light and design are fused, it emits a novel light beautifully. By applying each piece of real metal foil into a base material centered on Japanese paper, every design really has a unique feel and an expression.

The production manufacturer has a history of 100 years since 1905. And today still has continued to inherit the Japan gold leaf culture.

Our Metal Leaf Wallcoverings offer an unmatched experience in luxury and are created by a time honored process that value both tradition and innovation.



Flair





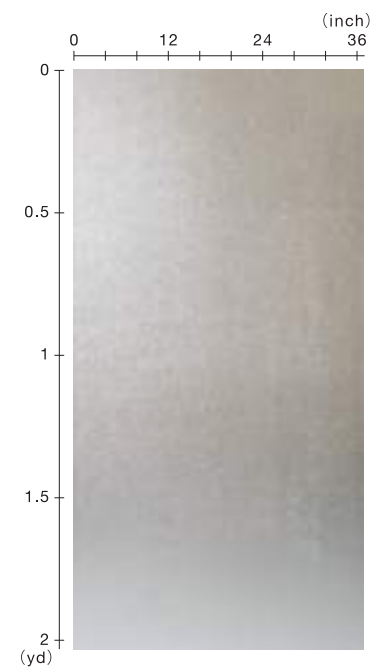
SZM-0574 [HANDMADE]

Material Aluminum Leaf / Paper

Size 36" × 8yds

One of the basic designs representing Studio Zen Metal Leaf.
A long-standing product that has been selling for over half a century. The small pieces of aluminum foil overlap to create an elegant shine that complements the interior. Its design expresses a space with depth by applying flake processing on the entire surface.

Total of 4 colorways with different top coating colors





SZM-0575 [HANDMADE]

Material Aluminum Leaf / Paper

Size 36" × 8yds



SZM-0576 [HANDMADE]

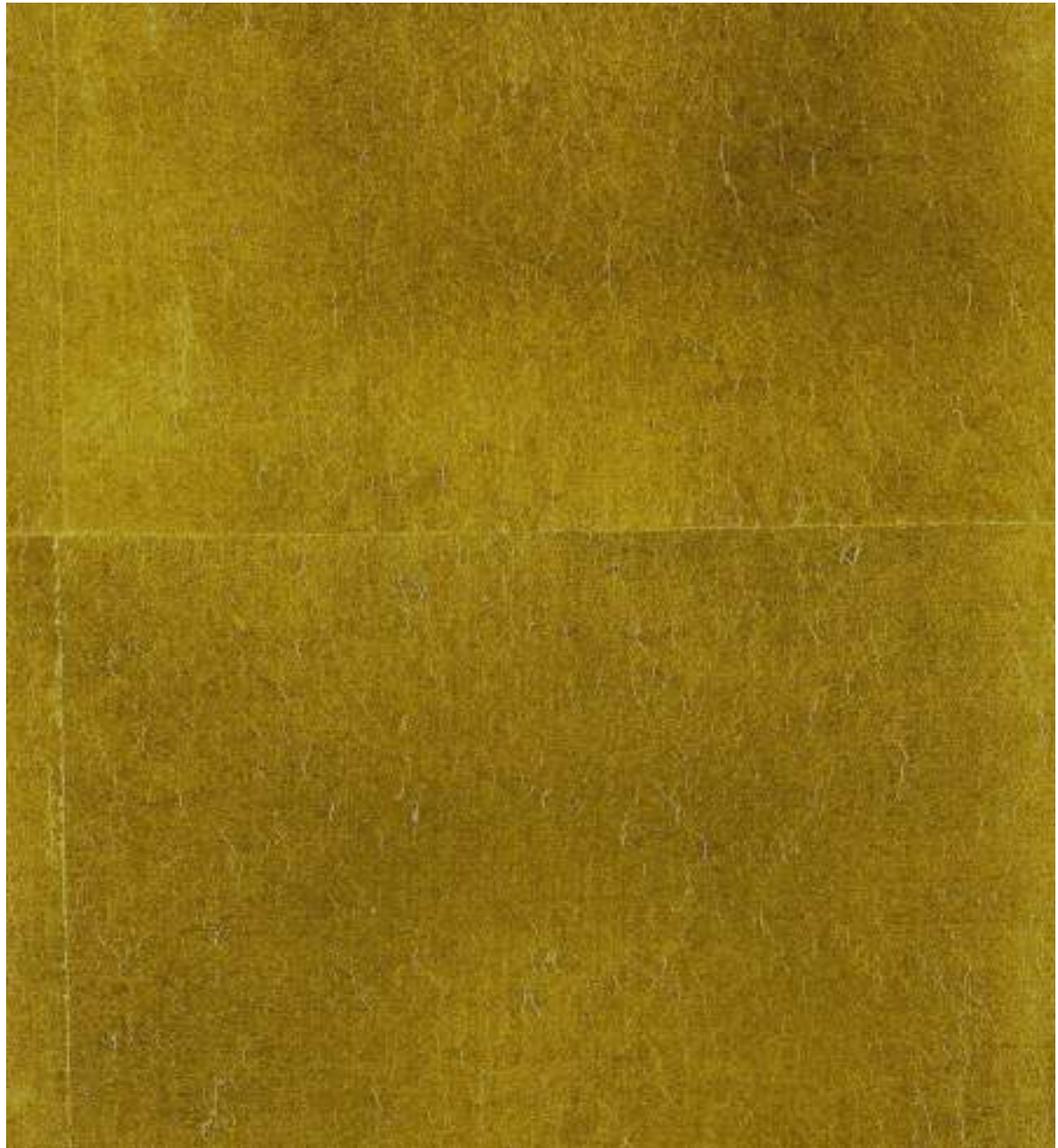
Material Aluminum Leaf / Paper

Size 36" × 8yds



Zen





SZM-0577 [HANDMADE]

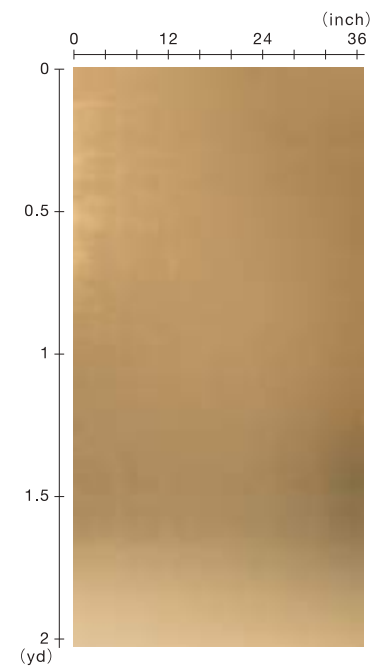
Material Brass Leaf / Paper

Size 36" × 8yds

Repeat 6.18" × 6.18"

A simple design with neatly arranged leaf. It delivers the joy of differences in expression of each leaf, which is different from printing. There are various uses such as wallpaper, folding screens, panels, calligraphy, and paintings.

Available in four types: brass foil, tin foil, aluminum foil, and copper foil





SZM-0578 [HANDMADE]

Material Pewter Leaf / Paper

Size 36" × 8yds

Repeat 6.18" × 6.18"



SZM-0579 [HANDMADE]

Material Aluminum Leaf / Paper

Size 36" × 8yds

Repeat 6.18" × 6.18"



SZM-0580 [HANDMADE]

Material Copper Leaf / Paper

Size 36" × 8yds

Repeat 6.18" × 6.18"



Kazari





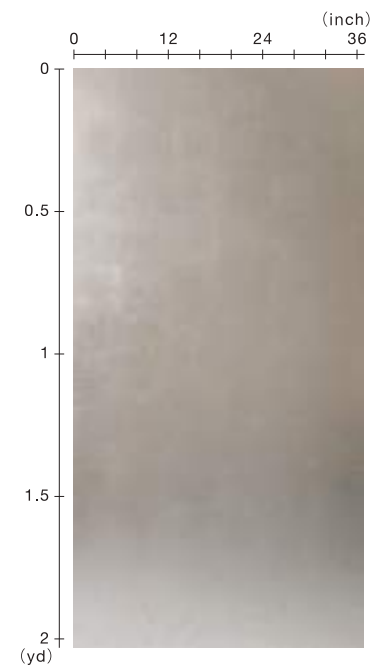
SZM-0581 [HANDMADE]

Material Aluminum Leaf / Brass Leaf / Paper

Size 36" × 8yds

Repeat 6.18" × 6.18"

By using two types of foil, the design has a tasteful contrast. The foil is ripped and pressed to create a gap, and a different foil is inserted in the gap. Due to the unique way the foil breaks and wrinkles are all different, no two products are the same





SZM-0582 [HANDMADE]

Material Brass Leaf / Aluminum Leaf / Paper

Size 36" × 8yds

Repeat 6.18" × 6.18"



SZM-0583 [HANDMADE]

Material Aluminum Leaf / Copper Leaf / Paper

Size 36" × 8yds

Repeat 6.18" × 6.18"



SZM-0584 [HANDMADE]

Material Pewter Leaf / chemical Brass Leaf / Paper

Size 36" × 8yds

Repeat 6.18" × 6.18"



Sakura





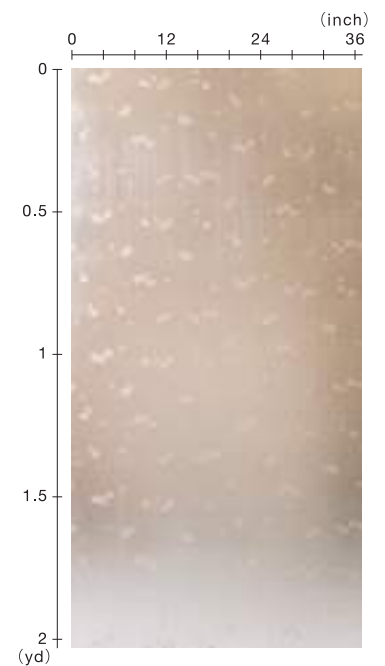
SZM-0585 [HANDMADE]

Material Aluminum Leaf / Paper

Size 36" × 8yds

Repeat 6.18" × 6.18"

Famous Japanese cherry blossom design by utilizing foil stamping on a base with an embossed cherry blossom pattern. The cherry blossoms stand out more since the foil is extremely thin. Combining techniques of scratching with a brush vertically and horizontally with coloring creates a tasteful design.





SZM-0586 [HANDMADE]

Material Pewter Leaf / Paper

Size 36" × 8yds

Repeat 6.18" × 6.18"



SZM-0587 [HANDMADE]

Material Brass Leaf / Paper

Size 36" × 8yds

Repeat 6.18" × 6.18"



SZM-0588 [HANDMADE]

Material Aluminum Leaf / Paper

Size 36" × 8yds

Repeat 6.18" × 6.18"



SZM-0589

Awe-Inspring





SZM-0589 [HANDMADE]

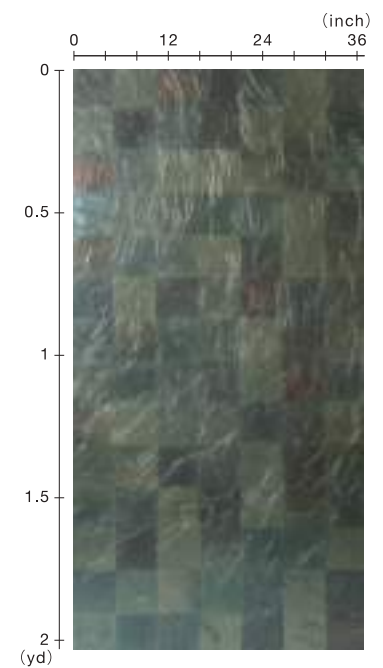
Material Chemical Silver Blue Leaf / Paper / Silk

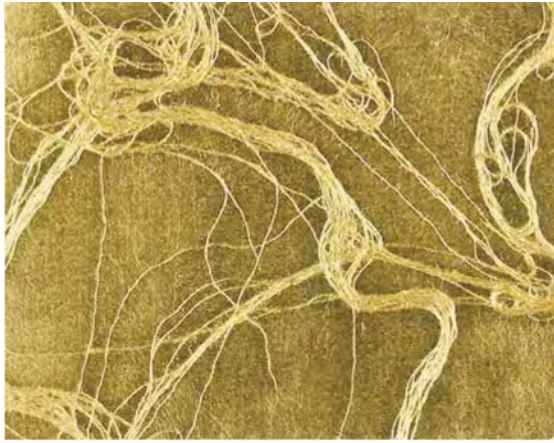
Size 36" × 2yds

Repeat 5.31" × 5.31"

Randomly laid out silk threads create an image of a bird's nest. The contrast between "stillness" and "movement" of the well-ordered foil and dynamic silk thread creates a beautiful and luxurious atmosphere. Everything from attaching the silk threads to foil stamping is done by hand, so no two are the same.

Four types of leaf: blue shell leaf, brass leaf, real silver leaf, and tin leaf



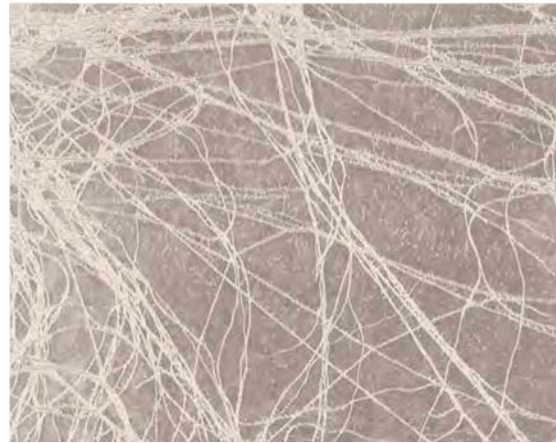


SZM-0590 [HANDMADE]

Material Brass Leaf / Paper / Silk

Size 36" × 2yds

Repeat 6.18" × 6.18"



SZM-0591 [HANDMADE]

Material Silver Leaf / Paper / Silk

Size 36" × 2yds

Repeat 6.18" × 6.18"



SZM-0592 [HANDMADE]

Material Pewter Leaf / Paper / Silk

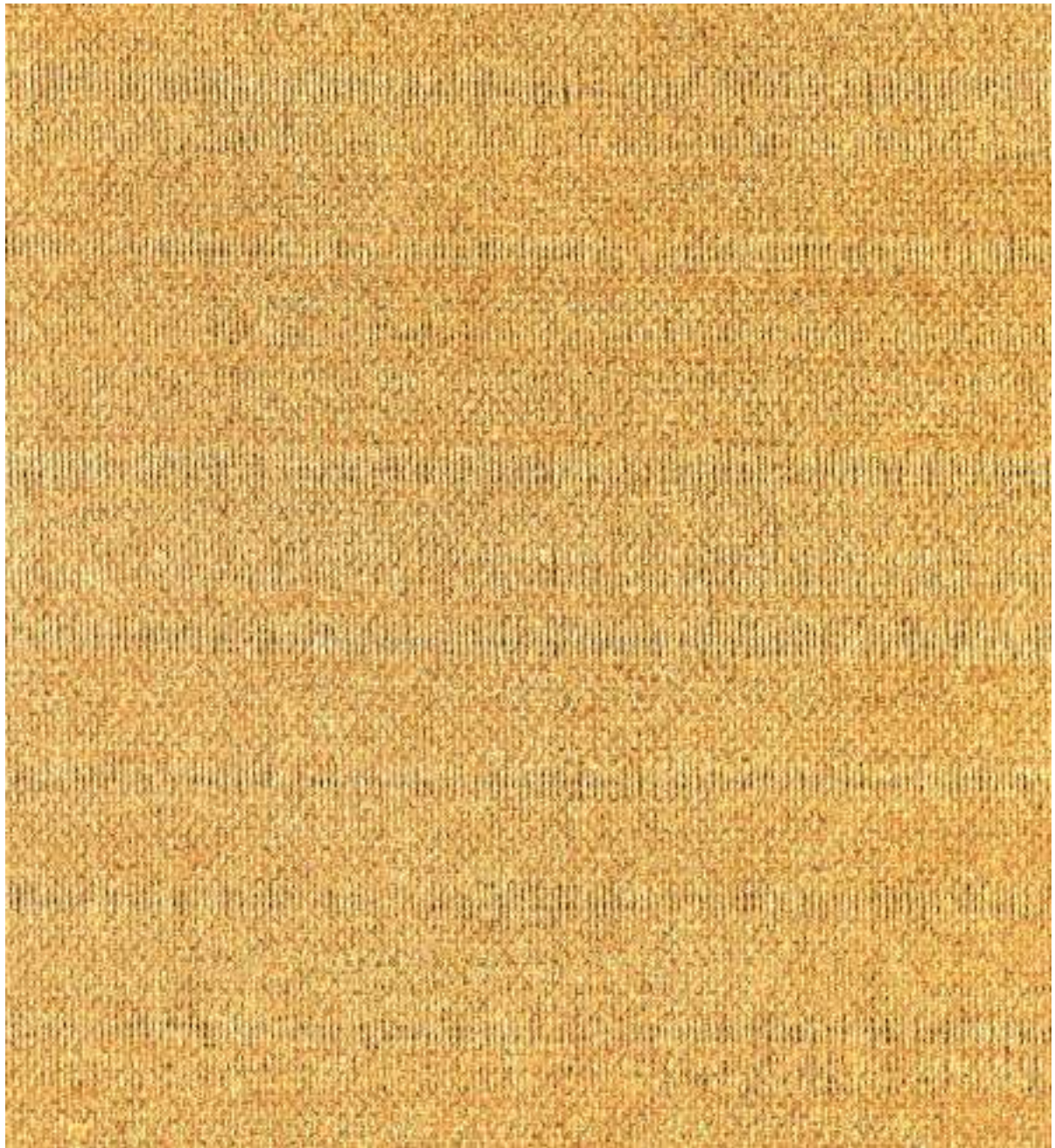
Size 36" × 2yds

Repeat 6.18" × 6.18"



Canvas





SZM-0593 [HANDMADE]

Material Brass Leaf / Paper / Rayon

Size 36" × 2yds

Repeat 6.18" × 6.18"

Solid design with a woven texture. Fabric is pasted on the base Japanese washi paper, and foil stamping is applied from above. The unevenness of the fabric gives the foil an elegant and calm glow. A basic timeless design that matches various spaces depending on the type of foil.

Available in four types: brass foil, tin foil, real silver foil, and copper foil





SZM-0594 [HANDMADE]

Material Pewter Leaf / Paper / Rayon

Size 36" × 2yds

Repeat 6.18" × 6.18"



SZM-0595 [HANDMADE]

Material Silver Leaf / Paper / Rayon

Size 36" × 2yds

Repeat 6.18" × 6.18"



SZM-0596 [HANDMADE]

Material Copper Leaf / Paper / Rayon

Size 36" × 2yds

Repeat 6.18" × 6.18"



Mirth





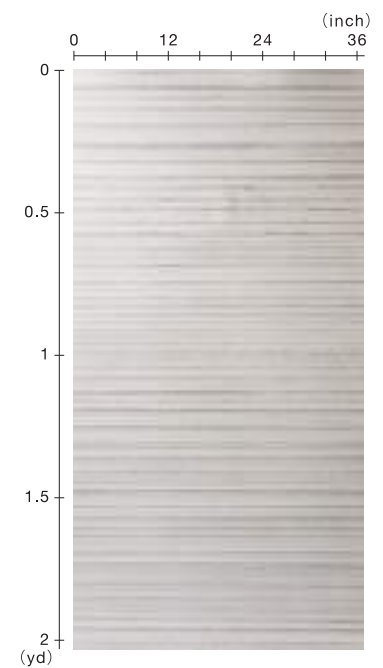
SZM-0597 [HANDMADE]

Material Aluminum Leaf / Paper

Size 36" × 2yds

A discerning design that combines the three elements of foil, kneading, and color. There are numerous processes that are involved in creating this design such as : folding foil stamped paper by hand, adding wrinkles, coloring, and scraping off the color. You can enjoy the brilliance of foil and foil scraps from under the colors. Used for ceilings in commercial facilities, pasted on furniture, etc.

Two types of aluminum foil scraps and brass foil





SZM-0598 [HANDMADE]

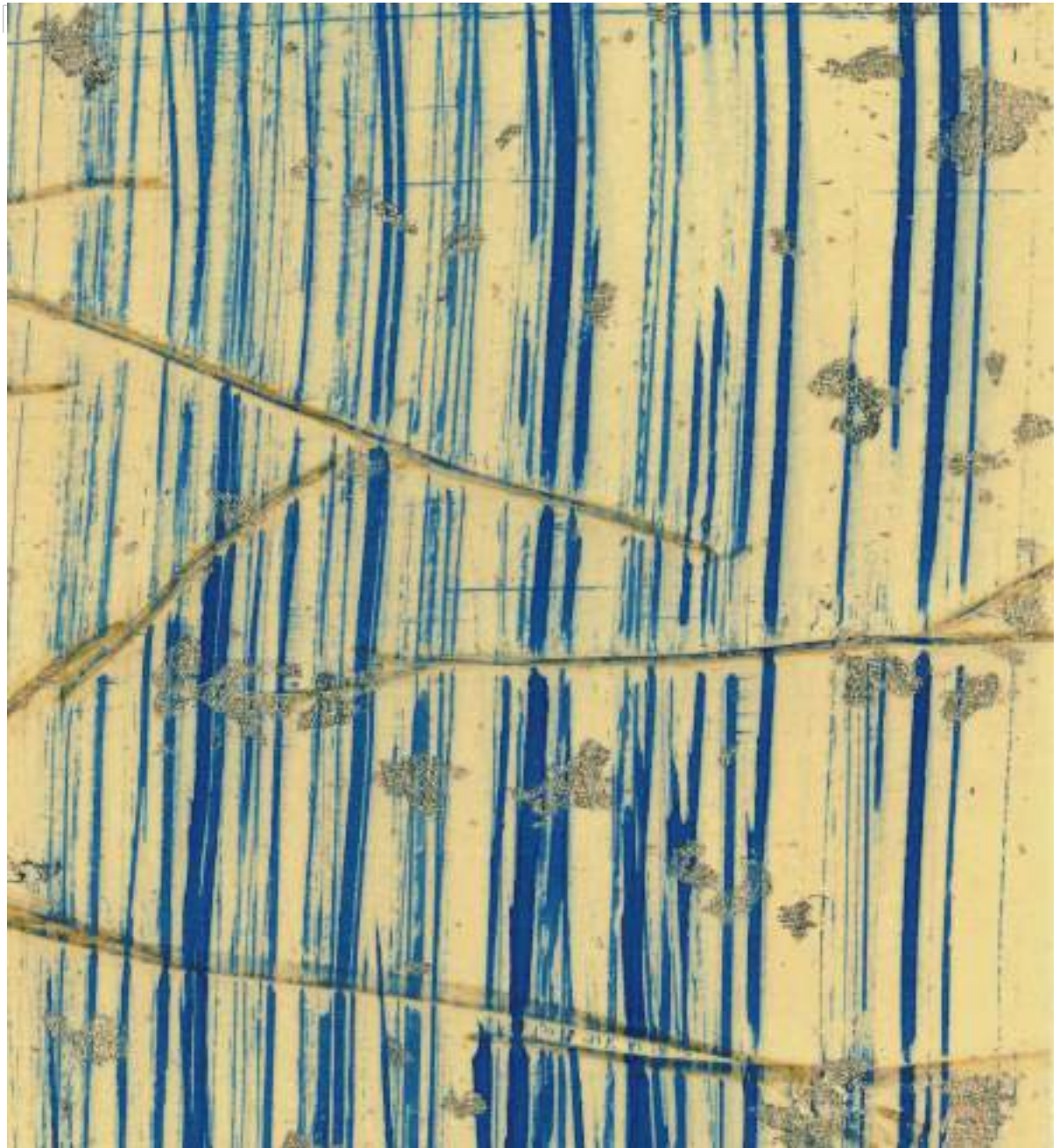
Material Brass Leaf / Paper

Size 36" × 2yds



Parallel



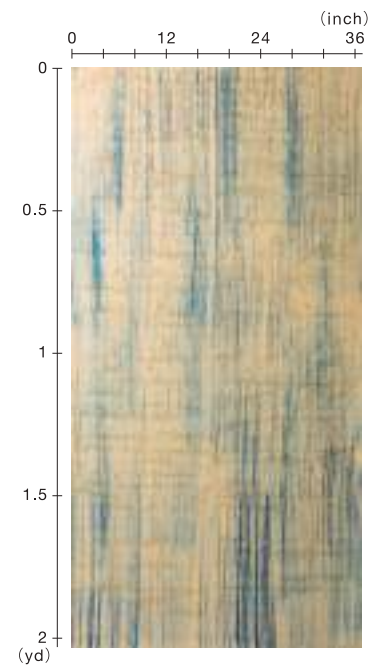


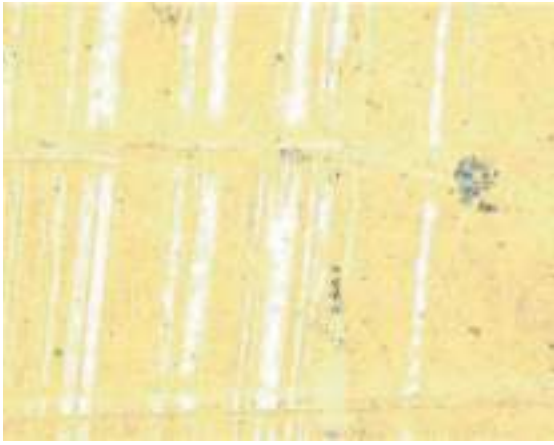
SZM-0599 [HANDMADE]

Material Brass Leaf / Paper / Rayon

Size 36" × 8yds

Colored lines represent falling rain, and foil scraps represent the sparkle of the drops when the light shines on them. Rayon is pasted on the base Japanese washi paper to create a textured design. Line drawing, foil stamping, all done by hand, each one is carefully made Two types of brass foil scraps and aluminum foil scraps.





SZM-0600 [HANDMADE]

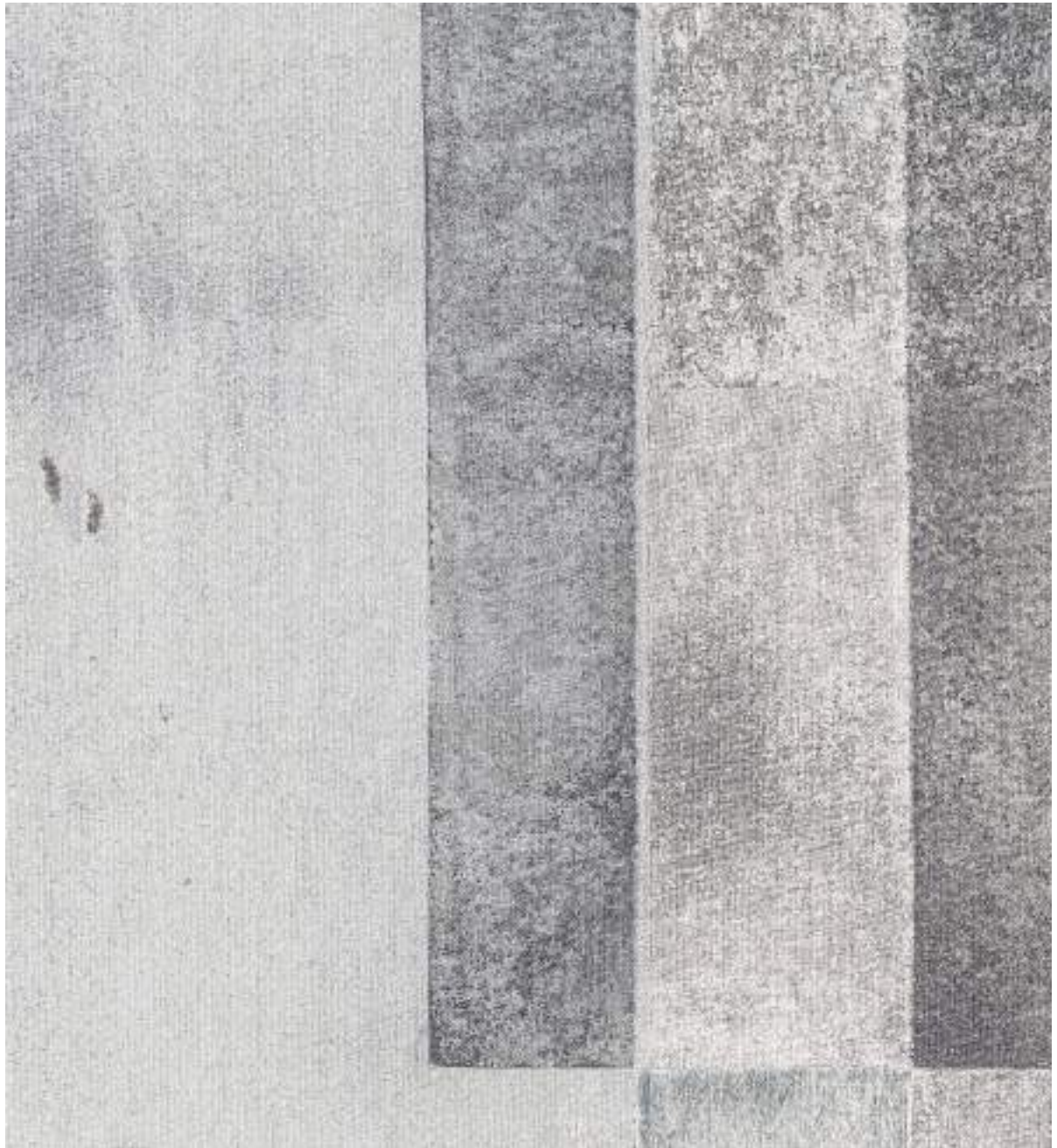
Material Aluminum Leaf / Paper / Rayon

Size 36" × 8yds



Landscape





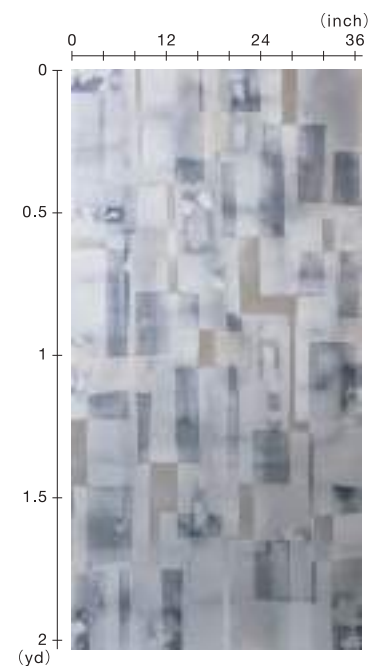
SZM-0601 [HANDMADE]

Material Aluminum Leaf / Silver Leaf / Paper / Polyester

Size 36" × 8yds

Unique design with a combination of foil and moiré. We have created a new design by reusing small pieces of organza. Each organza is pasted by hand and foil stamped randomly from above brings out the organza color and moiré from under the foil. The design color comes from color of the organza material itself. The moiré that can be made by layering organza has a value like a one-of-a-kind piece with a different pattern.

3 types of aluminum foil and silver foil (blue), brass foil, aluminum foil and silver foil.





SZM-0602 [HANDMADE]

Material Brass Leaf / Paper / Polyester

Size 36" × 8yds



SZM-0603 [HANDMADE]

Material Aluminum Leaf / Silver Leaf / Paper / Polyester

Size 36" × 8yds



Bark





SZM-0604 [HANDMADE]

Material Brass Leaf / Paper / Polyester

Size 36" × 2yds

Repeat 6.18" × 6.18"

The design was inspired by nature. As the name suggests, this "bark" was designed with a rugged feel like the bark of a tree. It is expressed by twisting and tearing the polyester fabric by hand. You can enjoy the difference in the brilliance of the foil between areas with and without fabric. Produces an impressive space by creating an aged atmosphere.

Four types of scrap brass foil, tin foil, aluminum foil, and copper foil





SZM-0605 [HANDMADE]

Material Pewter Leaf / Paper / Polyester

Size 36" × 2yds

Repeat 6.18" × 6.18"



SZM-0606 [HANDMADE]

Material Aluminum Leaf / Paper / Polyester

Size 36" × 2yds

Repeat 6.18" × 6.18"

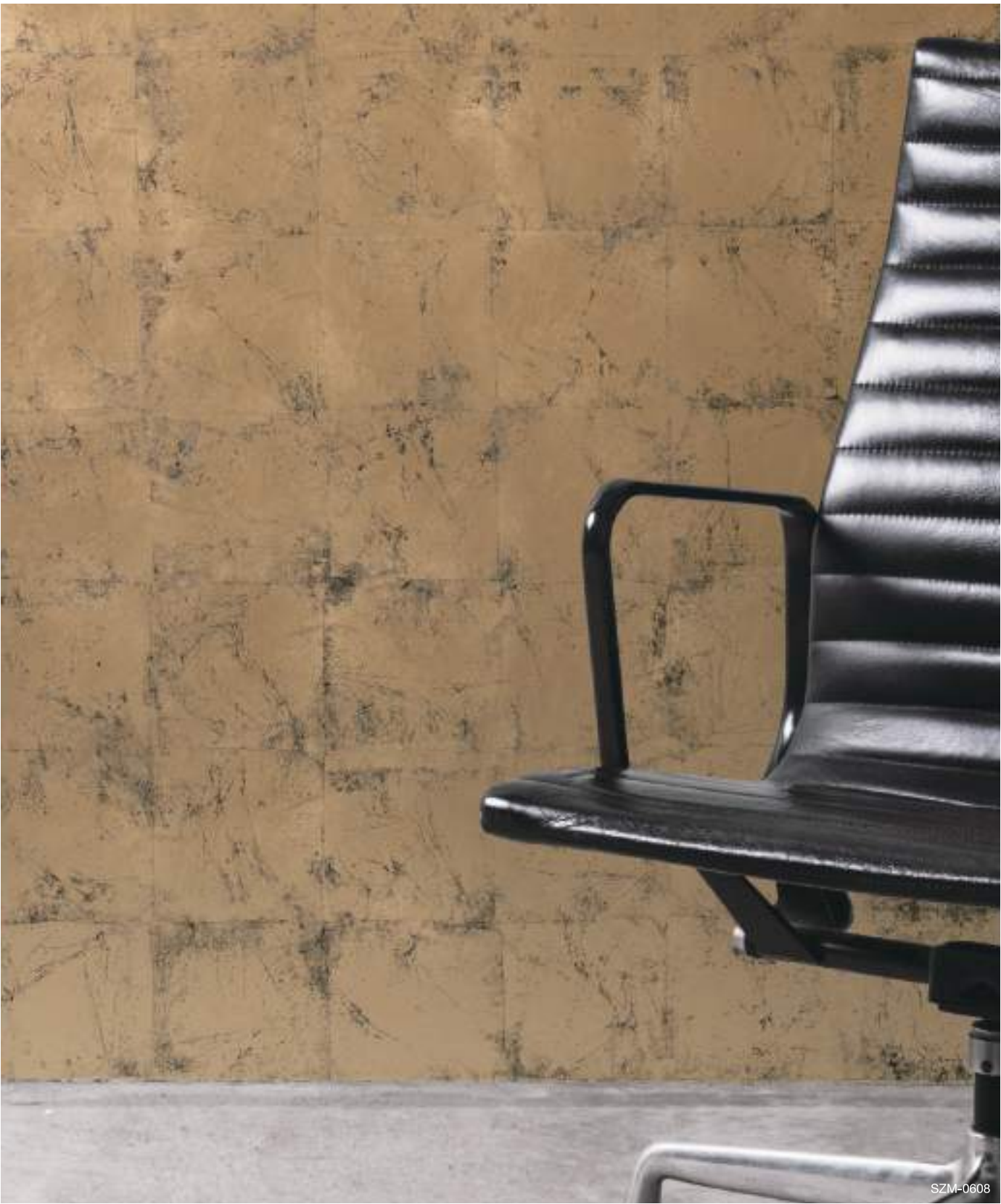


SZM-0607 [HANDMADE]

Material Copper Leaf / Paper / Polyester

Size 36" × 2yds

Repeat 6.18" × 6.18"



Eternal





SZM-0608 [HANDMADE]

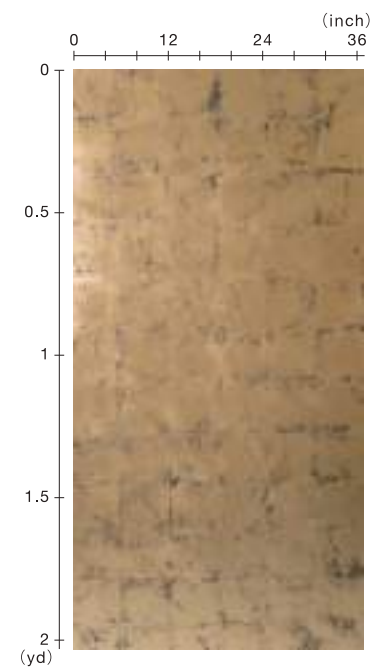
Material Brass Leaf / Paper

Size 36" × 8yds

Repeat 6.18" × 6.18"

The design is based on the image of foil paper that has been used for many years. The wrinkles of the foil and the peeling off of the border of the foil give it an aged atmosphere. Although the black color is used as an accent, the foil is a simple flat type, so it matches various spaces.

Available in two types: brass foil and aluminum foil





SZM-0609 [HANDMADE]

Material Aluminum Leaf / Paper

Size 36" × 8yds

Repeat 6.18" × 6.18"



Impression





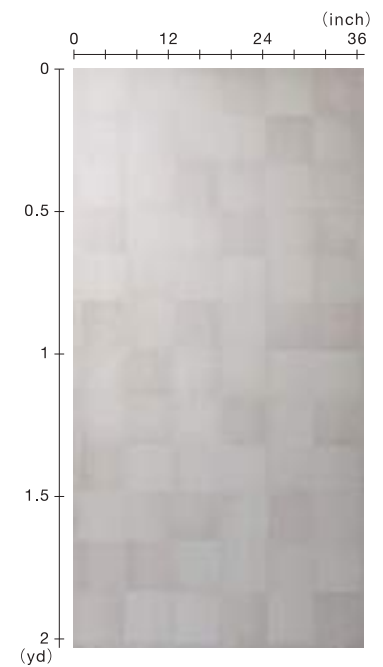
SZM-0610 [HANDMADE]

Material Pewter Leaf / Paper / Silk

Size 36" × 2yds

Repeat 6.18" × 6.18"

The three elements of soft color, tin foil, and silk are combined to create a stunningly beautiful design. Thin striped lines of tin foil scraps are added to give a clean impression. The color is mixed with the glue used to paste the silk, giving it a distinctive soft color. This is one of the most popular designs in this catalog. 5 colors available by changing the color of glue.





SZM-0611 [HANDMADE]

Material Pewter Leaf / Paper / Silk

Size 36" × 2yds

Repeat 6.18" × 6.18"



SZM-0612 [HANDMADE]

Material Pewter Leaf / Paper / Silk

Size 36" × 2yds

Repeat 6.18" × 6.18"



SZM-0613 [HANDMADE]

Material Pewter Leaf / Paper / Silk

Size 36" × 2yds

Repeat 6.18" × 6.18"



SZM-0614 [HANDMADE]

Material Pewter Leaf / Paper / Silk

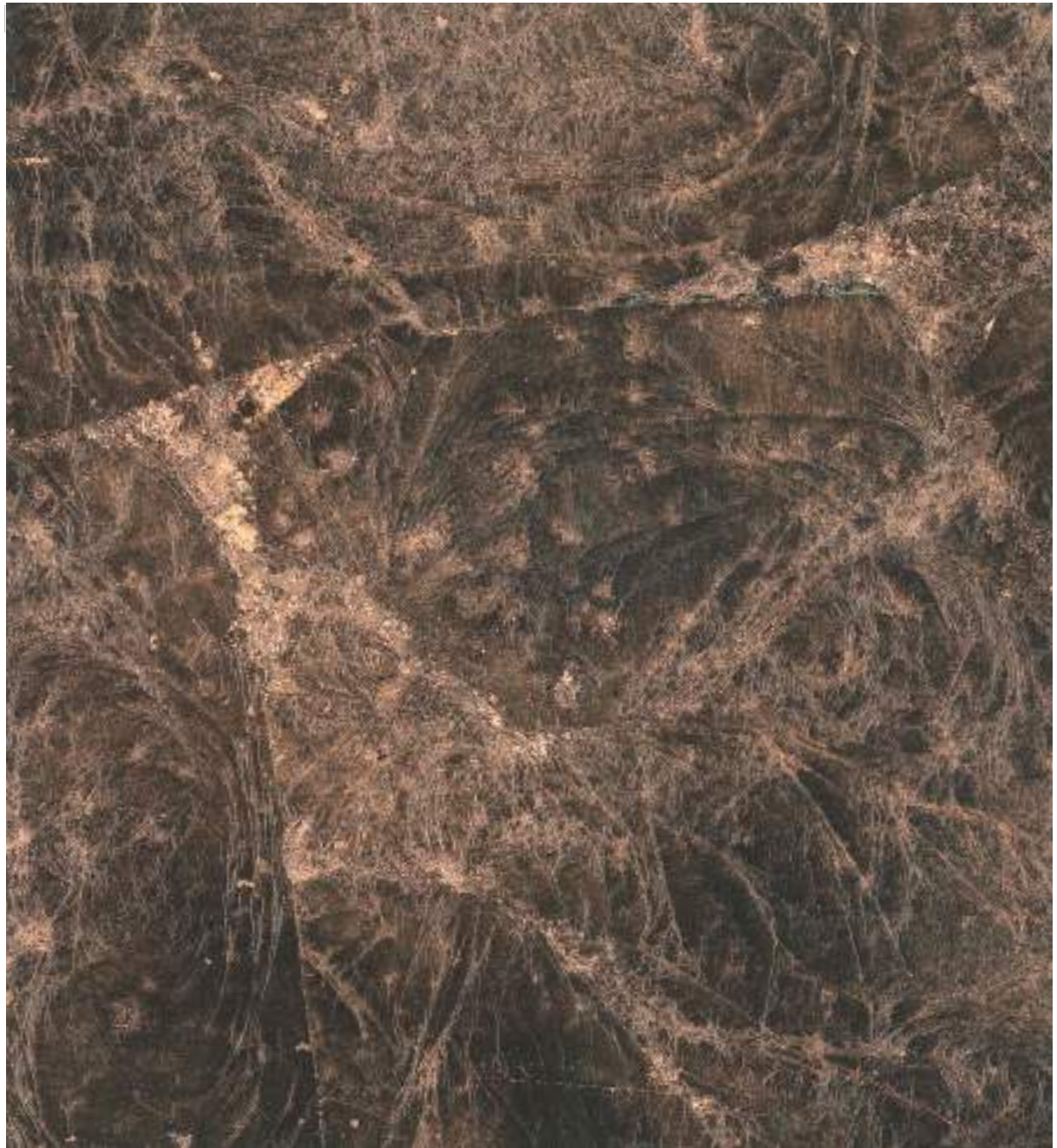
Size 36" × 2yds

Repeat 6.18" × 6.18"



Mellow





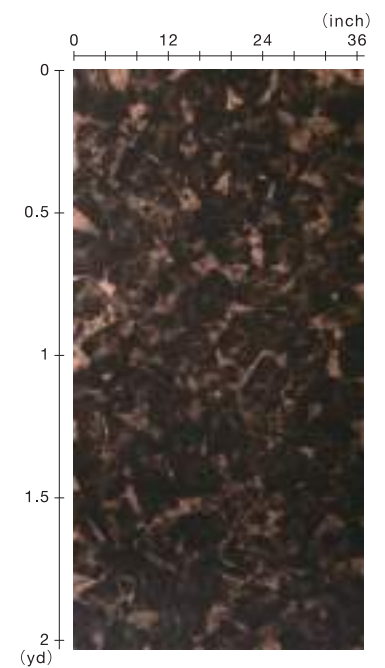
SZM-0615 [HANDMADE]

Material Copper Leaf / Paper

Size 36" × 8yds

Designed to look like marble. It is colored with a specially mixed color to match each foil color after randomly stamping with wrinkles. The brilliance of the foil peeking through the gaps of color brings a sense of solidity to the space. Please enjoy the contrast between foil and color.

Available in 7 types: copper foil, brass foil, aluminum foil, and tin foil

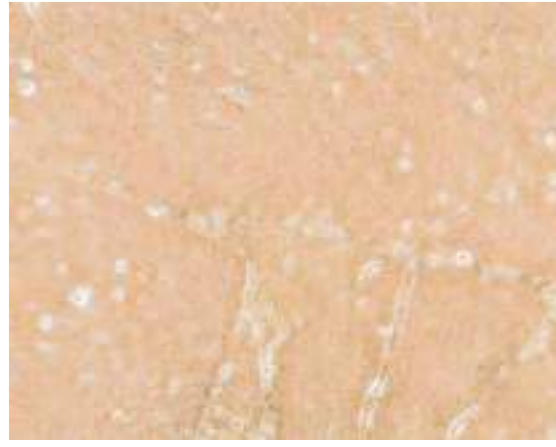




SZM-0616 [HANDMADE]

Material Brass Leaf / Paper

Size 36" × 8yds



SZM-0617 [HANDMADE]

Material Brass Leaf / Paper

Size 36" × 8yds



SZM-0618 [HANDMADE]

Material Aluminum Leaf / Paper

Size 36" × 8yds



SZM-0619 [HANDMADE]

Material Aluminum Leaf / Paper

Size 36" × 8yds



SZM-0620 [HANDMADE]

Material Pewter Leaf / Paper

Size 36" × 8yds



SZM-0621 [HANDMADE]

Material Pewter Leaf / Paper

Size 36" × 8yds



Classic





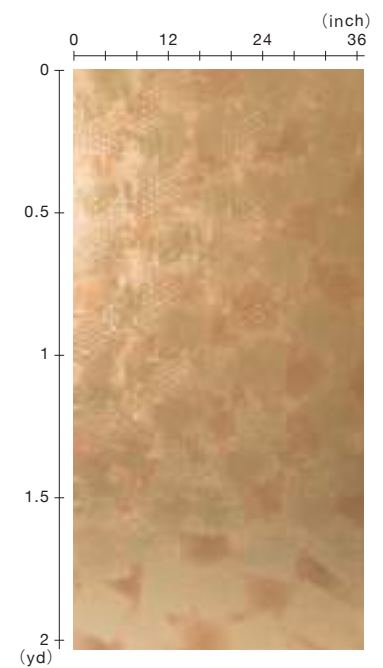
SZM-0622 [HANDMADE]

Material Brass Leaf / Vinyl

Size 35" × 8yds

The design features a distinctive pattern that makes you think of Japan. The base vinyl paper is embossed with cherry blossoms and classic patterns. It is popular as a wallpaper that creates a Japanese traditional atmosphere, and widely used as a background of folding screen behind dolls.

2 types of brass foil, 4 types of tin foil, and ark shell foil





SZM-0623 [HANDMADE]

Material Brass Leaf / Vinyl

Size 35" × 8yds

Repeat 6.18" × 6.18"



SZM-0624 [HANDMADE]

Material Pewter Leaf / Vinyl

Size 35" × 8yds

Repeat 6.18" × 6.18"



SZM-0625 [HANDMADE]

Material Chemical Silver Red Leaf / Vinyl

Size 35" × 8yds



Moment





SZM-0626 [HANDMADE]

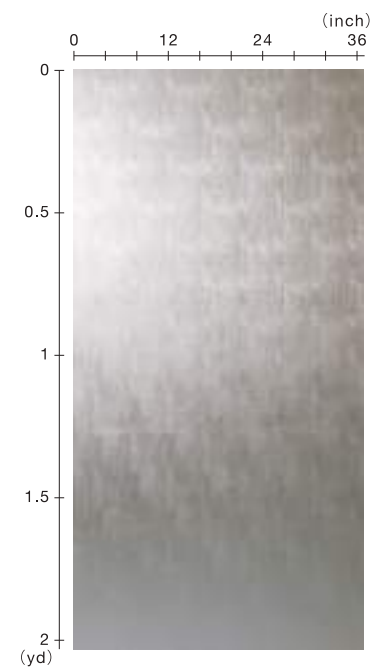
Material Aluminum Leaf / Vinyl

Size 36" × 8yds

Repeat 6.18" × 6.18"

The combination of thin stripes and foil is an elegant design. Foil stamping is applied to the textured vinyl paper base. The simple design allows it to harmonize with the interior. It is a product that can be widely used as wallpaper for stores such as jewelry stores and as wallpaper for houses.

Available in 3 types: aluminum foil, brass foil, and tin foil





SZM-0627 [HANDMADE]

Material Brass Leaf / Vinyl

Size 36" × 8yds

Repeat 6.18" × 6.18"



SZM-0628 [HANDMADE]

Material Pewter Leaf / Vinyl

Size 36" × 8yds

Repeat 5.31" × 12.2"

