





Metal Leaf Wallcovering, expressing a contemporary Japanese style.

The 1 / 10,000mm foil changes its shape beautifully and roughly, and when the gold and silver light and design are fused, it emits a novel light beautifully. By applying each piece of real metal foil into a base material centered on Japanese paper, every design really has a unique feel and an expression.

The production manufacturer has a history of 100 years since 1905. And today still has continued to inherit the Japan gold leaf culture.

Our Metal Leaf Wallcoverings offer an unmatched experience in luxury and are created by a time honored process that value both tradition and innovation.



Red Shell





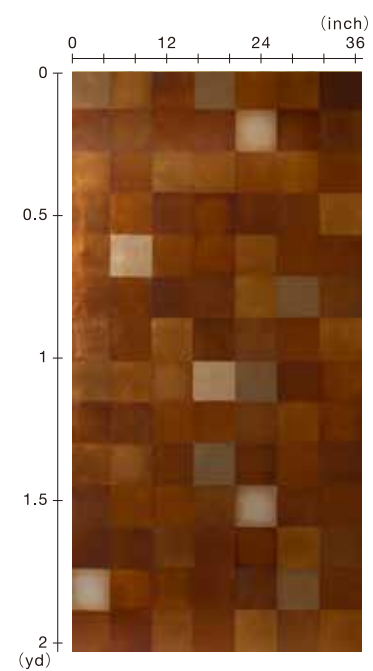
SZM-0516 [HANDMADE]

Material Chemical Silver Red Leaf / Paper

Size 36" × 8yds

Repeat 5.31" × 5.31"

It is a fumigated silver leaf in sulfur that discolor into RED by the sulfurization reaction. Silver is discolored into red, blue, and black by smoking in sulfur. The technique of smoking the silver leaf by sulfur is originally developed in Japan. It is a very special skill that can be done by limited craftsmen. Because each leaf's expression is different and not possible to produce the exact same color, there is a feature that you can actually enjoy this as a pattern.





SZM-0517 [HANDMADE]

Material Chemical Silver Red Leaf / Vinyl

Size 36" × 8yds

Repeat 5.31" × 5.31"



SZM-0518 [HANDMADE]

Material Chemical Silver Red Leaf / Matte Paper

Size 36" × 8yds

Repeat 5.31" × 5.31"



SZM-0519 [HANDMADE]

Material Chemical Silver Red Leaf / Paper / Silk

Size 36" × 3.3yds

Repeat 5.31" × 5.31"



SZM-0520 [HANDMADE]

Material Chemical Silver Red Leaf / Paper / Silk

Size 36" × 3.3yds

Repeat 5.31" × 5.31"



SZM-0521 [HANDMADE]

Material Chemical Silver Red Leaf / Paper / Silk

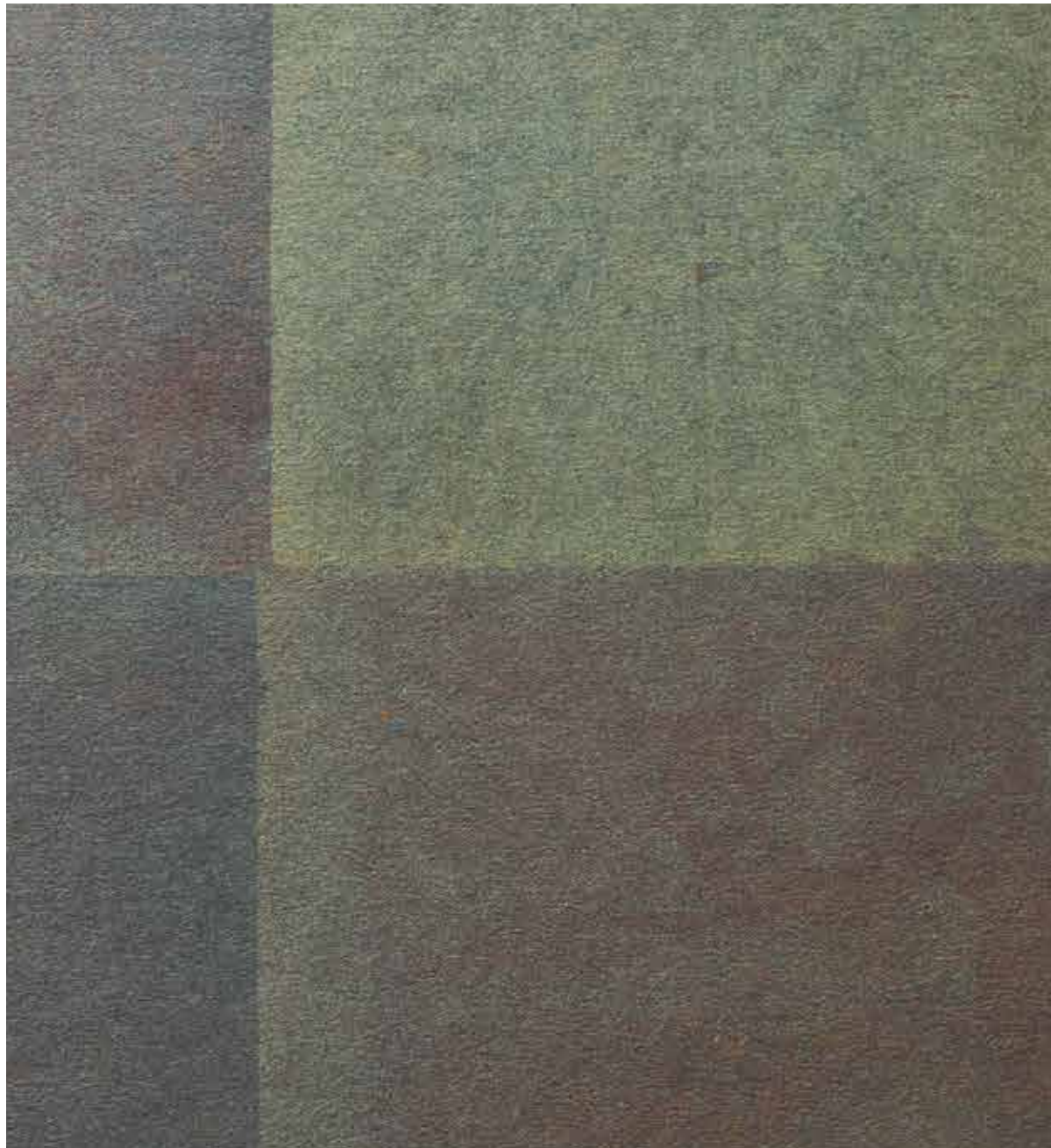
Size 36" × 3.3yds

Repeat 5.31" × 5.31"



Blue Shell





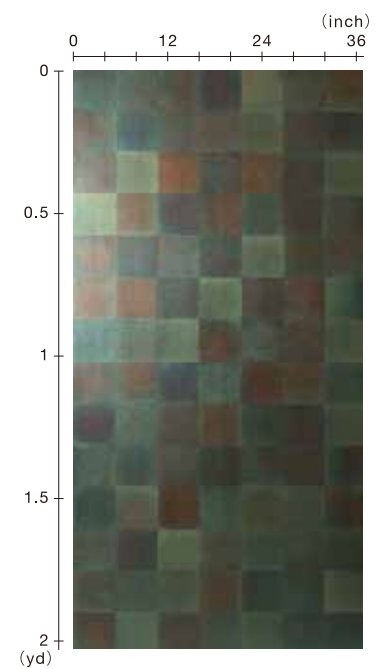
SZM-0524 [HANDMADE]

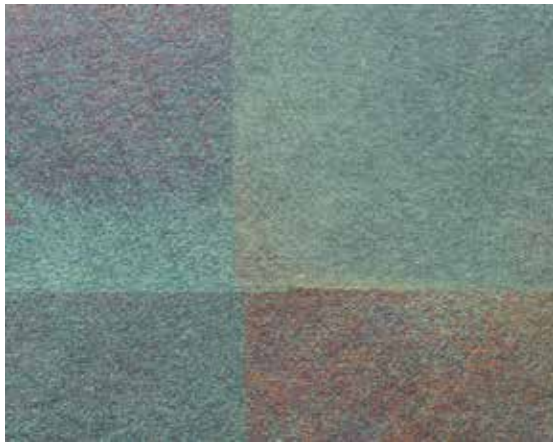
Material Chemical Silver Blue Leaf / Matte Paper

Size 36" × 8yds

Repeat 5.31" × 5.31"

It is a fumigated silver leaf with sulfur that discolor into BLUE by the sulfurization reaction. Silver is discolored into red, blue, and black by smoking in sulfur. The technique of smoking the silver leaf by sulfur is originally developed in Japan. It is a very special skill that can be done by limited craftsmen. Because each leaf's expression is different and not possible to produce the exact same color, there is a feature that you can actually enjoy this as a pattern.



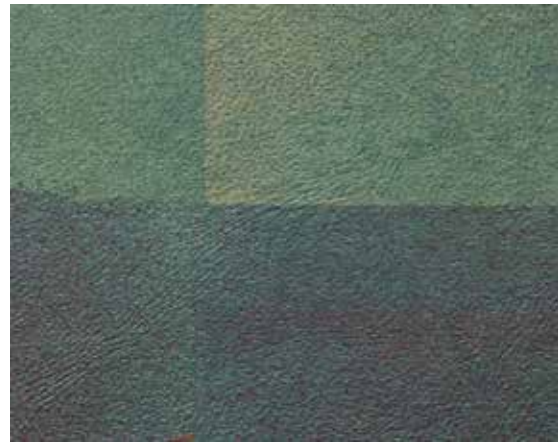


SZM-0522 [HAND MADE]

Material Chemical Silver Blue Leaf / Paper

Size 36" × 8yds

Repeat 5.31" × 5.31"



SZM-0523 [HAND MADE]

Material Chemical Silver Blue Leaf / Vinyl

Size 36" × 8yds

Repeat 5.31" × 5.31"



SZM-0525 [HAND MADE]

Material Chemical Silver Blue Leaf / Paper / Silk

Size 36" × 3.3yds

Repeat 5.31" × 5.31"



SZM-0526 [HAND MADE]

Material Chemical Silver Blue Leaf / Paper / Silk

Size 36" × 3.3yds

Repeat 5.31" × 5.31"



SZM-0527 [HAND MADE]

Material Chemical Silver Blue Leaf / Paper / Silk

Size 36" × 3.3yds

Repeat 5.31" × 5.31"



SZM-0528

Black Shell





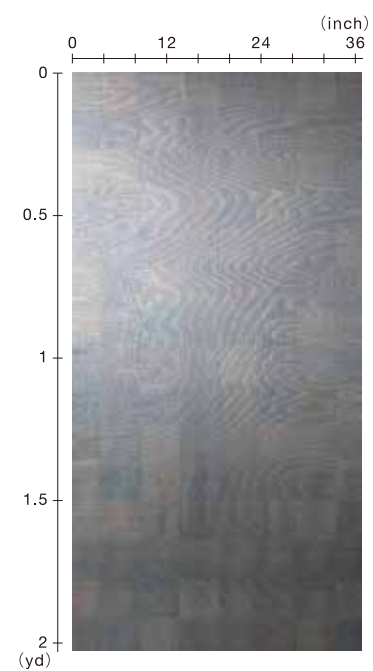
SZM-0533 [HANDMADE]

Material Chemical Silver Black Leaf / Paper / Silk

Size 36" × 3.3yds

Repeat 4.88" × 4.88"

It is a fumigated silver leaf with sulfur that discolor into BLACK by the sulfurization reaction. Silver is discolored into red, blue, and black by smoking in sulfur. The technique of smoking the silver leaf by sulfur is originally developed in Japan. It is a very special skill that can be done by limited craftsmen.





SZM-0528 [HANDMADE]

Material Chemical Silver Black Leaf / Paper

Size 36" × 8yds

Repeat 4.88" × 4.88"



SZM-0529 [HANDMADE]

Material Chemical Silver Black Leaf / Vinyl

Size 36" × 8yds

Repeat 4.88" × 4.88"



SZM-0530 [HANDMADE]

Material Chemical Silver Black Leaf / Matte Paper

Size 36" × 8yds

Repeat 4.88" × 4.88"



SZM-0531 [HANDMADE]

Material Chemical Silver Black Leaf / Paper / Silk

Size 36" × 3.3yds

Repeat 4.88" × 4.88"



SZM-0532 [HANDMADE]

Material Chemical Silver Black Leaf / Paper / Silk

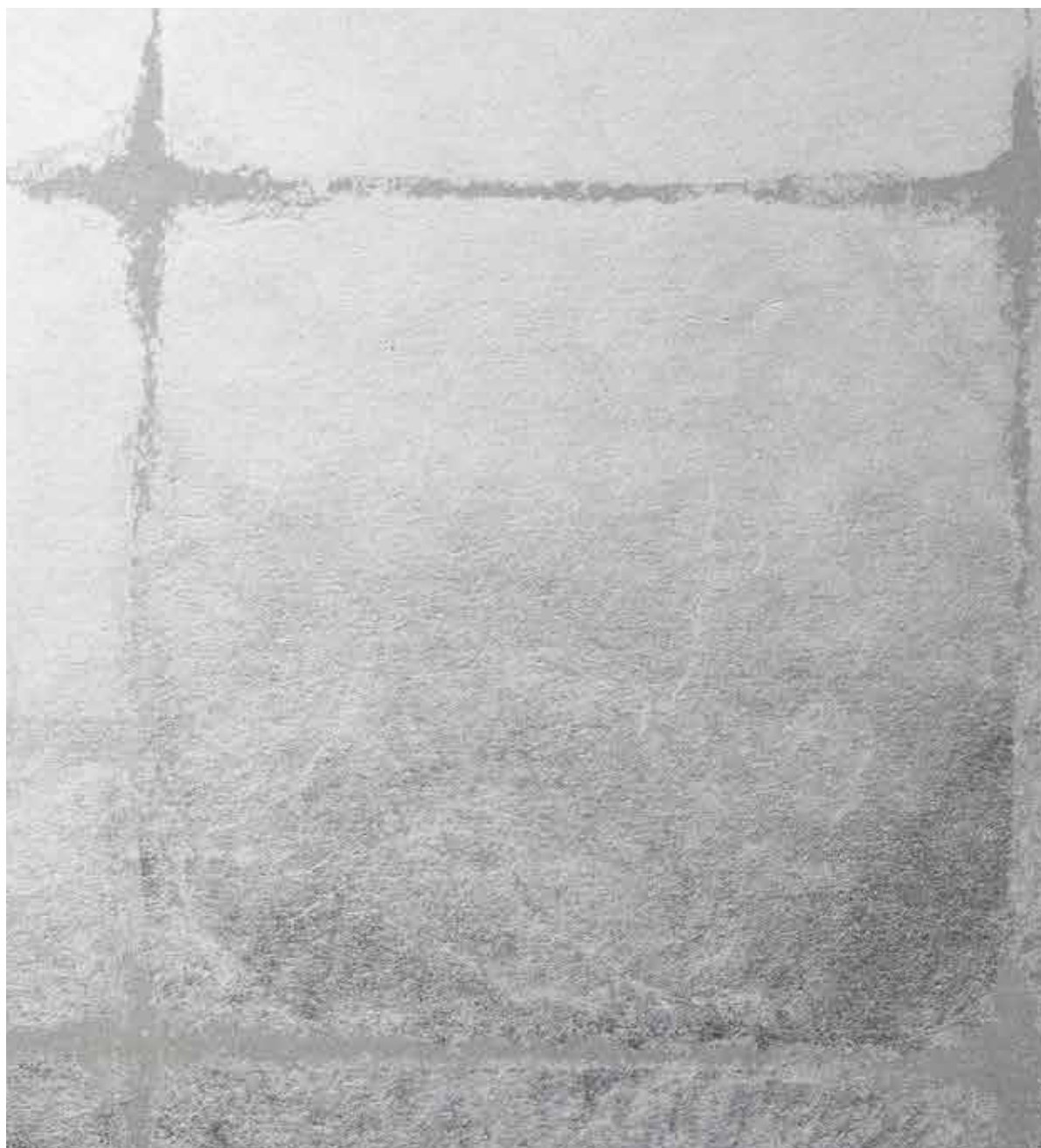
Size 36" × 3.3yds

Repeat 4.88" × 4.88"



Swish





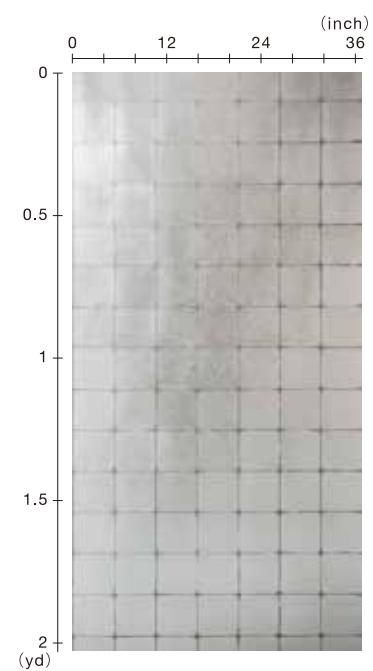
SZM-0535 [HANDMADE]

Material Silver Leaf / Paper

Size 36" × 8yds

Repeat 5.12" × 5.12"

Compared to other materials, silver tends to age over the years, however, it proves that is made out of genuine silver. The material that allows you to feel the high aesthetic sense of Japan that enjoys aging.





SZM-0461 [HANDMADE]

Material Silver Leaf / Paper

Size 36" × 8yds

Repeat 6.18" × 6.18"



SZM-0465 [HANDMADE]

Material Silver Leaf / Paper

Size 36" × 8yds

Repeat 6.18" × 6.18"



SZM-0466 [HANDMADE]

Material Silver Leaf / Paper

Size 36" × 8yds



SZM-0534 [HANDMADE]

Material Silver Leaf / Matte Paper

Size 36" × 8yds

Repeat 6.18" × 6.18"



SZM-0536 [HANDMADE]

Material Silver Leaf / Paper / Silk

Size 36" × 3.3yds

Repeat 6.18" × 6.18"



SZM-0537 [HANDMADE]

Material Silver Leaf / Paper / Silk

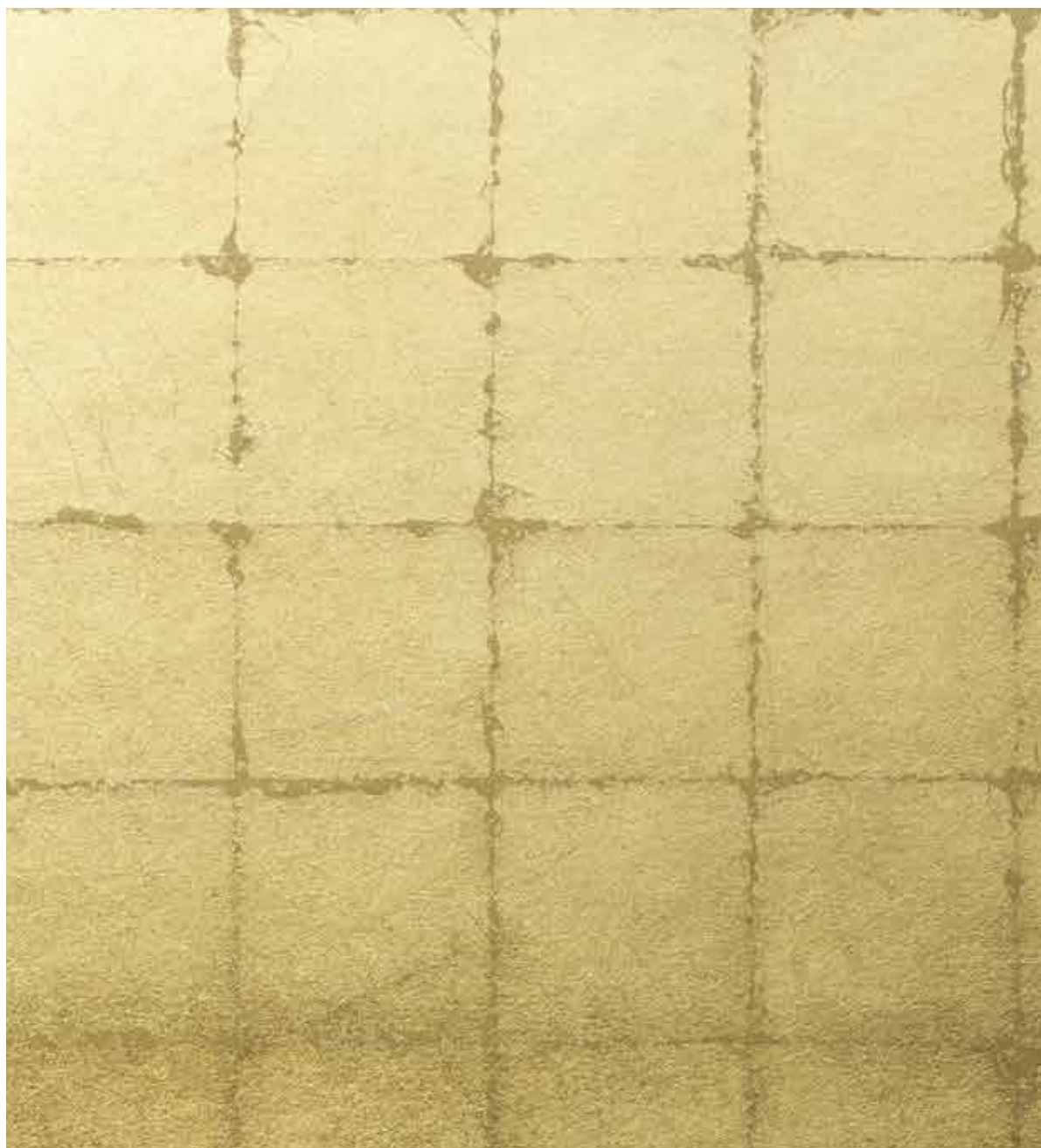
Size 36" × 3.3yds

Repeat 6.18" × 6.18"



Glossy





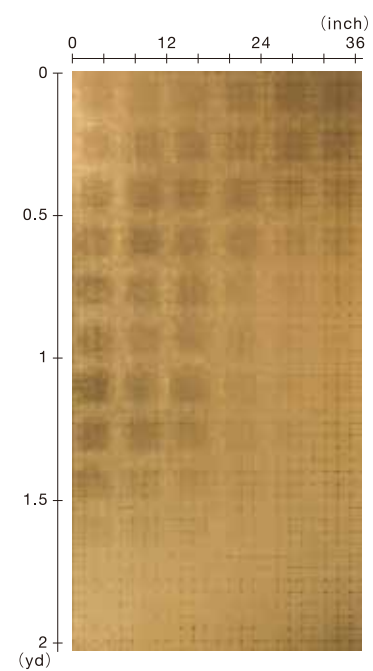
SZM-0551 [HAND MADE]

Material Brass Leaf / Paper

Size 36" × 8yds

Repeat 1.53" × 1.53"

A foil made from brass, an alloy of copper and zinc. It has been imported since the mid 1800s in Japan, and is also called brass leaf or red copper leaf. It is golden in color and is useful as a substitute for gold leaf, and is currently used in various places because of its high cost-effectiveness.





SZM-0541 [HANDMADE]

Material Brass Leaf / Paper

Size 36" × 8yds

Repeat 6.18" × 6.18"



SZM-0542 [HANDMADE]

Material Brass Leaf / Vinyl

Size 36" × 8yds

Repeat 6.18" × 6.18"



SZM-0543 [HANDMADE]

Material Brass Leaf / Matte Paper

Size 36" × 8yds

Repeat 6.18" × 6.18"



SZM-0544 [HANDMADE]

Material Brass Leaf / Paper

Size 36" × 8yds

Repeat 5.12" × 5.12"



SZM-0545 [HANDMADE]

Material Brass Leaf / Paper / Silk

Size 36" × 3.3yds

Repeat 6.18" × 6.18"



SZM-0546 [HANDMADE]

Material Brass Leaf / Paper / Silk

Size 36" × 3.3yds

Repeat 6.18" × 6.18"



SZM-0554

Cloud Burst





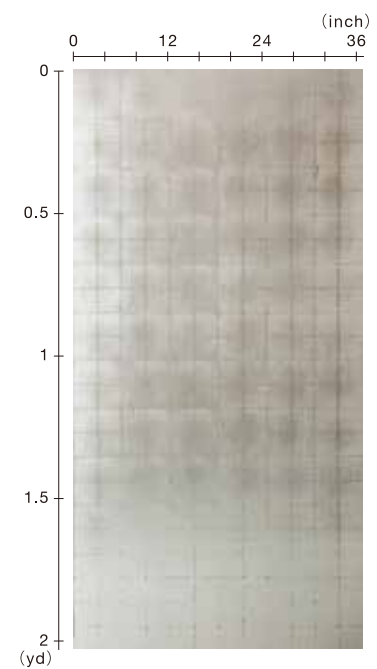
SZM-0563 [HANDMADE]

Material Alminum Leaf / Paper

Size 36" × 8yds

Repeat 3.07" × 3.07"

Foil made from aluminum. It does not change color and is economical, so it can be used relatively casually. It is also frequently used materials for our design development.





SZM-0460 [HANDMADE]

Material Alminum Leaf / Paper

Size 36" × 8yds

Repeat 6.18" × 6.18"



SZM-0554 [HANDMADE]

Material Alminum Leaf / Paper

Size 36" × 8yds

Repeat 6.18" × 6.18"



SZM-0555 [HANDMADE]

Material Alminum Leaf / Vinyl

Size 36" × 8yds

Repeat 6.18" × 6.18"



SZM-0556 [HANDMADE]

Material Alminum Leaf / Matte Paper

Size 36" × 8yds

Repeat 6.18" × 6.18"



SZM-0557 [HANDMADE]

Material Alminum Leaf / Paper

Size 36" × 8yds

Repeat 5.12" × 5.12"



SZM-0558 [HANDMADE]

Material Alminum Leaf / Paper / Silk

Size 36" × 3.3yds

Repeat 6.18" × 6.18"



Zanzibar





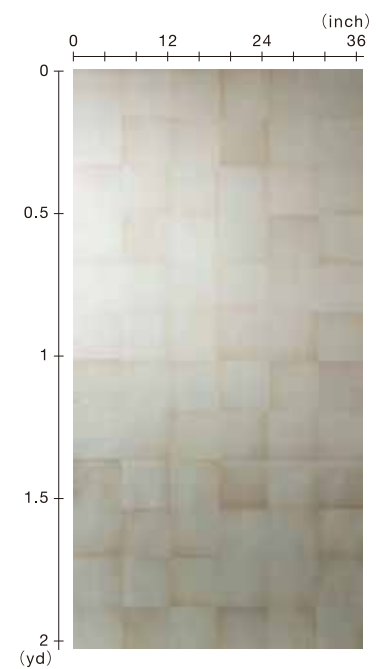
SZM-0569 [HANDMADE]

Material Pewter Leaf / Paper / Silk

Size 36" × 3.3yds

Repeat 6.18" × 6.18"

It is a leaf made of pewter. It is the most popular leaf. Each leaf has a different taste by its nature, so it blends into any kind of Japanese or Western interiors. It is especially a popular material that has been used in other countries.





SZM-0459 [HANDMADE]

Material Pewter Leaf / Paper

Size 36" × 8yds

Repeat 6.18" × 6.18"



SZM-0468 [HANDMADE]

Material Pewter Leaf / Paper

Size 36" × 8yds

Repeat 1.53" × 1.53"



SZM-0469 [HANDMADE]

Material Pewter Leaf / Paper

Size 36" × 8yds

Repeat 3.07" × 3.07"



SZM-0470 [HANDMADE]

Material Pewter Leaf / Paper

Size 36" × 8yds

Repeat 5.12" × 5.12"



SZM-0565 [HANDMADE]

Material Pewter Leaf / Paper

Size 36" × 8yds

Repeat 6.18" × 6.18"



SZM-0566 [HANDMADE]

Material Pewter Leaf / Vinyl

Size 36" × 8yds

Repeat 6.18" × 6.18"



Copper Shine



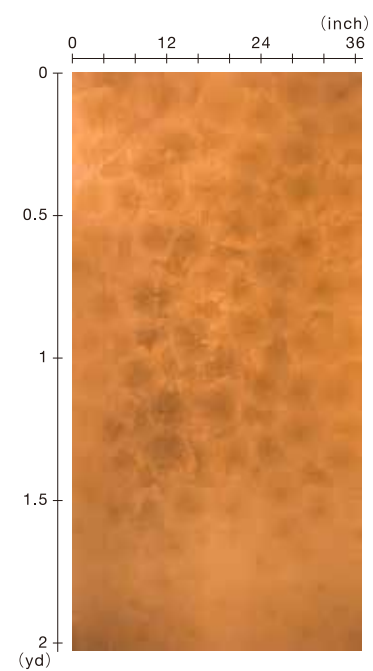


SZM-0478 [HANDMADE]

Material Copper Leaf / Paper

Size 36" × 8yds

Foil using copper. Although leaf has a relatively long history, it was not actually used much. It was only recently that it began to be treated as one of the color variations. In recent years, it has come to be used little by little as an option for materials in design development.





SZM-0471 [HANDMADE]

Material Copper Leaf / Paper

Size 36" × 8yds

Repeat 6.18" × 6.18"



SZM-0472 [HANDMADE]

Material Copper Leaf / Vinyl

Size 36" × 8yds

Repeat 6.18" × 6.18"



SZM-0473 [HANDMADE]

Material Copper Leaf / Matte Paper

Size 36" × 8yds

Repeat 6.18" × 6.18"



SZM-0474 [HANDMADE]

Material Copper Leaf / Paper

Size 36" × 8yds

Repeat 5.12" × 5.12"



SZM-0475 [HANDMADE]

Material Copper Leaf / Paper / Silk

Size 36" × 3.3yds

Repeat 6.18" × 6.18"



SZM-0476 [HANDMADE]

Material Copper Leaf / Paper / Silk

Size 36" × 3.3yds

Repeat 6.18" × 6.18"

