

# **Controller/Amplifier/Loudspeaker & harness connection**

---

# Controller

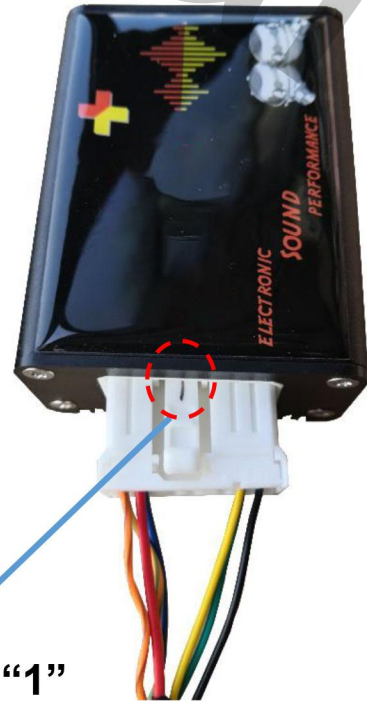
# Amplifier

Connect Plug labelled "1" with Controller

Connect Plug labelled "2" with Amplifier

Controller (small)

Amplifier (big)



Plug labelled "1"

Both plugs are right connected before ex-factory.

Wrong connection will leads to damage immediately.



Plug labelled "2"

# 12V Power Supply and CAN

1. Disassemble the plastic cover at the bottom of armrest box, which is also right before the middle of rear seat.
2. The blue plug is where to install harness adapter.



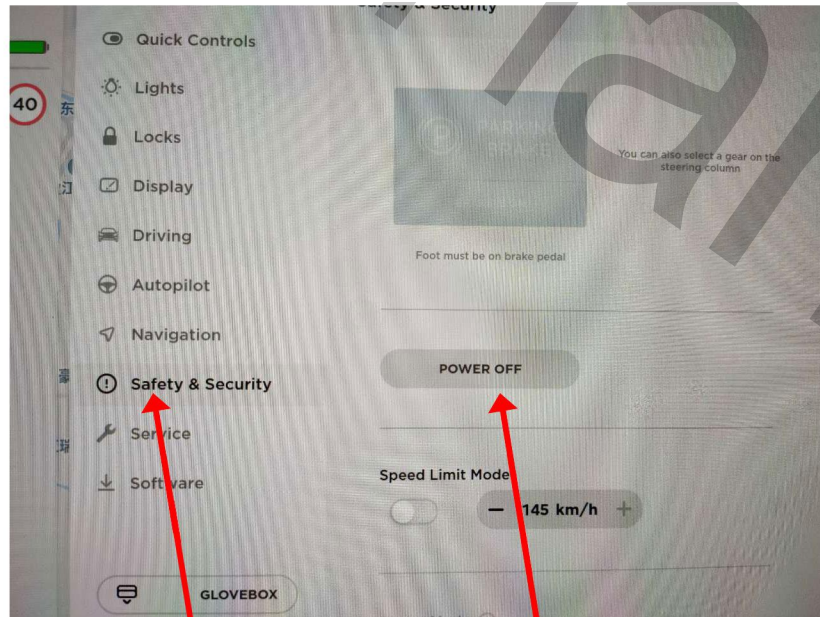
1. Plastic cover



2. **Important, make sure turn off vehicle power before un-plugging this connection.**

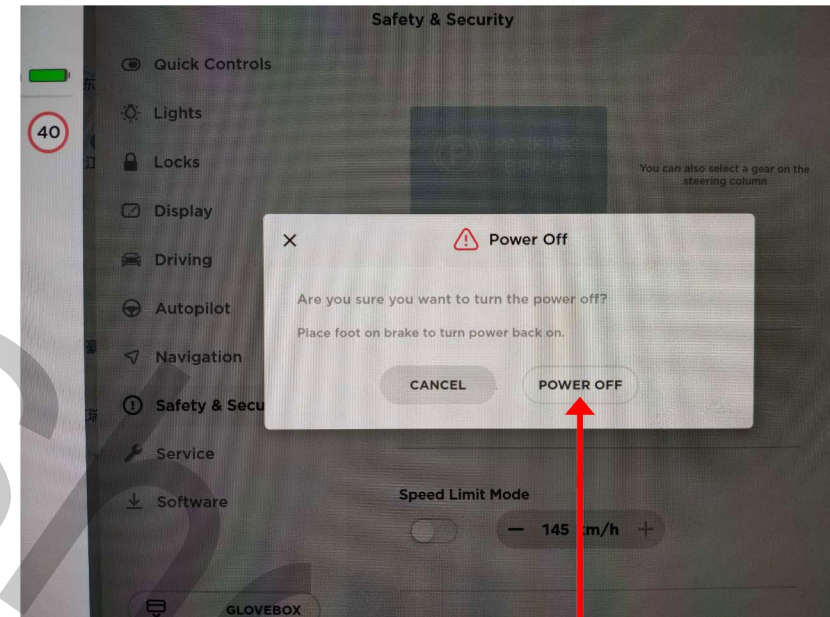
# 12V Power Supply and CAN

2. Turn off vehicle power before any action takes place. **Once the vehicle power is turned off, please keep the door open/close status, otherwise the vehicle power will be turn on again if the door re-Open/Close !**



1. Click "Safty&Guarantee"

2. Click "Power off" .

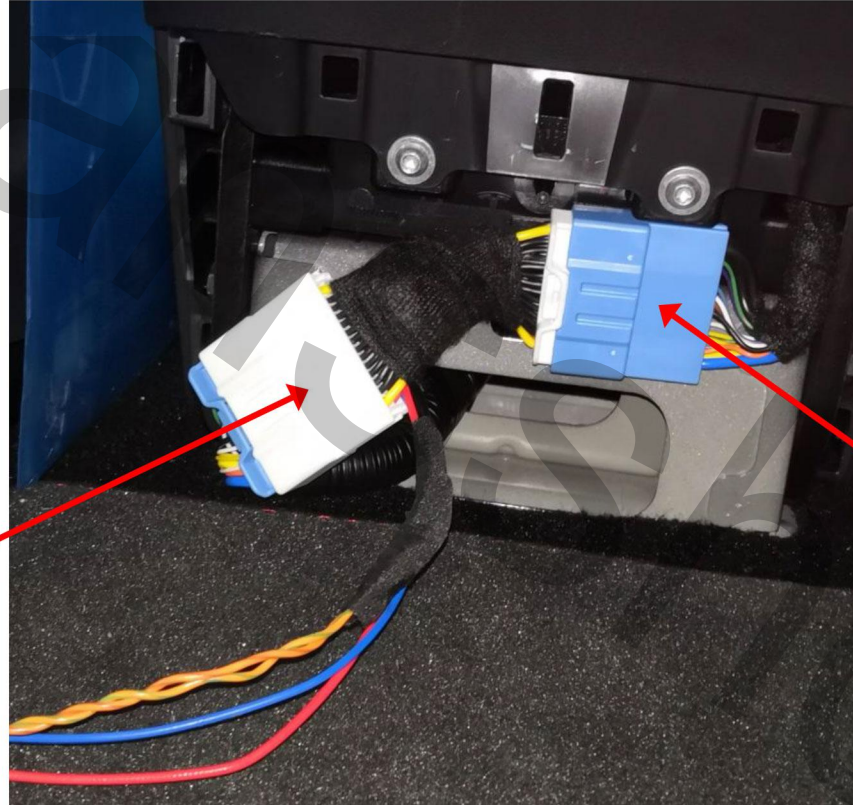


3. Click "Power Off" , and the screen turns off indicates vehicle power off.

**Important: Do not re-open/close door after turning off vehicle power, otherwise vehicle power will be on again !**

# 12V Power Supply and CAN

3. Unplug the vehicle plug and add the active sound adapter.



White active  
sound adapter.

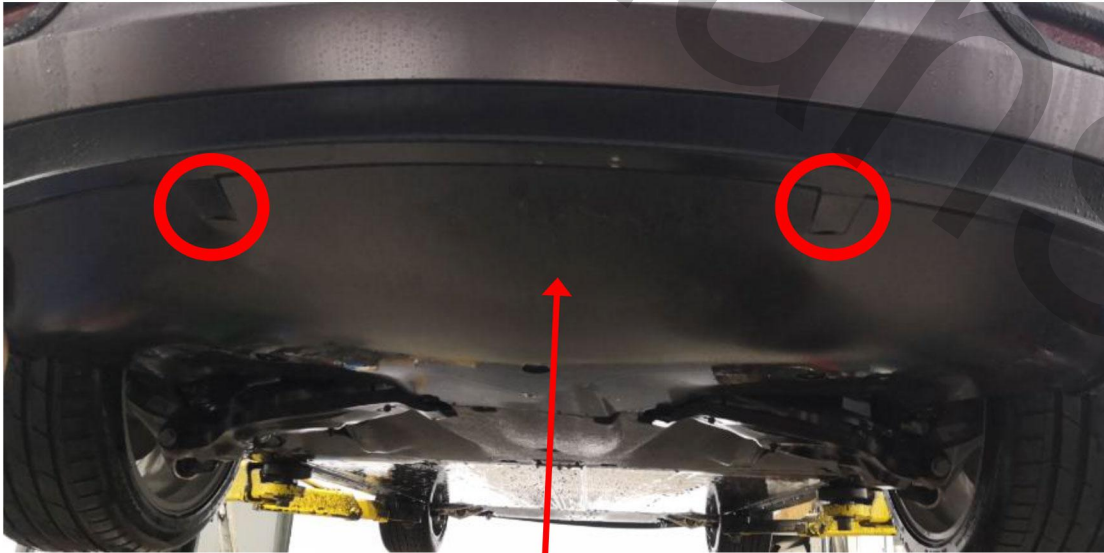
Blue vehicle plugs

# Sound Generator Installation Guide

---

# Plastic Cover Remove

Remove the plastic cover under chassis to install the sound generator.



The plastic cover to be removed。

Step 1: unscrew the screws, there are also screws underneath the cover circled by red circle.



There are clips inside the plastic cover。

# Plastic Cover Remove

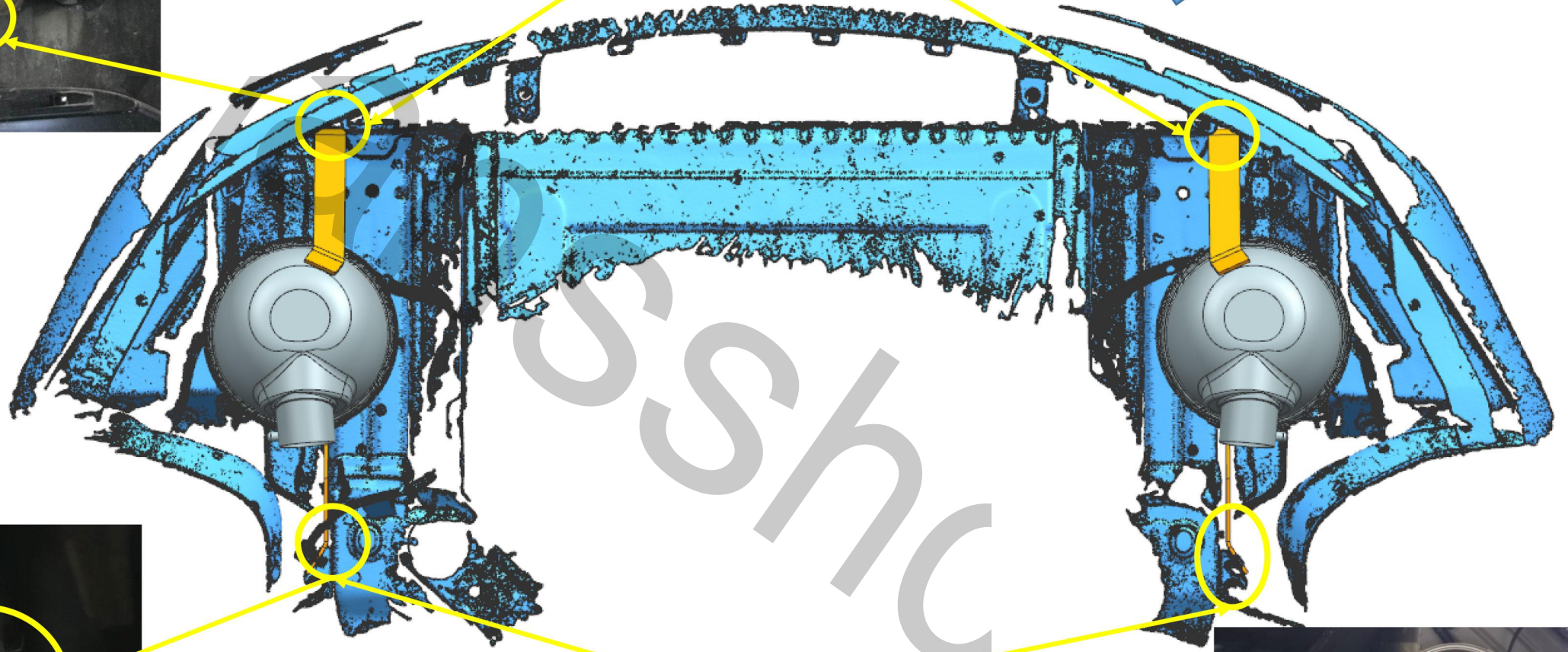
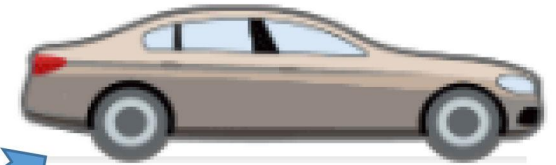
Remove the plastic cover.



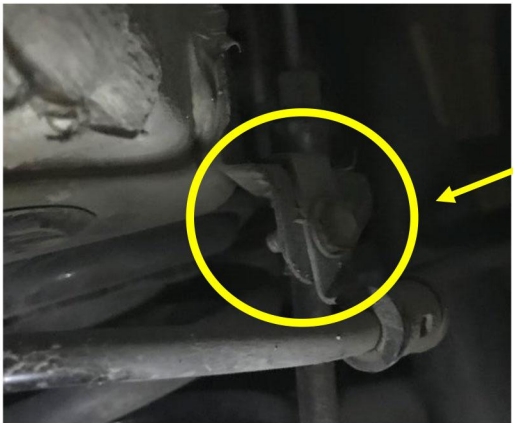
The sound generators will be installed at these two places.



M8 T-type screw and bolt



Use the vehicle M6 screw and blot.



# Picture of sound generator installed.



# Harness of sound generator

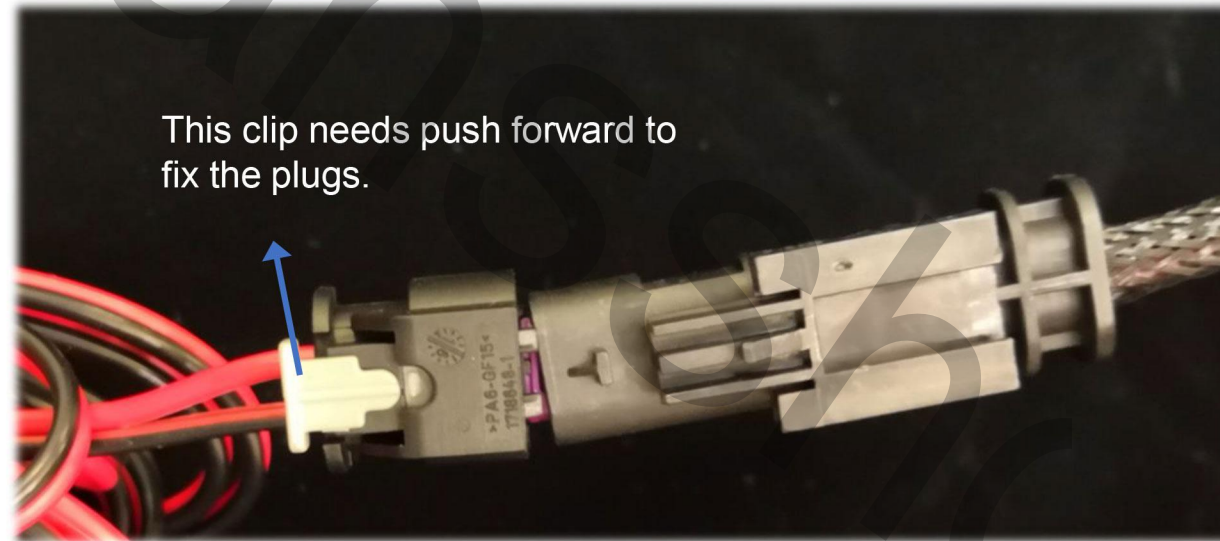
Open trunk and remove the cover can find holes, where harness can go through outside。



Holes where harness can go through outside.

# Plugs of sound generator

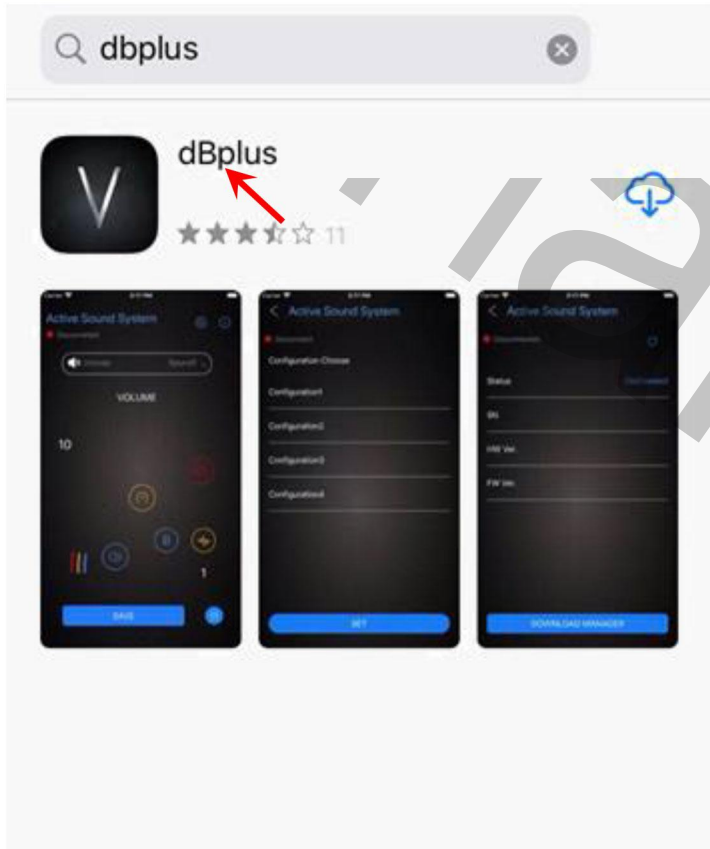
The plugs of sound generator looks like below.



# APP user guide

---

For IPHONE, please search “dBplus” in APP store.



For Android phone, please contact the distributor for install package.



1

Before open the APP, please:  
1. Turn on the Bluetooth of your phone;  
2. Power on the controller

### Active Sound System

● Disconnected

Scanning...

Scanning the controller  
via Bluetooth

2

Choose the device begin with name  
"ASSA" and press "CONNECT"

### Active Sound System

● Disconnected

#### Scanned Devices

ASSA000101

Choose the device found

Press to connect the controller

CONNECT

3

In the main screen, sound volume can  
be adjusted by sliding the blue curve.  
The maximum is 100.

### Active Sound System

● Connected

choose

Sound1

#### VOLUME

Volume number

27

Slide to adjust volume

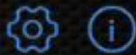
Activated this

1

4

If "RPM transfer" is adjusted to a high value, for example, the sound will be sound like 2500rpm when the car actual engine speed is at 1200rpm

### Active Sound System



Connected

choose Sound1

#### PRM TRANSFER

RPM transfer level

48

Slide to adjust

Activated this



5

Start sound can also be used to evaluate each sound without connecting to vehicle CAN;

### Active Sound System



Connected

choose Sound1

#### START SOUND

Set the Start sound configuration by press "SAVE"

Start sound level

64

Slide to adjust

Activated this



6

Sound decrease button



If activated, sound volume will be dramatically decreased



7

Sound characteristics change



If activated, sound frequency will be lifted, sound sounds more fast.



8

Turn on/off

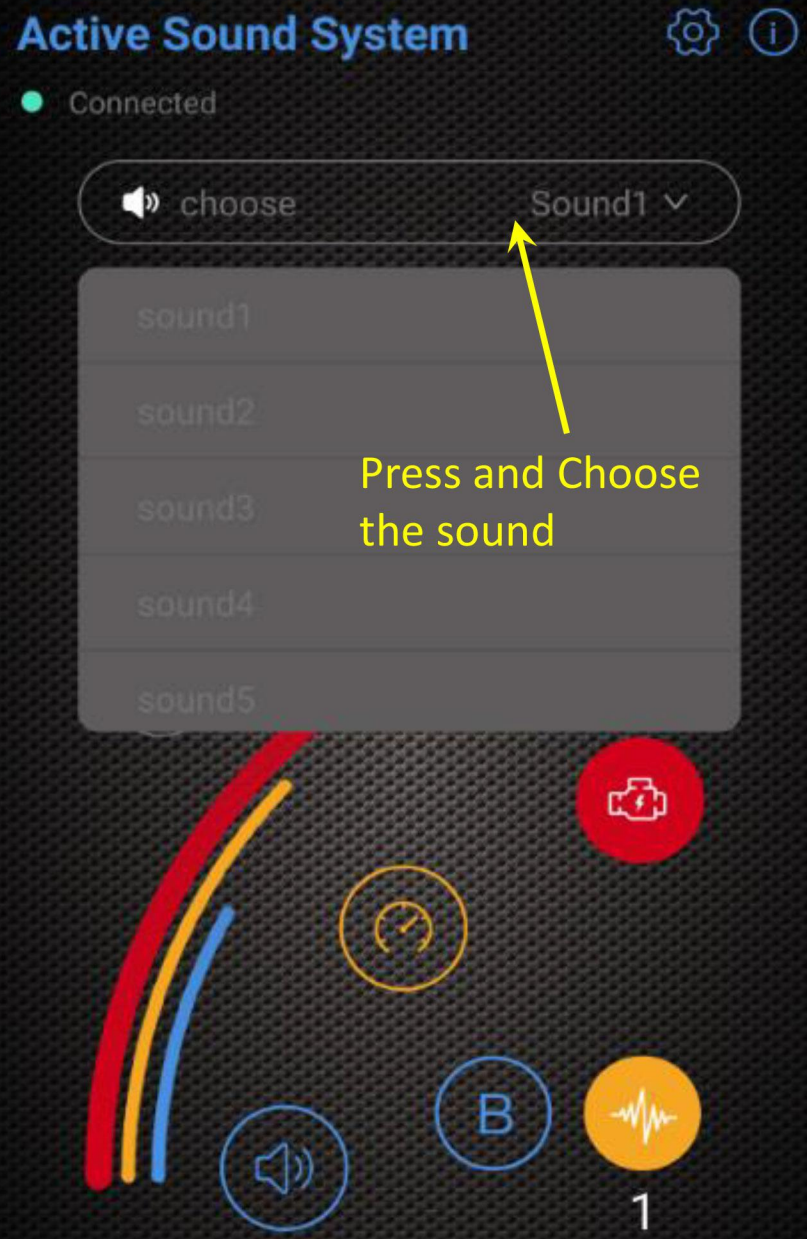


Turn on/off button



9

Sound choose



Press and Choose the sound

10

Save volume, start sound etc. into current configuration number and reuse it by choose the saved configuration.

SAVE

1

### Active Sound System

Connected

Configuration choose

#### Configuration Choose

configuration1

configuration2

configuration3

Change

11

Device information and CAN data download

### Active Sound System

Connected

Press to see device info and download CAN data

### Active Sound System

Connected

#### Device information

Status Connected

SN ASSA000101

HW ver. V2.4

FW ver. V2.1

Press to go to CAN data download page

DOWNLOAD MANAGER

12

CAN data download

Please choose your car

BRAND BMW

MODEL 3 series

YEAR F30,F31,F35(2011->)

Choose vehicle BRAND, MODEL and YEAR and then press DOWNLOAD

DOWNLOAD

13

If you cannot find your car CAN data

Please choose your car

BRAND BMW ▾

MODEL General 1 ▾

YEAR General 1 ▾

If you cannot find your car model and year, please make sure the BRAND is right and choose General 1/2/3...

DOWNLOAD

14

Download succeed

Please choose your car

BRAND BMW ▾

MODEL 3 series ▾

YEAR F20 F31 F35 (2011 -) ▾

Download succeed

OK

CAN data download succeed. This is for Android phone display, APPLE phone is similar.

DOWNLOAD

15

CAN data download failed. Please try again after 5 seconds until succeed.

BRAND BMW ▾

MODEL 2 series ▾

Download failed!  
Please try again after 5 seconds.

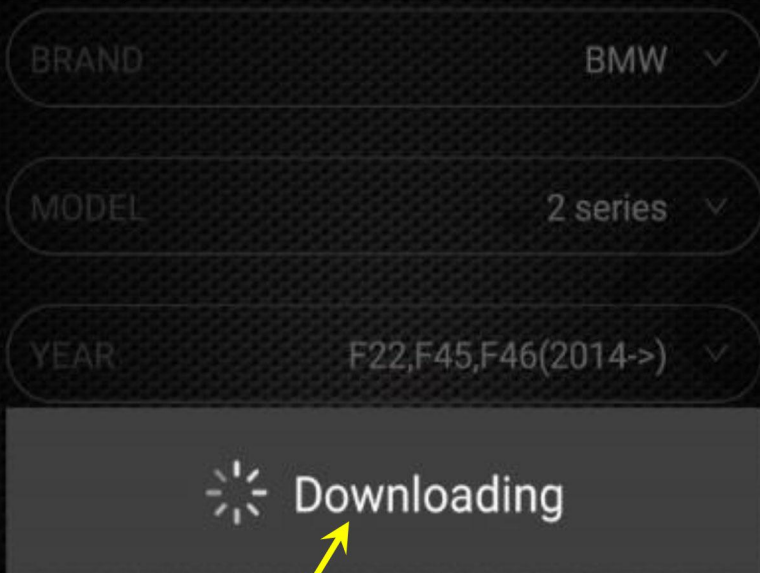
OK

CAN data download failed. Please try again after 5 seconds until the download succeed dialogue box appears.

DOWNLOAD

**16**

What needs to do if displaying  
“downloading” all the time?



If “Downloading” is displaying longer  
than half an minute,

1. Press any other place of the screen,
2. Go back to the information page,
3. Re-enter the “Download manager”  
page and re-download the CAN  
data.

DOWNLOAD

**17**

Reserved blank

**18**

Reserved blank

# Virtual Gear Change

---

# About virtual gear change

Here we use Porsche 911 gear ratio for TESLA Model 3 virtual gear change.

## 1. Urban Drive

No gear change.

## 2. Common Accelerate

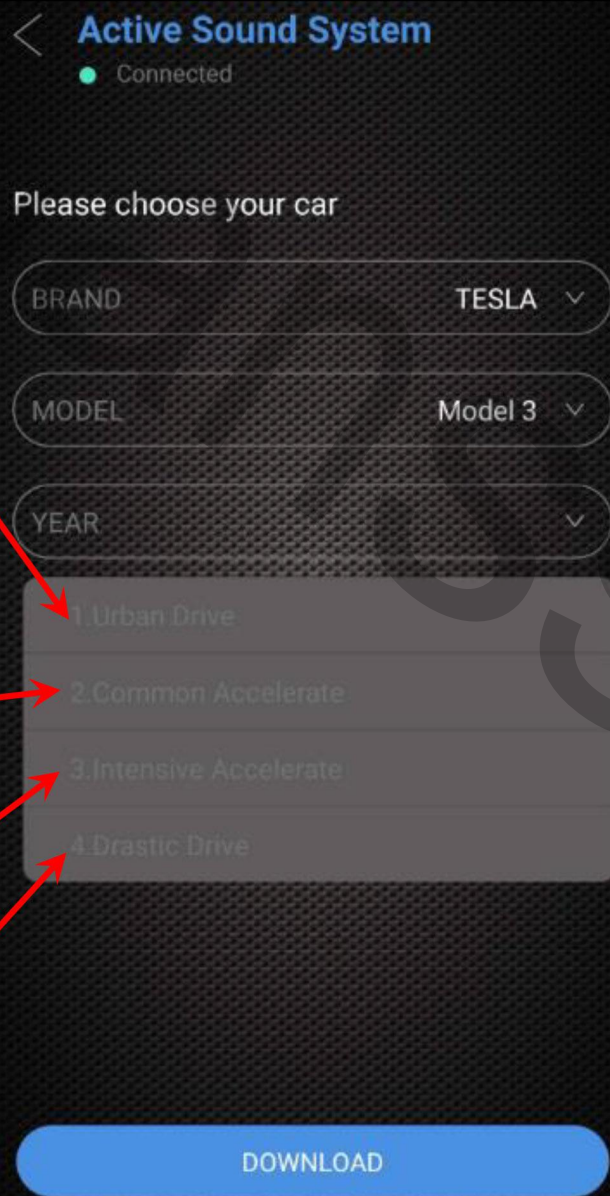
Gear change corresponds to 3000rpm of 911.

## 3. Intensive Accelerate

Gear change corresponds to 4000rpm of 911.

## 4. Drastic Drive

Gear change corresponds to 5000rpm of 911.



This is only the CAN data selection of your vehicle, not the simulated sound.

The number of CAN data download for each module is 5, e.g. for model 3, you only need download these 4 CAN data to your module (one at a time), do not download BMW/BENZ/AUDI etc. CAN data, which does not work for your vehicle and will waste limited download times.

One can download the same CAN data for unlimited times. For example, you can download '1. Urban Drive' for unlimited times.

For example, your current status is '1. Urban drive', if you want virtual 3000rpm gear change, then download '2. Common Accelerate'.

# FAQ

---

Hansshow

**Q: Why the volume is not loud enough even I set the volume to 100?**

A: The sound decrease button may be activated when you install the APP in the first time, press the sound decrease button 1~3 times to have a louder sound;



“Sound decrease button”, the sound volume will dramatically decrease when it’s activated.

**Q: Why the sound is strange (absence of low frequency feeling) when two loudspeakers connected? And when only one loudspeaker is used, why it sounds better?**

A: The sound has not only amplitude but also PHASE information. If the two loudspeakers are anti-phase, the low frequency sounds emitted by the two loudspeakers will cancel each other, which works similar as the active sound cancelling headphone.

You just need change the two terminals position of one of the loudspeaker to make the two loudspeakers have the same PHASE. As show in the following figure, wire position of “RED (up) Black (Down)” has been changed to “RED (down) Black (up)”

If you think two loudspeakers still cannot meet your requirement, we can extend to 3,4,5...loudspeakers as you wish. But first you should check whether you have enough space to install more loudspeakers.



**Q: Why I cannot download the CAN data successfully?**

A: Please make sure your phone internet connection is OK first.

APPLE phone can almost 100% successfully download by pressing the “DOWNLOAD” button one time.

For Android phones, due to the Bluetooth connection is more complex, you may need try a few more times until the dialog box “Download succeed” appears.



**Q: Why I change the number of “RPM transfer”, I can not hear the sound changes?**

A: The effect of “RPM transfer” can be observed when you drive the car. If your car is not moving, it’s hard to tell the difference, since the purpose of “RPM transfer” is to have high engine speed sound at physically low engine speed of the real car.

Hansshow

If you do not need active sound for dairy drive, you can set the default dairy sound volume as following steps.

If you want hear sound again, do the opposite steps.

**Step 1:**  
Adjust the volume to lowest level

**Step 3:**  
Click 'SAVE'

**Step 2:**  
Activate this button.

