

Snow
517918



Snow 517918 White 518802 Wheat 532614 Leapfrog 518780 Seafoam 518418 Reflection 532612



Lite Gray 518781 Natural 517908 Beige 518424 Grass 532618 Jade 518421 Light Teal 518420



Gray 517423 Saddle Tan 517730 Coffee Cream 518768 Emerald 518772 Sea Grass 518419 Aqua 532616



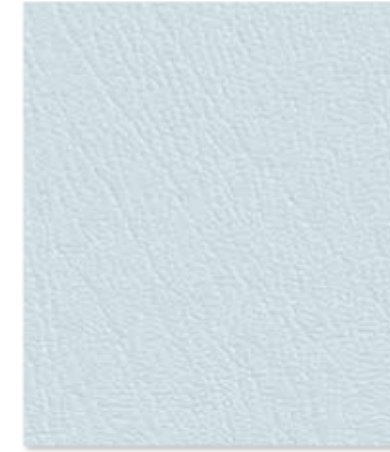
Gris 532615 Outback 518790 Camelback 518423 Vizcaya Palm 518386 Spruce 518417 Blue Nile 518762



Cadet 518766 Pumice 518634 Bucksuede 518636 Everglade 518773 Hunter Green 518779 Horizon Blue 518635



Black 517420 Tea Leaf 518799 Green Tea 518777 Harbour 518778 Slate 517701 Raintree 518794



Dream
532613



Magenta
532619



Manzanita
521374



Marigold
523426



Very Berry
523027



Nasturtium
517921



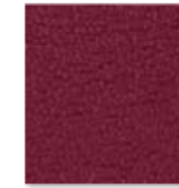
Candy Apple
518767



Cerulean
532617



Neptune
517424



Grape
518775



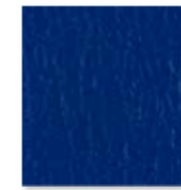
Allspice
518760



Persimmon
518791



Berry
518761



Bluejay
518703



Marina
518784



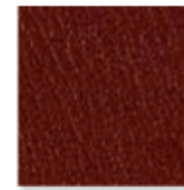
Wood Violet
518804



Deep Clay
518771



Tomato
518800



Port
518792



Midnight Blue
518785



Blueberry
518763



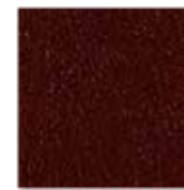
Purple Iris
517919



Chocolate
518422



American Beauty
520202



Cordovan
518770



Colonial Blue
518769



Regal Blue
518705



New Purple
520053



Fudge
517922



Red Cent
518795



Burgundy
518765



Navy
517920



Royal Blue
518796



Coal
518647



Otter
518789



New Burgundy
518787



Black Plum
517421



Content	100% PVC face, polyester jersey knit backing
Finish	PreFixx ® protective finish for increased stain resistance and easy cleaning. Bleach cleanable and may be disinfected with a variety of hospital grade disinfectants without discoloring or damaging the finish. Disinfection does not replace the need for regular care and maintenance.
Width	54 in. [137 cm]
Weight	36 oz/lin. yd. [24 oz/yd ²] / 1,089 g/lin. m [794 g/m ²]
Performance Requirements	Meets or exceeds ACT® Performance Guidelines



Also meets or exceeds:

- CFFA-1a wyzenbeek - 1.3 million double rubs abrasion (cotton duck abradant)
- Fungal resistance ASTM G-21-13
- Bacterial resistance AATCC 147-2011 & AATCC 100-2004
- BIFMA, Class A
- Boston Fire Dept. IX-1
- California Technical Bulletin 117-2013, Section 1
- FAR 25.853a & Appendix F Part 1 (a)(1)(ii)
- Federal Specification CID A-A-2950A
- FMVSS-302
- IMO Part 8 Upholstered Furniture 3.1 Smoldering Cigarette
- IMO Part 8 Upholstered Furniture 3.2 Propane Flame
- NFPA 701 Small Scale
- NFPA 260, Class 1
- Port Authority of NY/NJ
- UFAC Fabric, Class 1

Applications	Indoor/Outdoor	• Food Service
	• Corporate Office	• Hospitality and Entertainment
	• Healthcare	• Retail
	• Recreational Vehicles	



Though our upholstery can be used in many applications, customers are responsible for selecting an upholstery with attributes that meet the requirements of the specific end-use application – not all upholstery is suitable for all applications.

Multiple factors affect fabric durability and appearance retention, including end-user application and proper maintenance. Wyzenbeek results above 100,000 double rubs have not been shown to be a reliable indicator of increased fabric lifespan.

For additional cleaning instructions and detailed specification information, visit: www.omnova.com

