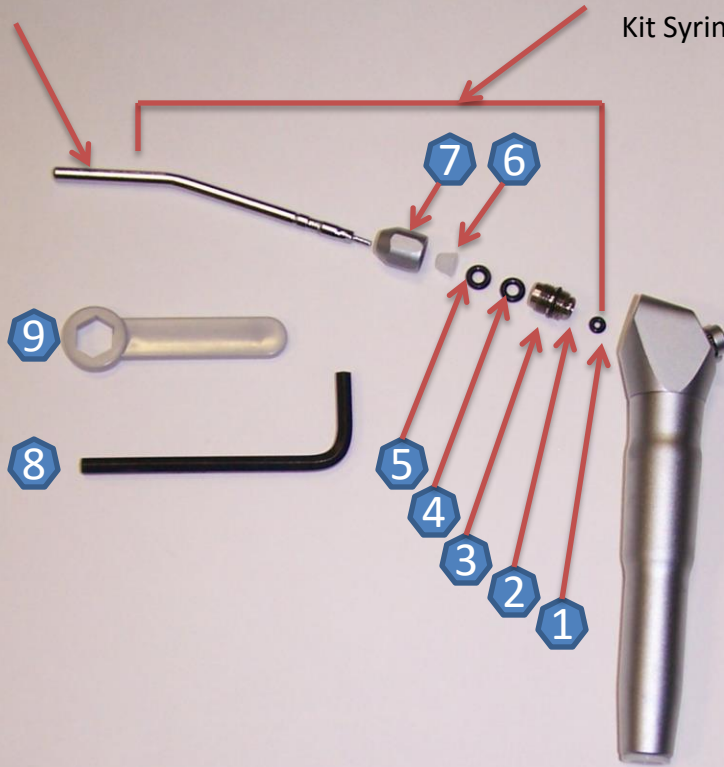


30-0002.00.00 Syringe 3-Way
Installation Instructions
Locking Syringe Tip Kit

30-0002.00.01
Syringe Tip

30-0002.00.02
Kit Syringe Tip



Installation Instruction

Remove threaded barrel and nut assembly from syringe using the standard wrench supplied with syringe.

Place O-Ring (1), in base of the threaded barrel, (2), Which is the opposite end from the hex socket.

Using the hex allen wrench (8), insert the threaded Barrel into the syringe head.

Place O-Ring (3), on the threaded barrel below the threads contacting the syringe head.

Insert the syringe tip through the tip nut (7). Slide the cone (6), onto the tip followed by the two O-Rings (4&5).

Insert the tip into the barrel, slide the nut down and screw it on by hand. Use the wrench (9), to tighten the nut, locking the tip in place.

The tip may be removed by simply loosening the nut.

Trouble Shooting

Problem: Water leak at tip.
Cure: Replace O-Ring on cartridge stem.

Problem: Short burst of water when air is applied.
Cure: Replace small O-Ring at rear of threaded barrel assembly.

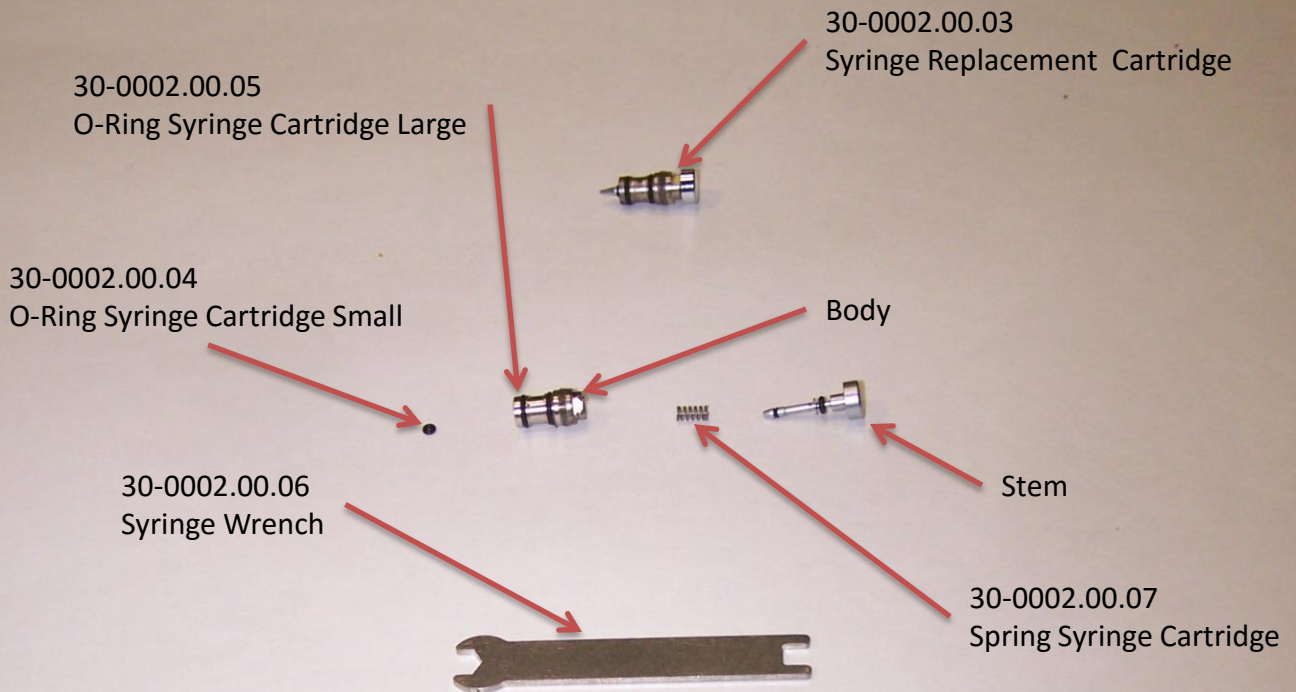
Problem: Water leak around threads of cartridge.
Cure: Replace O-Ring around outside of cartridge.

Problem: Spray pattern not uniform.
Cure: Clogged tip, clean or replace.

Syringe Service

Caution:

Turn Main Air and Water Supply Off Before Servicing Syringe.



Replace Cartridge

- 1) After main air and water supply is off, depress both air and water buttons to relieve any static pressure.
- 2) Place service tool over the flats (found under button) and turn cartridge counter-clockwise to remove.
- 3) Lubricate new cartridge o-rings lightly with o-ring lube or petroleum jelly.
- 4) Push new cartridge into syringe head using service tool, turn clockwise until snug.
DO NOT OVER TIGHTEN

Syringe Cartridge

- 1) Remove small o-ring at tip of cartridge. Be careful to not cause any damage to stem.
- 2) Pull stem from body noting small spring found inside.
- 3) Replace both o-rings around body, lightly lubricating new ones before installation.
- 4) Place new spring over stem and insert assembly into body. Install new o-ring onto tip of stem.