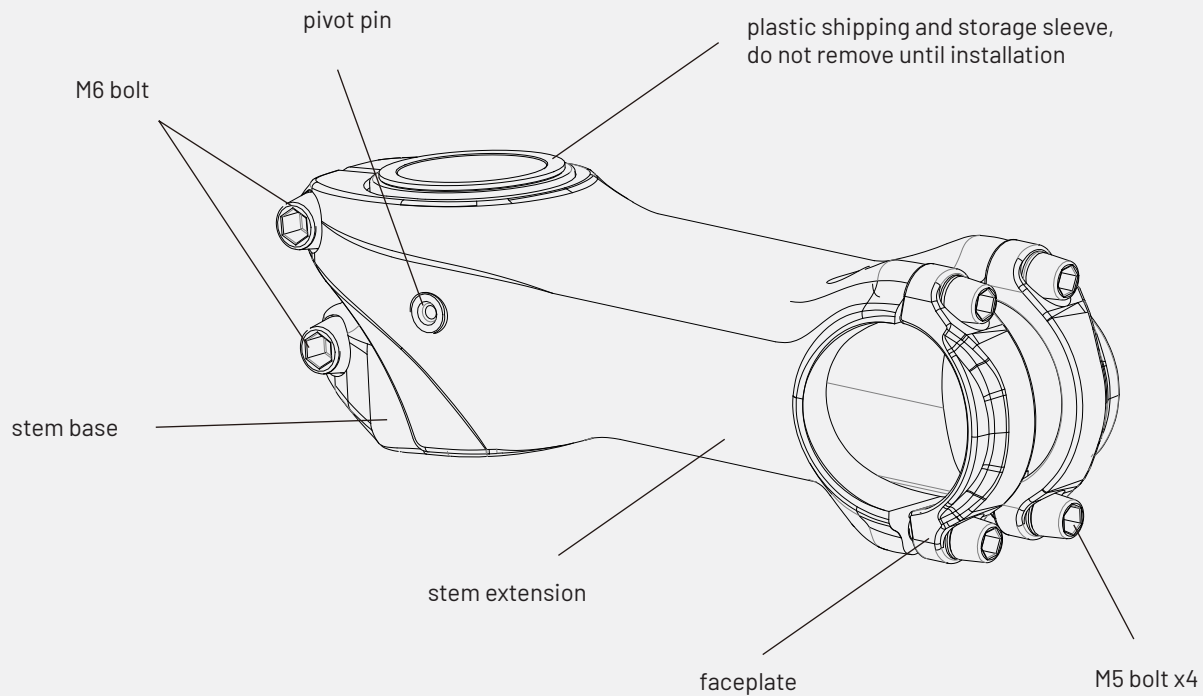


ANTISHOCK STEM

INSTALLATION MANUAL

TranzX

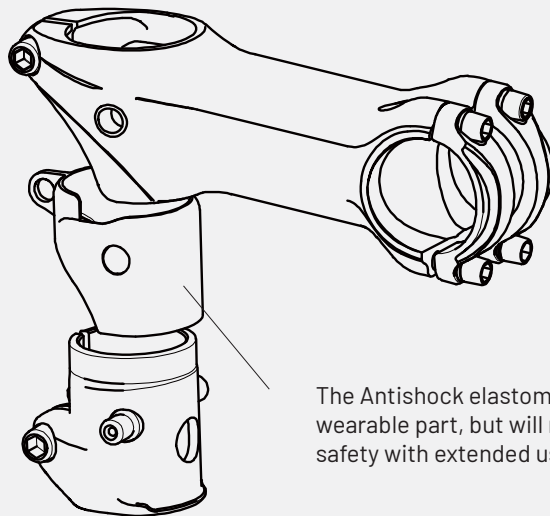
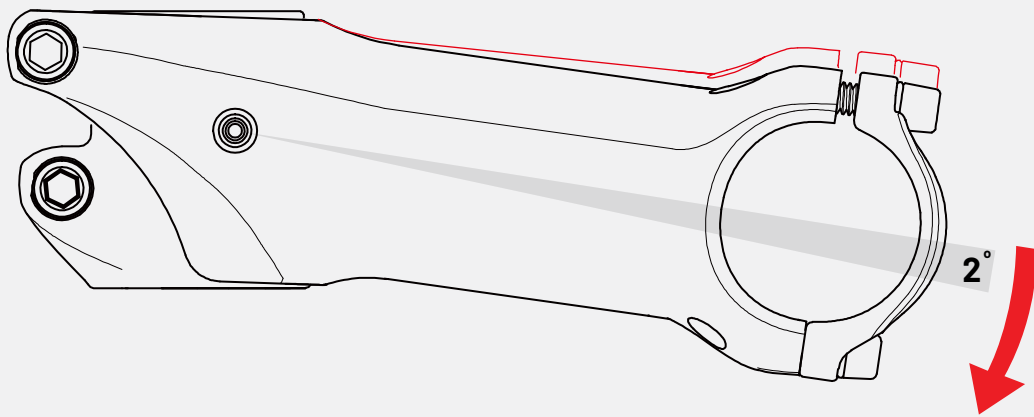




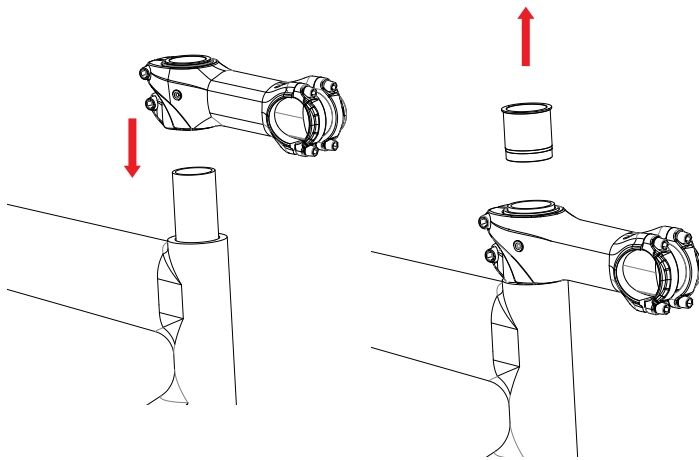
This installation manual is for TranzX Antishock Stem.

WARNING: DO NOT DRILL OR MODIFY YOUR FRAME OR FORK IN ANY WAY. Doing so will void the warranty. Modification of your frame or fork in any way may result in frame failure which may result in serious injury or death.

Antishock vibration damping is achieved through a two part stem and a specially engineered elastomer insert that allows the stem to provide up to 2° of vertical displacement about the pivot pin.

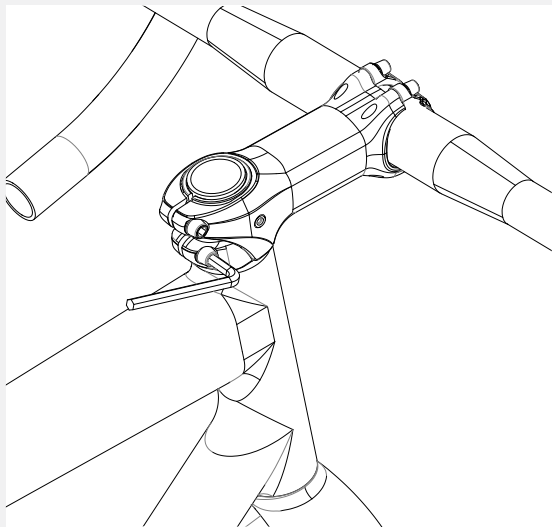


The Antishock elastomer insert is a wearable part, but will not affect safety with extended use.



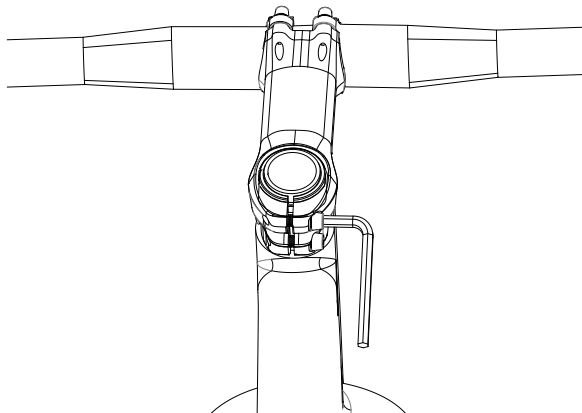
1

Place stem on 1 1/8" fork steerer, removing plastic shipping sleeve as stem slides on the fork steerer. Follow all instructions and precautions of fork manufacturer regarding star nut or compression plug use.



2

Tighten lower stem clamp bolt to 8Nm.



3

Tighten upper stem clamp bolt to 6-10Nm. Upper bolt torque is variable within 6-10Nm range to adjust vibration damping.

WARRANTY

This stem is warranted for a period of 2 years from the date of purchase against defects in workmanship. The warranty is expressly limited to the repair or replacement of the defective part at TranzX USA's option and is the sole remedy of the warranty. The warranty applies only to the original owner and is not transferrable. Proof of purchase is required to validate warranty eligibility. The warranty does not cover normal wear and tear, routine maintenance, improper installation or improper use of the stem. Modification of the stem in any manner shall void the warranty. TranzX USA Shall not be responsible for incidental or individual costs incurred that are not covered by this warranty. The user assumes the risk of any personal injury or property damage, including damage to the stem and any other losses, if the stem is modified or improperly used at any time. This warranty gives the consumer specific legal rights which vary from state to state.