

# SONTRO<sup>®</sup>

Self-Fitting OTC Hearing Aids

Quick Start Guide



[hearsoundwave.com](https://hearsoundwave.com)

SWH-97402.A6\_v10

## WELCOME!

With Sontro® **Self-Fitting** OTC Hearing Aids, you are back in control of the sounds around you, thanks to customizable software and advanced hearing technology. Let's get started!

### Download the otoTune app



You will need the otoTune app to personalize your device. Search for 'otoTune' in the App Store or on Google Play and sign up for a Soundwave account.

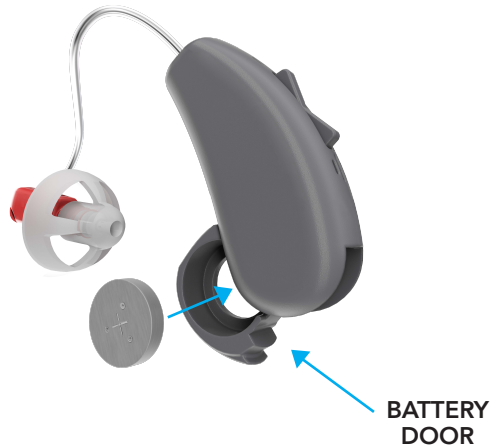
The Sontro OTC Hearing Aids User Manual and how-to videos are located on [hearsoundwave.com](https://hearsoundwave.com)

Please see the Terms of Use for the otoTune app when downloading to your mobile phone.

Android™ and Google Play are trademarks owned by Google LLC  
iPhone® and App Store® are registered trademarks of Apple, Inc.

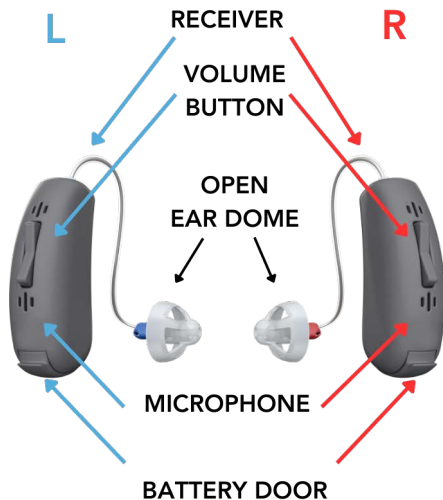
## POWERING ON AND OFF

Open the battery door to power off the hearing aid when not in use. To open, gently pull battery door tab located on the base of the hearing aid.



Remove tab on new battery to activate. Open door, insert a fresh 312 battery with the positive '+' side facing up and close the door to turn on the hearing aid.

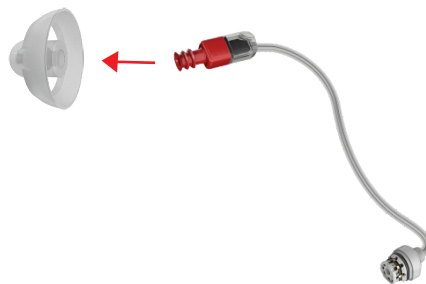
## GETTING TO KNOW YOUR SONTRO® OTC HEARING AIDS



NOTE: Battery door is on/off switch

## CHANGING THE EAR DOME

Open ear domes come installed on your hearing aids. If an ear dome feels too loose or too tight in your ear canal, remove the dome by pulling it from the receiver and then attach a larger or smaller ear dome.



## CHANGING THE RECEIVER SIZE

If the receiver does not lie flat against the side of your head (see next page), you may need a larger or smaller size. Please use the Receiver Measurement Tool.

## RECEIVER PLACEMENT

Left Ear Receiver is **Blue**  
Right Ear Receiver is **Red**

1. Take each hearing aid and hang it over the corresponding Left and Right ear, so that the body of the hearing aid is behind each ear.



2. Hold the receiver where it bends and gently place/push the ear dome into the ear canal. Push the ear dome far enough into the ear canal so that the receiver lies flush with your head.

3. To remove the hearing aid, hold the receiver where it bends and remove the ear dome from the ear canal.

## CUSTOMIZE

You can further customize how your hearing aid sounds by using the otoTune® app or by using the volume button on the Sontro® OTC Hearing Aid.

1. A short press (1 second) of the top or bottom button will change the volume up or down.

2. A long press (3 seconds) of the top or bottom button will allow you to cycle through the Sound Modes of the Sontro Hearing Aid.

3. A very long press (7seconds) of the top button will put the Sontro Hearing Aid in wireless pairing mode.

4. A very long press (7seconds) of the bottom button will clear any previous wireless connections on that Sontro Hearing Aid.

