

Fat Quarter Club: September 2022 - Napkins



BERNINA
OF NAPERVILLE ●

Supplies Needed

Fat Quarter of the Month Kit for
September 2022 [BUY NOW](#)

- [Terrial Magic](#)
- [Isacord #0672](#)
- BERNINA [#20D](#), [#20D](#) and/or [#20](#) depending on machine capabilities
- [Wing Needle](#) or a size [100 Top Stitch Needle](#)
- Rotary Cutter Mat and Ruler
- [Perfect Scissors](#)
- [Hot Ruler](#)
- [Smart U from Laurastar](#)



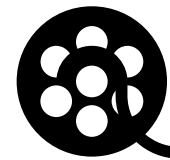
BERNINA
OF NAPERVILLE ●

Watch the YouTube Video

Before you cut or start sewing, gently starch with Terial Magic

After the fabric dries, press with steam and cut the solid-like fabric to the 14" square size

You do not need to starch the lining (essex linen)



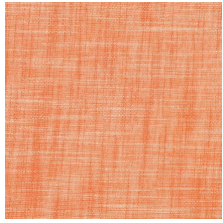
Fat Quarter Club SEPTEMBER
2022: NAPKINS



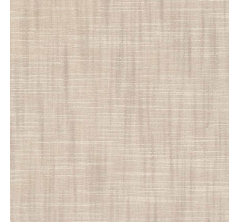
Cutting Instructions

- (2) 14" squares from Manchester Beige and Mango
- (2) 16 ½" squares from Essex Linen

ADDITIONAL FABRIC AVAILABLE:



Manchester:
Marmalade



Manchester:
Taupe



Around the
Bend in Essex
Linen: Oyster



Around the
Bend in Essex
Linen: Lingerie



Around the Bend
in Essex Linen:
Champaign



Around the Bend
in Essex Linen:
Peach



BERNINA
OF NAPERVILLE ●

Machine Set-up

- On the BERNINA 790 and 880 PLUS (or non-PLUS) machines, the stitch is the pinstitch #720
- You may also want to try the single blanket stitch if you do not have the #720 stitch

Stitch width 2.3

Stitch length 3.8

- Insert Wing needle and choose it from the security program.
- Be sure to select the 9mm plate (or 5.5mm)

Use Foot #20 open toe embroidery.
Choose from #20C, #20D or #20 regular depending on your machine's capabilities





FINISHED!

- Watch past videos from the Fat quarter club or sign up for future [Fat Quarter Club projects here](#)