

# Anita's Arrowhead



**BERNINA**  
**OF NAPERVILLE** ●

[www.berninaofnaperville.com](http://www.berninaofnaperville.com)

# Anita's Arrowhead

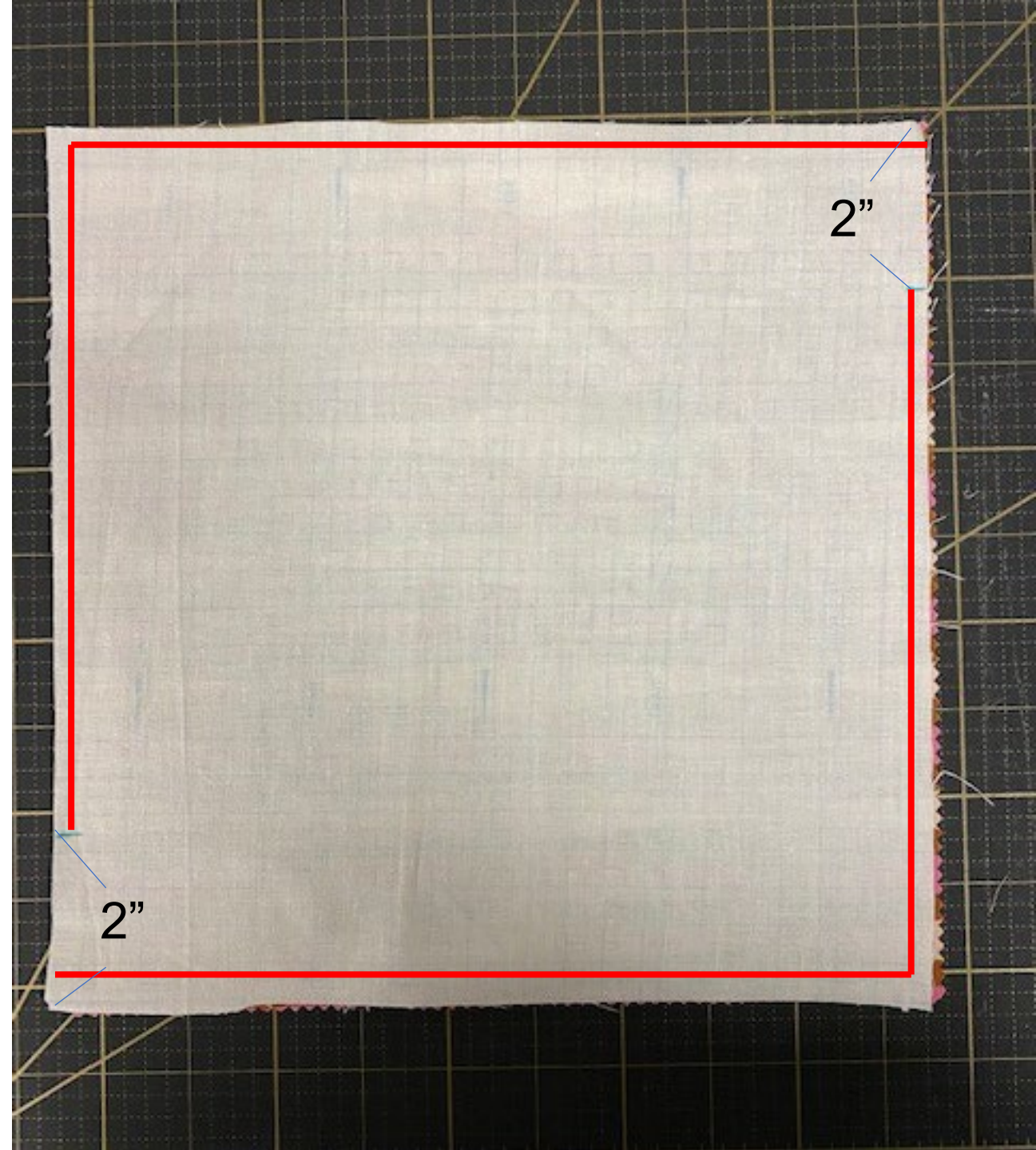
**BERNINA**  
**NAPERVILLE**

- Alteration: Our blocks were made with a 10" block from a precut collection. The pattern we used calls for an 8" block.
- Fabric
  - 20 – 10" squares of print or dark fabric
  - 20 – 10" squares of solid, or light fabric (can be all the same fabric, or a mix)
  - ½ Yard for inner border
  - 2 Yards for outer border
- Rotary Cutter and mat
- 12 1/2" square ruler
- Thread
- BERNINA Sewing Machine (we Used B 790 PLUS with #97 ¼" foot)
- Heat Vanishing pen



# Anita's Arrow Head

- Sandwich two 10" squares right sides together
- 2" from the top right corner, make a line using a heat vanishing pen
- 2" from the lower left corner, make a line using a heat vanishing pen
- Use a  $\frac{1}{4}$ " seam allowance
- Sew from the marked line around one corner to the edge of the side (see Diagram to the right)



# Anita's Arrow Head

- TIP: To avoid drawing a line on each block set
- On the BERNINA 4, 5, and 7 Series the 2" measurement is exactly at the intersection where the stainless freearm bed meets the slide on table to the needle.



# Anita's Arrow Head

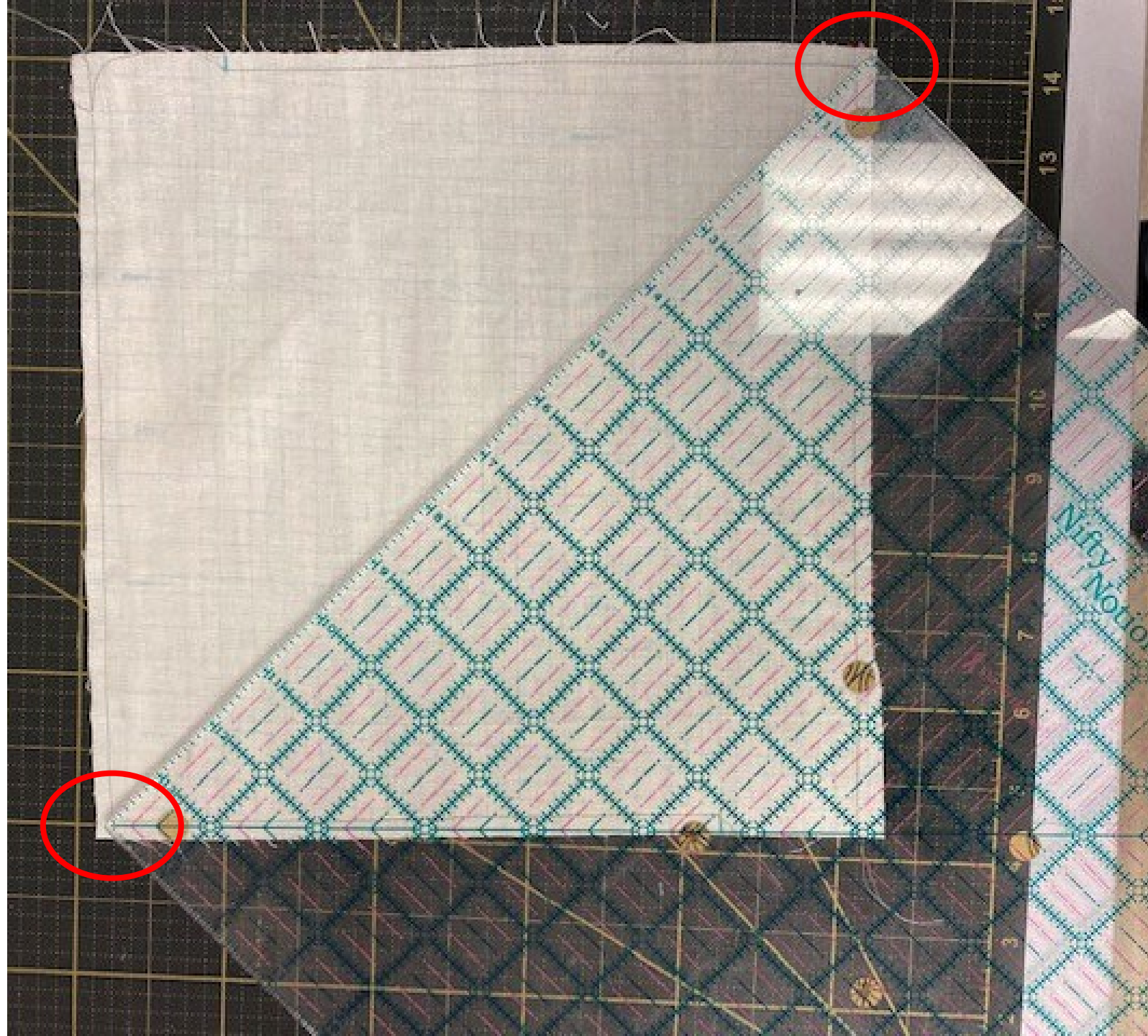
- TIP: To avoid drawing a line on each block set
- On the BERNINA 2 and 3 Series, this measurement needs to be marked with removable tape.





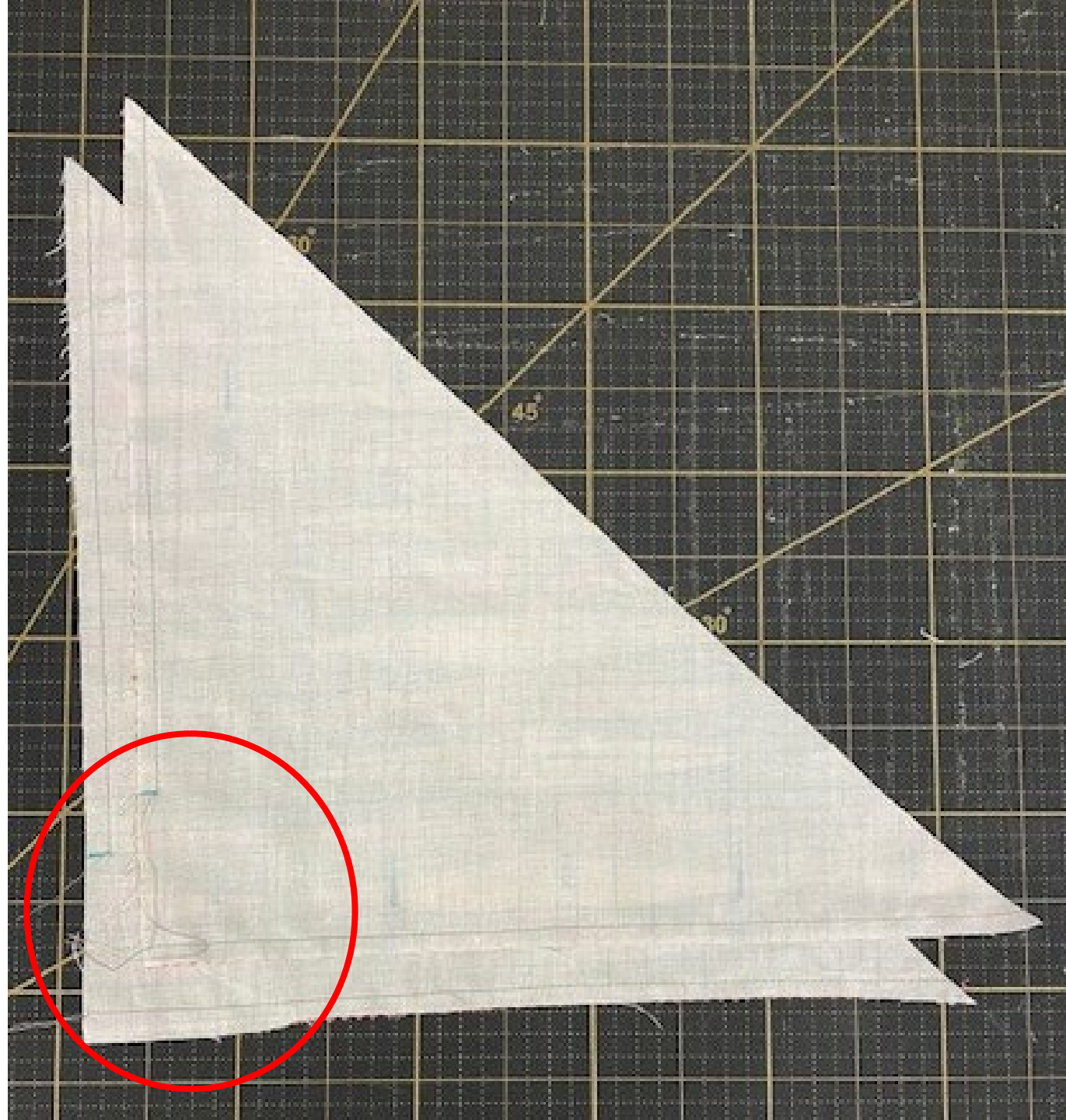
# Anita's Arrow Head

- After sewing, cut a diagonal line from the corner you stitched around to the corner you stitched around.
- **IMPORTANT:** do not cut diagonally on the ends with an opening. (Ask me how I know) 😊



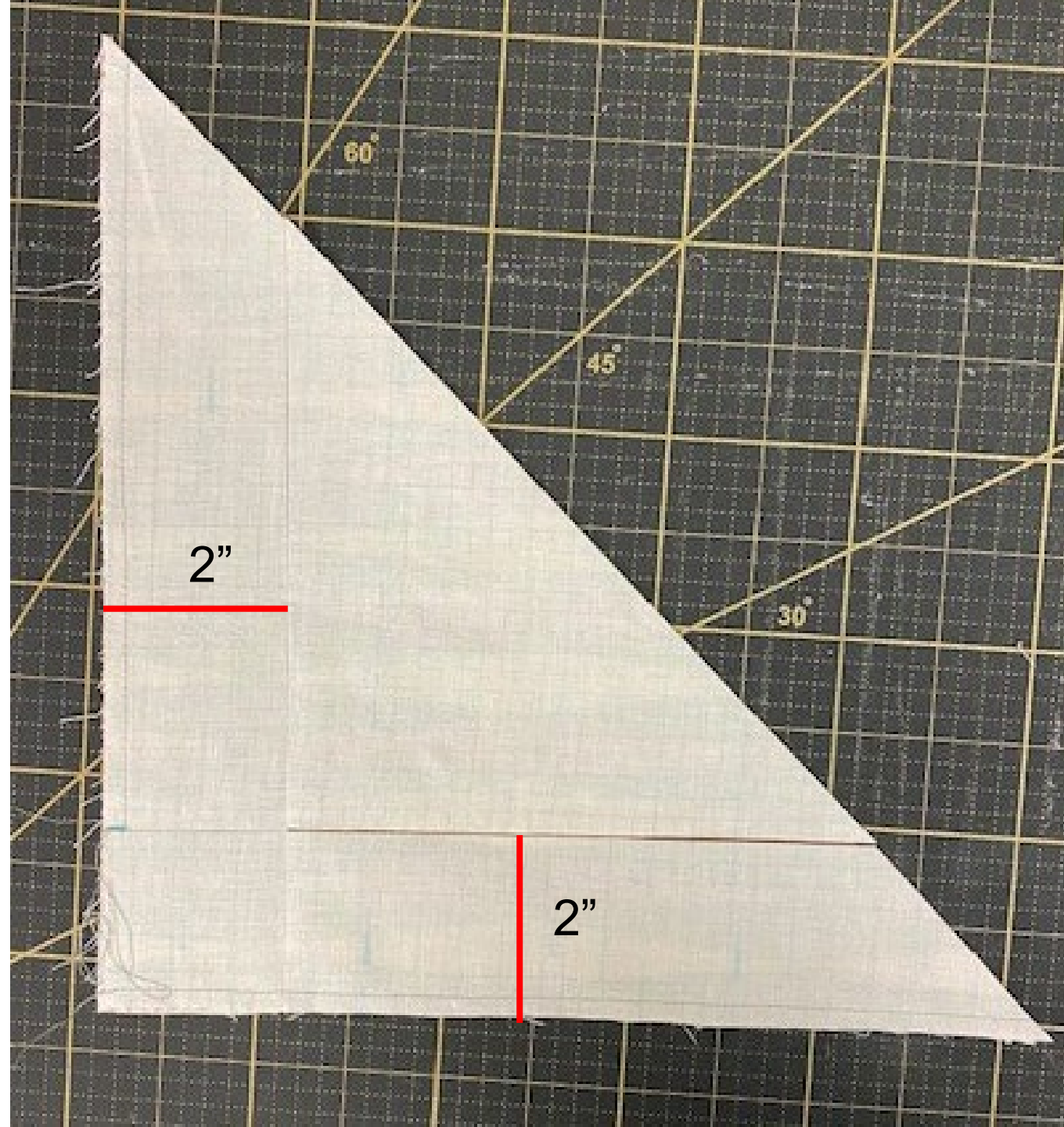
# Anita's Arrow Head

- Very carefully and precisely, line up the two triangles exactly on top of each other.
  - That means openings on top of openings



# Anita's Arrow Head

- From the edge of each sewn seam, cut 2 Inch strips



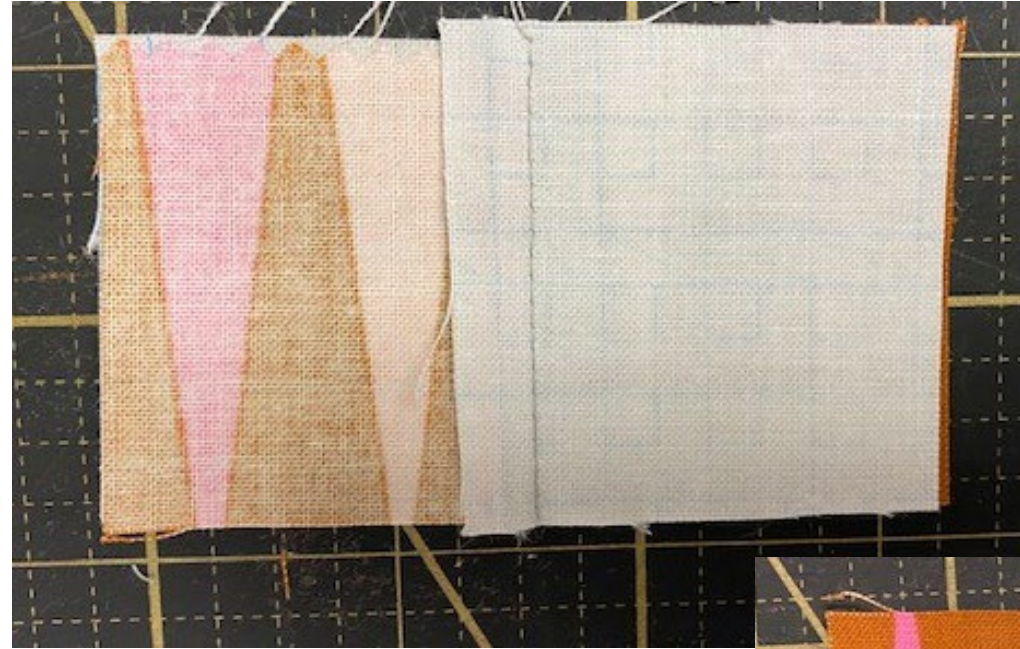


# Anita's Arrow Head

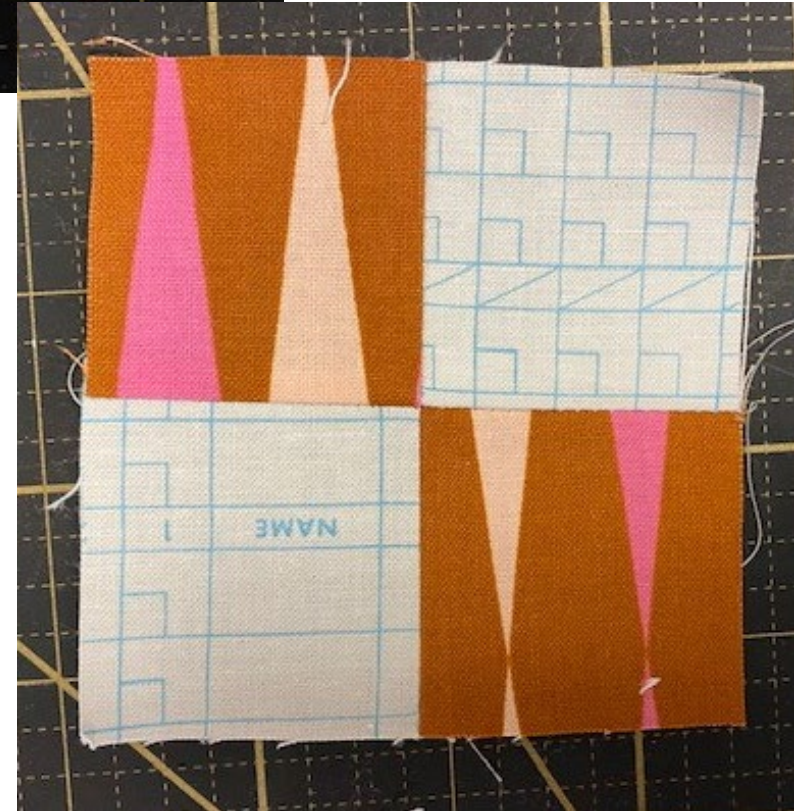
- You will have 8 pieces
  - 2 arrow points top
  - 2 arrow points bottom
  - 2 setting triangles light
  - 2 setting triangles dark
  - 2 inside square pairs
- Press to the darkside



# Anita's Arrow Head



- Sew the center squares together
  - Snuggle butt the seams so that they rest nicely together
- You now have the center 4-Patch



# Anita's Arrow Head

- Arrange the Blocks together
- Alternating light and dark





# Anita's Arrow Head

- Sew the center 4-Patch to the arrow points
- Press to the 4-Patch



# Anita's Arrow Head

- Sew the setting triangles into place
- Line up the flat edges, keeping them even.
- Please do not worry that the corners are not lining up. We will be trimming the block in just a moment.





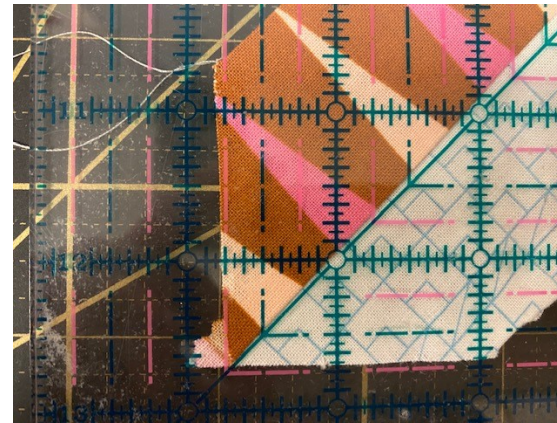
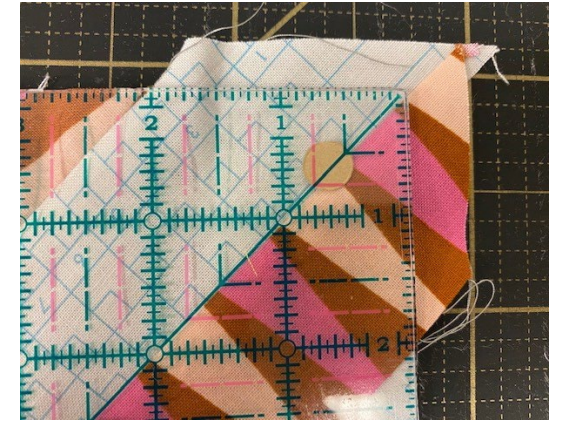
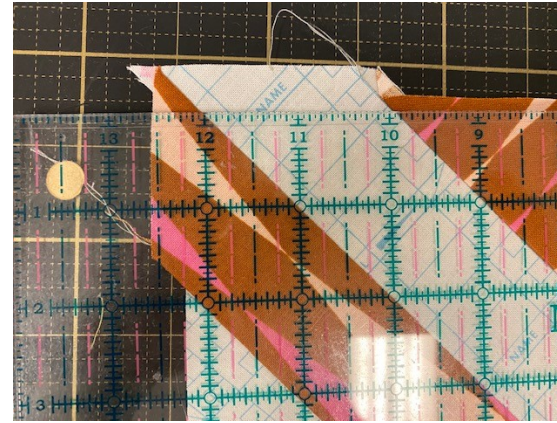
# Anita's Arrow Head

- Snuggle butt the center seams together
- Pin if necessary
- Do not worry about the corners



# Anita's Arrow Head

- Square up the block by trimming the extra bits on the corners.
- Blocks need to be squared up to 12"
- This means that they will finish at 11 1/2" once they are sewn into the quilt top





# Anita's Arrow Head

- Make 20 blocks
- Sew 5 rows of 4 blocks
- Sew rows together
- Add the inner border
  - Cut 8-2 ½" strips, width of fabric
  - Sew together in pairs
  - Trim first pair to 46 ½"
  - Trim the other pair to 62"
- Add Outer Border
  - Cut 4-5" strips length of fabric
  - Sew together in pairs
  - Trim first pair to 50 ½"
  - Trim second pair to 71"
- **FINISHED QUILT TOP = 59 ½" X 70 ½"**

