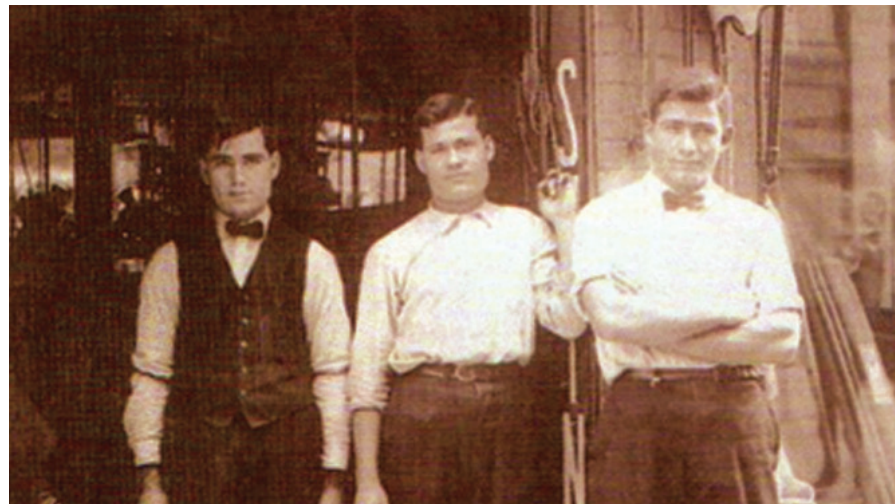


Angelus[®] BRAND

LEATHER PAINT - LEATHER & SUEDE DYE - CLEANERS - LEATHER CARE - ACCESSORIES - AND MORE



SINCE 1907 | MADE IN USA | PRODUCT CATALOG 2021



ABOUT US

Angelus Shoe Polish was not even a dream when the young Greek immigrant, Paul T. Angelos, arrived at Ellis Island. Making his way to Chicago, Paul shined shoes and saved enough money to go to Los Angeles. After arriving in Los Angeles penniless, he secured a job at a large shine stand. Paul saved enough money to open his own shine stand. Through hard work and long hours, he was able to send money for his brothers, George and Louie, to join him. Soon there were 14 employees and three shine stands; Sixth Street – opposite the Hayward Grill, Fifth Street – opposite the Alexandria Hotel, and one next door to The Pantages Theater. After being crowned, “King of the Bootblacks”, Paul was able to make the return trip to Greece to marry his sweetheart. Many years later, Paul would tell his grandchildren what an experience it was to return to Greece on the Ocean Liner, Mauritania First Class, which was the same ship that brought him Steerage to American years before. How fortunate his family was to be able to come to this country where freedom, success, and happiness were possible through honesty and hard work.

Arriving back in Los Angeles with his bride, the decision was made to start making a few items to use on their shine stands. Soon, other bootblacks started wondering what the Angelos boys were using on their shine stands and started asking where they could buy some.

The demand for Angelus products started to grow until the poor kitchen stove could not keep up with demand. A small shop was then opened on Winston Street. The brothers, cousins, and brother-in-laws, all split time between their shine stands and their new manufacturing plant.

It was not long before the plant demanded full time attention. The decision was made to sell the shine stands and devote all their energies into making shoe polish. Some of the family worked in the plant while others took to the road where they covered the country with their sample cases.

When necessary, they rolled up their shirt sleeves and worked in the repair shops or shined shoes to demonstrate the quality of the Angelus products. In 1917, the Angelus trademark was registered. In 1924, a new five-story plant was built on Maple Avenue in Los Angeles. In the early 1930's, Paul's son George joined the family business on a full time basis. Demand continued to grow for the Angelus products throughout the 1930's and 1940's.

At the end of World War II in 1947, with most of the principles of the business reaching well into retirement age, a decision was made to sell the business. The Angelos “boys” retained the building so the new owner of Angelus, moved to the former Santa Cola bottling plant in Culver City California. Many changes were made to Angelus, sadly none for the good. The new owners felt that more money should be made and why use the expensive ingredients in the shoe polish. As a result, a good business with a reputation for unmatched quality and service was brought down to almost nothing.

In 1953, Paul and his son George bought back Angelus Shoe Polish. They went to what they knew best – honesty, quality, and hard work. Any merchandise that was defective was taken back and refunds or new product delivered. Sid Solomon, their salesman would question Paul, “You cannot take back this much merchandise, especially products that you did not even make!” Paul's reply, “It has our name on it and we will make it good. It matters little who actually made it!” As a young boy, my first job at Angelus was working beside my father and grandfather washing out hundreds of thousands of bottles of returned merchandise. We were the only plant employees. Finally after mastering the art of bottle scrubbing, I graduated to packing and mixing.

The only equipment we had in those days was the cooling tunnel for paste polish, one old noisy cream mixer, a few tanks, and wooden paddles for mixing. Filling the product was done with a hose and funnel. Capping was done by blistered hands.

Slowly but surely the demand for Angelus grew again. Soon additional machines were bought and employees hired. Angelus remained in Culver City for 59+ years before moving to a larger facility in Santa Fe Springs, California.

Today, as the last original shareholder of Angelus Shoe Polish, I am as proud of our product and reputation as my grandfather was the first time he touched his fingers to a can of polish, shined a pair of shoes, and was flipped a dime for a job well done. It is my promise to all my family that have been involved at Angelus Since 1907, that we will not compromise the basic principles on which our company was founded: **Honesty, Hard Work, Quality Products, and Great Service.**

PAUL G. ANGELUS,
President



ANGELUS PRIME NEATSFOOT OIL COMPOUND #100

A Blend of 100% Pure Neatsfoot Oil with the finest grade oils. Recognized all over the world as one the finest dressings for leather saddles, boots, holsters, gloves, and sports equipment. Great for use on smooth leathers exposed to rugged outdoor use. When properly applied, will soften, lubricate, water-proof, preserve, add to longer life, and help prevent drying and cracking of leather. Neatsfoot Oil, like many oils, may tend to darken some leather and is not intended for use on suede.

#100 Available in 8oz Retail Size, Pint, Quart, Gallon, 5 Gallon Pail, 55 Gallon Drum



ANGELUS LEATHER OILS #101 & #102

Both are fine oils used for production work on holsters, saddles, tack, and sporting equipment. Used where consistent color and viscosity are absolutely necessary. No. 101 is a lighter viscosity than #100. #102 is lighter yet. Lighter oils allow deeper penetration on leather.

#101 & #102 Available in Gallon, 5 Gallon Pail, 55 Gallon Drum



ANGELUS 100% PURE NEATSFOOT #105

A natural material preserver and water repellent for leather. Ideal for softening, dressing, preserving, water-proofing, and restoring life to leather items. Especially beneficial to leather subjected to rugged use and exposure. Great for use on leather saddles, harnesses, boots, baseball gloves, and other sport and hunting equipment. Not intended for use on nappy leathers. Meets U.S. Government Specs.

#105 Available in 8oz Retail Size, Pint, Quart, Gallon, 5 Gallon Pail, 55 Gallon Drum



ANGELUS LUSTRE CREAM #200

Lustre cream is one of our most popular and versatile products. Made from a blend of the finest waxes, oils, soaps, and preservatives. Used in restoring, softening, cleaning, preserving, and polishing all smooth leathers. Ideal for use on purses, belts, luggage, shoes, and tack. Excellent "one product" for cleaning, conditioning and polishing. Simply apply liberally to article, allow to dry, buff. **That's it!!**

#200 Available in 4oz Retail Size, Pint, Quart, Gallon, 5 Gallon Pail, 55 Gallon Drum. Colors - Black, Brown, Tan, Army Tan, English Tan, Cordovan, Navy Blue, Red, Kelly Green, & Neutral. **Make your own color by adding Angelus Dye to Neutral Cream!!**



ANGELUS LEATHER BALM #210

A blend of Carnauba wax, natural oils, and cleaners. The same basic time tested formula created in 1907. Ideal for all smooth leathers. Apply with a clean cloth, allow to dry, polish to a mellow gloss. Leather Balm with help keep leather soft and supple. Will not become excessively slick making it a great option for use on upholstery and saddlery.

#210 Available in 4oz Retail size, Quart, and Gallon



ANGELUS EXOTIC SKIN CREAM & CONDITIONER #212

Safely cleans, preserves, & conditions all reptile, exotic, lizard, ostrich, snake, alligator, and eel. Ideal for naked, smooth, & distressed leather.

#212 Available in 4oz, 8oz, Pint, Quart, Gallon.



ANGELUS REPTILE AND EXOTIC CONDITIONER #216

NEW ITEM!! A deep penetrating leather cleaner/conditioner. Ideal for use on reptile and exotic skins. Lighter in viscosity to allow for penetration on even the toughest skins/hides. Excellent for distressed leathers too. Maintains the supple feel without a greasy feeling.

#216 Available in 8oz Retail size, Quart, and Gallon



ANGELUS LEATHER CONDITIONER #215

A blend of the finest waxes, oils, soaps, and preservatives that can be used on smooth leather. Leather Conditioner penetrates into leather restoring natural oils while cleaning. A wax film is left on the article and can be buffed to a beautiful satin finish. When properly applied, Leather Conditioner will clean, soften, preserve, polish, prevent cracking, and restore natural beauty to smooth leather articles. Like #210 Leather Balm, will not become excessively slick making it ideal for upholstery, furniture, saddles, and handbags. Contains NO solvents.

#215 Available in 8oz Retail size, Quart, and Gallon





ANGELUS LEATHER AND SADDLE SOAP TUBS #220

Ideal for cleaning, polishing, preserving, and lubricating all fine smooth leathers. Help keep leather flexible by restoring natural oils while cleaning. Will not strip leather. Follow with your favorite Angelus Leather conditioner and buff to a nice glow. Non sticky, nonslick formula.

#220 Available in 3oz, 8oz, 16oz, and 7 pound tubs.



LIQUID SADDLE SOAP SPRAY #221

Unique spray soap is ideal for cleaning tack, furniture, and other large area articles. Requires little or no rinsing. Follow up with your favorite Angelus Conditioner as needed.

#221 Available in 8oz pump spray and Gallon



WHITE ACE SUPREME SHOE WHITE #302

Manufactured for all smooth white leather articles. When properly applied, White Ace will clean, polish, and preserve leather. When dry, White Ace is rub-off resistant. NON-TOXIC - SAFE FOR USE ON BABY SHOES. A long time staple in the nursing and golf industries as well.

#302 Available in 3oz sponge applicator bottle, Quart, and Gallon



ANGELUS INSTANT SHINE #310

Angelus Instant Shine is a one step self-shining liquid. When properly applied, it will restore color, cover scuffs, and dry to a high gloss finish. Ideal for use on shoes, boots, holsters, belts, etc. For use on smooth leathers only. NOT intended for nappy leathers. NON-TOXIC and SAFE for children's shoes.

#310 Available in 3oz sponge applicator bottle, Quart, and Gallon.



ANGELUS PERFECT STAIN SHOE WAX #400

Angelus still uses the original formula created in 1907 by our founders. Angelus Wax comes in a convenient 3 oz snap open can. A blend of pure carnauba wax, beeswax, and the finest grade of other waxes and oils. Angelus Wax does more than just polish. It cleans, preserves, water-proofs, and restores a richer color to faded footwear and leather gear. Carnauba wax, a well-established product for the auto and furniture polish industry, has been recognized for years as an excellent preserver for leather.

#400 - Available in 50gr, 75gr, 3oz snap open can, and 2.2 pound (kilo) cans.
Colors - Black, Brown, Lt. Brown, Dark Brown, Tan, Cordovan, Grey, Mahogany, Mid-Tan, Navy Blue, Midnight Green, Neutral, Oxblood, Red, and White



ANGELUS PERFECT STAIN SHOE WAX #410

Same formula as #400, but now in a 50 gram metal tin with a screw-on lid. The all new screw-on lid ensures an air-tight seal that helps to prevent the wax from drying out.

The all new metal tin is perfect for traveling. With a net content of 60 ml, it falls within TSA regulations to have in your carry-on. The screw-on lid will help prevent the can from opening by accident.

#410 - Available in 50gr screw-top cans & in the Angelus Shoe Shine Kit #411 (see page 21).
Colors - Black, Brown, Lt. Brown, Dark Brown, Tan, Cordovan, Grey, Mahogany, Mid-Tan, Navy Blue, Midnight Green, Neutral, Oxblood, Red, and White



ROLL CALL MILITARY GRADE SHOE WAX POLISH #455

Water repellent, polishes, and preserves all smooth leathers, restores color. Made in the U.S.A.



ANGELUS WAX EMULSION #490

Liquid wax used primarily in manufacturing to give a nice smooth feel. May be applied to back of articles to provide some repellency.

#490 Available in 4oz, Quart, and Gallon



ANGELUS LEATHER DYE #500

Angelus Dye is the most heavily pigmented dye on the market. Do not waste time with weak dyes. Angelus Dyes can also be diluted for desired color results. A permanent liquid dye used for many applications (like gourds, stone, woodworking, etc...) but designed for use on smooth leather articles. Guaranteed to penetrate leather and form a lasting color which will not peel, crack, or wash off. Excellent for use in manufacturing or re-coloring saddles, tack, shoes, belts, purses, wood, etc. Also used by Gourd Artists.

#500 Available in 3oz, Pint, Quart, Gallon, 5 Gallon Pails, and 55 Gallon drums.
 Colors Available: Jet Black, Neutral, Army Tan, Mahogany, Brown, Chocolate, Cordovan, Dark Brown, English Tan, Light Brown, Light Brown A, Medium Brown, Orange, Sun-tan, Tan, Blue, Light Blue, Navy Blue, Turquoise, Blue Jean, Purple, Green, Kelly Green, Burgundy, Oxblood, Red, Winetone, Gold, Yellow, Bismark Brown, Brandy, Brick, Honey, Russet, Spice, Coffee, Jade, Rose, Light Rose.



ANGELUS PRO LEATHER DYE #505

For Professional Use Only

Angelus Pro Series Leather Dye is for professional use only. Mostly used for dip-dyeing leather, the heavier pigment ensures long-lasting color. Contains monochlorotoluene.

#505 Available in 3oz, Pint, Quart, Gallon, 5 Gallon Pails, and 55 Gallon Drums.
 Colors Available: Black, Brown



ANGELUS 507 SERIES LEATHER DYE #507

For Professional Use Only

Angelus 507 Series Leather Dye is for professional use only. Mostly used for dip-dyeing leather, the heavier pigment ensures long-lasting color. Contains monochlorotoluene.

#507 Available in 3oz, Pint, Quart, Gallon, 5 Gallon Pails, and 55 Gallon Drums.
 Colors Available: Black



ANGELUS SUEDE DYE AND DRESSING #520

Liquid Suede Dye will color, restore, and dress all nappy and suede leathers. Many colors of suede will work well on smooth leathers but NOT the reverse. Do not use #500 on suede. It may ruin the nap.

#520 Available in 3oz, Pint, Quart, Gallon, 5 Gallon Pails, and 55 Gallon drums
 Colors - Black, Lt. Brown, Brown, Dark Brown, Navy, Neutral, Tan, Rust, Chamois, Beige, Green, Kelly Green, Blue, Lt Blue, Lilac, Purple, Red, Dark Red, Winetone, Pink, Lt Grey, Grey, Dark Grey, & Yellow.



SOLE AND HEEL POLISH #540

Angelus Sole and Heel Polish is an edge finish for shoes and boots that dries to a gloss. No buffing required. Covers scrapes and marks accumulated on a sole or heel. Not intended for use on wood clogs. When dry, will not rub off.

#540 Available in 3oz, Pint, Quart, & Gallon
 Colors - Black and Brown



ROLL CALL MILITARY GRADE EDGE DRESSING #541

Renews original finish on heels and soles. Especially formulated for high gloss military type inspections. Helps to protect and water-proof as well. California VOC Compliant.

#541 Available in convenient 3.6 fl. oz. bottle with applicator cap, Pint, Quart, & Gallon
 Color - Black and coming soon, Clear/Neutral



ACRYLIC SOLE AND HEEL ENAMEL #544

Higher gloss than #540. Excellent for edging belts, purses, shoes, key rings, and any finished or un-finished leather items. Also used to color the "back side" of purses, belts, etc. Will not peel or crack. No buffing required.

#544 Available in 3oz, Quart, & Gallon
 Colors - Black and Brown



SHINE AND DYE #530

DYE IT, then SHINE IT... Just apply, allow to dry, buff to a shine. That's all there is to it!! Angelus Shine and Dye is a combination of Angelus dyes and waxes creating a one step product for smooth leather items. Shine and Dye is excellent for covering scuffs, scrapes, faded goods, and any smooth leather in need of restoration. Will not crack or peel on leather.

#530 Available in 3oz, Pint, Quart, & Gallon
 Colors - Black, Brown, Tan, Cordovan, Navy Blue, & Red.

WE'VE GOT YOU COVERED FROM START TO FINISH.



ANGELUS ACRYLIC FINISHER #600

Original finisher. Semi to high gloss top finish for use on all smooth leathers. Water resistant. Will not rub off, crack, peel, or streak. Great when used over different finishes where a uniform finish is desired. Flexible enough for belts, shoes, handbags, saddlery/tack, and upholstery



ANGELUS SATIN ACRYLIC FINISHER #605

A long time staple for manufacturers. Quick drying. Mellow finish than the #600. #605 can be buffed to achieve additional luster. Similar uses as the #600



ANGELUS ACRYLIC FINISHER HIGH GLOSS #610

Similar uses as #600 but with a higher gloss. Better to use on more rigid items. The higher the gloss, the harder the finish. May crack/fracture on soft surfaces.



ANGELUS ACRYLIC FINISHER SATIN HIGH GLOSS #615

Similar uses as #610 but with a softer gloss. Better to use on more rigid items. This is a harder finish. May crack/fracture on soft surfaces.



ANGELUS ACRYLIC FINISHER - MATTE #620

Same as #600 & #605 but with a softer appearance. Can be used on all smooth leathers.



ANGELUS FLAT 4-COAT #901

The Angelus Flat 4-Coat is formulated to be the most durable, flexible, and scratch resistant clear coat on the market. This urethane based top coat can withstand most scratches & scrapes to help keep your project looking it's best! When applied properly, Flat 4-Coat will leave an extremely dull finish with almost no shine at all.

#901 Available in 1oz & 4oz



ANGELUS MATTE 4-COAT #902

The Angelus Matte 4-Coat is formulated to be the most durable, flexible, and scratch resistant clear coat on the market. This urethane based top coat can withstand most scratches & scrapes to help keep your project looking it's best!

#902 Available in 1oz & 4oz



ANGELUS SATIN 4-COAT #903

The Angelus Satin 4-Coat is formulated to be the most durable, flexible, and scratch resistant clear coat on the market. This urethane based top coat can withstand most scratches & scrapes to help keep your project looking it's best! When applied properly, Satin 4-Coat will leave a nice "factory" finish. Not too glossy, and not too matte!

#903 Available in 1oz & 4oz



ANGELUS HIGH GLOSS 4-COAT #904

The Angelus High Gloss 4-Coat is formulated to be the most durable, flexible, and scratch resistant clear coat on the market. This urethane based top coat can withstand most scratches & scrapes to help keep your project looking it's best! When applied properly, High Gloss 4-Coat will leave an extremely glossy finish, close to the "patent leather" look!

#904 Available in 1oz & 4oz





ANGELUS LEATHER FINISH #650

Liquid finish for coloring and giving a gloss to leather all in one step. No buffing required. Excellent for use on leather edges, backs, and top surfaces. Ideal for production work on belts, saddles, harnesses, and police/military equipment.

#650 Available is 4oz, Pint, Quart, & Gallon Color - Black and Brown



EDGE LEATHER FINISH #660

Angelus Edge Leather Finish is a durable high gloss finish. No buffing required. Water-based for easy clean up. No fire danger. Ideal for edging belts, saddles, and holsters.

#660 Available in 4oz, Pint, Quart, & Gallon.
Colors - Black, Brown, Lt. Brown, Dark Brown, & White.



ACRYLIC ANTIQUE #700

While coloring leather, antique applies a protective finish that helps repel water and enables a top coat to be used. Ideal for tooled leathers. The depth of color on leather is determined by the amount of time the acrylic antique is left on the leather prior to wiping it off. Buff to a mellow glow or apply a top coat for a glossier finish. Water-based for easy clean up.

#700 Available in 4oz, Pint, Quart, & Gallon.
Colors - Black, Brown, Lt. Brown, Medium Brown, Dark Brown, Bismark Brown, Mahogany, Cordovan, Tan, & Neutral.



130+ PAINT COLORS.
FLEXIBLE. DURABLE. MIXABLE.



ANGELUS ACRYLIC LEATHER PAINT #720

Angelus Acrylic Leather Paint is the leader in custom leather colorings. Brilliant color. Over 80 standard and 12 Neons (see #725). Ideal for painting boots, jackets, athletic shoes, purses, and more! When properly applied, will not crack, peel, fade, or rub off. Water based for easy clean up. Paints can be blended together for countless custom colors. Can be applied with a fine brush, sponge, airbrush (some thinning may be required depending on the color), or whatever! When painting "some" areas of an article only, a finisher is recommended to achieve a uniform finish.

#720 Available in 1oz (w/ brush cap), 4oz, Pint, Quart, & Gallon.



ANGELUS WALK ON RED/BLACK #720

Specially formulated paint to refinish hard leather soles of some of the more popular shoes.

Only available in 2 oz.
Colors Available: Black, Red



ANGELUS NEON LEATHER PAINT #725

Angelus Acrylic Leather Paint is the leader in custom leather colorings. Brilliant color. Over 80 standard and 12 Neons (see #725). Ideal for painting boots, jackets, athletic shoes, purses, and more! When properly applied, will not crack, peel, fade, or rub off. Water based for easy clean up. Paints can be blended together for countless custom colors. Can be applied with a fine brush, sponge, airbrush (some thinning may be required depending on the color), or whatever! When painting "some" areas of an article only, a finisher is recommended to achieve a uniform finish.

#725 Available in 1oz (with brush cap), 4oz, Pint, Quart, & Gallon.
Colors Available: Rio Red, Tahitian Pink, Jamaican Joy, Parisian Pink, Paradise Purple, Amazon Green, Popsicle Green, Tropic Sun Yellow, Sunset Yellow, Flaming Orange, Lava Orange, Bahama Blue.



ANGELUS COLLECTOR EDITION #727

Acrylic Leather Paints that are perfectly matched to some of the most popular sneakers. These unique colors are widely used to restore cracked, faded, or worn paint from classic sneakers.

#727 Available in 1oz.
Colors Available: Aqua 8, Blaze 8, White Cement/Grey 4, Volt, Emerald 5, Infrared, Maize, Mid-Navy 8, Military Blue, Royal 5, True Blue, Varsity, Miami Vice, Melo 2, DTRT Yellow, Yeezy, Maroon, Grape 5, French Blue, Gamma Blue, Joker Green, Tour Yellow, Thunder Yellow, Infrared 2014, Shattered Orange, Uni Blue, Shadow Grey.



ANGELUS GLITTERLITES PAINT #730

Finally, a glitter application that doesn't crack or require glue to start. Just apply layers as if using our acrylic paint and let dry and a glittery finish will be had. Stir well before applying, base coat of similar color paint is advised.

#730 Available in 1oz.
Colors Available: White Sugar, Desert Gold, Penny Copper, Silver Spark, Gunmetal, Emerald, Limelite, Sky Blue, Starlite Blue, Lavender Lace, Princess Purple, Candy Pink, Ruby Red, Razzberry, Kelly Green, Tuxedo Black, Orange Orange, Ice Ice Blue, Baby Blues



ANGELUS METALLIC LEATHER PAINT #732

Flexible Metallic paints that really shine! The small metallic flakes in the paint create a unique sparkling effect. The metallic paint gives the surface dimension and catches a lot of attention! Formerly part of the Angelus #720 series, these Angelus Metallic Paints now make up their own series: #723.

#723 Available in 1oz, 4oz, Pint, Quart, Gallon.
Colors Available: Gold, Copper, Bronze, Pewter, Silver.



ANGELUS PEARLESCENT LEATHER PAINT #733

The Pearlescent pigments in these paints sparkle as they refract light to show a deep color that can vary depending on the way they're observed. These paints can make for interesting effects on curved or even moving surfaces.

#733 Available in 1oz, 4oz.
Colors Available: Riot Red, Pacific Blue, Prince Purple, Sterling Silver, 18K Gold, Rose Gold, & Emerald Green.



PLASTIC, FABRICS, AIRBRUSH...
ADDITIVES FOR EVERY APPLICATION.



2-THIN #720

Angelus 2-Thin is perfect when you need to thin out Angelus Leather Acrylic Leather Paint. It keeps your shoe paint from clumping on a mesh surface, and it's great when you're using airbrush for your customization.

For airbrush applications, we suggest using a 1 part 2-thin to 4 parts paint ratio (1:4).

#720 Available in 1oz, 4oz, Pint, Quart, & Gallon.



DULLER #722

Angelus Duller is mixed with Angelus Paint in order to reduce the amount of shine in the paint. Perfect item if you want the "Matte" or "Flat" look. We recommend mixing no more than 5-8% duller into your paint solution.

Duller also works well when mixed with Angelus Acrylic Finisher's.

#722 Available in 1oz, 4oz, Pint, Quart, & Gallon.



2-SOFT #722-01-000SOFT

2-Soft #722-01-000SOFT

An absolute must-have when working on fabrics such as the sock-liner of shoes and other soft fabrics. When heat-set properly, this Fabric Medium will help keep your fabrics nice and soft after being painted.

Warning: This product contains Formaldehyde, a chemical known to the State of California to cause cancer. Use with proper ventilation.

#722 2-Soft Available in 1oz & 4oz.



2-HARD #722-01-000HARD

Angelus 2-Hard is the perfect additive when working on hard, non-flexible services. 2-Hard helps to promote adhesion onto plastics while hardening the paint for added durability.

Ideal for painting hard plastics, glass, and other rigid surfaces. Not for use on surfaces that may be bent or flexed often.

#722 2-Hard Available in 1oz & 4oz.



ANGELUS DRY CLEANER & SPOT REMOVER #800

For Professional Use Only

Professional grade spot remover for leather, wool, vinyl, clothing, etc. Ideal for preparing a leather surface for re-dyeing and finishing. Also excellent for removing dirt and grease from carpets and upholstery. Use care on synthetics.

#800 Available in 3oz, Pint, Quart, & Gallon



ANGELUS DRY CLEANER & SPOT REMOVER #802

A variation of our #800 Dry Cleaner sold for many decades to our manufacturing customers. Now available for shop use. Professional grade solvent preferred by some who require a longer drying/working time.

#802 Available in 4oz, Quart, & Gallon



ANGELUS SHOE AND HANDBAG SHAMPOO #810

Excellent universal cleaner. Cleans leather, vinyl, canvas, wool, suedes, plastics, upholstery, and rugs. Will not water-spot. Water-based product safe for home use. Mild enough to clean delicate materials and strong enough to clean trapped dirt and grime on carpets.

#810 Available in 3oz, Quart, & Gallon



ANGELUS EASY GEL CLEANER #811

Easy, Easy, Easy!!! No drip applicator top. No rinsing! Simply depress applicator top, apply to article, rub in a light motion, wipe dry! Ideal for quick touch ups anywhere! Perfect for athletic shoes. Gentle enough for daily use.

#811 Available in 3 oz applicator top bottle with overcap (toss in your gym bag, locker, car, etc), also available in Quart & Gallon sizes.



ANGELUS BLUE FOAM CLEANER #815

Economy based cleaner for leather, suede, nubuck, vinyl, straw, canvas, and most apparel materials. As with all cleaners, test on a small unseen area prior to overall use.

#815 Available in 8 oz, Pint, Quart, Gallon sizes.



ANGELUS ALL PURPOSE CLEANER #816

Liquid version of #817. Available in 4 oz, 8 oz, quart, and gallon.

#816 Available in 4oz, 8oz, Quart, and Gallon size



ANGELUS FOAM POWDER CLEANER #817

For Professional Use Only

Environmentally friendly, reduced packaging product. Simply add water and create your preferred strength multi-purpose cleaner.

#817 Available in 6oz power tub - enough to make 1 gallon. Also available in a ready to use 8oz. Pint, Quart & Gallon liquid



ANGELUS LEATHER PREPARER & DEGLAZER #820

All purpose cleaner and stripper for leather articles. Excellent for use in preparing leather for dyeing with Angelus Leather Dyes. Product can be use to de-glaze factory finishes from shoes, purses, holster, and saddles. Leather Preparer & Deglazer will tend to strip color from leather articles only and is NOT recommended for use on vinyl or plastic.

#820 Available in 4oz, Pint, Quart, & Gallon



ANGELUS LEATHER PREPARER & DEGLAZER #822

For Professional Use Only

All purpose cleaner and stripper for leather articles. An alternative to #820 sold for many years to our manufacturing customers. Now available for shop use.

#822 Available in Quarts & Gallons



ANGELUS EASY CLEANER FOR SUEDE AND LEATHER #840

A premium cleaner for suede, nubuck, vinyl, straw, canvas, and carpet. Will clean all leathers. One of our most popular, versatile cleaners. Test on an unseen area prior to overall use.

#840 Available in two retail sizes-4oz pump spray & 8oz plastic bottle. Also available in Quart & Gallon, or in a 3 piece kit (see page 21).



ANGELUS SILICONE WATER REPELLENT #850

Easy to use treatment to help make smooth leathers water resistant. When used properly, will aid in keeping your leather articles dry during the most severe rains. Apply and allow to dry completely before exposure.

#850 Available in a handy 4oz bottle with a dauber cap, Quart, & Gallon



ANGELUS INSTANT CLEAN #841

Companion package to Angelus Instant Shine #310 series. Great 3oz retail bottle with a scrub top. Mild formulation for consumer use. Great on leather, vinyl, rubber, canvas, and straw. Use care with the scrub top when using on suede. May damage nap. Test on a small area prior to overall use.

#841 Available in 3oz retail bottle



ANGELUS WATER & STAIN REPELLENT #851

5.5 ounce aerosol can. Invisible protective coating. Repels water and stains to keep leather, suede, Gore-Tex, and many fabrics clean and dry. Safe to use on "Dry Clean Only" fabrics. California Compliant.

#851 Available in 5.5 ounce aerosol can



ANGELUS FOAM-TEX #842

Gentle foaming cleaner that distributes foam directly out of the pump handle. Safely cleans suede, leather, nubuck, canvas, vinyl, plastic & more!

#841 Available in 5.7oz, Quart, & Gallon, or in a 3 piece kit (see page 21).



ANGELUS WATER & STAIN REPELLENT #851

Liquid, non-aerosol version. Invisible protective coating. Repels water and stains to keep leather, suede, Gore-Tex, and many fabrics clean and dry. Safe to use on "Dry Clean Only" fabrics.

#851 Available in 4oz pump spray bottle, Quart, & Gallon



ANGELUS BRUSH CLEANER #843

Quickly & effectively cleans acrylic paints from paintbrushes, airbrushes, & many other art tools. Leave bristles soft & supple. Use to soak air brush parts over night without the fear of causing damage.

#843 Available in 8 oz.



ANGELUS BOOT SPRAY #852

Provides a protective barrier against soil and moisture. Excellent on all sheepskin material. Ideal for Boots, Shoes, Jackets, Handbags and Suede.

#852 Available in 5.5 ounce aerosol can



ANGELUS ALL PURPOSE FOAM CLEANER #845

Aerosol foaming cleaner. Great for use on smooth leathers, oiled leather, suede, nubuck, and canvas. Use caution when using the scrub top. May damage nap. California compliant. Formerly Texture and Leather Cleaner.

#845 Available in 5.5 ounce aerosol can with scrub top



ANGELUS DESALTER (WATER & STAIN REMOVER) #853

Will remove most salt and water stains caused by ice, rain, snow, sweat, and salt. Will not injure leather articles. Test on a small unseen area prior to overall use.

#853 Available in 4oz, Quart, & Gallon



ANGELUS DYE REDUCER SOLVENT #861

Formulated to be used with Angelus Leather Dyes. Use for diluting, mixing colors, and cleaning. By using a combination of Angelus Leather Dyes and Angelus Dye Reducer, an infinite amount of colors/hues can be achieved. As Angelus Dye is the strongest dye on the market, add dye sparingly until desired color is obtained.

#861 Available in 4oz, Quart, & Gallon



ALL PURPOSE CEMENT THINNER #862

For Professional Use Only

This is for professional use only. An Ideal product for thinning all purpose neoprene based contact cements. Use for cement brush and pot clean-up. A good heavy duty cleaner for spray guns and leather tools.

#862 Available in Quart, Gallon, 5 Gallon Pail, and 55 Gallon Drum



ACETONE #864

For Professional Use Only

This is for professional use only. An economy based product for cleaning and stripping leather articles. Test on a small unseen area prior to overall use.

#864 Available in Quart, Gallon, & 5 Gallon Pail



PROFESSIONAL SHOE STRETCH #870

Angelus Shoe Stretch is a leather conditioner that will stretch shoes while you walk. Formulated to clean and stretch tight fitting shoes and boots. Works well on leather, suede, linen, canvas, and vinyl. Cleans patent leather instantly. Also used to clean natural suede. Test on a small unseen area prior to overall use.

#870 Available in two handy retail sizes. 2oz and 4oz pump sprays. Also available in Quart (with trigger sprayer) & Gallon.



DEODORIZER #875

Microbial spray used to eliminate odors in shoes, clothing, and upholstery. Spray thoroughly and allow to dry before use.

#875 Available in 4oz pump spray, Quart, & Gallon



SOLE BRIGHT #876

Perfect for curing oxidized rubber items such as yellowing soles and midsoles on sneakers. Will restore yellow rubber back to its original color.

#876 Available in 4 ounce



PREPARATION POWDER #890

For Professional Use Only

This is for professional use only. A heavy duty cleaner intended for professional shoe shine use. Add the 3oz powder jar to one gallon water to achieve a heavy duty shoe wash. To be used before applying creams or waxes to shoes and boots. Also great for use on tack.

#890 Available is 3 ounce powder. Colors - Black, Brown, & Tan



LEATHER WASH #891

For Professional Use Only

Liquid version of the #890. Already mixed for you. Apply liberally and rinse. Does not need to dry prior to using additional products. Also great on saddlery and tack.

#891 Available in 8 ounce, Quart, & Gallon . Colors - Black, Brown, Tan, & Neutral

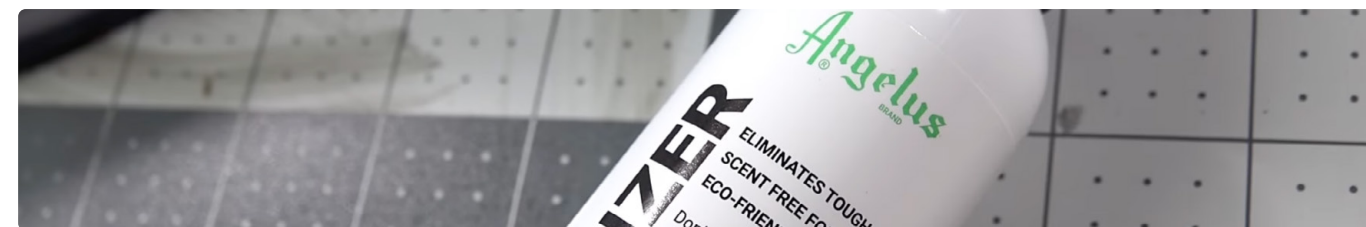


GENUINE MINK OILS #991

Mink oil has been used for many years by many industries to condition and protect leather, vinyl, and even some plastics. Helps prevent stains. Extend the life of your articles by keeping it clean and soft. Available in paste, liquid, and aerosol. Test on a small unseen area prior to overall use.

#991 Available in paste - 3oz plastic tub, 3oz metal can, 8oz plastic tub.

Also in 8oz liquid and 5.5oz aerosol. California Compliant.





CLEAR SHOE CEMENT #992

All purpose professional strength adhesive. Angelus Clear Shoe Cement works perfectly on rubber, leather, plastic, vinyl, fabrics & much more. This all purpose glue is a must-have for anyone that needs to re-glue the soles to their shoes or anything else you can think of. The clear formula allows it to be used on all surfaces without leaving any noticeable stains.

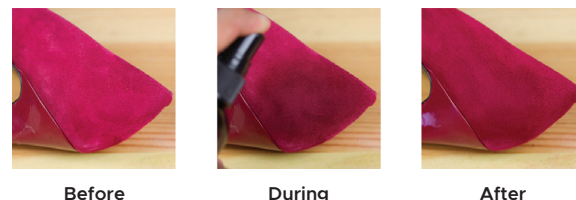
#992 Available in 4 oz.



SUEDE RENEW #894

Angelus Suede Renew rejuvenates suede & nubuck while helping to restore color. For use on most suede materials where nap has become rigid and/or faded.

Available in 4 oz. Pump Spray



Before

During

After

ACCESSORIES



ANGELUS DYELINERS #599

Fill the fine tip or broad tip Dyeliner with your favorite Angelus Leather Dye. Great for detailed dye work. Use over and over again. Just refill with the same dye.

#599 Available in Fine tip or Broad tip



PAINT BRUSH SET OF 5 #799-5-100

Ideal for Angelus Acrylic Paints. Made from synthetic fibers, Angelus Paint Brushes perform exceptionally well when paired with Angelus Acrylic Paints. The numerous soft fibers allow for longer, more satisfying strokes with minimal brush strokes left behind.

Includes one of each: #2 Round, #6 Flat, #10 Flat, #6 Filbert, 1/2" Angular



MICRO DETAIL PAINT BRUSH SET OF 5 #799-5-101

Angelus Micro Detail Paint Brush Set contains the professional grade tools you need for fine detail work on any project. Ideally used with Angelus Acrylic Leather Paint, this set is a must-have for every artist or customizer.

Includes one of each: #0 Round, #0 Angular, #0 Shader, #0 Spotter, #0 Filbert



PAINT MARKERS #799-3M-IND

Angelus Paint Markers come empty, ready to be filled with your color choice of Angelus Acrylic Paint mixed with Angelus 2-Thin (1:1 ratio). These markers feature a pump action valve which allows you to control the flow of the paint.

The replaceable tip is also reversible. One end features a chiseled tip, great for creating shapes and lines. While the other end features a rounded tip, perfect for small details or line work.

Available in 3mm, 5mm, 10mm, 3mm 10 pc set (page 22), 5mm 10 pc set (page 22).



REUSABLE MESH STRAINER #799-40-STRAINER

An absolute must-have for anyone using an airbrush with Angelus Paint. Completely reusable! Wash out with warm water and soap after every use. Made with metal mesh and a plastic body you can wash this over and over with great results.

Intended for people who use air brush and use our product 2-thin to thin the paint. Normal paint without 2-thin will take considerably longer to filter.



PREMIUM MASKING TAPE #799-PT-100

Made in the U.S.A. premium masking tape makes your masking jobs easy. Using a medium tack to stick to the shoe makes it so you can hit most angles while leaving no residue behind.

Available in 1" width.



RED VINYL TAPE #799-RT

Premium tape that is pliable enough to be bent around corners and sticky enough to cover those hard-to-stick surfaces like midsoles and canvas.

Available in 1" & 1/2" widths.



ACCESSORIES FOR EVERY PROJECT.



DETAIL KNIFE #992-00-KNIFE

The Angelus Detail Knife features a high quality anodized titanium handle, a soft comfort grip, and 6 total precision #2 blades. A perfect choice for every day use, the Angelus Detail Knife features quality materials that can stand up to almost any project.

Includes: Detail Knife, Safety Cap, 6 #2 Blades

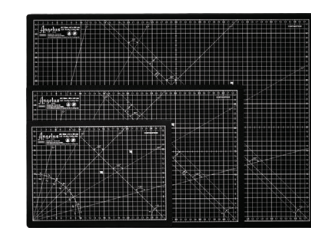
Replacement blades also available #992-05-BLADES.



DETAIL KNIFE W/ #11 BLADES #992-11-KNIFE

The Angelus #11 Detail Knife is perfect for projects that require high precision. The ultra sharp blade with precise fine point tip allows for cuts from top to bottom without lifting the edge. It's light weight aluminum handle with non-slip grip aids in maneuverability and precision.

Contents: Detail Knife, Safety Cap, 6 #11 Blades



ARTIST CUTTING MATT - #992-000-MAT

The all new Angelus Cutting Mats are made with extra thick materials that boast self-healing properties. These long-lasting mats feature centimeter measurements on one side and inches on the other. The high contrast print makes the grid lines and numbers extremely easy to read.

Available Sizes:
 9" x 12" (22cm x 30cm) - Item #992-912-MAT
 12" x 18" (30cm x 45cm) - Item #992-1218-MAT
 18" x 24" (45cm x 60cm) - Item #992-1824-MAT



SNEAKER CLEANING BRUSHES #992-05

The absolute best way to clean your sneakers while using an Angelus Cleaner. These 5 inch long brushes make cleaning your sneakers a breeze! The bristles are soft enough for suede yet strong enough to get dirt and grime off of your shoes.

Available with Synthetic Nylon or Hog Hair bristles.



ALL PURPOSE APPLICATOR PADS #992-20-PADS

The All Purpose Applicator pads are made from quality material that stays together and doesn't leave fuzz all over your custom sneakers like some other applicators do. A much better alternative to cotton balls since they don't change shape or soak up material.

Sold in packs of 20.



PROFESSIONAL SHINE RAG #999-00-BUFFRAGS

High quality 100% cotton shine rag used to buff shoes to a high shine.

Dimensions: 20" x 5.5" (51cm. X 14cm)



SHOE TREES #992-00-PSTREE

High quality Angelus Shoe Trees are used to help keep the original shape of your favorite shoes and sneakers. Angelus Shoe Trees also work great to fill the shoes during cleaning, painting, or any other sneaker restoration project.

One size fits shoe sizes 6-13 Men's.



HORSEHAIR SHINE BRUSH #992-HB-ROCKER

Angelus Shine Brushes are made with 100% real horsehair and are best used to apply shoe polish or buff to a high shine.

Rocker Shine Brush available in 5", 6.75", or 8" length with black or grey horsehair.
Wax Applicator Brush available in 6" length with 1.5" diameter black horsehair.



SANDPAPER #992-SP-400

Angelus Multi-Purpose Wet Sandpaper is ideal for your customizing needs. Whether you're sanding a surface for better adhesion, or smoothing out a rough surface, we've got the perfect sandpaper for you.

Available in:

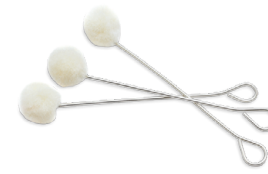
400 Grit - 5 sheets (Item #992-SP-400)

800 Grit - 5 sheets (Item #992-SP-800)

1500 Grit - 5 sheets (Item #992-SP-1200)

Assorted - 5 sheets of 400, 800, and 1500 (15 sheets total) (Item #992-SP-ASSORTED)

Sizing - 9"x11" Per Sheet



WOOL RING DAUBERS #992-05-000

Angelus Wool Ring Daubers are most commonly used to apply dyes. Wool will not be affected by solvents and can hold a large amount of liquid.

Available in packs of 100 pcs.



AIRBRUSH CLEANING POT #998-AB-POT

A must-have tool for all airbrush users! Easily clean out your airbrush without the messy over-spray. Replaceable filters help to minimize fumes during cleaning. The durable glass pot makes clean-up a breeze.

Also doubles as an airbrush holder to help keep your work space neat. Supports gravity-feed & siphon-feed airbrushes.

Airbrush sold separately.



KITS. EVERYTHING YOU NEED TO GET STARTED.



LEATHER PAINT BASICS KIT #799-01-BASICKITBOX /

Tackle your next leather project using the Angelus Leather Paint Basics Kit. This complete set includes all of the necessary tools and accessories to begin creating beautiful works of art or restoring your vintage leather pieces.

Kit Includes:

- Five 1 oz. Acrylic Leather Paints of your choice.
- Five assorted paint brushes
- One 1 oz. Leather Preparer & Deglazer

Available in retail chipboard packaging or e-commerce friendly poly bag packaging.



EASY CLEANER KIT #840-08-KIT

Perfect for anyone looking to keep their shoes nice and clean. The Angelus Easy Cleaner paired with the Angelus Cleaning Brush are an unstoppable combination. The Premium Microfiber Towel is great for wiping away the dirt & suds while leaving behind no residue.

Kit includes:

- 1 Easy Cleaner 8 oz.
- 1 Angelus Premium Cleaning Brush.
- 1 Premium Microfiber Towel.



FOAM-TEX CLEANING KIT #842-05-KIT

The new EASY way to clean your sneakers! Angelus Foam-Tex Gentle Foaming Cleaner uses a pump handle that creates foam directly onto your sneakers. Directions are simple! Simply Pump, Scrub, & Dry! Angelus Foam-Tex Cleaning Kit is a MUST-HAVE for any sneaker collector!

Kit includes:

- Angelus Foam-Tex Gentle Foaming Cleaner - 5.7 fl. oz.
- Premium Hog Hair Sneaker Cleaning Brush
- Premium Microfiber Towel



SUEDE AND NUBUCK KIT #895

The Angelus Nubuck & Suede Set removes most soil and spots on suede and nubuck. Restores appearance of article with ease. Will not change color or texture.

Kit includes:

- 1 - Suede Eraser
- 1 - Nylon Brush



SHOE SHINE TRAVEL KIT #411-02-001

Everything you need to get your boots & shoes looking their best while on the go. Comes with the products shown in a travel friendly bag. Shining on the go has never been easier!

Kit includes:

- 1 - Angelus Black Shoe Wax Polish - 60ml
- 1 - Angelus Black Lustre Cream - 3 fl. oz.
- 1 - Professional Buffing Cloth
- 1 - Wax Applicator Brush - 100% Horse Hair
- 1 - 5" Shine Brush - 100% Horse Hair
- 1 - Resealable bag for easy carry/storage



EMPTY PAINT MARKER SET #799-3M-2PK

Angelus Paint Markers come empty, ready to be filled with your color choice of Angelus Acrylic Paint mixed with Angelus 2-Thin (1:1 ratio). These markers feature a pump action valve which allows you to control the flow of the paint.

Set Includes:

- 2x Angelus Empty Paint Marker's
- 10x Dual-Sided Replacement Tips
- 2x Eye Droppers

PRIVATE PACKAGING



ANGELUS BRAND, NOT JUST SHOE POLISH ANYMORE

In addition to our fine line of leather care and coloring products, we offer the following:

Contract Packing, Filling, and Labeling Service

All Angelus items too!

"Private Label" Services

Shrinkwrap Services

Low Minimums & Quick Turn Times

High Quality Work by Experienced Crew (20+ Years)

Domestic & International Shipping

Drop Shipping Available on Angelus Items as well as Private Label and Pack Items

Angelus[®] BRAND

Since 1907 • Honesty and Hard Work • Family Owned
12060 Florence Avenue • Santa Fe Springs, CA 90670 • AngelusShoePolish.com
Tel: 562.941.4242 • Fax: 562.944.7705 • Hours: Monday - Friday 7:00 A.M. – 3:00 P.M.



@AngelusShoePolish



@AngelusBrand



Search For Angelus Brand
On Facebook



@Angelus Shoe Polish

2020 © Copyright Angelus Shoe Polish • ® Angelus Brand is a registered trademark of Angelus Shoe Polish Company

All logos, trademarks, product names are the ® registered property of their respective companies.