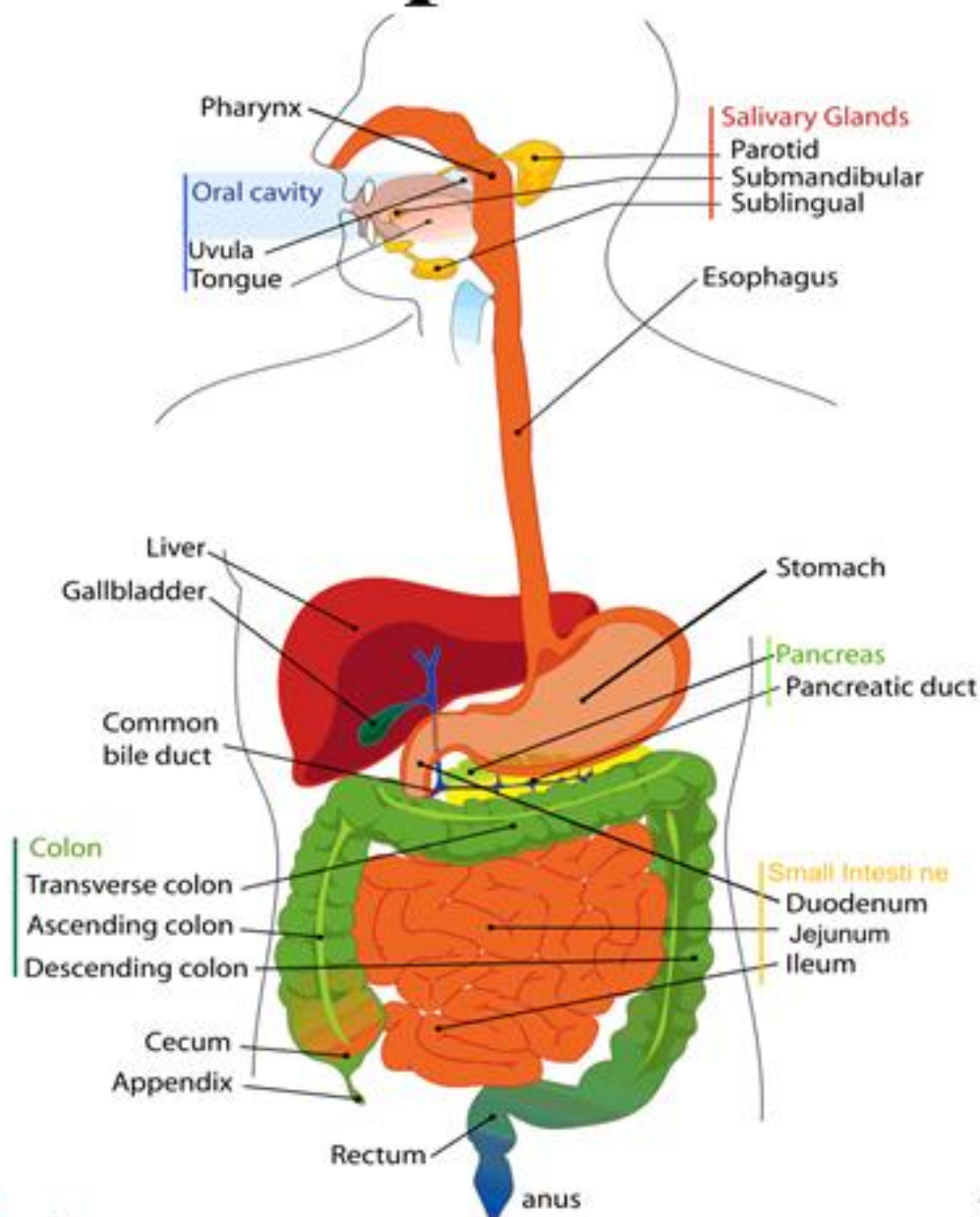


Digestive System

Lapbook



L-DIGEST

**Written &
Designed by
Cyndi Kinney**

Digestive System Lapbook
Copyright © 2012 Knowledge Box Central
www.KnowledgeBoxCentral.com

ISBN #

Ebook: 978-1-61625-561-9
CD: 978-1-61625-559-6
Printed: 978-1-61625-560-2
Assembled: 978-1-61625-562-6



Publisher: Knowledge Box Central
<http://www.knowledgeboxcentral.com>

All rights reserved. No part of this publication may be reproduced, stored in a retrieval system or transmitted in any form by any means, electronic, mechanical, photocopy, recording or otherwise, without the prior permission of the publisher, except as provided by USA copyright law.

The purchaser of the eBook or CD is licensed to copy this information for use with the immediate family members only. If you are interested in copying for a larger group, please contact the publisher.

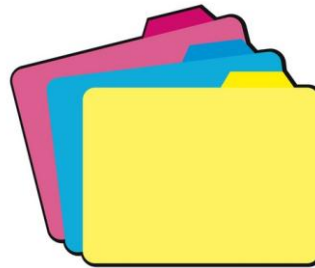
Printed or Assembled formats are not to be copied and are consumable. They are designed for one student only.

All information and graphics within this product are originals or have been used with permission from its owners, and credit has been given when appropriate. These include, but are not limited to the following: www.iclipart.com, Art Explosion Clipart, www.neok12.com, www.okaloosa.k12.fl.us, <http://worksheets.theteacherscorner.net>, and www.nlm.nih.gov,

Special thanks to Carrie Martin-Vegue. She is the author of the Study Guide that is included in this product. The Study Guide is being used with her permission and is now owned by Knowledge Box Central.

How do I get started?

First, you will want to gather your supplies.



*** Assembly:

***Folders:** We use colored file folders, which can be found at Walmart, Sam's, Office Depot, Costco, etc. You will need between 1 and 4 file folders, depending on which product you have purchased. You may use manila folders if you prefer, but we have found that children respond better with the brightly colored folders. Don't worry about the tabs...they aren't important. Within this product, you will be given easy, step-by-step instructions for how to fold and assemble these folders. *If you prefer, you can purchase the assembled lapbook bases from our website.*

***Glue:** For the folder assembly, we use hot glue. For booklet assembly, we use glue sticks and sometimes hot glue, depending on the specific booklet. We have found that bottle glue stays wet for too long, so it's not a great choice for lapbooking. For gluing the folders together, we suggest using hot glue, but **ONLY** with adult supervision. These things get **SUPER** hot, and can cause **SEVERE** burns within seconds.



***Other Supplies:** Of course, you will need scissors. Many booklets require additional supplies. Some of these include metal brad fasteners, paper clips, ribbon, yarn, staples, hole puncher, etc.



You may want to add decorations of your own, including stickers, buttons, coloring pages, cut-out clipart, etc. Sometimes, we even use scrapbooking supplies. The most important thing is to use your imagination! Make it your own!!



Ok. I've gathered the supplies. Now how do I use this product?

Inside, you will find several sections. They are as follows:

1. **Layout and Pictures:** This section gives instructions and diagrams that will tell the student exactly how to assemble the lapbook base and where to glue each booklet into the base. Depending on the student's age, he or she may need assistance with this process, especially if you choose to allow the student to use hot glue.

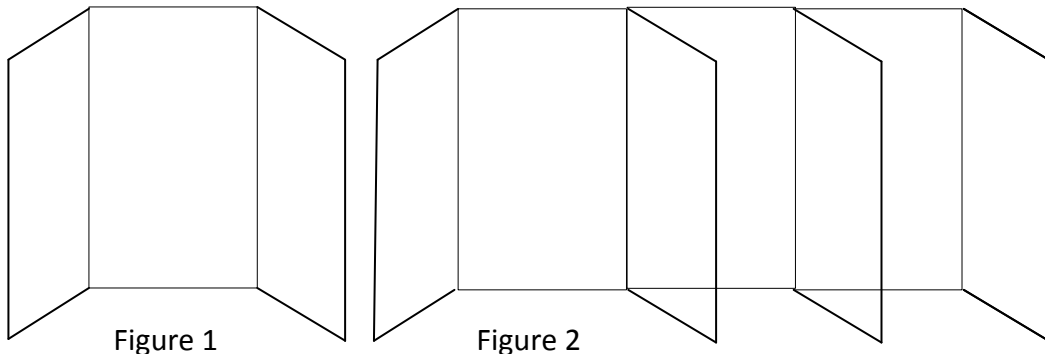
2. **Student Instruction Guide:** This section is written directly to the student, in language that he or she can understand. However, depending on the age of the child, there may be some parent/teacher assistance needed. This section will also tell the student exactly what should be written inside each booklet as he or she comes to it during the study, as well as telling the student which folder each booklet will be glued into.

3. **Booklet Templates:** This section includes ALL of the templates for the booklets. These have been printed on colors that will help to improve retention of the information presented, according to scientific research on color psychology.

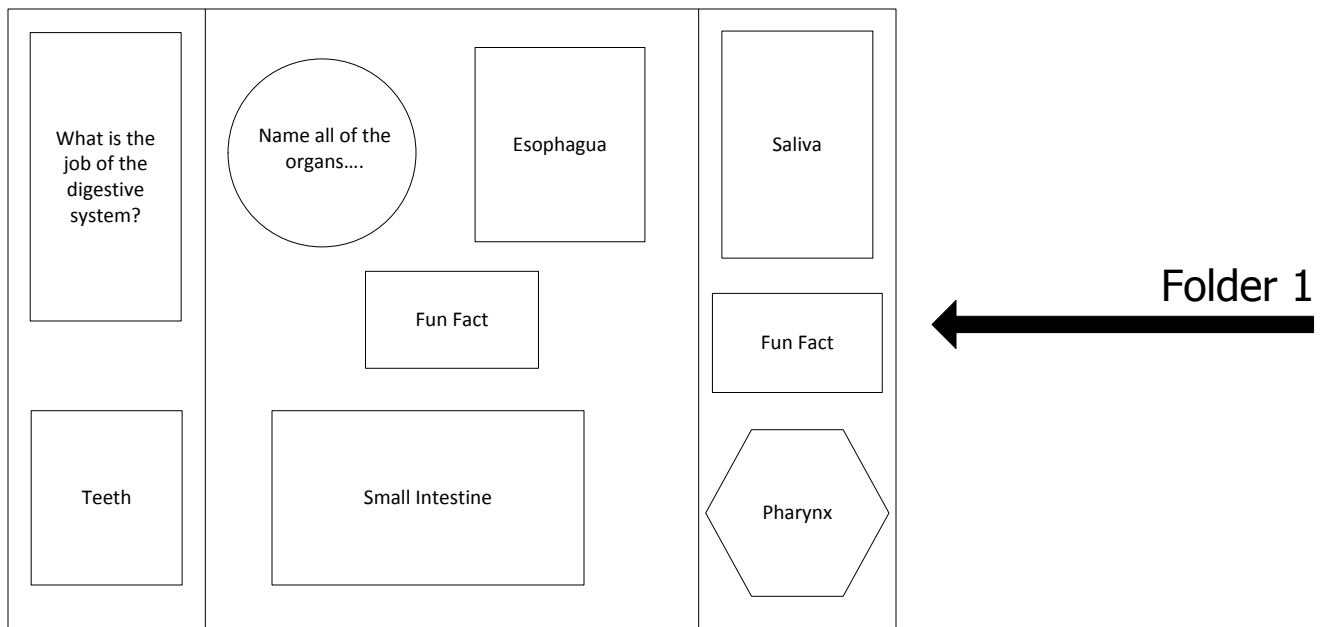
Digestive System Lapbook

Layout & Pictures

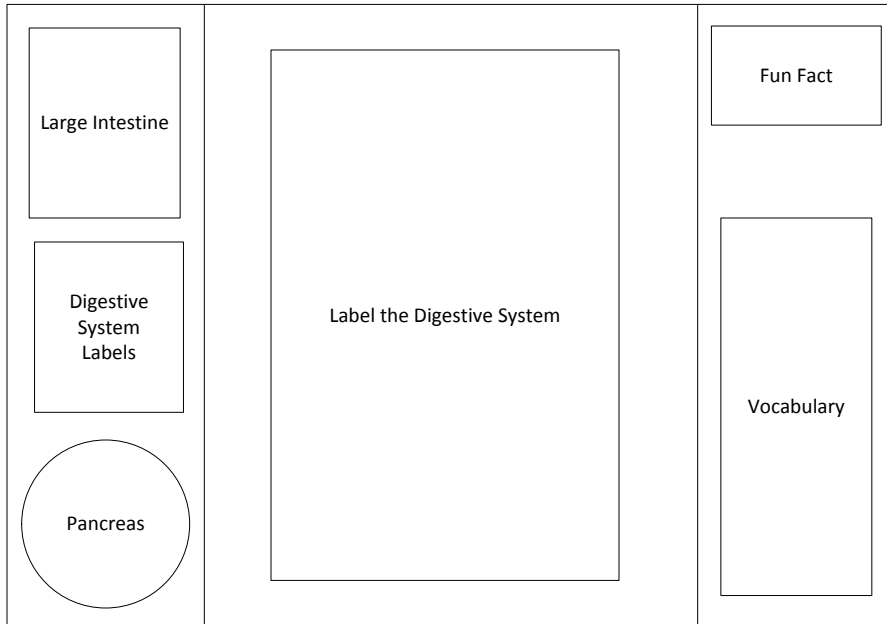
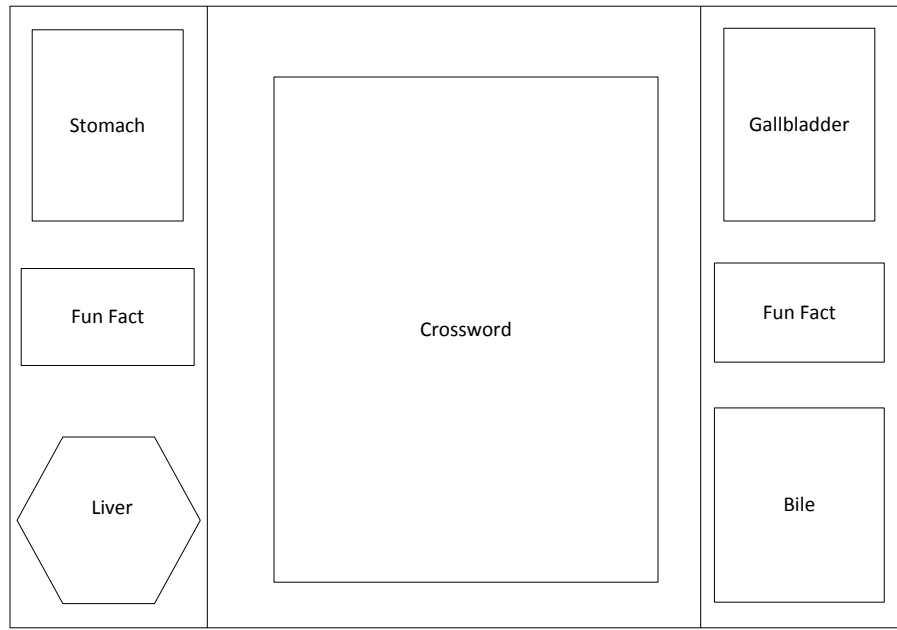
You will need 3 folders of any color. For each folder, you will fold both sides toward the original middle fold and make firm creases on these folds (Figure 1). Then glue the folders together along one flap (Figure 2).



This is the "Layout" for your lapbook. The shapes are not exact on the layout, but you will get the idea of where each booklet should go inside your lapbook.



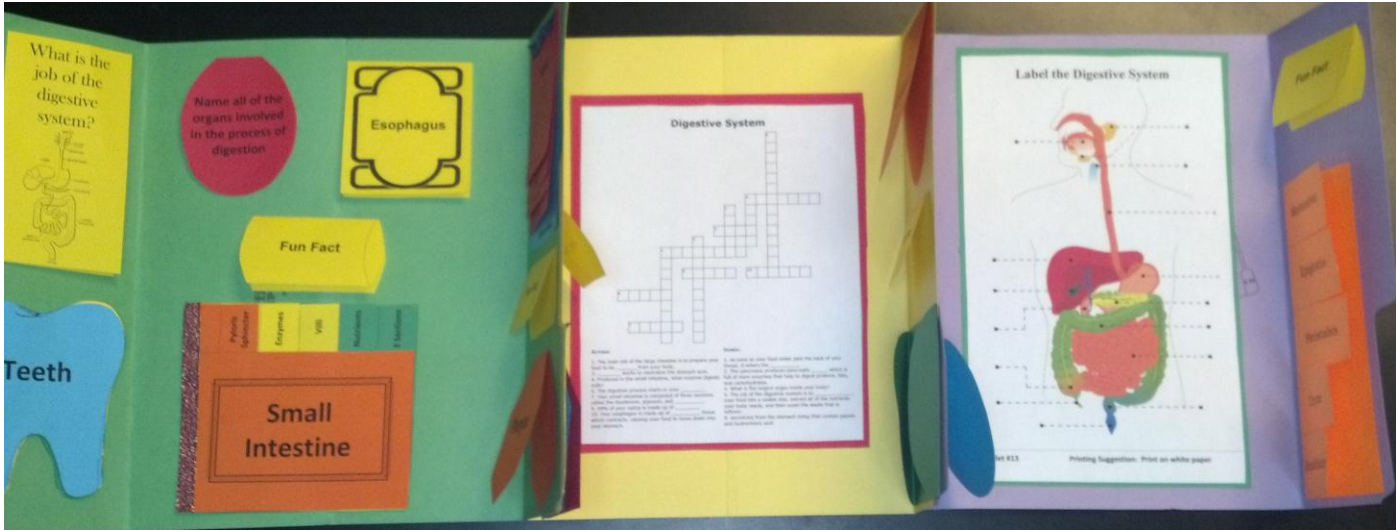
Folder 2



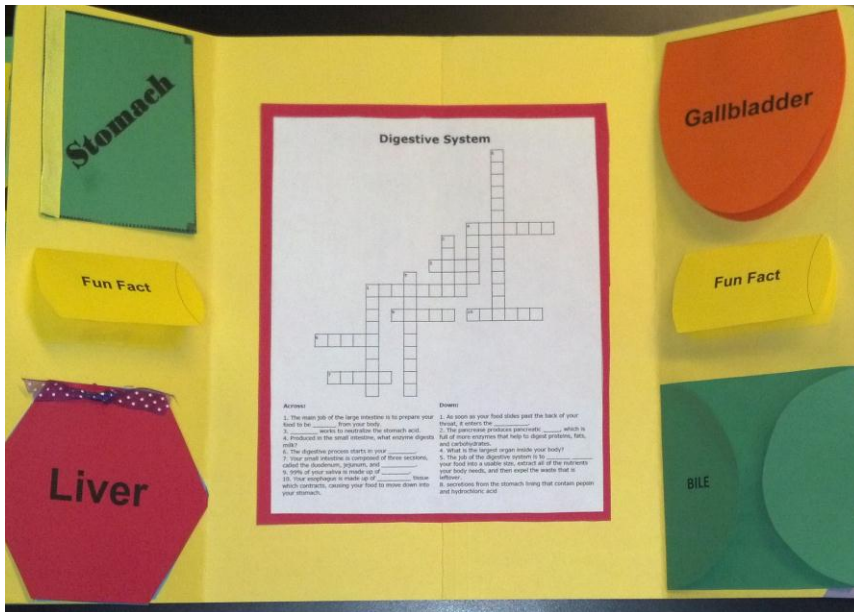
Folder 1



Below is a picture of a completed lapbook!!! This should help in figuring out how to assemble the booklets and then how to put it all together!



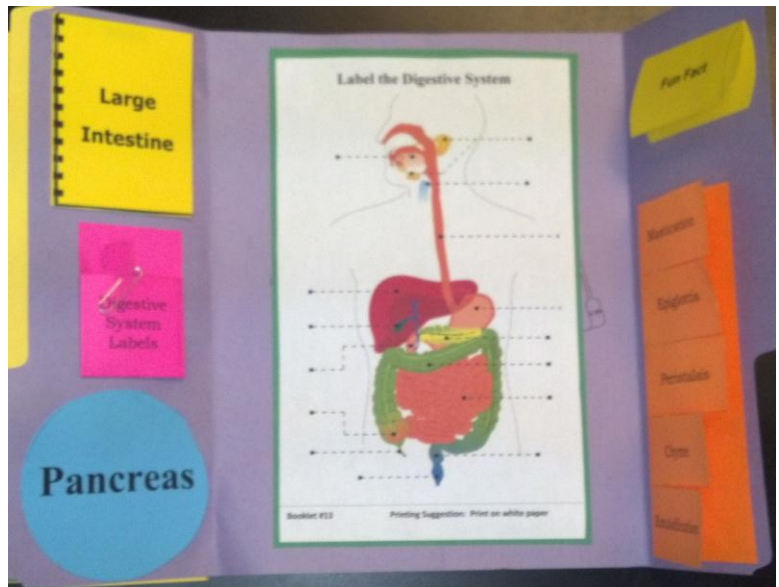
← Folder 1



Folder 2



Folder 3



Digestive System Lapbook

Student Instruction Guide

Booklet 1: What is the Job of the Digestive System?

Assembly Instructions: Cut out along the outer black line edges of the booklet. Fold along the center line so that the title is on the front.

Completion Instructions: Briefly explain the main job of your digestive system.

Booklet 2: Name All of the Organs Involved in the Process of Digestion

Assembly Instructions: Cut out along the outer black line edges of the booklet. Fold along the center line so that the title is on the front.

Completion Instructions: The process of digestion involves many of your organs. List them all here.

Booklet 3: Teeth

Assembly Instructions: Cut out along the outer black line edges of each page. Stack the pages so that the title is on top. Punch 1 hole in the top of the stack, and secure with a metal brad fastener.

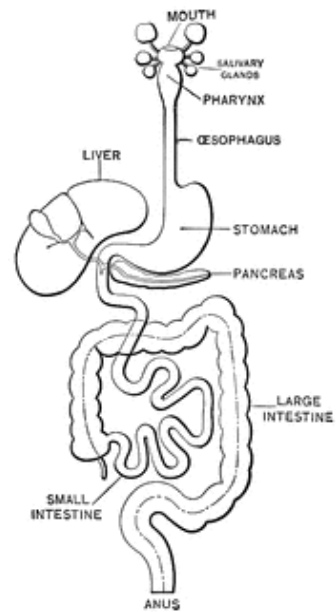
Completion Instructions: As you take your first bite of food, your teeth begin processing it. Tell about their jobs inside this booklet.

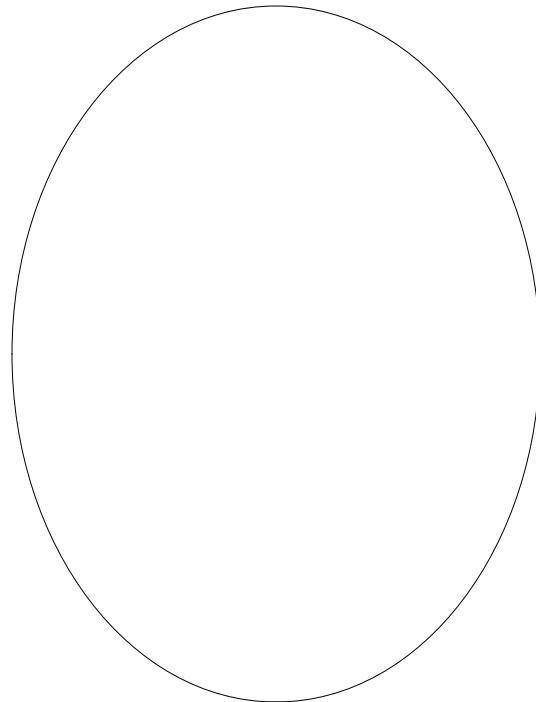
Booklet 4: Saliva

Assembly Instructions: Cut out along the outer black line edges of each page. Stack them so that the title is on the top and the pages get longer toward the back. Along the top edge, punch 2 holes, and secure with metal brad fasteners or ribbon.

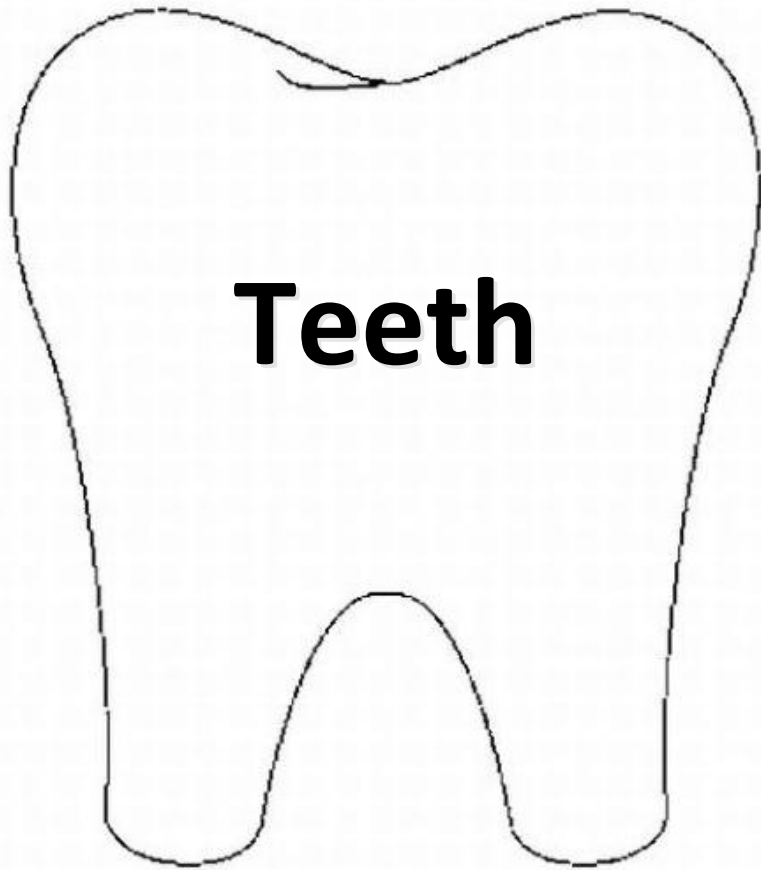
Completion Instructions: As soon as that first delicious smell comes out of the kitchen, your mouth is already beginning to produce saliva. Tell about this amazing part of your digestive system.

What is the
job of the
digestive
system?

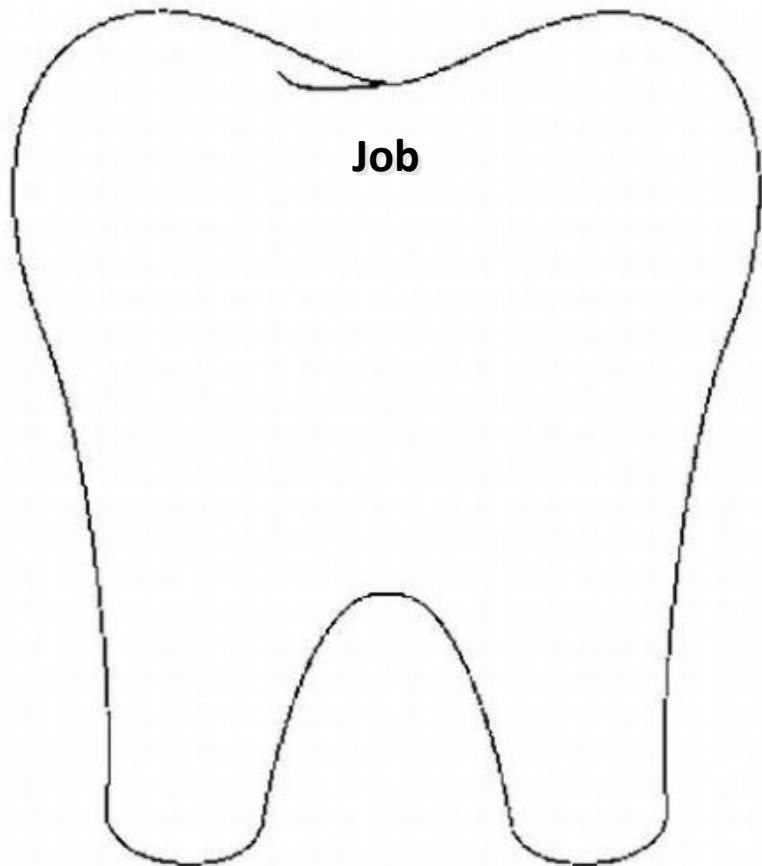




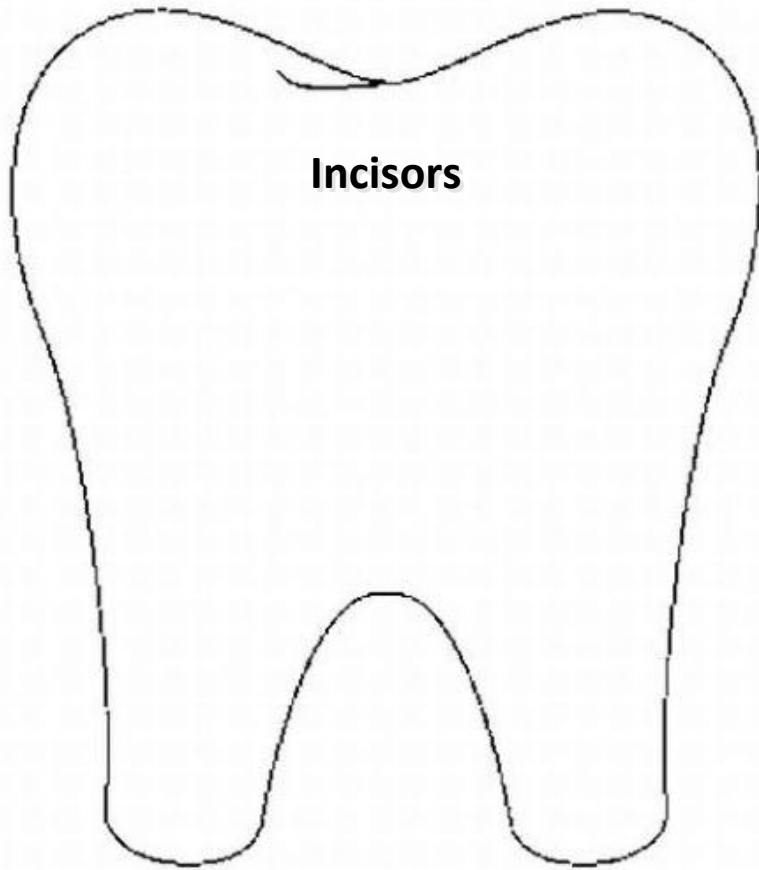
**Name all of the
organs involved
in the process of
digestion**



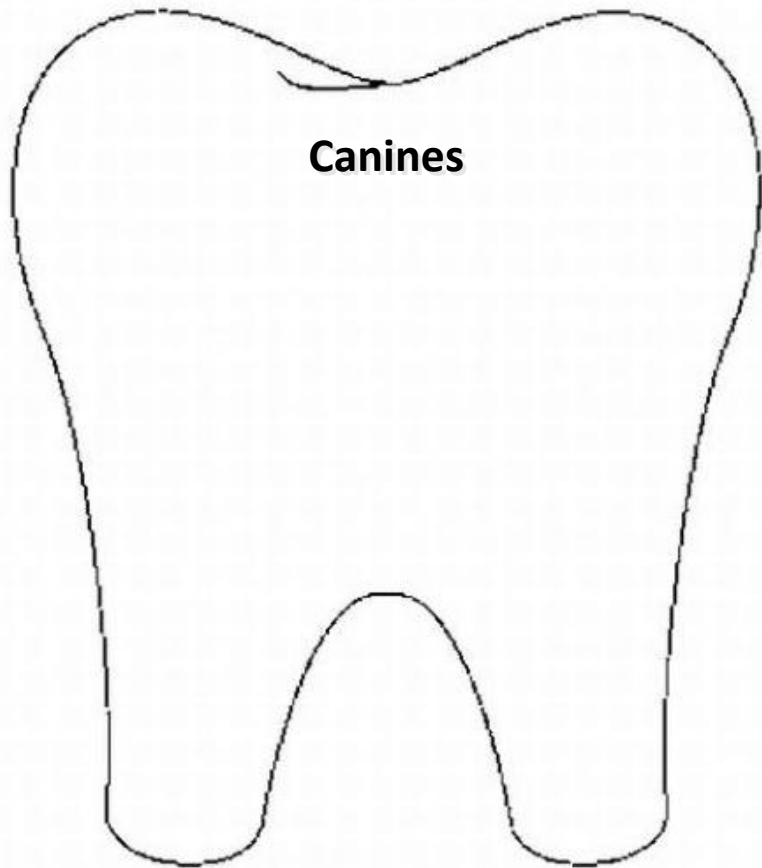
Teeth



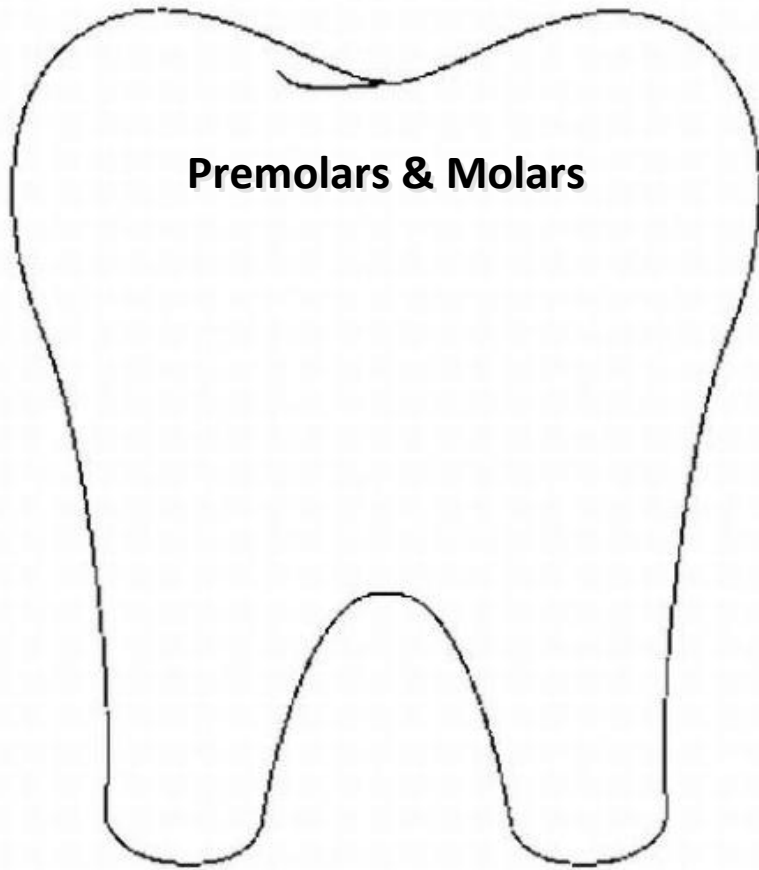
Job



Incisors



Canines



Premolars & Molars

The Digestive System

Lapbook

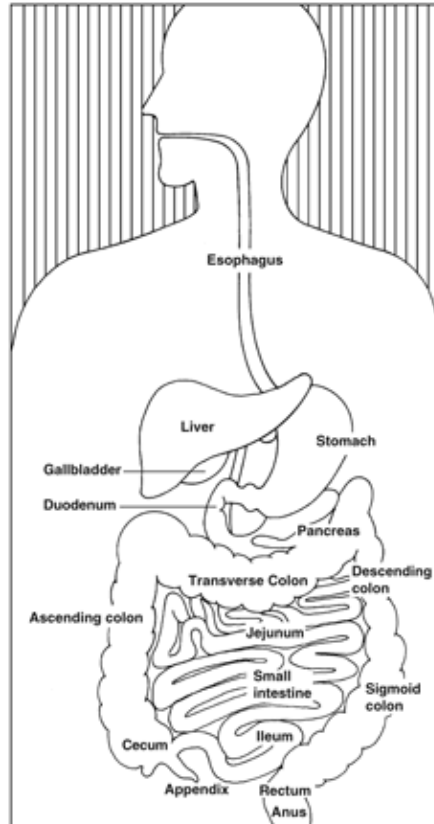
Teacher's/Study Guide

Have you ever wondered how the food you eat is used by your body? What happens after you swallow that last bite of your dinner? Where does it go? How does your body get the energy you need throughout the day from your food?

The food that you eat is not usable in its current form. While the way it's prepared makes it taste good, the food is too large for your body to be able to extract the nutrients it needs to keep you alive. So the job of the digestive system is to break down your food into a usable size, extract all of the nutrients your body needs, and then expel the waste that is leftover.

There are many organs involved in this process. Obviously, the food begins in your mouth. As you chew, your teeth are already beginning the process of breaking the food up into smaller portions. After you swallow, your food enters your throat, also known as the pharynx. The pharynx leads to the esophagus, which is a hollow tube that carries the food into your stomach. After the stomach, your food spends some time in the small intestine and finally moves on to the large intestine where any small bits of nutrients left are extracted. Eventually, all that is left is waste material which continues to travel through the large intestine to the rectum and out through the anus.

This is, of course, a very simplified explanation of the digestive system. Let's take a closer look at how your food travels throughout your body and is broken down into nutrients.



<http://digestive.niddk.nih.gov/ddiseases/pubs/yrdd/>

Teeth

As you take your first bite of food, your teeth begin processing it. Their job is to break your food down into smaller bites that are easier to digest. There are several different types of teeth in your mouth and each one has a different job.

The incisor teeth are the ones right in the front of your mouth. Incisors are sharp, so their job is to slice through food as you take a bite. If you have ever placed your finger in a baby's mouth and been bitten, you will know firsthand how sharp these teeth are!

Right behind the incisors are the canines. These teeth are not as sharp as the incisors. Their job is to tear your food. Imagine eating a tough piece of beef jerky. Do you use your front teeth? No! You grab onto that meat with some of your back teeth and pull. Beef jerky is so tough that your canine teeth are better suited for the job of tearing off a bite.