



RETAINING WALL

ASSEMBLY INSTRUCTIONS

Prepare the base: Ensure a stable and frost-free base of stabilized gravel or similar material. The depth should be between 30-90 cm, depending on soil conditions. (Consult with a contractor to ensure correct installation and maximum durability).

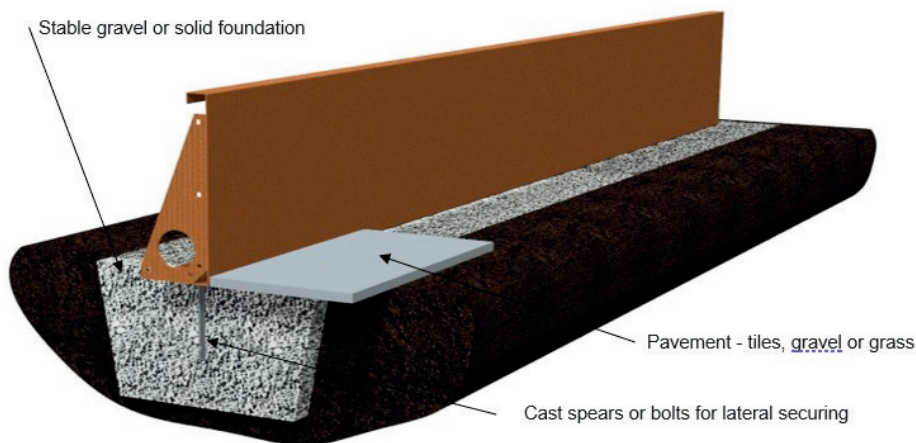
ELEMENTS

Assemble the elements using the included bolts.

Lateral securing: This can be done directly by spot casting the included casting spikes or using expansion bolts in your own base. Alternatively, the wall can be buried to a depth of 10% of its height in compacted stabilized gravel.

Drainage preparation: Prepare a drain on the interior side of the retaining wall.

Backfilling: If necessary, backfilling can be done on the interior side of the wall.



TIPS

+ Consult with your contractor for assistance with soil conditions and the construction of the base, and possibly for assembly.

+ We recommend a foundation wall drainage board on the interior side of the wall.

+ Corten steel has a reduced lifespan if it is constantly underwater.

MAINTENANCE AND PATINATION

Initially corten steel may slightly stain the base. Depending on the weather, the patination will continue for several months. After this, the staining will only minimally transfer.

After assembly, we recommend washing all visible surfaces with soapy water to remove manufacturing oil and ensure a uniform patina development.

