



GARBAGE SCREEN CUBY #2

ASSEMBLY INSTRUCTIONS

Assemble on a soft surface to prevent scratching on the material.

It is recommended to have at least two people for this task.

Begin by mounting the planters to the base plate.

ELEMENTS

Step 1: Assembling the planters to the sides.

- Begin by mounting the planters onto the base plate.
 - Use M8 bolts and nuts in all the holes.
 - Note: The bolt heads should face downwards as they act as feet for the planter.

Step 2: Assemble the corner posts.

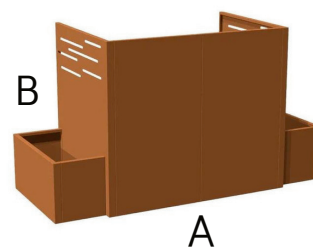
- Mount the corner posts to the upright side elements.

Step 3: Assemble the front panels.

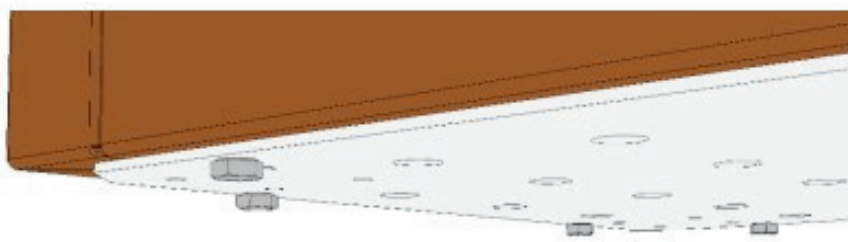
- Assemble the front panels. The number depends on how many receptacles the shelter is meant to contain.
 - Remember to mount the small joining plate at the bottom of the front panels.

Tools: 2 pcs. 13 mm wrench.

Ensure that you work on a level and flat surface.



A: Front panel 625 mm
B: Side panel 800 mm



Assembling plate — bolt heads



Step 1 +2



Step 3





GARBAGE SCREEN CUBY #2

Step 4: Raise the front panels

Raise the front panels and mount them between the two sides.

Step 5: Reinforcement (if necessary)

For versions with 3 or 4 bins, mount a reinforcement across the top bolt holes in the front panels.

Step 6: Securing to the ground: If desired, the planter can be secured to the ground using concrete anchors.

Step 4



Step 5



MAINTENANCE AND PATINATION

In the initial period, Corten steel may slightly stain the base. Depending on the weather, the patination will continue for several months. After this, it will only minimally transfer. After assembly, we recommend washing all visible surfaces in soapy water to remove manufacturing oil and ensure a uniform patination.

The cut edges on the galvanized plates will develop some corrosion over time. This is intended in the design and has no impact on durability.

