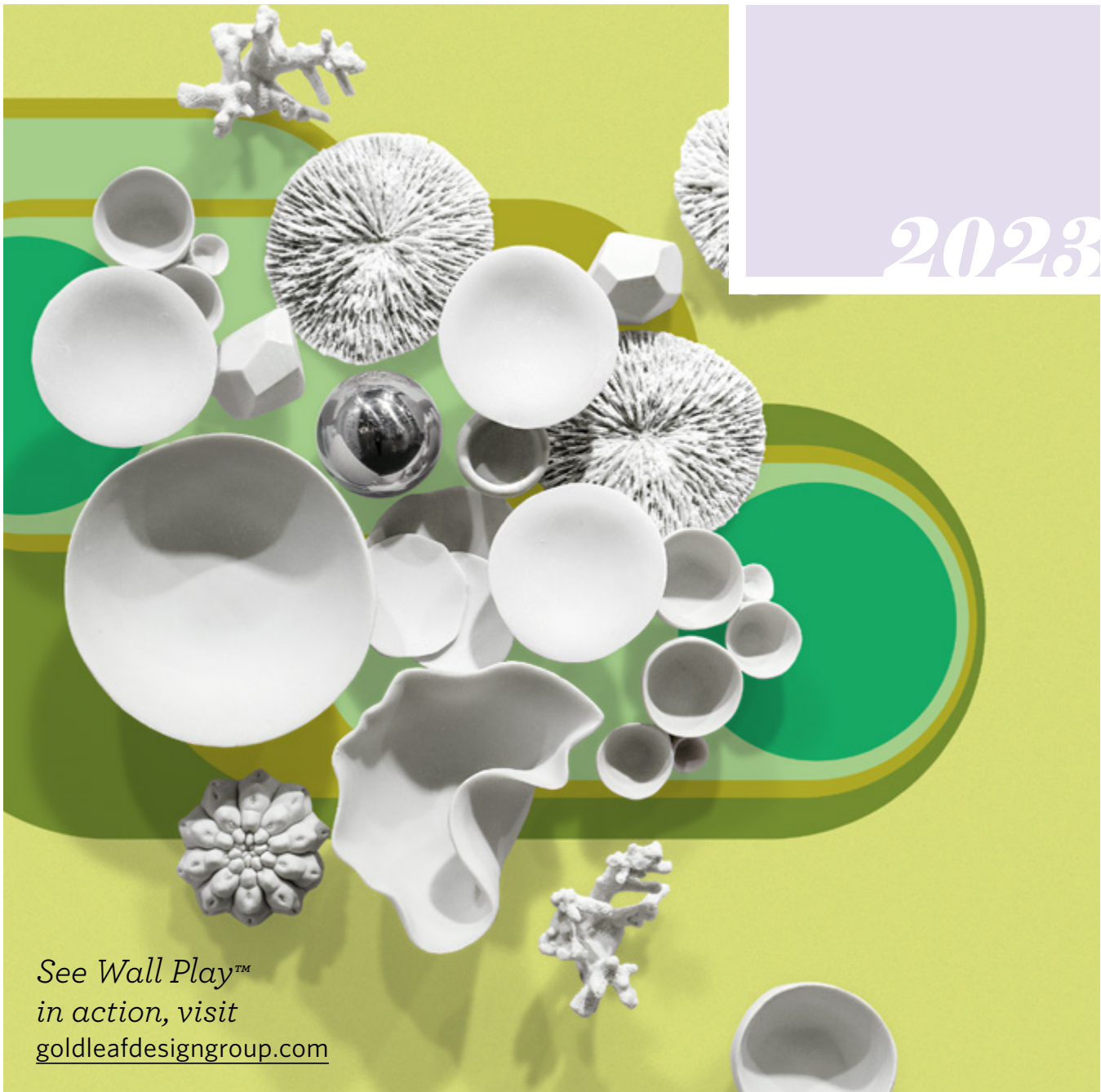


WALL PLAY™

BY GOLD LEAF
DESIGN GROUP

Instant Art

WITHOUT BORDERS



2023

See *Wall Play™*
in action, visit
goldleafdesigngroup.com

About Wall Play™

Wall Play™ is a Gold Leaf Design Group trademarked collection of over fifty unique, three-dimensional components that allow the creation of custom textural art almost anywhere. An installation can involve many individual components or a simple loose clustering of a few. The quantity used doesn't dictate the overall size of the completed installation. Be adventurous by repeating one shape, combining multiple shapes, clustering, and layering. Creating and enjoying your style is most important. There's no incorrect way and it's easy to create your WOW.

SPECS > Most Wall Play™ components are four inches or less in depth from a flat surface. The stainless steel screw is one inch long.

DURABILITY > is not easily breakable and has been used in many commercial settings for over 15+ years.

INSTALLATION > Wall Play™ is easy to install by mounting each directly to your wall or surface. For drywall, simply attach by screwing the entire component into the wall. For hardwood, we suggest pre-drilling a pilot hole using a 7/64" drill bit.

QUANTITY TO USE > The quantity of Wall Play™ doesn't dictate the overall size of the completed installation. Your designated installation space can adapt using a few or a larger quantity of Wall Play™ components. It depends on how abundant or minimal you want the final design to be. Formal or organic, repeating one style, combining multiple shapes, clustering, and layering are all choices available to you.

CUSTOMIZING > Painting, leafing, edging, adding botanicals to Wall Play™ and custom substrates are completed in our Chicago studio. Production time and additional charges apply. Contact quotes@gldg.net.

SUBSTRATES > Custom substrates can be manufactured in most dimensions and colors in our Chicago studio. We can complete your design and ship to your site, including security hardware. Production time and additional charges apply. Contact quotes@gldg.net.

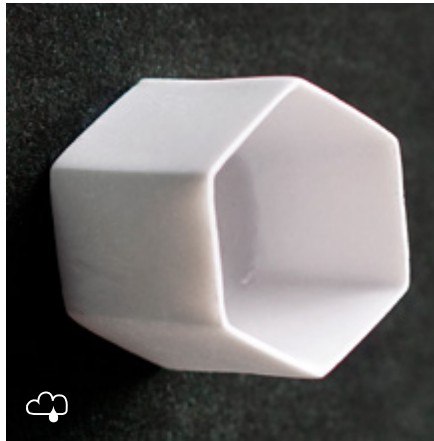
TEMPLATES > Work with one of our team members to create your own customized layout using any style of Wall Play™ or Wall Art. Production time and additional charges apply. Contact quotes@gldg.net.

OUTDOOR > Many styles are non-porous, impervious to the elements, have no leafing foil with inherent color, and have no surface painting. This collection is also perfect for customizing using your own paints. Some colors could fade with time and stainless steel is not marine grade which could corrode in salty environments (including winter salt use).

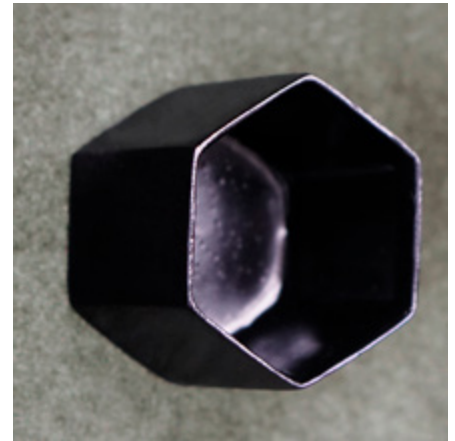
SUPPORT > Contact quotes@gldg.net. We love new ideas and are eager to help.



BARNACLE, GOLD FOIL
37842-G



BEEHIVE, OFF-WHITE
37838-W



BEEHIVE, BLACK
37838-B



CACTUS, OFF-WHITE
(SET OF 2) / 37843-W



CACTUS, GREEN MINT
(SET OF 2) / 37843-DG



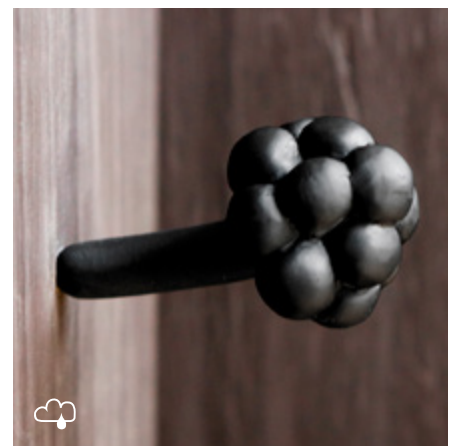
CANNABIS LEAF, OFF-WHITE
(SET OF 2) / 37865-W



CRYSTAL, OFF-WHITE
37827-W



DAISY, OFF-WHITE
37892-WH



DAISY, BLACK
37892-BK

☁ = Outdoor-friendly



DERMA, GREY
37875-LGY



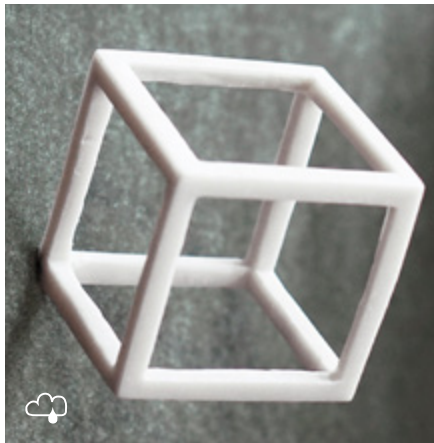
DERMA, BLACK
37875-B



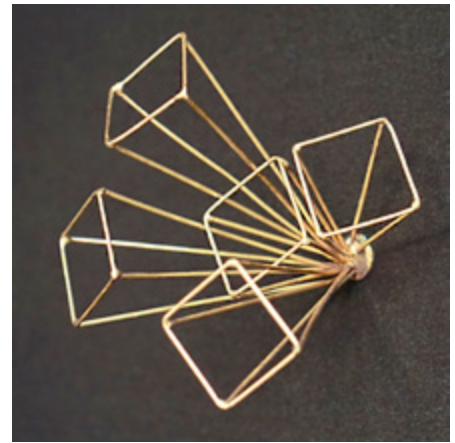
DERMA, OFF-WHITE
37875-W



CUBICAL, BLACK
37824-B



CUBICAL, OFF-WHITE
37824-W



RAYS, BRASS
BR3191



DAFFODIL, OFF-WHITE
37870-W

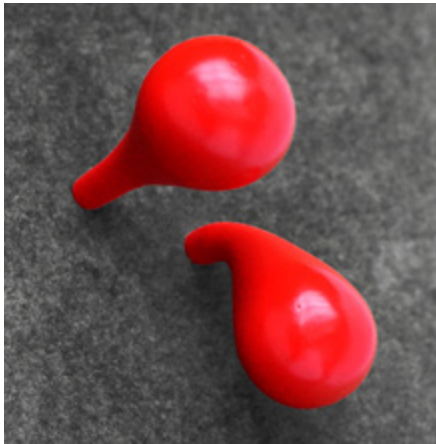


DAFFODIL, BLACK
37870-B



CORAL, OFF-WHITE
37820-W

☁ = Outdoor-friendly

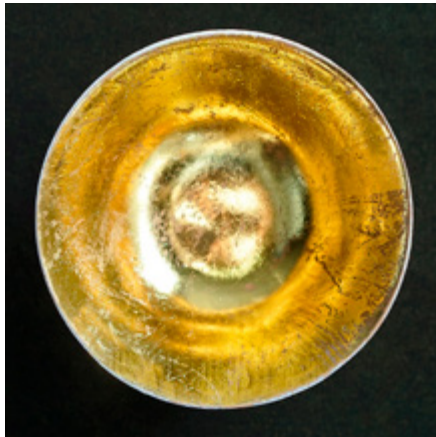


FIG, RED
(SET OF 2) / 37851-R



FIG, WHITE
(SET OF 2) / 37851-W

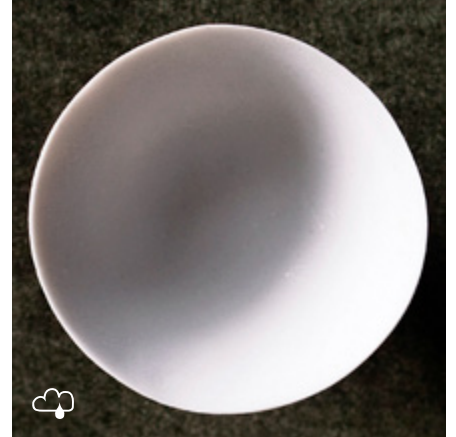
In Stock!
No production
time needed
for most styles.



FULL MOON, GOLD FOIL
37845-G



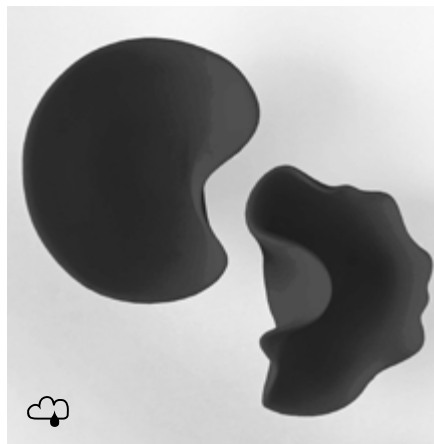
FULL MOON, SILVER FOIL
37845-S



FULL MOON, OFF-WHITE
37845-W



KOI, GOLD FOIL
(SET OF 2) / 37872-G



ORGANIC, BLACK
(SET OF 2) / 37832-BK



ORGANIC, OFF-WHITE
(SET OF 2) / 37832-W

☁ = Outdoor-friendly



LICHEN, OFF-WHITE
37871-W



LICHEN, GREY DOVE
37871-LGY



LICHEN, BLACK
37871-B

POPULAR COMBINATIONS

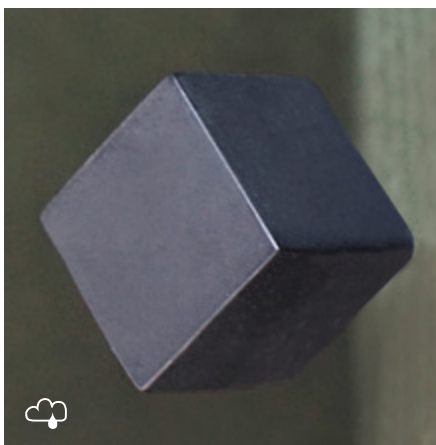
- Coral, Radica, Crystal, Seed & Parasol
- Fig & Cubical
- Trio, Seed & Full Moon
- Lichen, Derma & Daffodil
- Cactus & Seed
- Seed & Derma
- Plane & Orb
- Organic & Full Moon
- Koi & Orb
- Seed & Full Moon



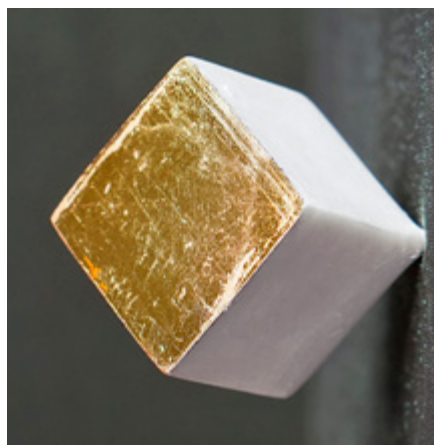
PARASOL, BLACK
(SET OF 2) / 37876-B



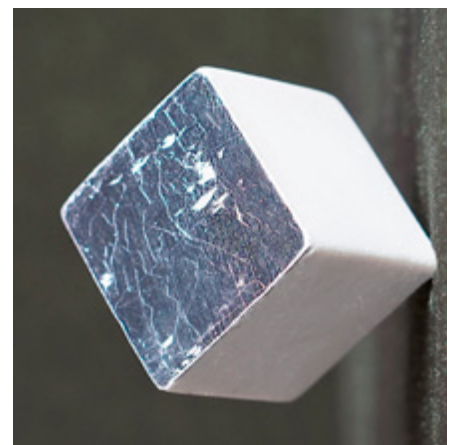
PARASOL, OFF-WHITE
(SET OF 2) / 37876-W



PIVOT, BLACK
37825-B



PIVOT, GOLD FOIL
37825-G



PIVOT, SILVER FOIL
37825-S

☁ = Outdoor-friendly



SEED, BLACK
37816-B



SEED, OFF-WHITE
37816-W



SEED, GREEN MINT
37816-GM



SEED, GOLD FOIL
37816-G



SEED, GREEN FOIL
37816-GR



SEED, RED FOIL
37816-RD



SEED, PURPLE FOIL
37816-PU

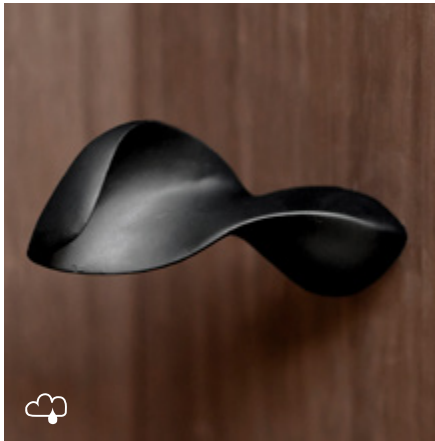


SEED, SILVER FOIL
37816-S

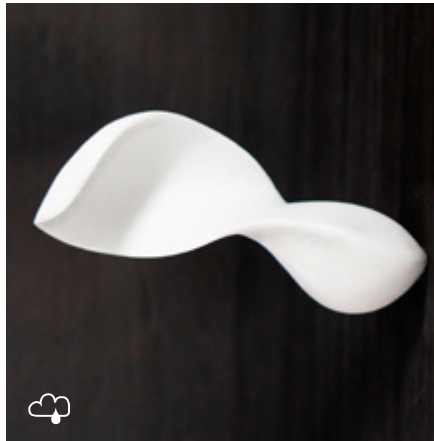


RADICA, OFF-WHITE
(SET OF 2) / 37848-W

☁ = Outdoor-friendly



TADPOLE, BLACK
37891-BK



TADPOLE, OFF-WHITE
37891-WH



ORB, STAINLESS
(SET OF 10, 3 SIZES) / SS2967-10



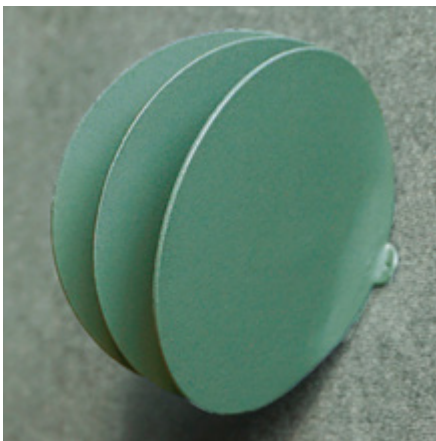
TRIO, BLACK
37868-B



TRIO, OFF-WHITE
37868-W



PLANE, STAINLESS
SS1870



STACK, GREEN EUCALYPTUS
IR1874-EG



STACK, GREY COOL
IR1874-LGY



STACK, STAINLESS
SS1874



FOLD, BLACK
IR1876-BK



FOLD, GREY DOVE
IR1876-LGY



FOLD, STAINLESS
SS1876



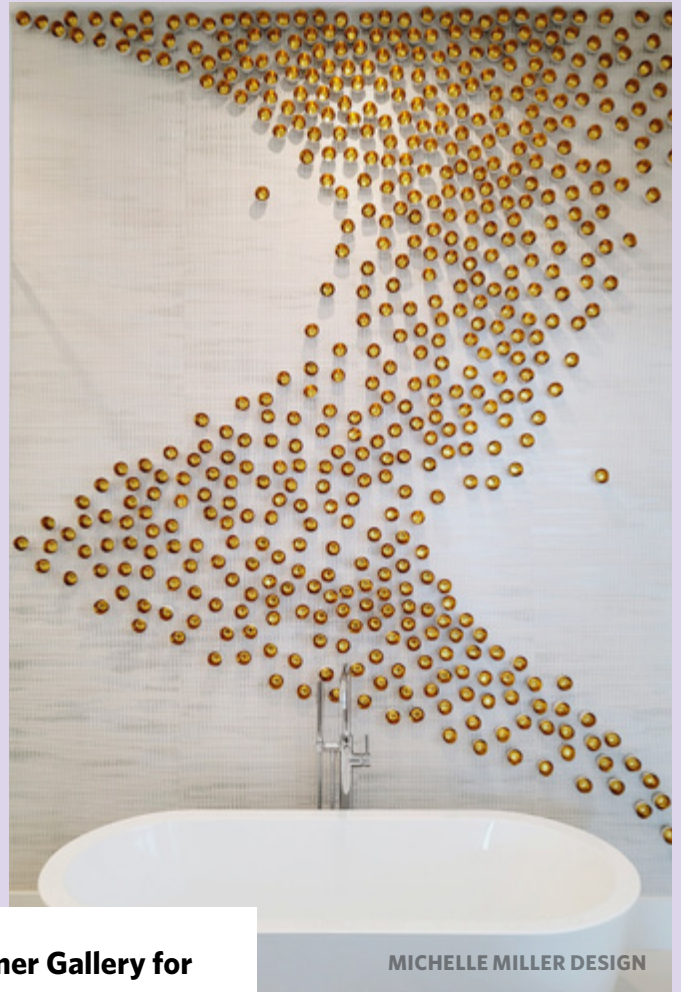
Design with Depth

Repeat, combine, and cluster styles to offer more texture. Layering Wall Play™ can create interest, complexity, and depth. Creating complex depth begins with the lowest profile shape as the bottom layer, being mindful of the width. Continue with the medium height Wall Play™ to add bulk while also being mindful of the width. The final layer is the cherry on top. This top layer allows the component to hover above the bottom and middle layers, adding complex dimension.

☁ = Outdoor-friendly



RESORT INTERIORS



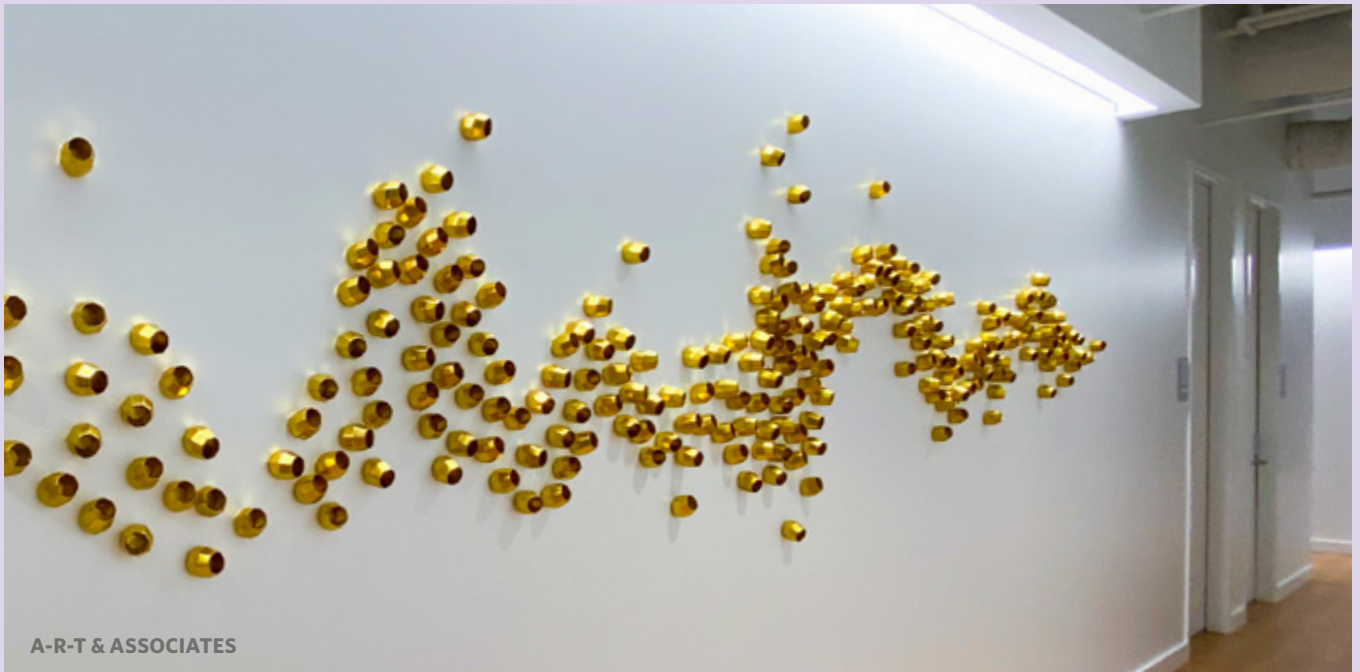
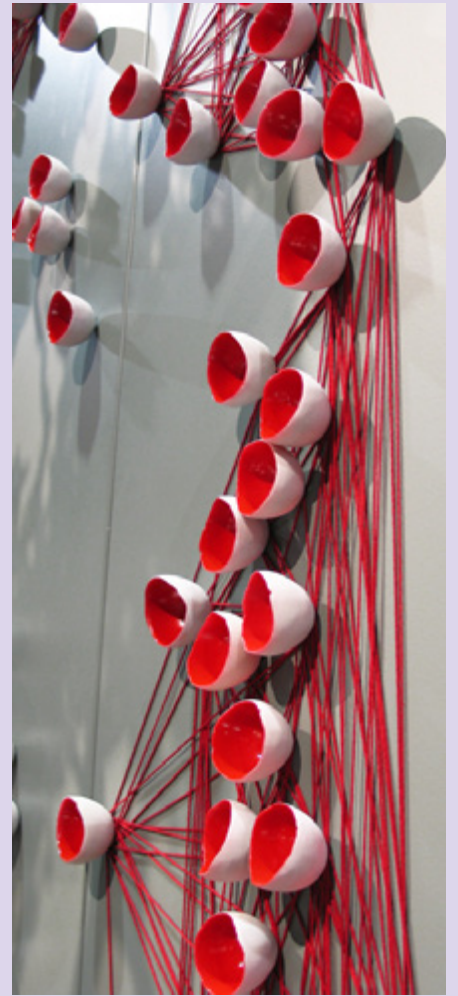
MICHELLE MILLER DESIGN

See our Designer Gallery for Wall Play™ inspiration at goldleafdesigngroup.com





GLS DESIGN



A-R-T & ASSOCIATES

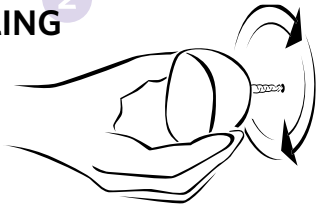
WALL PLAY™ INSTALLATION

PLANNING ¹

Decide the overall size of your design and how many pieces you would like to use. Sketching will help to explore options. Another way of visualizing your creation is to adhere Post-It® papers to your wall to represent each Wall Play™ shape. Move the papers around until you are happy. Experiment with clustering and loose flowing.

INSTALLING ²

- 1 Arrange
- 2 Twist
- 3 Enjoy



Wall Play™ is designed for easy installation. In soft material such as drywall, it is as easy as twist-and-go.

For harder material, we recommend pre-drilling pilot holes using a 7/64" drill bit (2.8mm). The softer the material, the smaller the drill bit you will need. Drill your holes right through the sticky notes.

BE CREATIVE ³

Wall Play™ is not just for vertical surfaces. You can add splashes of texture and color almost anywhere. Flow your design onto a ceiling, create a custom sculpture, customize furniture and more. Many styles are paintable and can even be used outdoors.

Have fun and enjoy.



TRY TIGHT CLUSTERS...



OR LOOSE & FLOWING

TIPS

- **For clustering,** it is important to note the widest dimension of each Wall Play™ style. This is the minimum distance required between each.
- **If overlapping** Wall Play™ of different heights, install the shorter one first, then the taller.
- **Broken screw?** Usually your substrate is too hard and a pilot hole is required using a 7/64" (2.8mm) drill bit. Remove the broken screw using needle nose pliers. Or leave as is and camouflage the broken screw with another Wall Play™ component.
- **Loose fitting?** Excessive screwing and unscrewing can make the screw hole less stable. Fill the hole with short pieces of toothpicks. Putting a small amount of glue on the screw also can help to secure better especially in thin drywall.
- **Caution.** Wall Play™ has sharp screws. Product is not made for use by children.