

# Stealthbox®

INSTALLATION GUIDE  
for the

**SB-VW-GTI/10TW3**

SKU# 94572

2006 - 2013 Volkswagen GTI MkV, Rabbit & R32



*Thank you for choosing a JL Audio Stealthbox® for your automotive sound system. With proper installation, your new vehicle-specific enclosed subwoofer system will deliver years of listening pleasure.*

*We strongly recommend that you have your new Stealthbox® installed by your authorized JL Audio dealer. The installation professionals employed by your dealer have the necessary tools and experience to disassemble and reassemble your vehicle properly. If you prefer to perform your own installation, please read this installation guide completely before beginning the process.*

**JL AUDIO®**  
*Ahead of the Curve™*

## ! IMPORTANT

If you choose to perform the installation yourself, it is absolutely vital that the Stealthbox® be properly mounted to the vehicle according to these instructions. Failure to mount the enclosure properly presents two problems:

- 1) The sub-bass performance will suffer due to the movement of the enclosure caused by the force exerted by the woofer(s).
- 2) A loose enclosure presents a serious safety hazard in the event of a collision or sudden deceleration.

**INSTALLATION  
DIFFICULTY:**

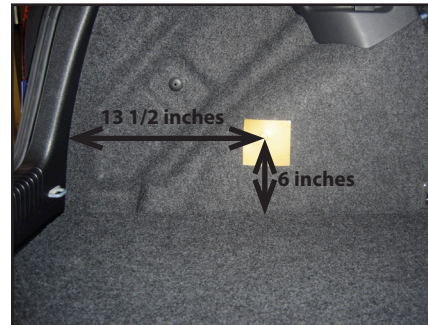
**2** OUT OF 5

**ESTIMATED TIME:  
1 HOUR**



### STEP 1

Remove any contents from the cargo area.



### STEP 2

Place the supplied wax square onto the driver's side rear cargo panel.



### STEP 3

Thread the supplied socket cup screw into the rear of the Stealthbox®.



**\*Read the next three steps to fully understand this procedure.\***

**STEP 4**

Place the Stealthbox® into the mounting location and press firmly onto the Stealthbox®.



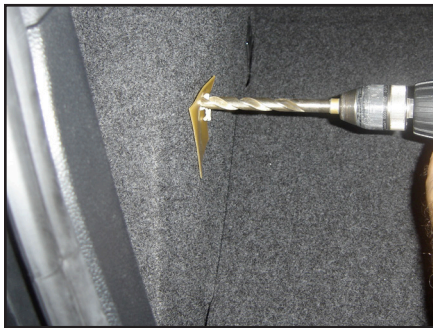
**STEP 4A**

The Stealthbox® needs to fit all the way to top plastic panel.



**STEP 4B**

The Stealthbox® will be raised off the floor. This is to allow the factory flooring to be pulled from the cargo area, once the Stealthbox® is installed.



**STEP 5**

**Note: Before drilling, you are drilling into the rear fender well. Once you protrude to the outside, do not go any further or you will be paying for a new rear tire. Always wear eye protection when drilling!**

With a drill and a 1/2-inch drill bit, drill through the impression made in the wax square.

Remove the wax square.



**STEP 6**

Run speaker wire from the amplifier's location to the Stealthbox® location and check for proper operation of the woofer.



**STEP 7**

Place the Stealthbox® into the mounting location. Guide the socket cup set screw through the drilled hole.



**STEP 8**

Jack up the driver's side rear of the vehicle. You should be able to access the socket cup set screw with the rear wheel on the car. If necessary, you may remove the wheel off the car.



**STEP 9**

Behind the strut, pull the black plastic guard to gain access to the protruding socket cup set screw.



**STEP 10**

Place a supplied fender washer, flat washer, split lock washer and hex nut onto the socket cup set screw. Secure, but do not over tighten.

**Note: For added protection it is recommended that you apply a bead of silicone between the vehicle and the fender washer. After the bolt assembly is tightly secured, it is also recommended that vehicle undercoating material is applied to the exposed assembly**



**CONGRATULATIONS**

You have completed the installation for this model!

Please refer to the Power Recommendation section for an amplifier recommendation and basic set-up help.

**INCLUDED HARDWARE**

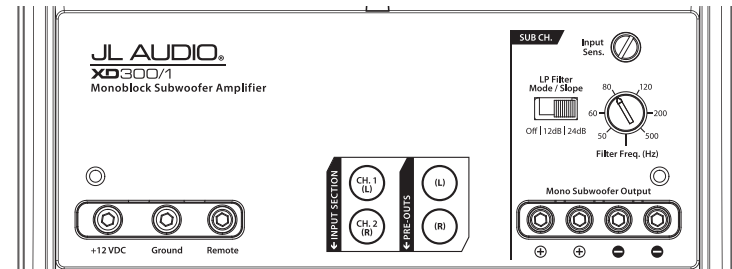
- (1) 3/8-inch -16 x 2 1/2-inch Socket Cup Set Screw
- (1) 3/8-inch Fender Washer
- (1) 3/8-inch Flat Washer
- (1) 3/8-inch Split Lock Washer
- (1) 3/8-inch -16 Hex Nut
- (1) 3" x 3" Wax Square

**SPECIFICATIONS**

Enclosure Type: Acoustic Suspension (sealed)  
 Driver Type: 10TW3-D4  
 Nominal Impedance: 2 ohms  
 Continuous Power Handling: 400 Watts

**POWER RECOMMENDATION**

JL Audio recommends using a high quality amplifier such as the JL Audio XD300/1v2. The diagram below shows the recommended crossover settings for the XD300/1v2 when being used to power your Stealthbox®.



The JL Audio XD300/1v2 is a very versatile audio component. Please consult the owner's manual for even more detailed information about installing and tuning this amplifier.

**MID/HIGH FREQUENCY DRIVER FITMENT**

A variety of JL Audio coaxial and component systems will fit in the factory speaker locations of you vehicle.

**Front Speaker Size / Location:** 6.5-inch / Front Doors  
**Fits JL Audio Models:** TR650-CSi, TR650-CXi, C2-650, C2-650x, C3-650, C5-650, C5-650x & ZR650-CSi



**Rear Speaker Size / Location:** 6.5-inch / Rear Doors / Side Panels  
**Fits JL Audio Models:** TR650-CSi, TR650-CXi, C2-650, C2-650x, C3-650, C5-650, C5-650x & ZR650-CSi

**JL AUDIO®**

*Ahead of the Curve™*

(954) 443-1100

www.jlaudio.com

All specifications are subject to change without notice. "JL Audio" and the JL Audio logo, "Stealthbox" and the Stealthbox logo are registered trademarks of JL Audio, Inc. "Ahead of the Curve" and its respective logo is a trademark of JL Audio, Inc.  
 JLA-SKU# 011250 - 09.20.2016 - Printed in USA - ©2016 JL Audio, Inc.  
 For more detailed information please visit us online at [www.jlaudio.com](http://www.jlaudio.com).

