

Stealthbox®

INSTALLATION GUIDE for the

SB-S-BRZFRS/10TW3

SKU# 94564

2013-Up Subaru BRZ, 2013-2016 Scion FRS, & 2017-Up Toyota 86



*Thank you for choosing a JL Audio Stealthbox® for your automotive sound system.
With proper installation, your new vehicle-specific enclosed subwoofer system
will deliver years of listening pleasure.*

*We strongly recommend that you have your new Stealthbox® installed by your authorized
JL Audio dealer. The installation professionals employed by your dealer have the necessary tools
and experience to disassemble and reassemble your vehicle properly. If you prefer to perform your
own installation, please read this installation guide completely before beginning the process.*

JL AUDIO®
Ahead of the Curve™

! IMPORTANT

If you choose to perform the installation yourself, it is absolutely vital that the Stealthbox® be properly mounted to the vehicle according to these instructions. Failure to mount the enclosure properly presents two problems:

- 1) The sub-bass performance will suffer due to the movement of the enclosure caused by the force exerted by the woofer(s).
- 2) A loose enclosure presents a serious safety hazard in the event of a collision or sudden deceleration.

INSTALLATION DIFFICULTY:

2 OUT
OF 5

ESTIMATED TIME:
1 HOUR

SPECIFICATIONS

Enclosure Type: Sealed

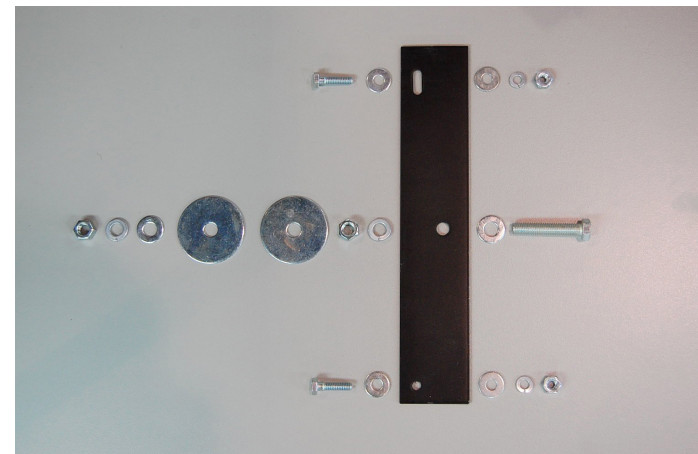
Driver Type: 10TW3-D4

Nominal Impedance: 2 ohms

Continuous Power Handling: 400 watts (RMS method)

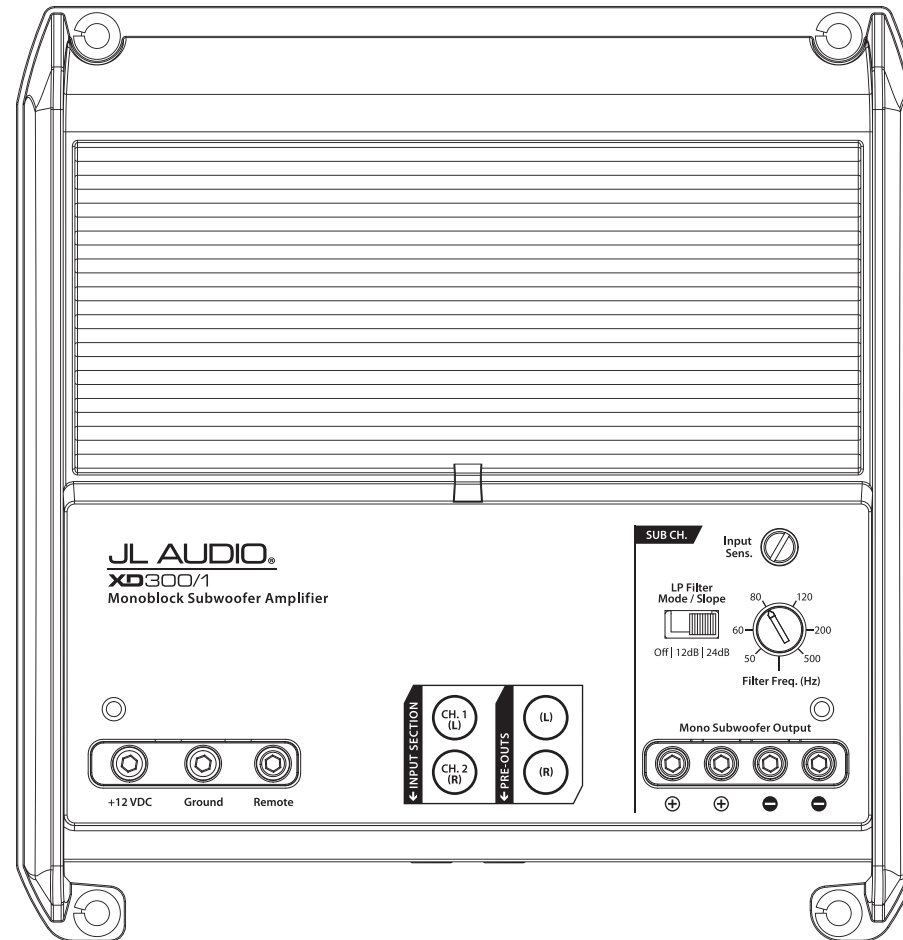
INCLUDED HARDWARE

- (1) BRZ Mounting Bracket
- (2) 1/4 - 20 x 1" Bolt
- (4) 1/4" Flat Washer
- (2) 1/4" Lock Washer
- (2) 1/4 - 20 Hex Nut
- (1) 3/8 - 16 x 2" Bolt
- (2) 3/8" Flat Washer
- (2) 3/8" Fender Washer
- (2) 3/8" Lock Washer
- (2) 3/8 - 16 Hex Nut



POWER RECOMMENDATION

JL Audio recommends high quality amplifiers such as the JL Audio XD300/1v2. The diagram below shows the recommended crossover settings for the XD300/1v2. For a detailed description of the amplifier settings, consult the owner's manual for the amplifier. If another amplifier is being used, please reference this illustration and use similar settings on that amplifier.



CONNECTIONS

Using quality power, signal, and speaker wire is essential in ensuring the performance of your Stealthbox®. JL Audio recommends using a 4 AWG power kit such as the XD-PCS4-1B for your Stealthbox® amplifier. Other kits are available should you be using more than one amplifier. Signal wire such as the JL Audio Premium Audio Interconnect Cables should be used to provide signal for both channels of the amplifier. JL Audio recommends using 12AWG speaker wire for subwoofers.



STEP 1

Empty out the trunk of the vehicle.



STEP 2

Using a Phillips head screwdriver, remove the subwoofer from the Stealthbox®. Place the enclosure into position and use a Sharpie® to mark the location of the hole in the box onto the trunk liner. Remove the enclosure.

Note: It is not necessary to remove the grille before removing the subwoofer.



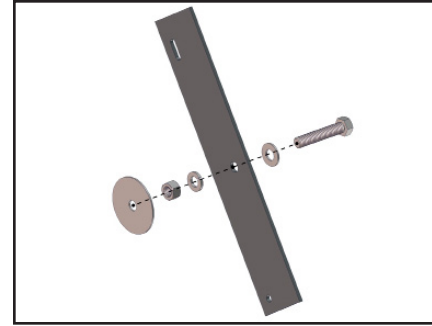
STEP 3

Carefully unclip and remove the trunk sill panel.



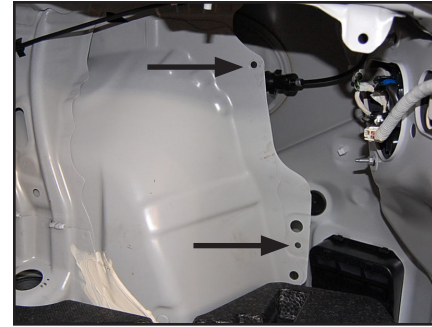
STEP 4

Remove the five clips that hold in the passenger side trunk liner and remove the liner. Cut a 1/2" diameter hole in the liner where marked in **Step 2**.



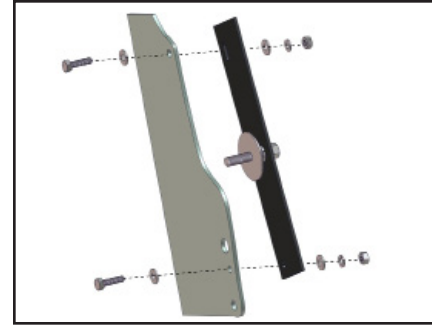
STEP 5

Create the illustrated assembly using a 3/8 - 16 x 2" Bolt, a 3/8" Lock Washer, a 3/8 - 16 Hex Nut, and a 3/8" Fender Washer.



STEP 6

Pictured is the passenger side of the trunk with the trunk liner removed. Locate the two indicated holes in the metal brace.



STEP 7

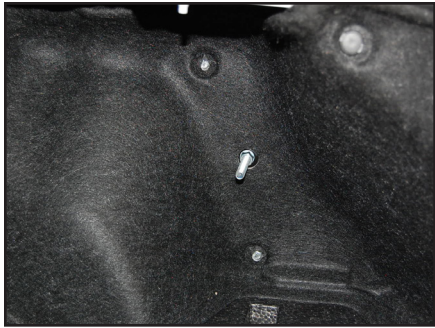
Attach the assembly from **Step 5** to the holes indicated in Step 6 using a pair of 1/4 - 20 x 1" Bolts, four 1/4" Flat Washers, two 1/4" Lock Washers, and two 1/4 - 20 Hex Bolts as illustrated.



STEP 8

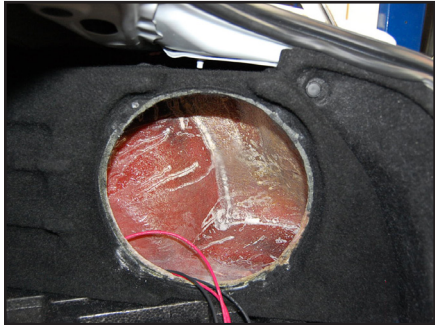
Pictured is the assembly secured to the metal brace.

Note: The 3/8" Fender Washer isn't shown in this image.



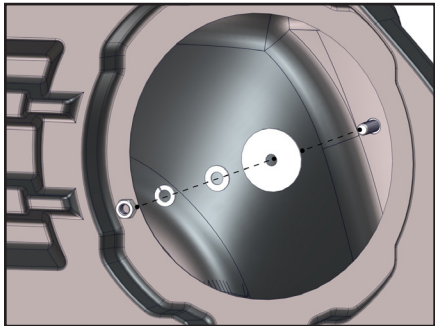
STEP 9

Reinstall the trunk liner, allowing the 3/8 - 16 x 2" Bolt to pass through the hole cut in **Step 4**.



STEP 10

Connect speaker cable to the terminal cup on the Stealthbox® and place the enclosure back into position, allowing the 3/8 - 16 x 2" Bolt to pass through the hole in the back of the enclosure.



STEP 11

Slide the other 3/8" Fender Washer, a 3/8" Flat Washer, a 3/8" Lock Washer, and a 3/8 - 16 Hex Nut over the 3/8 - 16 x 2" Bolt, and firmly tighten.



STEP 12

Reinstall the subwoofer.

CONGRATULATIONS!

You have completed the installation for this model. Enjoy your new Stealthbox®!



MID/HIGH FREQUENCY DRIVER FITMENT

A variety of JL Audio coaxial and component systems will fit in the factory speaker locations of your vehicle.

Front Speaker Size / Location: 6-1/2"- Front Doors
 Fits JL Audio Models: C1-650x, C1-650, C2-650x, C2-650, C3-650, C5-650x, C5-650, & ZR570-CSi



Rear Speaker Size / Location: 3-1/2"- Rear Quarter Panels
 Fits JL Audio Models: C2-350x

JL AUDIO®

Ahead of the Curve™

(954) 443-1100

www.jlaudio.com

All specifications are subject to change without notice. "JL Audio" and the JL Audio logo, "Stealthbox" and the Stealthbox logo are registered trademarks of JL Audio, Inc. "Ahead of the Curve" and its respective logo is a trademark of JL Audio, Inc.
 JLA-SKU# 011353 10.31.2017 • Printed in USA • ©2016 JL Audio, Inc.
 For more detailed information please visit us online at www.jlaudio.com.

