



Ahead of the Curve®



## Stealthbox®

INSTALLATION GUIDE  
for the

**SB-N-TTNCRW2G/10TW3**

**SKU# 94699**

**2016-Up Nissan Titan Crew Cab Trucks**

**Enclosure Type:** Sealed

**Driver Type:** 10TW3-D8

**Nominal Impedance:** 2 ohms

**Continuous Power Handling:** 800 watts (RMS method)

SB-N-TTNCRW2G/10TW3 INSTR\_SKU# 011574

### ! IMPORTANT

- Installation requires appropriate tools and safety equipment. Professional installation is recommended.
- If you prefer to perform your own installation, please read this installation guide completely before beginning.
- Before cutting or drilling, check for potential obstacles behind mounting surfaces.
- Mount this product securely to prevent damage or injury in severe conditions.

INSTALLATION  
DIFFICULTY:

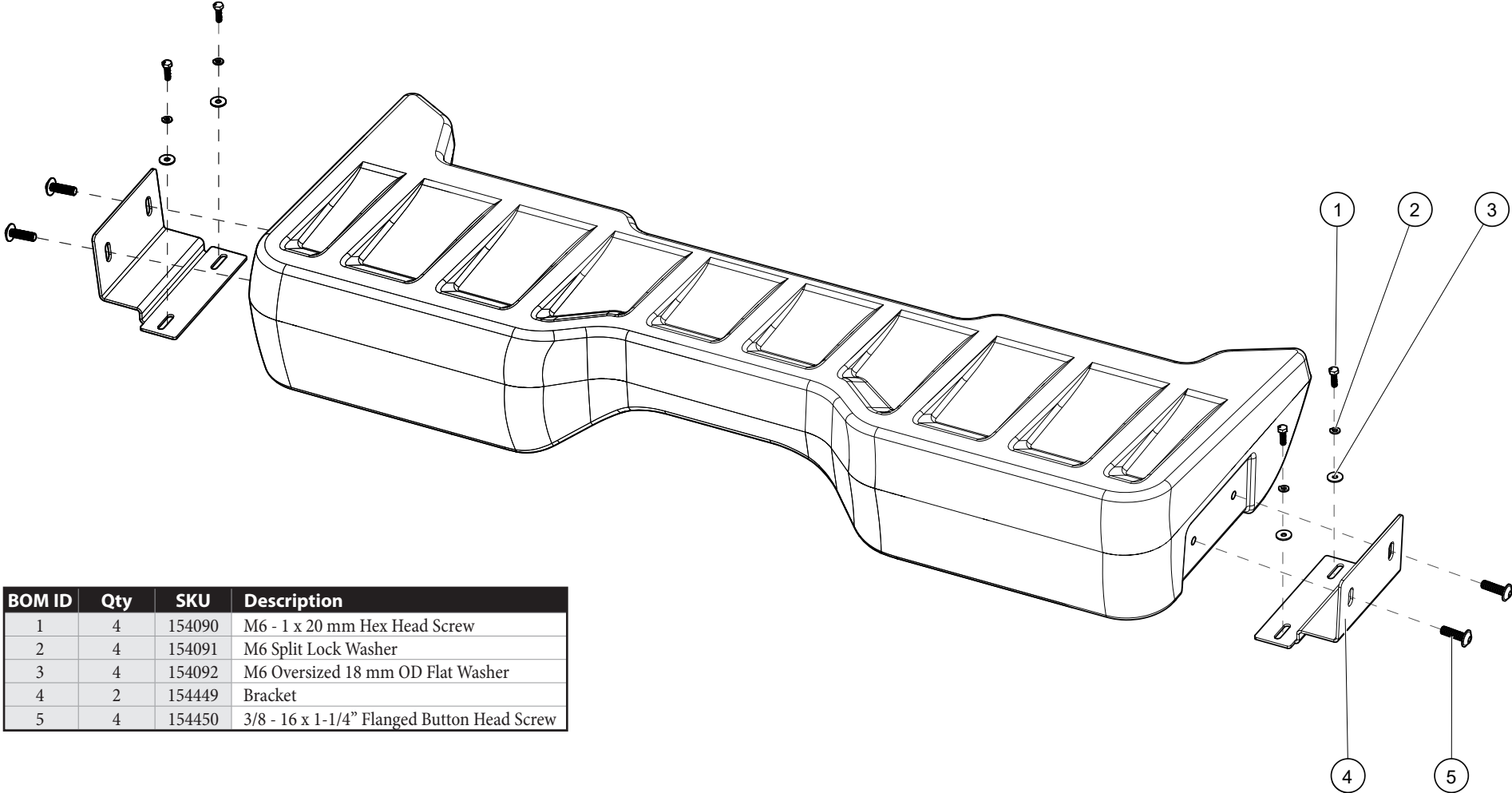
1 OUT OF 5

ESTIMATED TIME:  
1 HOUR



Continued on Next Page

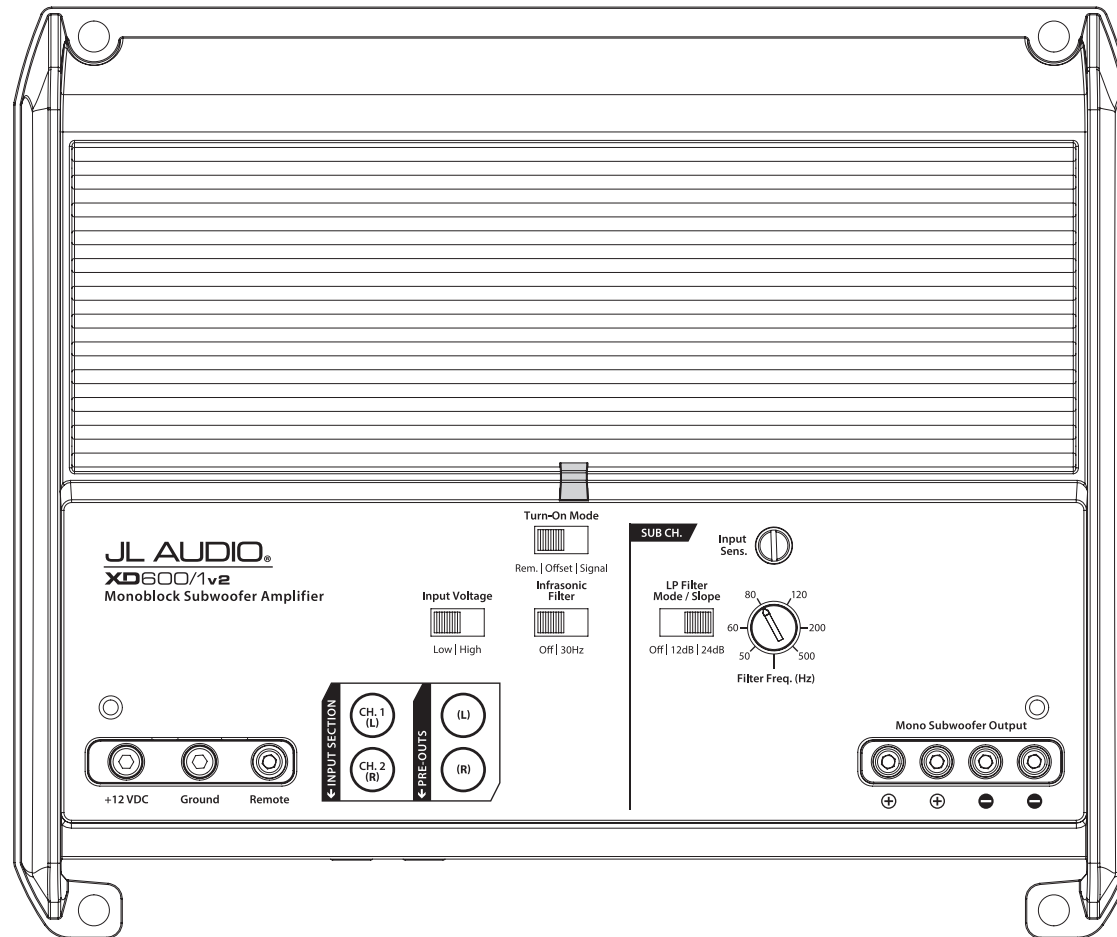
**INCLUDED HARDWARE**



BOM ID	Qty	SKU	Description
1	4	154090	M6 - 1 x 20 mm Hex Head Screw
2	4	154091	M6 Split Lock Washer
3	4	154092	M6 Oversized 18 mm OD Flat Washer
4	2	154449	Bracket
5	4	154450	3/8 - 16 x 1-1/4" Flanged Button Head Screw

## POWER RECOMMENDATION

JL Audio recommends high quality amplifiers such as the JL Audio XD600/1v2. The diagram below shows the recommended crossover settings for the XD600/1v2. For a detailed description of the amplifier settings, consult the owner's manual for the amplifier. If another amplifier is being used, please reference this illustration and use similar settings on that amplifier.



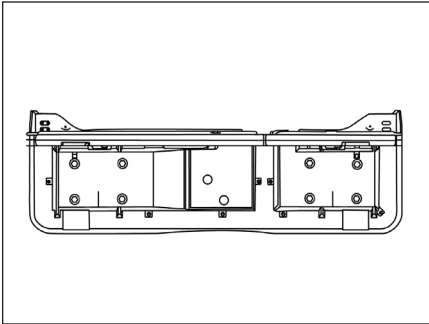
## CONNECTIONS

Using quality power, signal, and speaker wire is essential in ensuring the performance of your Stealthbox®. JL Audio recommends using a 4 AWG power kit such as the XD-PCS4-1B for your Stealthbox® amplifier. Other kits are available should you be using more than one amplifier. Signal wire such as the JL Audio Premium Audio Interconnect Cables should be used to provide signal for both channels of the amplifier. JL Audio recommends using 12 AWG speaker wire for subwoofers such as our XC-BCS12-25.



**STEP 1**

Empty the rear seat area. Fold the rear seat bottom cushions up.



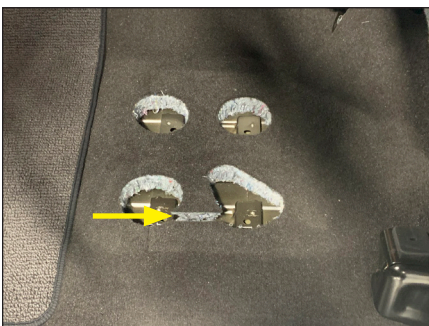
**STEP 2**

Open the lid of the rear seat storage box and remove all factory bolts that attach it to the vehicle.



**STEP 3**

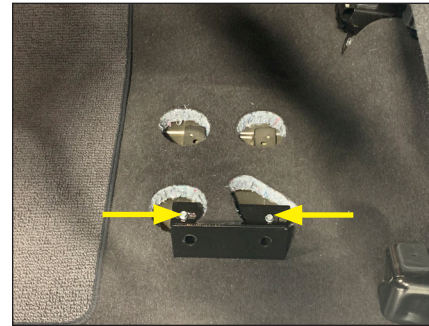
Remove the rear seat storage box from the vehicle.



**STEP 4**

Use a blade to carefully cut the factory carpet and padding as shown in the image.

Repeat on the opposite, passenger side of the vehicle.



**STEP 5**

Insert a provided Bracket through the cut opening in the carpet on the driver's side.

Create two screw assemblies by sliding a supplied M6 Split Lock Washer and M6 Oversized 18 mm OD Flat Washer onto a M6 - 1 x 20 mm Hex Head Screw. Pass the two screw assemblies through the bottom of the Bracket, aligning them to the factory bolt holes and loosely tighten.



**STEP 6**

Repeat **Step 5** on the opposite, passenger side of the vehicle.



**STEP 7**

Carefully place the Stealthbox® into the vehicle and align the two brackets to the threaded screw holes on the driver and passenger sides of the enclosure.



**STEP 8**

After aligning the Brackets, carefully flip the Stealthbox® towards the front of the vehicle to expose the screw assemblies that were loosely tightened into the bottom of the Brackets in **Step 5** and **Step 6**.

Fully tighten the screw assemblies.



**STEP 9**

Route the speaker cable from the amplifier to the Stealthbox®. Connect the speaker cable to the Stealthbox® enclosure's terminal cup.

Carefully flip the enclosure down. Install four supplied 3/8 - 16 x 1-1/4" Flanged Button Head Screws to attach both driver and passenger side Brackets to the threaded inserts of the Stealthbox® and fully tighten.



**STEP 10**

Fold the rear seat bottom cushions down.

**CONGRATULATIONS!**

You have completed the installation for this model! Enjoy your new Stealthbox®!



**MID/HIGH FREQUENCY DRIVER FITMENT**

A variety of JL Audio coaxial and component systems will fit in the factory speaker locations of your vehicle.

Location / OEM Speaker Size	Suggested JL Audio Speaker Models	
	Coaxial Models	Component Models
Front Doors / 6 x 9-inch	C1-690x <sup>(1)</sup> , C1-690tx <sup>(1)</sup> , C2-690tx <sup>(1)</sup> C2-650x <sup>(1)</sup>	C1-690 <sup>(1)</sup> , C1-650 <sup>(1)</sup> , C2-650 <sup>(1)</sup> , C3-650 <sup>(1)</sup> , C7-650cw <sup>(1,2)</sup>
Rear Doors / 6.5-inch	C1-650x, C2-650x	C1-650, C2-650, C3-650, C7-650cw <sup>(2)</sup>

1 - Installation may require adaptor, 2 - Component woofer only

**JL AUDIO** | How we play.®    

(954) 443-1100

[www.jlaudio.com](http://www.jlaudio.com)

All specifications are subject to change without notice. "JL Audio" and "How we play" are registered trademarks of JL Audio, Inc. "Ahead of the Curve" and its respective logo are trademarks of JL Audio, Inc.

Printed in USA • ©2022 JL Audio, Inc. • For more detailed information please visit us online at [www.jlaudio.com](http://www.jlaudio.com).

JLA-SKU# 011574 • ver. 9.13.22 • 10369 NORTH COMMERCE PARKWAY • MIRAMAR, FLORIDA • 33025 • USA



\*011574\*