

# Stealthbox®

INSTALLATION GUIDE  
for the  
**SB-N-370/10W3v3**  
SKU# 94480  
2009 & Up Nissan 370Z



*Thank you for choosing a JL Audio Stealthbox® for your automotive sound system. With proper installation, your new vehicle-specific enclosed subwoofer system will deliver years of listening pleasure.*

*We strongly recommend that you have your new Stealthbox® installed by your authorized JL Audio dealer. The installation professionals employed by your dealer have the necessary tools and experience to disassemble and reassemble your vehicle properly. Also, keep in mind that your warranty coverage extends to 2 years if your system is installed or approved by your authorized JL Audio dealer. If you prefer to perform your own installation, please read this installation guide completely before beginning the process.*

**JL AUDIO®**  
Ahead of the Curve™

## ! IMPORTANT

If you choose to perform the installation yourself, it is absolutely vital that the Stealthbox® be properly mounted to the vehicle according to these instructions. Failure to mount the enclosure properly presents two problems:

- 1) The sub-bass performance will suffer due to the movement of the enclosure caused by the force exerted by the woofer(s).
- 2) A loose enclosure presents a serious safety hazard in the event of a collision or sudden deceleration.

## INSTALLATION DIFFICULTY:

1 OUT OF 5

ESTIMATED TIME:  
1 HOUR



### STEP 1

Empty out the trunk of the car so that you have a clean area to work in.



### STEP 2

Lift out the rear carpet.

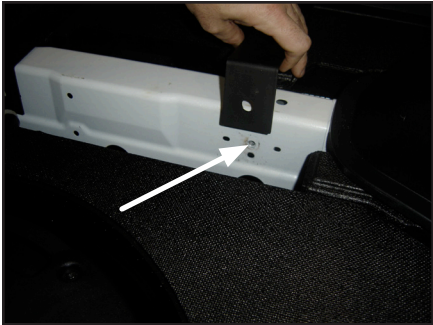


### STEP 3

On each of the two custom brackets, install the Speed Nuts as shown.



**STEP 4**  
The "hooked end" of each of the Custom Brackets hooks onto the bottom edge of the plastic trim along the front of the hatch area of the car as shown.



**STEP 5**  
Once the brackets are installed, align them with the factory installed threaded bosses as indicated.



**STEP 6**  
Secure the Custom Brackets with the supplied Hex Head Bolt, Split Lock Washer and Flat Washer, tighten all fasteners.



**STEP 7**  
Install Allen Head Stud into Speed Nut installed in **STEP 3**



**STEP 8**  
With both Allen Head Studs installed, put the carpet for the rear area back into the car.



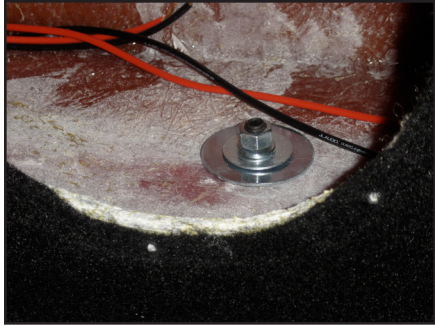
**STEP 9**  
Locate the two studs by pressing down on the carpet while making sure that carpet remains centered.



**STEP 10**  
Make two small "x" cuts where the Allen Head Studs are so that they will come up through the carpet.



**STEP 11**  
With the woofers removed, install the Stealthbox®, having the Allen Head Studs come up through the bottom of the enclosure.



**STEP 12**

Secure the Stealthbox® to the vehicle using the supplied Hex Nut, Split Lock Washer, Flat Washer and Fender Washer on each Allen Head Stud as shown. Re-install the woofers in the Stealthbox®



**CONGRATULATIONS!**

You have completed the installation for this model!

Enjoy your new Stealthbox®!

Please refer to the Power Recommendation section for an amplifier recommendation and basic set-up help.

**INCLUDED HARDWARE**

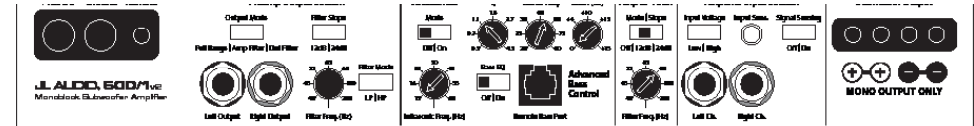
- 2) Custom Brackets
- 2) 5/16" Split Lock Washer
- 2) 3/8-16 x 2-14" Allen Head Stud
- 2) 3/8-16 Hex Nut
- 2) 3/8 Flat Washer
- 2) 5/16 Hex Head Bolt
- 2) 5/16 Flat Washer
- 2) 3/8-16 Speed Nut
- 2) 3/8 Split Lock Washer
- 2) 3/8 Fender Washer

**SPECIFICATIONS**

Enclosure Type: Acoustic Suspension (sealed)  
 Driver Type: 10W3v3-4  
 Nominal Impedance: 2 Ω  
 Continuous Power Handling: 1000 Watts

**POWER RECOMMENDATION**

JL Audio recommends high quality amplifiers such as the JL Audio 600/1v3. The diagram below shows the recommended crossover, infrasonic filter and equalizer settings for the 600/1v3. If another amplifier is being used, please reference this illustration and use similar settings on that amplifier.



All JL Audio amplifiers are very versatile audio components. Please consult the owner's manual for even more detailed information about installing and tuning your amplifier.

**CONNECTIONS**

Using quality power, signal and speaker wire is essential in ensuring the performance of your Stealthbox®. JL Audio recommends using a 4 AWG power kit such as the XD-PCS4-1B for your Stealthbox® amplifier, other kits are available should you be using more than one amplifier. Signal wire such as the JL Audio Premium Audio Interconnect Cables should be used that will provide signal for both channels of the amplifier. JL Audio recommends using 12AWG speaker wire for subwoofers such as our XD-BCS12-25.

**MID/HIGH FREQUENCY DRIVER FITMENT**

A variety of JL Audio coaxial and component systems will fit in the factory speaker locations of you vehicle.

- Front Speaker Size / Front Doors
- Fits JL Audio Models: TR650-CSi, TR650-CXi, C2-650x, C2-650, C3-650, C5-650, C5-650x, & ZR650-CSi
- Rear Speaker Size / Location: 6.5-inch / Rear Doors
- Fits JL Audio Models: TR650-CSi, TR650-CXi, C2-650x, C2-650, C3-650, C5-650, C5-650x, & ZR650-CSi



**JL AUDIO®**

*Ahead of the Curve™*

(954) 443-1100 [www.jlaudio.com](http://www.jlaudio.com)

All specifications are subject to change without notice. "JL Audio" and the JL Audio logo, "Stealthbox" and the Stealthbox logo are registered trademarks of JL Audio, Inc. "Ahead of the Curve" and its respective logo is a trademark of JL Audio, Inc.  
 JLA-SKU# 011306 09.20.2016 • Printed in USA • ©2016 JL Audio, Inc.  
 For more detailed information please visit us online at [www.jlaudio.com](http://www.jlaudio.com).

