

# Stealthbox®

## INSTALLATION GUIDE

for the

### SB-N-350/10W3v2

(2003-Up 350Z, Will not fit the 350z Roadster, Infiniti G35 Coupe & Sedans)



This Stealthbox is a product which requires professional installation skills and tools.

Please read this installation guide thoroughly before beginning the project. It will guide you step by step through the installation. Several of the steps in this process may require two people to accomplish.

It is absolutely vital that the enclosure be properly mounted to the vehicle according to these instructions. Failure to mount the enclosure properly presents two problems: 1) The sub-bass performance will suffer due to the movement of the enclosure caused by the force exerted by the woofer(s) and 2) A loose enclosure presents a serious safety hazard in the event of a collision or sudden deceleration.

*Please enjoy your JL Audio Stealthbox responsibly.*

**JL AUDIO®**  
*Ahead of the Curve™*

[www.jlaudio.com](http://www.jlaudio.com)

**START  
HERE**



**STEP 1:** Remove all contents from center console, rear cargo area, rear glove box compartments, lastly slide and tilt the seats to the front of the car.



**STEP 3:** Remove the driver's side and passenger's side door sill panels.

**\*Carefully pulling directly upward.\***



**STEP 4:** Remove the Philip head screws, that are found on both driver's side and passenger's side of the console.



**STEP 5:** Remove the two Philip head screws that have been exposed by the removal of the ashtray.



**STEP 6:** Loosen the shifter trim panel by pulling directly up. Pull the panel away from the console.

Manual transmission shifter shown in picture, automatic shifter removal maybe slightly different, then shown.

**\*Careful not to damage the shifter or scratch the dash panel.\***

**Continued on Next Page →**

Cont.  
From  
Previous  
Page



**STEP 7:** Disconnect the white wiring plug at the rear of the A/C controls.



**STEP 8:** With the shifter trim panel moved to one side. Remove the pair of Philip head screws at the front edge of the console.



**STEP 9:** Engage the emergency brake, by pulling up on the handle.



**STEP 10:** Lift at the rear of the console and carefully pull unit over the emergency hand brake arm.



**STEP 11:** Disconnect the wiring harness at the plug located under the center console.



**STEP 12:** Carefully guide the shifter boot trim panel through the front opening in the console. This will allow for full removal of the center console.

**\*Careful not to damage the shifter boot or scratch the dash panel.\***



**STEP 13:** Remove the center console, out of the vehicle.



**STEP 14:** Remove the rear bulkhead front panel, by carefully pulling towards the front of the vehicle around the glove box.

Cont.  
From  
Previous  
Page



**STEP 15:** Remove the pair of Philip head screws securing the passenger side glove box's door latch.

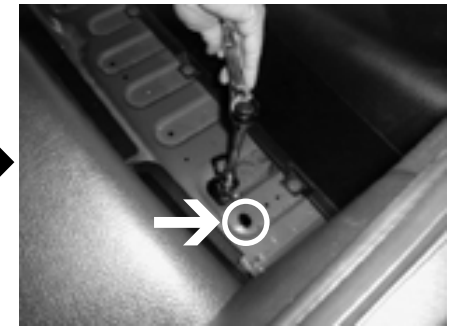
Repeat this STEP for the driver's side, if equipped with the glove box. Remove the factory woofer on the driver's side, if equipped.



**STEP 16:** Remove the pair of 10mm head bolts at the rear of the glove box.



**STEP 17:** Remove the numerous 10mm head bolts securing the front edge of the glove box liner.



**STEP 18:** Pull back the carpet in the front section of the cargo area to reveal the metal floor. Remove the child seat anchor hooks, reinstall factory bolts without hook. Locate the existing holes (behind the driver's side and passenger's side seat), to be used to mount the Stealthbox. Identified by the white circle.



**STEP 19:** Cut the carpet to create a flap that can be folded to allow access to the mounting holes.



**STEP 20:** If the vehicle is so equipped, fold back floor mat as shown to access the mounting bolts.

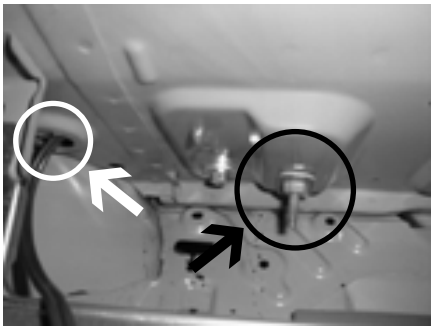


**STEP 21:** Thread in the supplied pair of socket cup set screws. Leaving about 1.5" exposed.



**STEP 22:** At this time, attach the speaker wire from the amp to the Stealthbox's terminal.  
**\*Check for proper operation of the woofers.\***

Cont. From Previous Page



**CONGRATULATIONS!  
INSTALL COMPLETE.**

**STEP 24:** Set the Stealthbox into position in the vehicle. Placing the socket cup set screws through the cut carpet and existing holes from **STEP 19 & 20**.

Route the woofers' wiring behind the enclosure to the large hole at the far end of the passenger side cargo area. Identified by the white circle.

Route the wiring down through this hole to the glove box cavity for the connection to an amplifier.

**STEP 25:** The socket cup set screws are protruding into the glove box/factory woofer area. Place the supplied fender washer, lock washer and hex nut onto each socket cup set screws. Identified by the black circle in **STEP 24**.

If needed, expose more length of the socket cup set screws. Secure tightly.

**\*Make sure the Stealthbox is centered with the strut tower brace.\***

**STEP 26:** Reassemble the vehicle's panels in reverse order of disassembly.

**Included Hardware:**

- 2) 3/8" Split Lock Washers
- 2) 3/8" Flat Washers
- 2) 3/8" x 1-1/4" Fender Washers
- 2) 3/8" x 2-1/4" Socket Cup Set Screws
- 2) 3/8" Hex Nuts

**Specifications:**

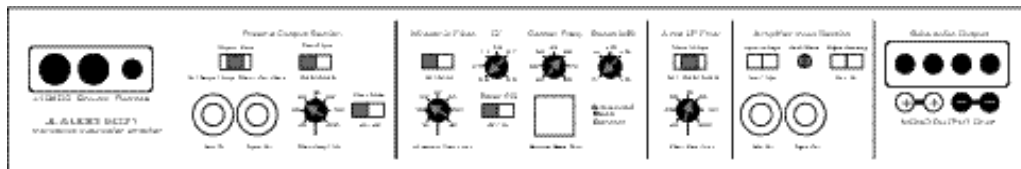
**Enclosure Type:** Acoustical Suspension(Sealed)

**Driver Type:** 2) 10W3v2-D4

**Nominal Impedance:** 4Ω

**Cont. Power Handling:** 600Watts

JL Audio recommends using a high quality amplifier such as the JL Audio 500/1. The diagram below shows the recommended crossover, infrasonic filter and equalizer settings for the 500/1 when being used to power your Stealthbox®.



The JL Audio 500/1 is a very versatile audio component. Please consult the owner's manual for detailed information about installing and tuning this amplifier.

**Mid/High Frequency Driver Information:**

**Front Location Driver Size:**

6.5"

**Applicable JL Audio Products:**

XR, VR & TR650-CXi



**Rear Location Driver Size:**

6.5"

**Applicable JL Audio Products:**

XR, VR & TR650-CXi

