



Ahead of the Curve®



# Stealthbox®

INSTALLATION GUIDE  
for the

**SB-GM-C7CP1/10TW3**

**SKU# 94605**

**2014-2019 Corvette C7 Stingray**

**Enclosure Type:** Sealed

**Driver Type:** 10TW3-D4

**Nominal Impedance:** 2 ohms

**Continuous Power Handling:** 400 watts (RMS method)

## ! IMPORTANT

If you choose to perform the installation yourself, it is absolutely vital that the Stealthbox® be properly mounted to the vehicle according to these instructions. Failure to mount the enclosure properly presents two problems:

- 1) The sub-bass performance will suffer due to the movement of the enclosure caused by the force exerted by the woofer(s).
- 2) A loose enclosure presents a serious safety hazard in the event of a collision or sudden deceleration.

INSTALLATION  
DIFFICULTY:

1 OUT OF 5

ESTIMATED TIME:  
1/2 HOUR

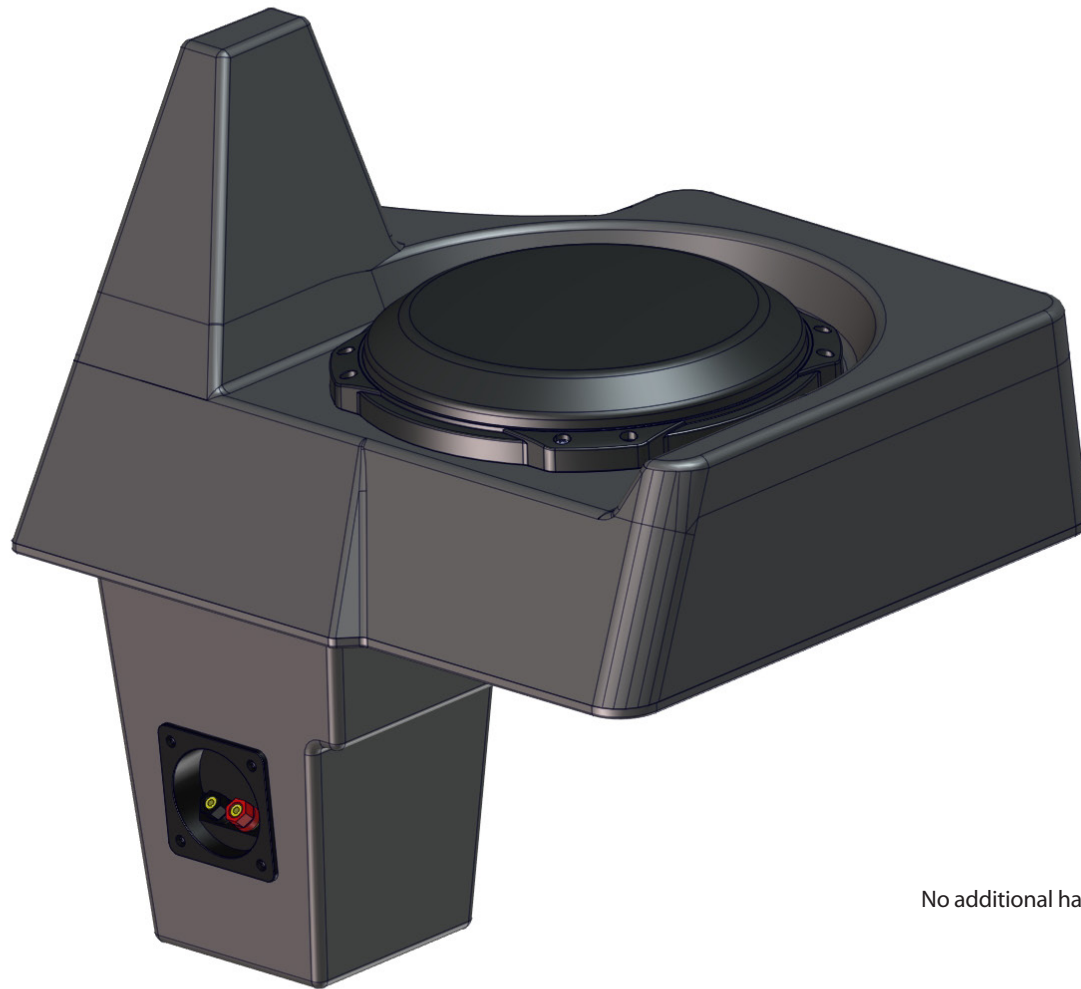


*Thank you for choosing a JL Audio Stealthbox® for your automotive sound system. With proper installation, your new vehicle-specific enclosed subwoofer system will deliver years of listening pleasure.*

*We strongly recommend that you have your new Stealthbox® installed by your authorized JL Audio dealer. The installation professionals employed by your dealer have the necessary tools and experience to disassemble and reassemble your vehicle properly. If you prefer to perform your own installation, please read this installation guide completely before beginning the process.*

**INCLUDED HARDWARE**

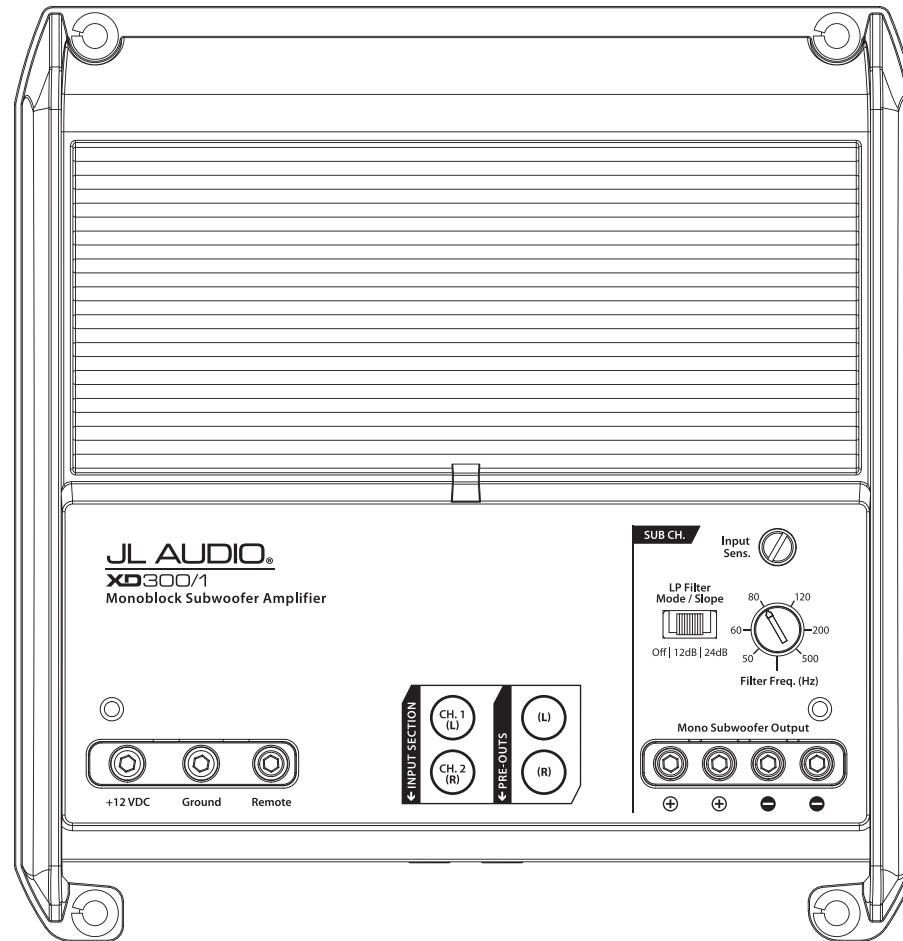
---



No additional hardware required.

## POWER RECOMMENDATION

JL Audio recommends high quality amplifiers such as the JL Audio XD300/1v2. The diagram below shows the recommended crossover settings for the XD300/1v2. For a detailed description of the amplifier settings, consult the owner's manual for the amplifier. If another amplifier is being used, please reference this illustration and use similar settings on that amplifier.



## CONNECTIONS

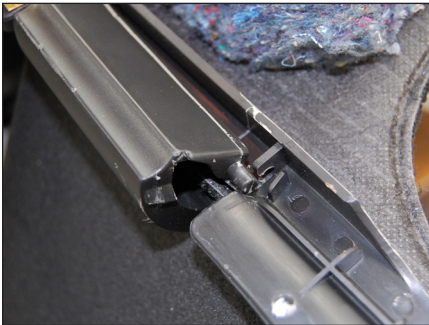
Using quality power, signal, and speaker wire is essential in ensuring the performance of your Stealthbox®. JL Audio recommends using a 4 AWG power kit such as the XD-PCS4-1B for your Stealthbox® amplifier. Other kits are available should you be using more than one amplifier. Signal wire such as the JL Audio Premium Audio Interconnect Cables should be used to provide signal for both channels of the amplifier. JL Audio recommends using 12AWG speaker wire for subwoofers such as our XC-BCS12-25.



**STEP 1**  
Empty out the trunk of the vehicle.



**STEP 2**  
Lift up the cargo floor on the driver's side.



**STEP 3**  
From the underside of the cargo floor, carefully unclip and remove the storage compartment door.



**STEP 4**  
Reinstall the cargo floor. Connect speaker cable to the terminal cup on the enclosure, and place the Stealthbox® into position as shown. Route the speaker cable as necessary.

Closing the cargo hatch will lock the Stealthbox® into position.

**CONGRATULATIONS!**

You have completed the installation for this model! Enjoy your new Stealthbox®!



**MID/HIGH FREQUENCY DRIVER FITMENT**

A variety of JL Audio coaxial and component systems will fit in the factory speaker locations of your vehicle.

Front Speaker Size / Location: 10"- Front Doors  
Fits JL Audio Models: C1-650, C1-650x, C2-650, C2-650x, C3-650, C5-650, C5-650x, & C7-650cw

Rear Speaker Size / Location: 6-1/2"- Side Panels  
Fits JL Audio Models: C1-650, C1-650x, C2-650, C2-650x, C3-650, C5-650, C5-650x, & C7-650cw



JL AUDIO® | How we play.™    

(954) 443-1100

[www.jlaudio.com](http://www.jlaudio.com)

All specifications are subject to change without notice. "JL Audio" and the JL Audio logo, and "Stealthbox" and the Stealthbox logo are registered trademarks of JL Audio, Inc. "Ahead of the Curve", its respective logo, and "How we play" are trademarks of JL Audio, Inc.  
Printed in USA • ©2019 JL Audio, Inc. • For more detailed information please visit us online at [www.jlaudio.com](http://www.jlaudio.com).

JLA-SKU# 011384 • ver. 09.30.2019 • 10369 NORTH COMMERCE PARKWAY • MIRAMAR, FLORIDA • 33025 • USA