

# Stealthbox®

## INSTALLATION GUIDE for the

### SB-F-EXPDEL/10W3v3

SKU# 94343

2007 - 2017 Ford Expedition EL (long wheel base)



*Thank you for choosing a JL Audio Stealthbox® for your automotive sound system. With proper installation, your new vehicle-specific enclosed subwoofer system will deliver years of listening pleasure.*

*We strongly recommend that you have your new Stealthbox® installed by your authorized JL Audio dealer. The installation professionals employed by your dealer have the necessary tools and experience to disassemble and reassemble your vehicle properly. Also, keep in mind that your warranty coverage extends to 2 years if your system is installed or approved by your authorized JL Audio dealer. If you prefer to perform your own installation, please read this installation guide completely before beginning the process.*

**JL AUDIO®**  
*Ahead of the Curve™*

### ! IMPORTANT

If you choose to perform the installation yourself, it is absolutely vital that the Stealthbox® be properly mounted to the vehicle according to these instructions. Failure to mount the enclosure properly presents two problems:

- 1) The sub-bass performance will suffer due to the movement of the enclosure caused by the force exerted by the woofer(s).
- 2) A loose enclosure presents a serious safety hazard in the event of a collision or sudden deceleration.

### INSTALLATION DIFFICULTY:

**2** OUT OF 5

**ESTIMATED TIME:  
1-2 HOURS**



#### STEP 1

Collapse the third row seating.

Bring the lift tray to the up positions.

Remove the rear most storage cover.



#### STEP 2

Remove the front storage cover



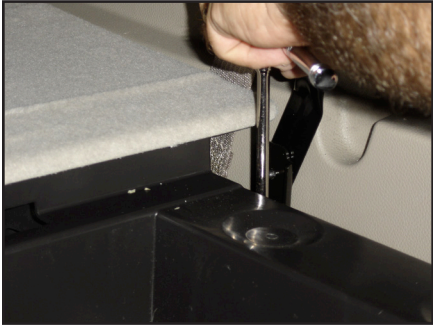
#### STEP 3

Remove the tailgate's lower sill plate.



**STEP 4**  
With an 8mm socket, remove the bolts that secure the plastic storage bins to the floor.

Remove the plastic storage bins from SUV.



**STEP 5**  
With an 8mm socket, remove the pair of bolts that secure the lift tray to the floor.

Remove the lift tray from SUV.



**STEP 6**  
Remove the access door from the driver's side rear cargo panel.

Unplug the power lift gate switch, from behind the side panel.



**STEP 7**  
Pop out the seat belt trim panel from the side panel.



**STEP 8**  
With a T-50 Torx socket, remove the bolt that secures the driver's side third row seat belt to the floor.



**STEP 9**  
With a T-50 Torx socket, remove the bolt that secures the driver's side third row seat belt to the ceiling.

Remove the seat belt mount from the ceiling.



**STEP 10**  
With a T-50 Torx socket, remove the bolt that secures the driver's side second row seat belt to the floor.



**STEP 11**  
With a T-50 Torx socket, remove the bolt that secures the driver's side second row seat belt to the C-pillar.





**STEP 12**

Pop out the circle cover that is located in the upper portion of the C-pillar plastic cover.

With an 8mm socket, remove the bolt.



**STEP 13**

Remove the upper C-pillar plastic cover.



**STEP 14**

Remove the driver's rear door sill plate.



**STEP 15**

Remove the tailgate's upper sill plate.

Remove the upper d-pillar plastic cover.



**STEP 16**

With an 8mm socket, remove the bolt that secures the side panel metal bracket to the floor.



**STEP 17**

Pull the rear portion of the side panel from location. Feed the third row seat belt through the opening of the side panel.



**STEP 18**

Pull the front portion of the side panel from location. Feed the second row seat belt through the opening of the side panel.

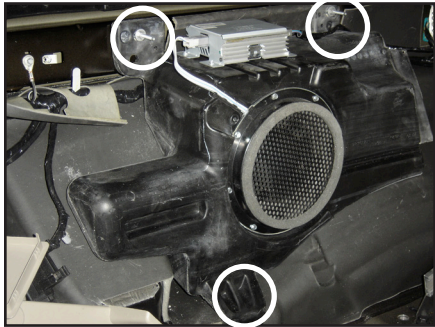


**STEP 19**

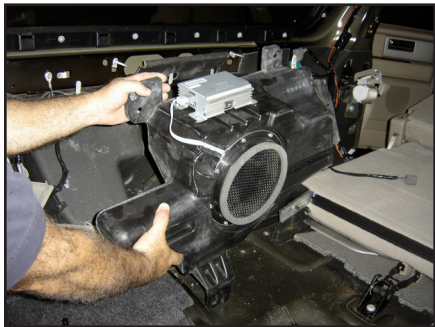
Remove the side panel from the SUV.



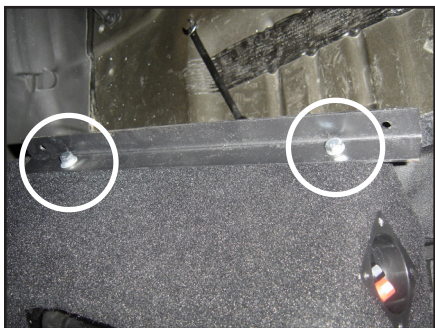
**STEP 20**  
Remove the plug from the factory amplifier.



**STEP 21**  
With 10mm socket, remove the two nuts and one bolt that secure the plastic woofer enclosure to the SUV.



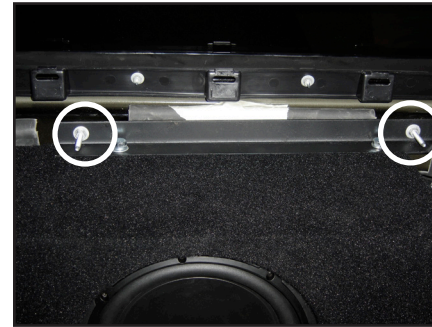
**STEP 22**  
Remove the woofer system from the SUV.



**STEP 23**  
Place a supplied 3/8-inch lock washer then 3/8-inch flat washer onto each supplied 3/8-inch bolt.  
  
Use two of these bolt assemblies to secure the supplied L-bracket to the top of the Stealthbox®.

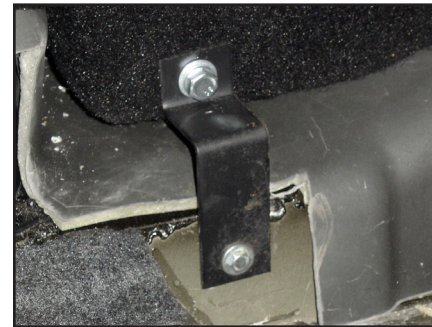


**STEP 24**  
Use the last bolt assembly to secure the supplied Z-bracket onto the bottom front of the Stealthbox®, as pictured.



**STEP 25**  
Place the Stealthbox® into the mounting area. Guide the two factory studs through the two holes in the L-bracket.

Secure the top of the Stealthbox® using the factory nuts.



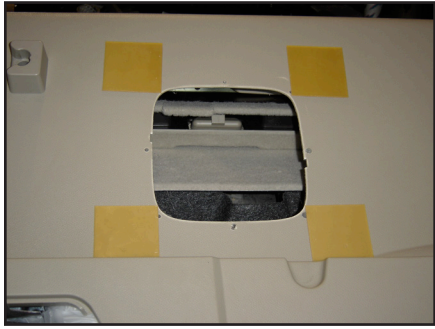
**STEP 26**  
Secure the bottom of the Stealthbox® using the factory bolt.



**STEP 27**  
Run speaker wire from the amplifier location to the Stealthbox® location.

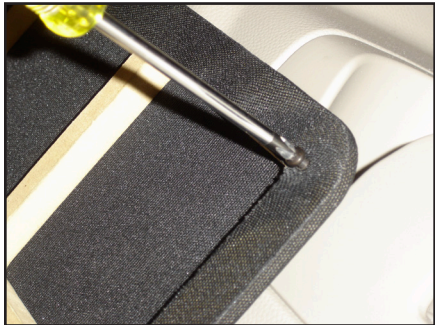
Double check the woofer for proper operation.



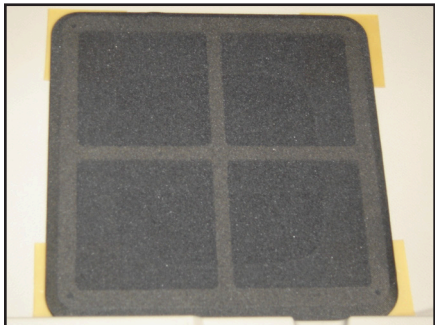
**STEP 28**

From the back side of the removed side panel. Grind off the plastic weld that holds the factory woofer grilles onto the side panel. Remove the grille from the panel.

From the front side of the removed side panel. Place the supplied wax squares into positions, as pictured.

**STEP 29**

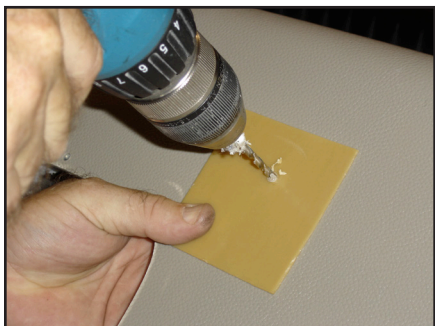
Mount each supplied Phillips head screw into each corner of the backside of the supplied grille, as pictured.

**STEP 30**

Position the grille assembly onto the wax squares, with the screw heads up against the wax squares.

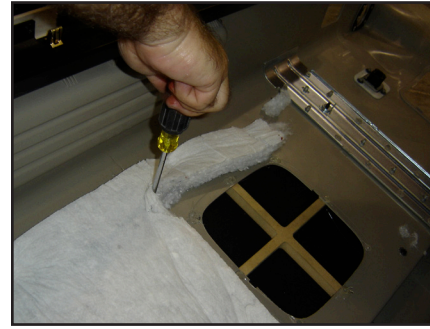
Firmly press onto each corner of the grille.

Remove each grille assembly carefully, leaving the wax squares in place. The head of the screws will leave an impression on each wax square.

**STEP 31**

With a drill and a 1/8-inch drill bit, drill through the impression made in each wax square and into the vehicle's side panel.

Remove the wax squares.

**STEP 32**

Remove the screws from the grille assembly. Place a supplied #8 washer onto each screw.

To secure the grille onto the front side of the side panel. The screws are to pass through from the back side of the side panel into the back side of the grille.

Do not over tighten the screws.

Place the side panel back into the SUV.

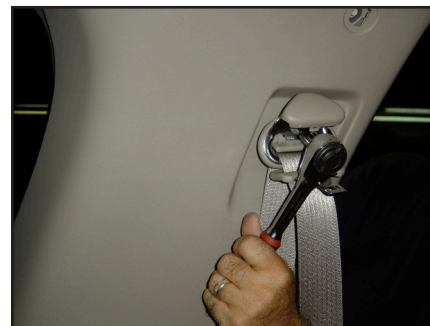
**STEP 33**

Feed the second and third row seat belts back through the side panel, from **STEPS 17 & 18**.

**STEP 34**

Reattach the wire harness to the power lift gate switch and access door from **STEP 6**.

Secure the side panel metal bracket to the floor, from **STEP 16**.

**STEP 35**

Place the cover back onto the C-pillar, from **STEP 13**.

Secure the bolt and replace the cover from **STEP 12**.

Secure the second row seat belt back onto the C-pillar and floor from, **STEPS 10 & 11**.



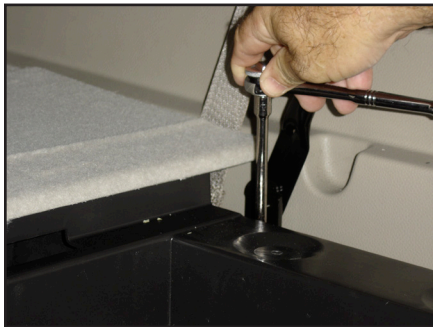
**STEP 36**  
Secure the third row seat belt to the ceiling and floor, from **STEPS 8 & 9**.

Snap in the seat belt trim panel, from **STEP 7**.

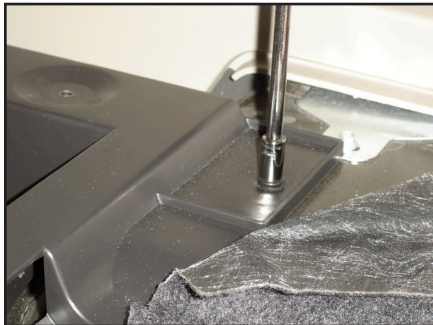
Replace the d-pillar cover, from **STEP 16**.

Replace the tailgate's upper sill plate, from **STEP 15**.

Replace the driver's rear door sill plate, from **STEP 14**.



**STEP 37**  
Secure the lift tray to the floor, from **STEP 5**.



**STEP 38**  
Replace the floor storage bins back into the SUV. Secure them to the floor, from **STEP 4**.

Replace the tailgate's lower sill plate back into the SUV, from **STEP 3**.

Replace the storage covers back into the SUV, from **STEPS 1 & 2**.



**CONGRATULATIONS**  
You have completed the installation for this model!

Please refer to the Power Recommendation section for an amplifier recommendation and basic set-up help.

**INCLUDED HARDWARE**

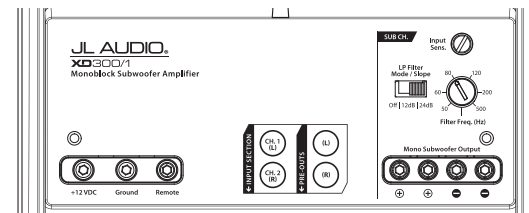
- |  |                                     |
|--|-------------------------------------|
| (3) 3/8-inch -16 x 1-inch Hex Tap Bolt | (4) 3/8-inch Flat Washer            |
| (1) L-bracket                          | (3) #8 SAE Flat Washer              |
| (1) Z-bracket                          | (4) #8-32 x 1/2-inch Pan Head Screw |
| (3) 3/8-inch Split lock Washer         | (1) 5/8-inch MDF Square Grille      |
| (4) 3-inch x 3-inch Wax Squares        |                                     |

**SPECIFICATIONS**

**Enclosure Type:** Acoustic Suspension (sealed)  
**Driver Type:** 10W3v3-2  
**Nominal Impedance:** 2 ohms mono  
**Continuous Power Handling:** 500 Watts

**POWER RECOMMENDATION**

JL Audio recommends using a high quality amplifier such as the JL Audio XD300/1v2. The diagram below shows the recommended crossover settings for the XD300/1v2 when being used to power your Stealthbox®.



The JL Audio XD300/1v2 is a very versatile audio component. Please consult the owner's manual for even more detailed information about installing and tuning this amplifier.

**MID/HIGH FREQUENCY DRIVER FITMENT**

A variety of JL Audio coaxial and component systems will fit in the factory speaker locations of you vehicle.

**Front Speaker Size / Location:** 5-inch x 7-inch / Front Doors  
**Fits JL Audio Models:** C5-570, C5-570x, C3-570, C2-570x, C1-570x

**Rear Speaker Size / Location:** 5-inch x 7-inch / Rear Door  
**Fits JL Audio Models:** C5-570, C5-570x, C3-570, C2-570x, & C1-570x



**JL AUDIO®**  
*Ahead of the Curve™*

(954) 443-1100

[www.jlaudio.com](http://www.jlaudio.com)

All specifications are subject to change without notice. "JL Audio" and the JL Audio logo, "Stealthbox" and the Stealthbox logo are registered trademarks of JL Audio, Inc. "Ahead of the Curve" and its respective logo is a trademark of JL Audio, Inc.  
JLA-SKU# 011237 12.01.2017 - Printed in USA - ©2016 JL Audio, Inc.  
For more detailed information please visit us online at [www.jlaudio.com](http://www.jlaudio.com).

