



Ahead of the Curve®



Stealthbox®

INSTALLATION GUIDE
for the

SB-F-EDG2G/10TW1

SKU# 94662

2015 & Up Ford Edge

Enclosure Type: Sealed

Driver Type: 10TW1-2

Nominal Impedance: 2 ohms

Continuous Power Handling: 300 watts (RMS method)

! IMPORTANT

If you choose to perform the installation yourself, it is absolutely vital that the Stealthbox® be properly mounted to the vehicle according to these instructions. Failure to mount the enclosure properly presents two problems:

- 1) The sub-bass performance will suffer due to the movement of the enclosure caused by the force exerted by the woofer(s).
- 2) A loose enclosure presents a serious safety hazard in the event of a collision or sudden deceleration.

INSTALLATION
DIFFICULTY:

3 OUT OF **5**

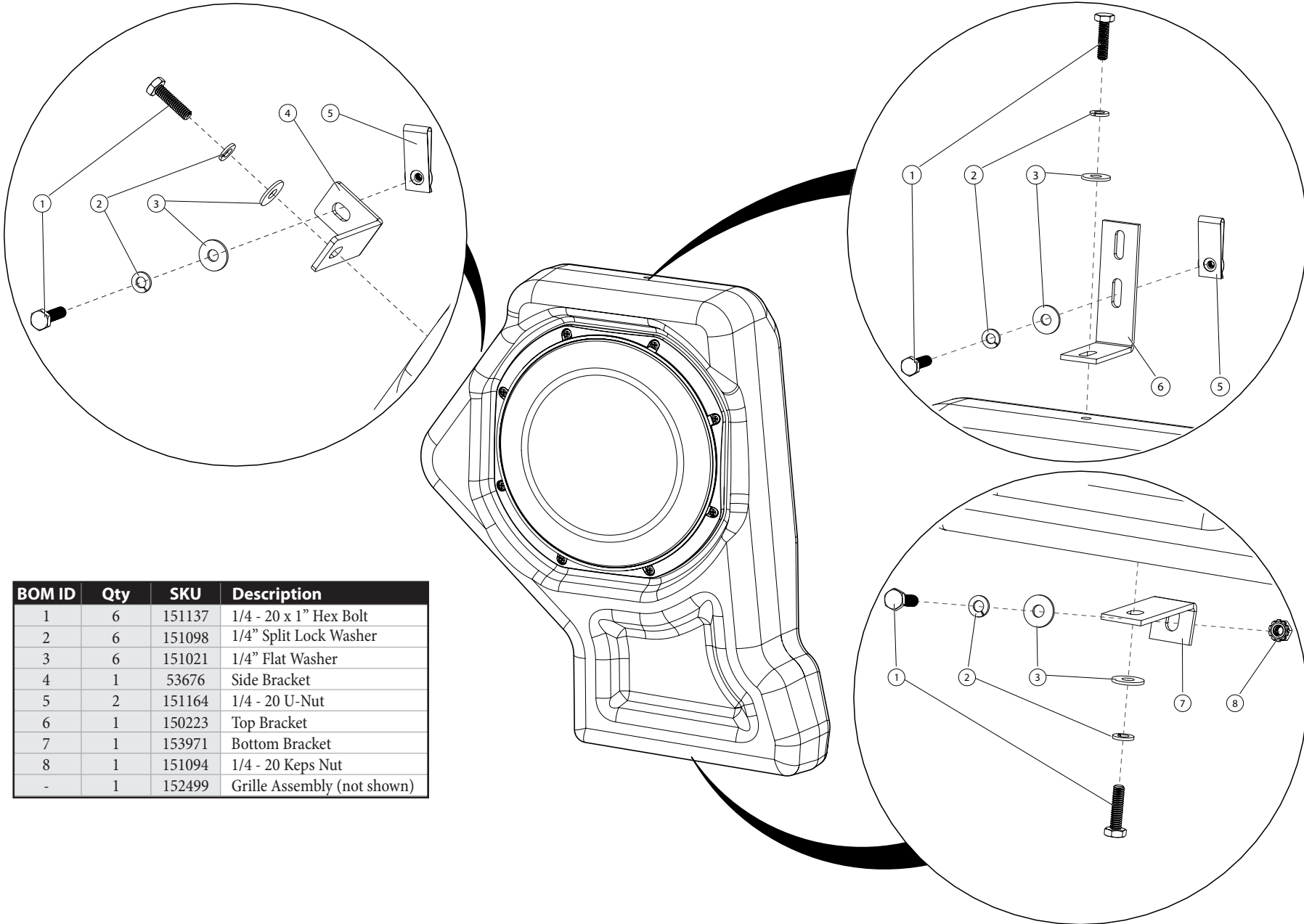
ESTIMATED TIME:
2-3 HOURS



Thank you for choosing a JL Audio Stealthbox® for your automotive sound system. With proper installation, your new vehicle-specific enclosed subwoofer system will deliver years of listening pleasure.

We strongly recommend that you have your new Stealthbox® installed by your authorized JL Audio dealer. The installation professionals employed by your dealer have the necessary tools and experience to disassemble and reassemble your vehicle properly. If you prefer to perform your own installation, please read this installation guide completely before beginning the process.

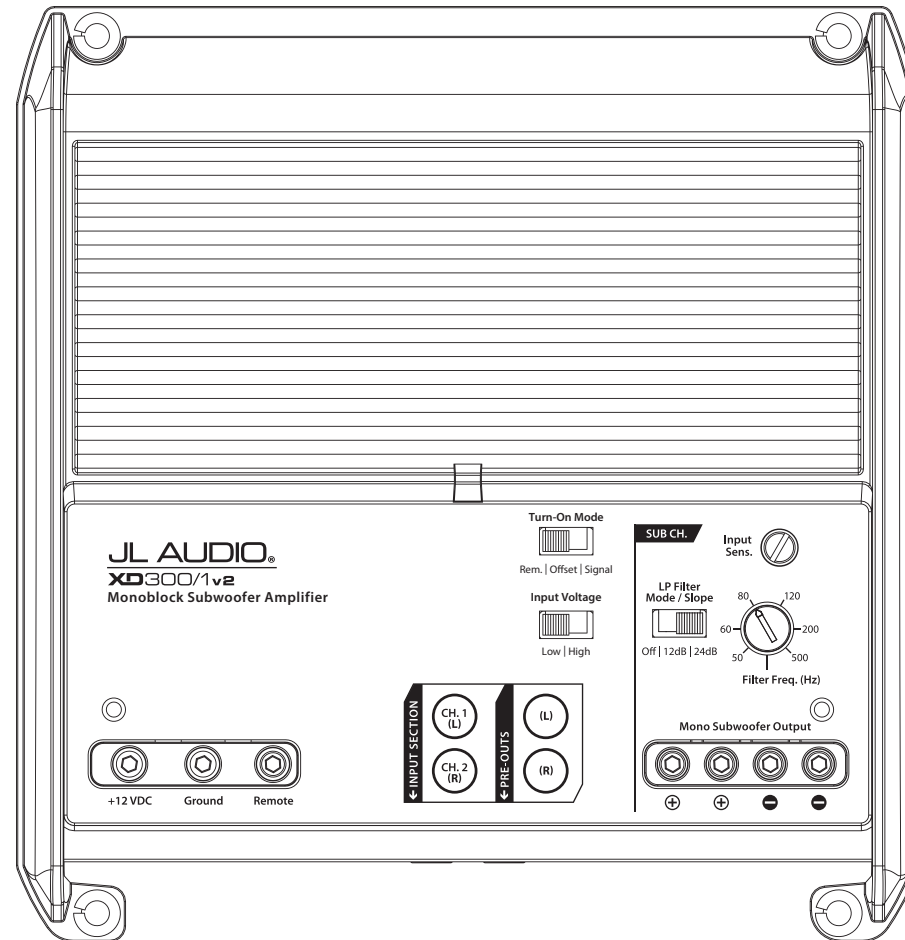
INCLUDED HARDWARE



BOM ID	Qty	SKU	Description
1	6	151137	1/4 - 20 x 1" Hex Bolt
2	6	151098	1/4" Split Lock Washer
3	6	151021	1/4" Flat Washer
4	1	53676	Side Bracket
5	2	151164	1/4 - 20 U-Nut
6	1	150223	Top Bracket
7	1	153971	Bottom Bracket
8	1	151094	1/4 - 20 Keps Nut
-	1	152499	Grille Assembly (not shown)

POWER RECOMMENDATION

JL Audio recommends high quality amplifiers such as the JL Audio XD300/1v2. The diagram below shows the recommended crossover settings for the XD300/1v2. For a detailed description of the amplifier settings, consult the owner's manual for the amplifier. If another amplifier is being used, please reference this illustration and use similar settings on that amplifier.



CONNECTIONS

Using quality power, signal, and speaker wire is essential in ensuring the performance of your Stealthbox®. JL Audio recommends using a 4 AWG power kit such as the XD-PCS4-1B for your Stealthbox® amplifier. Other kits are available should you be using more than one amplifier. Signal wire such as the JL Audio Premium Audio Interconnect Cables should be used to provide signal for both channels of the amplifier. JL Audio recommends using 12 AWG speaker wire for subwoofers such as our XC-BCS12-25.



STEP 1

Empty the cargo area, and fold down the rear seat on the passenger side.



STEP 2

Remove the cargo floor panel.



STEP 3

Remove the two foam storage inserts.



STEP 4

Carefully remove the clip from under each side of the cargo sill panel.



STEP 5

Remove the cargo sill panel.



STEP 6

Open the rear door on the passenger's side. Carefully unclip and remove the door sill panel.



STEP 7

Carefully unclip the cargo side panel. Unplug the cargo light from the backside of the panel, and remove the panel from the vehicle.



STEP 8

Pictured is the vehicle with the cargo side panel removed.



STEP 9

Note: **Steps 9-13** are for vehicles equipped with a factory subwoofer enclosure. For vehicles without a factory subwoofer enclosure, skip to **Step 14**.

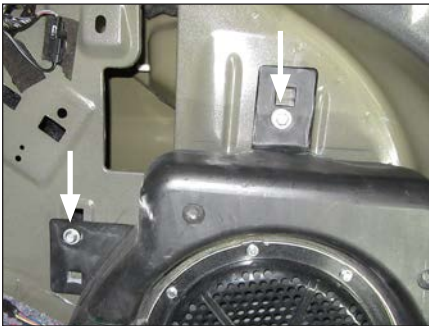
Disconnect the factory subwoofer.



STEP 10

Using a 10mm socket and wrench, remove the indicated factory nut at the bottom of the factory subwoofer enclosure.

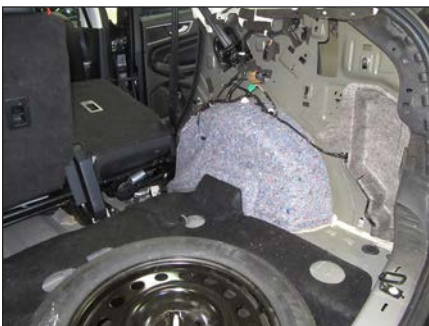
This will not be reinstalled.



STEP 11

Using a 10mm socket and wrench, remove the two indicated factory bolts from the top of the factory subwoofer enclosure.

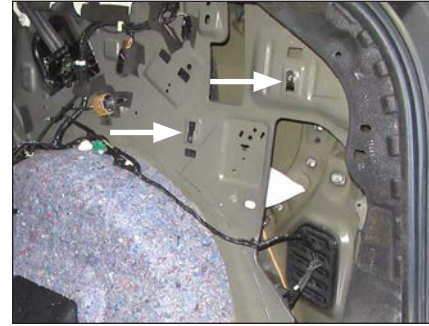
These will not be reinstalled.



STEP 12

Remove the factory subwoofer enclosure from the vehicle.

This will not be reinstalled.



STEP 13

Remove the molded jute panel from behind the factory subwoofer enclosure location.

Remove the two indicated factory U-nuts from the vehicle.

These will not be reinstalled.



STEP 14

Install a 1/4 - 20 U-Nut in each of the locations indicated in **Step 13**, as shown.



STEP 15

Remove the factory bolt from the lower subwoofer mounting location.

This will not be reinstalled.

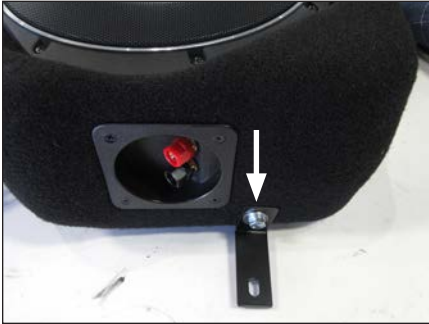
Measure 1/2" down from the factory hole, and mark the location. Using a 3/8" drill bit, carefully drill through the panel.



STEP 16

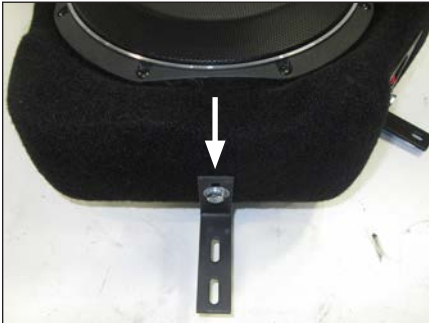
Align the hole in the short side of the Bottom Bracket with the hole drilled in the previous step.

Slide a 1/4" Split Lock Washer and a 1/4" Flat Lock Washer over a 1/4 - 20 x 1" Hex Bolt, and pass the assembly through the hole in the Bottom Bracket and through the drilled hole. From the back, thread a 1/4 - 20 Keps Nut over the 1/4 - 20 x 1" Hex Bolt. Align the Bottom Bracket as shown, and fully tighten.



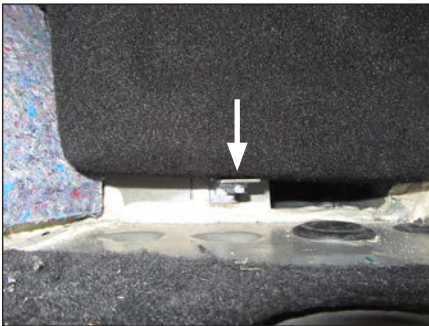
STEP 17

Align the hole in the short side of the Side Bracket with the threaded insert in the side of the enclosure. Slide a 1/4" Split Lock Washer and a 1/4" Flat Washer over a 1/4 - 20 x 1" Hex Bolt, pass the assembly through the hole in the Side Bracket, into the threaded insert, and hand tighten.



STEP 18

Align the hole in the short side of the Top Bracket with the threaded insert in the top of the enclosure. Slide a 1/4" Split Lock Washer and a 1/4" Flat Washer over a 1/4 - 20 x 1" Hex Bolt, pass the assembly through the hole in the Top Bracket, into the threaded insert, and hand tighten.



STEP 19

Place the Stealthbox into position in the vehicle. Align the slot in the Bottom Bracket, with the threaded insert in the bottom of the enclosure.

Slide a 1/4" Split Lock Washer and a 1/4" Flat Washer over a 1/4 - 20 x 1" Hex Bolt, pass the assembly through the slot in the Bottom Bracket, into the threaded insert, and hand tighten.



STEP 20

Slide a 1/4" Split Lock Washer and a 1/4" Flat Washer over a 1/4 - 20 x 1" Hex Bolt, pass the assembly through the slot in the Side Bracket, into the 1/4 - 20 U-Nut, and hand tighten.

Repeat the process for the Top Bracket.

Fully tighten the hardware installed in **Steps 17-19**, then fully tighten the two 1/4 - 20 x 1" Hex Bolts.



STEP 21

Connect speaker cable to the terminal cup on the side of the enclosure, and route the cable as necessary.



STEP 22

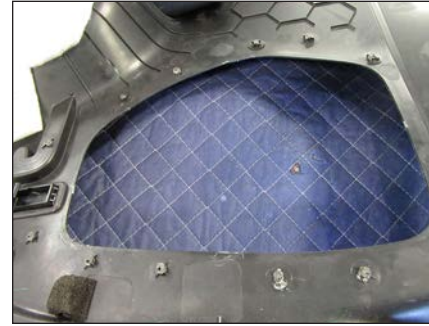
Pictured is the Stealthbox installed in the vehicle.



STEP 23

Place the cargo side panel on a soft, flat surface with the rear surface facing up.

Using a grinder, carefully remove the plastic welds to separate the factory subwoofer grille (or storage pocket for vehicles not equipped with factory subwoofer) from the cargo side panel, using caution to not grind through the panel itself.



STEP 24

Pictured is the cargo side panel with the factory subwoofer grille removed.



STEP 25

Align the Grille Assembly with the opening on the front of the cargo side panel. Secure the Grille Assembly to the panel by turning each of the retaining clips from the back, as shown.



STEP 26

Plug in the cargo light, and reinstall the cargo side panel.

Reinstall the rear door sill panel.



STEP 27

Reinstall the cargo sill panel and the two foam storage inserts.



STEP 28

Reinstall the cargo floor panel.

CONGRATULATIONS!

You have completed the installation for this model! Enjoy your new Stealthbox®!



MID/HIGH FREQUENCY DRIVER FITMENT

A variety of JL Audio coaxial and component systems will fit in the factory speaker locations of your vehicle.

Location / OEM Speaker Size	Suggested JL Audio Speaker Models	
	Coaxial Models	Component Models
Front Doors / 6.5-inch	C1-650x, C2-650x, C5-650x	C1-650, C2-650, C3-650, C5-650, C7-650cw ⁽²⁾
Rear Doors / 6.5-inch	C1-650x, C2-650x, C5-650x	C1-650, C2-650, C3-650, C5-650, C7-650cw ⁽²⁾

1 - Installation may require adaptor, 2 - Component woofer only

JL AUDIO | How we play.®    

(954) 443-1100

www.jlaudio.com

All specifications are subject to change without notice. "JL Audio" and "How we play" are registered trademarks of JL Audio, Inc. "Ahead of the Curve" and its respective logo are trademarks of JL Audio, Inc.
Printed in USA • ©2018 JL Audio, Inc. • For more detailed information please visit us online at www.jlaudio.com.

JLA-SKU# 011507 • ver. 05.15.2018 • 10369 NORTH COMMERCE PARKWAY • MIRAMAR, FLORIDA • 33025 • USA



011507