

Stealthbox®

INSTALLATION GUIDE for the

SB-D-MGACAB/10W6v3 2006 - Up Dodge Ram Mega Cab Trucks



Thank you for choosing a JL Audio Stealthbox® for your automotive sound system.

With proper installation, your new vehicle-specific enclosed subwoofer system will deliver years of listening pleasure.

We strongly recommend that you have your new Stealthbox® installed by your authorized JL Audio dealer. The installation professionals employed by your dealer have the necessary tools and experience to disassemble and reassemble your vehicle properly. Also, keep in mind that your warranty coverage extends to two years if your system is installed or approved by your authorized JL Audio dealer. If you prefer to perform your own installation, please read this installation guide completely before beginning the process.

JL AUDIO®
Ahead of the Curve™

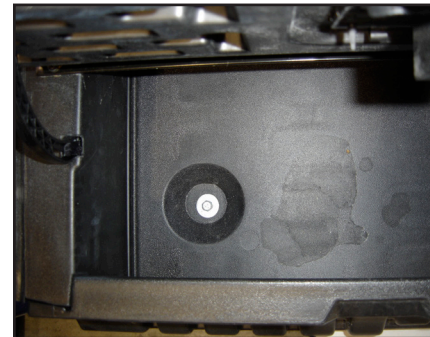
! IMPORTANT

If you choose to perform the installation yourself, it is absolutely vital that the Stealthbox® be properly mounted to the vehicle according to these instructions. Failure to mount the enclosure properly presents two problems:

- 1) The sub-bass performance will suffer due to the movement of the enclosure caused by the force exerted by the woofer(s).
- 2) A loose enclosure presents a serious safety hazard in the event of a collision or sudden deceleration.

INSTALLATION DIFFICULTY:

2
OUT
OF
5



STEP 1

Remove all contents from the rear seating area and fold down the rear seating.

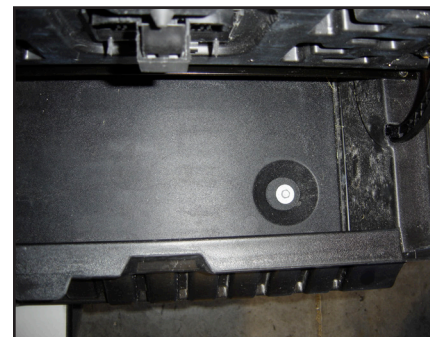
Open the storage unit that is located between the rear seat and the rear wall. In this storage unit there is three bolts.

Remove the passenger side bolt.



STEP 2

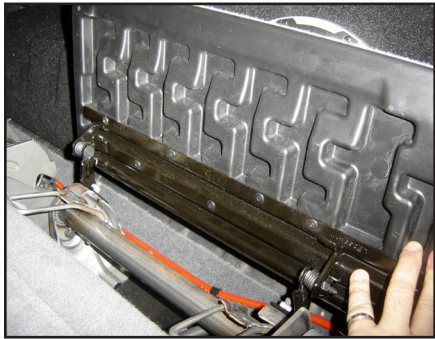
Remove the middle bolt.



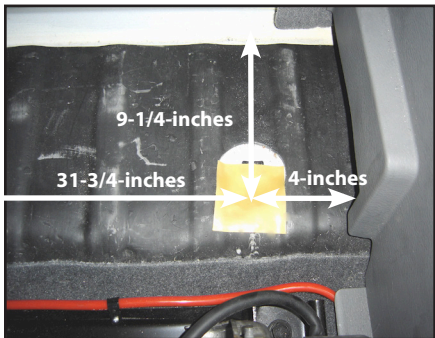
STEP 3

Remove the driver's side bolt.

Remove the storage unit out of the vehicle.

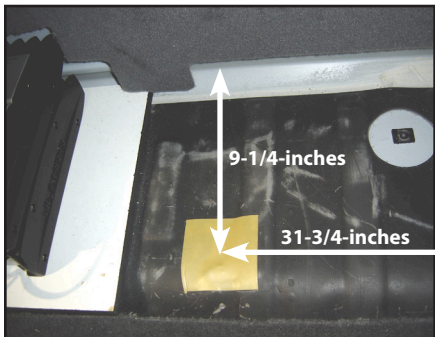


STEP 4
Remove the driver's and passenger's side folding floor extensions.



STEP 5
As in the picture, measure for the exact placement of the wax square.

Remove the paper backing from one of the supplied wax squares. Apply the wax square onto the flooring behind the rear seating on the driver's side.



STEP 6
The 31-3/4" measurement is starting from the middle of the first wax square to the left, as seen in **STEP 5 & 6**.

Remove the paper backing from the second supplied wax square. Apply this second wax square 31-3/4" to the left of the first wax square.



STEP 7
Thread in the two supplied socket cup set screws to the bottom of the Stealthbox®. Leaving about 1/4" exposed.



STEP 8
Position the enclosure and press firmly down. This is to leave an impression onto the wax squares.



STEP 9
Place the Stealthbox® upside down on the folded rear seats. Back out both socket cup set screws to expose 1-1/5".

With an 1/2" drill bit and drill. Drill through the floor at the wax squares, using the impressions of the socket cup set screw as a guide.

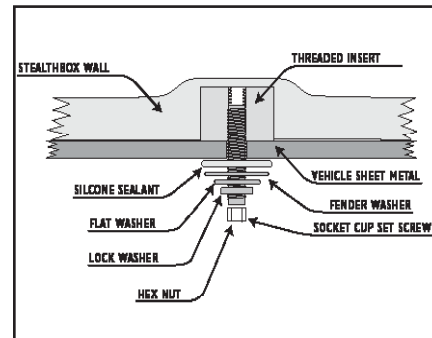
Once both holes have been drilled, remove both wax squares.



STEP 10
Place the Stealthbox® into place. Carefully guiding the socket cup set screws through the drilled holes.

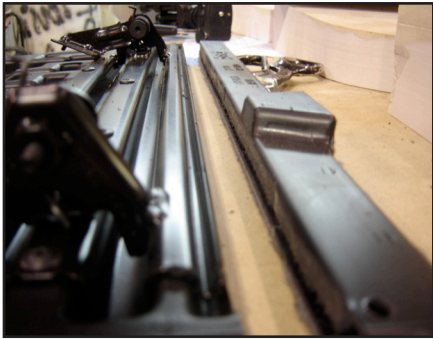
Run speaker wire from the amplifier location to the enclosure and attach to the terminal.

Check the woofers for proper operation.



STEP 11
From under the vehicle, place the supplied fender washers, flat washers, lock washers and then hex nuts onto each protruding socket cup set screw and secure. Adjust the amount of exposed thread on each cup set screw if necessary.

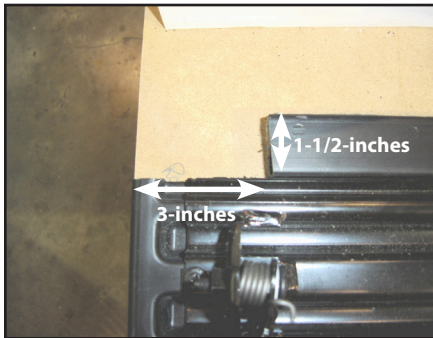
Note: For added protection, it is recommended that you apply a bead of silicone between the vehicle and the fender washer. After the bolt assembly is tightly secured, it is also recommended that vehicle under-coating material is applied to the exposed assembly.



If the folding floor extensions are to be retained, they will need to be permanently modified, follow STEPS 12-14. If they are not to be retained,
CONGRATULATIONS
 You have completed the installation for this model!

STEP 12

The driver's side folding floor extension will need to be cut across the entire rear section. As in the picture, use the metal framing as a cutting guide.



STEP 13

The passenger's side folding floor extension will only need to be cut on the rear corner, driver's side.



STEP 14

Use scissors to clean up the carpet's edge. Mount the folding floor extensions.

CONGRATULATIONS

You have completed the installation for this model!

Please refer to the Power Recommendation section for an amplifier recommendation and basic set-up help.



INCLUDED HARDWARE

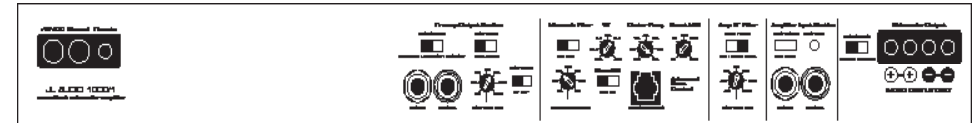
- (2) 3/8-inch - 16 x 2-1/2-inch Socket Cup Screw
- (2) 3/8-inch x 2-inch Fender Washer
- (2) 3/8-inch USS Flat Washer
- (2) 3/8-inch Split Lock Washer
- (2) 3/8-inch Hex Nut

SPECIFICATIONS

Enclosure Type: Acoustic Suspension (sealed)
Driver Type: Two 10W6v3-D4
Nominal Impedance: 4 ohms mono
Continuous Power Handling: 1200 Watts

POWER RECOMMENDATION

JL Audio recommends using a high quality amplifier such as the JL Audio HD750/1, HD1200/1& 1200/1V3. The diagram below shows the recommended crossover, infrasonic filter and equalizer settings for the 1200/1V3 when being used to power your Stealthbox®.



The JL Audio 1200/1V3 is a very versatile audio component. Please consult the owner's manual for even more detailed information about installing and tuning this amplifier.

MID/HIGH FREQUENCY DRIVER FITMENT

A variety of JL Audio coaxial and component systems will fit in the factory speaker locations of your vehicle.

Front Speaker Size / Location: 6 x 9 / Front Doors
Fits JL Audio Models: TR690-TXi & C2690tx

Rear Speaker Size / Location: 5.25-inch / Rear Door
Fits JL Audio Models: TR525-CXi, C2525x & C3525

JL AUDIO®
Ahead of the Curve™

(954) 443-1100

www.jlaudio.com

All specifications are subject to change without notice. "JL Audio" and the JL Audio logo, "Stealthbox" and the Stealthbox logo are registered trademarks of JL Audio, Inc. "Ahead of the Curve" and its respective logo is a trademark of JL Audio, Inc.
JLA-SKU#011217-8-20-2014 • Printed in USA • ©2005 JL Audio, Inc. • U.S. PATENTS: #5,734,734 #5,949,898 #6,118,884 #6,229,902 #6,243,479 #6,294,959 #6,501,844 #6,496,590 #6,441,685 #5,687,247 #6,219,431 #6,625,292 #D472,891 #D480,709 Other U.S. & Foreign patents pending. For more detailed information please visit us online at www.jlaudio.com.

