



Google Play Store



Apple App Store

iOS 12.1 or higher



Ford Select Models 2018-Up* A2B Data Interface with Amplifier Bypass Harness & DSP

*Visit axcessinterfaces.com for current application list.

INTERFACE COMPONENTS

- AXDSPX-A2B2 interface
- AXDSPX-A2B2 harness
- Amplifier bypass harness
- Radio T-Harness
- AXBK-1
- A2B-EXT
- Bass Knob
- Extension Cable

TOOLS REQUIRED

- Crimping tool and connectors, or solder gun, solder, and heat shrink
- Tape
- Wire cutter
- Zip-ties

ATTENTION: With the key out of the ignition, disconnect the negative battery terminal before installing this product. Ensure that all installation connections, especially the air bag indicator lights, are plugged in before reconnecting the battery or cycling the ignition to test this product.

NOTE: Refer also to the instructions included with the aftermarket radio.

For Dash Disassembly Instructions, refer to metraonline.com. Enter the year, make, and model of the vehicle in the **Vehicle Fit Guide for Radio Install kits**.

TABLE OF CONTENTS

Interface Features.....	2
Things To Know About The AXDSP	3-4
Important Information.....	5
Connections.....	6-7
Speaker Wiring Charts	
Ford Bronco 2021-UP	8
Ford Bronco Sport 2021-UP.....	9
Ford F-150 2018-2020	10
Ford F-150 2021-2022 (8 Speaker).....	11
Ford F-150 2021-2022 (18 Speaker)	12
Ford Super Duty 2020-UP.....	13
Ford Edge 2019-Up (12 Speaker)	14
Ford Escape 2020-Up W/Sync.....	15
Ford Expedition 2020-UP (12 Speaker)	16
Ford Explorer 2020-UP (12 & 14 Speaker).....	17
Ford Ranger 2019-2022 (8 Speaker)	18
Quick Setup Steps: AXDSP-XL App	19
LED Feedback	20

AXDSPX-A2B2 INTERFACE FEATURES

INTERFACE FEATURES

- Designed for B & O A2B amplifiers
- A2B data interface w/AXDSP-X (digital signal processor) built-in
- Includes an amplifier bypass harness
- Retains factory chimes including parking sensor chimes
- Retains SYNC voice prompts
- Chimes and voice prompts go through the aftermarket amplifier and/or cluster
- Selectable 31 Band graphic EQ or 5 Band Parametric EQ
- 10 individually assignable outputs
- Independent equalization on each of the 10 outputs
- Independent high pass, low pass, and bandpass filters
- Each channel can be delayed independently up to 10ms
- Clipping detection and limiting circuits
- Settings adjusted via Bluetooth® in a smart device application (tablet or mobile phone), compatible with both Android and Apple devices
- Read, write, and store configurations for future recall
- Password protect feature available in the mobile app
- Micro-B USB updatable

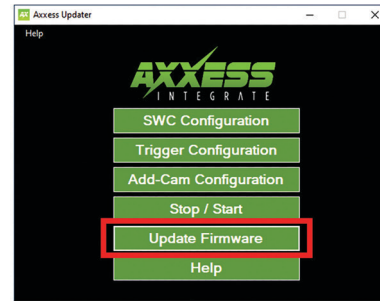
THINGS TO KNOW ABOUT THE AXDSP



Important: Updating your interface with the **Axxess Updater** is critical to the interface functioning properly.

Visit axcessinterfaces.com

Select **Updater Software** from the top menu bar.



 PC Axxess Updater

[Download Axxess Updater](#)



Micro-B Data Transfer Cable

Not included

THINGS TO KNOW ABOUT THE AXDSP CONT.

1. The factory amplifier will be completely removed from the vehicle. This interface can not be used to add a subwoofer only. Aftermarket amplifiers will need to be added to power the vehicle speakers.
2. Installation of the **AXDSPX** will be done at the factory amplifiers location, refer to the wire chart for locations. The harnessing installed at the factory amplifier location includes the bypass harness.
3. Two **T-harnesses** are included in the kit, one will be installed behind the factory radio to access factory speaker wires powered by the radio.
4. The included bass knob will adjust the output levels of your subwoofer. To set your subwoofer channel, select the **Outputs** page within the app. Under the **Location** column select the channel connected to your sub amp. From the drop-down menu select **Subwoofer**. Don't forget to **Lock Down**.
5. Vehicle chimes will output through the instrument cluster speaker. The chime levels are fixed.
6. If running multiple amplifiers, a relay is recommended.

The **AXDSP interface** doesn't require a full understanding of equalization, crossover setting, or time delay to function properly. After the quick setup process is completed the **AXDSP interface** will output a full range signal allowing for the use of an external DSP or to use the aftermarket amplifiers settings.

The **AXDSP** does offer all the standard features found in an external **DSP**. All settings and adjustments are made through the app. For more details on these added features please refer to the instructions under the **Setup Instructions** tab, or online at Axxessinterfaces.com for an explanation of each tab in the app.

IMPORTANT INFORMATION ABOUT SUPPLIED T-HARNESSES

It is recommended to use the factory speaker wires when connecting to your aftermarket equipment. In vehicles that use **A2B communications (B & O Badging)** the factory amplifier powers specific speakers in the vehicle. The remaining speakers are powered off the factory radio. The speaker connectors found at the radio could be one of two harnesses, both are included with the interface and allow for quick access to the OE speaker. Additional speaker wires will be needed to run from the radio chassis to the aftermarket amplifiers location.

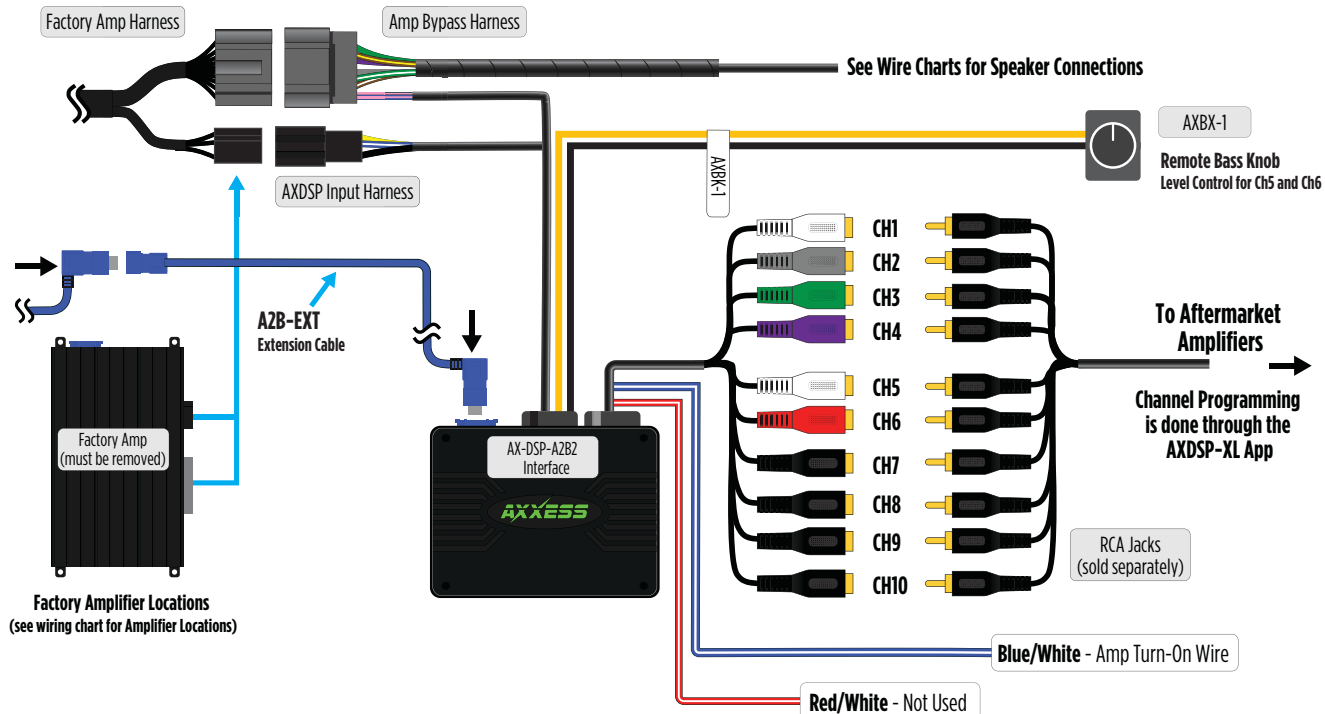
Due to the variation from the factory speaker wire location and colors it is critical that the speaker wire charts be used when wiring your aftermarket equipment. The supplied T-harnesses will not follow the standard speaker wire colors. It is recommended that each speaker wire be double checked using a tone generator and polarity tester.

EXAMPLE

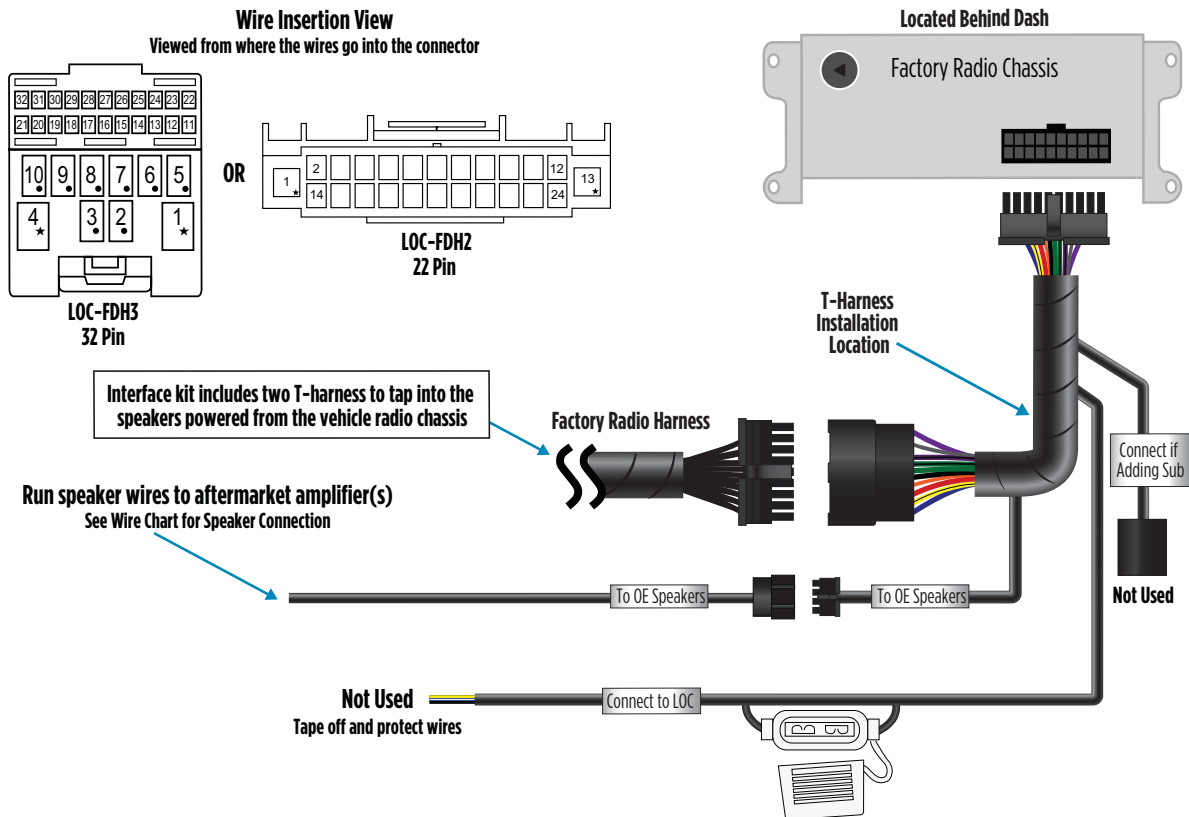
Ford Expedition 2020-UP (12 Speaker) B & O System				Amplifier Location: Left Rear Quarter Panel		
20 Pin Amplifier Bypass Harness (Factory Amp Location)				24 Pin Radio T-Harness LOC-FDH2 (Radio Chassis)		
SPEAKER LOCATION	LABEL NAME	ACCESS COLOR	POLARITY	SPEAKER LOCATION	ACCESS COLOR	POLARITY
Front Left Door SP	Speaker 1	White	+	Front Left Door Tw	White	+
		White/Black	-		White/Black	-
Rear Right Door Tw	Speaker 2	Gray	+	Front Right Door Tw	Gray	+
		Gray/Black	-		Gray/Black	-
Rear Left Door Tw	Speaker 3	Green	+	D-Pillar Left SP	Green	+
		Green/Black	-		Green/Black	-
Rear Left Door SP	Speaker 4	Purple	+	D-Pillar Right SP	Purple	+
		Purple/Black	-		Purple/Black	-
Subwoofer 2	Speaker 5	Brown/Yellow	+			
		Brown/Blue	-			
Subwoofer 1	Speaker 6	Green/White	+			
		White/Red	-			
Front Right Door SP	Speaker 7	Brown/White	+			
		Dark Blue/Pink	-			
Inst Panel SP Center	Speaker 8	Orange/Red	-			
		Orange/Red/Black	+			
Rear Right Door SP	Speaker 9	Blue	-			
		Blue/Black	+			

CONNECTIONS TO BE MADE AT THE FACTORY AMPLIFIER'S LOCATION

1. Locate the factory amp, unplug all connectors, then remove the amp.
2. Install the **AXDSPX-A2B2 harness** and make all necessary connections, but leave the amp turn-on wire disconnected.



CONNECTIONS TO BE MADE AT THE FACTORY RADIO'S LOCATION



SPEAKER WIRING CHARTS: FORD BRONCO 2021-UP B & O SYSTEM

Ford Bronco 2021-UP B & O System Amplifier Location: Left Rear, Behind Quarter Panel						
20 Pin Amplifier Bypass Harness (Factory Amp Location)				32 Pin Radio T-Harness LOC-FDH3 (Radio Chassis)		
SPEAKER LOCATION	LABEL NAME	AXXESS COLOR	POLARITY	SPEAKER LOCATION	AXXESS COLOR	POLARITY
Front Left Kick Panel	Speaker 1	White	+	Rear Left POD	White	+
		White/Black	-		White/Black	-
Front Right Kick Panel	Speaker 2	Gray	+	Center Channel	Gray	+
		Gray/Black	-		Gray/Black	-
Top Left Dash	Speaker 3	Green	+	Not Used	Green	
		Green/Black	-		Green/Black	
Top Right Dash	Speaker 4	Purple	+	Rear Right POD	Purple	+
		Purple/Black	-		Purple/Black	-
Subwoofer 2	Speaker 5	Brown/Yellow	+			
		Brown/Blue	-			
Subwoofer 1	Speaker 6	Green/White	+			
		White/Red	-			
Not Used	Speaker 7	Brown/White				
		Dark Blue/Pink				
Not Used	Speaker 8	Orange/Red				
		Orange/Red/Black				
Not Used	Speaker 9	Blue				
		Blue/Black				

SPEAKER WIRING CHARTS: FORD BRONCO SPORT 2021-UP B & O SYSTEM

Ford Bronco Sport 2021-UP B & O System Amplifier Location: Left Rear, Behind Quarter Panel						
20 Pin Amplifier Bypass Harness (Factory Amp Location)				32 Pin Radio T-Harness LOC-FDH3 (Radio Chassis)		
SPEAKER LOCATION	LABEL NAME	AXXESS COLOR	POLARITY	SPEAKER LOCATION	AXXESS COLOR	POLARITY
Front Left Door SP	Speaker 1	White	+	Center Channel	White	+
		White/Black	-		White/Black	-
Front Right Door SP	Speaker 2	Gray	+	Dash Left	Gray	-
		Gray/Black	-		Gray/Black	+
Rear Left Door	Speaker 3	Green	+	Dash Right	Green	-
		Green/Black	-		Green/Black	+
Rear Right Door	Speaker 4	Purple	+	Not Used	Purple	
		Purple/Black	-		Purple/Black	
Not Used	Speaker 5	Brown/Yellow	+			
		Brown/Blue	-			
Subwoofer 1	Speaker 6	Green/White	+			
		White/Red	-			
Not Used	Speaker 7	Brown/White				
		Dark Blue/Pink				
Not Used	Speaker 8	Orange/Red				
		Orange/Red/Black				
Not Used	Speaker 9	Blue				
		Blue/Black				

SPEAKER WIRING CHARTS: FORD F-150 2018-2020 (8 SPEAKER) B & O SYSTEM

Ford F-150 2018-2020 (8 Speaker) B & O System				Amplifier Location: Driver Side, Behind Rear Seat		
20 Pin Amplifier Bypass Harness (Factory Amp Location)				24 Pin Radio T-Harness LOC-FDH2 (Radio Chassis)		
SPEAKER LOCATION	LABEL NAME	AXXESS COLOR	POLARITY	SPEAKER LOCATION	AXXESS COLOR	POLARITY
Front Left Door SP	Speaker 1	White	+	Tweeter Left Front	White	+
		White/Black	-		White/Black	-
Front Right Door SP	Speaker 2	Gray	+	Tweeter Right Front	Gray	+
		Gray/Black	-		Gray/Black	-
Rear Left Door	Speaker 3	Green	+	Not Used	Green	
		Green/Black	-		Green/Black	
Rear Right Door	Speaker 4	Purple	+	Not Used	Purple	
		Purple/Black	-		Purple/Black	
Subwoofer 2	Speaker 5	Brown/Yellow	+			
		Brown/Blue	-			
Subwoofer 1	Speaker 6	Green/White	+			
		White/Red	-			
Center Channel	Speaker 7	Brown/White	+			
		Dark Blue/Pink	-			
Not Used	Speaker 8	Orange/Red				
		Orange/Red/Black				
Not Used	Speaker 9	Blue				
		Blue/Black				

SPEAKER WIRING CHARTS: FORD F-150 2021-2022 (8 SPEAKER) B & O SYSTEM

Ford F-150 2021-2022 (8 Speaker) B & O System Amplifier Location: Driver Side, Behind Rear Seat						
20 Pin Amplifier Bypass Harness (Factory Amp Location)				32 Pin Radio T-Harness LOC-FDH3 (Radio Chassis)		
SPEAKER LOCATION	LABEL NAME	AXXESS COLOR	POLARITY	SPEAKER LOCATION	AXXESS COLOR	POLARITY
Front Left Door SP	Speaker 1	White	+	Not Used	White	
		White/Black	-		White/Black	
Front Right Door SP	Speaker 2	Gray	+	Tweeter Left Front	Gray	+
		Gray/Black	-		Gray/Black	-
Rear Left Door	Speaker 3	Green	+	Tweeter Right Front	Green	+
		Green/Black	-		Green/Black	-
Rear Right Door	Speaker 4	Purple	+	Not Used	Purple	
		Purple/Black	-		Purple/Black	
Center Channel	Speaker 5	Brown/Yellow	+			
		Brown/Blue	-			
Subwoofer 1	Speaker 6	Green/White	+			
		White/Red	-			
Not Used	Speaker 7	Brown/White				
		Dark Blue/Pink				
Not Used	Speaker 8	Orange/Red				
		Orange/Red/Black				
Not Used	Speaker 9	Blue				
		Blue/Black				

SPEAKER WIRING CHARTS: FORD F-150 2021-2022 (18 SPEAKER) B & O SYSTEM

Ford F-150 2021-2022 (18 Speaker) B & O System Amplifier Location: Driver Side, Behind Rear Seat						
20 Pin Amplifier Bypass Harness (Factory Amp Location)				32 Pin Radio T-Harness LOC-FDH3 (Radio Chassis)		
SPEAKER LOCATION	LABEL NAME	AXXESS COLOR	POLARITY	SPEAKER LOCATION	AXXESS COLOR	POLARITY
Front Left Door SP	Speaker 1	White	+	Rear Left Door	White	+
		White/Black	-		White/Black	-
Inst Panel SP Left	Speaker 2	Gray	+	Tweeter Left Front	Gray	+
		Gray/Black	-		Gray/Black	-
Overhead SP FL	Speaker 3	Green	+	Tweeter Right Front	Green	+
		Green/Black	-		Green/Black	-
Headrest SP Left	Speaker 4	Purple	+	Rear Right Door	Purple	+
		Purple/Black	-		Purple/Black	-
Overhead SP FR	Speaker 5	Brown/Yellow	+			
		Brown/Blue	-			
Subwoofer 1	Speaker 6	Green/White	+			
		White/Red	-			
Front Right Door SP	Speaker 7	Brown/White	+			
		Dark Blue/Pink	-			
Inst Panel SP Center	Speaker 8	Orange/Red	+			
		Orange/Red/Black	-			
Inst Panel SP Right	Speaker 9	Blue	+			
		Blue/Black	-			

SPEAKER WIRING CHARTS: FORD SUPER DUTY 2020-UP B & O SYSTEM

Ford Super Duty 2020-Up B & O System Amplifier Location: Driver Side, Behind Rear Seat						
20 Pin Amplifier Bypass Harness (Factory Amp Location)				32 Pin Radio T-Harness LOC-FDH3 (Radio Chassis)		
SPEAKER LOCATION	LABEL NAME	AXXESS COLOR	POLARITY	SPEAKER LOCATION	AXXESS COLOR	POLARITY
Front Left Door SP	Speaker 1	White	+	Not Used	White	
		White/Black	-		White/Black	
Front Right Door SP	Speaker 2	Gray	+	Tweeter Left Front	Gray	+
		Gray/Black	-		Gray/Black	-
Rear Left Door Crew/Super Cab ONLY	Speaker 3	Green	+	Tweeter Right Front	Green	+
		Green/Black	-		Green/Black	-
Rear Right Door Crew/Super Cab ONLY	Speaker 4	Purple	+	Not Used	Purple	
		Purple/Black	-		Purple/Black	
Subwoofer 2	Speaker 5	Brown/Yellow	+	Not Used		
		Brown/Blue	-			
Subwoofer 1	Speaker 6	Green/White	+			
		White/Red	-			
Center Channel	Speaker 7	Brown/White	-			
		Dark Blue/Pink	+			
Not Used	Speaker 8	Orange/Red				
		Orange/Red/Black				
Not Used	Speaker 9	Blue				
		Blue/Black				

SPEAKER WIRING CHARTS: FORD EDGE 2019-UP (12 SPEAKER) B & O SYSTEM

Ford Edge 2019-Up (12 Speaker) B & O System Amplifier Location: Left Rear, Behind Quarter Panel						
20 Pin Amplifier Bypass Harness (Factory Amp Location)				24 Pin Radio T-Harness LOC-FDH2 (Radio Chassis)		
SPEAKER LOCATION	LABEL NAME	AXXESS COLOR	POLARITY	SPEAKER LOCATION	AXXESS COLOR	POLARITY
Front Left Door SP	Speaker 1	White	+	Front Left Tweeter	White	+
		White/Black	-		White/Black	-
Front Right Door SP	Speaker 2	Gray	+	Front Right Tweeter	Gray	+
		Gray/Black	-		Gray/Black	-
Rear Left Quarter Panel SP	Speaker 3	Green	+	Rear Left Door SP	Green	+
		Green/Black	-		Green/Black	-
Rear Right Quarter Panel SP	Speaker 4	Purple	+	Rear Right Door SP	Purple	+
		Purple/Black	-		Purple/Black	-
Rear Center Sp 2	Speaker 5	Brown/Yellow	+			
		Brown/Blue	-			
Rear Center Sp 1	Speaker 6	Green/White	+			
		White/Red	-			
Inst Panel FR SP	Speaker 7	Brown/White	+			
		Dark Blue/Pink	-			
Not Used	Speaker 8	Orange/Red				
		Orange/Red/Black				
Not Used	Speaker 9	Blue				
		Blue/Black				

SPEAKER WIRING CHARTS: FORD ESCAPE 2020-UP W/SYNC

Ford Escape 2020-Up W/Sync				Amplifier Location: Above Right Rear Wheelwell		
20 Pin Amplifier Bypass Harness (Factory Amp Location)				24 Pin Radio T-Harness LOC-FDH2 (Radio Chassis)		
SPEAKER LOCATION	LABEL NAME	AXXESS COLOR	POLARITY	SPEAKER LOCATION	AXXESS COLOR	POLARITY
Front Left Door SP	Speaker 1	White	+	Not Used	White	
		White/Black	-		White/Black	
Front Right Door SP	Speaker 2	Gray	+	Center Channel FR	Gray	+
		Gray/Black	-		Gray/Black	-
Rear Left Door SP	Speaker 3	Green	+	Left Inst Panel SP	Green	-
		Green/Black	-		Green/Black	+
Rear Right Door SP	Speaker 4	Purple	+	Right Inst Panel SP	Purple	-
		Purple/Black	-		Purple/Black	+
Rear Center Sp 2	Speaker 5	Brown/Yellow	+			
		Brown/Blue	-			
Subwoofer 1	Speaker 6	Green/White	+			
		White/Red	-			
Not Used	Speaker 7	Brown/White				
		Dark Blue/Pink				
Not Used	Speaker 8	Orange/Red				
		Orange/Red/Black				
Not Used	Speaker 9	Blue				
		Blue/Black				

SPEAKER WIRING CHARTS: FORD EXPEDITION 2020-UP (12 SPEAKER) B & O SYSTEM

Ford Expedition 2020-UP (12 Speaker) B & O System Amplifier Location: Left Rear Quarter Panel						
20 Pin Amplifier Bypass Harness (Factory Amp Location)				24 Pin Radio T-Harness LOC-FDH2 (Radio Chassis)		
SPEAKER LOCATION	LABEL NAME	AXXESS COLOR	POLARITY	SPEAKER LOCATION	AXXESS COLOR	POLARITY
Front Left Door SP	Speaker 1	White	+	Front Left Door Tw	White	+
		White/Black	-		White/Black	-
Rear Right Door Tw	Speaker 2	Gray	-	Front Right Door Tw	Gray	+
		Gray/Black	+		Gray/Black	-
Rear Left Door Tw	Speaker 3	Green	+	D-Pillar Left SP	Green	+
		Green/Black	-		Green/Black	-
Rear Left Door SP	Speaker 4	Purple	+	D-Pillar Right SP	Purple	+
		Purple/Black	-		Purple/Black	-
Subwoofer 2	Speaker 5	Brown/Yellow	+			
		Brown/Blue	-			
Subwoofer 1	Speaker 6	Green/White	+			
		White/Red	-			
Front Right Door SP	Speaker 7	Brown/White	+			
		Dark Blue/Pink	-			
Inst Panel SP Center	Speaker 8	Orange/Red	-			
		Orange/Red/Black	+			
Rear Right Door SP	Speaker 9	Blue	-			
		Blue/Black	+			

SPEAKER WIRING CHARTS: FORD EXPLORER 2020-UP (12& 14 SPEAKER) B & O SYSTEM W/O EMERGENCY CALL

Ford Explorer 2020-UP (12 & 14 Speaker) B & O System W/O Emergency Call				Amplifier Location: Left Side of Cargo Area*		
20 Pin Amplifier Bypass Harness (Factory Amp Location)				32 Pin Radio T-Harness LOC-FDH3 (Radio Chassis)		
SPEAKER LOCATION	LABEL NAME	AXCESS COLOR	POLARITY	SPEAKER LOCATION	AXCESS COLOR	POLARITY
Front Left Door SP	Speaker 1	White	+	D-Pillar Right SP	White	+
		White/Black	-		White/Black	-
Subwoofer 2	Speaker 2	Gray	+	D-Pillar Left SP	Gray	+
		Gray/Black	-		Gray/Black	-
Subwoofer 1	Speaker 3	Green	+	Front Left Door Tw	Green	-
		Green/Black	-		Green/Black	+
Rear Left Door SP	Speaker 4	Purple	+	Front Right Door Tw	Purple	-
		Purple/Black	-		Purple/Black	+
Front Right Door Mid 14 Sp system	Speaker 5	Brown/Yellow	+	<p>*Note: Radio Chassis is located in the Right Rear Corner of the cargo area, behind the panel.</p>		
		Brown/Blue	-			
Front Left Door Mid 14 Sp system	Speaker 6	Green/White	+			
		White/Red	-			
Front Right Door SP	Speaker 7	Brown/White	+			
		Dark Blue/Pink	-			
Inst Panel SP Center	Speaker 8	Orange/Red	-			
		Orange/Red/Black	+			
Rear Right Door SP	Speaker 9	Blue	-			
		Blue/Black	+			

SPEAKER WIRING CHARTS: FORD RANGER 2019-2022 (8 SPEAKER) B & O SYSTEM

Ford Ranger 2019-2022 (8 Speaker) B & O System Amplifier Location: Driver Side, Behind Rear Seat						
20 Pin Amplifier Bypass Harness (Factory Amp Location)				24 Pin Radio T-Harness LOC-FDH2 (Radio Chassis)		
SPEAKER LOCATION	LABEL NAME	AXXESS COLOR	POLARITY	SPEAKER LOCATION	AXXESS COLOR	POLARITY
Rear Right Door SP	Speaker 1	White	+	Front Left Door Tw	White	+
		White/Black	-		White/Black	-
Front Left Door SP	Speaker 2	Gray	+	Front Right Door Tw	Gray	+
		Gray/Black	-		Gray/Black	-
Rear Left Door SP	Speaker 3	Green	+	Center Channel SP	Green	+
		Green/Black	-		Green/Black	-
Subwoofer 2	Speaker 4	Purple	+	Not Used	Purple	
		Purple/Black	-		Purple/Black	
Center Channel	Speaker 5	Brown/Yellow	+			
		Brown/Blue	-			
Front Right Door SP	Speaker 6	Green/White	+			
		White/Red	-			
Subwoofer 1	Speaker 7	Brown/White	+			
		Dark Blue/Pink	-			
Not Used	Speaker 8	Orange/Red				
		Orange/Red/Black				
Not Used	Speaker 9	Blue				
		Blue/Black				

QUICK SETUP STEPS THROUGH AXDSP-XL APP

Google Play Store

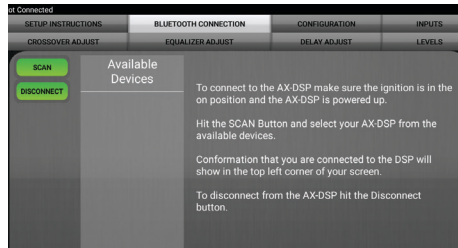


Apple App Store

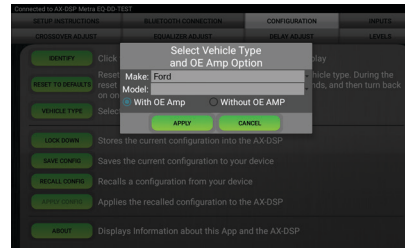
iOS 12.1 or higher



1. Download and install the AXDSP-X app from the **Google Play Store** or **Apple App Store**.
2. Turn Vehicle Ignition on. Make sure the Remote Turn on lead is disconnected.
3. Open the app: Select **Bluetooth Connections** page.
 - Select **Scan**, all available AXDSP devices within range will be displayed. Select your AXDSP and hit connect. (Figure A)
4. Select the Configuration page.
 - Select **Vehicle Type** Icon
 - Select the Vehicle Make: Ford
 - Select the Vehicle's model: _____ (Example: Bronco)
 - Select **With OE Amp**
 - Hit **Apply** (Figure B)
5. Make sure radio volume is all the way down.
6. Connect the amp turn-on wire from the **AXDSPX-A2B2** harness to the aftermarket amplifiers.
7. From the **Configuration** page click the **Identify** button to confirm that the AXDSPX-A2B2 is connected properly. If so, a chime will be heard from the front left speaker.
8. Press the **Lock Down** button to save the configuration. (Do not turn ignition off until this process is completed) (Figure C)
9. Select the **Bluetooth Configurations** page and disconnect the DSPX.
10. Turn ignition off, close all door then lock vehicle using the key fob. The vehicle will need to sit uninterrupted for 10 minutes while the vehicle goes to sleep. (Make sure Key fob is 15 feet away from the vehicle)
11. Unlock Vehicle, turn ignition on and test radio's functions.
12. Adjust the DSP settings in the app as desired. Refer to the instructions under the **Setup Instructions** tab, or online at Axxessinterf.com for an explanation of each tab in the app.

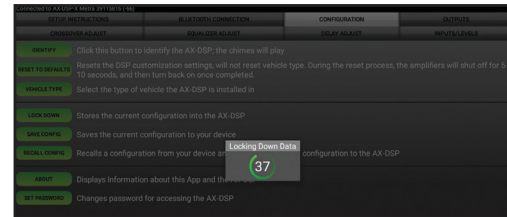


(Figure A)



(Figure B)

Locking Down Data



(Figure C)

**Last and the most important:
You MUST lock down your
configuration and cycle the key!!!**



AXDSPX-A2B2

INSTALLATION INSTRUCTIONS



A2B LED FEEDBACK

LED ON BOARD	BLINKING: VEHICLE'S BUS IS AWAKE
	OFF: VEHICLE IS ASLEEP

Having difficulties? We're here to help.



Contact our Tech Support line at:

386-257-1187



Or via email at:

techsupport@metra-autosound.com

Tech Support Hours (Eastern Standard Time)

Monday - Friday: 9:00 AM - 7:00 PM

Saturday: 10:00 AM - 5:00 PM

Sunday: 10:00 AM - 4:00 PM



KNOWLEDGE IS POWER

Enhance your installation and fabrication skills by enrolling in the most recognized and respected mobile electronics school in our industry. Log onto www.installerinstitute.edu or call 386-672-5771 for more information and take steps toward a better tomorrow.



Metra recommends MECP certified technicians