



LOCK AND SECURITY BARS – ASSEMBLY INSTRUCTIONS

Thank you for purchasing our Maximum Reptile™ Lock and Security Bar System.

These instructions will walk you through the complete assembly of your lock and security bar system, and the application of both onto the acrylic or polycarbonate panels of your enclosure. Note: Glass doors do not need security bars as glass does not flex.

Before you begin, make sure that you have all the parts necessary. If you notice anything missing, or if anything has sustained damage upon delivery, please let us know before proceeding with assembly.

1. Add rear door panel to enclosure lip on the left-hand side of the enclosure window.



2. Before applying the security bars, first position the lock on the inner edge of the rear door panel. It's recommended to position the lock approximately one inch from the bottom. Once positioned, gently screw it into place. Use a screwdriver only, so that the screw is firm, but not too tight.

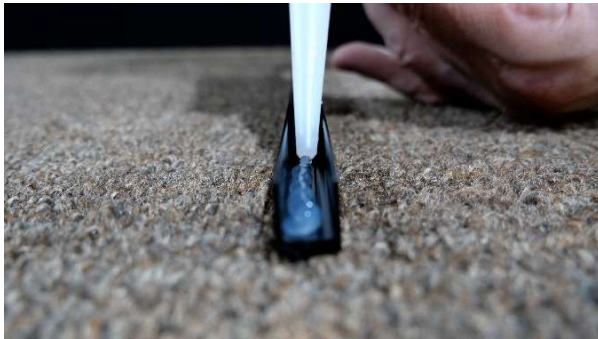
3. Apply a liberal amount of silicone sealant to the inside of the first security bar track.





4. Once the sealant is applied, position the security bar on the inner edge of the rear door panel, starting from the bottom. Gently press the bar into place, leaving a small gap at the top for pane removal.

5. After applying the first security bar, insert the front door panel on the right-hand side of the enclosure window.



6. Apply a liberal amount of silicone sealant to the second security bar strip.

7. Before adding the second security bar, add the locking mechanism onto the sliding part to help position the second security bar.





8. Place the second security bar onto the inner edge of the front door panel, just above the lock. Maintain a small gap at the top of the panel to allow for pane removal.

9. Allow 24 hours for the silicone sealant on each bar to fully cure.

CONGRATULATIONS - you have now fully assembled your Maximum Reptile™ Lock and Security Bar System.

We thank you for your patronage. Should you run into any issues or have questions regarding this assembly, please feel free to reach out to our customer service team for assistance.

Details can be found at the links below:

<https://customreptilehabitats.com/pages/contact-us>

Or use our QR codes on your smart phone to find other assembly instructions, videos, and product info.

