



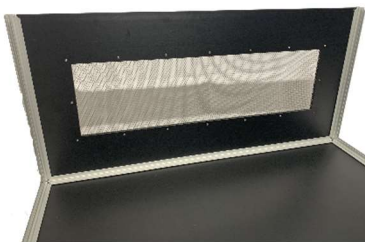
## Essential Series – Assembly Instructions



1. Place the Back of the enclosure on the ground. Make sure the bottom of the enclosure is closest to you (by checking the flag on the back which is positioned at the bottom of that panel).



2. Position then hammer the four 22" Side Tubes in place using a rubber mallet or a hammer with a soft piece of wood (between the hammer and tubes). Make sure the grooves are all facing inwards.



3. Once all four tubes are in place, it's time to begin inserting the four panels. **Make sure the top panel with the screen has the raised PVC part with the lock nuts on the outside of the enclosure.**



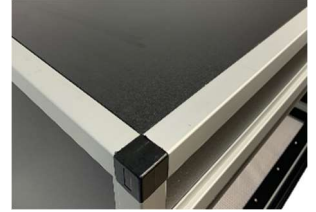
4. Now place the already assembled Front section onto the top and make sure the four plastic connectors are lined up with the holes in the tubes. With the rubber mallet, partly tap each corner into the tubes and rotate the taps around the four corners so that they evenly slide down into the tubing. **Make sure the four panels are aligned with the grooves as the front section is tapped securely in place.**



5. Now that your new enclosure is assembled, it's almost time to position it in its permanent location but before then, it's time to attach the extra panel labelled Gap Fill to the base of the enclosure.



6. Rotate your enclosure so that it's on its top, then using the complimentary silicon, run it around all four sides and across the middle of the base, being careful to stay back at least 1 inch from the edges as shown. Now guide the last panel into position to fully reinforce the base of your new enclosure.



7. After allowing a little time for the silicon to bond, your new enclosure is now ready to position in its permanent location and decorate. To add the glass doors, place the rear door in the rear track and the front door in the front track by lifting up into the top track, then lowering it back down into the bottom track.

**CONGRATULATIONS - you have now fully assembled your Maximum Reptile™ Essential Series Enclosure**

**We thank you for your patronage. Should you run into any issues or have questions regarding this assembly, please feel free to reach out to our customer service team for assistance.**

Details can be found at the links below: <https://customreptilehabitats.com/pages/contact-us>

**Or use our QR codes on your smart phone to find other instructions, videos, and product info.**

**OUR WEBSITE:**

