



Essential Series 8 x 4 x 4 and 8 x 4 x 6 – Assembly Instructions

Thank you for your purchase. Before you begin: Have all your parts laid out and accounted for. If you notice anything that is missing, or has damages upon delivery, please let us know before proceeding with assembly.

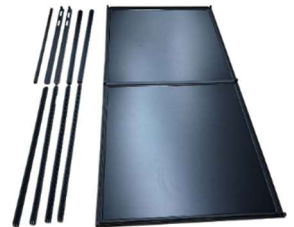
Due to the size of our 8 ft enclosure series, we strongly recommend having two people help with the assembly. Tools needed are a Rubber mallet, Phillips head screwdriver, an Adjustable wrench and some Scissors. Additionally, pliers will help remove any excess shavings that are made when joining the parts and a small piece of 2 x 4 wood is also handy when joining or separating the parts, should you make a mistake. We provide a 4mm Allen key wrench and a screen rolling tool to help install the gaskets (if your enclosure panels needs gaskets). **Please take a moment to read the instructions fully before beginning, to avoid making mistakes.**



1. Line up the **Back Left** and **Back Right** side of the enclosure and then hammer the parts together using a rubber mallet. We recommend doing this by laying both pieces on a covered floor (to avoid scratching your enclosure) and placing one end up against a wall or solid object so that it's easier to hammer the parts together.

Repeat this process for the front left and front right of your enclosure. Set the front frame of the enclosure off to the side for now.

2. Now that the back is assembled, lay the back that you have just put together flat on the ground (with the inside of the enclosure facing up, facing you). Now it is time to begin adding the 46-inch aluminum tubes (**these are labeled Side Tubes**). With your mallet, begin by hammering into place the 4 corners, making sure that the tracks are lined up with the tracks on the back frame.



Please note: the connectors are designed to be tight and will usually require several firm hits with a rubber mallet to fully move into place. It's quite normal to shave off some plastic on the connectors as they are hammered into place.



3. Once all four tubes are in place, its time to assemble the **Middle Bottom, Middle Top** and **Middle Front** tubes. Once assembled, this support frame for the middle of your enclosure will form a U-shape as shown. This part is now ready to hammer into place to the middle of the back frame of your enclosure using your mallet.



4. Now hammer down the assembled middle section into place as shown. **Please note: It's very important that the hole on the middle section is facing out and that it's positioned at the bottom of the enclosure as it will eventually bolt to the front section.**

5. With two people, gently rotate the enclosure so that it's positioned as shown. This will make it easier to screw into place the top tubes.



6. Carefully hold the **Top Support** with one hand so that it is horizontal and then screw this part into place. Repeat again for the second **Top Support** tube. While this step is being completed, its best to have your helper hold the tubes horizontal so that they are supported.



7. Now its time to gently rotate the enclosure back down so that its resting on its back once again.



8. Now you will begin to install all the PVC panels by sliding them into the channel legs of the aluminum tubes as shown. Begin with your **bottom panels which are labeled 46 1/2" x 46"**. Make sure you have the length of the bottom panels inserted correctly, with the 46 1/2" length of the panel oriented from left to right.



Please note: if inserted incorrectly, you will notice that they will not slide fully into position and will not line up with the ends of the tubing. Install the side panels that are labeled 46" x 46" as shown.



9. Next, decide how you would like to place your **screen tops which are labeled 46" x 22 3/4"**, as well as your **top panels labeled 46" x 22 3/4"**. You can position them on the left, or right side or even spaced apart, depending on how you will be positioning your lights. Once you have decided where you are going to place them, insert them into position. **Make sure that the screen tops are inserted with the label stating, "this side up" on the**

outside of the enclosure.



10. Please note: you will notice these panels will be longer than the middle tubes when positioned in place. You can now add the **top panels labeled 46" x 22 3/4"** into the remaining slots and your enclosure top is now complete and ready for the next step.



11. The front frame that you completed in step 1 is now ready to be seated onto the finished frame (Top, Bottom, Sides and Back) but before you do, now is the best time to make sure the gaskets are firmly in place, on this part. We find this easier when against a hard surface like a floor and while it takes a little effort to press the gasket into the gap, it will help secure the panels in place and also help stop substrate from

accumulating in the cracks. **Please note: Gaskets are not needed for panel upgrades of Acre and HDPE material.**

12. Now you are ready to install the completed front frame of your enclosure. Place the front frame into position, making sure that the plastic connecting pieces on the front frame (the 4 corner connectors and the 2 middle connectors) are lined up with their corresponding aluminum tubes.



Begin hammering the connecting pieces into position using your mallet, before fully pounding all the connecting pieces into position, begin to install the provided bolt that is included in the hardware pack (refer to **Step 6** as this is the finishing step for the top support tubes of the enclosure). Simply line the bolt to the corresponding top support tube. With your Phillip's head screwdriver, make a couple of turns to connect the bolt. Do not fully tighten the bolt. This will allow space to complete the installation of the connecting pieces. Once you have all



connecting pieces fully inserted, you can begin to finish tightening the bolts to the top support tubes. **Please note: It is best to work from corner to adjacent corner, then to the middle, and then to the opposite corner, working your way around in this manner. This allows for adjustments to be made as you insert the plastic connecting pieces into the front frame. Also, make sure the panels are lined up and skidding into the grooves. DO NOT FULLY HAMMER A PLASTIC CONNECTING PIECE BEFORE ESTABLISHING THE REMAINING CONNECTING PIECES, AS THIS CAN MAKE THE REMAINING ASSEMBLY MORE DIFFICULT.**

13. Now that the front is in place and the screws are tight, you can now rotate the enclosure so that its standing upright and ready for the next step.



Using your Phillip's head screwdriver and your pliers (you can also use an Adjustable wrench), insert the bolt provided through the hole in the middle of your enclosure and into and through the **Middle Front support tube**. Thread the provided nut onto the



bolt. Hold the nut in position with either your pliers or an adjustable wrench and tighten the bolt using your screwdriver.

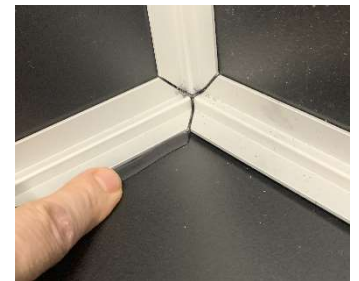
14. Your new enclosure is now assembled and it's time for the final steps. If your panels require gaskets, you will notice a bag which contains all the gaskets needed. These will gasket the inside to ensure a tight fit between the panels and the aluminum tubing and will not only strengthen your new enclosure, they will also help to keep any loose substrate from getting between the gaps. **Note: the easiest way to complete this step is to rotate your enclosure, if possible, as you seal up each panel. Also, some materials like HDPE and ACRE are thicker and do not require the gaskets.**



To get a tight fit into the corners, cut a 45-degree angle with some scissors as shown.

Now you can begin with any corner and firmly push the gasket into the gap, being careful to not stretch the gasket as you go.

Once you have the gasket inserted, **the screen rolling tool** (provided) will help you to push the gaskets into the joints as they are designed to be a tight fit.

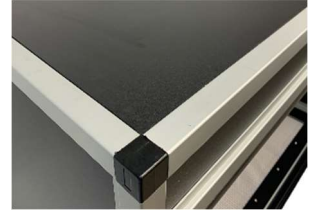


For the corners, carefully notch out the gasket with the scissors so that the gasket will go tight into each corner. Note: if you are planning to keep your new enclosure at a high humidity or want to add bioactive soils, you may also want to run a liberal amount of silicone over the below ground gaskets and joints in the aluminum frames in order to block any moisture or water from escaping through the gaskets. **Always allow at least 24 to 48 hours for your silicone to cure and the strong smell to dissipate before adding your pet.**

15. Now that your new enclosure is assembled and sealed, it's almost time to position it in its permanent location but before then, it's time to attach the extra **Bottom Panels labelled 46 ½ x 46"** to the base of the enclosure. This will then make the bottom of your enclosure flat and will then withstand heavy loads of substrate, rocks or logs etc.



To begin this final step, rotate your enclosure so that it's on its top then using the complimentary silicone, run it around all four sides and across the middle of the base, being careful to stay back 1 inch from the edges as shown. Now guide the last panel into position to fully reinforce the base of your new enclosure.

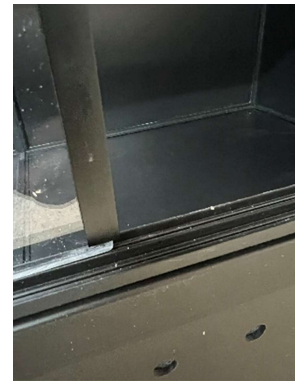


16. After allowing a little time for the silicone to bond, your new enclosure is now ready to position in its permanent location and decorate, before adding the polycarbonate **Doors (47 ½ x 29 ½)**. To add the doors, slip the first door up and in the rear track and the front door into the front track. **The Clear Door Handles are optional.**



Also optional are our **Door Security** bars. If you are planning to use these (to prevent snakes etc. from squeezing through the flexible Polycarbonate doors), simply add some silicone into the groove and then slip them onto the middle, where the doors overlap.

Please note: they are cut to allow for the doors to still be removed while decorating or cleaning so be sure that they are positioned just above the bottom tracks as shown. This should leave you with a ¾ " gap at the top and a ¼" gap at the bottom when set in place.



Should you run into any issues or have any questions regarding this assembly, or anything else, please contact our customer service team for help. Details for all our contact information can be found on the below link:

<https://customreptilehabitats.com/pages/contact-us>

Or use our QR code on your Smart Phone to find this and our other assembly instructions and videos.

