



Shin Hung Co., Ltd.
150, DAESIN-RO, JINJU-SI, GYEONGSANGNAM-DO, KOREA
Tel:+82 55 752 6511 Fax:+82 55 752 6535
<http://www.shinkotire.co.kr> E-mail:export@shinkotire.co.kr

GROUP COMPANY

Shinko Co., Ltd.
147, 3-Chome, Takochi-Higashi, Yao City, Osaka 581-0053, Japan
Tel:+81 6 6709 6661 Fax:+81 6 6709 6652

Kyushu Shinko Co., Ltd.
1945-1, Oaza, Takajo-cho, Kitamorogata, Miyazaki 885-1203, Japan
Tel:+81 986 58 2560 Fax:+81 986 58 3736

Jinzhou Xinxing Rubber Production Co., Ltd.
China Liaoning Jinzhou Economic Development Experiment Zone
Investment Bureau, 121221, China
Tel:+86 416 790 0661 Fax:+86 416 790 0667 E-mail:shinkotire@126.com



THE SHINKO STORY

Established in 1946, the Shinko Group began as a manufacturer of bicycle tires and tubes in Osaka, Japan that today has become a burgeoning manufacturer of rubber products

In 1988 the Shinko Group purchased the motorcycle tire technology and molds from Yokohama Rubber Co., and began production of these products under the Shinko Tire brand. With manufacturing based in South Korea and design based in Japan, the company has seamlessly combined Japanese engineering and design principles with South Korean production and quality control standards.

Shinko combined advanced Japanese Technology and Superior South Korean workmanship to produce a quality product which received the KS(Korean standard) as well as E-Mark, ISO 9001.

Today Shinko Tire produces approximately 200,000 motorcycle tires per month.



SHINKO MOTORCYCLE TIRE
FOR YOU LOVE THE WIND

SR777 WHITE WALL(WW) SERIES

NEW PATTERN DEVELOPED FOR HARLEY DAVIDSON

Specifically designed for cruiser machines and is available in a multitude of sizes to fit many V-Twin and metric cruiser models.



[FRONT]

[REAR]

• Features include

- Higher mileage and load capacity
- 6 ply (H.D. - Heavy Duty) version with reinforced carcass
- H & V rated tubeless, 4 or 6 ply rated

SR	TIRE SIZE	LOAD INDEX	SPEED SYMBOL	RECOM RIM	OVERALL DIAMETER	WIDTH	DOT	PLY RATING	F / R	TYPE TL/TT	MAX LOAD	MAX PSI	PERMITTED RIM
SR777	130/90B16 WW	73	H	3.00	25.20	5.08	Y	6	F	TL	805	49	2.50-3.50
SR777	150/80-16 WW	71	H	3.50	25.43	5.91	Y	4	F	TL	761	42	3.00-4.25
SR777	130/80-17 WW	65	H	3.00	25.20	5.08	Y	4	F	TL	639	42	2.50-3.50
SR777	140/80-17 WW	69	H	3.50	25.83	5.59	Y	4	F	TL	716	42	2.75-3.75
SR777	130/70B18 WW	69	H	3.50	25.16	5.08	Y	6	F	TL	716	42	3.00-4.00
SR777	100/90-19 WW	61	H	2.50	26.10	3.98	Y	6	F	TL	567	42	2.15-2.75
SR777	130/60B19 WW	67	H	3.50	25.16	5.08	Y	6	F	TL	677	42	3.00-4.00
SR777	90/90-21 WW	54	H	2.15	27.36	3.54	Y	4	F	TL	467	42	1.85-2.50
SR777	120/70-21 WW	68	V	3.50	27.60	4.80	Y	6	F	TL	694	42	2.75-3.75
SR777	130/60-23 WW	75	H	3.50	29.13	5.08	Y	6	F	TL	853	42	3.00-4.00
SR777	150/90B15 WW	80	H	3.50	25.63	5.91	Y	6	R	TL	992	42	3.00-4.25
SR777	170/80B15 WW	83	H	4.00	25.71	6.69	Y	6	R	TL	1074	42	3.50-4.50
SR777	180/70B15 WW	82	H	5.00	24.92	7.09	Y	6	R	TL	1047	42	4.25-5.50
SR777	130/90B16 WW	73	H	3.00	25.20	5.08	Y	6	R	TL	805	49	2.50-3.50
SR777	MU85B16 WW	77	H	3.50	25.92	5.60	Y	6	R	TL	908	40	3.00-3.50
SR777	150/80B16 WW	77	H	3.50	25.43	5.91	Y	6	R	TL	908	42	3.00-4.25
SR777	170/70-16 WW	75	H	4.50	25.28	6.61	Y	4	R	TL	853	42	4.00-5.50
SR777	180/65B16 WW	81	H	5.00	25.20	7.09	Y	6	R	TL	1018	49	4.25-5.50
SR777	160/70-17 WW	79	H	4.50	25.83	6.34	Y	6	R	TL	963	42	3.75-5.00
SR777	140/70B18 WW	72	H	3.75	25.71	5.47	Y	6	R	TL	738	42	3.50-4.50
SR777	150/70B18 WW	76	H	4.25	26.26	5.94	Y	6	R	TL	882	42	3.50-4.50
SR777	180/55B18 WW	84	H	5.50	25.79	7.01	Y	6	R	TL	1102	42	5.50-6.00

SR777 ALL BLACK(AB) SERIES

NEW PATTERN DEVELOPED FOR HARLEY DAVIDSON

Specifically designed for cruiser machines and is available in a multitude of sizes to fit many V-Twin and metric cruiser models.



Paul Yaffe
"The Shinko 777 26" tire drastically improves the handling of the bike."



[FRONT] [REAR]

• Features include

- Higher mileage and load capacity
- 6 ply (H.D. - Heavy Duty) version with reinforced carcass
- H & V rated tubeless, 4 or 6 ply rated
- 180/55R17 : RADIAL
- 6.5 X 20 : NO E-mark

SR	TIRE SIZE	LOAD INDEX	SPEED SYMBOL	RECOM RIM	OVERALL DIAMETER	WIDTH	DOT	PLY RATING	F / R	TYPE TL/TT	MAX LOAD	MAX PSI	PERMITTED RIM
SR777	130/90B16	73	H	3.00	25.20	5.08	Y	6	F	TL	805	49	2.50~3.50
SR777	150/80-16	71	H	3.50	25.43	5.91	Y	4	F	TL	761	42	3.00~4.25
SR777	120/90-17	64	H	2.75	25.51	4.69	Y	4	F	TL	617	42	2.50~3.00
SR777	130/80-17	65	H	3.00	25.20	5.08	Y	4	F	TL	639	42	2.50~3.50
SR777	140/80-17	69	H	3.50	25.83	5.59	Y	4	F	TL	716	42	2.75~3.75
SR777	120/90-18	65	H	2.75	26.50	4.69	Y	4	F	TL	639	33	2.50~3.00
SR777	130/70B18	69	H	3.50	25.16	5.08	Y	6	F	TL	716	42	3.00~4.00
SR777	100/90-19	61	H	2.50	26.10	3.98	Y	6	F	TL	567	42	2.15~2.75
SR777	110/90-19	62	H	2.50	26.81	4.29	Y	4	F	TL	584	42	2.15~3.00
SR777	130/60B19	67	H	3.50	25.16	5.08	Y	6	F	TL	677	42	3.00~4.00
SR777	6.5X20	77	H	5.00	28.50	6.50	Y	4	F	TL	908	41	3.75~5.00
SR777	80/90-21	54	H	1.85	26.65	3.15	Y	6	F	TL	467	42	1.60~2.15
SR777	90/90-21	54	H	2.15	27.36	3.54	Y	4	F	TL	467	42	1.85~2.50
SR777	120/70-21	68	V	3.50	27.60	4.80	Y	6	F	TL	694	42	2.75~3.75
SR777	130/60-23	75	H	3.50	29.13	5.08	Y	6	F	TL	853	42	3.00~4.00
SR777	120/50-26	73	H	3.50	30.83	4.72	Y	6	F	TL	805	42	
SR777	150/90B15	80	H	3.50	25.63	5.91	Y	6	R	TL	992	42	3.00~4.25
SR777	160/80-15	74	H	3.75	25.08	6.38	Y	4	R	TL	827	42	3.50~4.50
SR777	170/80B15	83	H	4.00	25.71	6.69	Y	6	R	TL	1074	42	3.50~4.50
SR777	180/70B15	82	H	5.00	24.92	7.09	Y	6	R	TL	1047	42	4.25~5.50
SR777	130/90B16	73	H	3.00	25.20	5.08	Y	6	R	TL	805	49	2.50~3.50
SR777	140/90B16	77	H	3.50	25.91	5.59	Y	6	R	TL	908	42	2.75~3.75
SR777	MU85B16	77	H	3.50	25.92	5.60	Y	6	R	TL	908	40	3.00~3.50
SR777	150/80B16	77	H	3.50	25.43	5.91	Y	6	R	TL	709	42	3.00~4.25
SR777	170/70-16	75	H	4.50	25.28	6.61	Y	4	R	TL	853	42	4.00~5.50
SR777	180/65B16	81	H	5.00	25.20	7.09	Y	6	R	TL	1018	49	4.25~5.50
SR777	160/70-17	79	H	4.50	25.83	6.34	Y	6	R	TL	963	42	3.75~5.00
SR777	180/55R17	73	V	5.50	24.80	7.00	Y	4	R	TL	805	42	5.50~6.00
SR777	140/70B18	72	H	3.75	25.71	5.47	Y	6	R	TL	738	42	3.50~4.50
SR777	150/70B18	76	H	4.25	26.26	5.94	Y	6	R	TL	882	42	3.50~4.50
SR777	180/55B18	84	H	5.50	25.79	7.01	Y	6	R	TL	1102	42	5.50~6.00

SR777 H.D. Reflector SERIES

NEW PATTERN DEVELOPED FOR HARLEY DAVIDSON

Be Safe. Be Seen.



We introduce the Reflector, the next evolution in motorcycle tire technology. Almost completely unnoticeable until light hits the reflective material on the sidewall and then boom ...the sidewall of the Reflector tire lights up. Be Safe. Be Seen.

With a newly redesigned reinforced carcass, the 777 H.D. has higher load ratings and higher mileage. Heavier (Aramid) belting provides ample load capacity while also giving more stability and longer life. The 777 H.D. Reflector is specifically designed for cruiser machines and available in a multitude of sizes to fit many V-Twin and metric cruiser models.

- Now available in reflective sidewall in select sizes
- Higher mileage and load capacity
- 6 ply (H.D. - Heavy Duty) version with reinforced carcass
- H rated tubeless, 6 ply rated



[FRONT] [REAR]

SR	TIRE SIZE	LOAD INDEX	SPEED SYMBOL	RECOM RIM	OVERALL DIAMETER	WIDTH	DOT	PLY RATING	F / R	TYPE TL/TT	MAX LOAD	MAX PSI	PERMITTED RIM
SR777	100/90-19 REF	61	H	2.50	26.10	3.98	Y	6	F	TL	567	42	2.15~2.75
SR777	130/90B16 REF	73	H	3.00	25.20	5.08	Y	6	R	TL	805	49	2.50~3.50
SR777	150/80B16 REF	77	H	3.50	25.43	5.91	Y	6	R	TL	908	42	3.00~4.25
SR777	180/65B16 REF	81	H	5.00	25.20	7.09	Y	6	R	TL	1018	49	4.25~5.50



F250 / R250 SERIES

Modern directional tread design for excellent wet weather adhesion and long stable mileage. Advanced Kevlar breaker adds stability at high loads. Front tire has single radius profile for light steering and increased stability. Rear tire uses dual radius profile for larger foot print, increased traction and mileage.
 ★AVAILABLE BOTH WHITEWALL(WW) AND BLACKWALL.



• Features include

- Aramid belt for high load stability
- Available in white side wall
- H rated tubeless

SR	TIRE SIZE	LOAD INDEX	SPEED SYMBOL	RECOM RIM	OVERALL DIAMETER	WIDTH	DOT	PLY RATING	F / R	TYPE TL/TT	MAX LOAD	MAX PSI	PERMITTED RIM
F250	MT90-16	73	H	3.00	25.59	5.12	Y	4	F	TL	805	41	2.50-3.50
F250	MJ90-19	56	H	2.15	25.59	3.50	Y	4	F	TL	494	33	1.85-2.50
F250	MH90-21	56	H	1.85	27.01	3.15	Y	4	F	TT	494	41	1.85-2.15
F250	MT90-16WW	73	H	3.00	25.59	5.12	Y	4	F	TL	805	41	2.50-3.50
R250	MT90-16	74	H	3.00	25.59	5.12	Y	6	R	TL	827	41	2.50-3.50
R250	MT90-16WW	74	H	3.00	25.59	5.12	Y	6	R	TL	827	41	2.50-3.50

611F ALL BLACK / 718R ALL BLACK SERIES

The 611 front and 718 rear feature directional tread designs. Paired together they make an ideal matched set with excellent adhesion in both wet and dry conditions.



• Features include

- Aramid belt for added stability under high loads
- H rated (130 mph) tubeless

SR	TIRE SIZE	LOAD INDEX	SPEED SYMBOL	RECOM RIM	OVERALL DIAMETER	WIDTH	DOT	PLY RATING	F / R	TYPE TL/TT	MAX LOAD	MAX PSI	PERMITTED RIM
611F	MT90-16	71	H	3.00	25.59	5.12	Y	4	F	TL	761	32	2.50-3.50
611F	MM90-19	61	H	2.15	26.10	3.74	Y	4	F	TL	567	36	1.85-2.50
611F	MH90-21	56	H	1.85	27.01	3.15	Y	4	F	TL	494	33	1.85-2.15
718R	MT90-16	74	H	3.00	25.59	5.12	Y	6	R	TL	761	42	2.50-3.50

F280 / R280 SERIES

SPORT TOURING

Modern tread design for directional water dispersion, long mileage and even characteristics.



• Features include

- "V" rated(149MPH), Tubeless
- Kevlar belted construction rear tires
- Full four ply rating front
- Very stable at high load

SR	TIRE SIZE	LOAD INDEX	SPEED SYMBOL	RECOM RIM	OVERALL DIAMETER	WIDTH	DOT	PLY RATING	F / R	TYPE TL/TT	MAX LOAD	MAX PSI	PERMITTED RIM
F280	100/90-16	54	V	2.50	23.07	3.98	Y	4	F	TL	467	42	2.15-2.75
F280	100/80-17	52	V	2.50	23.31	3.98	Y	4	F	TL	441	42	2.15-2.75
F280	110/70-17	54	V	3.00	23.07	4.33	Y	4	F	TL	467	42	2.50-3.50
F280	110/80-17	57	V	2.50	23.94	4.29	Y	4	F	TL	507	42	2.15-3.00
F280	110/80-18	58	V	2.50	24.92	4.29	Y	4	F	TL	520	42	2.15-3.00
R280	120/80-17	61	V	2.75	24.52	4.69	Y	4	R	TL	567	42	2.50-3.00
R280	140/70-17	66	V	3.75	24.72	5.47	Y	4	R	TL	661	42	3.50-4.50
R280	150/70-17	69	V	4.25	25.28	5.94	Y	4	R	TL	716	42	3.50-4.50
R280	140/70-18	67	V	3.75	25.71	5.47	Y	4	R	TL	677	42	3.50-4.50

F230 / R230 SERIES

TOUR MASTER

Our goal was to design a tire capable of carrying high loads, for long distances in wet or dry weather. In addition to achieving that goal, we added the belted construction for great handling and ride comfort. Staggered tread ignores rain grooves and offers a quiet ride.
 ★THE PERFECT LONG DISTANCE TIRE



• Features include

- Designed for long distance, high speed riding
- Aramid belted
- Staggered tread design offers a quiet ride with excellent handling
- S, H or V rated tubeless, 4 ply rated

SR	TIRE SIZE	LOAD INDEX	SPEED SYMBOL	RECOM RIM	OVERALL DIAMETER	WIDTH	DOT	PLY RATING	F / R	TYPE TL/TT	MAX LOAD	MAX PSI	PERMITTED RIM
F230	130/90-16	67	V	3.00	25.20	5.08	Y	4	F	TL	677	42	3.00-3.50
F230	150/80-16	71	H	3.50	25.43	5.91	Y	4	F	TL	761	42	3.00-4.25
F230	120/90-17	64	H	2.75	25.51	4.69	Y	4	F	TL	617	42	2.50-3.00
F230	150/80-17	72	H	3.50	26.46	5.91	Y	4	F	TL	783	42	3.00-4.25
F230	3.00-18	47	S	1.85	24.69	3.15	Y	4	F	TT	386	36	1.60-2.15
F230	100/90-18	56	V	2.50	25.08	3.98	Y	4	F	TL	494	42	2.15-2.75
F230	110/90-18	61	V	2.50	25.79	4.29	Y	4	F	TL	567	42	2.15-3.00
F230	120/90-18	65	V	2.75	26.50	4.69	Y	4	F	TL	639	42	2.75-3.00
F230	100/90-19	57	V	2.50	26.10	3.98	Y	4	F	TL	507	42	2.15-2.75
F230	110/90-19	62	V	2.50	26.81	4.29	Y	4	F	TL	584	42	2.15-3.00
F230	80/90-21	48	H	1.85	26.65	3.15	Y	4	F	TL	397	42	1.60-2.15
R230	130/90-15	66	V	3.00	24.21	5.08	Y	4	R	TL	661	42	2.50-3.50
R230	140/90-15	76	V	3.50	24.92	5.59	Y	4	R	TL	882	42	2.75-3.75
R230	150/90-15	80	V	3.50	25.63	5.91	Y	4	R	TL	992	42	3.00-4.25
R230	170/80-15	83	V	4.00	25.71	6.69	Y	4	R	TL	1074	42	3.50-4.50
R230	180/70-15	76	H	5.00	24.92	7.09	Y	4	R	TL	882	41	4.25-5.50
R230	130/90-16	73	V	3.00	25.20	5.08	Y	4	R	TL	805	42	2.50-3.50
R230	140/90-16	77	V	3.50	25.91	5.59	Y	4	R	TL	908	42	3.50-3.75
R230	150/80-16	71	H	3.50	25.40	5.90	Y	4	R	TL	761	42	3.00-4.25
R230	130/90-17	74	V	3.00	26.22	5.08	Y	4	R	TL	827	42	2.75-3.50
R230	120/90-18	71	V	2.75	26.50	4.69	Y	4	R	TL	761	42	2.50-3.00
R230	130/90-18	69	V	3.00	27.20	5.08	Y	4	R	TL	716	42	2.50-3.50

SR 712 SERIES

The 712 is designed for mileage and performance with a staggered tread pattern that provides excellent wet weather performance.



• Features include

- Designed for mileage and performance
- Staggered tread pattern provides excellent wet weather performance
- H rated tubeless, 4 or 6 ply nylon carcass

SR	TIRE SIZE	LOAD INDEX	SPEED SYMBOL	RECOM RIM	OVERALL DIAMETER	WIDTH	DOT	PLY RATING	F / R	TYPE TL/TT	MAX LOAD	MAX PSI	PERMITTED RIM
SR712F	120/80-16	60	H	2.75	23.54	4.69	Y	4	F	TL	551	40	2.50-3.00
SR712F	3.00-18	55	H	1.85	24.69	3.15	Y	6	F	TL	481	41	1.85-2.15
SR712F	100/90-18	56	H	2.50	25.08	3.98	Y	4	F	TL	494	40	2.15-2.75
SR712F	100/90-19	57	H	2.50	26.10	3.98	Y	4	F	TL	507	40	2.15-2.75
SR712F	110/90-19	62	H	2.50	26.81	4.29	Y	4	F	TL	567	40	2.15-3.00
SR712R	140/90-15	70	H	3.50	24.92	5.59	Y	4	R	TL	739	40	2.75-3.75
SR712R	170/80-15	77	H	4.00	25.71	6.69	Y	4	R	TL	908	42	3.50-4.50
SR712R	130/90-16	67	H	3.00	25.20	5.08	Y	4	R	TL	677	40	2.50-3.50
SR712R	130/90-17	68	H	3.00	26.22	5.08	Y	4	R	TL	694	40	2.50-3.50
SR712R	150/70-17	69	H	4.25	25.28	5.94	Y	4	R	TL	716	40	3.50-4.50
SR712R	3.50-18	60	H	2.15	25.55	3.66	Y	6	R	TL	551	41	1.85-2.50
SR712R	100/90-18	56	H	2.50	25.08	3.98	Y	4	R	TL	494	40	2.15-2.75
SR712R	110/90-18	61	H	2.50	25.79	4.29	Y	4	R	TL	567	40	2.15-3.00
SR712R	120/90-18	65	H	2.75	26.50	4.69	Y	4	R	TL	639	40	2.50-3.00

SE-890 SERIES SUPERIOR RADIAL (STREET / CRUISER TIRE)

Specially designed tread efficiently disperses water in wet road conditions.



• Features include

- Tubeless, DOT approved
- Speed Rating : H(130mph)

SR	TIRE SIZE	LOAD INDEX	SPEED SYMBOL	RECOM RIM	OVERALL DIAMETER	WIDTH	DOT	PLY RATING	F / R	TYPE TL/TT	MAX LOAD	MAX PSI	PERMITTED RIM
SE-890	150/80R17	72	H	3.50	26.46	5.91	Y	R	F	TL	783	42	3.50~4.25
SE-890	130/70R18	63	H	3.50	25.16	5.08	Y	R	F	TL	600	42	3.50~4.00
SE-890	160/80R16 6PR	81	H	3.75	25.91	6.30	Y	R	R	TL	1019	42	3.75~4.50
SE-890	180/60R16	74	H	5.00	24.49	7.09	Y	R	R	TL	827	42	5.00~5.50
SE-890	180/70R16	77	H	5.00	25.91	7.09	Y	R	R	TL	908	42	5.00~5.50

SR733 / SR734 / SR735 SERIES

Popular touring/cruiser tread pattern available in front (SR733), rear (SR734) and both (SR735) versions.



• Features include

- Popular touring/cruiser tread pattern
- 4 ply rated
- Tubeless

SR	TIRE SIZE	LOAD INDEX	SPEED SYMBOL	RECOM RIM	OVERALL DIAMETER	WIDTH	DOT	PLY RATING	F / R	TYPE TL/TT	MAX LOAD	MAX PSI	PERMITTED RIM
SR733	130/70-18	63	H	3.50	25.16	5.08	Y	4	F	TL	600	40	3.00~4.00
SR733	100/90-19	57	H	2.50	26.10	3.98	Y	4	F	TL	507	42	2.15~2.75
SR734	130/90-15	66	P	3.00	24.21	5.08	Y	4	R	TL	661	33	3.00~3.50
SR734	150/80-15	70	S	3.50	24.45	5.91	Y	4	R	TL	739	40	3.00~4.25
SR734	170/80-15	77	H	4.00	25.71	6.69	Y	4	R	TL	908	42	3.50~4.50
SR734	160/80-16	75	H	3.75	26.06	6.30	Y	4	R	TL	853	40	3.50~4.50
SR735	110/90-16	59	S	2.50	23.78	4.29	Y	4	B	TL	536	33	2.15~3.00

E240 SERIES TIRES FOR CLASSIC MOTORCYCLES CLASSIC 240

Compounded for long mileage. Kevlar breaker offsets tread distortion for better grip and durability. 90% aspect ratio, classic profile and tread pattern.
 *AVAILABLE BOTH WHITEWALL(WW) AND BLACKWALL



• Features include

- Combines a classic design
- Modern construction & performance

SR	TIRE SIZE	LOAD INDEX	SPEED SYMBOL	RECOM RIM	OVERALL DIAMETER	WIDTH	DOT	PLY RATING	F / R	TYPE TL/TT	MAX LOAD	MAX PSI	PERMITTED RIM
E240	MT90-16	74	H	3.00	25.59	5.12	Y	4	B	TT	827	41	2.50~3.50
E240	100/90-19 NEW	63	H	2.50	26.10	3.98	Y	6	F	TL	567	42	2.15~2.75
E240	MT90-16 WW	74	H	3.00	25.59	5.12	Y	4	B	TT	830	41	2.50~3.50
E240	100/90-19 WW NEW	63	H	2.50	26.10	3.98	Y	6	F	TL	567	42	2.15~2.75
E240	MT90-16 W-2	74	H	3.00	25.59	5.12	Y	4	B	TT	830	41	2.50~3.50

E270 SERIES SUPER CLASSIC 270

The classic full aspect ratio sawtooth design. Full four ply rating or six ply rating nylon carcass for extended wear with classic appearance.
 *AVAILABLE BOTH WHITEWALL(WW) AND BLACKWALL



• Features include

- Full aspect ratio saw-tooth design
- Speed Rating : S (118mph)
- Speed Rating : H (130mph)

SR	TIRE SIZE	LOAD INDEX	SPEED SYMBOL	RECOM RIM	OVERALL DIAMETER	WIDTH	DOT	PLY RATING	F / R	TYPE TL/TT	MAX LOAD	MAX PSI	PERMITTED RIM
E270	5.00-16	69	S	3.00	26.38	5.12	Y	4	B	TT	716	33	2.75~3.25
E270	4.00-18 NEW	64	H	2.15	26.42	4.09	Y	4	B	TT	617	41	2.15~2.75
E270	4.50-18 NEW	70	H	2.15	27.20	4.37	Y	4	B	TT	739	41	2.15~2.50
E270	4.00-19	61	H	2.15	27.40	4.10	Y	4	F	TT	567	42	2.15~2.50
E270	3.00-21 NEW	57	S	1.85	27.68	3.15	Y	6	F	TT	507	41	1.85~2.15
E270	5.00-16 WW	69	S	3.00	26.38	5.12	Y	4	B	TT	716	33	2.75~3.25
E270	4.00-18 WW NEW	64	H	2.15	26.42	4.09	Y	4	B	TT	617	41	2.15~2.75
E270	4.50-18 WW NEW	70	H	2.15	27.20	4.37	Y	4	B	TT	739	41	2.15~2.50
E270	4.00-19 WW	61	H	2.15	27.40	4.10	Y	4	F	TT	567	42	2.15~2.50
E270	3.00-21 WW NEW	57	S	1.85	27.68	3.15	Y	6	F	TT	507	41	1.85~2.15
E270	5.00-16 W-2	69	S	3.00	26.38	5.12	Y	4	B	TT	716	33	2.75~3.25
E270	4.00-19 W-2	61	H	2.15	27.40	4.10	Y	4	F	TT	567	42	2.15~2.50

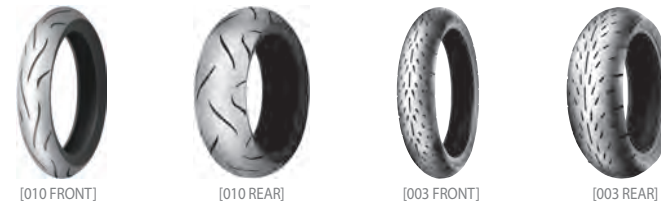
016 SERIES VERGE 2X RADIAL (SPORT BIKE TIRE) - JLSB

Our(Shinko) 016 VERGE 2X RADIAL tire is Dual-compound performance tire with the best mileage compound in the center of the tread for durability, and the best grip compound on the shoulders for cornering. All tires(Front & Rear) are 0° STEEL-BELTED SPORT RADIAL TIRE FEATURES ZERO DEGREE JLSB (Joint-Less Steel Belted) state-of-the-art technology for added stability and strength.



JLSB(Joint Less Steel Belted)
0° STEEL-BELTED SPORT RADIAL TIRE FEATURES ZERO DEGREE JLSB (Joint-Less Steel Belted) state-of-the-art technology for added stability and strength

SR	TIRE SIZE	LOAD INDEX	SPEED SYMBOL	RECOM RIM	OVERALL DIAMETER	WIDTH	DOT	PLY RATING	F / R	TYPE TL/TT	MAX LOAD	MAX PSI	PERMITTED RIM
F016	120/60ZR17 JLSB	55	(W)	3.50	22.68	4.80	Y	R	F	TL	481	42	3.50~3.75
F016	120/70ZR17 JLSB	58	(W)	3.50	23.62	4.80	Y	R	F	TL	520	42	3.50~3.75
R016	160/60ZR17 JLSB	69	(W)	4.50	24.57	6.34	Y	R	R	TL	716	42	4.25~5.00
R016	180/55ZR17 JLSB	73	(W)	5.50	24.80	7.01	Y	R	R	TL	805	42	5.50~6.00
R016	190/50ZR17 JLSB	73	(W)	6.00	24.49	7.48	Y	R	R	TL	805	42	5.50~6.00
R016	190/55ZR17 JLSB	75	(W)	6.00	25.28	7.48	Y	R	R	TL	853	42	5.50~6.00
R016	200/50ZR17 JLSB	75	(W)	6.25	24.88	7.87	Y	R	R	TL	853	42	6.00~6.50



010 SERIES APEX RADIAL

We(Shinko) introduces a tread designed for serious sportbike riding with the new 010 APEX RADIAL. The 010 APEX RADIAL rear tire features Zero Degree JLSB (Joint-Less Steel Belted) state-of-the-art technology for added stability and strength, while the 010 Apex front tire is Aramid belted for enhanced high-speed performance.

*(W) speed rating(Above 168 mph)

SR	TIRE SIZE	LOAD INDEX	SPEED SYMBOL	RECOM RIM	OVERALL DIAMETER	WIDTH	DOT	PLY RATING	F / R	TYPE TL/TT	MAX LOAD	MAX PSI	PERMITTED RIM
F010	120/60ZR17	55	(W)	3.50	22.68	4.80	Y	R	F	TL	481	42	3.50~3.75
F010	120/70ZR17	58	(W)	3.50	23.62	4.80	Y	R	F	TL	520	42	3.50~3.75
R010	150/60ZR17 JLSB	66	(W)	4.25	24.09	5.94	Y	R	R	TL	661	42	4.00~4.50
R010	160/60ZR17 JLSB	69	(W)	4.50	24.57	6.34	Y	R	R	TL	716	42	4.25~5.00
R010	170/60ZR17 JLSB	72	(W)	4.50	25.04	6.61	Y	R	R	TL	783	42	4.25~5.50
R010	180/55ZR17 JLSB	73	(W)	5.50	24.80	7.01	Y	R	R	TL	805	42	5.50~6.00
R010	190/50ZR17 JLSB	73	(W)	6.00	24.49	7.48	Y	R	R	TL	805	42	5.50~6.00
R010	190/55ZR17 JLSB	75	(W)	6.00	25.28	7.48	Y	R	R	TL	853	42	5.50~6.00
R010	200/50ZR17 JLSB	75	(W)	6.25	24.88	7.87	Y	R	R	TL	853	42	6.00~6.50

003 SERIES STEALTH & ULTRA SOFT STEALTH RADIAL

The near slick dimple design has remained popular with drag racers, production racers and the serious sports rider. Compounded for rapid warm up for slick like performance
★ AVAILABLE IN ULTRA SOFT COMPOUND

SR	TIRE SIZE	LOAD INDEX	SPEED SYMBOL	RECOM RIM	OVERALL DIAMETER	WIDTH	DOT	PLY RATING	F / R	TYPE TL/TT	MAX LOAD	MAX PSI	PERMITTED RIM
F003	120/60ZR17	55	W	3.50	22.68	4.80	Y	R	F	TL	481	42	3.50~3.75
F003	120/70ZR17	58	W	3.50	23.62	4.80	Y	R	F	TL	520	42	3.50~3.75
R003	150/60ZR17	66	W	4.25	24.09	5.94	Y	R	R	TL	536	42	4.00~4.50
R003	160/60ZR17	69	W	4.50	24.57	6.34	Y	R	R	TL	716	42	4.25~5.00
R003	170/60ZR17	72	W	4.50	25.04	6.61	Y	R	R	TL	783	42	4.25~5.50
R003	180/55ZR17	73	W	5.50	24.80	7.01	Y	R	R	TL	805	42	5.50~6.00
R003	190/50ZR17	73	W	6.00	24.49	7.48	Y	R	R	TL	805	42	5.50~6.00
R003	200/50ZR17	75	W	6.25	24.88	7.87	Y	R	R	TL	853	42	6.00~6.50
R003	180/55ZR18	74	W	5.50	25.79	7.01	Y	R	R	TL	827	42	5.50~6.00
F003	120/60ZR17 U-SOFT	55	W	3.50	22.68	4.80	Y	R	F	TL	481	42	3.50~3.75
F003	120/70ZR17 U-SOFT	58	W	3.50	23.62	4.80	Y	R	F	TL	520	42	3.50~3.75
R003	150/80ZR16 U-SOFT	71	W	3.50	25.43	5.91	Y	R	R	TL	760	42	3.50~4.25
R003	180/55ZR17 U-SOFT	73	W	5.50	24.80	7.01	Y	R	R	TL	805	42	5.50~6.00
R003	190/50ZR17 U-SOFT	73	W	6.00	24.49	7.48	Y	R	R	TL	805	42	5.50~6.00
R003	200/50ZR17 U-SOFT	75	W	6.25	24.88	7.87	Y	R	R	TL	853	42	6.00~6.50



005 SERIES

ADVANCE RADIAL



[FRONT] [REAR]

• Features include

- Large block typed tread pattern pursue excellent braking, cornering and acceleration
- Special compound improves grip and durability
- Designed for width and angle of tread groove drain water efficiently on wet surface
- Kevlar belts upgrade the performance of high speed
- TIRE SIZE 120/70-21 BIAS TIRE

SR	TIRE SIZE	LOAD INDEX	SPEED SYMBOL	RECOM RIM	OVERALL DIAMETER	WIDTH	DOT	PLY RATING	F / R	TYPE TL/TT	MAX LOAD	MAX PSI	PERMITTED RIM
F005	120/60ZR17	55	W	3.50	22.68	4.80	Y	R	F	TL	481	42	3.50~3.75
F005	120/70ZR17	58	W	3.50	23.62	4.80	Y	R	F	TL	520	42	3.50~3.75
F005	130/70R18	63	V	3.50	25.16	5.08	Y	R	F	TL	600	42	3.50~4.00
F005	120/70-21	62	V	3.50	27.60	4.80	Y	4	F	TL	584	42	2.75~3.75
R005	160/60ZR17	69	W	4.50	24.57	6.34	Y	R	R	TL	716	42	4.25~5.00
R005	170/60ZR17	72	W	4.50	25.04	6.61	Y	R	R	TL	783	42	4.25~5.50
R005	180/55ZR17	73	W	5.50	24.80	7.01	Y	R	R	TL	805	42	5.50~6.00
R005	190/50ZR17	73	W	6.00	24.49	7.48	Y	R	R	TL	805	42	5.50~6.00
R005	200/50ZR17	75	W	6.25	24.88	7.87	Y	R	R	TL	853	42	6.00~6.50
R005	240/40R18	79	V	8.50	25.55	9.45	Y	R	R	TL	963	42	8.00~9.00



[006 FRONT] [006 REAR] [009 FRONT] [009 REAR]

006 SERIES

PODIUM RADIAL

Designed for the characteristics of high performance of tire either on wet surface or on dry surface. Streamline typed tread pattern improves the drainage and reduces the rotation resistance resulting in the tire at the high speed. Smooth profile of shoulder part was designed for securing superior grip and exceptional stability at all lean angles of high speed.

SR	TIRE SIZE	LOAD INDEX	SPEED SYMBOL	RECOM RIM	OVERALL DIAMETER	WIDTH	DOT	PLY RATING	F / R	TYPE TL/TT	MAX LOAD	MAX PSI	PERMITTED RIM
F006	130/70ZR16	61	W	3.50	23.15	5.08	Y	R	F	TL	567	42	3.50~4.00
F006	110/70R17	54	V	3.00	23.07	4.33	Y	R	F	TL	467	42	3.00~3.50
F006	120/60ZR17	55	W	3.50	22.68	4.80	Y	R	F	TL	481	42	3.50~3.75
F006	120/70ZR17	58	W	3.50	23.62	4.80	Y	R	F	TL	520	42	3.50~3.75
F006	130/60ZR17	59	W	3.50	23.15	5.08	Y	R	F	TL	536	42	3.50~4.00
R006	140/60R17	63	V	3.75	23.62	5.47	Y	R	R	TL	600	42	3.75~4.50
R006	150/60R17	66	V	4.25	24.09	5.94	Y	R	R	TL	661	42	4.00~4.50
R006	160/60ZR17	69	W	4.50	24.57	6.34	Y	R	R	TL	716	42	4.25~5.00
R006	170/60ZR17	72	W	4.50	25.04	6.61	Y	R	R	TL	783	42	4.25~5.50
R006	180/55ZR17	73	W	5.50	24.80	7.01	Y	R	R	TL	805	42	5.50~6.00
R006	140/60R18	64	V	3.75	24.61	5.47	Y	R	R	TL	617	42	3.75~4.50
R006	150/60R18	67	V	4.25	25.08	5.94	Y	R	R	TL	677	42	4.00~4.50
R006	170/60R18	73	V	4.50	26.02	6.61	Y	R	R	TL	805	42	4.25~5.50

009 SERIES

RAVEN RADIAL

The 009 series, specifically developed to meet the demand for long life high performance radial tires, is highly recommended for long distance touring where tire wear is crucial. New construction provides superior riding comfort, while its new tread compound gives high grip on both dry and wet roads. Easy steering and superb cornering performance.

SR	TIRE SIZE	LOAD INDEX	SPEED SYMBOL	RECOM RIM	OVERALL DIAMETER	WIDTH	DOT	PLY RATING	F / R	TYPE TL/TT	MAX LOAD	MAX PSI	PERMITTED RIM
F009	120/60ZR17	55	W	3.50	22.68	4.80	Y	R	F	TL	481	42	3.50~3.75
F009	120/70ZR17	58	W	3.50	23.62	4.80	Y	R	F	TL	520	42	3.50~3.75
R009	160/60ZR17	69	W	4.50	24.57	6.34	Y	R	R	TL	716	42	4.25~5.00
R009	170/60ZR17	72	W	4.50	25.04	6.61	Y	R	R	TL	783	42	4.25~5.50
R009	180/55ZR17	73	W	5.50	24.80	7.01	Y	R	R	TL	805	42	5.50~6.00
R009	190/50ZR17	73	W	6.00	24.49	7.48	Y	R	R	TL	805	42	5.50~6.00
R009	200/50ZR17	75	W	6.25	24.88	7.87	Y	R	R	TL	853	42	6.00~6.50

011 SERIES

VERGE RADIAL

Our(Shinko) Tire brings you performance combined with extended tread life in the all- new 011 VERGE RADIAL, which is designed specifically for sport/touring riding.

The 011 Verge rear features Zero Degree JLSB (Joint-Less Steel Belted) state-of-the-art technology for added stability and strength, while the 011 front is Aramid belted for enhanced high-speed performance.

Both are DOT approved and feature a tread compound created to provide excellent grip with extended tread life.

The 011 also features a tread radius designed for enhanced high speed cornering.



[FRONT] [REAR]

• Features include

- Excellent grip with extended tread life
- Tread radius : enhanced high speed cornering
- W (168 mph)

SR	TIRE SIZE	LOAD INDEX	SPEED SYMBOL	RECOM RIM	OVERALL DIAMETER	WIDTH	DOT	PLY RATING	F / R	TYPE TL/TT	MAX LOAD	MAX PSI	PERMITTED RIM
F011	120/60ZR17	55	(W)	3.50	22.68	4.80	Y	R	F	TL	481	42	3.50~3.75
F011	120/70ZR17	58	(W)	3.50	23.62	4.80	Y	R	F	TL	520	42	3.50~3.75
F011	140/75VR17	67	(V)	3.50	25.28	5.47	Y	R	F	TL	667	42	3.50~4.25
F011	120/70ZR18	59	(W)	3.50	24.61	4.80	Y	R	F	TL	536	42	3.50~3.75
F011	130/60R23	65	V	3.50	29.13	5.08	Y	R	F	TL	639	42	3.50~4.00
R011	150/80ZR16 JLSB	71	(W)	3.50	25.43	5.90	Y	R	R	TL	761	42	3.50~4.25
R011	160/60ZR17 JLSB	69	(W)	4.50	24.57	6.34	Y	R	R	TL	716	42	4.25~5.00
R011	170/60ZR17 JLSB	72	(W)	4.50	25.04	6.61	Y	R	R	TL	783	42	4.25~5.50
R011	180/55ZR17 JLSB	73	(W)	5.50	24.80	7.01	Y	R	R	TL	805	42	5.50~6.00
R011	190/50ZR17 JLSB	73	(W)	6.00	24.49	7.48	Y	R	R	TL	805	42	5.50~6.00
R011	200/50ZR17 JLSB	75	(W)	6.25	24.88	7.87	Y	R	R	TL	853	42	6.00~6.50
R011	200/55VR17 JLSB	78	(V)	6.25	25.67	7.87	Y	R	R	TL	937	42	6.00~6.50
R011	200/50R18 JLSB	76	V	6.25	25.87	7.87	Y	R	R	TL	882	42	6.00~6.50
R011	300/35VR18 JLSB	87	(V)	10.50	26.26	11.77	Y	R	R	TL	1201	42	10.00~11.00



R003A SERIES

HOOK-UP & HOOK-UP PRO DRAG RADIAL (SPORT TIRE)

HOOK UP DRAG RADIAL rear tire features an all-new lightweight Aramid belted carcass with the softest compound available from Shinko. With a tread pattern and profile designed specifically for the demands of drag racing, the Shinko Drag Radial is the ultimate DOT drag tire. Combine the HOOK UP DRAG RADIAL with a Shinko 003 stealth front tire for a matching tread pattern. All of the great features of the original Hook-up, but lighter, faster, and now even better at the top-end of the track. The Hook-Up Pro's competition-developed design allows for more horsepower to be used throughout the run due to a larger contact patch at high speed. Enhanced carcass resists distortion, chunking, and the stresses of centrifugal force to maintain a more constant footprint.
 *Recommended for drag race use only



• Features include

- All-new lightweight Aramid belted carcass
- The softest compound
- 003 stealth front tire matching
- PRO : More lighter & More faster

SR	TIRE SIZE	LOAD INDEX	SPEED SYMBOL	RECOM RIM	OVERALL DIAMETER	WIDTH	DOT	PLY RATING	F / R	TYPE TL/TT	MAX LOAD	MAX PSI	PERMITTED RIM
R003A	180/55ZR17	73	W	5.50	24.80	7.01	Y	R	R	TL	805	42	5.50-6.00
R003A	190/50ZR17	73	W	6.00	24.49	7.48	Y	R	R	TL	805	42	5.50-6.00
R003A	200/50ZR17	75	W	6.25	24.88	7.87	Y	R	R	TL	853	42	6.00-6.50
R003A	190/50ZR17 PRO NEW	73	W	6.00	24.49	7.48	Y	R	R	TL	805	42	5.50-6.00
R003A	200/50ZR17 PRO NEW	75	W	6.25	24.88	7.87	Y	R	R	TL	853	42	6.00-6.50



REACTOR II Drag Slick BIAS

Wrinkle wall drag slick for track use only.



• Features include

- Tread compound designed for maximum traction
- 26" x 7" x 17" size fits most all sport bike rear wheels
- Recommended rim width 5 1/2" to 7 1/2"

SR	TIRE SIZE	LOAD INDEX	SPEED SYMBOL	RECOM RIM	OVERALL DIAMETER	WIDTH	DOT	PLY RATING	F / R	TYPE TL/TT	MAX LOAD	MAX PSI	PERMITTED RIM
Reactor II	26.0X7.0-17	-	-	6.50	26.44	7.80	N	4	R	TL	-	35	-

SR880[F] / SR881[R] SERIES

Designed for all weather, good traction, and tire life.



• Features include

- Designed for all weather, good traction, and tire life.
- All weather tread design, works well in wet and dry road conditions
- Intermediate compound offers good traction and tire life
- W speed rated (168 mph), Aramid belted, DOT approved

SR	TIRE SIZE	LOAD INDEX	SPEED SYMBOL	RECOM RIM	OVERALL DIAMETER	WIDTH	DOT	PLY RATING	F / R	TYPE TL/TT	MAX LOAD	MAX PSI	PERMITTED RIM
SR880	130/60ZR16	58	W	3.50	22.13	5.08	Y	4	F	TL	520	41	3.50-4.00
SR880	110/70R17	54	V	3.00	23.07	4.33	Y	4	F	TL	467	42	3.00-3.50
SR881	160/60ZR16	68	W	4.50	23.54	6.34	Y	4	R	TL	694	41	4.25-5.00
SR881	140/70R17	66	V	3.75	24.72	5.47	Y	4	R	TL	661	42	3.75-4.50

SR740 / SR741 SERIES

Specially designed tread efficiently disperses water in wet road conditions and is available in front (SR740) an rear (SR741) versions.



• Features include

- 4 ply rated
- Tubeless, DOT approved
- Speed Ratings: H (130mph) or V (149mph)

SR	TIRE SIZE	LOAD INDEX	SPEED SYMBOL	RECOM RIM	OVERALL DIAMETER	WIDTH	DOT	PLY RATING	F / R	TYPE TL/TT	MAX LOAD	MAX PSI	PERMITTED RIM
SR740	100/80-16	50	H	2.50	22.28	3.98	Y	4	F	TL	419	42	2.15-2.75
SR740	110/70-17	54	H	3.00	23.07	4.33	Y	4	F	TL	467	40	2.50-3.50
SR740	110/80-17	58	V	2.50	23.94	4.29	Y	4	F	TL	520	42	2.15-3.00
SR741	130/80-16	64	H	3.00	24.17	5.08	Y	4	R	TL	617	42	2.50-3.50
SR741	130/70-17	62	H	3.50	24.17	5.08	Y	4	R	TL	584	42	3.00-4.00
SR741	140/70-17	66	H	3.75	24.72	5.47	Y	4	R	TL	661	42	3.50-4.50
SR741	150/70-17	69	H	4.25	25.28	5.94	Y	4	R	TL	716	40	3.50-4.50
SR741	140/70-18	63	V	3.75	25.71	5.47	Y	4	R	TL	600	42	3.50-4.50

SR780 / SR781 SERIES



• Features include

- On road bias
- Safety and comfort driving

SR	TIRE SIZE	LOAD INDEX	SPEED SYMBOL	RECOM RIM	OVERALL DIAMETER	WIDTH	DOT	PLY RATING	F / R	TYPE TL/TT	MAX LOAD	MAX PSI	PERMITTED RIM
SR780	80/90-17	44	P	1.85	22.68	3.15	Y	4	F	TL	353	33	1.60-2.15
SR780	90/80-17	46	P	2.15	22.68	3.54	Y	4	F	TL	375	33	1.85-2.50
SR780	100/80-17	52	H	2.50	23.31	3.98	Y	4	F	TL	441	42	2.15-2.75
SR780	110/70-17	58	H	3.00	22.95	4.17	Y	4	F	TL	520	42	2.50-3.50
SR780	90/90-21	54	H	2.15	27.36	3.54	Y	4	F	TL	467	42	1.85-2.50
SR781	130/70-17	62	H	3.50	24.44	5.07	Y	4	R	TL	584	42	3.00-4.00
SR781	140/70-17	66	H	3.75	24.72	5.47	Y	4	R	TL	661	42	3.50-4.50
SR781	150/70-17	69	H	4.25	25.28	5.94	Y	4	R	TL	716	42	3.50-4.50

E804 / E805 SERIES

ADVENTURE TRAIL

Utilizing the latest in dual sport tire technology these adventure tires are ideal for situations where a rider spends 40% on-road and 60% off-road. The 804/805 bias front/rear combo is currently available in a 110/80-19 front and 150/70-17 rear combo.



805 ADVENTURE TRAIL

EMBRACE THE UNEXPECTED

With the latest in dual sport tire technology these tires will take anything the adventure can throw at them and then ask for more.

40% ON-ROAD and 60% OFF-ROAD



[FRONT]

[REAR]

• Features include

- 40% on-road and 60% off-road
- E-804 : Front
- E-805 : Rear

SR	TIRE SIZE	LOAD INDEX	SPEED SYMBOL	RECOM RIM	OVERALL DIAMETER	WIDTH	DOT	PLY RATING	F / R	TYPE TL/TT	MAX LOAD	MAX PSI	PERMITTED RIM
E804	100/90-19	57	S	2.50	26.10	3.98	Y	4	F	TT	507	41	2.15-2.75
E804	110/80B19	59	Q	2.50	25.95	4.29	Y	4	F	TL	536	33	2.15-3.00
E804	90/90-21	54	S	2.15	27.36	3.54	Y	4	F	TT	441	40	1.85-2.50
E804	90/90-21	54	T	2.15	27.36	3.54	Y	4	F	TL	441	40	1.85-2.50
E805	130/80-17	65	S	3.00	25.20	5.08	Y	4	R	TT	639	41	2.50-3.50
E805	130/80-17	65	T	3.00	25.20	5.08	Y	4	R	TL	639	41	2.50-3.50
E805	140/80-17	69	Q	3.50	25.83	5.59	Y	4	R	TT	716	41	2.75-3.75
E805	150/70B17	69	Q	4.25	25.28	5.94	Y	4	R	TL	716	33	3.50-4.50
E805	120/90-18	65	R	2.75	26.50	4.69	Y	4	R	TT	639	41	2.50-3.00
E805	150/70B18	70	Q	4.25	26.26	5.94	Y	4	R	TT	716	33	3.50-4.50
E805	150/70B18	70	Q	4.25	26.26	5.94	Y	4	R	TL	716	33	3.50-4.50

SR244 SERIES

DUAL SPORT 244 SERIES - 4PR, 6PR

The 244 Series dual purpose street and trail tire is designed to be equally at home on dirt or pavement.



• Features include

- Adventure Trail
- Dual purpose & trail design
- 4 ply or 6 ply rating
- All sizes designed for front or rear fitment

SR	TIRE SIZE	LOAD INDEX	SPEED SYMBOL	RECOM RIM	OVERALL DIAMETER	WIDTH	DOT	PLY RATING	F / R	TYPE TL/TT	MAX LOAD	MAX PSI	PERMITTED RIM
SR244	2.75-14	35	P	1.85	20.16	2.95	Y	4	B	TT	267	33	1.40-1.85
SR244	3.00-16	45	P	1.85	22.68	3.15	Y	4	B	TT	364	32	1.60-2.15
SR244	2.50-17	38	L	1.50	22.36	2.52	Y	4	B	TT	291	33	1.40-1.60
SR244	3.00-17	45	P	1.85	23.70	3.15	Y	4	B	TT	364	33	1.60-2.15
SR244	3.00-17	50	P	1.85	23.70	3.15	Y	6	B	TT	364	33	1.60-2.15
SR244	3.25-17	50	P	2.15	24.17	3.50	Y	4	B	TT	419	33	1.85-2.15
SR244	4.60-17	62	P	2.15	24.76	4.37	Y	4	B	TT	584	33	2.15-2.75
SR244	4.60-17	68	S	2.15	24.76	4.37	Y	6	B	TT	694	40	2.15-2.75
SR244	5.10-17	67	P	3.00	25.63	5.08	Y	4	B	TT	677	33	2.50-3.00
SR244	3.00-18	47	L	1.85	24.69	3.15	Y	4	B	TT	386	32	1.60-2.15
SR244	3.00-18	52	L	1.85	24.69	3.15	Y	6	B	TT	441	40	1.60-2.15
SR244	3.25-18	52	P	2.15	25.16	3.50	Y	4	B	TT	441	32	1.85-2.50
SR244	3.50-18	56	P	2.15	25.55	3.66	Y	4	B	TT	494	32	1.85-2.50
SR244	3.50-18	62	P	2.15	25.55	3.66	Y	6	B	TT	584	40	1.85-2.50
SR244	4.10-18	60	S	2.15	25.16	4.09	Y	4	B	TT	551	32	1.85-2.50
SR244	4.10-18	65	S	2.15	25.16	4.09	Y	6	B	TT	551	32	1.85-2.50
SR244	4.60-18	63	P	2.15	25.75	4.37	Y	4	B	TT	600	32	2.15-2.75
SR244	4.60-18	69	S	2.15	25.75	4.37	Y	6	B	TT	600	32	2.15-2.75
SR244	5.10-18	69	P	3.00	26.61	5.08	Y	4	B	TT	520	32	2.50-3.00
SR244	2.50-19	41	L	1.50	24.37	2.52	Y	4	B	TT	320	33	1.40-1.60
SR244	2.75-19	43	P	1.85	25.16	2.92	Y	4	B	TT	342	32	1.40-1.85
SR244	2.50-21	43	P	1.50	26.34	2.52	Y	4	B	TT	342	32	1.40-1.60
SR244	2.75-21	45	P	1.85	27.13	2.95	Y	4	B	TT	364	32	1.40-1.85
SR244	2.75-21	45	P	1.85	27.13	2.95	Y	6	B	TT	364	40	1.40-1.85
SR244	3.00-21	51	L	1.85	27.68	3.15	Y	4	B	TT	430	33	1.60-2.15
SR244	3.00-21	57	L	1.85	27.68	3.15	Y	6	B	TT	467	40	1.60-2.15

E700 SERIES

DUAL SPORT TRAIL MASTER

DOT approved. Aggressive tread for off road performance, round profile for smooth cornering on the street. 4 ply rating construction - some sizes available tubeless.



• Features include

- Aggressive tread pattern with deep lug construction
- Cornering stability side knobs
- 4 ply carcass for durability

SR	TIRE SIZE	LOAD INDEX	SPEED SYMBOL	RECOM RIM	OVERALL DIAMETER	WIDTH	DOT	PLY RATING	F / R	TYPE TL/TT	MAX LOAD	MAX PSI	PERMITTED RIM
E700	4.60-17	62	P	2.15	24.76	4.37	Y	4	B	TT	584	33	2.15-2.75
E700	5.10-17	67	S	3.00	25.63	5.08	Y	4	B	TL	677	33	2.50-3.00
E700	4.60-18	63	S	2.15	25.75	4.37	Y	4	B	TT	600	36	2.15-2.75
E700	130/80-18	66	S	3.00	26.18	5.08	Y	4	B	TL	661	33	2.50-3.50
E700	3.00-21	51	S	1.85	27.68	3.15	Y	4	B	TL	430	36	1.60-2.15

E705 SERIES

TRAIL MASTER RADIAL - BIAS

The Shinko 705 has a versatile tread pattern that provides excellent wet and dry weather adhesion and smooth running on the highway



E705 SERIES
DUAL SPORT

The 705's rubber compound resists tearing during off road use, and a versatile tread pattern provides excellent wet and dry weather adhesion and smooth running on the highway

705 Adventure Touring

EMBRACE THE UNEXPECTED

Shinko's 705's tough rubber compound resists tearing during off road use while parking, a versatile tread pattern provides excellent wet and dry weather adhesion and smooth running on the highway. Designed in a multitude of sizes, the 705 fits most bikes while providing the miles per dollar you crave.

• Features include

- A special tire for riders who are equally at home on tarmac and off-road.
- An aggressive tread pattern provides excellent wet and dry weather adhesion.
- All-round compound for a wide spectrum of weather and street conditions.
- Rubber compound resists tearing during off road use
- Good traction, even off road, thanks to the dirt-oriented tread pattern.
- DOT approved, 4 ply rated
- All sizes designed for front or rear fitment unless noted
- RADIAL TIRE SIZE : 120/70R17, 110/80R19, 120/70R19, 150/70R17, 170/60R17, 150/70R18
- Specially TIRE SIZE 150/70R18 - JLSB RADIAL



SR	TIRE SIZE	LOAD INDEX	SPEED SYMBOL	RECOM RIM	OVERALL DIAMETER	WIDTH	DOT	PLY RATING	F / R	TYPE TL/TT	MAX LOAD	MAX PSI	PERMITTED RIM
E705	120/70R17	58	H	3.50	23.62	4.80	Y	R	F	TL	520	42	3.50-3.75
E705	110/80-19	59	Q	2.50	25.94	4.29	Y	4	F	TL	536	33	2.15-3.00
E705	110/80R19	59	H	2.50	25.94	4.29	Y	R	F	TL	536	42	2.50-3.00
E705	120/70R19	60	H	3.50	25.63	4.80	Y	R	F	TL	551	42	3.50-3.75
E705	120/90-17	64	H	2.75	25.51	4.69	Y	4	B	TT	617	41	2.50-3.00
E705	130/80-17	65	H	3.00	25.20	5.08	Y	4	B	TL	639	41	2.50-3.50
E705	130/90-17	68	H	3.00	26.22	5.08	Y	4	B	TT	694	41	2.50-3.50
E705	140/80-17	69	H	3.50	25.83	5.59	Y	4	B	TT	716	41	2.75-3.75
E705	4.10-18	59	P	2.50	25.16	4.09	Y	4	B	TT	536	33	1.85-2.50
E705	120/80-18	62	H	2.75	25.55	4.69	Y	4	B	TT	584	41	2.50-3.00
E705	2.75-21	45	P	1.85	27.13	2.95	Y	4	B	TT	364	33	1.40-1.85
E705	90/90-21	54	H	2.15	27.36	3.54	Y	4	B	TL	465	41	1.85-2.50
E705	150/70-17	69	Q	4.25	25.28	5.94	Y	4	R	TL	716	36	3.50-4.50
E705	150/70R17	69	H	4.25	25.28	5.94	Y	R	R	TL	716	42	4.00-4.50
E705	170/60R17	72	H	4.50	25.04	6.61	Y	R	R	TL	783	42	4.25-5.50
E705	150/70R18 JLSB	70	V	4.25	26.26	5.94	Y	R	R	TL	739	42	4.00-4.50

OFF ROAD



216 SERIES

SR216 REAR is the tire of choice for extreme enduro riders, its pretty much an essential part of being competitive in the sport. SR216 FRONT with rolling diameter and larger section width made to handle all kinds of uneven and difficult terrain with exceptional results.

NEW!



• Features include

- FIM approved enduro
- REAR tires are two versions for different terrain and conditions. MX version is the all round enduro compound SX version is the ultra-soft tire for extreme grip on the toughest terrain.

SR	TIRE SIZE	LOAD INDEX	SPEED SYMBOL	RECOM RIM	OVERALL DIAMETER	WIDTH	DOT	PLY RATING	F / R	TYPE TL/TT	MAX LOAD	MAX PSI	PERMITTED RIM
216MX	90/90-21 All Around	54	R	2.15	27.36	3.54	Y	4	F	TT	467	33	1.85-2.50
216MX	90/100-21 Fat Tyre	57	R	2.15	28.07	3.54	Y	4	F	TT	507	33	1.85-2.50
216MX	80/100-21 All Around	51	R	1.85	27.28	3.15	Y	4	F	TT	430	36	1.60-2.15
216MX	140/80-18	70	R	3.50	26.81	5.59	Y	4	R	TL	739	33	2.75-3.75
216SX	140/80-18	70	R	3.50	26.81	5.59	Y	4	R	TL	739	33	2.75-3.75

SR267 / SR268 SERIES

FLAT TRACK

Our(Shinko) flat Track tires are designed and tested to perform at the highest level of the sport. The SR267/268 is available in three different compounds to give you the best tire for any track.

NEW!



• Features include

- Available in Soft-Medium-Hard compounds
- Proven performance
- DOT approved

SR	TIRE SIZE	LOAD INDEX	SPEED SYMBOL	RECOM RIM	OVERALL DIAMETER	WIDTH	DOT	PLY RATING	F / R	TYPE TL/TT	MAX LOAD	MAX PSI	PERMITTED RIM
SR267	120/70-17 SOFT	58	M	3.50	23.62	4.80	Y	4	F	T/T	520	33	2.75-3.75
SR267	130/80-19 SOFT	67	H	3.00	27.20	5.08	Y	4	F	T/T	677	42	2.50-3.50
SR267	130/80-19 MED	67	H	3.00	27.20	5.08	Y	4	F	T/T	677	42	2.50-3.50
SR267	130/80-19 HARD	67	H	3.00	27.20	5.08	Y	4	F	T/T	677	42	2.50-3.50
SR268	140/80-19 SOFT	71	H	3.50	27.83	5.59	Y	4	R	T/T	761	42	2.75-3.75
SR268	140/80-19 MED	71	H	3.50	27.83	5.59	Y	4	R	T/T	761	42	2.75-3.75
SR268	140/80-19 HARD	71	H	3.50	27.83	5.59	Y	4	R	T/T	761	42	2.75-3.75



R505 SERIES

HYBRID CHEATER

NEW!

Hard Enduro/Extreme Single Track (Trials/Trail)



• Features include

- New Hybrid Hard Enduro / Extreme single track trail tire finds traction in the most extreme conditions—it's almost like cheating!
- Best of both worlds, soft sticky rubber compound like the Trail Pro trials tire in a knobby tread pattern to work in a wider variety of soil conditions
- Where a Trials tire falls short in braking and lose soil conditions, the 505 "Cheater" bridges that gap to make it the Ultimate Hybrid off-road tire
- Adds confidence even in the most demanding terrain
- Available in popular 18" and 19" sizes

SR	TIRE SIZE	LOAD INDEX	SPEED SYMBOL	RECOM RIM	OVERALL DIAMETER	WIDTH	DOT	PLY RATING	F / R	TYPE TL/TT	MAX LOAD	MAX PSI	PERMITTED RIM
R505	110/100-18 CHEATER	64	M	2.50	26.65	4.29	Y	4	R	TT	617	33	2.15~3.00
R505	120/100-18 CHEATER	68	M	2.75	27.44	4.69	Y	4	R	TT	694	33	2.50~3.00
R505	110/90-19 CHEATER	62	M	2.50	26.81	4.29	Y	4	R	TT	584	33	2.15~3.00
R505	120/90-19 CHEATER	66	M	2.75	27.48	4.69	Y	4	R	TT	661	33	2.50~3.00

F255 SERIES

TRAIL PRO RADIAL

NEW!

TRAIL / With its super soft compound, with a highly flexible radial carcass, the 255 Trail Pro provides excellent grip on rocks and other slick terrain. Ideal for technical singletrack terrain. (Trials/Trail)



• Features include

- Super soft compound with a highly flexible radial
- Excellent grip on rocks and other slick terrain
- Lightweight for improved performance & maneuverability

SR	TIRE SIZE	LOAD INDEX	SPEED SYMBOL	RECOM RIM	OVERALL DIAMETER	WIDTH	DOT	PLY RATING	F / R	TYPE TL/TT	MAX LOAD	MAX PSI	PERMITTED RIM
F255	110/90R18	61	L	2.50	25.79	4.29	Y	R	F	TL	567	33	2.50~3.00
F255	120/90R18 NEW	65	M	2.75	26.50	4.68	Y	R	F	TL	639	33	2.75~3.00
F255	110/80R19	59	L	2.50	25.94	4.29	Y	R	F	TL	536	33	2.50~3.00
F255	120/80R19 NEW	63	M	2.75	26.57	4.68	Y	R	F	TL	595	33	2.75~3.00

546 SERIES

NEW!

Soft-Intermediate / Excellent choice for Off-Road applications.



[FRONT] [REAR]

• Features include

- Rear Tire features :
- Work very well in a wide range of soil conditions from mud, sand to intermediate loam
 - Rubber compound offers excellent durability for long knob life
- Front Tire features :
- Front knobs use a 45° knob pattern for a better biting edge when cornering and better braking stability
 - Tall knobs offer excellent traction in soft to intermediate loam conditions

SR	TIRE SIZE	LOAD INDEX	SPEED SYMBOL	RECOM RIM	OVERALL DIAMETER	WIDTH	DOT	PLY RATING	F / R	TYPE TL/TT	MAX LOAD	MAX PSI	PERMITTED RIM
F546	70/100-17	40	M	1.60	22.52	2.72	Y	4	F	TT	309	33	1.40~1.85
F546	70/100-19	42	M	1.60	24.53	2.72	Y	4	F	TT	150	33	1.40~1.85
F546	80/100-21	51	M	1.85	27.28	3.15	Y	4	F	TT	430	33	1.60~2.15
F546	90/100-21	57	M	2.15	28.07	3.54	Y	4	F	TT	507	33	1.85~2.50
R546	90/100-14	49	M	2.15	21.10	3.54	Y	4	R	TT	408	33	1.85~2.50
R546	90/100-16	51	M	2.15	23.07	3.54	Y	4	R	TT	430	33	1.85~2.50
R546	100/100-18	59	M	2.50	25.87	3.98	Y	4	R	TT	536	33	2.15~2.75
R546	110/100-18	64	M	2.50	26.65	4.29	Y	4	R	TT	617	33	2.15~3.00
R546	100/90-19	57	M	2.50	26.10	3.98	Y	4	R	TT	507	33	2.15~2.75
R546	110/90-19	62	M	2.50	26.81	4.29	Y	4	R	TT	534	33	2.15~3.00
R546	120/80-19	63	M	2.75	26.57	4.69	Y	4	R	TT	595	33	2.50~3.00

F524 / R525 SERIES

Soft-Intermediate / With its wide, self-cleaning tread pattern, the F524/R525 front and rear combo is ideal for soft to intermediate terrain.



[F524] [R525]

• Features include

- For extremely soft terrain (mud/sand)
- Wide spaced knobs shed mud quickly
- Tall aggressive tread pattern

SR	TIRE SIZE	LOAD INDEX	SPEED SYMBOL	RECOM RIM	OVERALL DIAMETER	WIDTH	DOT	PLY RATING	F / R	TYPE TL/TT	MAX LOAD	MAX PSI	PERMITTED RIM
F524	70/100-17	40	M	1.60	22.52	2.72	Y	4	F	TT	309	33	1.40~1.85
F524	70/100-19	42	M	1.60	24.53	2.72	Y	4	F	TT	331	33	1.40~1.85
F524	80/100-21	51	M	1.85	27.28	3.15	Y	4	F	TT	430	33	1.60~2.15
F525	60/100-14	29	M	1.40	18.74	2.36	Y	4	F	TT	227	33	1.20~1.60
R525	80/100-14	49	M	1.85	20.31	3.15	Y	6	R	TT	408	41	1.60~2.15
R525	90/100-14	49	M	2.15	21.10	3.54	Y	4	R	TT	408	33	1.85~2.50
R525	90/100-16	51	M	2.15	23.07	3.54	Y	4	R	TT	430	33	1.85~2.50
R525	100/100-18	59	M	2.50	25.84	3.98	Y	4	R	TT	536	33	2.15~2.75
R525	110/100-18	64	M	2.50	26.65	4.29	Y	4	R	TT	617	33	2.15~3.00
R525	120/100-18	68	M	2.75	27.44	4.69	Y	4	R	TT	694	33	2.50~3.00
R525	100/90-19	57	M	2.50	26.10	3.98	Y	4	R	TT	507	33	2.15~2.75
R525	110/90-19	62	M	2.50	26.81	4.29	Y	4	R	TT	584	33	2.15~3.00
R525	120/90-19	66	M	2.75	27.48	4.69	Y	4	R	TT	661	33	2.50~3.00

F544 / R545 SERIES

NEW!

TRIALS / We(Shinko) focus on the whole package: safety, durability and the thrill of riding



[FRONT] [REAR]

• Features include

- Features a carcass that is suitable for the trial track
- Specifically developed for Trial Competition use
- Incredible gripping power proven in trial competition
- Tread blocks create a natural wide, flat footprint.
- FRONT : Bias & REAR : Radial construction

SR	TIRE SIZE	LOAD INDEX	SPEED SYMBOL	RECOM RIM	OVERALL DIAMETER	WIDTH	DOT	PLY RATING	F / R	TYPE TL/TT	MAX LOAD	MAX PSI	PERMITTED RIM
F544	2.75-21	45	L	1.85	27.13	2.95	Y	4	F	TT	364	33	1.60~1.85
R545	4.00R18	64	L	2.15	26.42	4.09	Y	4	R	TL	617	33	2.15~3.00

SR 428 SERIES

With its versatile tread pattern, the 428 makes an ideal OEM replacement, with a 14 inch rear and 18 inch front specifically for the Yamaha TW200.



[FRONT] [REAR]

• Features include

- 4 ply rated nylon carcass
- Sizes to fit the Yamaha TW200

SR	TIRE SIZE	LOAD INDEX	SPEED SYMBOL	RECOM RIM	OVERALL DIAMETER	WIDTH	DOT	PLY RATING	F / R	TYPE TL/TT	MAX LOAD	MAX PSI	PERMITTED RIM
SR428	90/90-18	51	P	2.15	24.37	3.54	Y	4	F	TL	430	33	1.85~2.50
SR428	130/80-18	66	P	3.00	26.18	5.08	Y	4	F	TT	661	33	2.50~3.50
SR428	180/80-14	78	P	4.50	25.35	7.20	Y	4	R	TT	937	33	4.00~5.00



SR 241 SERIES

TRIALS / A versatile performer with a tough nylon carcass and high dimpled knobs that work well in a variety of terrain. A narrow knobby configuration means less of an environmental foot print while on the trail.



• Features include

- Tough nylon carcass
- High dimpled knobs
- For a variety of terrain

SR	TIRE SIZE	LOAD INDEX	SPEED SYMBOL	RECOM RIM	OVERALL DIAMETER	WIDTH	DOT	PLY RATING	F / R	TYPE TL/TT	MAX LOAD	MAX PSI	PERMITTED RIM
SR241	3.00-12	47	J	2.10	18.27	3.31	Y	4	B	TT	386	36	1.85~2.50
SR241	2.75-14	35	P	1.85	20.16	2.95	Y	4	B	TT	267	33	1.40~1.85
SR241	2.50-15	34	L	1.50	20.35	2.52	Y	4	B	TT	260	33	1.40~1.60
SR241	3.00-16	43	P	1.85	22.68	3.15	Y	4	B	TT	342	32	1.60~2.15
SR241	2.50-17	38	L	1.50	22.36	2.52	Y	4	B	TT	291	33	1.40~1.60
SR241	23/4-17(2.75-17)	47	J	1.85	22.99	2.95	Y	4	B	TT	386	41	1.50~1.85
SR241	3.00-17	45	P	1.85	23.70	3.15	Y	4	B	TT	364	33	1.60~2.15
SR241	2.50-18	40	L	1.50	23.35	2.52	Y	4	B	TT	309	32	1.40~1.60
SR241	2.75-18	42	P	1.85	24.13	2.92	Y	4	B	TT	331	33	1.40~1.85
SR241	3.00-18	47	P	1.85	24.69	3.15	Y	4	B	TT	386	32	1.60~2.15
SR241	3.50-18	56	P	2.15	25.55	3.66	Y	4	B	TT	494	32	1.85~2.15
SR241	4.00-18	64	P	2.50	26.42	4.25	Y	4	B	TT	617	33	2.15~2.75
SR241	2.50-19	41	L	1.50	24.37	2.52	Y	4	B	TT	320	32	1.40~1.60
SR241	2.75-19	43	P	1.85	25.16	2.95	Y	4	B	TT	342	33	1.40~1.85
SR241	3.50-19	57	P	2.15	26.57	3.66	Y	4	B	TT	507	33	1.85~2.15
SR241	2.50-21	43	P	1.50	26.34	2.52	Y	4	B	TT	342	32	1.40~1.60
SR241	2.75-21	45	P	1.85	27.13	2.95	Y	4	B	TT	364	33	1.40~1.85
SR241	3.00-21	51	P	1.85	27.68	3.15	Y	4	B	TT	430	33	1.60~2.15



[SR246] [F540] [R540]

• Features include

- Open tread pattern cleans out well in mud / sand conditions
- Tube type, 4ply rating

SR 246 SERIES

TRIALS

SR	TIRE SIZE	LOAD INDEX	SPEED SYMBOL	RECOM RIM	OVERALL DIAMETER	WIDTH	DOT	PLY RATING	F / R	TYPE TL/TT	MAX LOAD	MAX PSI	PERMITTED RIM
SR246	3.50-18	56	P	2.15	25.55	3.15	Y	4	B	TT	494	32	1.85~2.50
SR246	3.00-19	49	P	1.85	25.71	3.15	Y	4	F	TT	408	32	1.60~2.15

540 SERIES

The 540 is designed for extremely soft terrain, such as mud and sand. Wide spaced knobs shed mud quickly and its tall aggressive tread pattern offers increased traction in the nastiest of conditions.

SR	TIRE SIZE	LOAD INDEX	SPEED SYMBOL	RECOM RIM	OVERALL DIAMETER	WIDTH	DOT	PLY RATING	F / R	TYPE TL/TT	MAX LOAD	MAX PSI	PERMITTED RIM
F540	70/100-17	40	M	1.60	22.52	2.72	Y	4	F	TT	309	33	1.40~1.85
F540	70/100-19	42	M	1.60	24.53	2.72	Y	4	F	TT	331	33	1.40~1.85
F540	80/100-21	51	M	1.85	27.28	3.15	Y	4	F	TT	430	33	1.60~2.15
R540	90/100-14	49	M	2.15	21.10	3.54	Y	4	R	TT	408	33	1.85~2.50
R540	90/100-16	51	M	2.15	23.07	3.54	Y	4	R	TT	430	33	1.85~2.50
R540	100/100-18	59	M	2.50	25.87	3.98	Y	4	R	TT	536	33	2.15~2.75
R540	110/100-18	64	M	2.50	26.65	4.29	Y	4	R	TT	617	33	2.15~3.00
R540	120/100-18	68	M	2.75	27.44	4.69	Y	4	R	TT	694	33	2.50~3.00
R540	100/90-19	57	M	2.50	26.10	3.98	Y	4	R	TT	507	33	2.15~2.75
R540	110/90-19	62	M	2.50	26.81	4.29	Y	4	R	TT	584	33	2.15~3.00
R540	120/90-19	66	M	2.75	27.48	4.69	Y	4	R	TT	661	33	2.50~3.00

SR 421 SERIES

Mini Bike Trail



• Features include

- 4 ply rated nylon carcass
- DOT approved

SR	TIRE SIZE	LOAD INDEX	SPEED SYMBOL	RECOM RIM	OVERALL DIAMETER	WIDTH	DOT	PLY RATING	F / R	TYPE TL/TT	MAX LOAD	MAX PSI	PERMITTED RIM
SR421	3.50-8	46	J	2.50	15.20	3.62	Y	4	B	TT	375	36	2.15~2.50
SR421	4.00-8	55	J	2.50	16.34	4.13	Y	4	B	TT	481	36	2.50~3.00
SR421	3.00-10	42	J	2.15	16.26	3.31	Y	4	B	TT	331	36	1.85~2.50
SR421	3.50-10	51	J	2.50	17.20	3.62	Y	4	B	TT	430	36	2.15~2.50

F502 / R500A SERIES

HARD / The F502 & R500A combo is designed to work in intermediate to hard terrain conditions.



[F502] [R500A]

• Features include

- Directional tread pattern
- Economically priced
- High carbon compound
- Offers good traction, braking and stability for greater control

SR	TIRE SIZE	LOAD INDEX	SPEED SYMBOL	RECOM RIM	OVERALL DIAMETER	WIDTH	DOT	PLY RATING	F / R	TYPE TL/TT	MAX LOAD	MAX PSI	PERMITTED RIM
F502	70/100-17	40	M	1.60	22.52	2.72	Y	4	F	TT	309	33	1.40~1.85
R500A	120/100-18	68	M	2.75	27.44	4.69	Y	4	R	TT	694	33	2.50~3.00

520A SERIES

Intermediate-Hard / The directional pattern of the 520 tire works well in intermediate to hard terrain.



• Features include

- Reinforced knobs resist tearing and chunking
- Directional tread pattern
- High carbon compound

SR	TIRE SIZE	LOAD INDEX	SPEED SYMBOL	RECOM RIM	OVERALL DIAMETER	WIDTH	DOT	PLY RATING	F / R	TYPE TL/TT	MAX LOAD	MAX PSI	PERMITTED RIM
SR520	2.50-10	33	J	1.50	15.31	2.56	Y	4	F	TT	254	36	1.50~1.60
SR520	2.75-10	38	J	1.85	15.71	2.83	Y	4	R	TT	291	36	1.50~1.85
SR520	2.50-12	33	J	1.50	17.32	2.56	Y	4	B	TT	254	36	1.50~1.60
F520A	70/100-17	40	M	1.60	22.52	2.72	Y	4	F	TT	309	33	1.40~1.85
F520A	70/100-19	42	M	1.60	24.53	2.72	Y	4	F	TT	331	33	1.40~1.85
F520A	80/100-21	51	M	1.85	27.28	3.15	Y	4	F	TT	430	33	1.60~2.15
R520A	90/100-14	49	M	2.15	21.10	3.54	Y	4	R	TT	408	33	1.85~2.50
R520A	110/100-18	64	M	2.50	26.65	4.29	Y	4	R	TT	617	33	2.15~3.00
R520A	120/100-18	68	M	2.75	27.44	4.69	Y	4	R	TT	694	33	2.50~3.00
R520A	100/90-19	57	M	2.50	26.10	3.98	Y	4	R	TT	507	33	2.15~2.75
R520A	110/90-19	62	M	2.50	26.81	4.29	Y	4	R	TT	584	33	2.15~3.00



R523 SERIES

HARD / The 523 works well in intermediate terrain soil conditions. Its reinforced knobs resist tearing and chunking while providing consistent grip.



- Features include
 - Economically priced
 - High carbon compound
 - Offers good traction, braking and stability for greater control

SR	TIRE SIZE	LOAD INDEX	SPEED SYMBOL	RECOM RIM	OVERALL DIAMETER	WIDTH	DOT	PLY RATING	F / R	TYPE TL/TT	MAX LOAD	MAX PSI	PERMITTED RIM
R523	100/100-18	59	M	2.50	25.87	3.98	Y	4	R	TT	536	33	2.15~2.75
R523	110/100-18	64	M	2.50	26.65	4.29	Y	4	R	TT	617	33	2.15~3.00
R523	100/90-19	57	M	2.50	26.10	3.98	Y	4	R	TT	507	33	2.15~2.75
R523	110/90-19	62	M	2.50	26.81	4.29	Y	4	R	TT	584	33	2.15~3.00
R523	120/90-19	66	M	2.75	27.48	4.69	Y	4	R	TT	661	33	2.50~3.00

F504 / R505 SERIES

HARD / Designed to work in varying conditions (from soft to intermediate to hard terrain). The F504 & R505 combo offers exceptional traction, braking, stability, and control.



[F504]

[R505]

- Features include
 - Economically priced
 - High carbon compound
 - Offers good traction, braking and stability for greater control

SR	TIRE SIZE	LOAD INDEX	SPEED SYMBOL	RECOM RIM	OVERALL DIAMETER	WIDTH	DOT	PLY RATING	F / R	TYPE TL/TT	MAX LOAD	MAX PSI	PERMITTED RIM
F504	80/100-21	51	M	1.85	27.28	3.15	Y	4	F	TT	430	33	1.60~2.15
R505	90/100-14	49	M	2.15	21.10	3.50	Y	4	R	TT	408	33	1.85~2.50
R505	100/100-18	59	M	2.50	25.84	3.98	Y	4	R	TT	536	33	2.15~2.75
R505	110/100-18	64	M	2.50	26.65	4.29	Y	4	R	TT	617	33	2.15~3.00
R505	100/90-19	57	M	2.50	26.10	3.98	Y	4	R	TT	507	33	2.15~2.75
R505	110/90-19	62	M	2.50	26.81	4.29	Y	4	R	TT	584	33	2.15~3.00
R505	120/90-19	66	M	2.75	27.48	4.69	Y	4	R	TT	661	33	2.50~3.00

SR 248 SERIES



- Features include
 - Perfect all-round farm / trail tire
 - Hard terrain tire

SR	TIRE SIZE	LOAD INDEX	SPEED SYMBOL	RECOM RIM	OVERALL DIAMETER	WIDTH	DOT	PLY RATING	F / R	TYPE TL/TT	MAX LOAD	MAX PSI	PERMITTED RIM
SR248	4.60-17	62	P	2.15	24.76	4.37	Y	4	B	TT	584	33	2.15~2.75
SR248	4.10-18	59	P	2.15	25.16	4.09	Y	4	F	TT	536	32	1.85~2.50
SR248	3.00-21	51	P	1.85	27.38	3.15	Y	4	F	TT	430	32	1.60~2.15
SR248	3.50-18	56	P	2.15	25.55	3.66	Y	4	R	TT	494	32	1.85~2.50
SR248	4.60-18	63	P	2.15	25.75	4.37	Y	4	R	TT	600	32	2.15~2.75
SR248	5.10-18	69	P	3.00	26.61	5.08	Y	4	R	TT	520	32	2.50~3.00

STREET TIRES

SR200



SR	TIRE SIZE	L.I.	S.S.	PR.	FR.	TL/TT
SR200	2.75-18	42	P	4	F	TT

SR201



SR	TIRE SIZE	L.I.	S.S.	PR.	FR.	TL/TT
SR201	3.25-19	54	S	4	F	TT

SR206



SR	TIRE SIZE	L.I.	S.S.	PR.	FR.	TL/TT
SR206	2.50-16	36	L	4	R	TT

SR208



SR	TIRE SIZE	L.I.	S.S.	PR.	FR.	TL/TT
SR208A	2.75-17	41	P	4	R	TT

SR210



SR	TIRE SIZE	L.I.	S.S.	PR.	FR.	TL/TT
SR210	3.00-16	43	P	4	R	TT
SR210	3.00-17	45	P	4	R	TT
SR210	2.75-18	42	P	4	R	TT
SR210	3.00-18	47	P	4	R	TT
SR210	3.50-18	56	P	4	R	TT
SR210	3.00-19	49	P	4	R	TT
SR210	3.50-19	57	P	4	R	TT

SR242



SR	TIRE SIZE	L.I.	S.S.	PR.	FR.	TL/TT
SR242	4.00-18	64	P	4	R	TL

SR303



SR	TIRE SIZE	L.I.	S.S.	PR.	FR.	TL/TT
SR303	23/4-17 (2.75-17)	47	J	4	B	TT

SR563



SR	TIRE SIZE	L.I.	S.S.	PR.	FR.	TL/TT
SR563	90/90-14	46	P	4	F	TL
SR563	100/90-14	51	P	4	R	TL

SR564



SR	TIRE SIZE	L.I.	S.S.	PR.	FR.	TL/TT
SR564	110/90-16	59	P	4	R	TL

SR566



SR	TIRE SIZE	L.I.	S.S.	PR.	FR.	TL/TT
SR566	110/90-16	59	P	4	R	TL

SR567



SR567 & SR568
Some Sizes Possible
for Big Scooter

SR	TIRE SIZE	L.I.	S.S.	PR.	FR.	TL/TT
SR567	80/90-14	43	P	4	F	TL
SR567	120/70-14	55	S	4	F	TL
SR567	120/80-14	58	S	4	F	TL
SR567	120/70-15	56	S	4	F	TL
SR567	90/80-16	51	S	6	F	TL
SR567	100/80-16	50	P	4	F	TL
SR567	110/70-16	52	S	4	F	TL
SR567	110/80-16	55	S	4	F	TL
SR567	120/70-16	57	S	4	F	TL

SR568



SR	TIRE SIZE	L.I.	S.S.	PR.	FR.	TL/TT
SR568	90/90-14	46	P	4	R	TL
SR568	110/80-14	59	S	6	R	TL
SR568	140/60-14	64	S	6	R	TL
SR568	140/70-14	68	S	6	R	TL
SR568	150/70-14	66	S	4	R	TL
SR568	160/60-14	65	H	4	R	TL
SR568	130/80-15	63	P	4	R	TL
SR568	140/70-15	69	P	6	R	TL
SR568	160/60-15	67	H	4	R	TL
SR568	100/80-16	50	P	4	R	TL
SR568	120/80-16	60	P	4	R	TL
SR568	130/70-16	61	S	4	R	TL
SR568	130/80-16	64	P	4	R	TL
SR568	140/70-16	65	S	4	R	TL

STREET TIRES

SR601



SR	TIRE SIZE	L.I.	S.S.	PR.	FR.	TL/TT
SR601	2.50-17	38	L	4	F	TT

SR604



SR	TIRE SIZE	L.I.	S.S.	PR.	FR.	TL/TT
SR604	3.00-18	47	P	4	F	TT

SR607



SR	TIRE SIZE	L.I.	S.S.	PR.	FR.	TL/TT
SR607	2.75-18	42	P	4	F	TT

SR609



SR	TIRE SIZE	L.I.	S.S.	PR.	FR.	TL/TT
SR609	90/90-17	49	P	4	F	TL
SR609	90/90-18	51	P	4	F	TL

SR610



SR	TIRE SIZE	L.I.	S.S.	PR.	FR.	TL/TT
SR610	70/100-16	40	P	4	F	TL
SR610	90/90-18	51	P	4	F	TL
SR610	3.50-18	56	H	4	B	TL
SR610	4.00-18	64	H	4	B	TL

SR612



SR	TIRE SIZE	L.I.	S.S.	PR.	FR.	TL/TT
SR612	90/90-18	51	P	4	F	TL

SR613



SR	TIRE SIZE	L.I.	S.S.	PR.	FR.	TL/TT
SR613	2.75-17	41	P	4	F	TL
SR613	2.75-18	42	P	4	F	TL
SR613	80/100-17	46	S	4	F	TL

SR614



SR	TIRE SIZE	L.I.	S.S.	PR.	FR.	TL/TT
SR614	100/90-17	61	P	6	R	TL
SR614	120/80-17	67	P	6	R	TL

SR701



SR	TIRE SIZE	L.I.	S.S.	PR.	FR.	TL/TT
SR701	2.50-17	38	L	4	R	TT
SR701	2.50-18	40	L	4	R	TT

SR704



SR	TIRE SIZE	L.I.	S.S.	PR.	FR.	TL/TT
SR704	2.25-17	33	L	4	R	TT

SR706



SR	TIRE SIZE	L.I.	S.S.	PR.	FR.	TL/TT
SR706	3.00-18	47	P	4	R	TT

SR710



SR	TIRE SIZE	L.I.	S.S.	PR.	FR.	TL/TT
SR710	4.10-18	59	S	4	R	TL

STREET TIRES

SR713



SR	TIRE SIZE	L.I.	S.S.	PR.	FR.	TL/TT
SR713	3.60-18	51	H	4	B	TL
SR713	80/90-18	45	P	4	B	TL

SR714



SR	TIRE SIZE	L.I.	S.S.	PR.	FR.	TL/TT
SR714	110/80-14	59	S	6	R	TL
SR714	2.25-16	31	L	4	B	TT
SR714	70/90-16	42	J	4	B	TL
SR714	80/80-16	45	P	4	B	TL
SR714	90/80-16	51	P	4	B	TL

SR716



SR	TIRE SIZE	L.I.	S.S.	PR.	FR.	TL/TT
SR716	100/90-17	55	P	4	B	TL

SR717



SR	TIRE SIZE	L.I.	S.S.	PR.	FR.	TL/TT
SR717	110/90-16	59	P	4	B	TL

SR720



SR	TIRE SIZE	L.I.	S.S.	PR.	FR.	TL/TT
SR720	80/100-16	51	P	4	B	TL

SR722



SR	TIRE SIZE	L.I.	S.S.	PR.	FR.	TL/TT
SR722	2.75-19	43	P	4	F	TL
SR722	4.10-18	59	P	4	R	TL

SR723



SR	TIRE SIZE	L.I.	S.S.	PR.	FR.	TL/TT
SR723	2.75-16	40	P	4	B	TL

SR724



SR	TIRE SIZE	L.I.	S.S.	PR.	FR.	TL/TT
SR724	3.00-16	48	P	6	B	TL

SR742



SR	TIRE SIZE	L.I.	S.S.	PR.	FR.	TL/TT
SR742	2.75-17	47	P	4	B	TL

SR745



SR	TIRE SIZE	L.I.	S.S.	PR.	FR.	TL/TT
SR745	2.75-17	47	P	6	B	TL

SR877



SR	TIRE SIZE	L.I.	S.S.	PR.	FR.	TL/TT
SR877	70/90-14	34	P	4	R	TL
SR877	80/90-14	40	P	4	R	TL
SR877	90/80-14	49	P	4	R	TL
SR877	3.00-17	50	P	4	R	TT
SR877	70/90-17	38	P	4	R	TL
SR877	80/80-17	41	P	4	R	TL
SR877	80/90-17	44	P	4	R	TL
SR877	90/80-17	46	S	4	R	TL
SR877	100/80-17	52	S	4	R	TL
SR877	100/90-17	55	P	4	R	TL
SR877	120/80-17	61	P	4	R	TL
SR877	2.75-18	48	P	6	R	TL
SR877	3.00-18	52	P	6	R	TL

SR898



SR	TIRE SIZE	L.I.	S.S.	PR.	FR.	TL/TT
SR898	80/80-14	43	P	6	B	TL
SR898	70/90-17	38	P	4	B	TL
SR898	80/80-17	41	P	4	B	TL
SR898	80/90-17	44	P	4	B	TL
SR898	90/80-17	46	P	4	B	TL
SR898	100/80-17	52	S	4	B	TL



STREET TIRES / SCOOTER

K-3 **NEW**



SR	TIRE SIZE	L.I.	S.S.	PR.	FR.	TL/TT
K-3	70/90-17	38	P	4	B	TL
K-3	80/80-17	41	P	4	B	TL
K-3	80/90-17	44	P	4	B	TL
K-3	90/80-17	46	S	4	B	TL
K-3	100/70-17	49	P	4	B	TL
K-3	110/70-17	58	H	4	B	TL
K-3	130/70-17	62	H	4	B	TL

SR006



SR	TIRE SIZE	L.I.	S.S.	PR.	FR.	TL/TT
SR006	120/70-12	56	J	4	F	TL
SR006	130/70-12	59	J	4	R	TL

SR007



SR	TIRE SIZE	L.I.	S.S.	PR.	FR.	TL/TT
SR007	110/70-12	47	P	4	F	TL
SR007	110/90-12	64	P	4	F	TL
SR007	120/70-14	61	P	4	F	TT
SR007	130/90-10	70	J	4	R	TL
SR007	120/70-11	50	L	4	R	TL
SR007	130/70-11	60	L	4	R	TL
SR007	130/70-12	62	P	4	R	TL
SR007	140/70-12	60	P	4	R	TL
SR007	140/70-14	68	P	4	R	TL

SR009



SR	TIRE SIZE	L.I.	S.S.	PR.	FR.	TL/TT
SR009	3.50-10	51	J	4	B	TL
SR009	110/70-12	47	J	4	B	TL
SR009	120/70-12	51	J	4	B	TL

SR400



SR	TIRE SIZE	L.I.	S.S.	PR.	FR.	TL/TT
SR400	2.50-10	33	J	4	B	TT

SR401



SR	TIRE SIZE	L.I.	S.S.	PR.	FR.	TL/TT
SR401	3.00-10	42	J	4	B	TT
SR401	3.00-12	47	J	4	B	TT

SR402



SR	TIRE SIZE	L.I.	S.S.	PR.	FR.	TL/TT
SR402	3.50-8	46	J	4	B	TT
SR402	3.50-10	51	J	4	B	TT
SR402	4.00-10	69	J	4	B	TT

SR412



SR	TIRE SIZE	L.I.	S.S.	PR.	FR.	TL/TT
SR412	3.00-10	42	J	4	B	TL

SR425



SR	TIRE SIZE	L.I.	S.S.	PR.	FR.	TL/TT
SR425	3.00-10	42	J	4	F	TL
SR425	3.50-10	51	J	4	F	TL
SR425	110/80-10	58	J	4	F	TL
SR425	90/90-10	50	J	4	R	TL
SR425	100/80-10	53	J	4	R	TL
SR425	100/90-10	56	J	4	R	TL
SR425	120/90-10	66	J	4	B	TL
SR425	130/70-10	52	J	4	B	TL
SR425	130/90-10	70	J	4	B	TL
SR425	130/60-13	53	J	4	B	TL

SR426



SR	TIRE SIZE	L.I.	S.S.	PR.	FR.	TL/TT
SR426	3.00-10	42	J	4	B	TT
SR426	120/90-10	66	J	4	B	TL
SR426	130/90-10	70	J	4	B	TL
SR426	120/70-12	51	P	4	B	TL
SR426	130/70-12	62	P	4	B	TL
SR426	130/60-13	53	L	4	B	TL

SR428



SR	TIRE SIZE	L.I.	S.S.	PR.	FR.	TL/TT
SR428	3.50-10	51	J	4	B	TL
SR428	120/70-12	51	J	4	B	TL
SR428	130/70-12	56	J	4	B	TL

SR429



SR	TIRE SIZE	L.I.	S.S.	PR.	FR.	TL/TT
SR429	120/70-13	53	L	4	B	TL
SR429	130/60-13	53	L	4	B	TL

SCOOTER

SR501



SR	TIRE SIZE	L.I.	S.S.	PR.	FR.	TL/TT
SR501	4.00-8	44	J	4	B	TT
SR501	4.00-8	55	J	6	B	TT

SR502



SR	TIRE SIZE	L.I.	S.S.	PR.	FR.	TL/TT
SR502	4.00-8	55	J	6	B	TT

SR560



SR	TIRE SIZE	L.I.	S.S.	PR.	FR.	TL/TT
SR560	3.50-10	51	J	4	B	TL

SR561



SR	TIRE SIZE	L.I.	S.S.	PR.	FR.	TL/TT
SR561	100/90-10	56	J	4	B	TL

SR562



SR	TIRE SIZE	L.I.	S.S.	PR.	FR.	TL/TT
SR562	100/90-10	56	J	4	B	TL
SR562	110/90-10	51	J	2	B	TL
SR562	90/90-12	44	J	2	B	TL

SR565



SR	TIRE SIZE	L.I.	S.S.	PR.	FR.	TL/TT
SR565	120/70-10	54	L	4	B	TL

SR566



SR	TIRE SIZE	L.I.	S.S.	PR.	FR.	TL/TT
SR566	90/90-10	50	J	4	B	TL

SR567



SR	TIRE SIZE	L.I.	S.S.	PR.	FR.	TL/TT
SR567	110/70-11	45	L	4	F	TL
SR567	120/70-11	50	P	4	F	TL
SR567	110/90-12	64	P	6	F	TL
SR567	110/90-13	56	P	4	F	TL
SR567	120/70-13	53	P	4	F	TL

SR568



SR	TIRE SIZE	L.I.	S.S.	PR.	FR.	TL/TT
SR568	120/70-10	54	L	6	R	TL
SR568	130/70-11	60	P	6	R	TL
SR568	140/70-12	65	P	6	R	TL
SR568	130/70-12	62	P	6	R	TL
SR568	130/60-13	60	P	4	R	TL
SR568	130/70-13	63	P	4	R	TL
SR568	140/60-13	63	P	4	R	TL
SR568	150/70-13	64	S	4	R	TL

SR570



SR	TIRE SIZE	L.I.	S.S.	PR.	FR.	TL/TT
SR570	120/70-13	53	S	4	F	TL

SR571



SR	TIRE SIZE	L.I.	S.S.	PR.	FR.	TL/TT
SR571	140/60-14	64	S	6	R	TL

SR879



SR	TIRE SIZE	L.I.	S.S.	PR.	FR.	TL/TT
SR879	90/90-12	54	J	4	F	TL



SCOOTER / RACING KART TIRES / GOLF CAR / GARDEN

SR723



SR	TIRE SIZE	L.I.	S.S.	PR.	FR.	TL/TT
SR723	120/70-10	54	P	6	F	TL
SR723	110/70-11	45	P	4	F	TL
SR723	120/70-12	58	P	4	F	TL
SR723	130/70-12	62	P	4	R	TL
SR723	130/60-13	60	P	4	R	TL

SR723 / WW



SR	TIRE SIZE	L.I.	S.S.	PR.	FR.	TL/TT
SR723	120/70-10	54	P	6	F	TL
SR723	110/70-11	45	P	4	F	TL
SR723	110/70-12	47	P	4	B	TL
SR723	120/70-12	58	P	4	F	TL
SR723	130/70-12	62	P	4	R	TL
SR723	140/70-12	65	P	6	B	TL

SR550 / WW

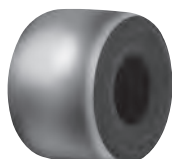


SR	TIRE SIZE	L.I.	S.S.	PR.	FR.	TL/TT
SR550	3.50-8	46	J	4	B	TT
SR550	4.00-8	55	J	4	B	TT
SR550	3.00-10	50	J	6	B	TT
SR550	3.50-10	59	J	6	B	TT
SR550	3.50-10	59	J	6	B	TL

RACING KART TIRES



[Front F508]



[Rear R508]



[Front F600]



[Rear R600]

PATTERN	TIRE SIZE	RIM WIDTH(inch)		OVERALL	WIDTH
		RANGE	STANDARD		
F508	3.6X10.0-5	3.5 ~ 5	4	252	120
F508	4.5X10.0-5	4 ~ 5.5	4.5	261	135
R508	6.0X11.0-5	5 ~ 7	6	273	135
R508	7.1X11.0-5	7 ~ 8.5	8	267	273
F600	4.5X10.0-5	4 ~ 5.5	4.5	261	135
R600	6.0X11.0-5	5 ~ 7	6	276	180
F600A	4.5X10.0-5	4 ~ 5.5	4.5	257	137
R600A	6.0X11.0-5	5 ~ 7	6	274	186

GOLF CAR TIRES & GARDEN TIRES



[SR852]
13X6.50-6
16X6.50-8



[SR853]
15X6.00-6



[SR854]
18X8.50-8
18X6.50-8



[SR855](SR851)
13X5.00-6 / 14X5.00-6
14X6.00-6 / 15X6.00-6
16X6.50-8 / 18X8.50-8



[SR933A]
190/50-12 SR933
18X8.50-8 SR933A



[SR575]
165/60-12



[SR860]
18X8.50-8
190/50-12

ATV TIRES



[Front SR900]
AT25X8-12



[Rear SR901]
AT25X10-12
18X7.00-7 [BOTH]



[SR910]
AT22X7-10 Front
AT22X10-10 Rear



[Front SR951]
20X7-8



[Rear SR952]
22X10-8



[SR902]
19X7.00-8 Front
18X9.50-8 Rear



[SR953]
145/70-6



[SR954]
22X11-8



[Front SR955]
20X7-8
21X7-10



[Rear SR956]
AT22X10-8
AT 22X10-10

TECHNICAL INFORMATION

Tire Structure

"Radial" describes a pneumatic tire structure in which the ply cords extend to the beads and are laid substantially at 90° to the center line of the tread, the carcass being stabilised by an essentially inextensible circumferential belt. On Radial tires, the letter "R" placed in front of the rim-diameter marking. Ex) 120/70R17 58W

"Diagonal" or "Bias ply" describes a pneumatic tire structure in which the ply cords extend to the beads and are laid at alternate angles substantially less than 90° to the center line of the tread.

"Bias belted" describes a pneumatic tire structure of diagonal (bias ply) type in which the carcass is restricted by a belt comprising two or more layers of substantially inextensible cord material laid at alternate angles close to those of the carcass.

Speed Symbol

The SPEED SYMBOL indicates the maximum speed at which the tire can carry a load index under service conditions specified by SHINKO tires. These speeds are shown in Table 1 and apply to tires when in good condition, inflated to the correct pressure, operating within their specific load capacity and fitted to the correct size rim. Speeds quoted are the maximum speed of which the tire is capable, not the speed at which it is normally ridden. All maximum speeds referred to in this data are subject to applicable legal speeds.

[Table 1] Speed Symbol

Speed Symbol	B	F	G	J	K	L	M	N	P	Q	R	S	T	U	H	V	W
Max. km/h	50	80	90	100	110	120	130	140	150	160	170	180	190	200	210	240	270

Load Index

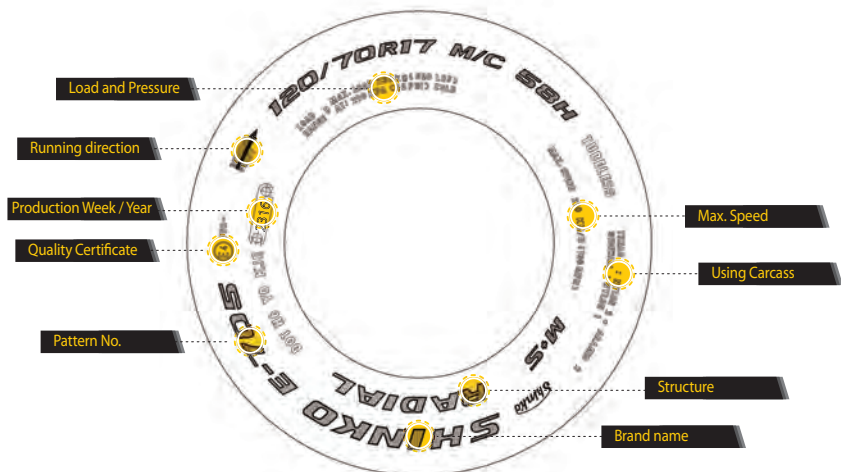
The LOAD INDEX is a numerical code associated with the maximum load a tire can carry (except for loads at speeds above 210 km/h) at the speed indicated by its Speed Symbol under service conditions specified by SHINKO tires. You should only fit replacement tires bearing the precise speed and load specified by SHINKO tires.

You should only fit replacement tires bearing the precise speed and load index referred to in the motorcycle manufacturer's manual. Before you make any variation please consult SHINKO tires to ensure that the replacement tire is a correct fitment for your motorcycle.

[Table 2] Load Index - kg

LI	kg	LI	kg	LI	kg	LI	kg	LI	kg	LI	kg	LI	kg	LI	kg	LI	kg
41	145	48	180	55	218	62	265	69	325	76	400	83	487	90	600	97	730
42	150	49	185	56	224	63	272	70	335	77	412	84	500	91	615	98	750
43	155	50	190	57	230	64	280	71	345	78	425	85	515	92	630	99	775
44	160	51	195	58	236	65	290	72	355	79	437	86	530	93	650	100	800
45	165	52	200	59	243	66	300	73	365	80	450	87	545	94	670	101	825
46	170	53	206	60	250	67	307	74	375	81	462	88	560	95	690	102	850
47	175	54	212	61	257	68	315	75	387	82	475	89	580	96	710	103	875

BASIC KNOWLEDGE OF TIRE



METRIC

120/70R17 M/C 58H

① ② ③ ④ ⑤ ⑥ ⑦

- ① Section Width ② Aspect Ratio ③ Structure Code
④ Rim Diameter ⑤ Motorcycle Tire ⑥ Load Index ⑦ Speed Symbol

- "R" : Radial Tire
• "M" or "D" : Bias ply(or Diagonal) Tire
• "B" : Bias belted Tire

Speed Symbol	Max. Speed (KPH)
B	50
J	100
K	110
L	120
P	150
Q	160
S	180
H	210
V	240
W	270

CODE

5.00 - 16 M/C 69S 22 X 10 - 8

① ② ③ ④ ⑤ ⑥ ⑦ ⑧ ⑨

- ① Section Width ② Structure Code ③ Rim Diameter ④ Motorcycle Tire
⑤ Load Index ⑥ Speed Symbol ⑦ Overall Diameter ⑧ Section Width ⑨ Rim Diameter

- "R" : Radial Tire
• "M" or "D" : Bias ply(or Diagonal) Tire
• "B" : Bias belted Tire

Tire Structure

- "Radial" describes a pneumatic tire structure in which the ply cords extend to the beads and are laid substantially at 90° to the centreline of the tread, the carcass being stabilised by an essentially inextensible circumferential belt.
- "Diagonal" or "bias ply" describes a pneumatic tire structure in which the ply cords extend to the beads and are laid at alternate angles substantially less than 90° to the centre line of the tread.
- "Bias belted" describes a pneumatic tire structure of diagonal (bias-ply) type in which the carcass is restricted by a belt comprising two or more layers of substantially inextensible cord material laid at alternate angles close to those of the carcass.

WARNING

- Please put the pressure specified by the manufacturer of tire or vehicle, check the pressure regularly.
- In case of non-compliance with proper pressure, it may be the cause of abnormal wear and accidents.
- Please drive according to the running direction of the specified tires.
- It is recommended to check the tire condition regularly as once a month.
- When the tire TWI(Tread Wear Indicator) mark appeared, immediately should be replaced with a new tire.
- When mounting or detaching tires and rims, only skilled and trained expert must be working.

FITMENT GUIDE FOR HARLEY DAVIDSON

MODEL	NAME	cid	cc	Year	Front Tire	Shinko	Rear Tire	Shinko
XL883	Sportster	53	883	'04-08	150/90-19	777 H.D.	150/80B16	777 H.D.
XL883C	Sportster 883 Custom	53	883	'04-09	80/90-21	777 H.D.	150/80B16	777 H.D.
XL883C	Sportster 883 Custom	53	883	'99-03	100/90-19	777 H.D.	130/90B16	777 H.D.
XL883L	Sportster 883 Low/SuperLow	53	883	'05-10	100/90-19	777 H.D.	150/80B16	777 H.D.
XL883L	Sportster 883 Low/SuperLow	53	883	'11-16	120/70ZR18	011 Verge	150/60R17	006 Podium
XL883N	Sportster Iron 883	53	883	'09-16	100/90-19	777 H.D.	150/80B16	777 H.D.
XL883R	Sportster 883 Roadster	53	883	'02-03	100/90-19	777 H.D.	130/90B16	777 H.D.
XL883R	Sportster 883 Roadster	53	883	'04-07	100/90-19	777 H.D.	150/80B16	777 H.D.
XLH883	Sportster	53	883	'86-96	100/90-19	777 H.D.	130/90B16	777 H.D.
XLH883DLX	Sportster 883 Deluxe	53	883	'86-95	100/90-19	777 H.D.	130/90B16	777 H.D.
XLH883HUG	Sportster 883 Hugger	53	883	'87-96	100/90-19	777 H.D.	130/90B16	777 H.D.
XLH883HUG	Sportster 883 Hugger	53	883	'97-03	100/90-19	777 H.D.	130/90B16	777 H.D.
XLH884	Sportster	53	883	'97-03	100/90-19	777 H.D.	130/90B16	777 H.D.
XL1200C	Sportster 1200 Custom	73	1200	'04-10	80/90-21	777 H.D.	150/80B16	777 H.D.
XL1200C	Sportster 1200 Custom	73	1200	'11-16	130/90B16	777 H.D.	150/80B16	777 H.D.
XL1200C	Sportster 1200 Custom	73	1200	'96-03	80/90-21	777 H.D.	130/90B16	777 H.D.
XL1200L	Sportster 1200 Low	73	1200	'06-11	100/90-19	777 H.D.	150/80B16	777 H.D.
XL1200N	Sportster 1200 Nightster	73	1200	'07-12	100/90-19	777 H.D.	150/80B16	777 H.D.
XL1200R	Sportster 1200 Roadster	73	1200	'04-08	100/90-19	777 H.D.	150/80B16	777 H.D.
XL1200S	Sportster 1200 Sport	73	1200	'96-03	100/90-19	777 H.D.	130/90B16	777 H.D.
XL1200T	Sportster 1200 Super Low Touring	73	1200	'14-16	120/70ZR18	011 Verge	150/70-17	712R
XL1200V	Sportster Seventy-Two	73	1200	'12-16	80/90-21	777 H.D.	150/80B16	777 H.D.
XL1200X	Sportster Forty-Eight	73	1200	'10-11	130/90B16	777 H.D.	150/80B16	777 H.D.
XL1200X	Sportster Forty-Eight	73	1200	'12-16	130/90B16	777 H.D.	150/80B16	777 H.D.
XL50	50th Anniversary Sportster	73	1200	'07	100/90-19	777 H.D.	150/80B16	777 H.D.
XLH1200	Sportster	73	1200	'88-96	100/90-19	777 H.D.	130/90B16	777 H.D.
XLH1201	Sportster	73	1200	'97-03	100/90-19	777 H.D.	130/90B16	777 H.D.
FLH	Electra Glide	74	1200	'55-64	130/90B16	777 H.D.	130/90B16	777 H.D.
FLH	Electra Glide	74	1200	'70-74	130/90B16	777 H.D.	130/90B16	777 H.D.
FLH	Electra Glide	74	1200	'75-78	130/90B16	777 H.D.	130/90B16	777 H.D.
FLTC	Tour Glide Classic	74	1200	'81-84	130/90B16	777 H.D.	130/90B16	777 H.D.
FXWG	Dyna Wide Glide	74	1200	'80-84	80/90-21	777 H.D.	130/90B16	777 H.D.
FLH	Electra Glide	80	1338	'79	130/90B16	777 H.D.	130/90B16	777 H.D.
FLH	Electra Glide	80	1338	'80-83	130/90B16	777 H.D.	130/90B16	777 H.D.
FLH	Electra Glide	80	1340	'84-85	130/90B16	777 H.D.	130/90B16	777 H.D.
FLHC	Electra Glide Classic	80	1340	'79-81	130/90B16	777 H.D.	130/90B16	777 H.D.
FLHR/I	Road King	80	1340	'94-98	130/90B16	777 H.D.	130/90B16	777 H.D.
FLHRC/I	Road King Classic	80	1340	'98	130/90B16	777 H.D.	130/90B16	777 H.D.
FLHS	Electra Glide Sport	80	1338	'80-84	130/90B16	777 H.D.	130/90B16	777 H.D.
FLHS	Electra Glide Sport	80	1340	'84-93	130/90B16	777 H.D.	130/90B16	777 H.D.
FLHT	Electra Glide	80	1340	'86-87, '95-96	130/90B16	777 H.D.	130/90B16	777 H.D.
FLHT/I	Electra Glide	80	1450	'04-06	130/90B16	777 H.D.	MU85B16	777 H.D.
FLHT/I	Electra Glide	80	1340	'97-98	130/90B16	777 H.D.	130/90B16	777 H.D.
FLHTC	Electra Glide Sport	80	1338	'83-84	130/90B16	777 H.D.	130/90B16	777 H.D.
FLHTC	Electra Glide Sport	80	1340	'84-96	130/90B16	777 H.D.	130/90B16	777 H.D.
FLHTC/I	Electra Glide Sport	80	1340	'97-98	130/90B16	777 H.D.	130/90B16	777 H.D.
FLHTCU/I	Electra Glide Ultra Classic	80	1340	'89-96	130/90B16	777 H.D.	130/90B16	777 H.D.
FLHTCU/I	Electra Glide Ultra Classic	80	1340	'97-98	130/90B16	777 H.D.	130/90B16	777 H.D.
FLHX	Electra Glide Special	80	1340	'84-85	130/90B16	777 H.D.	130/90B16	777 H.D.
FLST/I	Heritage Softail	80	1340	'86-90	130/90B16	777 H.D.	130/90B16	777 H.D.
FLSTC/I	Heritage Softail Classic	80	1340	'88-90	130/90B16	777 H.D.	130/90B16	777 H.D.
FLSTC/I	Heritage Softail Classic	80	1340	'91-97	130/90B16	777 H.D.	130/90B16	777 H.D.
FLSTF/I	Softail Fat Boy	80	1340	'90-98	130/90B16	777 H.D.	130/90B16	777 H.D.
FLSTN/I	Softail Custom/Nostalgia/Special/Deluxe	80	1340	'93-96	130/90B16	777 H.D.	130/90B16	777 H.D.
FLSTS/I	Softail Heritage Springer	80	1340	'97-98	130/90B16	777 H.D.	130/90B16	777 H.D.
FLT	Tour Glide	80	1338	'79-83	130/90B16	777 H.D.	130/90B16	777 H.D.
FLTC	Tour Glide Classic	80	1338	'84-91	130/90B16	777 H.D.	130/90B16	777 H.D.
FLTCU/I	Tour Glide Ultra Classic	80	1340	'89-96	130/90B16	777 H.D.	130/90B16	777 H.D.
FLTR/I	Road Glide	80	1340	'98	130/90B16	777 H.D.	MU85B16	777 H.D.
FXD/I	Dyna Super Glide	80	1340	'95-98	100/90-19	777 H.D.	130/90B16	777 H.D.
FXDB-D	Dyna Glide Daytona	80	1340	'92	100/90-19	777 H.D.	130/90B16	777 H.D.
FXDC/I	Dyna Super Glide Custom	80	1340	'92	100/90-19	777 H.D.	160/70-17	777 H.D.
FXDG	Disc Glide	80	1338	'83	130/90B16	777 H.D.	130/90B16	777 H.D.
FXDL/I	Dyna Low Rider	80	1340	'93-98	100/90-19	777 H.D.	130/90B16	777 H.D.
FXDS-Conv	Dyna Convertible	80	1340	'94-98	100/90-19	777 H.D.	130/90B16	777 H.D.
FXDWG/I	Dyna Wide Glide	80	1340	'93-98	80/90-21	777 H.D.	130/90B16	777 H.D.
FXLR	Dyna Low Rider Custom	80	1340	'87-94	100/90-19	777 H.D.	130/90B16	777 H.D.
FXR	Dyna Super Glide	80	1338	'82-83	100/90-19	777 H.D.	130/90B16	777 H.D.
FXR	Dyna Super Glide	80	1340	'86-94	100/90-19	777 H.D.	130/90B16	777 H.D.
FXRDG	Disc Glide	80	1338	'84	130/90B16	777 H.D.	130/90B16	777 H.D.
FXRS	Dyna Low Glide	80	1338	'82-84	MJ90-19	F250	130/90B16	R250
FXRS	Dyna Low Glide	80	1340	'84-91	MJ90-19	F250	130/90B16	R250
FXRS	Dyna Low Glide	80	1340	'92	100/90-19	777 H.D.	130/90B16	777 H.D.
FXRS-Conv	Dyna Low Rider Sport Convertible	80	1340	'90-91	MJ90-19	F250	130/90B16	R250
FXRS-Conv	Dyna Low Rider Sport Convertible	80	1340	'92-93	100/90-19	777 H.D.	130/90B16	777 H.D.
FXRS-SP	Dyna Low Rider Sport	80	1340	'92-93	100/90-19	777 H.D.	130/90B16	777 H.D.
FXRT	Dyna Sport Glide	80	1338	'83-84	100/90-19	777 H.D.	130/90B16	777 H.D.
FXRT	Dyna Sport Glide	80	1340	'84-92	100/90-19	777 H.D.	130/90B16	777 H.D.



FITMENT GUIDE FOR HARLEY DAVIDSON

MODEL	NAME	cid	cc	Year	Front Tire	Shinko	Rear Tire	Shinko
FXST/I	Softail Standard	80	1340	'84-90	80/90-21	777 H.D.	130/90B16	777 H.D.
FXSTC/I	Softail Custom	80	1340	'86-90	80/90-21	777 H.D.	130/90B16	777 H.D.
FXSTC/I	Softail Custom	80	1340	'91-98	80/90-21	777 H.D.	130/90B16	777 H.D.
FXSTS/I	Springer Softail	80	1340	'88-90	80/90-21	777 H.D.	130/90B16	777 H.D.
FXSTS/I	Springer Softail	80	1340	'91-98	80/90-21	777 H.D.	130/90B16	777 H.D.
FXSTSB	Softail Bad Boy	80	1340	'95-97	100/90-19	777 H.D.	130/90B16	777 H.D.
FXWG	Dyna Wide Glide	80	1338	'84-86	80/90-21	777 H.D.	130/90B16	777 H.D.
FLHR/I	Road King	88	1450	'04-06	130/90B16	777 H.D.	MU85B16	777 H.D.
FLHR/I	Road King	88	1450	'99-03	130/90B16	777 H.D.	130/90B16	777 H.D.
FLHRC/I	Road King Classic	88	1450	'04-06	130/90B16	777 H.D.	MU85B16	777 H.D.
FLHRC/I	Road King Classic	88	1450	'99-03	130/90B16	777 H.D.	130/90B16	777 H.D.
FLHRS/I	Road King Custom	88	1450	'04-06	130/90B16	777 H.D.	MU85B16	777 H.D.
FLHT/I	Electra Glide	88	1450	'99-03	130/90B16	777 H.D.	130/90B16	777 H.D.
FLHTC/I	Electra Glide Classic	88	1450	'04-06	130/90B16	777 H.D.	MU85B16	777 H.D.
FLHTC/I	Electra Glide Classic	88	1450	'99-03	130/90B16	777 H.D.	130/90B16	777 H.D.
FLHTCU/I	Electra Glide Ultra Classic	88	1450	'04-06	130/90B16	777 H.D.	MU85B16	777 H.D.
FLHTCU/I	Electra Glide Ultra Classic	88	1450	'99-03	130/90B16	777 H.D.	130/90B16	777 H.D.
FLHX/I	Street Glide	88	1450	'06	130/90B16	777 H.D.	MU85B16	777 H.D.
FLST/I	Heritage Softail	88	1450	'06	130/90B16	777 H.D.	150/80B16	777 H.D.
FLSTC/I	Heritage Softail Classic	88	1450	'03-06	130/90B16	777 H.D.	150/80B16	777 H.D.
FLSTC/I	Heritage Softail Classic	88	1450	'99-02	130/90B16	777 H.D.	130/90B16	777 H.D.
FLSTF/I	Softail Fat Boy	88	1450	'04-06	130/90B16	777 H.D.	150/80B16	777 H.D.
FLSTF/I	Softail Fat Boy	88	1450	'99-03	130/90B16	777 H.D.	130/90B16	777 H.D.
FLSTN/I	Softail Custom/Nostalgia/Special/Deluxe	88	1450	'05-06	130/90B16	777 H.D.	MU85B16	777 H.D.
FLSTS/I	Softail Heritage Springer	88	1450	'03	130/90B16	777 H.D.	MU85B16	777 H.D.
FLSTS/I	Softail Heritage Springer	88	1450	'99-02	130/90B16	777 H.D.	130/90B16	777 H.D.
FLSTSC/I	Softail Springer Classic	88	1450	'05-06	130/90B16	777 H.D.	150/80B16	777 H.D.
FLTR/I	Road Glide	88	1450	'99-06	130/90B16	777 H.D.	MU85B16	777 H.D.
FXD/I	Dyna Super Glide	88	1450	'02-05	100/90-19	777 H.D.	150/80B16	777 H.D.
FXD/I	Dyna Super Glide	88	1450	'06	100/90-19	777 H.D.	160/70-17	777 H.D.
FXD/I	Dyna Super Glide	88	1450	'99-01	100/90-19	777 H.D.	130/90B16	777 H.D.
FXDB/I	Dyna Street Bob	88	1450	'06	100/90-19	777 H.D.	160/70-17	777 H.D.
FXDC/I	Dyna Super Glide Custom	88	1450	'05-06	100/90-19	777 H.D.	160/70-17	777 H.D.
FXD135	Dyna 35th Anniversary Super Glide	88	1450	'06	100/90-19	777 H.D.	160/70-17	777 H.D.
FXD/L	Dyna Low Rider	88	1450	'02-05	100/90-19	777 H.D.	150/80B16	777 H.D.
FXD/L	Dyna Low Rider	88	1450	'06	100/90-19	777 H.D.	160/70-17	777 H.D.
FXD/L	Dyna Low Rider	88	1450	'99-01	100/90-19	777 H.D.	130/90B16	777 H.D.
FXDS-Conv	Dyna Convertible	88	1450	'99-00	100/90-19	777 H.D.	130/90B16	777 H.D.
FXDWG/I	Dyna Wide Glide	88	1450	'02-05	80/90-21	777 H.D.	150/80B16	777 H.D.
FXDWG/I	Dyna Wide Glide	88	1450	'06	80/90-21	777 H.D.	160/70-17	777 H.D.
FXDWG/I	Dyna Wide Glide	88	1450	'99-01	80/90-21	777 H.D.	130/90B16	777 H.D.
FXDX/I	Dyna Super Glide Sport	88	1450	'02-05	100/90-19	777 H.D.	150/80B16	777 H.D.
FXDX/I	Dyna Super Glide Sport	88	1450	'99-01	100/90-19	777 H.D.	130/90B16	777 H.D.
FXDXT	Dyna Super Glide T-Sport	88	1450	'01	100/90-19	777 H.D.	130/90B16	777 H.D.
FXDXT	Dyna Super Glide T-Sport	88	1450	'02-03	100/90-19	777 H.D.	150/80B16	777 H.D.
FXR2	Dyna	88	1450	'99	80/90-21	777 H.D.	130/90B16	777 H.D.
FXR3	Dyna	88	1450	'99	80/90-21	777 H.D.	130/90B16	777 H.D.
FXST/I	Softail Standard	88	1450	'03-05	80/90-21	777 H.D.	150/80B16	777 H.D.
FXST/I	Softail Standard	88	1450	'06	80/90-21	777 H.D.	200/55VR17	011 Verge
FXST/I	Softail Standard	88	1450	'99-02	80/90-21	777 H.D.	130/90B16	777 H.D.
FXSTB/I	Softail Night Train	88	1450	'03-05	80/90-21	777 H.D.	150/80B16	777 H.D.
FXSTB/I	Softail Night Train	88	1450	'06	80/90-21	777 H.D.	200/55ZR17	011 Verge
FXSTB/I	Softail Night Train	88	1450	'99-02	80/90-21	777 H.D.	130/90B16	777 H.D.
FXSTC/I	Softail Custom	88	1450	'99	80/90-21	777 H.D.	130/90B16	777 H.D.
FXSTD/I	Softail Deuce	88	1450	'00-06	80/90-21	777 H.D.	160/70-17	777 H.D.
FXSTS/I	Springer Softail	88	1450	'00-02	80/90-21	777 H.D.	130/90B16	777 H.D.
FXSTS/I	Springer Softail	88	1450	'03-05	80/90-21	777 H.D.	150/80B16	777 H.D.
FXSTS/I	Springer Softail	88	1450	'06	80/90-21	777 H.D.	200/55VR17	011 Verge
FXSTS/I	Springer Softail	88	1450	'99	80/90-21	777 H.D.	130/90B16	777 H.D.
FXDB-S	Dyna Glide Sturgis	91	1340	'91	100/90-19	777 H.D.	130/90B16	777 H.D.
FLHRSEI	CVO Screamin' Eagle Road King	95	1550	'02	130/90B16	777 H.D.	130/90B16	777 H.D.
FLHR	Road King	96	1584	'07-08	130/90B16	777 H.D.	MU85B16	777 H.D.
FLHR	Road King	96	1584	'09-11	130/80-17	SR777	180/65B16	777 H.D.
FLHRC	Road King Classic	96	1584	'07-08	130/90B16	777 H.D.	MU85B16	777 H.D.
FLHRC	Road King Classic	96	1584	'09-10	130/90B16	777 H.D.	180/65B16	777 H.D.
FLHRS	Road King Custom	96	1584	'07	130/90B16	777 H.D.	MU85B16	777 H.D.
FLHT	Electra Glide	96	1584	'07-09	130/90B16	777 H.D.	MU85B16	777 H.D.
FLHTC	Electra Glide Classic	96	1584	'07-08	130/90B16	777 H.D.	MU85B16	777 H.D.
FLHTC	Electra Glide Classic	96	1584	'09-11	130/80-17	SR777	180/65B16	777 H.D.
FLHTCU	Electra Glide Ultra Classic	96	1584	'07-08	130/90B16	777 H.D.	MU85B16	777 H.D.
FLHTCU	Electra Glide Ultra Classic	96	1584	'09-11	130/80-17	SR777	180/65B16	777 H.D.
FLHX	Street Glide	96	1584	'07-08	130/90B16	777 H.D.	MU85B16	777 H.D.
FLSTC	Heritage Softail Classic	96	1584	'07-11	130/90B16	777 H.D.	150/80B16	777 H.D.
FLSTF	Softail Fat Boy	96	1584	'07-11	140/75VR17	011 Verge	200/55VR17	011 Verge
FLSTFB	Softail Fat Boy Low	96	1584	'10-11	140/75VR17	011 Verge	200/55VR17	011 Verge
FLSTN	Softail Custom/Nostalgia/Special/Deluxe	96	1584	'07-11	130/90B16	777 H.D.	MU85B16	777 H.D.
FLSTSB	Softail Cross Bones	96	1584	'08-11	130/90B16	777 H.D.	200/55VR17	011 Verge
FLSTSC	Softail Springer Classic	96	1584	'07	130/90B16	777 H.D.	150/80B16	777 H.D.

FITMENT GUIDE FOR HARLEY DAVIDSON

MODEL	NAME	cid	cc	Year	Front Tire	Shinko	Rear Tire	Shinko
FLTR	Road Glide	96	1584	'07-08	130/90B16	777 H.D.	MU85B16	777 H.D.
FLTRX	Road Glide Custom	96	1584	'10-11	130/80-17	SR777	180/65B16	777 H.D.
FXCWC	Softail Rocker C	96	1584	'08-11	80/90-21	777 H.D.	200/55VR17	011 Verge
FXD	Dyna Super Glide	96	1584	'07-10	100/90-19	777 H.D.	160/70-17	777 H.D.
FXDB	Dyna Street Bob	96	1584	'07-13	100/90-19	777 H.D.	160/70-17	777 H.D.
FXDC	Dyna Super Glide Custom	96	1584	'07-13	100/90-19	777 H.D.	160/70-17	777 H.D.
FXDF	Dyna Fat Bob	96	1584	'08-11	130/90B16	777 H.D.	180/70R16	SE890
FXDL	Dyna Low Rider	96	1584	'07-09	100/90-19	777 H.D.	160/70-17	777 H.D.
FXDWG	Dyna Wide Glide	96	1584	'07-08	80/90-21	777 H.D.	160/70-17	777 H.D.
FXS	Softail Blackline	96	1584	'11	80/90-21	777 H.D.	MU85B16	777 H.D.
FXST	Softail Standard	96	1584	'07	80/90-21	777 H.D.	200/55VR17	011 Verge
FXSTB	Softail Night Train	96	1584	'07-09	80/90-21	777 H.D.	200/55VR17	011 Verge
FXSTC	Softail Custom	96	1584	'07-10	80/90-21	777 H.D.	200/55VR17	011 Verge
FXSTD	Softail Deuce	96	1584	'07	80/90-21	777 H.D.	160/70-17	777 H.D.
FLD	Dyna Switchback	103	1690	'12-16	130/70-18	SR733	160/70-17	777 H.D.
FLHR	Road King	103	1690	'12-16	130/70-18	SR777	180/65B16	777 H.D.
FLHR-ANV	Road King 110th Anniv Ed	103	1690	'13	130/80-17	SR777	180/65B16	777 H.D.
FLHRC	Road King Classic	103	1690	'11-13	130/90B16	777 H.D.	180/65B16	777 H.D.
FLHRSEI2	CVO Screamin' Eagle Road King	103	1690	'03	130/90B16	777 H.D.	130/90B16	777 H.D.
FLHTC	Electra Glide Classic	103	1690	'12-13	130/80-17	SR777	180/65B16	777 H.D.
FLHTCSE	CVO Screamin' Eagle Electra Glide	103	1690	'04	130/90B16	777 H.D.	MU85B16	777 H.D.
FLHTCSE2	CVO Screamin' Eagle Electra Glide	103	1690	'05	130/90B16	777 H.D.	MU85B16	777 H.D.
FLHTCU	Electra Glide Ultra Classic	103	1690	'12-16	130/80-17	SR777	180/65B16	777 H.D.
FLHTCUL	Electra Glide Ultra Classic Low	103	1690	'15-16	130/80-17	SR777	180/65B16	777 H.D.
FLHTCUSE	CVO Screamin' Eagle Ultra Electra Glide	103	1690	'06	130/90B16	777 H.D.	MU85B16	777 H.D.
FLHTK	Electra Glide Ultra Limited	103	1690	'10-16	130/80-17	SR777	180/65B16	777 H.D.
FLHTK-ANV	Electra Glide Ultra Limited 110th Anniv Ed	103	1690	'13	130/80-17	SR777	180/65B16	777 H.D.
FLHTKL	Electra Glide Ultra Limited Low	103	1690	'15-16	130/80-17	SR777	180/65B16	777 H.D.
FLHX	Street Glide	103	1690	'12-13	130/70-18	SR733	180/65B16	777 H.D.
FLHX	Street Glide	103	1690	'14-16	130/60B19	777 H.D.	180/65B16	777 H.D.
FLHXS	Street Glide Special	103	1690	'15-16	130/60B19	777 H.D.	180/65B16	777 H.D.
FLS	Softail Slim	103	1690	'12-16	130/90B16	777 H.D.	MU85B16	777 H.D.
FLSTC	Heritage Softail Classic	103	1690	'12-16	130/90B16	777 H.D.	150/80B16	777 H.D.
FLSTC-ANV	Heritage Softail Classic 110th Anniv Ed	103	1690	'13	130/90B16	777 H.D.	150/80B16	777 H.D.
FLSTF	Softail Fat Boy	103	1690	'12-16	140/75VR17	011 Verge	200/55VR17	011 Verge
FLSTFB	Softail Fat Boy Low	103	1690	'12-16	140/75VR17	011 Verge	200/55VR17	011 Verge
FLSTFSE	CVO Screamin' Eagle Fat Boy	103	1690	'05	130/90B16	777 H.D.	150/80B16	777 H.D.
FLSTN	Softail Custom/Nostalgia/Special/Deluxe	103	1690	'12-16	130/90B16	777 H.D.	MU85B16	777 H.D.
FLTRU	Road Glide Ultra	103	1690	'11-13, '16	130/80-17	SR777	180/65B16	777 H.D.
FLTRX	Road Glide Custom	103	1690	'12-13	130/80-17	SR777	180/65B16	777 H.D.
FLTRX	Road Glide	103	1690	'15-16	130/60B19	777 H.D.	180/65B16	777 H.D.
FLTRXS	Road Glide Special	103	1690	'15-16	130/60B19	777 H.D.	180/65B16	777 H.D.
FXDB	Dyna Street Bob	103	1690	'14-16	100/90-19	777 H.D.	160/70-17	777 H.D.
FXDC	Dyna Super Glide Custom	103	1690	'14	100/90-19	777 H.D.	160/70-17	777 H.D.
FXDC-ANV	Dyna Super Glide Custom 110th Anniv Ed	103	1690	'13	100/90-19	777 H.D.	160/70-17	777 H.D.
FXDF	Dyna Fat Bob	103	1690	'12-16	130/90B16	777 H.D.	180/70R16	SE890
FXDL	Dyna Low Rider	103	1690	'15-16	100/90-19	777 H.D.	160/70-17	777 H.D.
FXDSE	CVO Screamin' Eagle Dyna	103	1690	'07	80/90-21	777 H.D.	170/60B17	011 Verge
FXS	Softail Blackline	103	1690	'12-13	80/90-21			