



Your One Stop Shop For Kitchen And Bath Improvement Products



Scan QR Code for More Info.

Apex Building Material Supply Inc.



Los Angeles
323-587-3556

Fresno
559-233-3276

Clovis
559-294-1401

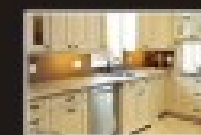
Bakersfield
661-664-5735



Granite



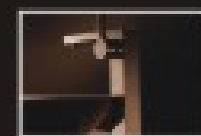
Quartz



Cabinets



Sinks



Faucets



Vanity Sinks



Shower Panels



Flooring





We are a direct importer of kitchen and bath home improvement products. Prefabricated granite & quartz countertops, cabinets, sinks and faucets are our specialty.

We have over ten years of experience in Kitchen & Bath cabinetry and have more than ten lines of cabinets in stock, including 1", 1/4" full overlay, raised, and shaker styles. We carry over 60 different colors of granite and marble from all over the world as well as a complete line of kitchen sinks and faucets at wholesale price. **OPEN TO THE PUBLIC!**

Email us at

E-Mail: Sales@ApexGraniteOutlet.com

FRESNO Location
Call 559-233-3276

LOS ANGELES Location
Call 323-587-3556

Showroom & Warehouse Address

Showroom & Warehouse Address

2349 Monterey St, Fresno, CA 93721

5816 S Boyle Ave, Vernon, CA 90058

Between M & N Street by Rich Bakery,
Behind Downtown CIVIC Center.

Between Slauson and Boyle Ave, Across
Staples & Home Depot

BAKERSFIELD Location
Call 661-664-5735

CLOVIS Location
Call 559-294-1401

Address Showroom & Warehouse Address

Showroom & Warehouse Address

8475 Pacheco Road, Bakersfield, CA 93311

1020 Holland Ave, Clovis, CA 93612

Between Gosford Rd and Pacheco Rd
Across Home Depot and Behind Walmart

Between Clovis Ave and Gettysburg Ave,
Behind 84 Lumber

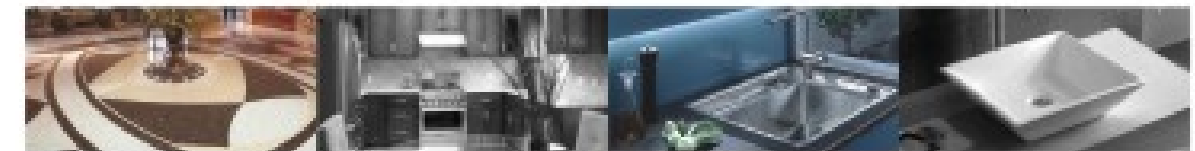
Our granite and quartz countertops have the highest quality. Each piece of stone is checked individually by our team of quality control specialists, to ensure it is of the highest standard before coming in to our warehouses.

Our sinks (Cadell Brand) are produced by utilizing superior material (18/10 stainless steel sheet), exclusive design and technology that dominates. Together, we offer the best of the best... a sink collection designed for the finest of American homes (The cadell sink factory also manufactures sinks for Home Depot and Lowe's).

Cadell faucets are also our finest collection of kitchen and bath faucets. These faucets are constructed from solid brass and zinc die-cast for years of exceptional performance, reliable craftsmanship in producing quality finished products.

We also offer one of the largest selections of the most functional and fashionable cabinetry across all price points in framed and frameless categories, these are suitable for any single family, multi-unit, custom design, new, or remodel project. Our selection includes cherry, maple, oak, and birch solid wood cabinets that are great for any kitchen, bath, and laundry room.

Our mission is to provide our customers with the highest standard of countertops, cabinets, faucets, sinks, and flooring at the most reasonable price.



Contents

Granite Countertops	01/10
Quartz Countertops	11/14
Kitchen Cabinets	15/20
Kitchen Sinks	21/30
Faucets	31/52
Vanity Sinks	53/54
Shower Panels	55/60
Flooring	61/62
ADA Products	63/64

Countertop Products

Finding the perfect countertop for the most active room in your home can be a challenge. In addition to being durable, the countertop you choose must be easy to clean and attractive. Think it's an impossible mission? We'll give you the rundown on different types of countertops - including edging and textures - to help you choose the best surface for your kitchen.

Products

Granite Countertops
Quartz Countertops

www.apexgraniteoutlet.com



Granite Slabs



Slab Inspections



Container Shipping



Showroom Displays

Granite Countertops

Application:

Kitchen, Bathroom, Fireplace, Flooring and Outdoors

Description:

Great for a DIY project, these countertops are available in 7 sizes of blanks

- 26"x98" Front Bullnose Only
- 26"x98" Front and Left or Right Bullnose
- 26"x114" Front Bullnose Only
- 26"x114" Front and Left or Right Bullnose
- 36"x96" Island 3 side Bullnoses
- 42"x96" Island 3 side Bullnoses
- 52"x114" Island 3 side Bullnoses

They're ready to be cut to size to fit your application.
These blanks feature a finished edge on the front and left or right bullnoses.

Granite

Countertops

Granite

Countertops



Model: Tan Brown



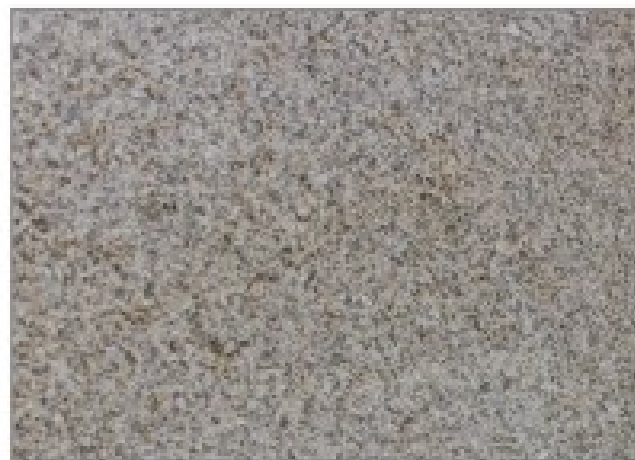
Model: Tiger Skin White



Model: Giallo Ornamental



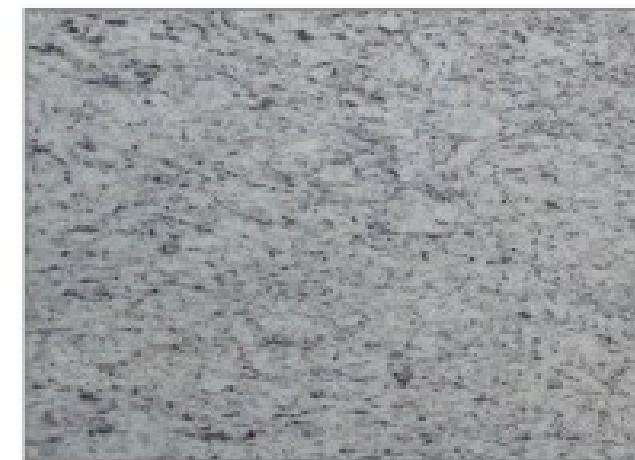
Model: White Flower



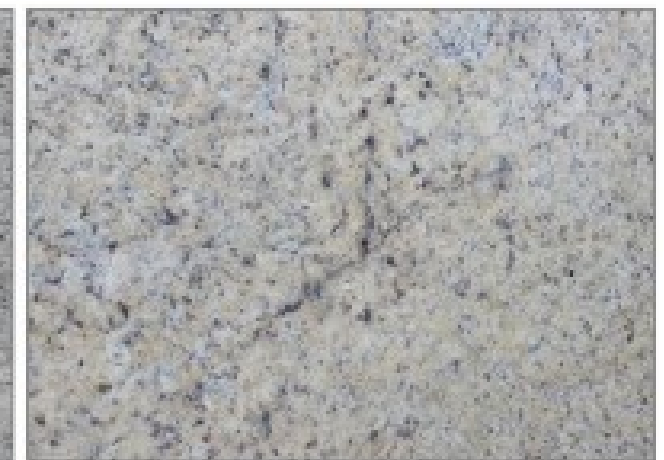
Model: China Yellow



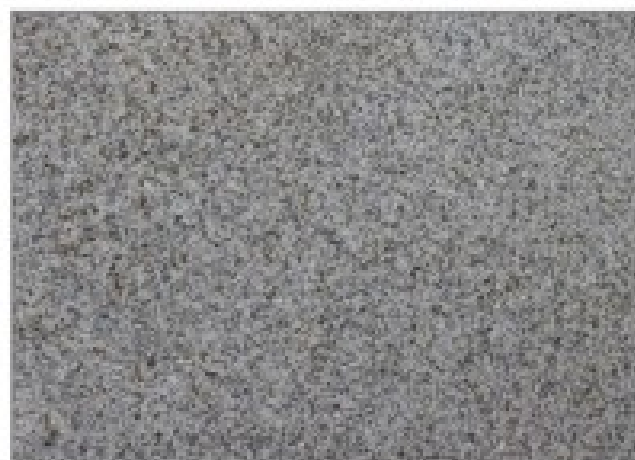
Model: Pepper White(G603)



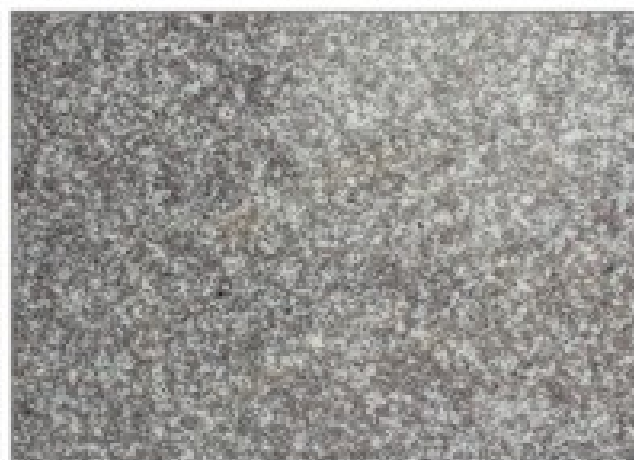
Model: New Ornamental



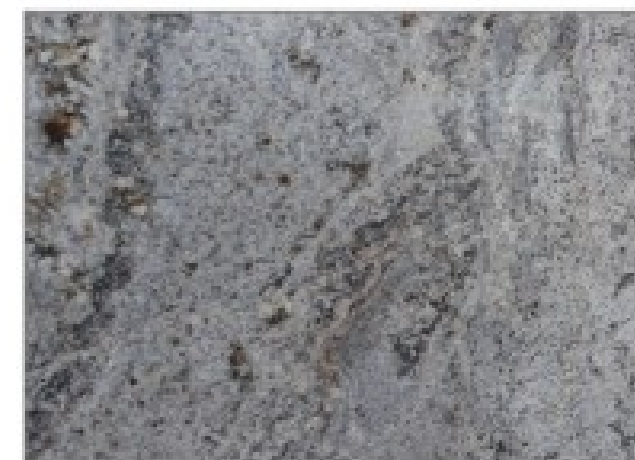
Model: Brazilian Gold



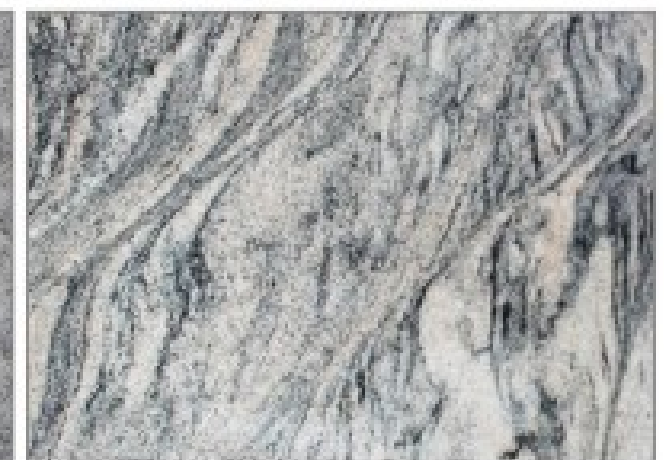
Model: Golden Garnet



Model: Rainbrook Brown(G664)



Model: Sage Brush



Model: Juparana Colombo

Granite

Countertops

Granite

Countertops



Model: Bianco Antico



Model: River White



Model: White Galaxy



Model: Ice Blue



Model: Steel Grey (Leather Finished)



Model: Angola Black (Leather Finished)



Model: Norseland Green



Model: Mongolian Black



Model: Green Butterfly



Model: Emerald Pearl



Model: Lapidus Gold



Model: African Canyon

Granite

Countertops

Granite

Countertops



Model Asteria Gold



Model Golden Pania(Crystal Yellow)



Model Agate Crystal



Model Yellow Butterfly



Model Venetian Gold Classic



Model Santa Cecilia Gold



Model Ube Tuba



Model Ocean Mist



Model Baltic Brown



Model Giallo Florito(Yellow)



Model Narni Gold



Model African Bordeaux

Granite

Countertops

Granite

Countertops



Model: Namibia Green



Model: Grey Galaxy (Ammonite Grey)



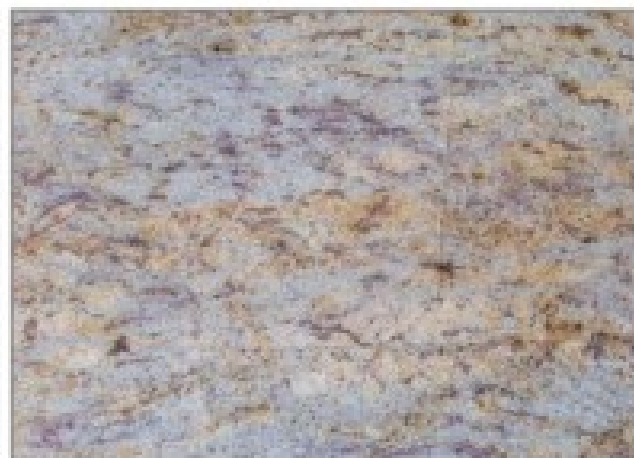
Model: Mary Gold



Model: Brazilian Gold Classic



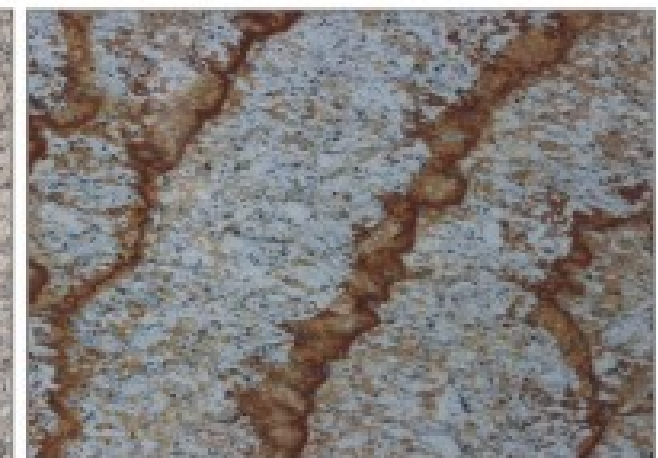
Model: New River White



Model: Orlando Gold



Model: New Venetian Gold



Model: Millennium Gold



Quartz

Countertops



Model: APX1726C02



Model: APX1726F00



Model: APX1726H00



Model: APX1726H05



Model: APX1726H07



Model: APX1726H08

Quartz

Countertops

Quartz

Countertops



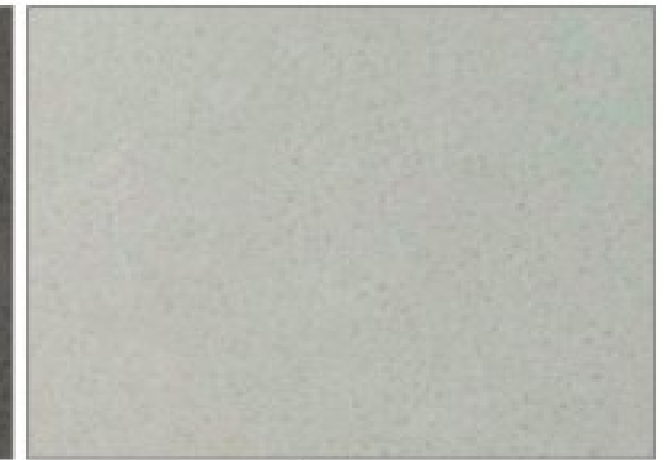
White canvas
Model: APX1726HD5



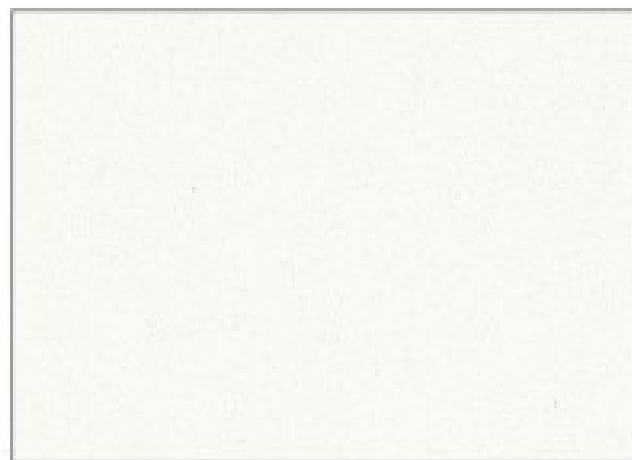
White Pure
Model: APX1726HE0



Crystal Gray
Model: APX1726C01



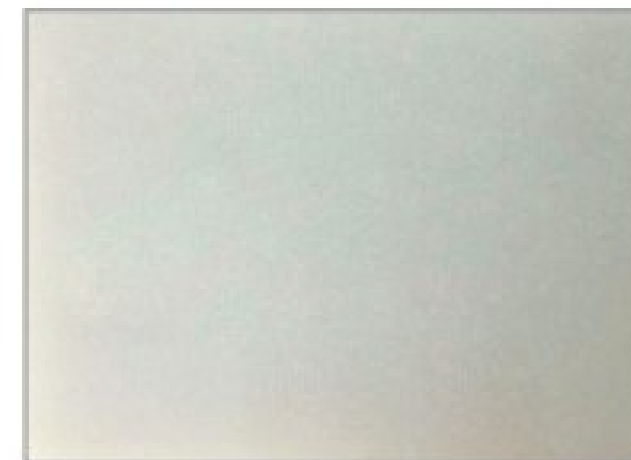
Grey Star
Model: APX1726CA4



Snow White
Model: APX1726HG1



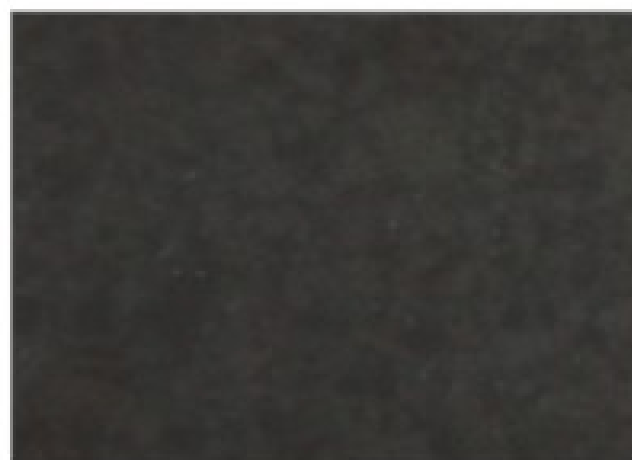
Crystal White
Model: APX1726HH7



Cream Marble
Model: APX1726CA1



Ivory Marble
Model: APX1726CA2



Crystal Black
Model: APX1726BH8



Canvas White
Model: APX1726CA3

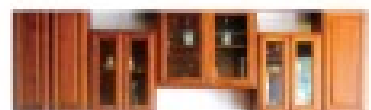
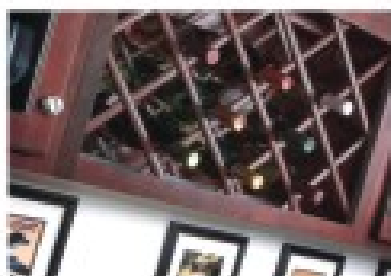




Over the years, the kitchen has morphed into the core of the house for snacking, eating, gathering and talking. Gone are the small, basic kitchens replaced with much larger ones that include many amenities such as islands, multiple sinks, fancy faucets and lighting. Our staff work hard to help to transform your kitchen into a warm, social kitchen -- way in.

www.apexgraniteoutlet.com

Kitchen Cabinets



Construction Type	North American Frame
Finish	Stained with clear coat finish
Door	Semi-full overlay and recessed shaker panel. 3/4" thick wood doors Hinges are concealed.
Drawer	Undermount full extension soft-closing system (depending of style). Matching semi-full overlay wood panel drawer front. Dovetailed construction
Carcass	3/4" plywood with wood veneer on both sides Side panels: 5/8" plywood with knock-down butt joints Top & bottom: 3/4" plywood. Back panel: 1/4" plywood.
Toe Kick	5/8" plywood (unfinished, need to purchase Toe Kick Skin)

Kitchen Cabinets

Kitchen Cabinets



Model: Toffee Glaze
Style: Raised Panel



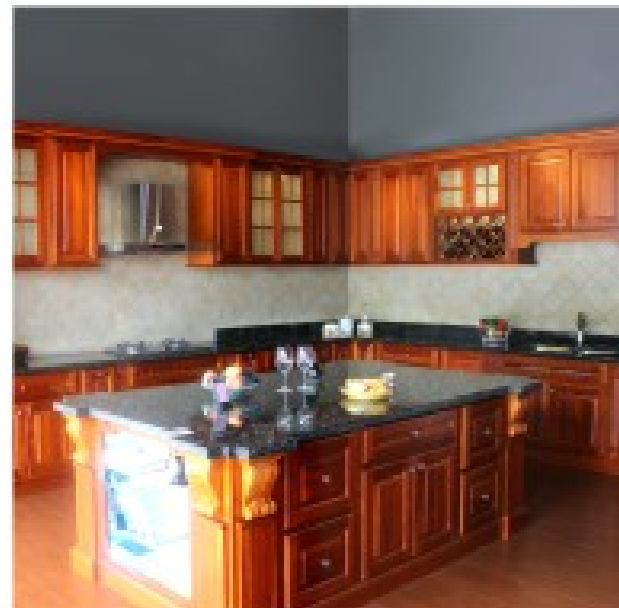
Model: Mocha Maple
Style: Raised Panel



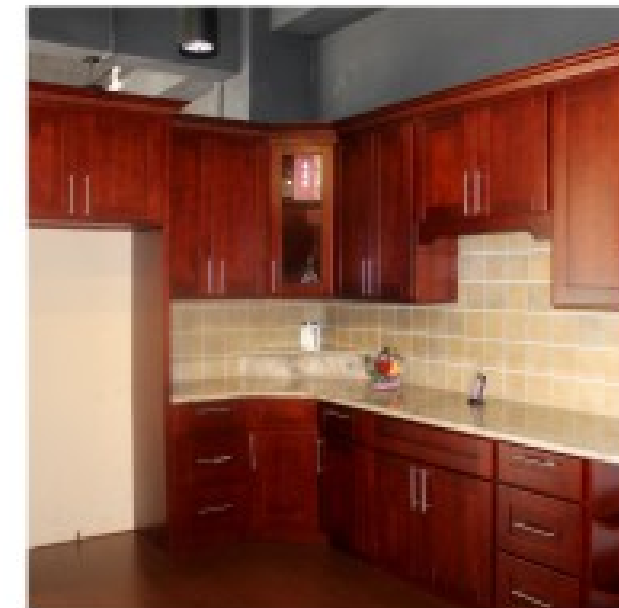
Model: White Shaker
Style: Shaker Panel



Model: Antique White
Style: Raised Panel



Model: Red Cherry
Style: Raised Panel



Model: Cherry Shaker
Style: Shaker Panel



Model: Espresso Shaker
Style: Shaker Style



Frameless



Frameless

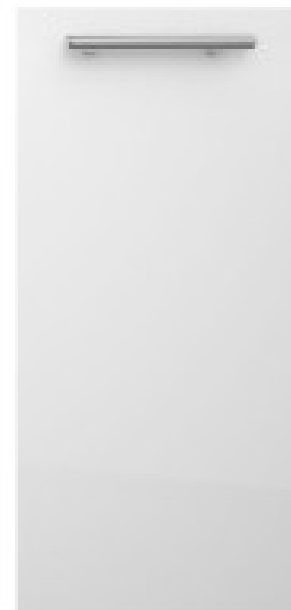
KITCHEN CABINETS

KITCHEN CABINETS

Avanti White EUROPEAN PASSION

Style: Flat Panel
Color: High gloss white
Wood: High gloss acrylic over MDF core

European refined excellence at its best. Offering a High gloss Acrylic flat panel door, Avanti White is simplistic yet sleek at the same time.



Avanti Grey EUROPEAN PASSION

Style: Flat Panel
Color: Medium Gray
Wood: Walnut Veneer over MDF Core

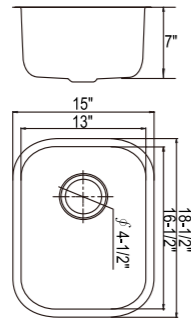
European passion is the best way to define this door style. With a clean smooth soft texture, the medium grey finish gives this style an amazing elegance.



Undermount Sinks

Model:SM1815

Finished: Satin



DESCRIPTION:

Dimension:

Overall Size: 18-1/2" x 15" Bowl Depth: 7" Drain: ϕ 4-1/2"

Construction:

Made with High Quality 304 Type s/s (BEST type of steel for Kitchen Sinks Guaranteed to not rust or stain)
18/10 Chromium / Nickel content
Made with Heavy 18 Gauge Steel (Perfect for Residential and Commercial)
Made from cold-rolled Stainless Steel
Fully Insulated with Stone Guard coating

Included:

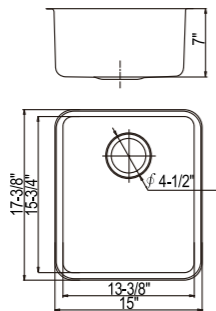
Installation Hardware & Template Included

Optional Accessoreis (Sold Separately):

Strainer and Grids

Model:CD1012

Finished: Satin



DESCRIPTION:

Dimension:

Overall Size: 17-3/8" x 15" Bowl Depth: 7" Drain: ϕ 4-1/2"

Construction:

Made with High Quality 304 Type s/s (BEST type of steel for Kitchen Sinks Guaranteed to not rust or stain)
18/10 Chromium / Nickel content
Made with Heavy 18 Gauge Steel (Perfect for Residential and Commercial)
Made from cold-rolled Stainless Steel
Fully Insulated with Stone Guard coating

Included:

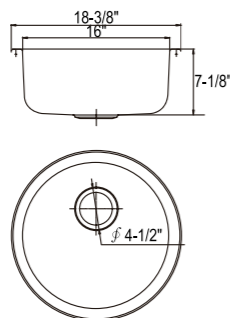
Installation Hardware & Template Included

Optional Accessoreis (Sold Separately):

Strainer and Grids

Model:SM465

Finished: Satin



DESCRIPTION:

Dimension:

Overall Size: 18-3/8" x 16" Bowl Depth: 7-1/8" Drain: ϕ 4-1/2"

Construction:

Made with High Quality 304 Type s/s (BEST type of steel for Kitchen Sinks Guaranteed to not rust or stain)
18/10 Chromium / Nickel content
Made with Heavy 18 Gauge Steel (Perfect for Residential and Commercial)
Made from cold-rolled Stainless Steel
Fully Insulated with Stone Guard coating

Included:

Installation Hardware & Template Included

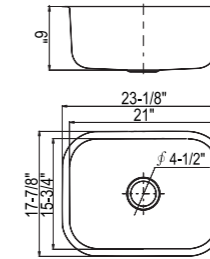
Optional Accessoreis (Sold Separately):

Strainer and Grids

Undermount Sinks

Model:SM2318

Finished: Satin



DESCRIPTION:

Dimension:

Overall" 23-1/8" X 17 - 7/8" Bowl Depth: 9" Drain: ϕ 4- 1/2"

Construction:

Made with High Quality 304 Type s/s (BEST type of steel for Kitchen Sinks Guaranteed to not rust or stain)
18/10 Chromium / Nickel content
Made with Heavy 18 Gauge Steel (Perfect for Residential and Commercial)
Made from cold-rolled Stainless Steel
Fully Insulated with Stone Guard coating

Included:

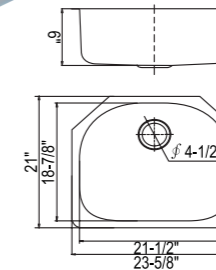
Installation Hardware & Template Included

Optional Accessoreis (Sold Separately):

Strainer and Grids

Model:SM2421

Finished: Satin



DESCRIPTION:

Dimension:

Overall: 23-5/8" x 21" Bowl Depth: 9" Drain: ϕ 4 1/2"

Construction:

Made with High Quality 304 Type s/s (BEST type of steel for Kitchen Sinks Guaranteed to not rust or stain)
18/10 Chrome/nickel content
Long-lasting and easy to clean
Refined brushed finish
Easy to install in Standard 25" countertop
Soundproofed & Undercoated
Rear Strainer Placement
Strainer sold separately

Included:

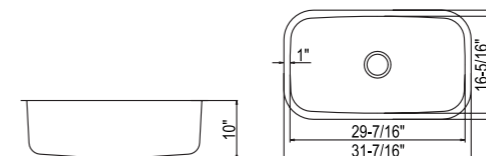
Installation Hardware & Template Included

Optional Accessoreis (Sold Separately):

Strainer and Grids

Model:SM3118

Finished: Satin



DESCRIPTION:

Dimension:

Overall Size: 31-7/16" x18- 3/8" Bowl Depth: 10" Drain: ϕ 4-1/2"

Construction:

Made with High Quality 304 Type s/s (BEST type of steel for Kitchen Sinks Guaranteed to not rust or stain)
18/10 Chromium / Nickel content
Made with Heavy 18 Gauge Steel (Perfect for Residential and Commercial)
Made from cold-rolled Stainless Steel
Fully Insulated with Stone Guard coating

Included:

Installation Hardware & Template Included

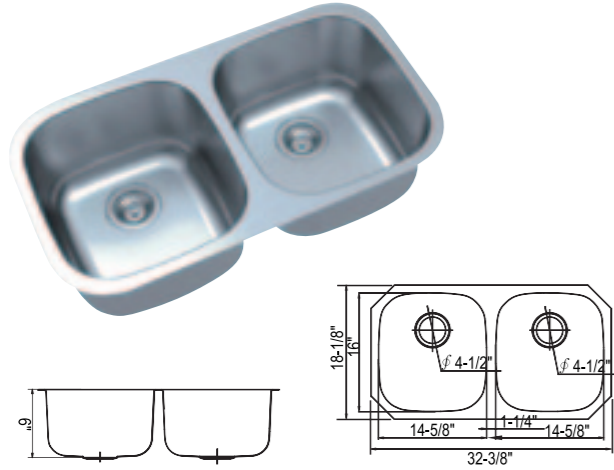
Optional Accessoreis (Sold Separately):

Strainer and Grids

Undermount Sinks

Model:SM502

Finished: Satin



DESCRIPTION:

Dimension:

Overall Size: 32-3/8" Bowl Size: 14-5/8" Bowl Depth: 9" Drain: 4-1/2"

Construction:

Made with High Quality 304 Type s/s (BEST type of steel for Kitchen Sinks Guaranteed to not rust or stain)
18/10 Chromium / Nickel content
Made with Heavy 18 Gauge Steel (Perfect for Residential and Commercial)
Made from cold-rolled Stainless Steel
Fully Insulated with Stone Guard coating

Included:

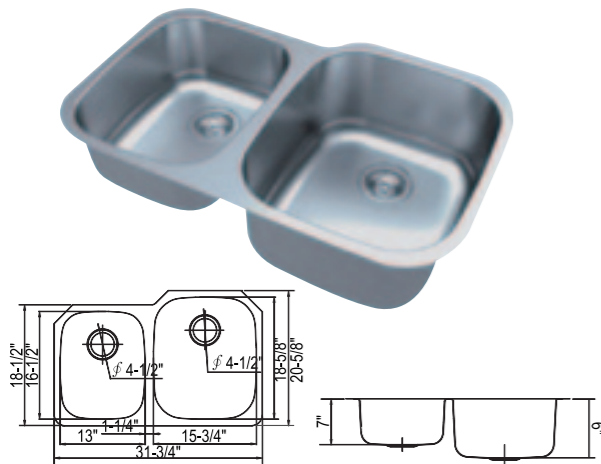
Installation Hardware & Template Included

Optional Accessories (Sold Separately):

Strainer and Grids

Model:SM503L

Finished: Satin



DESCRIPTION:

Dimension:

Overall Size: 31-3/4" x 20-5/8" Bowl Depth: left: 7"/right: 9" Drain: 4-1/2"

Construction:

18 gauge, 304 series stainless steel
18/10 Chrome/Nickel content
Long-lasting and easy to clean
Refined Brushed Finish
Easy to install in standard 25n" countertop
Soundproofed & undercoated
Rear strainer placement

Included:

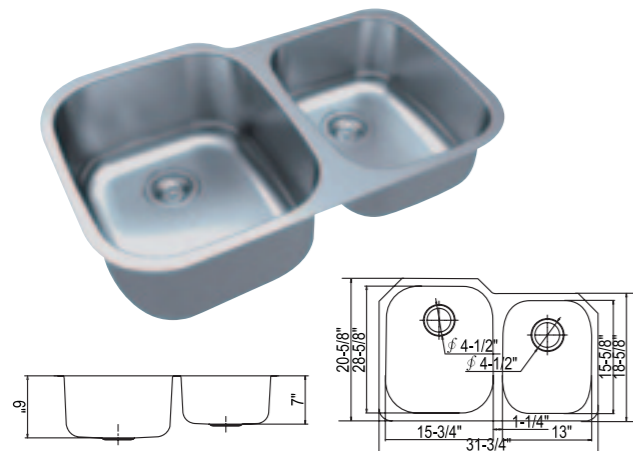
Installation Hardware & Template

Optional Accessories (Sold Separately):

Strainer and Grids

Model:SM503R

Finished: Satin



DESCRIPTION:

Dimension:

Overall Size: 31-3/4" x 20-5/8" Bowl Depth: left: 9"/right: 7" Drain: 4-1/2"

Construction:

Made with High Quality 304 Type s/s (BEST type of steel for Kitchen Sinks Guaranteed to not rust or stain)
18/10 Chromium / Nickel content
Made with Heavy 18 Gauge Steel (Perfect for Residential and Commercial)
Made from cold-rolled Stainless Steel
Fully Insulated with Stone Guard coating

Included:

Installation Hardware & Template

Optional Accessories (Sold Separately):

Strainer and Grids

Undermount Sinks

Model:SM504

Finished: Satin



DESCRIPTION:

Dimension:

Overall: 34-3/4" X20-5/8" Bowl Depth: 9" Drain: 4- 1/2"

Construction:

Made with High Quality 304 Type s/s (BEST type of steel for Kitchen Sinks Guaranteed to not rust or stain)
18/10 Chromium / Nickel content
Made with Heavy 18 Gauge Steel (Perfect for Residential and Commercial)
Made from cold-rolled Stainless Steel
Fully Insulated with Stone Guard coating

Included:

Installation Hardware & Template

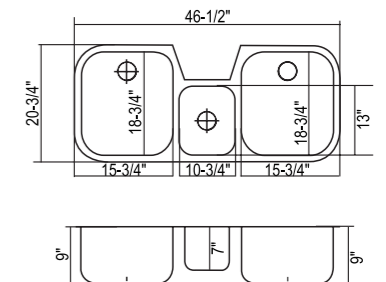
Optional Accessories (Sold Separately):

Strainer and Grids



Model:SM1180C

Finished: Satin



DESCRIPTION:

Dimension:

Overall Size: 46-1/2"x20-3/4" Bowl Depth: Left 9" Center 7" Right 9" Drain: 4-1/2"

Construction:

Made with High Quality 304 Type s/s (BEST type of steel for Kitchen Sinks Guaranteed to not rust or stain)
18/10 Chromium / Nickel content
Made with Heavy 18 Gauge Steel (Perfect for Residential and Commercial)
Made from cold-rolled Stainless Steel
Fully Insulated with Stone Guard coating

Included:

Installation Hardware & Template Included

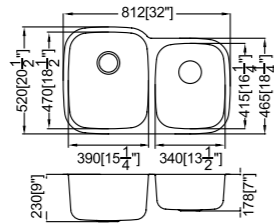
Optional Accessories (Sold Separately):

Strainer and Grids

Undermount Sinks

Model:SM3221L

Finished: Satin



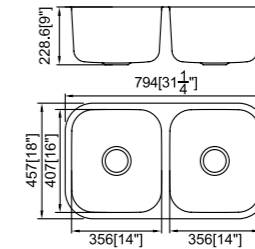
DESCRIPTION:

Sink Size (inch): 29-1/8"x18-1/2"
 Depth (inch): 8"/8"
 Bowl Size (inch): 13"x16-1/2"
 13"x16-1/2"
 Material: 18/8 (304)
 Thickness: 20G (1.0mm) /18G (1.2mm)
 16G (1.5mm)
 Drain Opening: 3-1/2" (89mm)
 Surface Treatment: Satin
 Optional Accessory
 Bottom Grid: BG3342

Undermount Sinks

Model:SM3118A

Finished: Satin

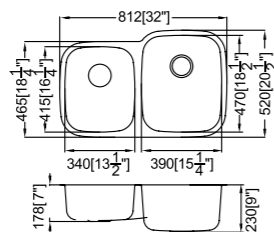


DESCRIPTION:

Sink Size (inch): 31-1/4"x18"
 Depth (inch): 9"/9"
 Bowl Size (inch): 14"x16"
 Material: 18/8 (304)
 Surface Treatment: Satin
 Thickness: 18G (1.2mm) /16G (1.5mm)
 Optional Accessory: Bottom Grid

Model:SM3221R

Finished: Satin

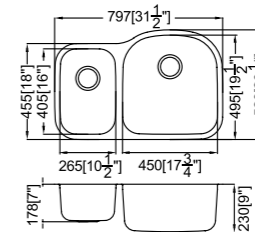


DESCRIPTION:

Sink Size (inch): 29-1/8"x18-1/2"
 Depth (inch): 7"/9"
 Bowl Size (inch): 13"x16-1/2"
 13"x16-1/2"
 Material: 18/8 (304)
 Thickness: 20G (1.0mm) /18G (1.2mm)
 16G (1.5mm)
 Drain Opening: 3-1/2" (89mm)
 Surface Treatment: Satin
 Optional Accessory
 Bottom Grid: BG3342

Model:SM3121R

Finished: Satin

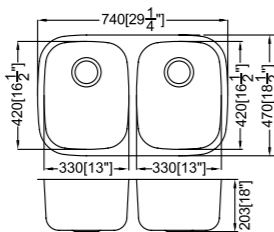


DESCRIPTION:

Sink Size (inch): 31-1/2"x20-5/8"
 Depth (inch): 9"/7"
 Bowl Size (inch): 17-3/4"x18-1/2"
 10-3/8"x16"
 Material: 18/8 (304)
 Thickness: 20G (1.0mm) /18G (1.2mm)
 16G (1.5mm)
 Drain Opening: 3-1/2" (89mm)
 Surface Treatment: Satin
 Optional Accessory
 Bottom Grid: BG4547 For Big Bowl
 Bottom Grid: BG2640 For Small Bowl
 Big bowl in on the left or right optional

Model:SM2919

Finished: Satin

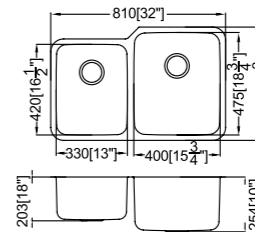


DESCRIPTION:

Sink Size (inch): 29-1/8"x18-1/2"
 Depth (inch): 8"/8"
 Bowl Size (inch): 13"x16-1/2"
 13"x16-1/2"
 Material: 18/8 (304)
 Thickness: 20G (1.0mm) /18G (1.2mm)
 16G (1.5mm)
 Drain Opening: 3-1/2" (89mm)
 Surface Treatment: Satin
 Optional Accessory
 Bottom Grid: BG3342

Model:SM3221CR

Finished: Satin



DESCRIPTION:

Sink Size (inch): 31-7/8"x20-5/8"
 Depth (inch): 10"/8"
 Bowl Size (inch): 15-3/4"x18-3/4"
 13"x16-1/2"
 Material: 18/8 (304)
 Thickness: 18G (1.2mm) /16G (1.5mm)
 Drain Opening: 3-1/2" (89mm)
 Surface Treatment: Satin
 Optional Accessory
 Bottom Grid: BG4047 For Big Bowl
 Bottom Grid: BG3042 For Small Bowl
 Big bowl in on the left or right optional

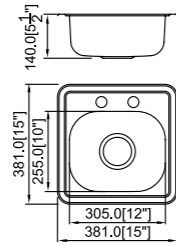
KITCHEN SINKS

KITCHEN SINKS

Top mount Sinks

Model:SM1515

Finished: Satin

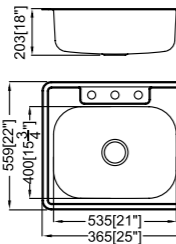


DESCRIPTION:

Sink Size (inch): 15"x15"
 Depth (inch): 5-1/2"/6"
 Bowl Size (inch): 12"x10"
 Material: 18/8 (304) /201
 Thickness: 24G (0.6mm) /22G (0.8mm)
 Drain Opening: 3-1/2" (89mm)
 Surface Treatment: Satin
 Optional Accessory
 Bottom Grid: BG3025

Model:SM2522

Finished: Satin

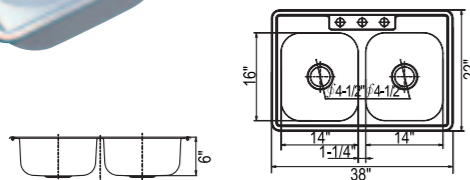


DESCRIPTION:

Sink Size (inch): 25"x22"
 Depth (inch): 6-7/8"
 Bowl Size (inch): 21"x15-3/4"
 Material: 18/8 (304) /201
 Thickness: 24G (0.6mm) /22G (0.8mm)
 20G (1.0mm) /18G (1.2mm)
 Drain Opening: 3-1/2" (89mm)
 Surface Treatment: Satin
 Optional Accessory
 Bottom Grid: BG5340

Model: 3322C(holes:3) 3322D(holes:4)

Finished: Satin



DESCRIPTION:

Dimension:
 Overall: 33"x22" Bowl Depth: 6-7/8"/9" Drain: 4-1/2"

Construction:

Made with High Quality 304 Type s/s
 (BEST type of steel for Kitchen Sinks Guaranteed to not rust or stain)
 18/10 Chromium / Nickel content
 Thickness: 24G (0.6mm) /22G (0.8mm)
 20G (1.0mm) /18G (1.2mm)
 (Perfect for Residential and Commercial)
 Made from cold-rolled Stainless Steel
 Fully Insulated with Stone Guard coating

Included:

Installation Hardware & Template

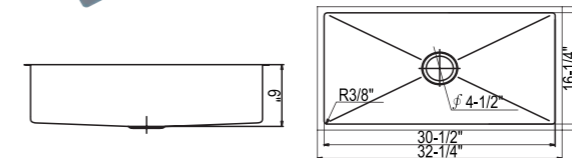
Optional Accessoris (Sold Separately):

Strainer and Grids



Model:CD1076

Finished: Satin



DESCRIPTION:

Dimension:

Overall: 32-1/4" X18" Bowl Depth: 9" Drain: 4-1/2"

Construction:

Made with High Quality 304 Type s/s
 (BEST type of steel for Kitchen Sinks Guaranteed to not rust or stain)
 18/10 Chromium / Nickel content
 Made with Heavy 18 Gauge Steel
 (Perfect for Residential and Commercial)
 Made from cold-rolled Stainless Steel
 Fully Insulated with Stone Guard coating

Included:

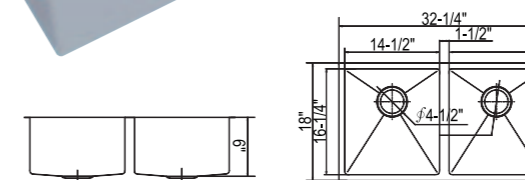
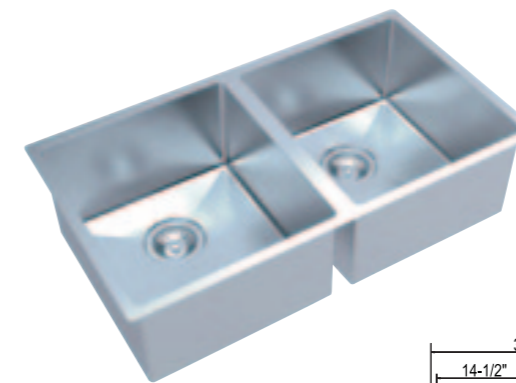
Installation Hardware & Template Included

Optional Accessoris (Sold Separately):

Strainer and Grids

Model:SM2023

Finished: Satin



DESCRIPTION:

Dimension:

Overall: 32-1/4" X18" Bowl Depth: 9" Drain: 4-1/2"

Construction:

Made with High Quality 304 Type s/s
 (BEST type of steel for Kitchen Sinks Guaranteed to not rust or stain)
 18/10 Chromium / Nickel content
 Made with Heavy 18 Gauge Steel
 (Perfect for Residential and Commercial)
 Made from cold-rolled Stainless Steel
 Fully Insulated with Stone Guard coating

Included:

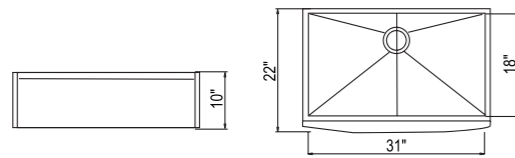
Installation Hardware & Template Included

Optional Accessoris (Sold Separately):

Strainer and Grids (Sink-G-1314)

Model:AP3322C

Finished: Satin



DESCRIPTION:

Dimension:

Overall: 33"x22" Bowl Depth: 10" Drain: 4-1/2"

Construction:

Made with High Quality 304 Type s/s (BEST type of steel for Kitchen Sinks Guaranteed to not rust or stain)
18/10 Chromium / Nickel content
Made with Heavy 18 Gauge Steel (Perfect for Residential and Commercial)
Made from cold-rolled Stainless Steel
Fully Insulated with Stone Guard coating

Included:

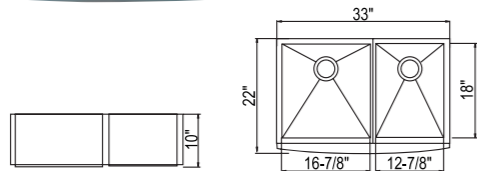
Installation Hardware & Template Included

Optional Accessoreis (Sold Separately):

Strainer and Grids

Model:AP3322BL

Finished: Satin



DESCRIPTION:

Dimension:

Overall: 33"x22" Bowl Depth: 10" Drain: 4-1/2"

Construction:

Made with High Quality 304 Type s/s (BEST type of steel for Kitchen Sinks Guaranteed to not rust or stain)
18/10 Chromium / Nickel content
Made with Heavy 18 Gauge Steel (Perfect for Residential and Commercial)
Made from cold-rolled Stainless Steel
Fully Insulated with Stone Guard coating

Included:

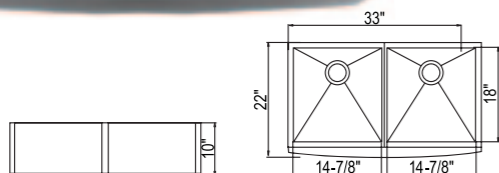
Installation Hardware & Template Included

Optional Accessoreis (Sold Separately):

Strainer and Grids

Model:AP3322

Finished: Satin



DESCRIPTION:

Dimension:

Overall: 33"x22" Bowl Depth: 10" Drain: 4-1/2"

Construction:

Made with High Quality 304 Type s/s (BEST type of steel for Kitchen Sinks Guaranteed to not rust or stain)
18/10 Chromium / Nickel content
Made with Heavy 18 Gauge Steel (Perfect for Residential and Commercial)
Made from cold-rolled Stainless Steel
Fully Insulated with Stone Guard coating

Included:

Installation Hardware & Template Included

Optional Accessoreis (Sold Separately):

Strainer and Grids

Model	Picture	Fits Model	Model	Picture	Fits Model
1P12		SM503	1P21		SM502
1P15		SM2421	1P29		All Sinks
1P26		CD2023	BG309		SM318
1P20		CD1076	11029BN 11029CP		Kitchen Faucets



81001PC
81001BN



81002PC
81002BN



S03



S04



S05



Fasten Accessories

Solid Stainless Steel Kitchen Faucets

DESCRIPTION:

Desc.:
Single handle Pull-out kitchen faucet

Technical Specification:
 \$40mm Ceramic Disc Cartridge
 3/8" Compression SUS 304 Stainless Steel flexible hoses included
 SUS 304 Stainless Steel Handle
 SUS 304 Swivel Spout
 SUS 304 Stainless Steel Pull-Out Spray Head
 Dimension: Overall Height 12-9/32"
 Spout Reach 88-21/32"
 Installed in a single hole or a three hose mount with cover plate(not included)

Model:71200

Finished: Satin



DESCRIPTION:

Desc.:
Single handle deck mount pot filler

Technical Specification:
 \$35mm Ceramic Disc Cartridge
 3/8" Compression SUS 304 Stainless Steel flexible hoses included
 SUS 304 Stainless Steel Handle
 Dimension: Overall Height: 13-15/32"
 Spout height 11-1/32" above counter
 Spout extends up to 13"
 Spout Reach from 6.5" to 13"
 Installed in a single hole or a three hose mount with cover plate(not included)

Model:70400

Finished: Satin



DESCRIPTION:

Desc.:
Single handle kitchen faucet

Technical Specification:
 \$35mm Ceramic Disc Cartridge
 3/8" Compression SUS 304 Stainless Steel flexible hoses included
 SUS 304 Stainless Steel Handle
 Swivel Spout
 Dimension: Overall Height 13-15/32"
 Spout Reach 8-17/32"
 Installed in a single hole or a three hose mount with cover plate(not included)

Model:70200

Finished: Satin



DESCRIPTION:

Desc.:
Single handle kitchen faucet

Technical Specification:
 \$35mm Ceramic Disc Cartridge
 3/8" Compression SUS 304 Stainless Steel flexible hoses included
 SUS 304 Stainless Steel Handle
 Swivel Spout
 Dimension: Overall Height 14-13/16"
 Spout Reach 7-5/16"
 Installed in a single hole or a three hose mount with cover plate(not included)

Model:70100

Finished: Satin



Solid Stainless Steel Kitchen Faucets

DESCRIPTION:

Desc.:
Single handle pull down kitchen faucet

Technical Specification:
 \$40mm Ceramic Disc Cartridge
 3/8" Compression SUS 304 Stainless Steel flexible hoses included
 SUS 304 Stainless Steel Handle
 Swivel Spout and Pull-Down Spray Head
 Two Function Sprayer: Steam and Spray
 Dimension: Overall Height 16-1/4"
 Spout Reach 8-11/16"
 Installed in a single hole or a three hose mount with cover plate(not included)

Model:71300

Finished: Satin



DESCRIPTION:

Desc.:
Single handle kitchen faucet

Technical Specification:
 \$35mm Ceramic Disc Cartridge
 3/8" Compression SUS 304 Stainless Steel flexible hoses included
 SUS 304 Stainless Steel Handle
 Swivel Spout
 Dimension: Overall Height 17-17/32"
 Spout Reach 8-17/32"
 Installed in a single hole or a three hose mount with cover plate(not included)

Model:70500

Finished: Satin



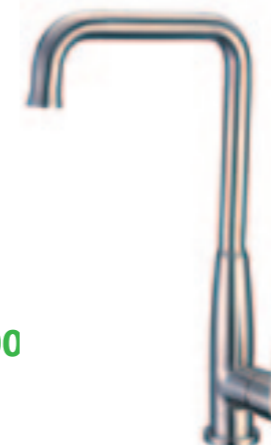
DESCRIPTION:

Desc.:
Single handle kitchen faucet

Technical Specification:
 \$35mm Ceramic Disc Cartridge
 3/8" Compression SUS 304 Stainless Steel flexible hoses included
 SUS 304 Stainless Steel Handle
 Swivel Spout
 Dimension: Overall Height 16-3/16"
 Spout Reach 8-21/32"
 Installed in a single hole or a three hose mount with cover plate(not included)

Model:70600

Finished: Satin



KITCHEN FAUCETS

KITCHEN FAUCETS

Pull-Down Kitchen Faucets



Model:
2070052 BN
2070052 CP

Finish: Brushed Nickel
Chrome

Single Handle Pull-Down Kitchen Faucet

Technical Specification:

• 35mm ceramic disc cartridge
• 3/8"compression stainless steel flexible hoses included
• Zinc alloy handle
• Swivel spout and Pull-Down Spray head
• Dual function spray: steam spray



Dimension: Overall Height 18-3/8"
Spout Reach 8-9/16"

Installed in a single hole or a three hole mount with cover plate(not included)

Pull-Down Kitchen Faucets



Model:
2070189 BN
2070189 CP

Finish: Brushed Nickel
Chrome



Single Handle Pull-Down Kitchen Faucet

Technical Specification:

• 40mm ceramic disc cartridge
• 3/8"compression stainless steel flexible hoses included
• Zinc alloy handle
• Swivel spout and Pull-Down Spray head
• Turnable Dual function spray: steam spray



Dimension: Overall Height 19-1/12"
Spout Reach 8-1/2"

Installed in a single hole or a three hole mount with cover plate(not included)



Model:
2070054 BN
2070054 CP

Finish: Brushed Nickel
Chrome

Single Handle Pull-Down Kitchen Faucet

Technical Specification:

• 35mm ceramic disc cartridge
• 3/8"compression stainless steel flexible hoses included
• Zinc alloy handle
• Swivel spout and Pull-Down Spray head
• Dual function spray: steam spray



Dimension: Overall Height 18-3/8"
Spout Reach 8-9/16"

Installed in a single hole or a three hole mount with cover plate(not included)



Model:
2070444 BN
2070444 CP

Finish: Brushed Nickel
Chrome

Single Handle Pull-Down Kitchen Faucet

Technical Specification:

• 40mm ceramic disc cartridge
• 3/8"compression stainless steel flexible hoses included
• Zinc alloy handle
• Swivel spout and Pull-Down Brass Spray head
• Dual function spray: steam spray



Dimension: Overall Height 16"
Spout Reach 8-1/2"

Installed in a single hole or a three hole mount with cover plate(not included)



Model:
2070190 BN
2070190 CP

Finish: Brushed Nickel
Chrome

Single Handle Pull-Down Kitchen Faucet

Technical Specification:

• 40mm ceramic disc cartridge
• 3/8"compression stainless steel flexible hoses included
• Zinc alloy handle
• Swivel spout and Pull-Down Spray head
• Dual function spray: steam spray



Dimension: Overall Height 19-1/12"
Spout Reach 8-1/2"

Installed in a single hole or a three hole mount with cover plate(not included)

Pull-Down Kitchen Faucets



Model:
2070086 BN
2070086 CP

Finish: Brushed Nickel
Chrome

Single Handle Pull-Down Kitchen Faucet

Technical Specification:

φ40mm ceramic disc cartridge
3/8"compression stainless steel flexible hoses included
Zinc alloy handle
Swivel spout and Pull-Down Spray head
Dual function spray: steam spray



Dimension: Overall Height 17-1/8"
Spout Reach 8-1/2"

Installed in a single hole or a three hole mount with cover plate(not included)

Pull-Down Kitchen Faucets



Model:
2070555 BN
2070555 CP

Finish: Brushed Nickel
Chrome

Single Handle Pull-Down Kitchen Faucet

Technical Specification:

φ40mm ceramic disc cartridge
3/8"compression stainless steel flexible hoses included
Zinc alloy handle
Swivel spout and Pull-Down ABS Spray head
Dual function spray: steam spray



Dimension: Overall Height 16"
Spout Reach 8-1/2"

Installed in a single hole or a three hole mount with cover plate(not included)



Model:
2070087 BN
2070087 CP

Finish: Brushed Nickel
Chrome

Single Handle Pull-Down Kitchen Faucet

Technical Specification:

φ40mm ceramic disc cartridge
3/8"compression stainless steel flexible hoses included
Zinc alloy handle
Swivel spout and Pull-Down Spray head
Dual function spray: steam spray



Dimension: Overall Height 17-1/8"
Spout Reach 8-1/2"

Installed in a single hole or a three hole mount with cover plate(not included)



Model:
2070088 BN
2070088 CP

Finish: Brushed Nickel
Chrome

Single Handle Pull-Down Kitchen Faucet

Technical Specification:

φ40mm ceramic disc cartridge
3/8"compression stainless steel flexible hoses included
Zinc alloy handle
Swivel spout and Pull-Down Spray head
Dual function spray: steam spray



Dimension: Overall Height 15"
Spout Reach 8"

Installed in a single hole or a three hole mount with cover plate(not included)



Model:
2078006 BN
2078006 CP

Finish: Brushed Nickel
Chrome

Single Handle Pull-Down Kitchen Faucet

Technical Specification:

φ35mm ceramic disc cartridge
Quiet running hose with quick connecting structure included
Zinc alloy handle
Swivel spout and Pull-Down Spray head
Dual function spray: steam spray



Dimension: Overall Height 15"
Spout Reach 8-1/2"

Installed in a single hole or a three hole mount with cover plate(Optional)



Pull Out Kitchen Faucets



Model:
2070611 BN
2070611 CP

Finish: Brushed Nickel
Chrome

Single Handle Pull out Kitchen Faucet

Technical Specification:

• 40mm ceramic disc cartridge
• 3/8" compression stainless steel flexible hoses included
• Zinc alloy handle
• Swivel spout and Pull-Down Spray head
• Turnable Dual function spray: steam spray



Dimension: Overall Height 12"
Spout Reach 9-1/2"

Installed in a single hole or a three hole mount with cover plate(not included)

Pull Out Kitchen Faucets



Model:
2070127 BN
2070127 CP

Finish: Brushed Nickel
Chrome

Single Handle Pull out Kitchen Faucet

Technical Specification:

• 40mm ceramic disc cartridge
• 3/8" compression stainless steel flexible hoses included
• Zinc alloy handle
• Swivel spout and Pull-Down Spray head
• Turnable Dual function spray: steam spray



Dimension: Overall Height 6-7/8"
Spout Reach 7-5/8"

Installed in a single hole or a three hole mount with cover plate(not included)



Model:
2070612 BN
2070612 CP

Finish: Brushed Nickel
Chrome

Single Handle Pull out Kitchen Faucet

Technical Specification:

• 35mm ceramic disc cartridge
• 3/8" compression stainless steel flexible hoses included
• Zinc alloy handle
• Swivel spout and Pull-Down Spray head
• Turnable Dual function spray: steam spray



Dimension: Overall Height 12"
Spout Reach 9-1/2"

Installed in a single hole or a three hole mount with cover plate(not included)



Model:
2070403 BN

Finish: Brushed Nickel
Chrome

Single Handle Pull out Kitchen Faucet

Technical Specification:

• 35mm ceramic disc cartridge
• Quiet running hose with quick connecting structure included
• Zinc alloy handle
• Swivel spout and Pull-Down Spray head
• Turnable Dual function spray: steam spray



Dimension: Overall Height 8-3/16"
Spout Reach 9-1/4"

Installed in a single hole or a three hole mount with cover plate(not included)



Model:
2078106 BN

Finish: Brushed Nickel
Chrome

Single Handle Pull out Kitchen Faucet

Technical Specification:

• 35mm ceramic disc cartridge
• Quiet running hose with quick connecting structure included
• Zinc alloy handle
• Swivel spout and Pull-Down Spray head
• Turnable Dual function spray: steam spray



Dimension: Overall Height 8"
Spout Reach 7-5/8"

Installed in a single hole or a three hole mount with cover plate(not included)

Side Sprayer Kitchen Faucets



Model:
2070824 BN
2070824 CP

Finish: Brushed Nickel
Chrome

Single Handle Kitchen Faucet

Technical Specification:

ϕ35mm Ceramic Disc Cartridge
3/8" Compression Stainless Steel flexible hoses included
Swivel spout
External sprayer
Dimension: Overall Height 12-3/4"
Spout Reach 7-3/8"
Installed in a single hole or a three hose mount
with cover plate (not included)



KITCHEN FAUCETS

Side Sprayer Kitchen Faucets



Model:
2070827 BN
2070827 CP

Finish: Brushed Nickel
Chrome

Single Handle Kitchen Faucet w/side spray

Technical Specification:

ϕ35mm Ceramic Disc Cartridge
3/8" Compression Stainless Steel flexible hoses included
Swivel spout
External sprayer
Dimension: Overall Height 12-7/8"
Spout Reach 7-7/8"
Installed in a single hole or a three hose mount
with cover plate(not included)



Model:
2070828 BN
2070828 CP

Finish: Brushed Nickel
Chrome

Single Handle Kitchen Faucet w/side spray

Technical Specification:

ϕ35mm Ceramic Disc Cartridge
3/8" Compression Stainless Steel flexible hoses included
Swivel spout
External sprayer
Dimension: Overall Height 12-5/8"
Spout Reach 7-7/8"
Installed in a single hole or a three hose mount
with cover plate(not included)



Model:
2070826 BN
2070826 CP

Finish: Brushed Nickel
Chrome

Single Handle Kitchen Faucet

Technical Specification:

ϕ35mm Ceramic Disc Cartridge
3/8" Compression Stainless Steel flexible hoses included
Swivel spout
External sprayer
Dimension: Overall Height 8-3/4"
Spout Reach 8-7/8"
Installed in a single hole or a three hose mount
with cover plate (not included)



Model:
2070790 BN
2070790 CP

Finish: Brushed Nickel
Chrome

Single Handle Kitchen Faucet w/side spray

Technical Specification:

ϕ35mm Ceramic Disc Cartridge
3/8" Compression Stainless Steel flexible hoses included
Swivel spout
External sprayer
Dimension: Overall Height 12-7/8"
Spout Reach 7-7/8"
Installed in a single hole or a three hose mount
with cover plate(not included)

KITCHEN FAUCETS



Commercial kitchen faucet

Technical Specification:

Forging brass construction with a solid brass waterway
 \$35mm Ceramic Disc Cartridge
 3/8" Compression Stainless Steel flexible hoses included
 Swivel spout
 Dimension: Overall Height 19-7/8"
 Spout Reach 8"
 Installed in a single hole or a three hose mount with cover plate(not included)


Model:
2070079 BN
2070079 CP

Finish: Brushed Nickel / Chrome



**Commercial Style
Kitchen Faucet**

Technical Specification:

Forging brass construction with a solid brass waterway
 \$35mm Ceramic Disc **joy stick** cartridge
 3/8" Compression Stainless Steel flexible hoses included
 Swivel spout
 Turnable Dual function spray: steam spray

 Dimension: Overall Height 18-13/6"
 Spout Reach 8"
 Installed in a single hole or a three hole mount with cover plate(not included)

Model:
2070080 BN
2070080 CP

Finish: Brushed Nickel / Chrome



**Single Handle
Kitchen Faucet**

Technical Specification:

Forging brass construction with a solid brass waterway
 \$35mm Ceramic Disc Cartridge
 3/8" Compression Stainless Steel flexible hoses included
 Swivel spout
 Dimension: Overall Height 13-1/2"
 Spout Reach 6-1/4"
 Installed in a single hole or a three hose mount with cover plate(not included)

Model:
2070074 BN
2070074 CP

Finish: Brushed Nickel / Chrome



**Single Handle
Kitchen Faucet**

Technical Specification:

Forging brass construction with a solid brass waterway
 \$35mm Ceramic Disc Cartridge
 3/8" Compression Stainless Steel flexible hoses included
 Swivel spout
 Dimension: Overall Height 12-1/2"
 Spout Reach 8"
 Installed in a single hole or a three hose mount with cover plate(not included)

Model:
2070040 BN
2070040 CP

Finish: Brushed Nickel / Chrome



**Single Handle
Kitchen Faucet**

Technical Specification:

\$35mm Ceramic Disc Cartridge
 3/8" Compression Stainless Steel flexible hoses included
 Swivel spout
 Dimension: Overall Height 13-1/2"
 Spout Reach 8-11/16"
 Installed in a single hole or a three hose mount with cover plate(not included)

Model:
2070070 BN
2070070 CP

Finish: Brushed Nickel / Chrome

Traditional Kitchen Faucets



2078101 BN
2078101 CP

Finish: Brushed Nickel / Chrome



2078101S BN
2078101S CP

Finish: Brushed Nickel / Chrome



2078102 BN
2078102 CP

Finish: Brushed Nickel / Chrome



2078102S BN
2078102S CP

Finish: Brushed Nickel / Chrome



2078107S BN
2078107S CP

Finish: Brushed Nickel / Chrome



20782001BN

Finish: Brushed Nickel / Chrome



2070237 CP

Finish: Chrome



2070234 CP

Finish: Chrome



2078268S BN
2078268S CP

Finish: Brushed Nickel / Chrome



2078269S BN
2078269S CP

Finish: Brushed Nickel / Chrome



KITCHEN FAUCETS

Single Handle Lavatory Faucets

Model:
2017001 CP
2017001 BN



Brushed Nickel



Chrome

Single Handle Lavatory Faucet

Technical Specification:

Ø 35mm Ceramic Disc **joy stick** Cartridge
3/8" Compression Stainless Steel flexible hose included
Drain Pop-up Included
Dimension: Overall Height 7-1/4"
Spout Reach 5"
Installed in a single hole or a three hole mount
with cover plate(not included)

Model:
2019001 CP
2019001 BN



Chrome



Brushed Nickel

Single Handle Lavatory Faucet

Technical Specification:

Ø 35mm Ceramic Disc **joy stick** Cartridge
3/8" Compression Stainless Steel flexible hose included
Drain Pop-up Included
Dimension: Overall Height 6"
Spout Reach 5"
Installed in a single hole or a three hole mount
with cover plate(not included)



Single Handle Lavatory Faucets

Model:
2010093 CP
2010093 BN



Brushed Nickel



Chrome

Single Handle Lavatory Faucet

Technical Specification:

Ø 35mm Ceramic Disc **joy stick** Cartridge
3/8" Compression Stainless Steel flexible hose included
Drain Pop-up Included
Dimension: Overall Height 6-5/8"
Spout Reach 4-5/8"
Installed in a single hole or a three hole mount
with cover plate(not included)

Model:
2010094 BN
2010094 CP



Brushed Nickel



Chrome

Single Handle Lavatory Faucet

Technical Specification:

Ø 35mm Ceramic Disc **joy stick** Cartridge
3/8" Compression Stainless Steel flexible hose included
Drain Pop-up Included
Dimension: Overall Height 13-5/8"
Spout Reach 4-7/8"
Installed in a single hole or a three hole mount
with cover plate(not included)

Model:
2010095 CP
2010095 BN



Chrome

Single Handle Lavatory Faucet

Technical Specification:

Ø 35mm Ceramic Disc **joy stick** Cartridge
3/8" Compression Stainless Steel flexible hose included
Drain Pop-up Included
Dimension: Overall Height 6-5/8"
Spout Reach 4-5/8"
Installed in a single hole or a three hole mount
with cover plate(not included)

Model:
2010096 CP
2010096 BN



Chrome

Single Handle Lavatory Faucet

Technical Specification:

Ø 35mm Ceramic Disc **joy stick** Cartridge
3/8" Compression Stainless Steel flexible hoses included
Drain Pop-up Included
Dimension: Overall Height 13-5/8"
Spout Reach 4-7/8"
Installed in a single hole or a three hole mount
with cover plate(not included)

Single Handle Lavatory Faucets

Model:
2010018 CP
2010018 BN



Brushed Nickel



Chrome

Single Handle Lavatory Faucet

Technical Specification:

\$35mm Ceramic Disc Cartridge
 3/8" Compression Stainless Steel flexible hose included
 Drain Pop-up Included
 Dimension: Overall Height 6-3/4"
 Spout Reach 4-7/8"
 Installed in a single hole or a three hole mount with
 cover plate(not included)

High-rise Lavatory Faucets

Model:
2010019 BN
2010019 CP



Chrome



Brushed Nickel

Single Handle High-rise Lavatory Faucet

Technical Specification:

\$35mm Ceramic Disc Cartridge
 3/8" Compression Stainless Steel flexible hose included
 Drain Pop-up Included
 Dimension: Overall Height 13-11/16"
 Spout Reach 5-7/8"
 Installed in a single hole or a three hole mount with
 cover plate(not included)

Model:
2010191 CP
2010191 BN



Brushed Nickel



Chrome

Single Handle Lavatory Faucet

Technical Specification:

\$40mm Ceramic Disc Cartridge
 3/8" Compression Stainless Steel flexible hose included
 Drain Pop-up Included
 Dimension: Overall Height 7-1/4"
 Spout Reach 5-1/4"
 Installed in a single hole or a three hole mount with
 cover plate(not included)

Model:
2010192 BN
2010192 CP



Chrome



Brushed Nickel

Single Handle High-rise Lavatory Faucet

Technical Specification:

\$35mm Ceramic Disc Cartridge
 3/8" Compression Stainless Steel flexible hose included
 Drain Pop-up Included
 Dimension: Overall Height 13-11/16"
 Spout Reach 5-7/8"
 Installed in a single hole or a three hole mount with
 cover plate(not included)

Model:
2010188BN



Brushed Nickel



Chrome

Single Handle Lavatory Faucet

Technical Specification:

\$35mm Ceramic Disc Cartridge
 3/8" Compression Stainless Steel flexible hose included
 Drain Pop-up Included
 Dimension: Overall Height 9-3/4"
 Spout Reach 5-3/16"
 Installed in a single hole or a three hole mount with
 cover plate(not included)

Model:
2010189BN



Chrome



Brushed Nickel

Single Handle Lavatory Faucet

Technical Specification:

\$40mm Ceramic Disc Cartridge
 3/8" Compression Stainless Steel flexible hose included
 Drain Pop-up Included
 Dimension: Overall Height 16-1/16"
 Spout Reach 5-3/16"
 Installed in a single hole or a three hole mount with
 cover plate(not included)

Centerset Lavatory Faucets

Model:
2041001 BN
2041001 CP



Chrome



Brushed Nickel

Single Handle Centerset Lavatory Faucet

Technical Specification:

Single handles 4" center set lavatory faucet
1/3" ceramic disc valve
Drain Pop-Up Included
Dimension: Overall Height 5"
Spout Reach 4-1/2"

Centerset Lavatory Faucets

Model:
2041016 BN
2041016 CP



Chrome



Brushed Nickel

Single Handle Centerset Lavatory Faucet

Technical Specification:

Single handles 4" center set lavatory faucet
1/3" ceramic disc valve
Drain Pop-Up Included
Dimension: Overall Height 5-3/8"
Spout Reach 4-9/16"

Model:
2042186 BN
2042186 CP



Chrome



Brushed Nickel

Two Handle Centerset Lavatory Faucet

Technical Specification:

40mm Ceramic Disc Cartridge
3/8" Compression Stainless Steel flexible hose included
Drain Pop-Up Included
Dimension: Overall Height 7-3/4"
Spout Reach 4-3/8"

Model:
2041023 BN
2041023 CP



Chrome



Brushed Nickel

Two Handle Centerset Lavatory Faucet

Technical Specification:

Two handles 4" center set lavatory faucet
1/2" ceramic disc valve
Drain Pop-Up Included
Dimension: Overall Height 7"
Spout Reach 4-3/8"

Model:
2042189 BN
2042189 CP



Chrome



Brushed Nickel

Two Handle Centerset Lavatory Faucet

Technical Specification:

40mm Ceramic Disc Cartridge
3/8" Compression Stainless Steel flexible hose included
Drain Pop-Up Included
Dimension: Overall Height 7-3/4"
Spout Reach 4-3/8"

Model:
2040001 BN
2040001 CP



Chrome



Brushed Nickel

Two Handle Centerset Lavatory Faucet

Technical Specification:

Two handles 4" center set lavatory faucet
1/2" ceramic disc valve
Drain Pop-Up Included
Dimension: Overall Height 7-1/4"
Spout Reach 4-3/8"

Wide Spread Lavatory Faucets

Model:
2020015BN

Color: Brushed Nickel



Technical Specification:

All major parts including spout, handles, and valves are made of solid brass
3 hole mount installation
1/2" ceramic disc valve
3/8" compression stainless steel flexible hose not included
Dain Pop-UP included
Dimension: Overall Height 6-1/16"
Spout Reach 4"

Model:
2020014 BN
2020014 CP



Technical Specification:

All major parts including spout, handles, and valves are made of solid brass
3 hole mount installation
1/2" ceramic disc valve
3/8" compression stainless steel flexible hose not included
Dain Pop-UP included
Dimension: Overall Height 8-7/16"
Spout Reach 5"

Roman Tub Fillers

Model:
2020152 BN
2020152 CP



Technical Specification:

All major parts including spout, handles, and valves are made of solid brass
3 hole mount installation
1/2" ceramic disc valve
3/8" compression stainless steel flexible hose not included
Dimension: Overall Height 11-3/4"
Spout Reach 7"

Model:
2050121 BN
2050121 CP



Technical Specification:

All major parts including spout, handles, and valves are made of solid brass
3 hole mount installation
1/2" ceramic disc valve
3/8" compression stainless steel flexible hose not included
Dimension: Overall Height 11-3/4"
Spout Reach 7"

Tub & Showers

Faucets



20901 CP
20901 BN



20902 BN
20902 CP

Technical Specification:

Finish: Brushed Nickel / Chrome
Single handle control of hot and water
φ40mm Ceramic Disc Cartridge
Sinle function shower head
100% brass shower arm for durability
Solid forging brass valve body
pressure Balance/mixing valve with Temperature check stop
2.5GPM at 80 PSI shower head performance
2.4GPM at 20 PSI tub filler performance
Diverter on spout

Technical Specification:

Finish: Brushed Nickel / Chrome
Single handle control of hot and water
φ40mm Ceramic Disc Cartridge
7- function shower head
100% brass shower arm for durability
Solid forging brass valve body
pressure Balance/mixing valve with Temperature check stop
2.5GPM at 80 PSI shower head performance
2.4GPM at 20 PSI tub filler performance
Diverter on spout



TUB & SHOWER

LAVATORY FAUCETS



Model:UM1714

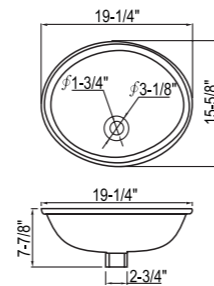
Color: White

Desc
Oval Under Mount Sink

Available Finishes
White And Biscuit

Overall
19-1/4"x15-5/8"

Bowl Depth
7-7/8"



Model:UM2254

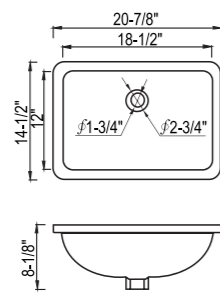
Color: White

Desc
Rectangle Under Mount Sink

Available Finishes
White And Biscuit

Overall
20-7/8"x14-1/2"

Bowl Depth
8-1/8"



Model:RD1717

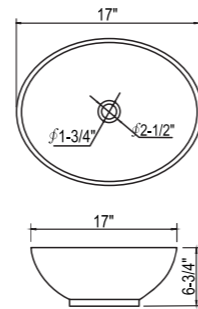
Color: White

Desc
Round Vessel

Available Finishes
White

Overall
17"

Bowl Depth
6-3/4"



Model:SP2315

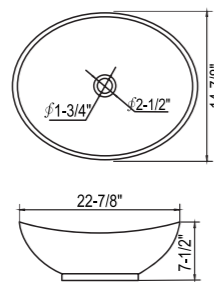
Color: White

Desc
Oval Vessel

Available Finishes
White

Overall
22-7/8"x14-7/8"

Bowl Depth
7-1/2"



Model:OV2017

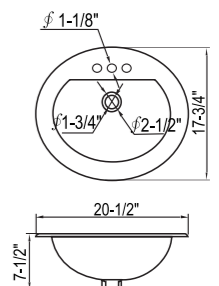
Color: White

Desc
Oval Top Mount Sink

Available Finishes
White And Biscuit

Overall
20-1/2"x17-3/4"

Bowl Depth
7-1/2"



Model:SQ2118

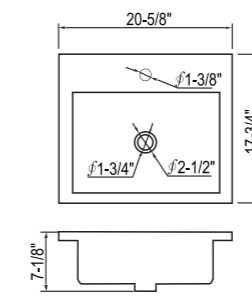
Color: White

Desc
Rectangle Under Top Sink

Available Finishes
White

Overall
20-5/8"x17-3/4"

Bowl Depth
7-1/8"



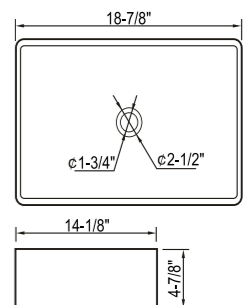
Model:SQ1915

Color: White

Desc
Rectangle Vessel

Overall
18-7/8"x17-3/4"

Bowl Depth
4-7/8"



Model:SQ2218

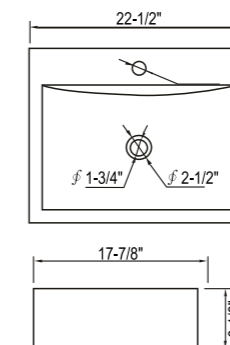
Color: White

Desc
Rectangle Vessel

Available Finishes
White And Biscuit

Overall
22-1/2"x17-7/8"

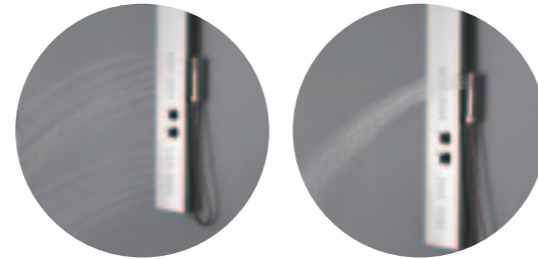
Bowl Depth
8-1/8"



PORCELAIN

PORCELAIN

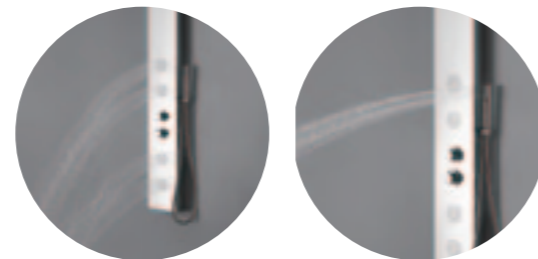
Shower Panels



Model: G79-1

Technical Specification:

- Dimension: 59" x 8-5/8"
- Stainless Steel (#304 in a polished finish)
- Built-In shower head
- Built-In massage body jets
- Square hand shower
- Single zone function
- Pressure Balance Valve
- 1.5m flexible reinforced stainless steel hoses
- "CUPC approved
- S.S. braided hose CUPC approved
- Standard 1/2" water inlets



Model: G79-2

Technical Specification:

- Dimension: 59" x 8-5/8"
- Stainless Steel (#304 in a polished finish)
- Built-In shower head
- Built-In massage body jets
- Round hand shower
- Single zone function
- Pressure Balance Valve
- 1.5m flexible reinforced stainless steel hoses
- "CUPC approved
- S.S. braided hose CUPC approved
- Standard 1/2" water inlets

Shower Panels



Model: G180

Technical Specification:

- Dimension: 59" x 7"
- Brushed Stainless Steel (#304)
- Stainless Steel (Chrome Plated)
- Square Head Shower (7")
- Square **Brass** hand shower
- multi zone functions
- Four **Brass** massage body jets (Chrome Plated) - adjustable
- Pressure Balance Valve - 1.5 stainless steel hose
- "CUPC approved
- Stainless Steel braided hose "CUPC approved
- Standard 1/2" water inlets



Model: G181

Technical Specification:

- Dimension: 65" x 8 5/8"
- Brushed Stainless Steel (#304)
- Built-In Cascade and Rain Shower
- Six Brass Square massage body jets"(Chrome Plated) - adjustable
- Round Stainless Steel hand shower
- Multi zone functions
- Pressure Balance Valve
- Stainless Steel braided hose "CUPC approved
- 1.5m flexible reinforced stainless steel hoses "CUPC approved
- Standard 1/2" water inlets



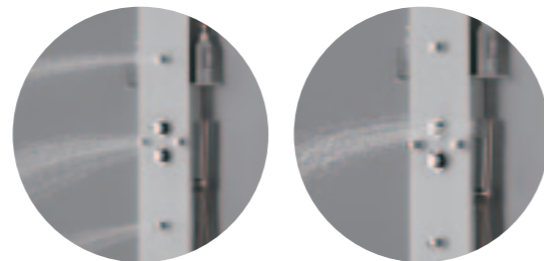
Shower Panels



Model: B145-2

Technical Specification:

Dimension: 59" x 10"
 White tempered glass"(6mm thickness)
 Stainless Steel (#304) body
Ultra thin Stainless Steel Round top shower head
 4 Plastic massage body jets (Chrome Plated)
 - adjustable
 Chrome plated Stainless Steel Round hand shower
Brass Bottom Spout
 Single zone function
 Pressure Balance Valve
 1.5m flexible reinforced stainless"steel
 hose cUPC approved
 Standard 1/2" water inlets



Model: B145-3

Technical Specification:

Dimension: 59" x 10"
 White tempered glass"(6mm thickness)
 Stainless Steel (#304) body
Ultra thin Stainless Steel Round top shower head
 4 Plastic massage body jets (Chrome Plated)
 - adjustable
 Chrome plated Stainless Steel Round hand shower
 Single zone function
 Pressure Balance Valve
 1.5m flexible reinforced stainless"steel
 hose cUPC approved
 Standard 1/2" water inlets

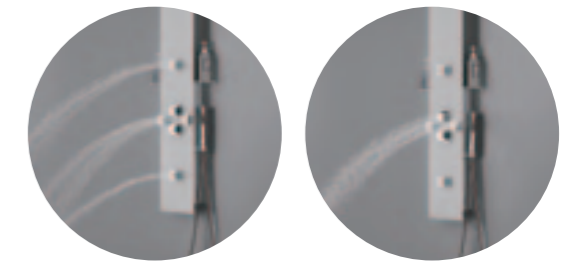
Shower Panels



Model: B146-1

Technical Specification:

Dimension: 59" x 10"
 White tempered glass"(6mm thickness)
 Stainless Steel (#304) body
Ultra thin Stainless Steel Square top shower head
 4 **Square Brass** massage body jets (Chrome Plated)
 - adjustable
 Chrome plated Stainless Steel Square hand shower
Brass Bottom Spout
 Single zone function
 Pressure Balance Valve
 1.5m flexible reinforced stainless"steel
 hose cUPC approved
 Standard 1/2" water inlets



Model: B146-2

Technical Specification:

Dimension: 59" x 10"
 White tempered glass"(6mm thickness)
 Stainless Steel (#304) body
Ultra thin Stainless Steel Square top shower head
 4 **Square Brass** massage body jets (Chrome Plated)
 - adjustable
 Chrome plated Stainless Steel Square hand shower
 Single zone function
 Pressure Balance Valve
 1.5m flexible reinforced stainless"steel
 hose cUPC approved
 Standard 1/2" water inlets

Shower Panels



Shower Head Body Jet Hand Shower

Model: B113-1

Technical Specification:

Dimension: 59" x 10"
 White tempered glass(6mm thickness)
 Stainless Steel (#304) body
 Square top shower head
 6 **Square Brass** massage body jets
 (Chrome Plated) - adjustable
 Chrome plated hand shower
 Square hand shower
 Single zone function
 Pressure Balance Valve
 1.5m flexible reinforced stainless"steel
 hose cUPC approved
 Standard 1/2" water inlets

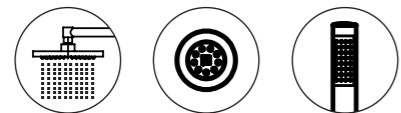


Shower Head Body Jet Hand Shower

Model: B146-2

Technical Specification:

Dimension: 59" x 10"
 White tempered glass(6mm thickness)
 Stainless Steel (#304) body
 Square top shower head
 6 Plastic massage body jets
 Chrome plated hand shower
 Square shower wand
 Single zone function
 Pressure Balance Valve
 1.5m flexible reinforced stainless"steel
 hose cUPC approved
 Standard 1/2" water inlets

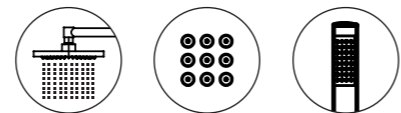


Shower Head Body Jet Hand Shower

Model: B117-1

Technical Specification:

Dimension: 59" x 10"
 White tempered glass(6mm thickness)
 Stainless Steel (#304) body
 Round top shower head
 6 Plastic massage body jets (Chrome
 Plated) - adjustable
 Chrome plated hand shower
 Round hand shower
 Single zone function
 Pressure Balance Valve
 1.5m flexible reinforced stainless"steel
 hose cUPC approved
 Standard 1/2" water inlets



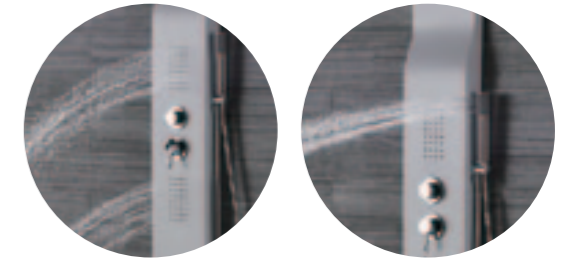
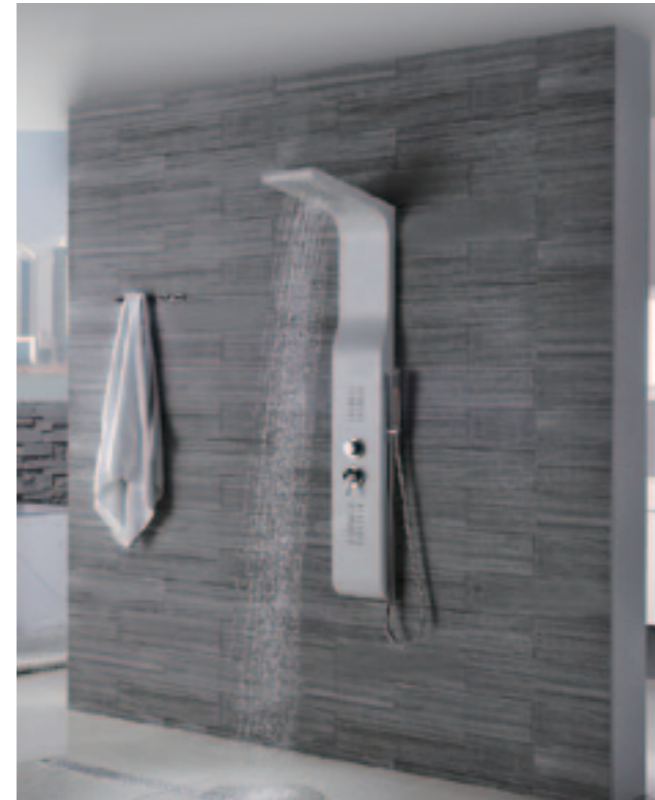
Shower Head Body Jet Hand Shower

Model: B157

Technical Specification:

Dimension: 59" x 10"
 White tempered glass(6mm thickness)
 over PVC body
 Round top shower head
 Built-In massage body jets
 Chrome plated hand shower
 Round hand shower
 Single zone function
 Pressure Balance Valve
 1.5m flexible reinforced stainless"steel
 hose cUPC approved
 Standard 1/2" water inlets

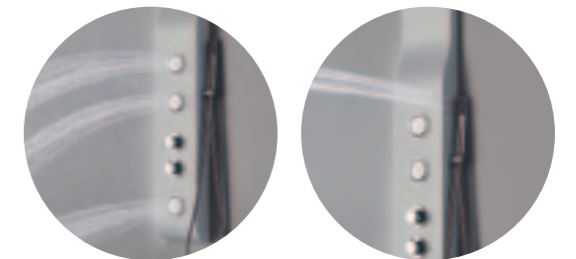
Shower Panels



Model: GS94-1

Technical Specification:

Dimension: 59" x 10"
 ABS body
 Built-In Shower Head
 Built-In massage body jets
 Chrome plated hand shower
 Round hand shower
 Single zone function
 Pressure Balance Valve
 1.5m flexible reinforced stainless"steel
 hose cUPC approved
 Standard 1/2" water inlets



Model: GS94-4

Technical Specification:

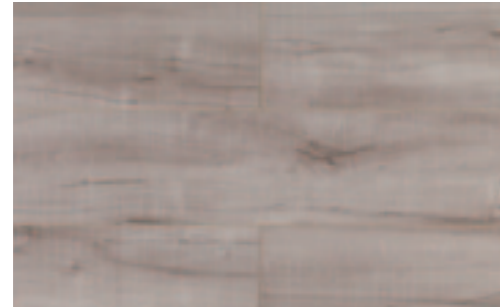
Dimension: 59" x 10"
 ABS body
 Built-In Shower Head
 3 Plastic massage body jets (Chrome
 Plated) - adjustable
 Chrome plated hand shower
 Round hand shower
 Single zone function
 Pressure Balance Valve
 1.5m flexible reinforced stainless"steel
 hose cUPC approved
 Standard 1/2" water inlets

SHOWER PANELS

SHOWER PANELS

Flooring
Laminated

Flooring
Laminated



APXA040 - 12mm



APXG67 - 12mm



BLKC011 - 12mm



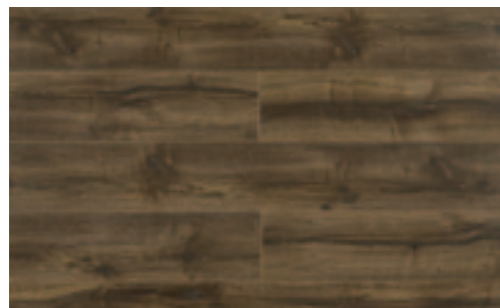
APXA030 - 12mm



APXG61 - 12mm



APXH61 - 12mm



BLKC020 - 12mm



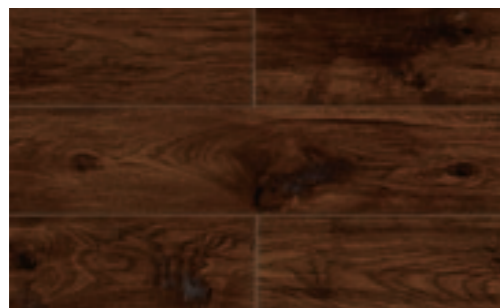
APXH63 - 12mm



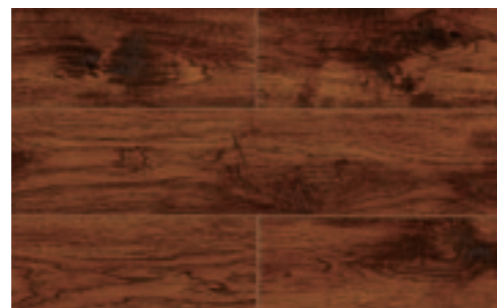
APXA028 - 12mm



APXH92 - 12mm



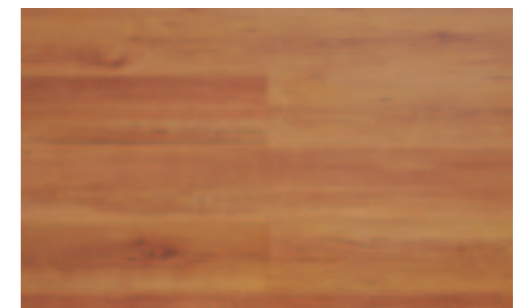
BLKC02C - 12mm



BLKC02B - 12mm



APXLF005 - 12mm



APXG51 - 12mm

Usage: AC3 Residential/Commercial use
Finished: Aluminum Oxide (Increases scratch resistance)

Core: High Density Fiberboard Core
T&G Type: Glueless Unilin locking tongue & groove construction

Edge Design: 4 sided micro-bevel edge
No wax, low maintenance, easy sweep surface.

Construction: Acrylic melamine impregnated core
Warranty: 25 years wear, 25 years stain, 25 years fade

FLOORING

FLOORING

Vertical Angle Grab Bar

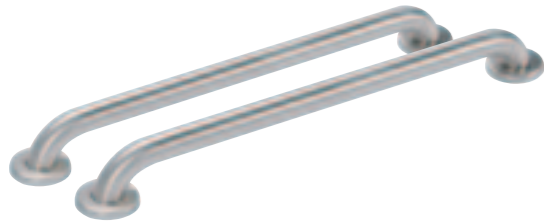


DESCRIPTION:

- For Left or Right Handed Installations.
- 20" x 20".
- 18 Gauge (.049) Tubing.
- Heavy Duty 304 Stainless Steel.
- Complies with the Americans with Disabilities Act when properly installed, sized, and located. Includes the following:
- (3) 3" Stainless Steel Flange Covers.
- (9) 2" Stainless Steel Screws.

Our 1-1/2" Stainless Steel Universal Corner Grab Bars provide a durable, long lasting, low cost solution to bathroom safety.

Straight Grab Bar



DESCRIPTION:

- Complies with the Americans with Disabilities Act when properly installed, sized, and located.
- 18 Gauge (.049) Tubing.
- Heavy Duty 304 Stainless Steel.
- Flange Covers are 14 Gauge 304 Stainless Steel. Includes the following:
- (2) 3" Stainless Steel Flange Covers.
- (6) 2" Stainless Steel Screws.

Our 1-1/2" ADA compliant Stainless Steel Grab Bars provide a durable, long lasting, low cost solution to bathroom safety.

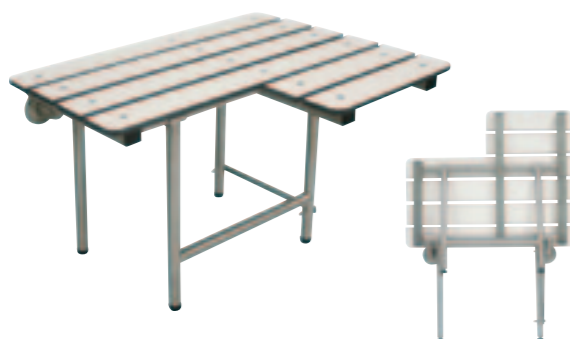
Folding Seat



DESCRIPTION:

- Can be raised and lowered with less than 5 pounds of force
- Swing-down legs are made of Stainless Steel, making them stable and rust resistant
- When installed correctly (two studs or other blocking material in the wall), the unit can hold a static load of 400lbs
- Great seat for disabled baths or handicapped showers, these seats can also be used as shower chairs for elderly people

L-Shape Folding Seat



DESCRIPTION:

- The seat meets ADA transfer requirements.
- Can be raised and lowered with less than 5lbs of force.
- Positive friction between the yolk and the bracket allow the seat to remain securely in the raised position.
- The wall bracket and supporting yolk are included and already assembled onto the unit.
- When installed correctly (two studs or other blocking material in the wall), the unit can hold a static load of 400lbs.
- Great seat for disabled baths or handicapped showers, these seats can also be used as shower chairs for elderly people.
- Our L-shape shower seat is available in either a left side L or a right side L shaped seat.
- Left or right is determined from the sitting position, example if when sitting on the seat the long side is on your right you would order the right side.

Wave Grab Bar



DESCRIPTION:

- Available in 3 Lengths.
- Available in either High Luster Polished or Brushed Finish.
- Complies with the Americans with Disabilities Act when properly installed, sized, and located.
- 1-1/4" Diameter.
- High Quality 18 Gauge Stainless Steel. Includes the following:
- (2) 3" Flange Covers.
- (6) 2" Stainless Steel Screws.

Architectural Straight Grab Bar



DESCRIPTION:

- Complies with the Americans with Disabilities Act when properly installed, sized, and located.
- 1-1/4" Diameter.
- High Quality 18 Gauge Stainless Steel.
- Available in 3 Lengths; 16", 24", 36"
- Available in either High Luster Polished or Brushed Finish. Includes the following:
- (2) 3" Flange Covers.
- (6) 2" Stainless Steel Screws.

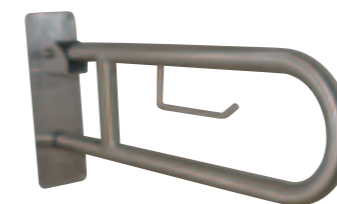
Infinity Straight Grab Bar



DESCRIPTION:

- Complies with the Americans with Disabilities Act when properly installed, sized, and located.
- 1-1/4" Diameter
- High Quality 18 Gauge Stainless Steel
- Available in 3 Lengths; 16", 24", 36"
- Available in either High Luster Polished or Brushed Finish. Includes the following:
- Includes (2) 3" Flange Covers
- Includes (6) 2" Stainless Steel Screws

Flip-Up Grab Bar With Toilet Paper Holder



DESCRIPTION:

- Flips Up for Easy Access
- 30" Length
- Mounting Plate is 11" x 3.25"
- Satin Finish
- For Right or Left Handed Installation
- 18 Gauge (.049) Tubing
- Heavy Duty 304 Stainless Steel
- Features a Built in Toilet Paper Holder. Includes the following:
- (6) 2" Stainless Steel Screws