

CERTIFICATE OF ANALYSIS

PRODUCT NAME: Certified Organic Joy Organics CBD FS Tincture - Key Lime
PRODUCT STRENGTH: 4472'0 i "Tdqvwg
TINCTURE BATCH: 43445D
BEST BY DATE: 2: B34245
HEMP EXTRACT LOT: EQ825/223

Click on the links to view third-party reports

Physical Attributes


Test	Method	Specification	Results
Color	Joy Internal	Golden to Amber	PASS
Odor	Joy Internal	Characteristic - Coconut and Hemp, Lime	PASS
Appearance	Joy Internal	Golden to Amber oil in brown glass bottle with dropper.	PASS
Primary Package Eval.	Joy Internal	Container clean and free of filth. Container caps tight and shrink bands intact	PASS
Secondary Package Eval.	Joy Internal	Labeling Compliance Checked, Cartons sturdy and clean. Sufficient cushion material exists. Box taped and secure.	PASS

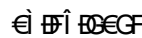
Review of Third-Party Analysis

Panel	Method	Specification	Results*	Pass/Fail
Potency - Total CBD	HPLC-UV DAD	*NLT (product strength) mg / bottle	& \$\$\$- 'a [PASS
Potency - D9-THC	HPLC-UV DAD	LOQ: 10 ppm (.001-0.3%)	\$"&\$i	PASS
Expanded Pesticide Panel	HPLC-QQQ	LOQ: Complies with CDPHE 6 CCR 1010-21 Industrial Hemp Extract	Below LOQ	PASS
Microbial Escherichia coli (STEC)	PCR	Complies with CDPHE 6 CCR 1010-21 - LOQ 1 CFU/25 gram	Absent	PASS
Microbial Salmonella	PCR	Complies with CDPHE 6 CCR 1010-21 - LOQ 1 CFU/25 gram	Absent	PASS
Microbial Yeast and Mold	Culture Plating	Complies with CDPHE 6 CCR 1010-21 - LOQ 10 ² CFU/gram	Below LOQ	PASS
Microbial Total Coliforms*	Culture Plating	Complies with CDPHE 6 CCR 1010-21 - LOQ 10 ² CFU/gram	Below LOQ	PASS
Microbial Total Aerobic Count*	Culture Plating	Complies with CDPHE 6 CCR 1010-21 - LOQ 10 ³ CFU/gram	Below LOQ	PASS
Heavy Metals Panel	ICP-MS	Arsenic (As): ≤1.5 ppm Cadmium (Cd): ≤0.5 ppm Lead (Pb): ≤0.5 ppm Mercury (Hg): ≤1.5 ppm	Below LOQ	PASS
Mycotoxins	ICP-MS	Total Aflatoxins <20 ppb† Afltoxin B1 < 5 ppb Ochratoxin < 5ppb	Below LOQ	PASS
Residual Solvents	GC-HS-MSD	LOQ: Complies with CDPHE 6 CCR 1010-21 Industrial Hemp Extract	Below LOQ	PASS

* Level of Quantitation, † Parts Per Million ‡ Part Per Billion CFU/g=Colony Forming Units per Gram
 *nothing Less Than
 10²=100 CFU
 10³=1,000 CFU

Quality Certified


 Kayla Kolber
 Quality Assurance Technician



Date



C0603-001

7USC1639 Certificate of Analysis

sample ID 26937
source ID 1Z78V4E80193991698

certificate ID 1FC155

total cannabinoids 2552.4mg per 30mL
THC‡ 61.6mg CBD‡ 2300.9m terpenes

This Product Has Been Tested and Complies with 7USC1639o(1)

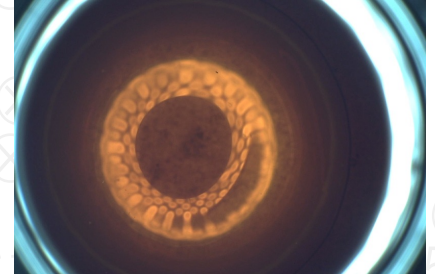
Stillwater Laboratories

order 10938
analysis date 6/4/2021 12:31:29 PM
test tag 10938.1.2
sample wgt

Inspection MSP-7.5.1.2

DESCRIPTION: Concentrate sample received in a client-labeled bottle, by commercial courier. Labeled 26937 and sample tag 10938.1.2.

- caryophyllene
humulene
terpinolene
ocimene
beta pinene
alpha pinene
limonene
myrcene
linalool



infused

Potency per 30mL

Table with columns: Potency per 30mL, MSP-7.5.1.4, LOD, LOQ, error (95%CI k=2). Rows include total CBD, THC, and various cannabinoids.

Terpenes

MSP-7.5.1.6 MSP-7.5.1.6

Microbial

Table with columns: Microbial, MSP-7.5.1.10, limit. Rows include E.coli, Salmonella sp., molds, Ochratoxin A, and Aflatoxin.

Metals

Table with columns: Metals, MSP-7.5.1.11, limit. Rows include Arsenic, Cadmium, Lead, and Mercury.

Pesticides

Table with columns: Pesticides, MSP-7.5.1.8, limit. Rows include Abamectin, Acephate, Acequinocyl, Acetamiprid, Aldicarb, Azoxystrobin, Bifenazate, Bifenthrin, Boscalid, Carbaryl, Carbofuran, Chloanthraniliprole, Chlorfenapyr, Chlorpyrifos, Clofentezine, Coumaphos, Cyfluthrin, Cypermethrin, Daminozide, Dichlorvos, Diazinon, Dimethoate, Etoxazole, Fenoxycarb, Fenpyroximate.

Pesticides

Table with columns: Pesticides, MSP-7.5.1.8, limit. Rows include Fipronil, Flonicamid, Fludioxonil, Hexythiazox, Imazalil, Imidacloprid, Malathion, Metalaxyl, Methiocarb, Methomyl, Methyl parathion, Mevinphos, Myclobutanil, Naled, Oxamyl, Paclbutrazol, and Permethrin.

Solvents

Table with columns: Solvents, MSP-7.5.1.7, limit. Rows include Acetone, Acetonitrile, Benzene, Butane, Chloroform, Cyclohexane, Ethanol, Heptane, Hexane, Isopropyl alcohol, Methanol, Pentane, Propane, Toluene, and Xylenes.

Pesticides

Table with columns: Pesticides, MSP-7.5.1.8, limit. Rows include Permethrin, Phosmet, Piperonylbutoxide, Prallethrin, Propiconazole, Propoxur, Pyrethrin, Pyridaben, Spinetoram, Spinosad, Spiromesifen, Spirotetramat, Spiroxamine, Tebuconazole, Thiacloprid, Thiamethoxam, and Trifloxystrobin.

INSTRUMENTS
potency: HPLC (LC2030C-UV)
terpenes: GCMS (QP2020/HS20)
solvents: GCMS (QP2020/HS20)
pesticides: LCMSMS (LC8060)
mycotoxins: LCMSMS (LC8060)
microbial: qPCR (AriaMx) and plating
metals: ICPMS (ICPMS-2030)

SECURITY FEATURE: WATERMARK MUST MATCH CERTIFICATE ID AND ISSUE DATE

Certified by:

Signature of Stillwater Laboratories Inc.

Stillwater Laboratories Inc.
MT License L00001, 7, 8
6073 US93N Suite 5
Olney MT 59927
406-881-2019

The data in this report is the property of and is administered by Stillwater Labs. The format, layout, and security features of this report are copyrighted by Stillwater Laboratories Inc. © 2020



Printed
6/7/2021 1:46 PM

https://customer.a2la.org/index.cfm?event=directory_detail
&labPID=423635B2-5128-4C6F-871A-419DCF43B0D7

OFTKL2250

Batch ID or Lot Number: 21223B	Test: Microbial Contaminants	Reported: 8/16/21
--	--	-----------------------------

Matrix: Concentrate	Test ID: T000157038	Started: 8/12/21	USDA License: N/A
------------------------	------------------------	---------------------	----------------------

Status: N/A	Methods: TM25 (qPCR) TM24, TM26, TM27(Culture Plating): Microbial (Colorado Panel)	Received: 08/12/2021 @ 10:35 AM	Sampler ID: N/A
----------------	---	------------------------------------	--------------------

MICROBIAL CONTAMINANTS DETERMINATION

Contaminant	Method	LOD	LLOQ	ULOQ	Result	Notes
Total Aerobic Count*	TM-26, Culture Plating	10 ² CFU/g	10 ³ CFU/g	1.5x10 ⁵ CFU/g	None Detected	Free from visual mold, mildew, and foreign matter
Total Coliforms*	TM-27, Culture Plating	10 ² CFU/g	10 ² CFU/g	1.5x10 ⁴ CFU/g	None Detected	
Total Yeast and Mold*	TM-24, Culture Plating	10 ² CFU/g	10 ² CFU/g	1.5x10 ⁴ CFU/g	None Detected	
E. coli (STEC)	TM-25, PCR	1 CFU/25 g	NA	NA	Absent	
Salmonella	TM-25, PCR	1 CFU/25 g	NA	NA	Absent	

Jackson Osaghae-Nosa
 Jackson Osaghae-Nosa
 8/16/2021
 10:35:00 AM

Brianne Maillot
 Brianne Maillot
 8/16/2021
 1:59:00 PM

PREPARED BY / DATE

APPROVED BY / DATE

Definitions

LOD = Limit of Detection | LLOQ = Lower Limit of Quantitation | ULOQ = Upper Limit of Quantitation

 CFU/g = Colony Forming Units per Gram | STEC = Shiga Toxin-Producing *E. coli*

* Values recorded in scientific notation, a common microbial practice of expressing numbers that are too large to be conveniently written in decimal form.

Examples:
 10² = 100 CFU
 10³ = 1,000 CFU
 10⁴ = 10,000 CFU
 10⁵ = 100,000 CFU

Testing results are based solely upon the sample submitted to Botanacor Laboratories, LLC, in the condition it was received. Botanacor Laboratories, LLC warrants that all analytical work is conducted professionally in accordance with all applicable standard laboratory practices using validated methods. Data was generated using an unbroken chain of comparison to NIST traceable Reference Standards and Certified Reference Materials. This report may not be reproduced, except in full, without the written approval of Botanacor Laboratories, LLC.



CDPHE Certified



Certificate #4329.02