

# GEYSERWORX®



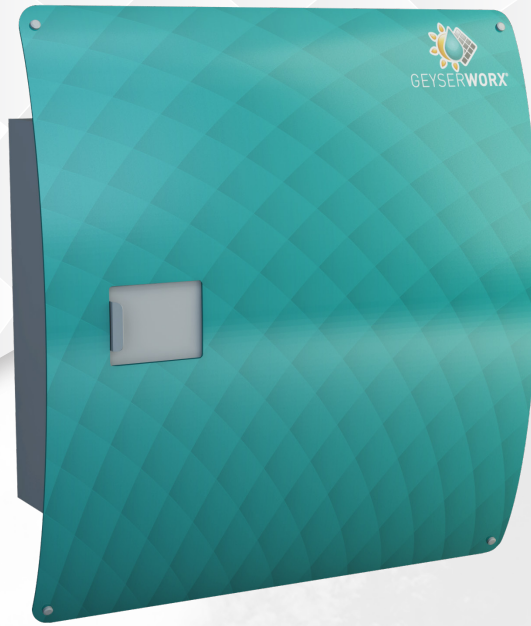
SAVE UP TO  
**30%**  
ON ELECTRICITY  
CONSUMPTION

**THE SMART WAY TO CONVERT TO SOLAR POWER!**

[www.geyserworx.co.za](http://www.geyserworx.co.za)



# GEYSERWORX®



**INTELLIGENT ELECTRONIC CONTROLLER**



**MICRO PROCESSOR BASED**



**CONVERTS PV POWER TO GEYSER POWER**



**SYSTEM INCLUDES PV PANELS**



**PHONE APP MONITORING & GEYSER SETUP**



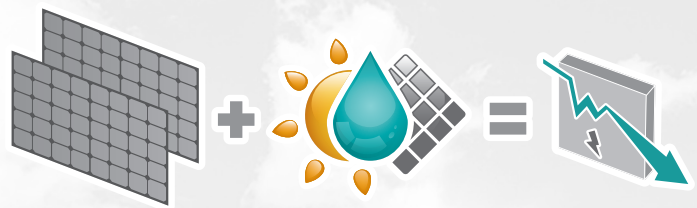
**EXPANDABLE TO CONTROL MULTIPLE GEYSERS**



**3 STANDARD FASCIA COLOURS AVAILABLE**



**CUSTOM FASCIA DESIGNS ON REQUEST**



## GEYSERWORX® SYSTEM OFFERING

### SYSTEM INCLUDES:

- PV panels complete with mounting brackets and connecting wiring.
- Temperature sensor.
- Available with or without acrylic fascia.
- Wi-Fi remote for smart phone interface to allow for full monitoring and control of geyser.

### GEYSERWORX® OPTIONAL EXTRA:

- Extension box.
- IP65 Outdoor box.

### GEYSERWORX® OPERATION MODES:

Automatic	Manual	Timer	Holiday
✓	✓	✓	✓

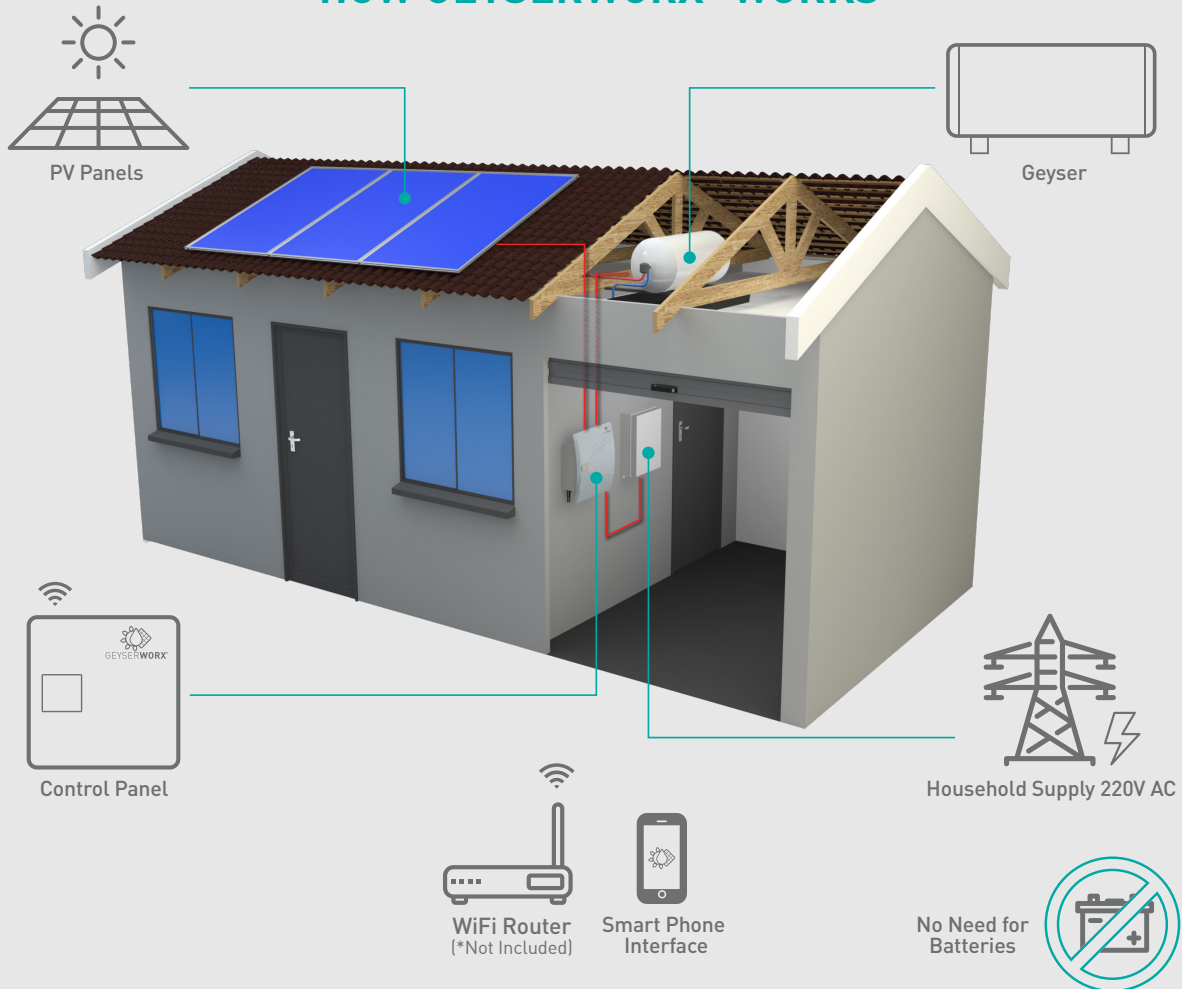
## THE SMART WAY TO CONVERT TO SOLAR POWER!

[www.geyserworx.co.za](http://www.geyserworx.co.za)



# GEYSERWORX®

## HOW GEYSERWORX® WORKS



## GEYSERWORX® ADVANTAGES

- Save up to 30% on electricity consumption.
- Easy and quick installation of the system (+/- 4 hrs).
- Use the existing geysor.
- No batteries required.
- No loading of the roof and roof trusses.
- No moving parts, thus no wear and tear.
- No modification of the plumbing.
- No glycerine or other heating medium that may contaminate the water.
- Use of internet / wireless technologies to manage and set the GeysorWorx® parameters.
- 2 year guarantee on Geysorworx® controller .
- 20 year OEM guarantee on the components.

## GEYSERWORX® COMPLIANCE

- All wiring must be installed in accordance with all local regulations. [\(including power and signal cables\)](#)
- Power wiring must conform to the local electrical code. Use of a qualified contractor and approval by the local wiring inspector ensures compliance to this code.
- Circuit capacity limits are governed by the local regulations. Refer to these, and any other applicable local codes, to determine circuit capacities. Circuits connected to outlets should never exceed 15A load.
- The grounding system must be installed in accordance with the SABS Electrical Code, and any other applicable electrical codes.

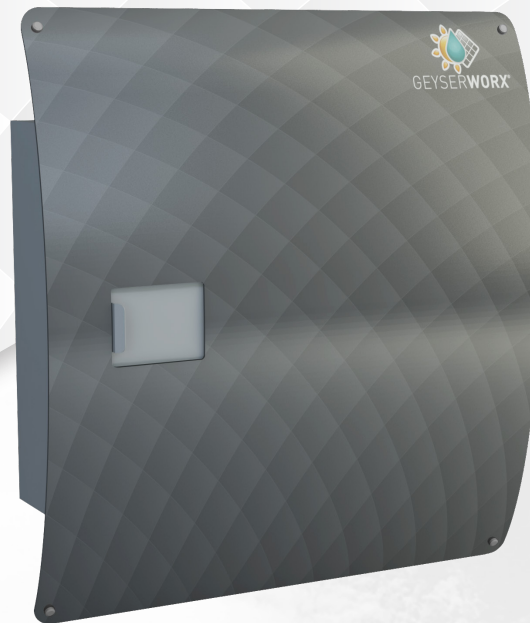
(To include: IEEE-142; Lightning Protection Institute Installation Code LPI-175; NFPA-78 (ANSI); IEEE Std. 142-1972; Code LPI-175)

## THE SMART WAY TO CONVERT TO SOLAR POWER!

[www.geyserworx.co.za](http://www.geyserworx.co.za)



# GEYSERWORX®



## GEYSERWORX® SPECIFICATIONS

<b>Operating Voltage:</b>	20 to 250V DC
<b>Mains Voltage:</b>	220 V AC, 50Hz
<b>Geysers Element Rating:</b>	1kW, 2kW, 3kW & 4kW
<b>Geysers Temperature Control Range:</b>	48 °C to 85 °C
<b>Operating Ambient Temperature:</b>	-10 °C to 55 °C
<b>Temperature Display Range:</b>	0 °C - 130°C
<b>Earth Leakage Protection at:</b>	25mA action time ≤ 0,1 second.
<b>Heat Failure - When Increase at a Rate of:</b>	2 °C or less per hour.
<b>Dry Heat Detection - Empty Cylinder:</b>	Required
<b>Temperature Tolerance:</b>	< 2%
<b>Temperature Differential Setting:</b>	1°C
<b>Temperature Probe Failure Detection:</b>	Required
<b>Temperature Probe Range for Geysers:</b>	-30 °C to +130 °C

Over 30 Years of Service Excellence in the Technology Industry.

Quality Management  
ISO 9001:2008  
► Voluntary participation  
in regular monitoring



HEAD OFFICE | GAUTENG | SOUTH AFRICA

13 -17 Rembrandt Str. | Petervale | Bryanston

P O Box 97757 | Petervale | 2151 | Z.A.

Tel. +27 (0)11 803 0570 | +27 (0)11 231 8900

Fax. +27 (0)11 803 3486

