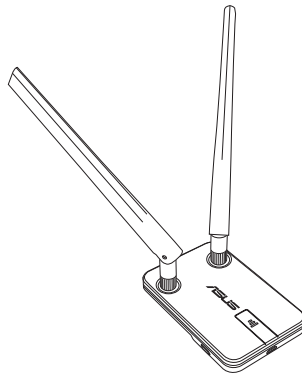




# **USB-N14**

## **Dual-band Wireless-AC600**

### **USB Adapter**



# **User Manual**

E10123  
First Edition  
January 2015

**Copyright © 2015 ASUSTeK Computer Inc. All Rights Reserved.**

No part of this manual, including the products and software described in it, may be reproduced, transmitted, transcribed, stored in a retrieval system, or translated into any language in any form or by any means, except documentation kept by the purchaser for backup purposes, without the express written permission of ASUSTeK Computer Inc. ("ASUS").

Product warranty or service will not be extended if: (1) the product is repaired, modified or altered, unless such repair, modification of alteration is authorized in writing by ASUS; or (2) the serial number of the product is defaced or missing.

ASUS PROVIDES THIS MANUAL "AS IS" WITHOUT WARRANTY OF ANY KIND, EITHER EXPRESS OR IMPLIED, INCLUDING BUT NOT LIMITED TO THE IMPLIED WARRANTIES OR CONDITIONS OF MERCHANTABILITY OR FITNESS FOR A PARTICULAR PURPOSE. IN NO EVENT SHALL ASUS, ITS DIRECTORS, OFFICERS, EMPLOYEES OR AGENTS BE LIABLE FOR ANY INDIRECT, SPECIAL, INCIDENTAL, OR CONSEQUENTIAL DAMAGES (INCLUDING DAMAGES FOR LOSS OF PROFITS, LOSS OF BUSINESS, LOSS OF USE OR DATA, INTERRUPTION OF BUSINESS AND THE LIKE), EVEN IF ASUS HAS BEEN ADVISED OF THE POSSIBILITY OF SUCH DAMAGES ARISING FROM ANY DEFECT OR ERROR IN THIS MANUAL OR PRODUCT.

SPECIFICATIONS AND INFORMATION CONTAINED IN THIS MANUAL ARE FURNISHED FOR INFORMATIONAL USE ONLY, AND ARE SUBJECT TO CHANGE AT ANY TIME WITHOUT NOTICE, AND SHOULD NOT BE CONSTRUED AS A COMMITMENT BY ASUS. ASUS ASSUMES NO RESPONSIBILITY OR LIABILITY FOR ANY ERRORS OR INACCURACIES THAT MAY APPEAR IN THIS MANUAL, INCLUDING THE PRODUCTS AND SOFTWARE DESCRIBED IN IT.

Products and corporate names appearing in this manual may or may not be registered trademarks or copyrights of their respective companies, and are used only for identification or explanation and to the owners' benefit, without intent to infringe.

# Table of contents

<b>1. Introduction.....</b>	<b>4</b>
Package contents.....	4
System requirements.....	4
Status indicator.....	4
<b>2. Installing the USB-N14 driver.....</b>	<b>5</b>
<b>3. Connecting to a wireless network.....</b>	<b>7</b>
Connecting to a wireless network using WPS.....	8
<b>4. Troubleshooting.....</b>	<b>9</b>
<b>5. Glossary.....</b>	<b>10</b>
<b>Notices .....</b>	<b>20</b>
ASUS Contact Information.....	24

# 1. Introduction

## Package contents

- ASUS USB-N14 adapter x1
- Quick Start Guide x1
- Support CD x1
- Warranty card x1
- USB cable x1



If any of the above items is damaged or missing, contact your retailer immediately.

## System requirements

Before using the USB-N14 adapter, check if your system meets the following requirements:

- Windows® XP / Vista / 7 / 8 / Mac OSX / Linux
- 512MB system memory or larger
- USB 2.0 port
- Optical disk drive

## Operating and storage environment

1. Operating temperature: ambient temperature between 0°C ~ 40°C
2. Storage temperature: ambient temperature between -10°C ~ 70°C
3. Humidity: 5% ~ 90% (non-condensing)

## Status indicator

LED	Status	Description
Link	On	USB-N14 has connected to a wireless network successfully.
	Off	USB-N14 is not connected.

## Using Wi-Fi Protected Setup (for Windows® OS only)

To enable Wi-Fi Protected Setup (WPS), press the **WPS button** on the USB-N14.

## 2. Installing the USB-N14 driver



Install the driver from the bundled Support CD before inserting the USB-N14 into your computer.

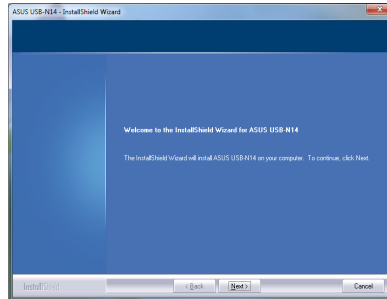
### To install the driver for your ASUS USB-N14:

1. Place the bundled Support CD in the optical drive. An Autorun screen appears if the Autorun function is enabled on your computer.

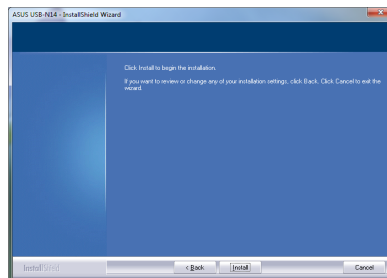


If the Autorun function is not enabled on your computer, double-click **SETUP.EXE** from the root directory to run the Support CD.

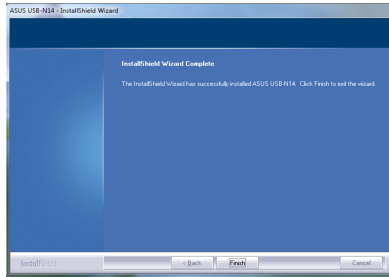
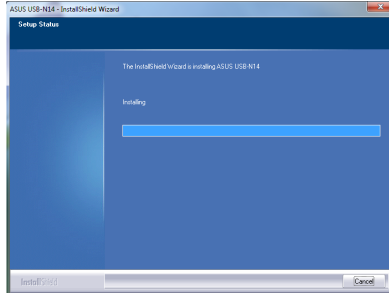
2. An **InstallShield Wizard** screen appears. Click **Next** to continue.



3. Click **Install** to install driver to default destination folder.



4. Click **Finish** to complete installation.



5. Connect the USB-N14 to the USB port on your computer using the bundled USB cable.

Windows will automatically install the driver for the device.

A message will appear in the Windows® notification area and the LED indicator on USB-N14 turns solid blue indicating that device drivers have successfully been installed.



### 3. Connecting to a wireless network

To connect the USB-N14 Wireless adapter to a station or Access Point:

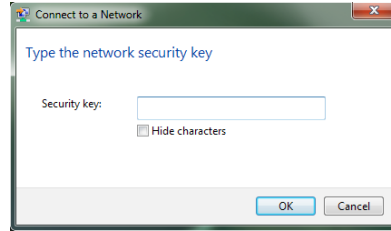
1. Click the network connection icon in the Windows® notification area to show the available wireless networks list.



2. Select an Access Point (AP) from the list and click **Connect**.



3. If Security is enabled on the AP or station, provide the required password or passkey. Click **OK**.



## Connecting to a wireless network using WPS

The ASUS USB-N14 supports Wi-Fi Protected Setup (WPS) for Windows® operating systems for securing wireless connections.



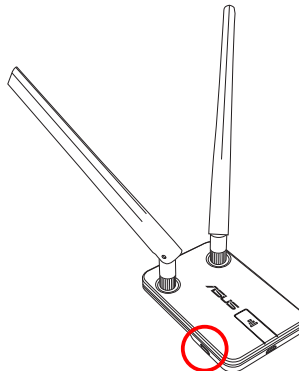
---

Ensure that the AP you are trying to connect to supports the WPS feature.

---

### **To connect the USB-N14 Wireless adapter to a WPS-enabled AP using the WPS button:**

1. Enable the WPS function of the wireless AP.
2. Press both the WPS buttons on the AP and USB-N14 until the USB-N14 connects to the wireless AP to establish a secure connection.





## 4. Troubleshooting

This chapter provides solutions to problems which you may encounter when installing or using ASUS USB-N14. Contact a qualified service technician for assistance if the problem still persists after you have performed the troubleshooting solutions.

### How do I verify that my WLAN adapter is installed properly?

1. Right-click **My Computer** from the **Start** menu, then select **Properties**.
2. Select the **Hardware** tab, then click **Device Manager**.
3. Double-click **Network adapters**.
4. Double-click **ASUS USB-N14 USB Wireless Adapter**. An **ASUS USB-N14 USB Wireless Adapter** window appears.
5. Check **Device status** to see if the WLAN adapter is working properly.

### My WLAN adapter cannot connect to any Access Point.

- Check if **Network Type** is set to **Infrastructure** mode.
- Check if the **SSID** of your WLAN adapter is the same as that of the Access Point you want to connect to.
- Check if the **Encryption** settings of your WLAN adapter are the same as the Access Point you want to connect to.

### My WLAN adapter cannot connect to a station or WLAN adapter.

- Check if **Network Type** is set to **Ad Hoc** mode.
- Check if the **SSID** of your WLAN adapter is the same as that of the station or the WLAN adapter you want to connect to.
- Check if the **Channel** of your WLAN adapter is the same as that of the station or the WLAN adapter you want to connect to.
- Check if the **Encryption** settings of your WLAN adapter are the same as those of the station or the WLAN adapter you want to connect to.

### The connection quality is bad and the signal strength is weak.

- Keep your WLAN adapter away from microwave ovens and large metal objects to avoid radio interference.
- Move your WLAN adapter closer to the access point, station, or WLAN adapter you want to connect to.

## 5. Glossary

### **Access Point (AP)**

A networking device that seamlessly connects wired and wireless networks. Access Points combined with a distributed system support the creation of multiple radio cells that enable roaming throughout a facility.

### **Ad Hoc**

A wireless network composed solely of stations within mutual communication range of each other (no Access Point).

### **Basic Rate Set**

This option allows you to specify the data transmission rate.

### **Basic Service Area (BSS)**

A set of stations controlled by a single coordination function.

### **Broadband**

A type of data transmission in which a single medium (such as cable) carries several data at once.

### **Channel**

An instance of medium use for the purpose of passing protocol data units that may be used simultaneously, in the same volume of space, with other instances of medium use (on other channels) by other instances of the same physical layer, with an acceptably low frame error ratio due to mutual interference.

### **Client**

A client is the desktop or mobile PC that is connected to your network.

## **COFDM (for 802.11a or 802.11g)**

Signal power alone is not enough to maintain 802.11b-like distances in an 802.11a/g environment. To compensate, a new physical-layer encoding technology was designed that departs from the traditional direct-sequence technology being deployed today. This technology is called COFDM (coded OFDM). COFDM was developed specifically for indoor wireless use and offers performance much superior to that of spread-spectrum solutions. COFDM works by breaking one high-speed data carrier into several lowerspeed subcarriers, which are then transmitted in parallel. Each high-speed carrier is 20MHz wide and is broken up into 52 subchannels, each approximately 300KHz wide. COFDM uses 48 of these subchannels for data, while the remaining four are used for error correction. COFDM delivers higher data rates and a high degree of multipath reflection recovery, thanks to its encoding scheme and error correction.

Each subchannel in the COFDM implementation is about 300KHz wide. At the low end of the speed gradient, BPSK (binary phase shift keying) is used to encode 125Kbps of data per channel, resulting in a 6,000Kbps, or 6Mbps, data rate. Using quadrature phase shift keying, you can double the amount of data encoded to 250Kbps per channel, yielding a 12Mbps data rate. And by using 16-level quadrature amplitude modulation encoding 4bits per hertz, you can achieve a data rate of 24Mbps. The 802.11a/g standard specifies that all 802.11a/g-compliant products must support these basic data rates. The standard also lets the vendor extend the modulation scheme beyond 24Mbps. Remember, the more bits per cycle (hertz) that are encoded, the more susceptible the signal will be to interference and fading, and ultimately, the shorter the range, unless power output is increased.

## **Default Key**

This option allows you to select the default WEP key. This option allows you to use WEP keys without having to remember or write them down. The WEP keys generated using the Pass Phrase is compatible with other WLAN products. The Pass Phrase option is not as secure as manual assignment.

## **Device Name**

Also known as DHCP client ID or network name. Sometimes provided by an ISP when using DHCP to assign addresses.

## **DHCP (Dynamic Host Configuration Protocol)**

This protocol allows a computer (or many computers on your network) to be automatically assigned a single IP address from a DHCP server.

## **DNS Server Address (Domain Name System)**

DNS allows Internet host computers to have a domain name and one or more IP addresses. A DNS server keeps a database of host computers and their respective domain names and IP addresses, so that when a user enters a domain name into the Internet browser, the user is sent to the proper IP address. The DNS server address used by the computers on your home network is the location of the DNS server your ISP has assigned.

## **DSL Modem (Digital Subscriber Line)**

A DSL modem uses your existing phone lines to transmit data at high speeds.

## **Direct-Sequence Spread Spectrum (for 802.11b)**

Spread spectrum (broadband) uses a narrowband signal to spread the transmission over a segment of the radio frequency band or spectrum. Direct-sequence is a spread spectrum technique where the transmitted signal is spread over a particular frequency range.

Direct-sequence systems communicate by continuously transmitting a redundant pattern of bits called a chipping sequence. Each bit of transmitted data is mapped into chips and rearranged into a pseudorandom spreading code to form the chipping sequence. The chipping sequence is combined with a transmitted data stream to produce the output signal.

Wireless mobile clients receiving a direct-sequence transmission use the spreading code to map the chips within the chipping sequence back into bits to recreate the original data transmitted by the wireless device. Intercepting and decoding a direct-sequence transmission requires a predefined algorithm to associate the spreading code used by the transmitting wireless device to the receiving wireless mobile client.

This algorithm is established by IEEE 802.11b specifications. The bit redundancy within the chipping sequence enables the receiving wireless mobile client to recreate the original data pattern, even if bits in the chipping sequence are corrupted by interference. The ratio of chips per bit is called the spreading ratio. A high spreading ratio increases the resistance of the signal to interference. A low spreading ratio increases the bandwidth available to the user. The wireless device uses a constant chip rate of 11Mchips/s for all data rates, but uses different modulation schemes to encode more bits per chip at the higher data rates. The wireless device is capable of an 11 Mbps data transmission rate, but the coverage area is less than a 1 or 2 Mbps wireless device since coverage area decreases as bandwidth increases.

## **Encryption**

This provides wireless data transmissions with a level of security. This option allows you to specify a 64-bit or a 128-bit WEP key. A 64-bit encryption contains 10 hexadecimal digits or 5 ASCII characters. A 128-bit encryption contains 26 hexadecimal digits or 13 ASCII characters.

64-bit and 40-bit WEP keys use the same encryption method and can interoperate on wireless networks. This lower level of WEP encryption uses a 40-bit (10 hexadecimal digits assigned by the user) secret key and a 24-bit Initialization Vector assigned by the device. 104-bit and 128-bit WEP keys use the same encryption method.

All wireless clients in a network must have identical WEP keys with the access point to establish connection. Keep a record of the WEP encryption keys.

## **Extended Service Set (ESS)**

A set of one or more interconnected basic service set (BSSs) and integrated local area networks (LANs) can be configured as an Extended Service Set.

## **ESSID (Extended Service Set Identifier)**

You must have the same ESSID entered into the gateway and each of its wireless clients. The ESSID is a unique identifier for your wireless network.

## **Ethernet**

The most widely used LAN access method, which is defined by the IEEE 802.3 standard. Ethernet is normally a shared media LAN meaning all devices on the network segment share total bandwidth. Ethernet networks operate at 10Mbps using CSMA/CD to run over 10-BaseT cables.

## **Firewall**

A firewall determines which information passes in and out of a network. NAT can create a natural firewall by hiding a local network's IP addresses from the Internet. A Firewall prevents anyone outside of your network from accessing your computer and possibly damaging or viewing your files.

## **Gateway**

A network point that manages all the data traffic of your network, as well as to the Internet and connects one network to another.

## **ICS**

ICS is used to share one computer's Internet connection with the rest of the computers on your network. When this computer is connected to the Internet, all the communications to and from the Internet on your network are sent through this computer which is called the host computer. The rest of the computers can send and receive e-mail messages and access the web as if it were connected directly to the Internet.

## **IEEE**

The Institute of Electrical and Electronics Engineers. The IEEE sets standards for networking, including Ethernet LANs. IEEE standards ensure interoperability between systems of the same type.

### **IEEE 802.11**

IEEE 802.xx is a set of specifications for LANs from the Institute of Electrical and Electronic Engineers (IEEE). Most wired networks conform to 802.3, the specification for CSMA/CD based Ethernet networks or 802.5, the specification for token ring networks. 802.11 defines the standard for wireless LANs encompassing three incompatible (non-interoperable) technologies: Frequency Hopping Spread Spectrum (FHSS), Direct Sequence Spread Spectrum (DSSS), and Infrared. 802.11 specifies a carrier sense media access control and physical layer specifications for 1 and 2 Mbps wireless LANs.

#### **IEEE 802.11a (54Mbps/sec)**

Compared with 802.11b: The 802.11b standard was designed to operate in the 2.4GHz ISM (Industrial, Scientific and Medical) band using direct-sequence spreadspectrum technology. The 802.11a standard, on the other hand, was designed to operate in the more recently allocated 5-GHz UNII (Unlicensed National Information Infrastructure) band. And unlike 802.11b, the 802.11a standard departs from the traditional spread-spectrum technology, instead using a frequency division multiplexing scheme that's intended to be friendlier to office environments.

The 802.11a standard, which supports data rates of up to 54 Mbps, is the Fast Ethernet analog to 802.11b, which supports data rates of up to 11 Mbps. Like Ethernet and Fast Ethernet, 802.11b and 802.11a use an identical MAC (Media Access Control). However, while Fast Ethernet uses the same physical-layer encoding scheme as Ethernet (only faster), 802.11a uses an entirely different encoding scheme, called OFDM (orthogonal frequency division multiplexing). The 802.11b spectrum is plagued by saturation from wireless phones, microwave ovens and other emerging wireless technologies, such as Bluetooth. In contrast, 802.11a spectrum is relatively free of interference.

The 802.11a standard gains some of its performance from the higher frequencies at which it operates. The laws of information theory tie frequency, radiated power and distance together in an inverse relationship. Thus, moving up to the 5GHz spectrum from 2.4GHz will lead to shorter distances, given the same radiated power and encoding scheme.

## **Compared with 802.11g**

802.11a is a standard for access points and radio NICs that is ahead of 802.11g in the market by about six months. 802.11a operates in the 5GHz frequency band with twelve separate non-overlapping channels. As a result, you can have up to twelve access points set to different channels in the same area without them interfering with each other. This makes access point channel assignment much easier and significantly increases the throughput the wireless LAN can deliver within a given area. In addition, RF interference is much less likely because of the less-crowded 5GHz band.

## **IEEE 802.11b (11Mbps/sec)**

In 1997, the Institute of Electrical and Electronics Engineers (IEEE) adopted the 802.11 standard for wireless devices operating in the 2.4 GHz frequency band. This standard includes provisions for three radio technologies: direct sequence spread spectrum, frequency hopping spread spectrum, and infrared. Devices that comply with the 802.11 standard operate at a data rate of either 1 or 2 Mbps.

In 1999, the IEEE created the 802.11b standard. 802.11b is essentially identical to the 802.11 standard except 802.11b provides for data rates of up to 11Mbps for direct sequence spread spectrum devices. Under 802.11b, direct sequence devices can operate at 11Mbps, 5.5Mbps, 2Mbps, or 1Mbps. This provides interoperability with existing 802.11 direct sequence devices that operate only at 2Mbps.

Direct sequence spread spectrum devices spread a radio signal over a range of frequencies. The IEEE 802.11b specification allocates the 2.4GHz frequency band into 14 overlapping operating Channels. Each Channel corresponds to a different set of frequencies.

## **IEEE 802.11g**

802.11g is a new extension to 802.11b (used in majority of wireless LANs today) that broadens 802.11b's data rates to 54 Mbps within the 2.4 GHz band using OFDM (orthogonal frequency division multiplexing) technology. 802.11g allows backward compatibility with 802.11b devices but only at 11 Mbps or lower, depending on the range and presence of obstructions.

## **Infrastructure**

A wireless network centered about an access point. In this environment, the access point not only provides communication with the wired network but also mediates wireless network traffic in the immediate neighborhood.

## **IP (Internet Protocol)**

The TCP/IP standard protocol that defines the IP datagram as the unit of information passed across an Internet and provides the basis for connectionless packet delivery service. IP includes the ICMP control and error message protocol as an integral part. It provides the functional equivalent of ISO OSI Network Services.

## **IP Address**

An IP address is a 32-bit number that identifies each sender or receiver of information that is sent across the Internet. An IP address has two parts: the identifier of a particular network on the Internet and an identifier of the particular device (which can be a server or a workstation) within that network.

## **ISM Bands (Industrial, Scientific, and Medicine Bands)**

Radio frequency bands that the Federal Communications Commission (FCC) authorized for wireless LANs. The ISM bands are located at 902MHz, 2.400GHz, and 5.7GHz.

## **ISP (Internet Service Provider)**

An organization that provides access to the Internet. Small ISPs provide service via modem and ISDN while the larger ones also offer private line hookups (T1, fractional T1, etc.).

## **LAN (Local Area Network)**

A communications network that serves users within a defined geographical area. The benefits include the sharing of Internet access, files and equipment like printers and storage devices. Special network cabling (10 Base-T) is often used to connect the PCs together.

## **MAC Address (Media Access Control)**

A MAC address is the hardware address of a device connected to a network.

## **NAT (Network Address Translation)**

NAT masks a local network's group of IP addresses from the external network, allowing a local network of computers to share a single ISP account. This process allows all of the computers on your home network to use one IP address. This will enable access to the Internet from any computer on your home network without having to purchase more IP addresses from your ISP.



## **NIC (Network Interface Card)**

A network adapter inserted into a computer so that the computer can be connected to a network. It is responsible for converting data from stored in the computer to the form transmitted or received.

## **Packet**

A basic message unit for communication across a network. A packet usually includes routing information, data, and sometimes error detection information.

## **Pass Phrase**

The Wireless Settings utility uses an algorithm to generate four WEP keys based on the typed combination.

## **PCMCIA (Personal Computer Memory Card International Association)**

The Personal Computer Memory Card International Association (PCMCIA), develops standards for PC cards, formerly known as PCMCIA cards. These cards are available in three types, and are about the same length and width as credit cards. However, the different width of the cards ranges in thickness from 3.3 mm (Type I) to 5.0 mm (Type II) to 10.5 mm (Type III). These cards can be used for various functions, including memory storage, land line modems and wireless modems.

## **PPP (Point-to-Point Protocol)**

PPP is a protocol for communication between computers using a serial interface, typically a personal computer connected by phone line to a server.

PPPoE (Point-to-Point Protocol over Ethernet)

Point-to-Point Protocol is a method of secure data transmission. PPP using Ethernet to connect to an ISP.

## **Preamble**

Allows you to set the preamble mode for a network to Long, Short, or Auto. The default preamble mode is Long.

## **Radio Frequency (RF) Terms: GHz, MHz, Hz**

The international unit for measuring frequency is Hertz (Hz), equivalent to the older unit of cycles per second. One megahertz (MHz) is one million Hertz. One gigahertz (GHz) is one billion Hertz. The standard US electrical power frequency is 60Hz, the AM broadcast radio frequency band is 0.55-1.6MHz, the FM broadcast radio frequency band is 88-108MHz, and wireless 802.11 LANs operate at 2.4GHz.

## **SSID (Service Set Identifier)**

SSID is a group name shared by every member of a wireless network. Only client PCs with the same SSID are allowed to establish a connection. Enabling the **Response to Broadcast SSID requests** option allows the device to broadcast its SSID in a wireless network. This allows other wireless devices to scan and establish communication with the device. Unchecking this option hides the SSID to prevent other wireless devices from recognizing and connecting to the device.

## **Station**

Any device containing IEEE 802.11 wireless medium access conformity.

## **Subnet Mask**

A subnet mask is a set of four numbers configured like an IP address. It is used to create IP address numbers used only within a particular network.

## **TCP (Transmission Control Protocol)**

The standard transport level protocol that provides the full duplex, stream service on which many application protocols depend. TCP allows a process or one machine to send a stream of data to a process on another. Software implementing TCP usually resides in the operating system and uses the IP to transmit information across the network.

## **WAN (Wide Area Network)**

A system of LANs, connected together. A network that connects computers located in separate areas, (i.e., different buildings, cities, countries). The Internet is a wide area network.

## **WECA (Wireless Ethernet Compatibility Alliance)**

An industry group that certifies cross-vender interoperability and compatibility of IEEE 802.11b wireless networking prod WPA (Wi-Fi Protected Access)

## **WPA (Wi-Fi Protected Access)**

Wi-Fi Protected Access (WPA) is an improved security system for 802.11. It is part of the 802.11i draft security standard. WPA encompasses TKIP (Temporal Key Integrity Protocol) along with MIC (Message Integrity Check) and other fixes to WEP such as Weak IV (Initialization Vector) filtering and Random IV generation. TKIP uses 802.1x to deploy and change temporary keys as opposed to static WEP keys once used in the past. It is a significant improvement over WEP. WPA is part of a complete security solution. WPA also requires authentication servers in enterprise security solutions.

## **Requirements**

(1) A WPA compatible Access Point or Wireless router, (2) Operating system updates that support WPA. In XP, an updated Windows Zero Config service is needed. Users can download the Windows XP WPA patch here:

<http://microsoft.com/downloads/details.aspx?FamilyId=009D8425-CE2B-47A4-ABEC-274845DC9E91&displaylang=en>

Please note that this patch requires the installation Windows XP Service Pack 1, which is available here: <http://www.microsoft.com/WindowsXP/pro/downloads/servicepacks/sp1/default.asp>

For earlier Windows Operating systems, a WPA capable supplicant is required such as Funk Software's Odyssey Client.

## **WLAN (Wireless Local Area Network)**

This is a group of computers and other devices connected wirelessly in a small area. A wireless network is referred to as LAN or WLAN.

# Notices

## Federal Communications Commission

This device complies with FCC Rules Part 15. Operation is subject to the following two conditions:

- This device may not cause harmful interference, and
- This device must accept any interference received, including interference that may cause undesired operation.

This equipment has been tested and found to comply with the limits for a class B digital device pursuant to part 15 of the FCC Rules. These limits are designed to provide reasonable protection against harmful interference in a residential installation. This equipment generates, uses and can radiate radio frequency energy and, if not installed and used in accordance with the instructions, may cause harmful interference to radio communications. However, there is no guarantee that interference will not occur in a particular installation. If this equipment does cause harmful interference to radio or television reception, which can be determined by turning the equipment off and on, the user is encouraged to try to correct the interference by one or more of the following measures:

- Reorient or relocate the receiving antenna.
- Increase the separation between the equipment and receiver.
- Connect the equipment into an outlet on a circuit different from that to which the receiver is connected.
- Consult the dealer or an experienced radio/TV technician for help.



---

**WARNING:** Any changes or modifications not expressly approved by the party responsible for compliance could void the user's authority to operate the equipment.

---

Operate the device in 5150-5250MHz frequency band for indoor use only.

## Prohibition of Co-location

This device and its antenna(s) must not be co-located or operating in conjunction with any other antenna or transmitter.

## **FCC Radiation Exposure Statement**

This equipment complies with RFCC radiation exposure limits set forth for an uncontrolled environment .

This equipment should be installed and operated with minimum 20cm between the radiator and your body.

## **CE Mark Warning**

This is a Class B product, in a domestic environment, this product may cause radio interference, in which case the user may be required to take adequate measures.

Operation Channels: Ch1~11 for N. America, Ch1~14 Japan, Ch1~ 13 Europe (ETSI)

## **DGT Warning Statement**

### **Article 12**

Without permission, any company, firm or user shall not alter the frequency, increase the power, or change the characteristics and functions of the original design of the certified lower power frequency electric machinery.

### **Article 14**

The application of low power frequency electric machineries shall not affect the navigation safety nor interfere a legal communication, if an interference is found, the service will be suspended until improvement is made and the interference no longer exists.

### **低功率電波輻射性電機管理辦法**

(1)「經型式認證合格之低功率射頻電機，非經許可，公司、商號或使用者均不得擅自變更頻率、加大功率或變更原設計之特性及功能」以及(2)「低功率射頻電機之使用不得影響飛航安全及干擾合法通信；經發現有干擾現象時，應立即停用，並改善至無干擾時方得繼續使用。前項合法通信，指依電信法規定作業之無線電通信。低功率射頻電機須忍受合法通信或工業、科學及醫療用電波輻射性電機設備之干擾」。

## **IC Warning Statement**

Under Industry Canada regulations, this radio transmitter may only operate using an antenna of a type and maximum (or lesser) gain approved for the transmitter by Industry Canada. To reduce potential radio interference to other users, the antenna type and its gain should be so chosen that the equivalent isotropically radiated power (e.i.r.p.) is not more than that necessary for successful communication.

This radio transmitter(IC: 3568A-USBAC51) has been approved by Industry Canada to operate with the antenna types listed below with the maximum permissible gain and required antenna impedance for each antenna type indicated. Antenna types not included in this list, having a gain greater than the maximum gain indicated for that type, are strictly prohibited for use with this device.

This Class [B] digital apparatus complies with Canadian ICES-003.

Cet appareil numérique de la classe [B] est conforme à la norme NMB-003 du Canada.

For product available in the USA/Canada market, only channel 1~11 can be operated.

Selection of other channels is not possible.

## **IC Radiation Exposure Statement:**

This equipment complies with IC RSS-102 radiation exposure limits set forth for an uncontrolled environment. This equipment should be installed and operated with minimum distance 20cm between the radiator & your body.

Operation is subject to the following two conditions: (1) this device may not cause interference, and (2) this device must accept any interference, including interference that may cause undesired operation of the device.

## **Canada, avis d'Industry Canada (IC)**

Cet appareil numérique de classe B est conforme aux normes canadiennes ICES-003 et RSS-210.

Son fonctionnement est soumis aux deux conditions suivantes : (1) cet appareil ne doit pas causer d'interférence et (2) cet appareil doit accepter toute interférence, notamment les interférences qui peuvent affecter son fonctionnement.

### **Informations concernant l'exposition aux fréquences radio (RF)**

La puissance de sortie émise par l'appareil de sans fil Dell est inférieure à la limite d'exposition aux fréquences radio d'Industry Canada (IC). Utilisez l'appareil de sans fil Dell de façon à minimiser les contacts humains lors du fonctionnement normal.

Ce périphérique a été évalué et démontré conforme aux limites SAR (Specific Absorption Rate – Taux d'absorption spécifique) d'IC lorsqu'il est installé dans des produits hôtes particuliers qui fonctionnent dans des conditions d'exposition à des appareils portables (les antennes se situent à moins de 20 centimètres du corps d'une personne). Ce périphérique est homologué pour l'utilisation au Canada. Pour consulter l'entrée correspondant à l'appareil dans la liste d'équipement radio (REL - Radio Equipment List) d'Industry Canada rendez-vous sur:

<http://www.ic.gc.ca/app/sitt/reitel/srch/nwRdSrch.do?lang=eng>

Pour des informations supplémentaires concernant l'exposition aux RF au Canada rendezvous sur : <http://www.ic.gc.ca/eic/site/smt-gst.nsf/eng/sf08792.html>

## **ASUS Recycling/Takeback Services**

ASUS recycling and takeback programs come from our commitment to the highest standards for protecting our environment. We believe in providing solutions for you to be able to responsibly recycle our products, batteries, other components as well as the packaging materials. Please go to <http://csr.asus.com/english/Takeback.htm> for the detailed recycling information in different regions.

## **REACH**

Complying with the REACH (Registration, Evaluation, Authorisation, and Restriction of Chemicals) regulatory framework, we published the chemical substances in our products at ASUS REACH website at <http://csr.asus.com/english/REACH.htm>.

## **ASUS Contact Information**

### **ASUSTeK COMPUTER INC. (Asia Pacific)**

**Address** 15 Li-Te Road, Peitou, Taipei, Taiwan 11259  
**Website** [www.asus.com.tw](http://www.asus.com.tw)

#### **Technical Support**

**Telephone** +886228943447  
**Support Fax** +886228907698  
**Online support** [support.asus.com](http://support.asus.com)

### **ASUS COMPUTER INTERNATIONAL (America)**

**Address** 800 Corporate Way, Fremont, CA 94539, USA  
**Telephone** +15029550883  
**Fax** +15029338713  
**Website** [usa.asus.com](http://usa.asus.com)  
**Online support** [support.asus.com](http://support.asus.com)

### **ASUS COMPUTER GmbH (Germany and Austria)**

**Address** Harkort Str. 21-23, D-40880 Ratingen,  
Germany  
**Fax** +492102959911  
**Website** [www.asus.de](http://www.asus.de)  
**Online contact** [www.asus.de/sales](http://www.asus.de/sales)

#### **Technical Support**

**Telephone (Component)** +491805010923\*  
**Telephone (System/Notebook/Eee/LCD)** +491805010920\*  
**Fax** +492102959911  
**Online support** [support.asus.com](http://support.asus.com)

\* EUR 0.14/minute from a German fixed landline; EUR 0.42/minute from a mobile phone.



<b>Manufacturer</b>	<b>ASUSTeK Computer Inc.</b> <b>Tel:</b> +886-2-2894-3447 <b>Address:</b> 4F., No. 150, LI-TE RD., PEITOU, TAIPEI 112, TAIWAN
<b>Authorised representative in Europe</b>	<b>ASUS Computer GmbH</b> <b>Address:</b> HARKORT STR. 21-23, 40880 RATINGEN, GERMANY
<b>Authorised distributors in Turkey</b>	<b>BOGAZICI BİL GİSAYAR SAN. VE TİC. A.Ş.</b> <b>Tel:</b> +90 212 3311000 <b>Address:</b> AYAZAGA MAH. KEMERBURGAZ CAD. NO.10 AYAZAGA/ İSTANBUL
	<b>CİZGİ Elektronik San. Tic. Ltd. Şti.</b> <b>Tel:</b> +90 212 3567070 <b>Address:</b> CEMAL SURURI CD. HALİM MERİC İS MERKEZİ No: 15/C D:5-6 34394 MECİDİYEKÖY/ İSTANBUL
	<b>KOYUNCU ELEKTRONİK BİLGİ İŞLEM SİST. SAN. VE DİŞ TİC. A.Ş.</b> <b>Tel:</b> +90 216 5288888 <b>Address:</b> EMEK MAH.ORDU CAD. NO:18, SARİGAZİ, SANCAKTEPE İSTANBUL

**AEEE Yönetmeliğine Uygundur.**

