

## Alliable Medical



## Thermovision Camera MT-30



MADE IN KOREA

- 1. Development Background**
- 2. Understanding the product**
- 3. Product/ Features**
- 4. Product comparison**
- 5. Applications**
- 6. Installation**
- 7. Certifications**
- 8. Video**
- 9. Price**
- 10. Contact Information**

At Alliable Medical it is our passion to continuously develop products with Korean manufacturers that are reliable, high quality, and affordable so that as many people can be protected as possible. The MT-30 stationary thermal imaging camera is the latest development in the fight against viruses such as covid-19.

## Key Advantages:

- **Price** – Stationary thermal imaging cameras tend to be quite expensive ranging anywhere from \$3,000 – over \$20,000, difficult to use, and includes unnecessary options/features that drive up the price. There are lower cost options, however, these are usually unreliable and made with cheap parts. Alternatively, the MT-30 is well built with high quality parts and is also considered to be the lowest price in the market within stationary thermal cameras. Focusing on the essential features and hardware drives down costs.
- **Convenience** – Portable handheld units require someone to check each individual person which can leave the user potentially exposed to viruses when coming into close contact with people, and people being checked may often feel uncomfortable with the process of being scanned. Additionally, individual checks may slow down foot traffic causing unnecessary bottlenecks and overcrowding. With the MT-30, many people can be scanned from a distance and the unit has an option to sound an alarm if a temperature reading is above the set temperature.
- **Technology** – Through continuous research and development, the MT-30 is the newest product (released in March 2020) in infrared imaging technology developed in Korea, that can do what other competitors can do within a small compact unit at a fraction of the price. No need to spend 4 to 10 times the price on other units that essentially perform the same functions.

## What is a thermal camera sensor?

An infrared thermal image sensor is a camera sensor that detects the infrared rays of an object with heat and generates a two-dimensional real-time temperature image.

There are other thermal imaging products in many countries such as China and Germany, but they are difficult to distribute due to price and yield issues.

Our thermal imaging sensor is very competitive in price compared to other products of the same performance (1/10 to 1/4 times lower price).



## theory of thermography



### Thermography

Technology that converts temperature information emitted from far-IR form into image



### thermal image sensor

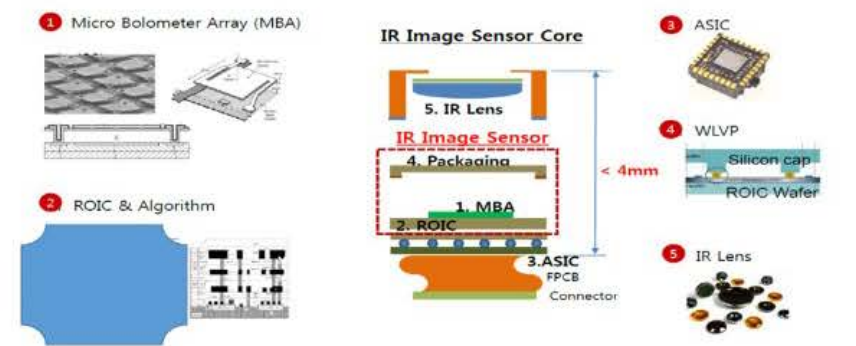
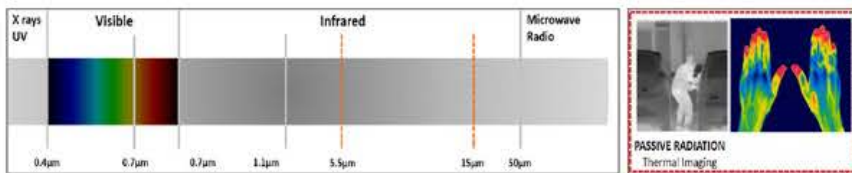
device/sensor of thermography



### thermal camera








a camera that measures the surface temp. of objects

a passive detector that do not require separate lighting & outstanding surveillance system regardless of bad weather and day/night





## Key Features:

	<p><b>Accurate Temperature Checks</b> MT-30 detects human body heat accurately. Deviation range <math>\pm 0.3^{\circ}\text{C}</math></p>
	<p><b>Easy Alarm Setting</b> (Setting option) When a certain temperature is detected, an alarm sounds automatically.</p>
	<p><b>Alarm Sounds</b> When an event occurs, an alarm sounds automatically. This allows the user to be less involved and lowers fatigue.</p>
	<p><b>Real-time PC monitoring</b> Monitors fevers in real time through the UI</p>
	<p><b>Image storage and management</b> Images are automatically saved when an alert occurs which makes it easier to track and manage events.</p>
	<p><b>The Lowest Price</b> MT-30 is the lowest price compared to the other competitors products with similar functions.</p>
	<p><b>Easy installation and use</b> Simple to follow instructions to be up and running quickly</p>

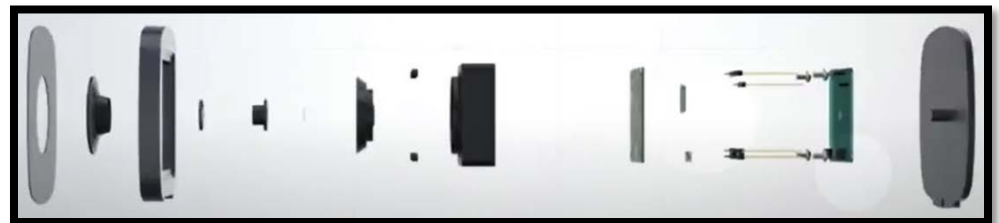
## Specifications:

Aspect	Specification	Aspect	Specification
Model	<b>MT-30</b>	Operating Environment	-20°C ~ 50°C
Resolution	80 x 60 Microbolometer Array	Viewer S/W	PC Software program
Shutterless	Shutterless configuration (Option : Shuttered)	Language	English
Viewing of angle	30°lens / 50°lens / 90°lens	Certification	KC and FCC (R-R-Y2H-MT30)
Measuring range	-20°C ~ 100°C (Extensible to 200°C)	Manufacturer / Country	EMTAKE Co., Ltd. / Korea
Relative temperature sensing power	0.1°C (@ 30°C)	Release Date	March 2020
Frame rate	1-30 Frame / sec(variable)	* Temperature deviation	± 0.3 °C
Network(Connection)	USB(micro 5pin)	* Type of sensor	Digital sensor
Size / Weigh	73 x 76 x 73 mm / 100g	Distributor	TOP LED

\* More details :

Longest detection distance : 7[m]

Recommended detection distance : 3[m]



## Viewing Angles

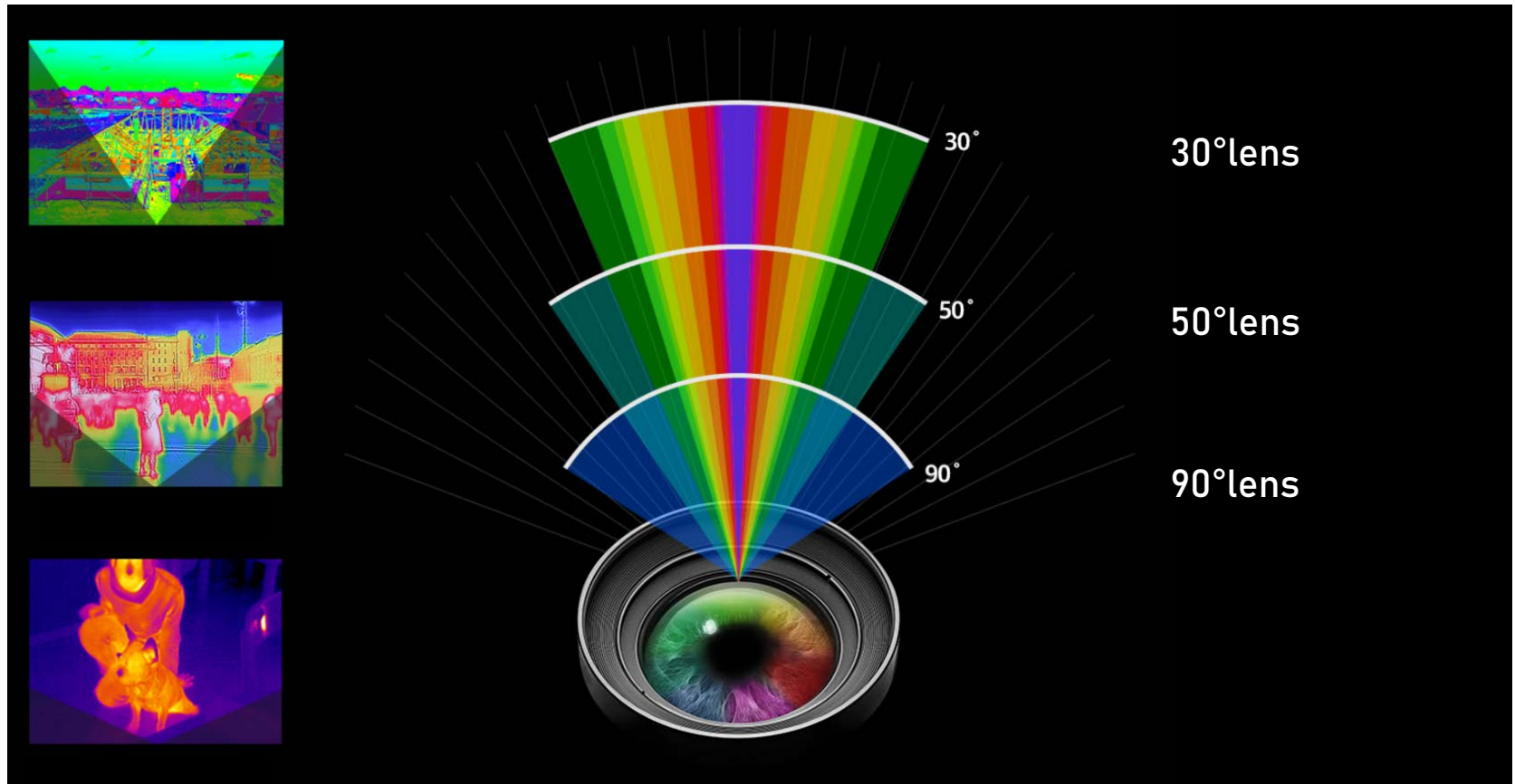
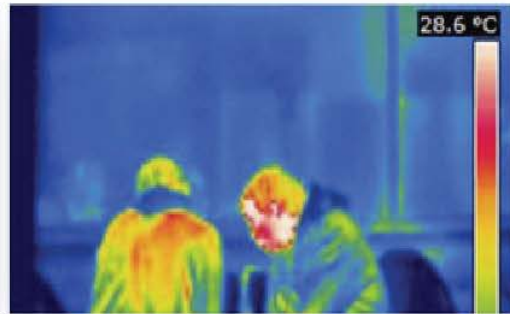
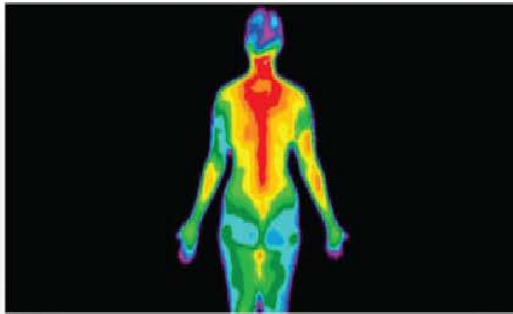
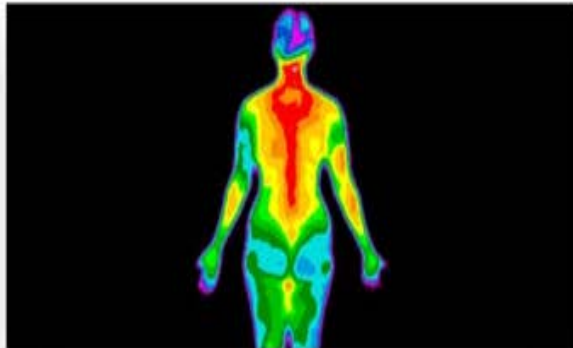




Image					Remark
<b>Brand</b>	SELKEEP	F***	F*****	F****	
<b>Brand country</b>	Republic of Korea	US	China	US	
<b>Margin of relative temp error</b>	± 0.3°C(@30°C)	± 2°C / ± 2%	± 2°C	± 2°C / ± 2%	
<b>Temperature measurement unit</b>	± 0.1°C (100mK)	± 0.045°C (45mK)	± 0.08°C(80mK)/ ± 0.1°C(100mK)		<b>Mostly for industrial use, not suitable for human body heat detection</b>
<b>Resolution(Pixel)</b>	80 X 60	320 X 240	160X20 / 80X60	120X90	<b>Not require high resolution for Body temp detection</b>
<b>Measurement distance</b>	MAX : 7m Recommend : <3m	MAX : 10m Recommend : 3~5m	MAX : 10m Recommend : 5m	MAX : 7m Recommend : 2~4m	
<b>Measuring range</b>	-20°C ~ 100°C	-20°C ~ 650°C	-20°C ~ 150°C	-20°C ~ 150°C	
<b>Streaming, editing</b>	PC S/W	PC S/W, Self Streaming	Self Streaming	PC S/W	<b>Settings can be changed using S/W UI</b>
<b>Alarm (image / sound)</b>	O / O	O / X	X	O / X	<b>The only low-cost type that provides a siren function</b>
<b>Number of color expressions</b>	3	5	15	6	
<b>Data</b>	USB	USB /VIDEO/WiFi	USB	USB	
<b>Frame</b>	20FPS	60FPS			
<b>Storage</b>	PC Storage(Image)	PC Storage (Image/Video)	Smart Phone	Micro SD	
<b>LCD Display</b>	X	O	O	O	
<b>Power</b>	5V DC(USB)	Charger(100~220V)	Charging Battery	Charging Battery	
<b>OS</b>	Window 10	Window	Cloud		
<b>Remark</b>	Human body heat detection camera	Industrial	Industrial	Industrial	
<b>Retail price</b>	Lowest	US 8,925.00	US 3,500		

Use in various settings: Offices, Healthcare Facilities, Schools, Public Gatherings



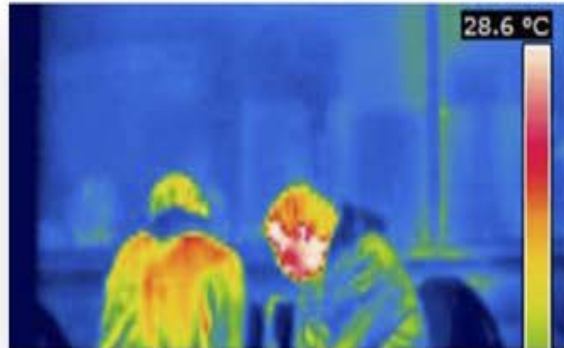


**detecting a patient with a flu virus (H1N1, Mers, flu etc)**

**place :** clinic/pharmacy, school, kindergarten, restaurant, company,

**customer :** Telco, owner of business, B2B dealer..

**benefit :** early detection of infectious patients/carrier



**for health care for the elderly, children, patient**

**place :** kindergarten, baby playroom, nursing house(parents/maternity),

**customer :** Telco., owner of kindergarten/baby playroom/nursing house

**benefit :** early detection of infectious patients/carrier & protection of portrait rights



**at a large public place**

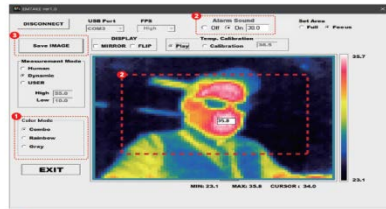
**place :** air port (immigration office, departure gate, boarding place), station (train, subway)

**customer :** the officer of airport/airline/train/subway/bus

**benefit :** early detection of infectious patients/carrier with low expense

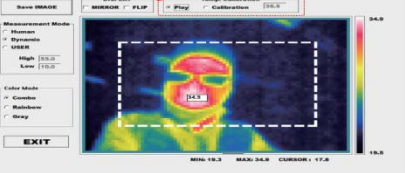
## Includes simple step by step installation guide resources

### Manual – PC Program



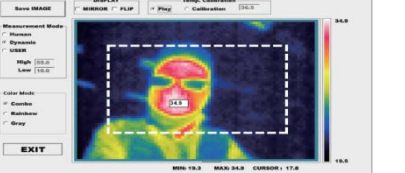
- 1 Select color mode
- 2 Type Alarm temperature and press Enter. Alarm signal will change to Red with sound if it finds higher temperature than alarm temperature.
- 3 Click Save Image to save image manually.

### Manual – PC Program



- 1 Temperature Calibration
    - Click Calibration, image and max temp stops.
    - Type the preferred temp (first decimal point) > Enter Key > max temp will be changed.
    - Click Play, temperature will be set to preferred temp.
- ⚠ Please do calibration frequently since reference temperature of thermal camera can be changed by ambient condition.

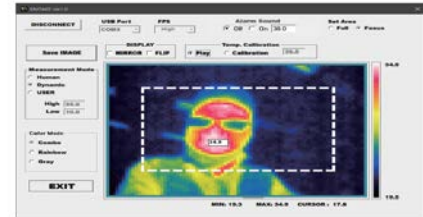
### Manual – PC Program



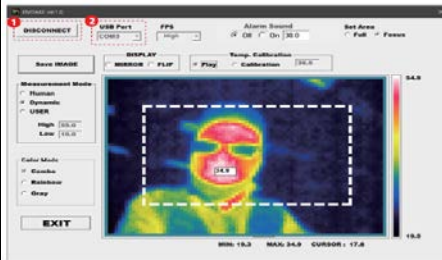
- 1 Select Focus Area => Max, Min, Alarm Temp will be set within this Focus Area
- [Notice] Recommended Setting Mode  
 – Measurements Mode : Human      – Temp. Calibration : 36  
 – Color Mode : Combo                – Alarm Sound : 38

### Manual – PC Program

1. Download MT30 PC Viewer.zip from www.emtake.com
2. Unzip PC Viewer.zip
3. Exute Emtake PC Viewer vx,x.exe

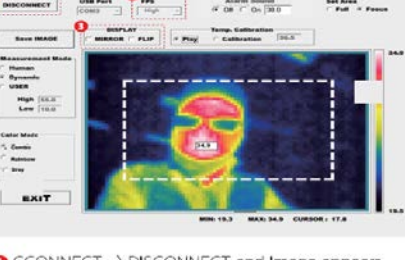


### Connect USB Camera and PC with USB cable



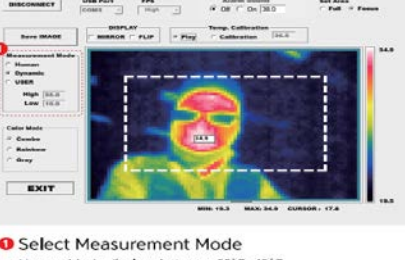
- 1 USB Port Appear, Select the COM# Port
- 2 Click CONNECT button

### Manual – PC Program



- 1 CCONNECT -> DISCONNECT and Image appears
- 2 Select Frame Rate
- 3 Select Display Mode

### Manual – PC Program



- 1 Select Measurement Mode
  - Human Mode displays between 25°C~42°C.
  - Dynamic Mode displays between Max Temp ~ Min Temp.
  - In USER Mode, user can set Max temp and Min temp.

### Installation



- 1 Install the camera for monitoring position.
- 2 Connect camera and PC with USB cable (micro 5 pin).
- 3 Execute PC program Emtake PC Viewer vx,x.exe.
- 4 You can see thermal graphic image with temperature.
- 5 It takes 5~15 minutes for stability.

### PC Driver Installation

1. Download MT30 Driver.zip from www.emtake.com
2. Unzip MT30 Driver.zip
3. Exute VCP\_V1,4,0\_Setup.exe



- If Emtake PC Viewer can not find the com port, install manually in below.
- (C:) Program Files(x86)
    - 313Microelectronics
      - Software
        - Virtual comport driver
          - Win7
            - Choose win7 >> windows 7 and windows 10
            - Choose win8 >> windows 8



6EC5-96BF-8BDC-B3A6

## Supplier's Declaration Of Conformity

**Type of equipment: Thermography Camera**  
**Basic Model name: MT30**  
**Variant Model name: ENK111BLK, ENK121WHT, ENK111WHT, ENK121BLK**  
**Test Report No. : UCSFC-2002-0009**  
**Test standards: FCC CFR 47 Part15 Subpart B, Section 15.101**

It's herewith confirmed to comply with the requirements of FCC Part 15Rules.  
 Operating is subject to the following two conditions.  
 (1) This device may not cause harmful interference and, (2) This device must accept any interference received, including interference that may cause undesired operation.

The above equipment was tested by UCS testing laboratory for with the requirements of FCC Rules and Regulations. The results of testing in this report apply to the product / system which was tested only.

The following applicant / manufacturer are responsible for this declaration.

**Applicant** : Emtake Ltd.  
**Address** : No.1312, H BUSINESS PARK B, 25, Beobwon-ro 11-gil, Songpa-gu, Seoul, Republic of Korea  
**Contact** : Jason, Cho (E-mail: jason@emtake.com, Tel: +82-70-7526-6505)

**Manufacturer: Emtake Ltd.**  
**Address** : No.1312, H BUSINESS PARK B, 25, Beobwon-ro 11-gil, Songpa-gu, Seoul, Republic of Korea

**Manufacturer**

Jason, Cho /  
 (Quality Manager / Signature)  
25 Feb. 2020  
 (Date)

**Test Laboratory**

I.Y. Jeong  
 (Technical Manager)  
25 Feb. 2020  
 (Date)

**Emtake Ltd.**  
 No1312, H BUSINESS PARK B, 25, Beobwon-ro 11-gil, Songpa-gu, Seoul, Republic of Korea  
 Tel : +82-70-7526-6505  
 This test report shall not be reproduced except in full, Without the written approval.

## 방송통신기자재등의 적합등록 필증

Registration of Broadcasting and Communication Equipments

상호 또는 성명 Trade Name or Registrant	(주)엠테이크
기자재명칭(제품명칭) Equipment Name	열화상 카메라
기본모델명 Basic Model Number	MT30
파생모델명 Series Model Number	ENK111BLK, ENK121WHT, ENK111WHT, ENK121BLK
등록번호 Registration No.	R-R-Y2H-MT30
제조사/제조(조립)국가 Manufacturer/Country of Origin	(주)엠테이크 / 한국
등록연월일 Date of Registration	2020-02-24
기타 Others	

위 기자재는 「전파법」 제58조의2 제3항에 따라 등록되었음을 증명합니다.  
 It is verified that foregoing equipment has been registered under the Clause 3, Article 58-2 of Radio Waves Act.

2020년(Year) 02월(Month) 24일(Day)

국립전파연구원장



Director General of National Radio Research Agency

※ 적합등록 방송통신기자재는 반드시 "적합성평가표시" 를 부착하여 유통하여야 합니다.  
 위반시 과태료 처분 및 등록이 취소될 수 있습니다.

[Youtube Link to Video](#)



**MSRP \$1990**

**Special Discounts Available for  
Frontline Facilities, Government, Non  
Profit and other essential  
organizations**

## US Corporate Office

630 S Jefferson St Suite A

Placentia, CA 92870

Office: 800-339-0238

Fax: 877-465-7007

[www.AlliableMedical.com](http://www.AlliableMedical.com)

[Customersupport@AlliableMedical.com](mailto:Customersupport@AlliableMedical.com)