
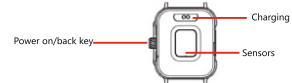


Download the App
Scan the QR code to download and install the App or Google play store from Apple app store.



Introduction to UWATCH D09



Note: Press and hold the power-on key to turn the watch on

Watch activation

Before you use the watch for the first time, you need to charge the watch by connecting the magnetic charger to the contact port on the back of the watch. You can use the charging cable with an adaptor or using the USB port on your computer to charge the device.



Connecting UWATCH D09

This watch has dual Bluetooth connection mode, connect the watch as follows:

1.APP-end connection (for data transfer)

Open the DafitAPP and click "Binding Watch" to find the UWATCH D09. Press connect, the watch will now be connected.

unosounds.com

2: Mobile phone connection (for calls)

1) Turn on the audio icon on the watch: swipe down on the main interface of the watch, on the control center, tap the audio call icon, turn on the audio status as shown:
2) Go to the mobile phone bluetooth search page, search for UWATCH 1+, connect the icon, the watch is successfully paired as shown:



PAIRED DEVICES



After the watch is successfully paired, the watch will automatically connect to the phone, the data will be synchronized, by dragging the interface screen downward.

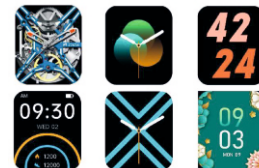
Introduction to the calls function



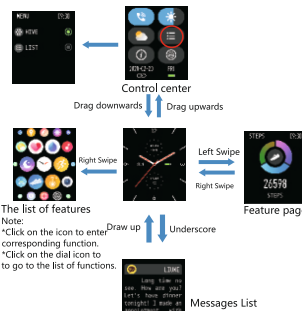
When the watch is connected to your phone, you can use your watch to dial to make calls and answer calls, you can also answer calls from your phone on your watch using the speaker option. You can also view your watch's call history. When using the call function, you need to make sure that the watch is connected to the phone.

unosounds.com

Choose Your Favourite Picture for a wallpaper



UWATCH D09 operating instructions



The list of features Note: *Click on the icon to enter corresponding function. *Click on the dial icon to go to the list of functions.

unosounds.com

Introduction to UWATCH D09 functions

STEPS 09:30
Motion tracking
The watch records and displays the number of steps you walk each day, the calories burned and distance covered. More detailed analysis and data can be viewed upon scrolling down on the steps interface.

SLEEP 09:30
Sleep monitoring
The watch records the length of your sleep, it also records your sleep patterns wether deep or light. Additional data can be viewed upon scrolling down on the sleep interface.

HR 09:30
Heart rate monitoring
The watch records and displays continuous heart rate through the day. Click on the heart rate interface to measure the current heart rate. More data/records can be viewed upon scrolling down on the HR interface.

PLAYER 09:30
Music control
When connected, the watch can control the music player directly to play, pause & skip your tracks.

unosounds.com

SPO2 09:30
Blood oxygen monitoring
Click on the oxygen interface to measure the current oxygen value. More detailed analysis and data records can be viewed upon scrolling down on the SPO2 interface.

WEATHER 09:30
Weather information
The weather interface shows the current weather, air quality and the next days expected conditions. The watch must be connected to the phone to get updated weather information.

TRAINING 09:30
Exercise modes
8 sports modes available: Walking, running, cycling, basketball, football, badminton skipping. Detailed analysis, data/records can be viewed upon clicking the the mode selected.

BP 09:30
Blood pressure
Click on the blood pressure interface to measure the current blood pressure value. More data/records can be viewed upon scrolling down on the BP interface.

unosounds.com

Drainage:
- The watch has a water resistant system, during daily use, water and liquids may accidentally seep into the watch, the water can be discharged through the drainage operation. NOTE*excessive water /liquid damage will make the warranty void.

FAQ
1. Why my smart watch disconnects automatically from my phone when I switch the screen off?
- choose the self start up option in the app & un restrict the app to operate in the background while the phone display is locked from the settings on your phone.

2. Why I don't receive messages?
- From the app allow the notifications (click on allow)

3. Can I take a hot bath with the watch on?
- Due to the high temperature it is not recommended doing that.

4. Can I swim with the watch?
- The smart watch is water-resistant, not waterproof. We highly recommend that the watch is removed while performing tasks and activities involving water & fluids, if some liquids do splash on the watch, use a dry cloth to avoid liquid related damages. * Liquid related damage to the watch will void the warranty

unosounds.com



USER MANUAL



UWATCH D09
unosounds.com

Supports MULTIPLE exercise modes

unosounds.com

60Hz high refresh frequency
Smooth drag screen effect
320PPI
280*320

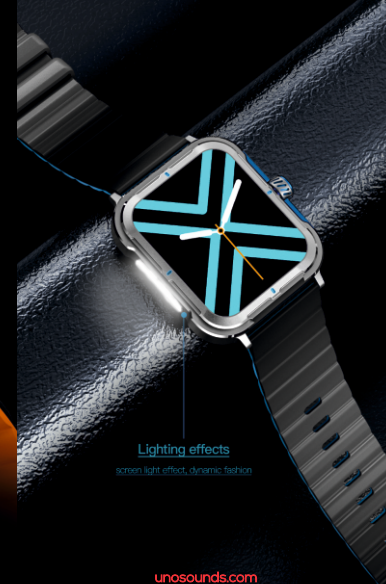
1.9-inch
HD screen
32-bit color
High color reduction



Rotate the side button to directly switch pages or scroll up and down or left and right, more convenient and fast, to prevent accidental touch



unosounds.com



Precautions

- Do not charge using voltage greater than 5V, direct current greater than a 2A adapter charge up to 2-3 hours, do not leave the watch to charge overnight.
- Do not touch with wet hands when setting the watch for charging.
- This is electronic monitoring device DO NOT use as a medical reference. Data is for approximate reference only.

unosounds.com