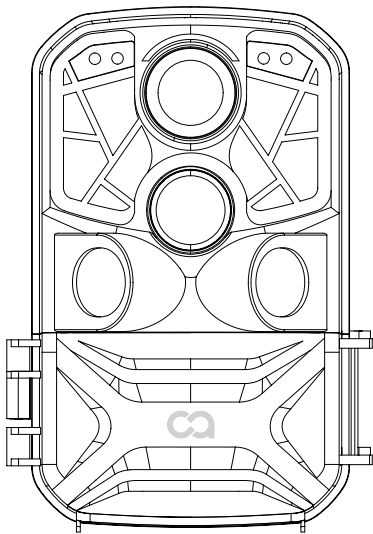




TRAIL CAMERA H5



User Manual

Service email: support-us@cooau.com



Scan "Cooau.com" QR
code to contact us



Follow @Cooau.Official on
Facebook



www.cooau.com



[Cooau_official](https://twitter.com/Cooau_official)



[Cooau_official](https://www.youtube.com/Cooau_official)



[Cooau.Official](https://www.facebook.com/Cooau.Official)



[Cooau_official](https://www.instagram.com/Cooau_official)



[/u/Cooau](https://www.reddit.com/u/Cooau)

Dear Customer,

We sincerely thank you for choosing our brand products. You are one of our most valuable customers and it is our honor to serve you.

Hope you can feel the excellent products and satisfactory after-sales. We will continue to work hard to meet your product needs and expectations in the future. At the same time, your firm support and patronage are our driving force.

Your suggestions and feedback are our precious wealth. To express our gratitude, we will soon launch a series of new products for valued customers like you. You can find a suitable one among the brand products.

Thank you again for choosing COOAU. Please note that items purchased from COOAU have a **1-year warranty**. Please contact our after-sales support department to let us know if there is **any problem** we can do to help you further.

Contact methods: **support-us@cooau.com**

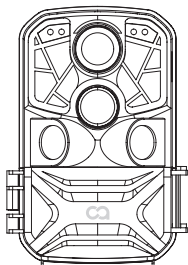
Kind Regards,
COOAU Support Team

CONTENTS

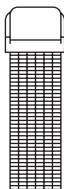
1. PACKING LIST.....	1
2. INTRODUCTION	2
2.1 Features of WIFI Trail Camera.....	2
2.2 Application Scenarios of Wildlife Camera	2
3. APPEARANCE	3
4. PREPARING THE CAMERA.....	5
5. USING THE CAMERA AND SETUP MENU	7
5.1 Using the Camera.....	7
5.2 Setup menu	8
6. WIFI and APP.....	12
7. INSTALL THE CAMERA IN THE FIELD	16
8. MOUNTING	17
9. ENTER ON / LIVE MODE.....	18
10. TECHNICAL SPECIFICATIONS.....	19
11. IMAGE / DATA OUTPUT	20
12. SIMPLE TROUBLE SHOOTING	20

1. PACKING LIST

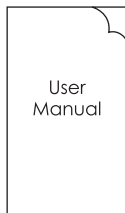
Please carefully unpack camera and check that below accessories are contained in the box.



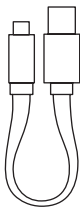
1



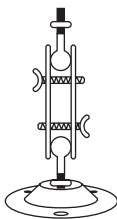
2



3



4



5



6

- 1. Wildlife Camera x 1
- 2. Mounting Belt x 1
- 3. Instruction Manual x 1

- 4. USB cable x 1
- 5. Wall Mount x 1
- 6. Screws x 3

2. INTRODUCTION

The Wildlife Camera is a surveillance camera with infrared sensor for recording and observing wild animals. With highly sensitive PIR sensors, it can detect sudden changes to the ambient temperature and motion within an evaluation area. And capture every act of the animals.

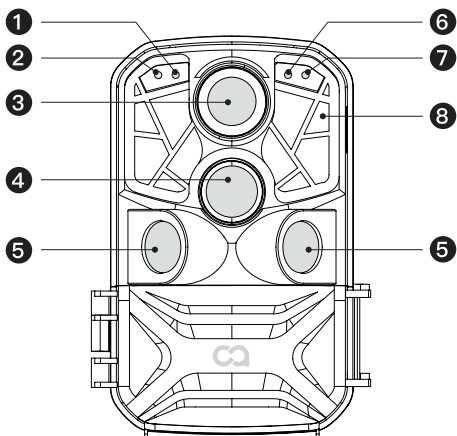
2.1 Features of WIFI Trail Camera

1. CMOS sensor.
2. 24 Megapixels photo and 4K Ultra HD video.
3. 6.6cm (24), color TFT LCD; 320x240 pixels
4. Full automatic IR filter.
5. Trigger speed: Approx. 0.2 second.
6. Setup Serial No. to record the position.
7. Time, date, temperature, phase and Serial No. will be stamped on the photo.
8. Password protection.
9. Power indicating.
10. Built-in test function about environmental temperature.
11. Built-in microphone and speaker.
12. Mini USB 2.0 interface.
13. Water proof standard IP66.
14. Extremely low power consumption in standby operation providing extremely long operating time, lasts 6 months with 8 pcs batteries when taking 50 pics photos every day.

2.2 Application Scenarios of Wildlife Camera

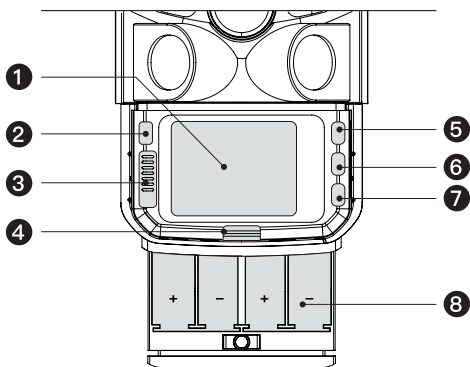
1. Camera trap for hunting
2. Animal or incident observation.
3. Motion triggered security camera for domestic, office or public use.
4. Any internal and external surveillance.

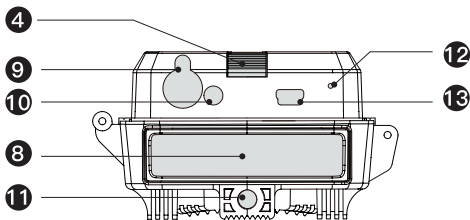
3. APPEARANCE



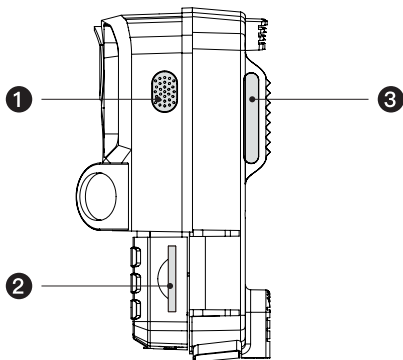
1. Light Sensor
2. Side PIR Indicator
3. Lens
4. Main PIR Sensor

5. Side PIR Sensor
6. System Indicator
7. Main PIR Indicator
8. IRLEDs.





- | | |
|-------------------------|-------------------|
| 1. Screen | 8. Battery Case |
| 2. Mode | 9. DC Power Input |
| 3. OFF/SETUP/ON | 10. AV Out |
| 4. Battery Case Release | 11. Mount Screw |
| 5. UP | 12. Microphone |
| 6. OK | 13. Mini USB |
| 7. Down | |



1. Speaker
2. SD Card Slot
3. Strap Slot

1. The monitor is only switched on in the SETUP mode for changing menu settings or viewing existing photos and videos.
2. A SD memory card must have been inserted into the memory card slot to save photos and videos.
3. Using the mini USB connection (USB 2.0), the camera can be connected to a computer to download photos and videos.
4. Using the mode switch, the three operating modes: OFF, SETUP and ON can be selected.

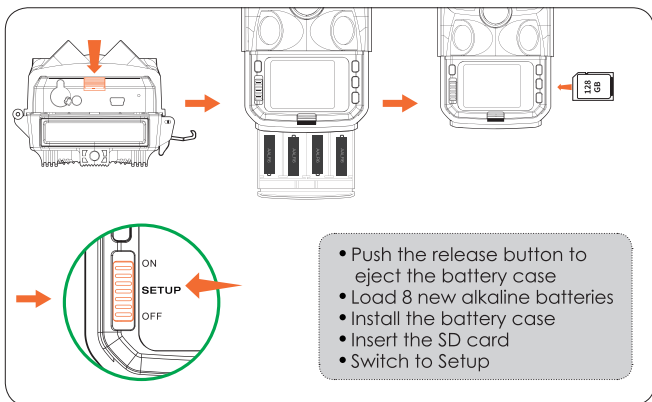
4. PREPARING THE CAMERA

Note:

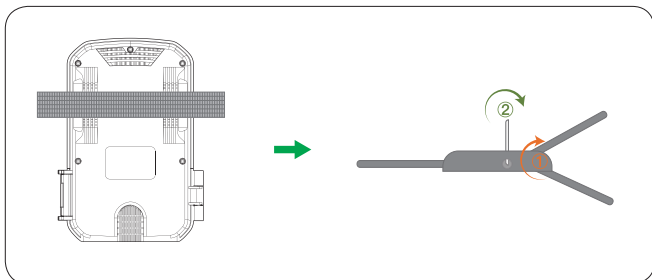


1. SD memory cards up to a capacity of 128 GB are supported.
2. For best using experience , we recommend using 8 alkaline batteries to power the camera , lithium-ion rechargeable batteries are not recommended because rechargeable batteries have lower voltage output and poor performance under low temperature.
3. The camera must be inserted 4 or 8 x 1.5V AA batteries . Do not use new and old batteries together. DC interface need 6V/1.5A adaptor with 3.5 mm (outer diameter)*1.3 mm (inner D) plug head.
4. Insert CLASS 10 or higher class micro 128GB SD card (CLASS 10 is recommended) . Prior to insert into memory card, ensure that the lateral write protection on the memory card has not been locked.
5. Switch on the camera. Three switches: power off (OFF) . setup menu (SETUP) and live mode (ON).
6. New memory card is recommended to be formatted when using (as below described).
7. Please note that the camera will power off when power is very low.

How to start:



Assembly with Strap:



5. USING THE CAMERA AND SETUP MENU

5.1 Using the Camera

1. Operating Buttons

Keys	Functions
Power Key	Pull Switch: 1. Off: Power off . 2. Setup: Setting and test mode. 3. ON: Working mode.
Mode Key	1. Short press to switch back and forth between menus, taking photos, recording videos and playback. 2. In the submenu, short press to return to the previous menu.
UP Key	Select UP.
OK/SHOT	1. In the video or photo taking interface, short press to shot. 2. Under the menu settings, shot press to confirm as OK.
Down Key	1. Select DOWN 2. In playback mode, long press the button to pop up the "delete menu".
Battery Case Eject	Press to eject the battery case.

2. The Power Switch key is used to control the camera working status.

OFF:

The camera is completely off, only in this mode, you can unplug the memory card, replace the batteries.

Setup:

Under this mode, the camera screen is on, you can manually record video or take photos, you can also review the recorded files or change the setup options according to your own reference.

When the camera is in Setup mode, the PIR sensors are on, when they

are triggered, the PIR indicators LED will flash. But in this mode, the camera will not take photos or record video.

ON:

When the camera is switched from SETUP mode to ON mode, it will enter standby with low power consumption, screen display will turn off and button operation will be disabled. The camera will respond to the PIR sensors only. It will turn on and take photo or record videos when the PIR sensor is triggered, then return to standby afterwards.

5.2 Setup menu

Camera Mode

Photo, Video, Photo+Video, Select whether photos or videos should be taken when motion is detected. When in the "Photo+Video" mode, the camera first takes a set number of photos prior to recording a video.

Photo Resolution

24MP / 20MP / 16MP / 12MP / 8MP / 5MP / 3MP / 1MP Available

Select the desired resolution for photos. A higher resolution produces a somewhat better photo quality but results in larger files requiring more space on the memory card.

Multi-shot

1P/2P/3P available

Choose the photo count to be taken when the camera get triggered.

Video Resolution

3840*2160P, 2688*1520P, 1920*1080P, 1280*720P, 720*480P, 640*480P

Select the required video resolution.

A higher resolution produces higher quality videos but results in larger files requiring more space on the memory card. Videos are recorded in MP4 format which can be played back on most video devices.

Video Length

Set the length of the video (3-59 seconds or 1-5 minutes). The longest recording period is 5 minutes.

Specify the duration of a video recording when the camera is triggered automatically. The recording period for videos is not limited in the SETUP mode,

- In the SETUP mode in daytime and at night.
 - > When recording manually, the camera will stop automatically after 29 minutes' recording;
 - > When recording manually, the camera will stop when one video clip size gets to 4 GB;
 - > When recording manually, the camera will stop when the memory card is full or low power.

- In live mode (ON) at night the camera will work automatically as per the video length setting. For low power, it will stop recording in advance.
- Please set the shorter video length to guarantee a long-time usage of batteries.

NOTICE:

Video recording will consume significantly more power than taking photo, especially at night with IR LED on. Please set a shorter video length to ensure battery life.

The power consumption of 10 seconds video recording is the same as 150 photos

Audio recording

You can choose to turn it on or off. When it is turned on, the recorded video has sound. When it is turned off, the recorded video has no sound.

PIR Interval

5-59 seconds or 1-60 minutes

the longer the selection time, the less the shooting time, and the PIR will not do the shooting processing during sleep.

Select the shortest period for the camera to wait before it reacts to the successive triggering of the main sensor after an animal has first been detected.

The camera does not record any photos or videos during the selected interval. This prevents the memory card from being filled with unnecessary shots.

- When the shot lag is short, and the camera shooting frequency would be high, there would be high consumption of the power. It would affect the usage days of the batteries.
- On the opposite, if the shot lag is long, it would be a lower consumption of power to guarantee a long-time usage.

Side PIR sensors

It can be set to open or closed. Turn it on to sense movement on both sides. And turn it off when side sensors are not required.

PIR sensors Sensitivity.

High / Medium / Low

- Select the sensitivity according to the applied conditions.
- Select "High" For interior areas and environments with little interference.
- Select "Medium" for exterior areas and environment with a normal amount of interference.
- Select "Low" for an environment with a high level of interference.

Monitoring period of time (Working timer)

Set the camera to work within the working time, select "Working timer", then press the OK button, select "on", you can set the start time and end time of the camera work. After the setting is completed, you can record the whole process of shooting you want. You can set the hour, minute and second (Note: When this function is turned on, the PIR primary and secondary sensors will not work).

Time Lapse

Press "ON" to set the time interval, and set the values of Hr, Min and Sec. For example, if the process of flowers blooming has to be recorded, time lapse can be used. The camera automatically takes pictures in every set time intervals.

Language

Select the menu language.

English / French / Spanish / Portuguese / German / Italian / Japanese / Chinese available.

Date/Time

Three options for date display.

DD / MM / YY

MM / DD / YY

YY / MM / DD

Time Format

12H/24H

Choose 12 hours system or 24 hours system.

Photo Stamp

select time Date: the captured video and picture will have time and date watermark displayed.

Select date: the captured video and picture will have date watermark displayed.

Select off: all videos and pictures taken will not have watermark displayed.

Password Setting

Setup a startup password to protect the camera.

Beep Sound

ON / OFF

Turn on/off button operation beep sound.

Format

Format the memory card.

Camera ID

Set a unique name for the camera and a 4-digit number or letter combination before 0-9 and A-Z.

(**Note:** you need to turn on the image stamp function at the same time to display the device name in the video and image watermark)

Reset Settings

Cancel / OK. Press "OK" to reset the camera settings to the default values.

Auto WIFI Off

Setup the time so the camera will automatically turn off WIFI when it is not connected to a smart phone within the preset time.

WIFI SSID

The WIFI SSID name can be modified, and it will be displayed when WIFI is opened after modification. The mobile phone can search the WIFI SSID.

WIFI Password

The WiFi password of the camera can be set. After the setting is successful, the phone can only connect by entering this password when connecting to the camera.

Version

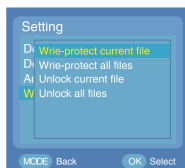
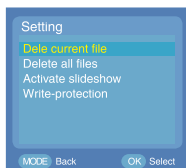
Check firmware version.

Playback mode

- Take down the hunting camera from the position of installation. Set the switch from "ON" to "SETUP". Press the MODE button to switch to playback MODE. Press the up/down button to view the videos and pictures captured. Press OK to stop playback of video files, and press the MODE button to return to the playback case table.
- Long press the "DOWN" button on the playback interface to enter the setting menu.
- Delete the current file: enter this function to delete the current picture or video in the camera memory card. In playback mode, press and hold the button to delete the current file, press up / down to select. Cancel and delete, and press OK to confirm.
- Slide show: with this function, the pictures of the memory card can be played in the form of slide show. Each picture is displayed for 2 seconds. Press OK to stop the slide show.
- Write protection: use this function to prevent accidental deletion of documents.

Select "current document anti write" "all documents anti write" to prevent the memory card document from being accidentally deleted.

Select "Remove Anti write of current document and all documents" to remove the protection of related documents.



6. WIFI and APP

Bluetooth remote control opens WIFI and connects to APP

1. Before using the WIFI function, For Android smart phone, please go to Google Play and search "Hunting Camera" to download and install the APP. For IOS smart phone, please go to Apple Store and search hunting Camera" to download and install it.
2. Mobile phone scan the QR code download the APP "Hunting Camera"

Android

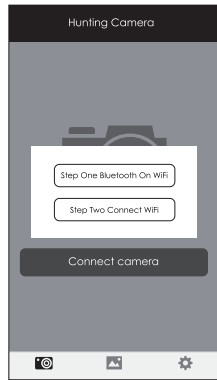
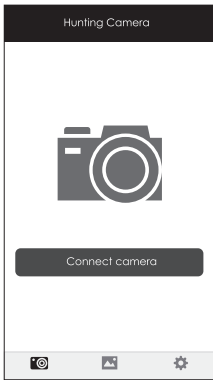


iOS



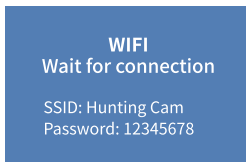
3. Turn on bluetooth

▲ Firstly, turn on the bluetooth function of your mobile phone or enter the app "Hunting Camera". Then click "The first step is to turn on Bluetooth WIFI", it will prompt "Turn on Bluetooth to allow "Hunting Camera" to connect accessories", select "Settings" to jump directly to the phone's Bluetooth settings menu, and then turn on Bluetooth (Note: Bluetooth is off for this operation)



4. Turn on the WIFI

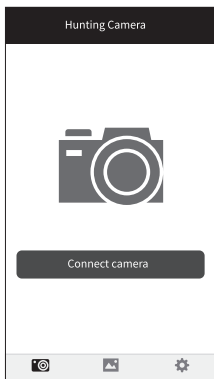
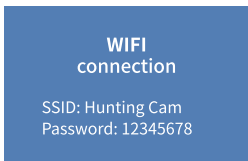
- ▲ Manually turn on WIFI: When SETUP mode is set, press 3S on the video or photo preview interface to turn on WIFI, and the indicator light will shine. The "WIFI" interface will be displayed on the screen as shown below:



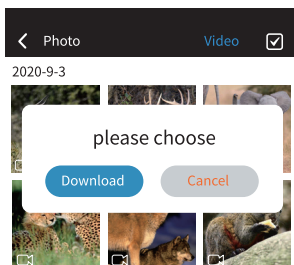
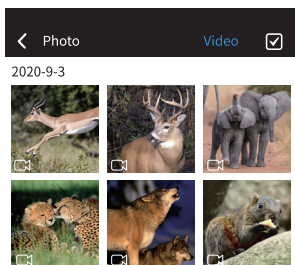
5. Bluetooth opens WIFI connect the camera:

- ▲ In SETUP mode or ON mode, click "Connect camera" at the APP on the phone. Click "Bluetooth opens WIFI at the first step". Enter the Bluetooth case table. Select the corresponding Bluetooth name, and the phone will automatically jump to the WIFI connection interface. Search for the WIFI name of the camera, and enter the original password: 12345678. After successful connection, you will see the interface on the camera. The APP will be work after click "back".

Note: after successful connection, the hunting camera will enter the screen protection state about 3 minutes; if you operate again, press any key on the camera, and the camera screen will light up again.



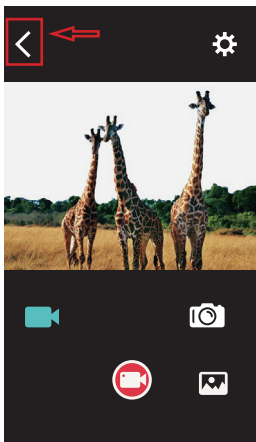
6. On the APP, you can preview the picture being taken in real time, record videos, take pictures, menu settings, file playback/download/delete. And download files can be viewed in the APP album, and can be deleted or shared individually.



7. To exit WIFI:

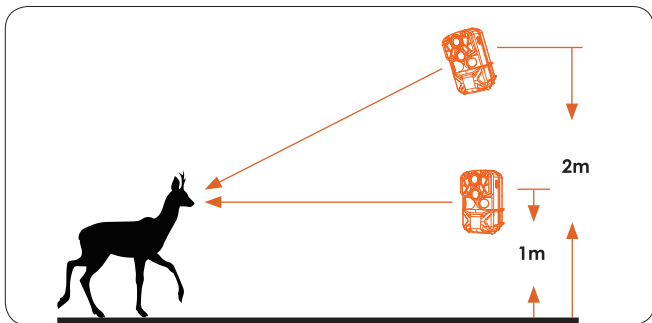
Method 1: Press the return button which on the top left of the APP (as shown in the picture) to prompt "Turn off the camera." Click "Cancel" will return to the APP interface. Click "connect the camera", then you can use the APP to continue. If you click "OK" then the APP and WIFI will Exit and close. And the camera will return to the preview screen also.

Method 2: Short press the "up" button on the camera to exit the WIFI. The camera will return to the video interface, and the indicator light will turn off. At the same time the APP will exit the connection screen synchronously.



8. After completing the use of the APP, you can exit it directly. Or enter the phone setting to turn off WIFI and Bluetooth. The camera will automatically switch to "ON (Monitor)" or "SETUP" mode afterwards.
9. Even if the WIFI on the camera is not turned off after usage. The WIFI function will automatically disconnect after reaching the default time. And return back to "ON (Monitot)" or "SETUP" mode.

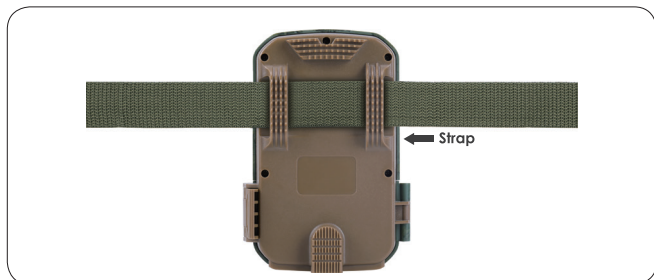
7. INSTALL THE CAMERA IN THE FIELD



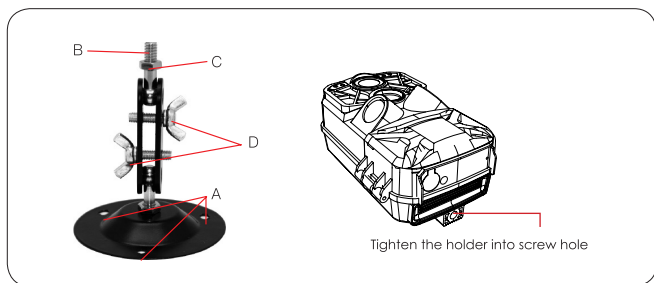
1. During alignment, use side motion sensors to help attain the desired observation results.
2. Align the camera as follows:
Fasten the camera to a tree or similar object at a height of 1-2 meters and align the camera to the desired direction. Then move slowly from one side of the target area to another. While doing this, monitor the motion displayed.
Operating Principle sensors. If it lights up in red, you have been detected by the front motion sensor. In this case, you can work out the best alignment for the camera.
3. The motion display only lights up when operating mode selector switch in the SETUP position and one of the motion sensors has detected movement. During normal operation, there will be no LED display in this area.
4. To ensure that the camera doesn't make unwanted recordings of irrelevant movements, it should not be set up in a sunny location or close to branches. The detecting range of the sensors is 120° . And the recording angle of the camera is about 120° .

8. MOUNTING

1. Using the Adjustable Web Belt.



2. Using the Tripod Socket



(A) Drilled holes
(C) Counter screw

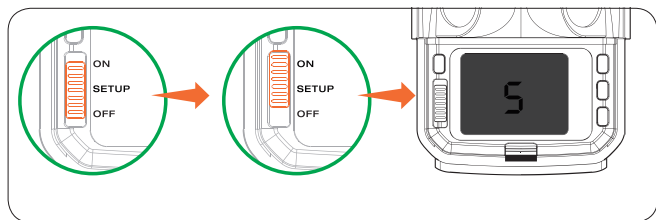
(B) Tripod bolt
(D) Hinge screws

9. ENTER ON / LIVE MODE

The standard application of the H5 Camera is the ON / Live mode. In this mode, photos are either triggered by movement sensors or at intervals according to the respective setting.

To set up the ON / Live mode, switch power to ON position. The red LED light will flash and the screen will show 5-second countdown before entering the ON / LIVE mode.

After the setup As soon as wild animals or other objects directly enter the detection area of the sensor zone, the camera starts to record photos and videos.



- In the daytime. IR LEDs will not light up. The photos and videos are in color.
- At night. IR LEDs will light up, and the photos and videos are in black and white.
- The Shot lag is 1 minute defaulted. The shot lag is 1 minute by default. 5-60s is optional.
- Please set up recording mode and related parameters before entering Live mode.
- When Flash Light is set to "Auto", the camera will adjust the brightness of IR LEDs automatically in low power.
- When shooting at night, the brightness will decrease automatically. Under low power, the power is not enough to light up the IR LEDs, shooting will stop at night.

Note: During nighttime, when the battery voltage is low, the current increases due to the infrared light. When the battery voltage is low, it may have a great impact on the stability of the machine. The machine cannot take photos / video or take very dark images, but it does not affect the daytime photo or video.

10. TECHNICAL SPECIFICATIONS

MODEL	H5
LCD SCREEN	2.0 inch
Mode	Photo, video, photo and video
Lens	F2.5
Photo resolution	24MP, 20MP, 16MP, 12MP, 8MP, 5MP, 3MP, 1MP
Video resolution	3840*2160P, 2688*1520P, 1920*1080P, 1280*720P, 720*480P, 640*480P
Menu language	French, Italian, Spanish, Portuguese, Dutch, Japanese, Danish and English
USB	USB 2.0
MIC	Support
DC	Aternal DC power supply (dc-6V/2A)
Photo/Video format	Support JPEG/AVI
SD Card	Expandable to 128GB
Speaker	Supported

11. IMAGE / DATA OUTPUT

1. TV connection

This camera can transmit video to external monitor or TV set. Please follow the instructions below

- Turn on the TV and connect the TV to the camera with AV data cable.
- Turn on the camera and switch to "setup".
- After successful connection, the camera will enter the playback mode, and the LCD screen will turn black. The pictures and videos.

2. Connect to the computer to export photos/videos

- After the camera is connected to the computer, you will find all the photos or videos are stored in the "DCIM \ 100media" directory in the removable disk. You can enter this directory to export files to your computer hard disk.

Note: Do not plug out the data cable or SD Card while in the middle of a download.

12. SIMPLE TROUBLE SHOOTING

The camera will not turn on	<ol style="list-style-type: none">1. Please check whether the batteries are installed in proper way.2. Check if the battery capacity is low or exhausted. If so, please replace by new batteries.
The camera turns off automatically	<ol style="list-style-type: none">1. Please check whether the battery capacity is low or exhausted. If so, try to change new batteries for outdoor using or connect AC adapter for indoor using.2. Please check if SD card is full. If so, transfer images and videos to your computer or delete some files in the Replay Mode.

<p>It shows 'SD card Error'</p>	<ol style="list-style-type: none"> 1. Please ensure that SD card is with class 10 standard or higher level. 2. Please use the camera to format SD card at the first time.
<p>Videos are choppy or jumpy when played on a computer</p>	<ol style="list-style-type: none"> 1. Try to use different media players such as VLC player. 2. Ensure AVI format Video clip can be played on your computer.
<p>The image is not clear</p>	<p>Please ensure that you have removed the protective films on IR LEDs and lens before using.</p>
<p>The camera does not take images or record videos</p>	<p>Check if the memory of SD card is full, transfer images or videos to your computer or delete some files in the Replay Mode.</p>

Note: Specification could be subject to modification due to updating. Please regard the actual product as the standard form.

Please email us for better solution
instead of returning any unqualified product to Amazon

support-us@cooau.com

THANK YOU



My Moment My Passion