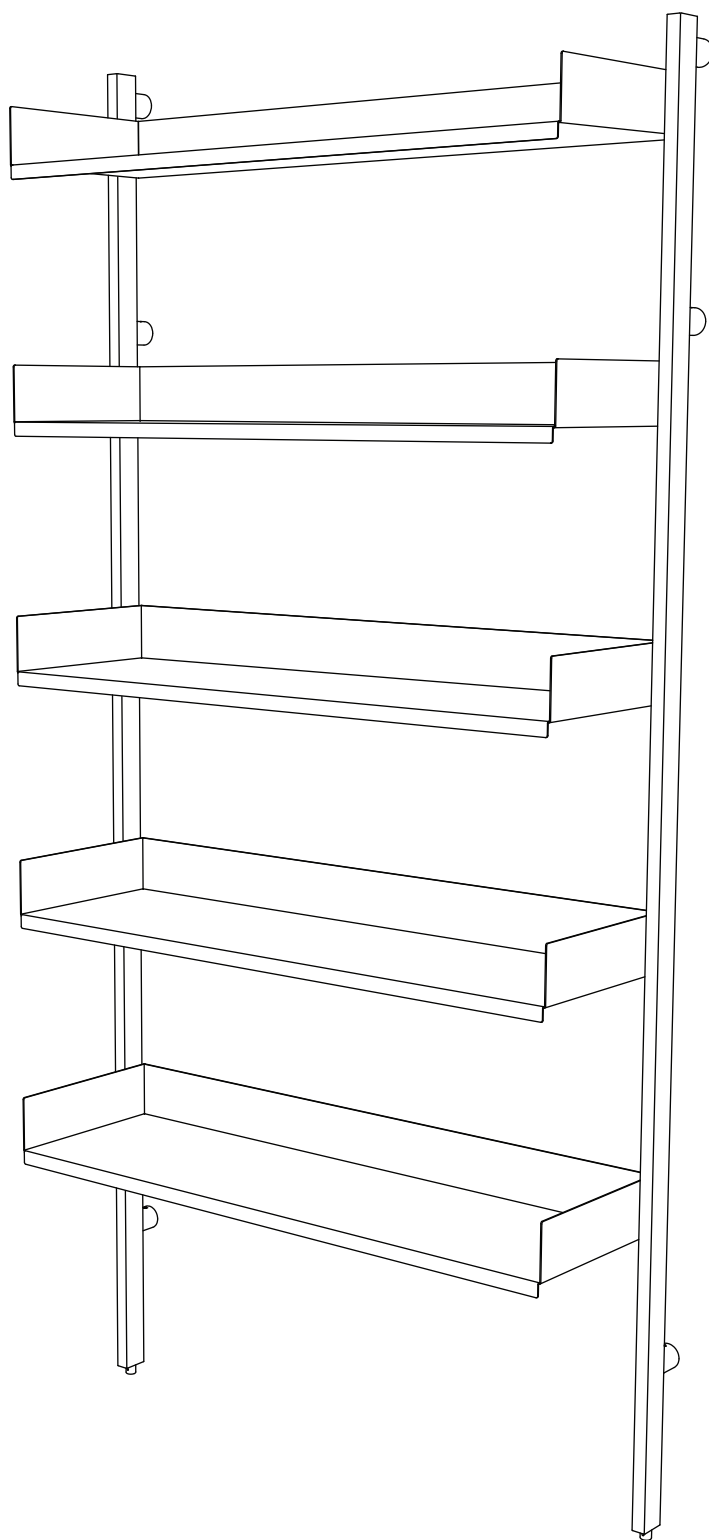


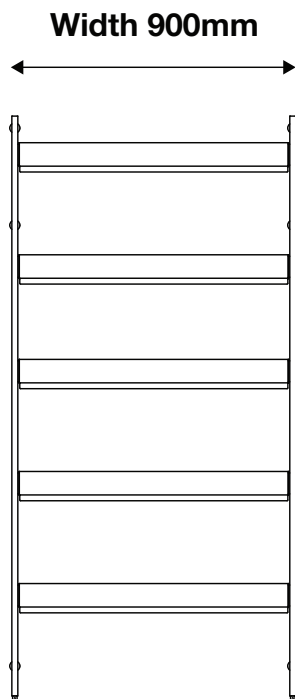
Slot Shelving



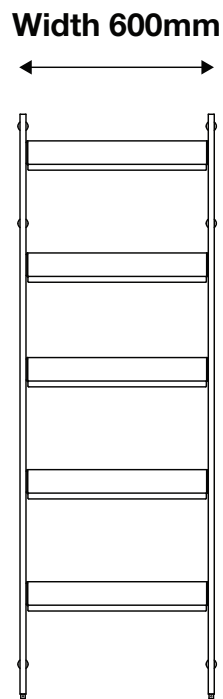
Configurations

The shelving system comes in four different assembly options as shown below, these are designed to suit a wide range of interiors.

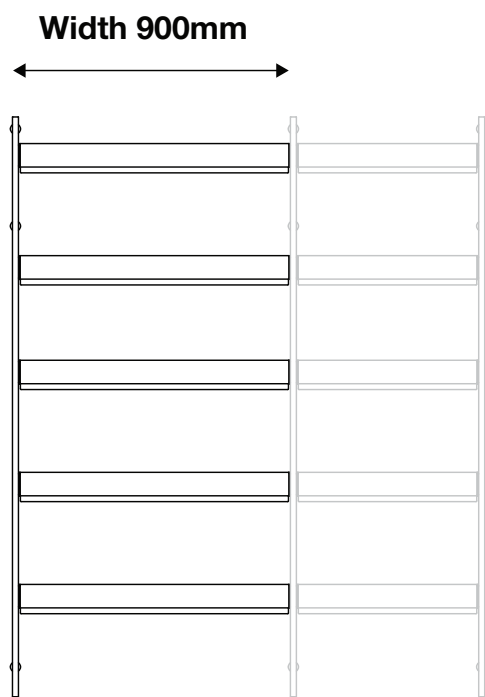
Please note: rawl plugs and screws are not included.



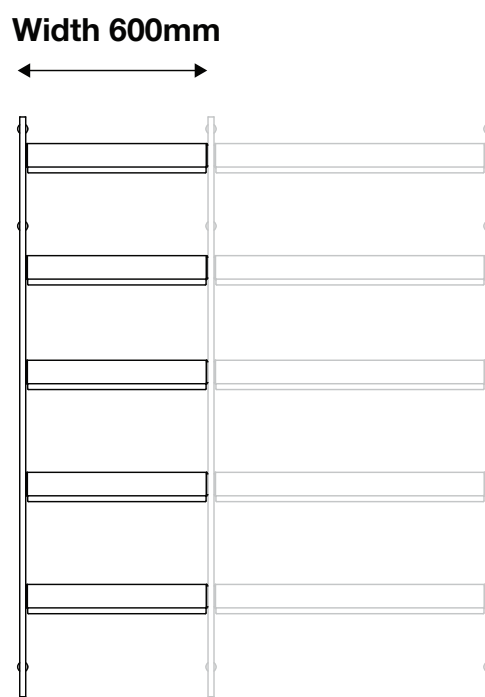
Single 900 system



Single 600 system



Extension 900 system

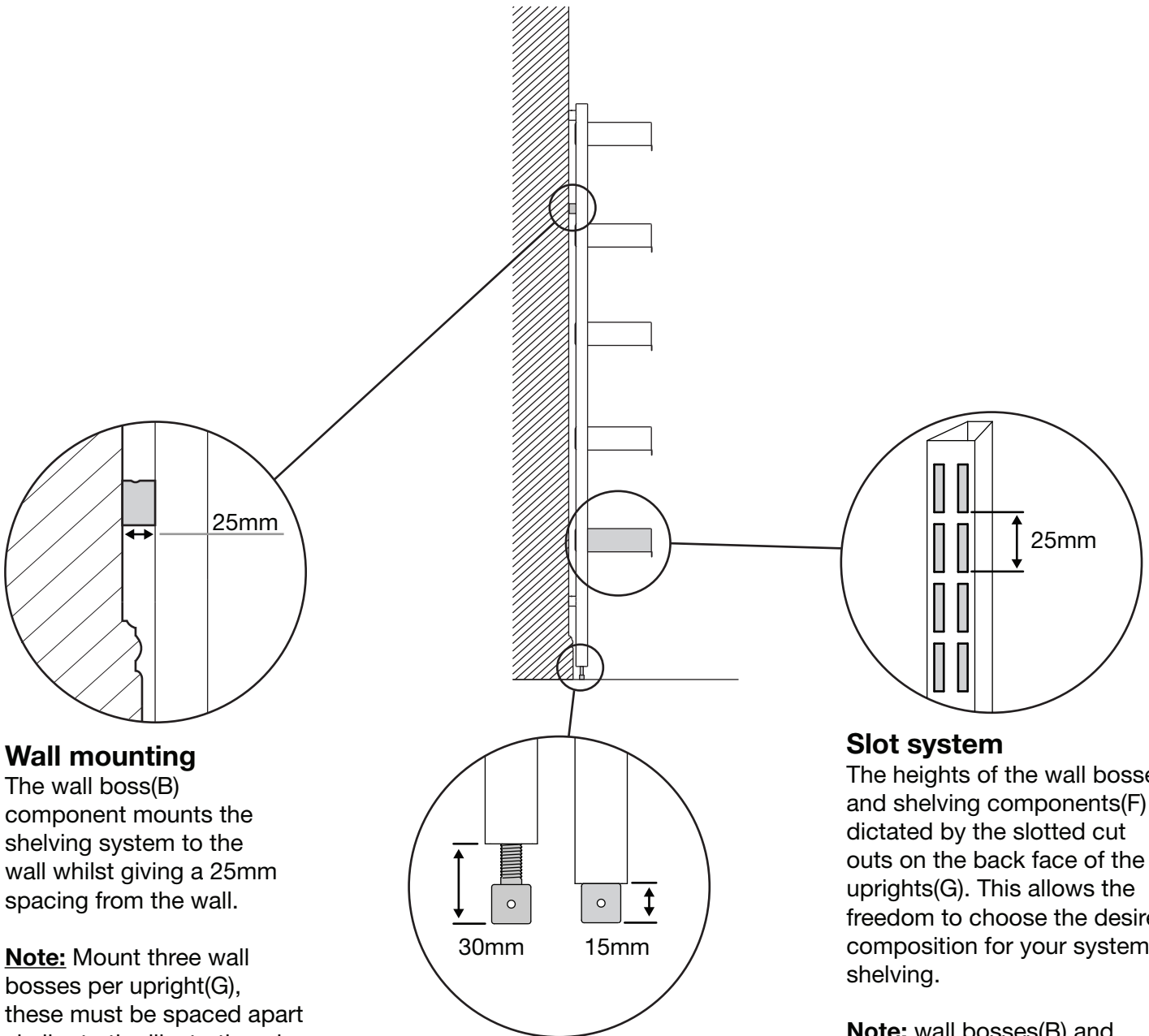


Extension 600 system

Planning

Before beginning the installation process, it is important to assess the area that you wish to install the shelving system in. Illustrated below, outlines important design features that help with adapting the shelving system to suit your space.

Please note: Wall bosses(B) and shelves(F) cannot be mounted in the same slot location on the upright(G).



Wall mounting

The wall boss(B) component mounts the shelving system to the wall whilst giving a 25mm spacing from the wall.

Note: Mount three wall bosses per upright(G), these must be spaced apart similar to the illustration above. Allow for mains plug clearance.

Upright foot

The foot is threaded into bottom of the upright(G), allowing a maximum of 15mm of adjustment.

Note: This component is optional but advised if uncertain about the strength of your wall substrate.

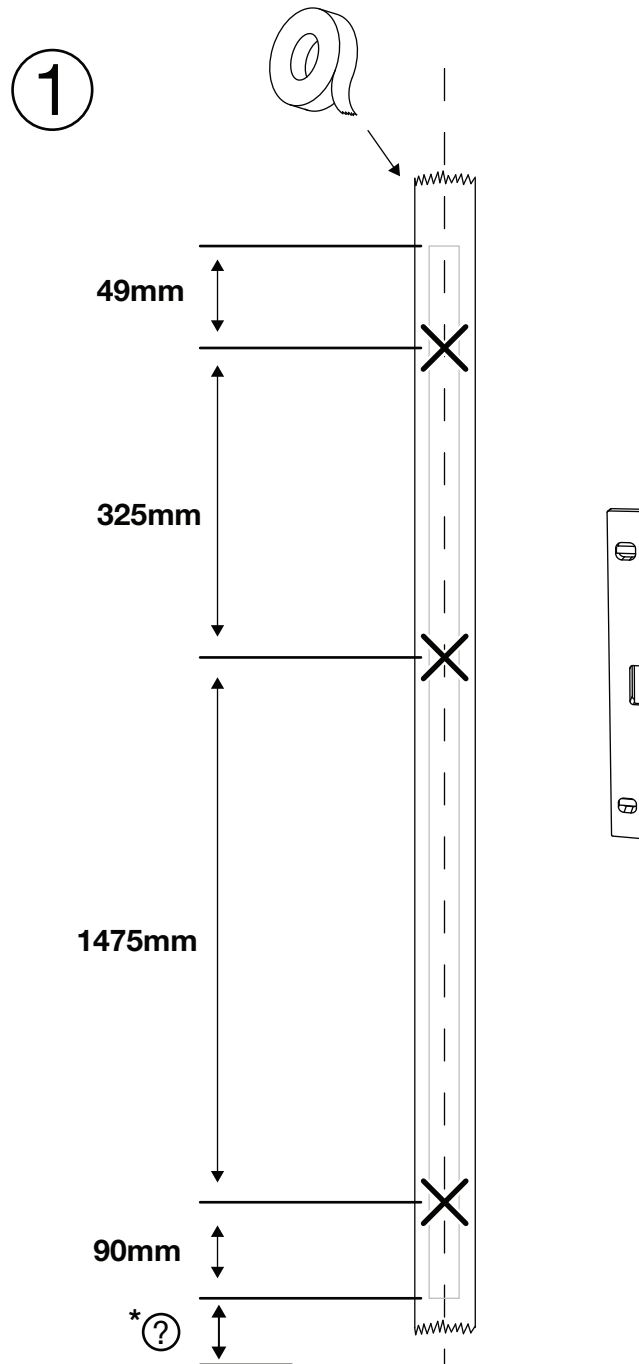
Slot system

The heights of the wall bosses and shelving components(F) are dictated by the slotted cut outs on the back face of the uprights(G). This allows the freedom to choose the desired composition for your system shelving.

Note: wall bosses(B) and shelves(F) cannot be mounted in the same slot location.

Measuring

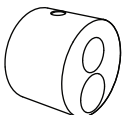
Firstly decide the distance from the floor you wish your shelving unit start from*, using the optional foot or floating from the floor. We suggest using masking tape to mark the first upright(G) location, measure 1940mm up from the start of the first upright to the top. Using the measurements given below, mark on the locations for the three wall bosses(B), these are indicated by the crosses.



Supplied for these steps



A x 6



B x 6



C x 6



D x 6



E x 2



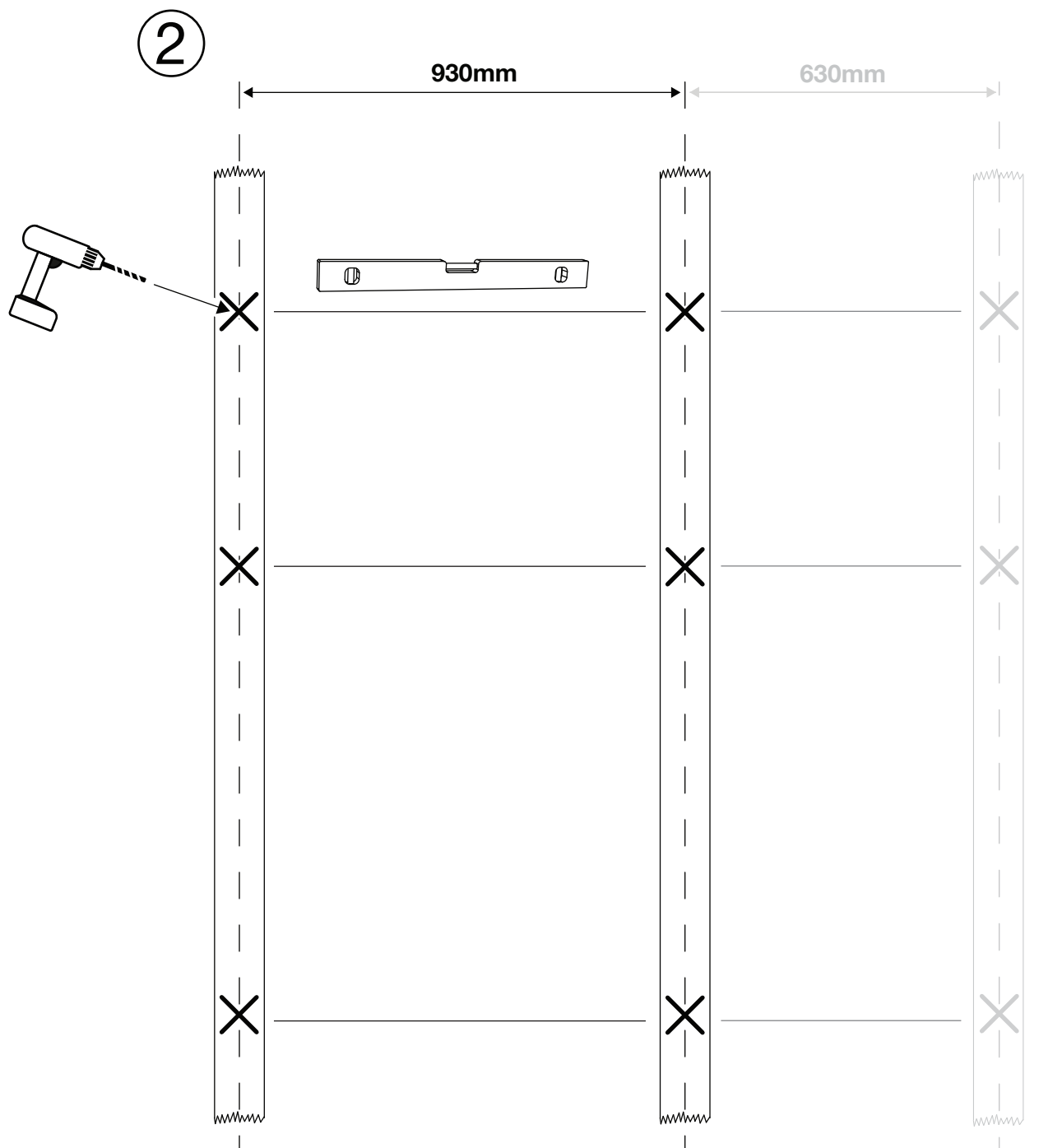
F x 5



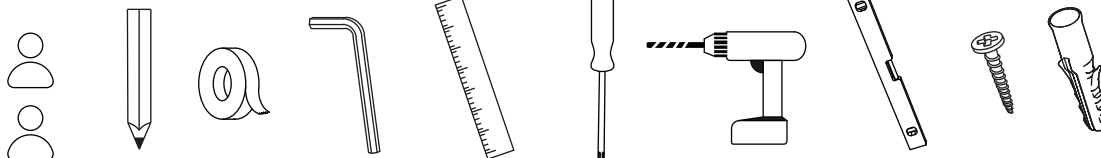
G x 2

Measuring

Measure 930mm across to the second upright and mark again with masking tape. Making sure the centre is marked accurately and check with spirit level. Drill holes for fixings at marked points, using appropriate drill bit for chosen screw and rawl plug.

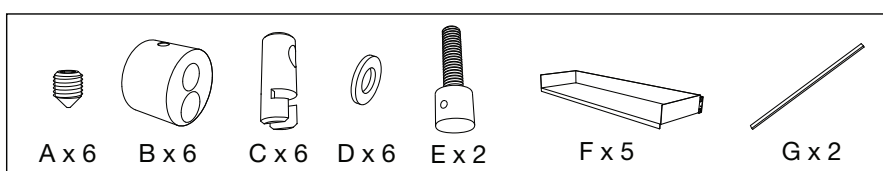
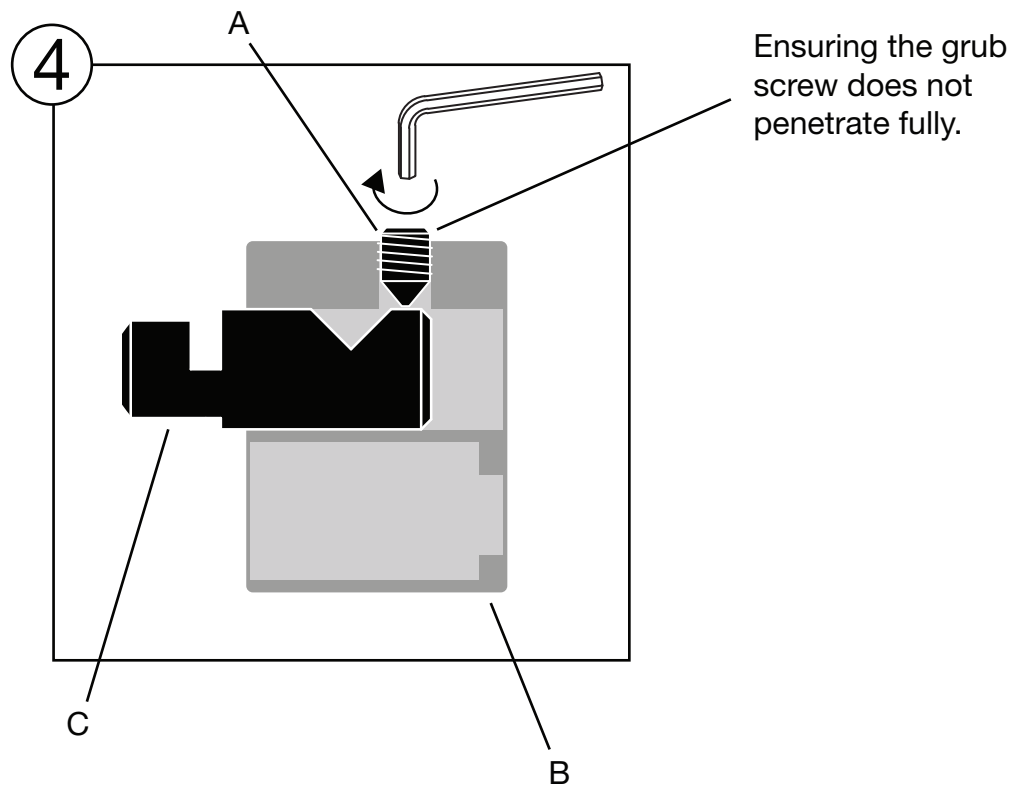
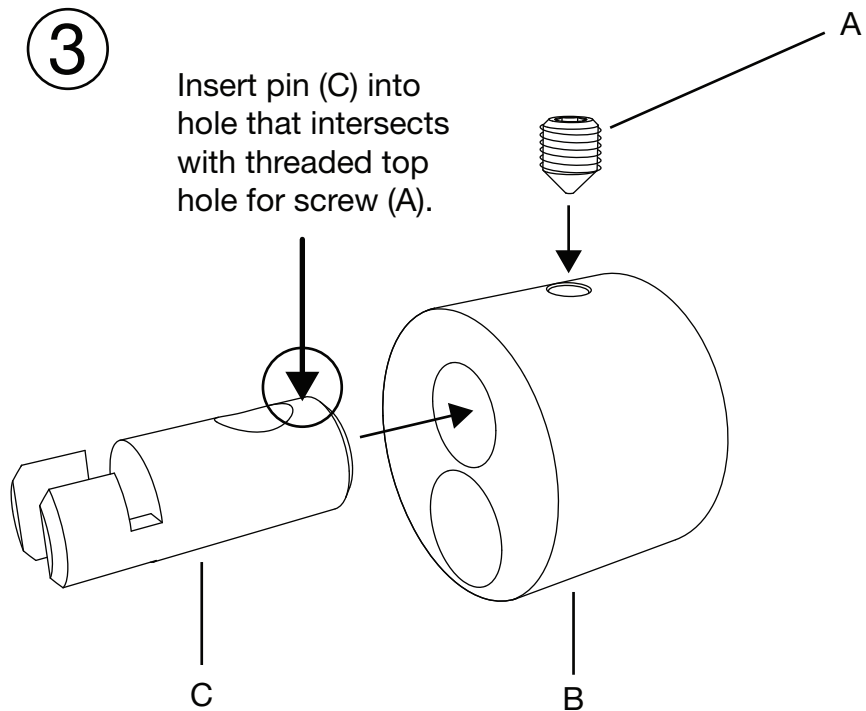


Required



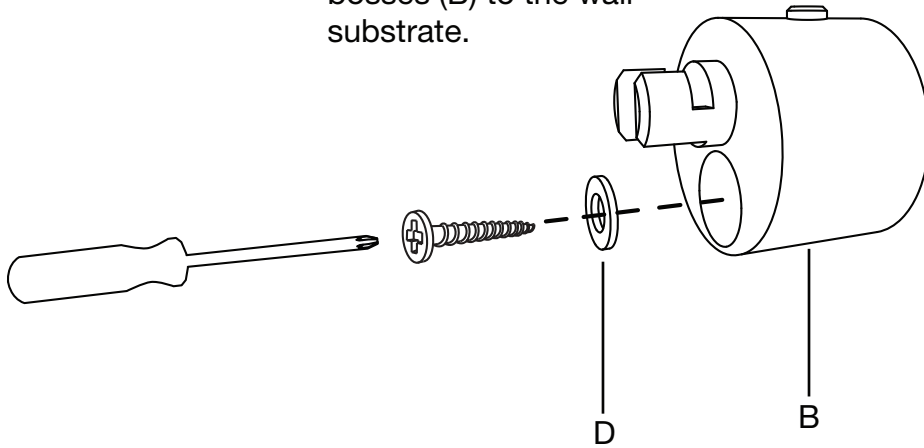
Assembly

Before attaching the wall boss (B) to the wall, fix grub screw (A) to pinch the back end of fixing pin (C), (section after intended groove). This temporarily secures the fixing pin in place with additional tolerance for attaching upright (G).



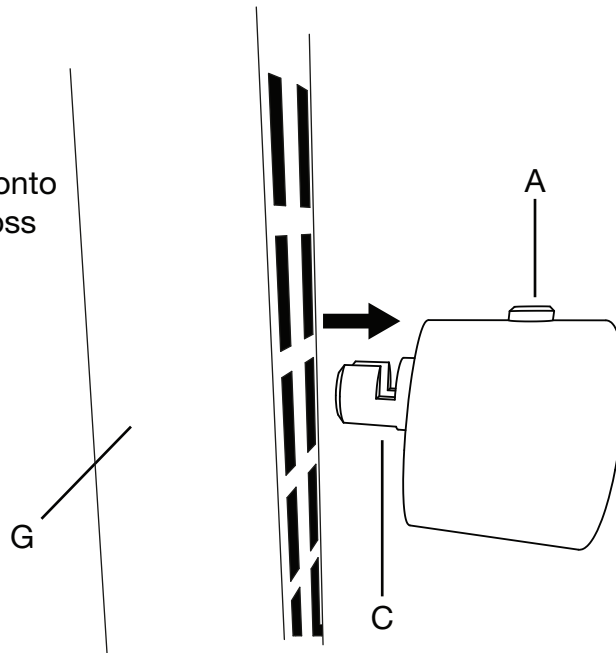
5

Fix assembled wall bosses (B) to the wall substrate.



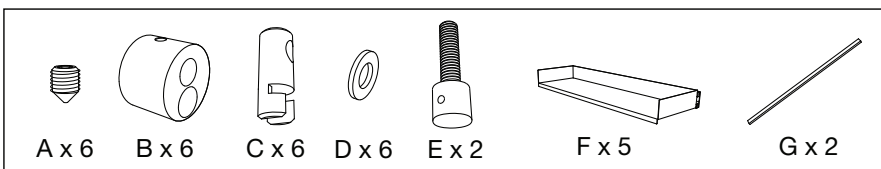
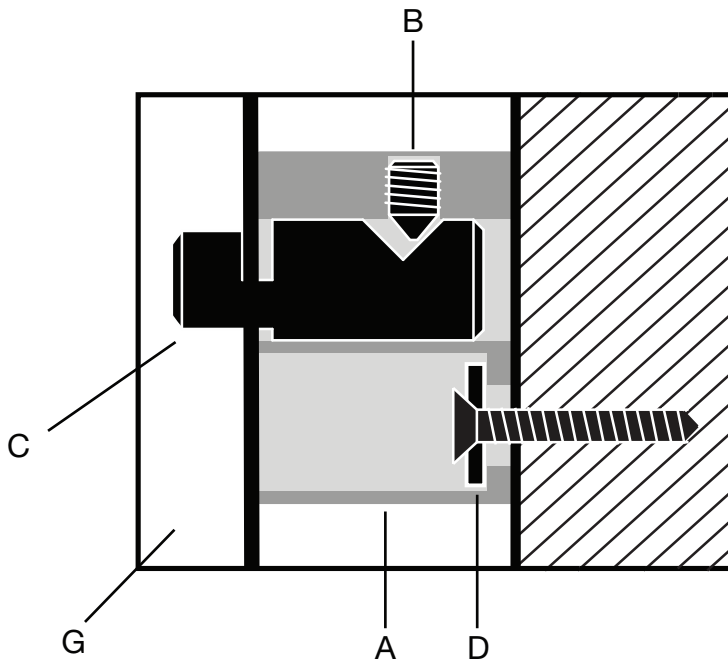
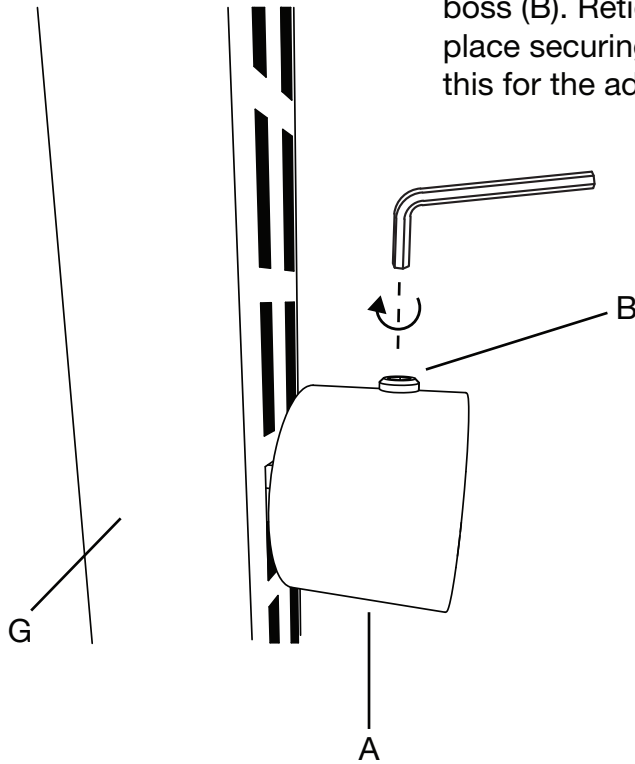
6

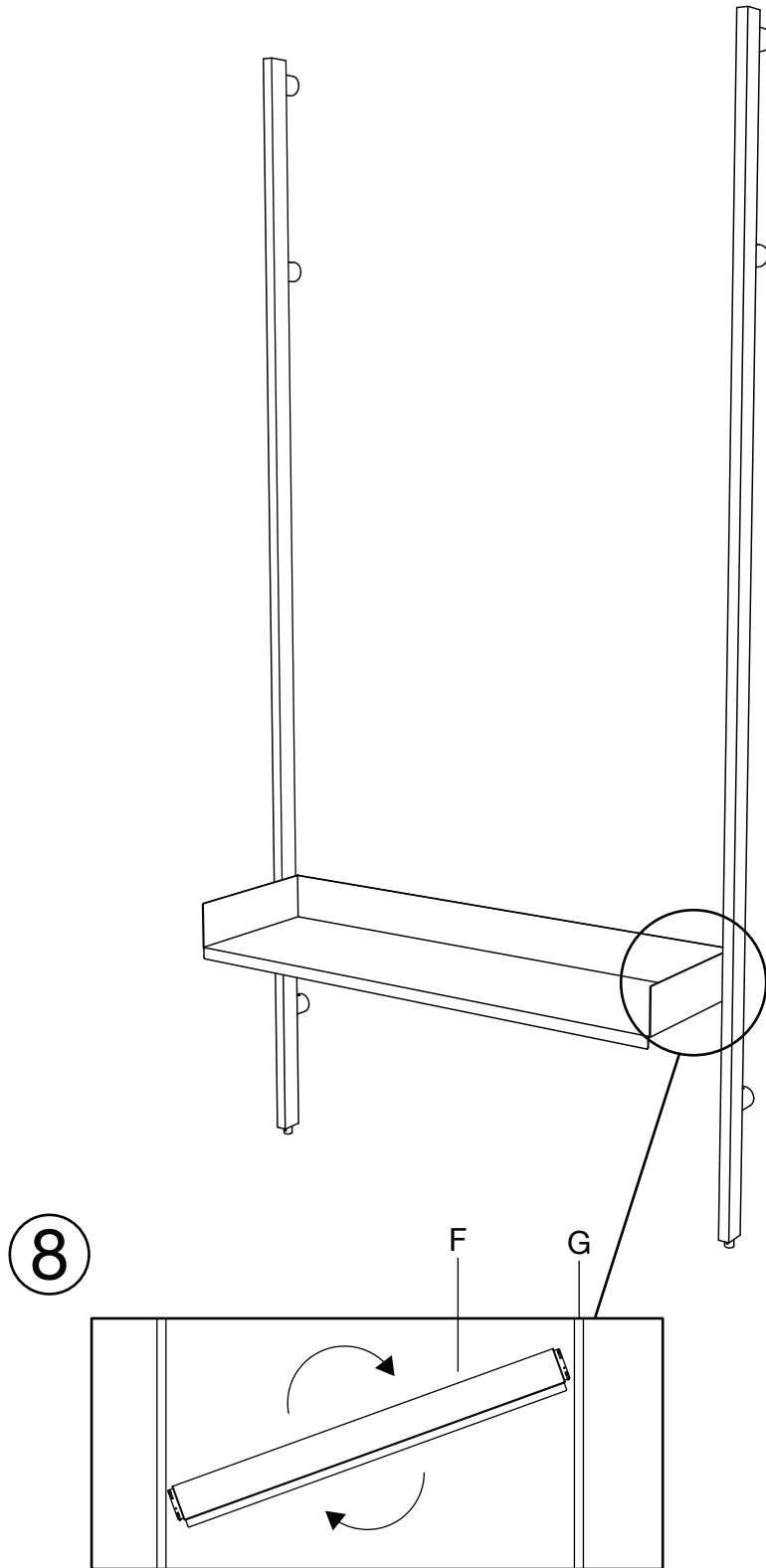
Slot upright (G) onto attached wall boss pin (C).



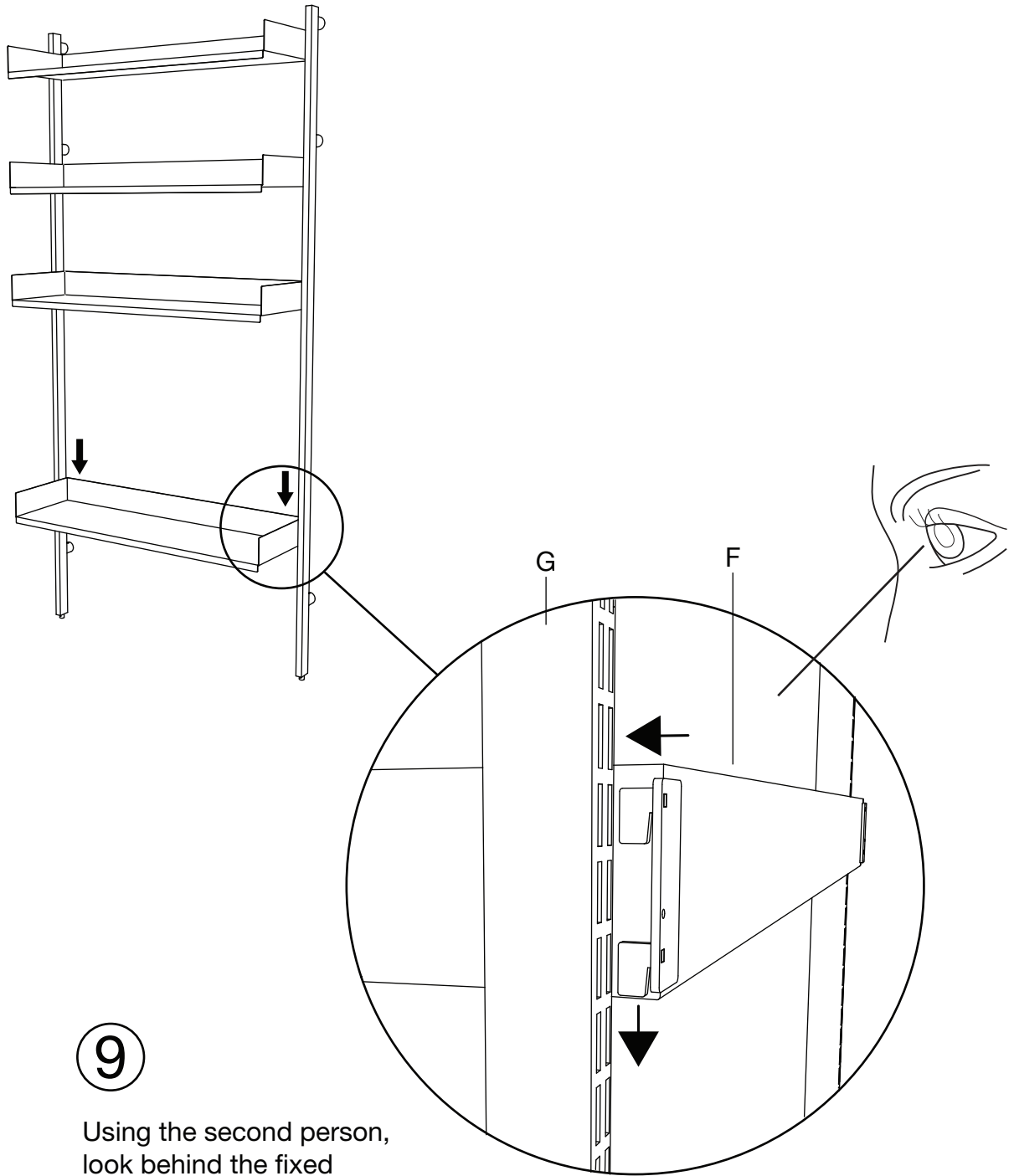
7

Loosen grub screw (A), allowing upright (G) to push closer to wall boss (B). Retighten grub screw into place securing upright firmly. Repeat this for the adjacent upright.





To attach the shelves, tilt the shelf enough to fit between the uprights and then straighten the shelf so that it is level.

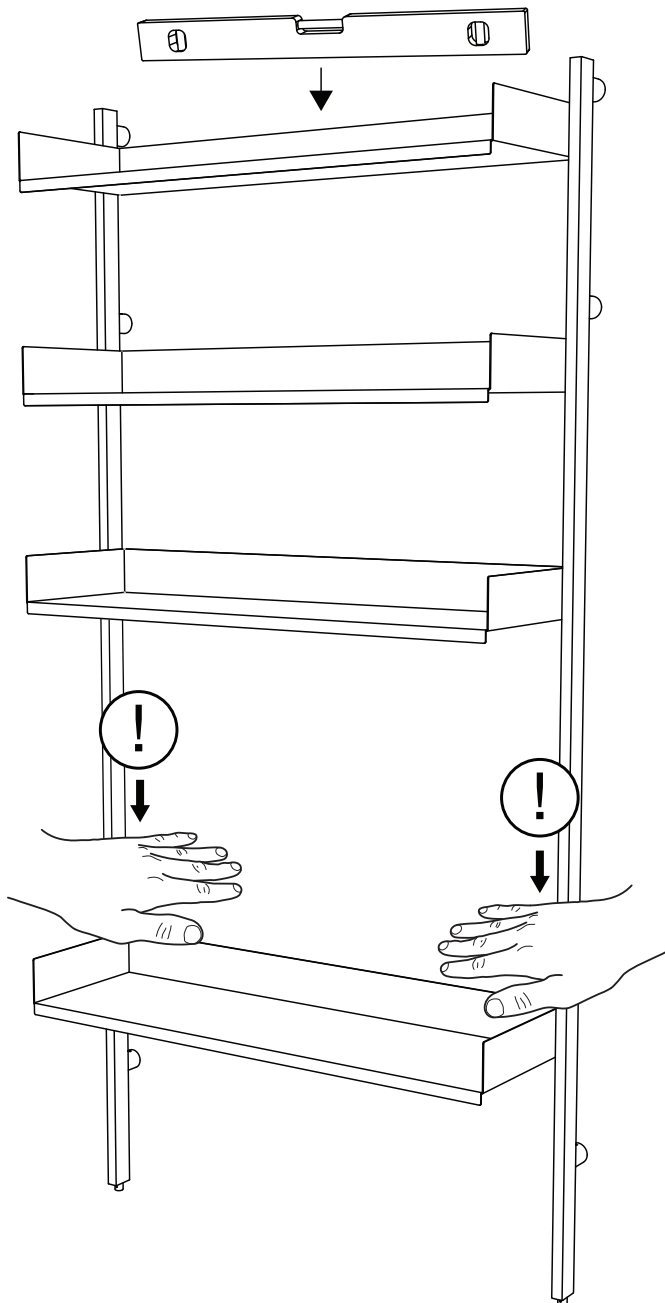


9

Using the second person, look behind the fixed uprights(G) to guide the shelf hooks into the slots.

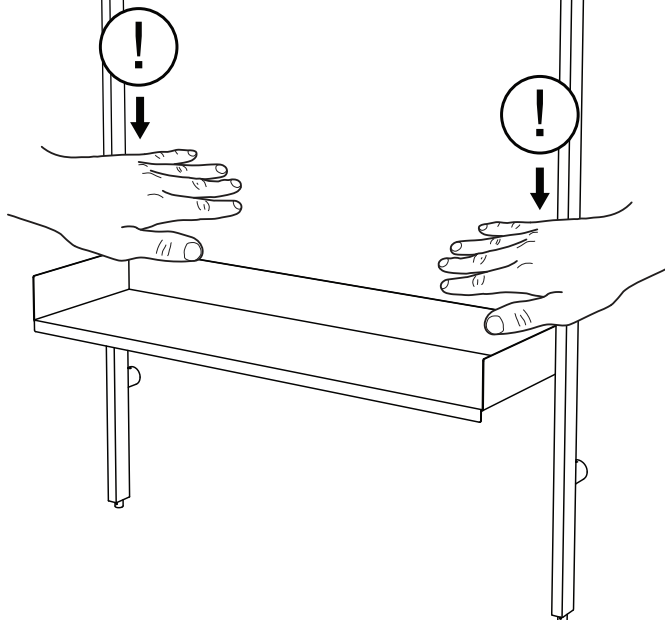
10

Check each shelf is level, using a spirit level.



11

Once each shelf is level, knock down connected corners to ensure slotted section is correctly in place.



Care Instructions

Slot shelving – designed by Terence Woodgate

The Slot wall adjustable shelving system is a pure minimal design where the components have clarity and are not compromised by visible slots or holes. By positioning the vertical supports slightly away from the wall, the shelves can be fixed to hidden slots facing the wall. The shelves come in two widths, 600mm and 900mm and simply hook on to the slotted supports, and can be adjusted vertically to within 25mm.

To prolong the life of the product and retain its appearance and functionality, we would like to give you some relevant information and care advice:

This unit is manufactured using powder coated mild steel and stainless steel components.

It is recommended that no abrasive cleaners or solvents are used to clean the unit. Please only use proprietary furniture polishes or alternatively, warm water with a diluted mild detergent.

We thank you for purchasing this product and wish you many years of enjoyable and functional use.

For more related products please visit: casefurniture.com



WARNING: Climbing or exceeding maximum load on shelving may result in serious or fatal injuries. Please keep children off shelving unit.



Case Furniture Ltd
London, SW18 2HZ
United Kingdom

info@casefurniture.com
casefurniture.com