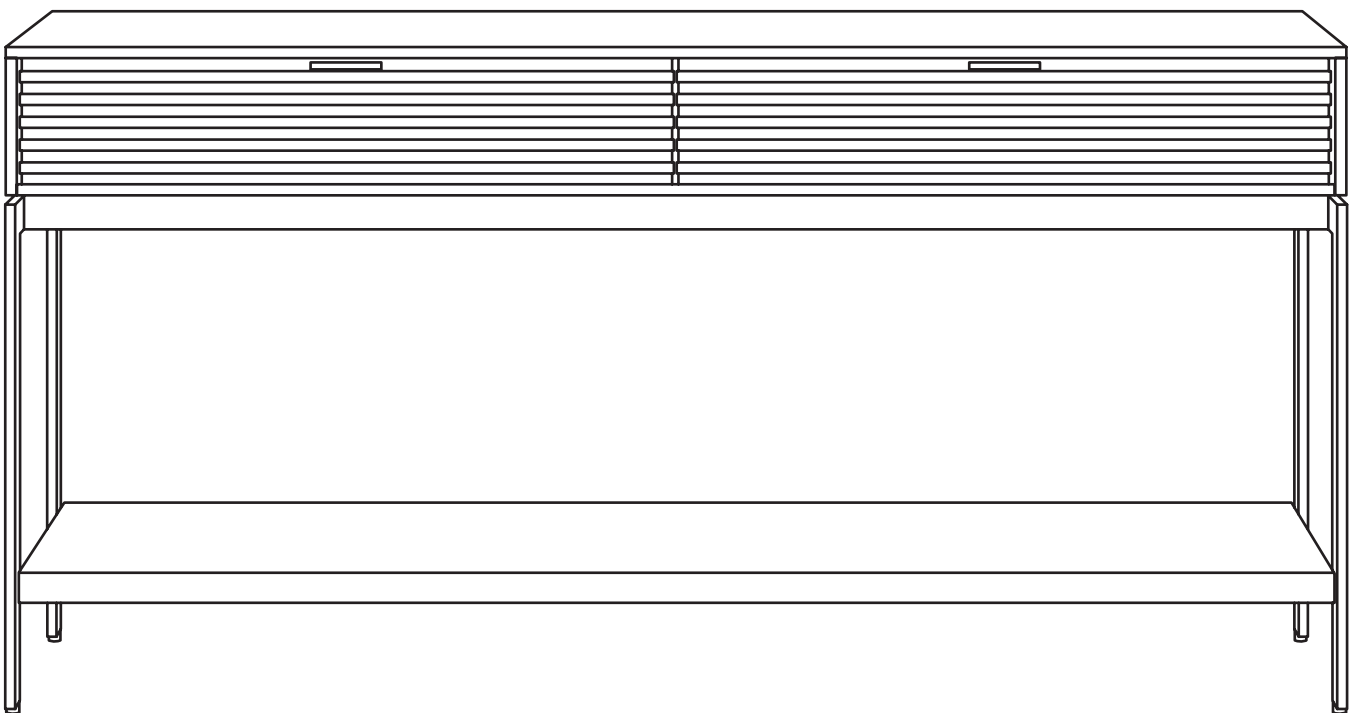


CORA™ 1173

CONSOLE TABLE

INSTRUCTION MANUAL

LET'S GET STARTED.



DESIGN MATTHEW WEATHERLY

BDi

BDIUSA.COM

Congratulations on the purchase of your Cora Console Table from BDI. Your console table has been designed to provide a lifetime of enjoyment. This manual will provide assembly instructions and other helpful information to ensure you get the most out of your product. Please save it for future reference.

Your Cora Console Table has been engineered for simple assembly. Please follow these directions carefully to prevent any damage.

Should you need further assistance, contact BDI at customerservice@bdiusa.com.

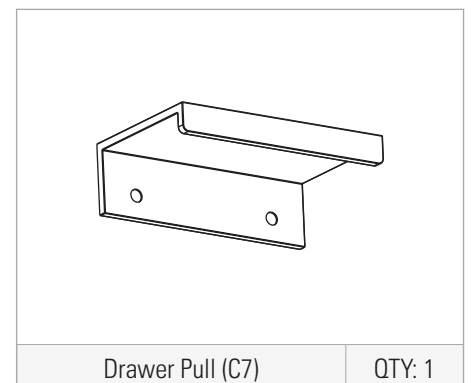
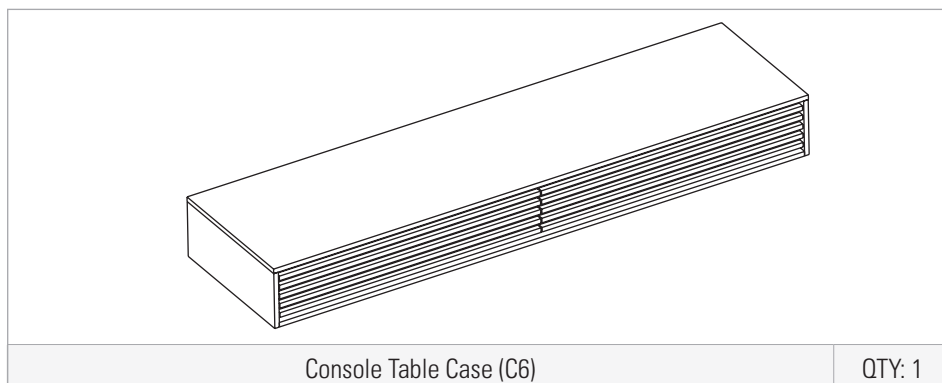
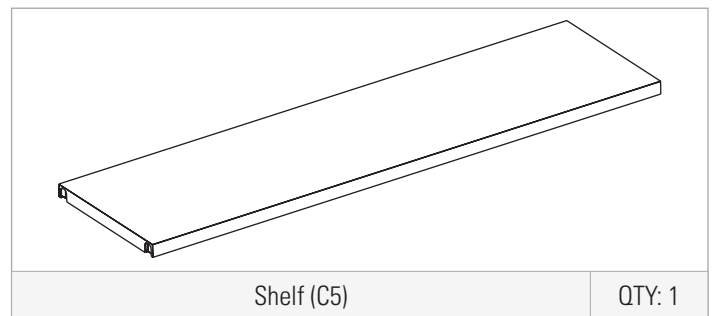
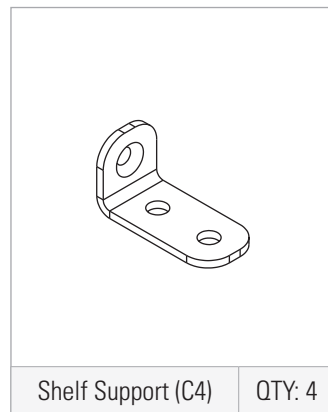
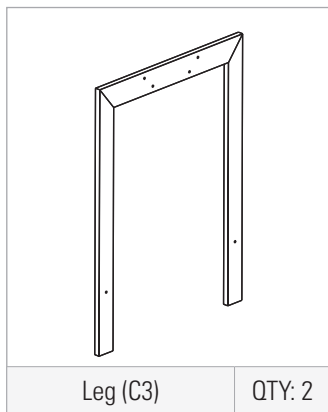
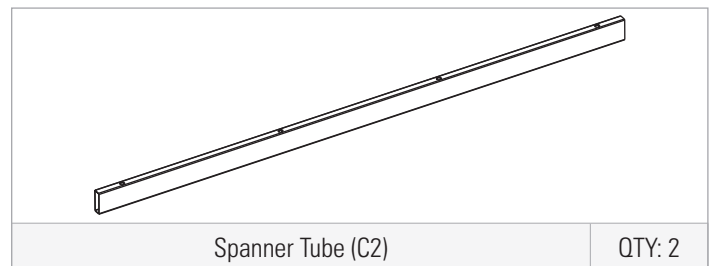
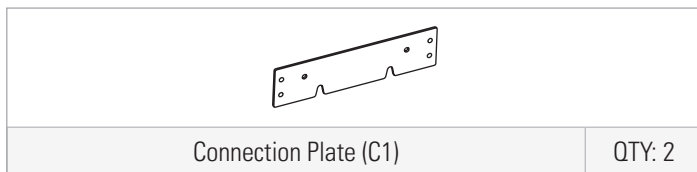
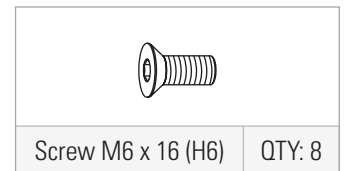
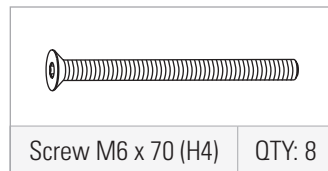
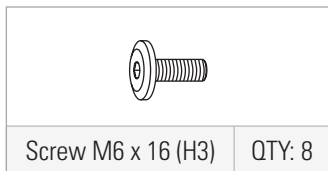
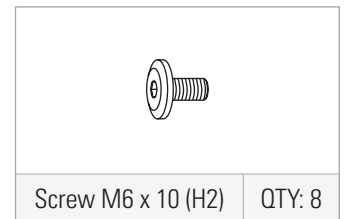
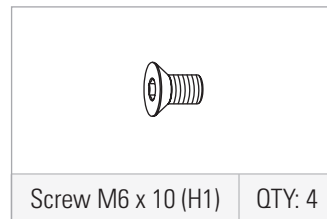
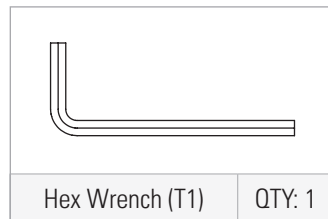
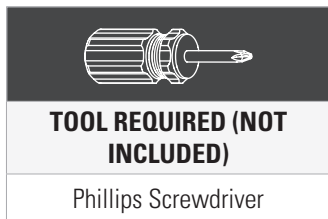
ENJOY!



HARDWARE AND COMPONENTS

Unpack and identify the parts listed below. The assembly workspace should be a non-marring surface, such as carpet. For missing hardware pieces, please contact BDI Customer Service at customerservice@bdiusa.com. For all other concerns, please contact your BDI retailer.



Do not use power tools for the assembly of this product.

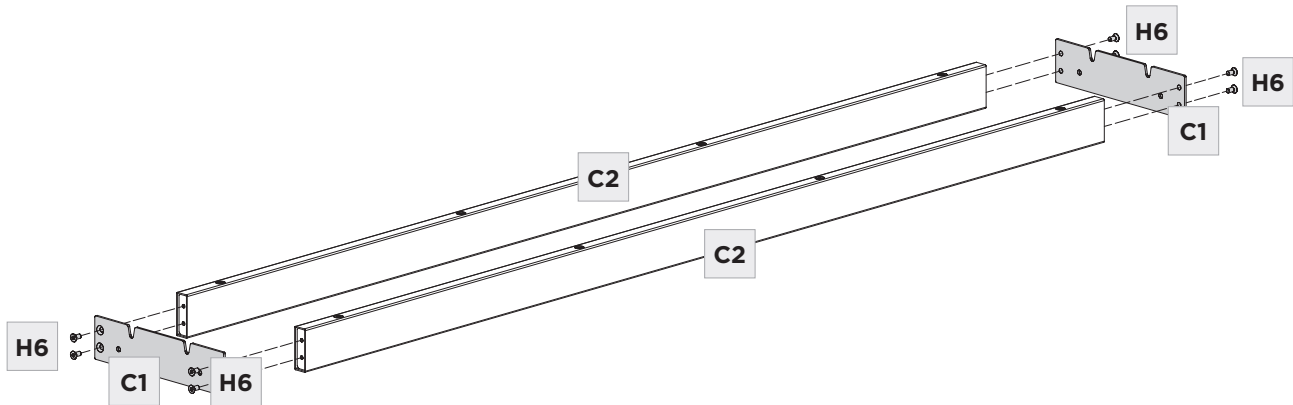


ASSEMBLY

STEP 1. CREATE BASE

Attach the **Connection Plates (C1)** to the **Spanner Tubes (C2)** using **8 Screws (H6)**. Ensure that the **open slots** in the **Connection Plates are facing up**. Tighten with **Hex Wrench (T1)**.

	HEX WRENCH – T1	QTY 1
	SCREW – H6	QTY 8



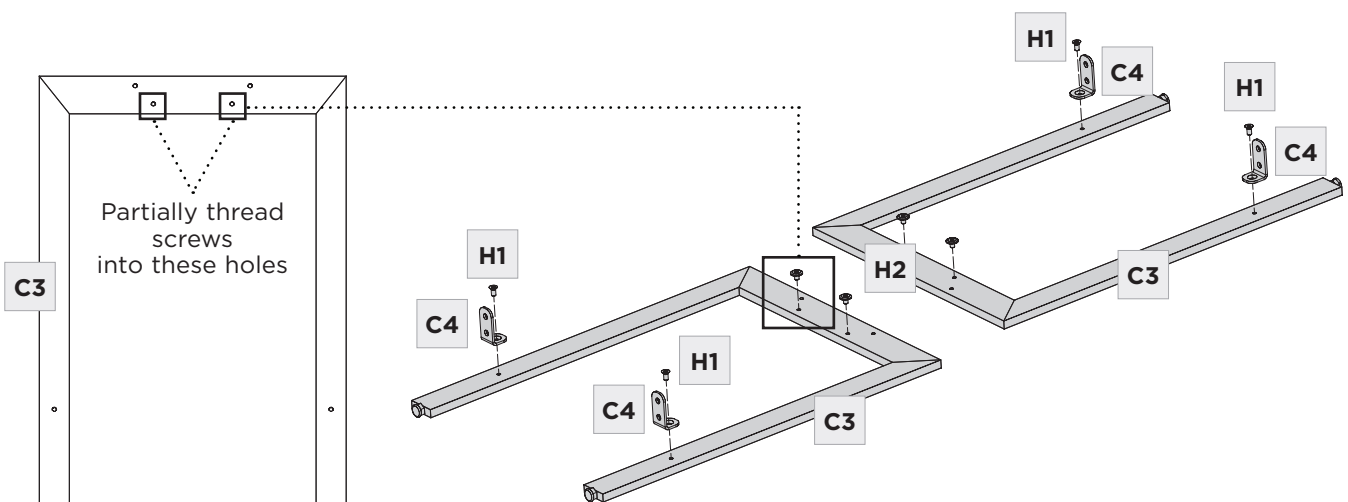
ASSEMBLY

STEP 2. PREPARE LEGS

Partially thread **2 Screws (H2)** into the lower, closer together set of holes in each **Leg (C3)** as shown. **Leave at least 1/4" (6mm) gap** between the head of the screw and the leg.

Attach the **4 Shelf Supports (C4)** to the **2 Legs (C3)** using **4 Screws (H1)** in the orientation shown. Tighten screws with **Hex Wrench (T1)**.

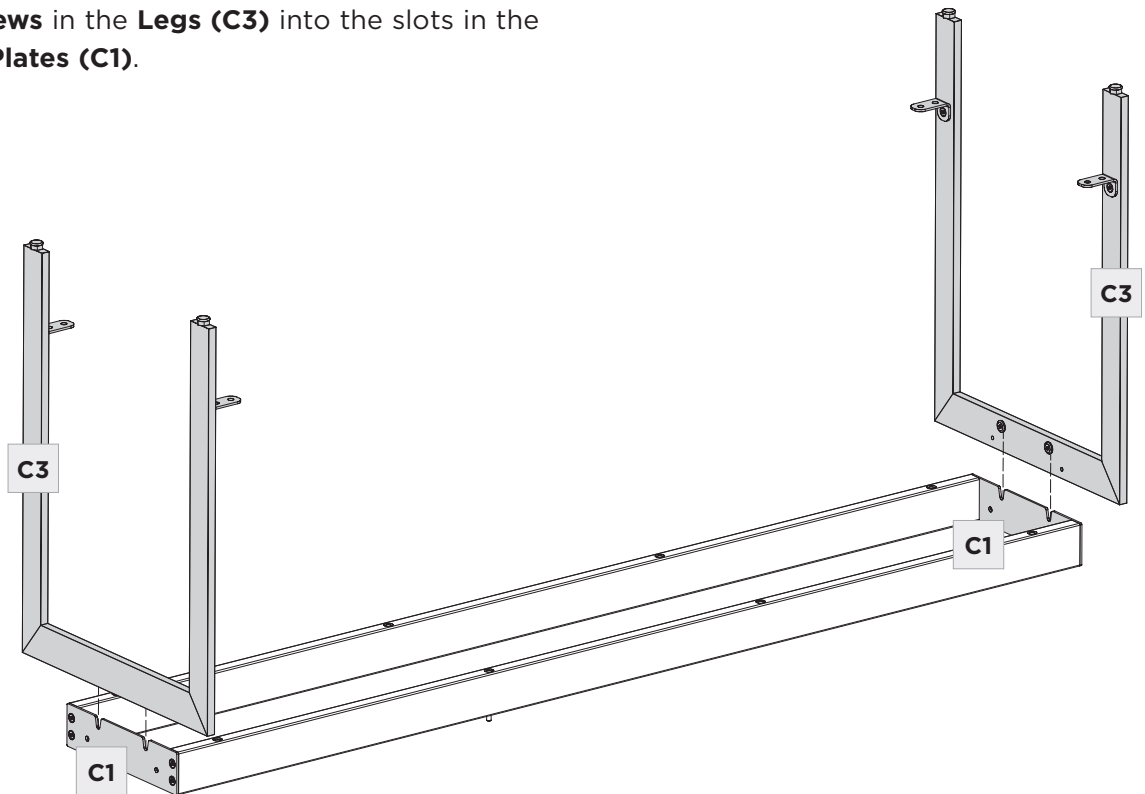
	HEX WRENCH – T1	QTY 1
	SCREW – H1	QTY 4
	SCREW – H2	QTY 4



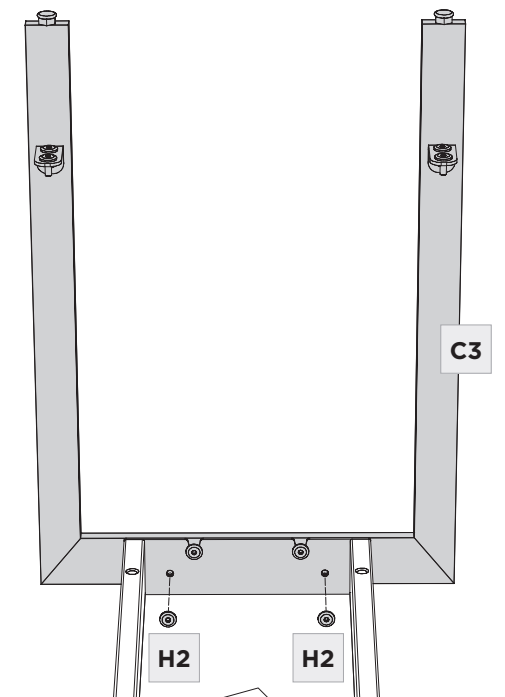
STEP 3. ATTACH LEGS TO BASE



ASSEMBLY

Slide the **Screws** in the **Legs (C3)** into the slots in the **Connection Plates (C1)**.





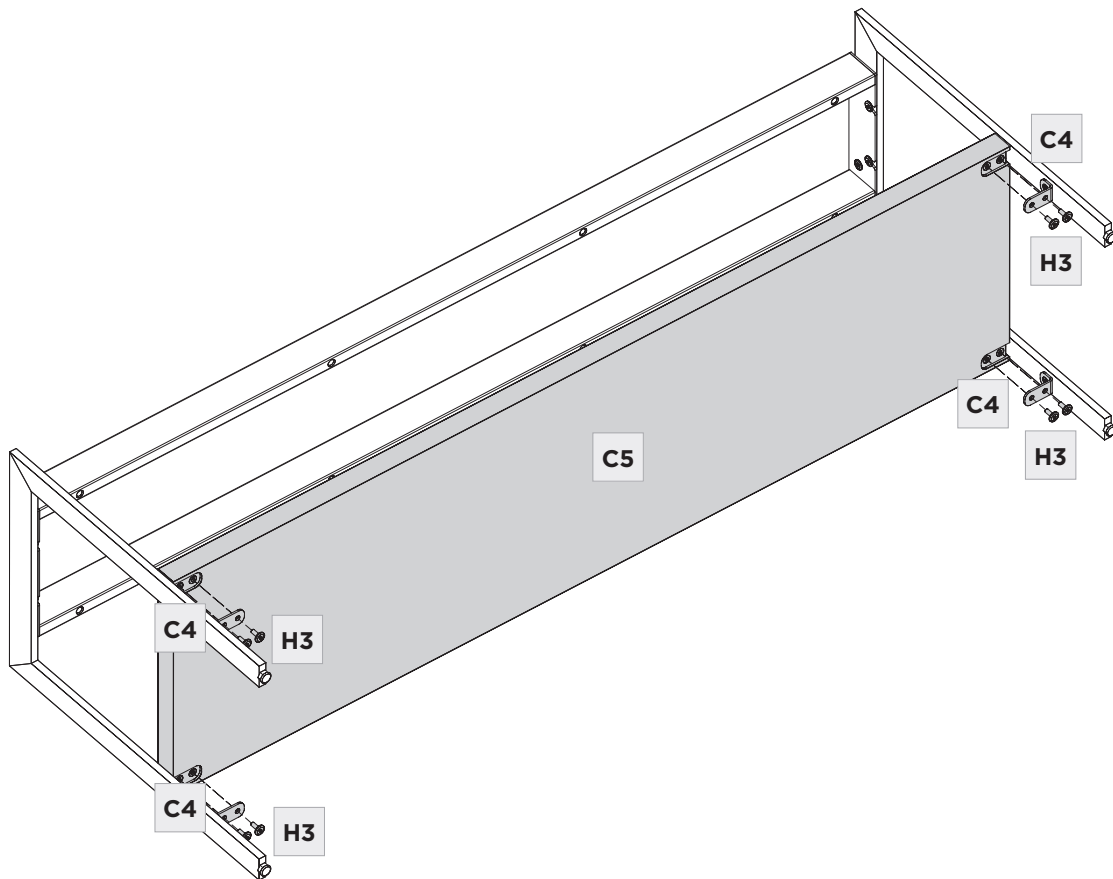
Thread the remaining **4 Screws (H2)** into the holes in the **Legs (C3)**. Tighten all screws with **Hex Wrench (T1)**.



	HEX WRENCH – T1	QTY 1
	SCREW – H2	QTY 4

Lay the **Base Assembly** on its side. Install the **Shelf (C5)** to the **Shelf Supports (C4)** using **8 Screws (H3)**. Do not tighten until all screws are installed. When all screws have been installed, tighten with **Hex Wrench (T1)**.



	HEX WRENCH – T1	QTY 1
	SCREW – H3	QTY 8

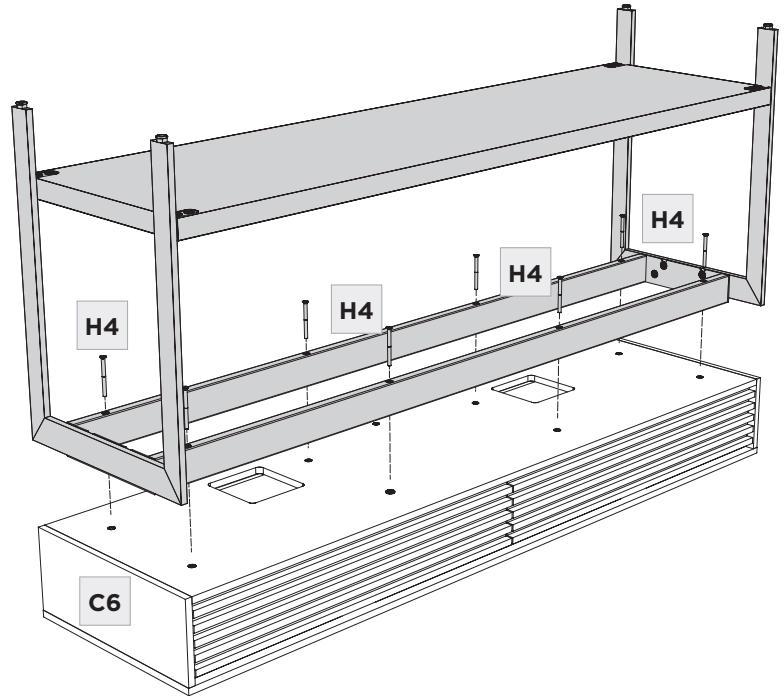


STEP 5. ATTACH BASE ASSEMBLY TO CONSOLE TABLE CASE

ASSEMBLY

Attach the **Base Assembly** to the **Console Table Case (C6)** with **8 Screws (H4)**. Tighten with **Hex Wrench (T1)**.


	HEX WRENCH - T1	QTY 1
	SCREW - H4	QTY 8



STEP 6. INSTALL DRAWER PULLS

ASSEMBLY

With the help from another person, carefully flip the table onto its base. Open the drawers and install the **2 Drawer Pulls (C7)** using **4 Wood Screws (H5)**. Tighten with **Phillips Head Screwdriver (not included)**.

	NOT INCLUDED PHILLIPS SCREWDRIVER	QTY 1
	SCREW - H5	QTY 4

