



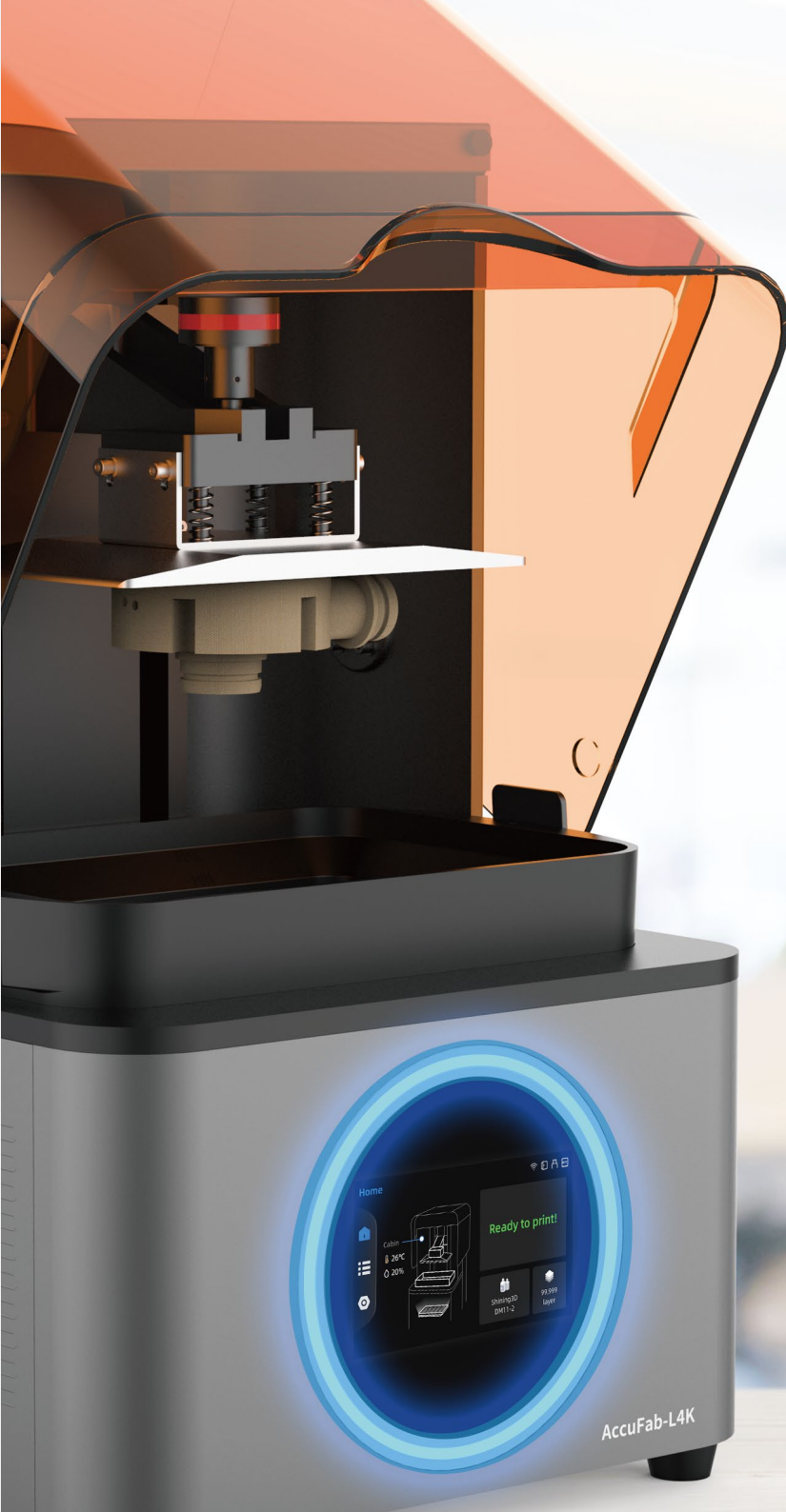
SHINING 3D®

# AccuFab-L4K

High-Precision Stereolithography 3D Printer

Improving Prototyping Efficiency  
Shortening the Product Development Lifecycle





## AccuFab-L4K

AccuFab-L4K is a high-precision stereolithography 3D printer independently developed by SHINING 3D. With the help of a 4K resolution and the printing size of 192x120x180 mm deliver extraordinary print results with high fidelity. Simultaneously, AccuFab-L4K's operation is continuous and stable. It is the ideal 3D printer to meet prototyping, engineering and small volume production needs.



**HIGH  
PRECISION**



**HIGH  
RESOLUTION**



**HIGH  
FIDELITY**



**MULTIPLE  
ENGINEERING MATERIALS**

AccuFab-L4K

## Unparalleled Accuracy

### Accurate & Precise

IT7- level printing accuracy, to ensure the printing size is consistent with the design size.

### Outstanding Uniformity

High luminance uniformity achieves up to 90%.

### Beyond the Limits

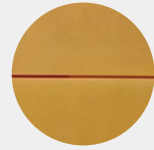
Provides not only the possibility to obtain features smaller than a pixel, but also superior surface finish.



IT7  
Accuracy



IT8  
Accuracy



IT9  
Accuracy



## Reliable Performance

### State-of-the-Art Robustness

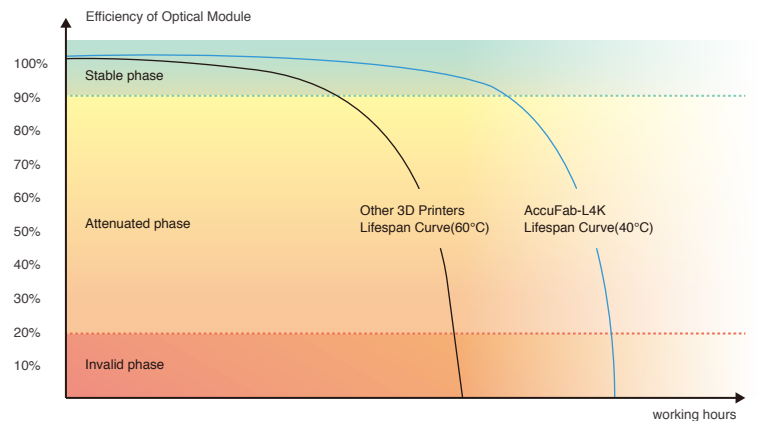
AccuFab-L4K was put to the test printing 5 million layers in a real engineering environment, proving its reliability and durability.

### District Cooling System

DCS (District Cooling System) maintains the Temperature of the optical system under 40°C, while extending the 3D printer's lifespan significantly.

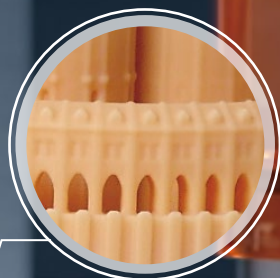
### Industrial Grade Components and Quality Inspections

AccuFab-L4K is assembled of industrial-grade components passing 21 strict factory inspections along the production line to ensure highest quality.



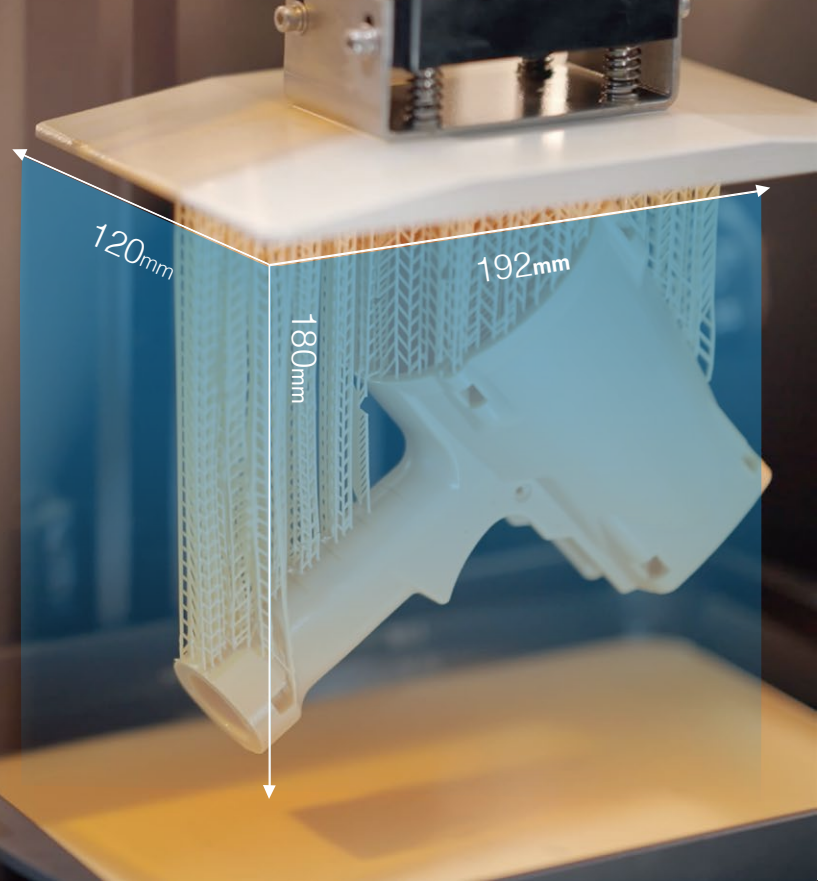
## 4K Resolution

4K resolution satisfies the demands of users for efficiency and details.



## Large Printing Size

Large format, rapid prototyping,  
high efficiency printing.



## Multiple Material Options

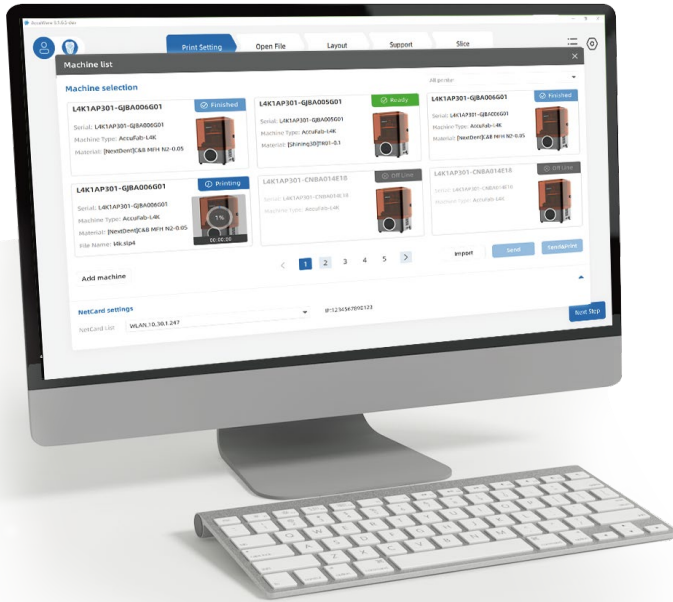
### Shining Engineering Resin

Shining Engineering covers a wide range of materials for engineering 3D printing applications, including Standard Resin, Bio-compatible Resin and Water Washable Resin, providing great size accuracy, surface quality, and low deformation rate.

### Certified 3rd Party Material

Shining 3D partners with industry-leading brands in engineering material, empowering customers to exploit the maximum of opportunities and benefit from highest flexibility.





## Professional Software

### Plug and Play

Guided interactive operation provides gentle learning curve, low learning costs.

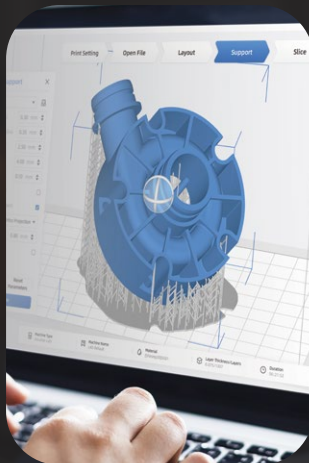
### Free Updates

Push notifications whenever new free software updates and material packages are available.

### Collaborative Management

Multi-equipment collaborative management, achieves rapid production in small batches.

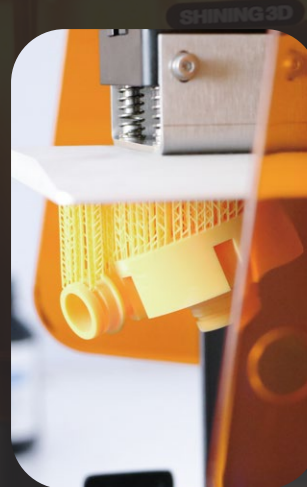
### Data preparation



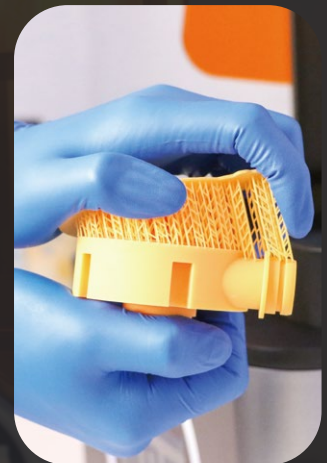
### Add material



### Print



### Post-process



# APPLICATIONS

SHINING 3D provides a wide range of engineering resin options to meet diverse quality requirements, creating a great multitude of application scenarios for AccuFab-L4K high-precision stereolithography 3D printers.

## Standard Resin

Standard resin is a stable and high-performance standardized resin. It has great size accuracy as well as surface quality, which is great for displaying details of the prints. It meets most prototyping, engineering, and low-volume production needs.



## Water Washable Resin

It's an environment friendly low odor resin, which is easy to clean by water. There is no worry about the dangers caused by using alcohol or IPA. Water Washable Resin features high surface quality, strong mechanical properties and good stability.



## Rigid Resin

Specifically engineered to deliver class-leading tensile strength and rigidity, as well as high print accuracy with low shrinkage, ensuring long-term UV stability of printed parts. These prints have low water uptake and are easy to polish.



## Durable Resin

Durable Resin can endure certain pressure without damaging the structure, suitable for engineering prototypes that need to withstand pressure or tension temporarily. This is the right choice for tough resin applications where a limited degree of impact adsorption and compression, low-stress bending and elasticity is required to avoid brittle fracturing.



## Flexible Resin

Flexible resin with fine softness and good elastic features, can simulate deformation scenarios of different products during actual use. It delivers high elongation at break, combining high cushioning with long-term rebound and torsional strength thanks to its minimal structural degradation over time.



## Medical Resin

Self-developed resin with medical equipment certification record, suitable for the printing of entry-level medical-related and medical aids products. i.e. wrist guards, orthodontic model



# TECHNICAL SPECIFICATION

## AccuFab-L4K

<b>Optical</b>	Resolution	3840×2400
	Pixel Size	0.05 mm
	Wave Length	405 nm
	Light Intensity	3 mw/cm <sup>2</sup>
	Light Source	UV LED + LCD
<b>Print</b>	Printing Size	192 mm×120 mm×180 mm
	Print Speed	10 ~ 50 mm/h
	Tolerance	±0.05 mm
	Layer Thickness	0.025 / 0.05 / 0.075 / 0.1 mm
<b>Environment</b>	Working Temperature	20°C ~ 30°C
	Working Humidity	30% ~ 70%
<b>Others</b>	Interface	5"touch screen
	Connection	Wi-Fi/Enterenet/Thumdrive
	Weight	19 kg
	Printer Dimensions	360 mm×360 mm×530 mm
<b>Materials</b>	SHINING 3D Engineering Material	White Material: TR01、S1; Yellow Material: DM12; Transparent Material: SG01; Black Material: S2; Washable Material: W1
	BASF Engineering Material	Durable Material: ST45、ST80; Rigid Material: RG35、RG50; Flexible Material: FL60、EL150
	Third Party Certified Resin	Third party resin materials approved by SHINING 3D, can also be used in conjunction with AccuFab-L4K High-Precision Stereolithography 3D Printer

Obtained CE, RoHS, WEEE, FCC, Photobiological Safety International Certification

Notice: SHINING 3D reserves the right to explain any alteration of the specifications and pictures.