

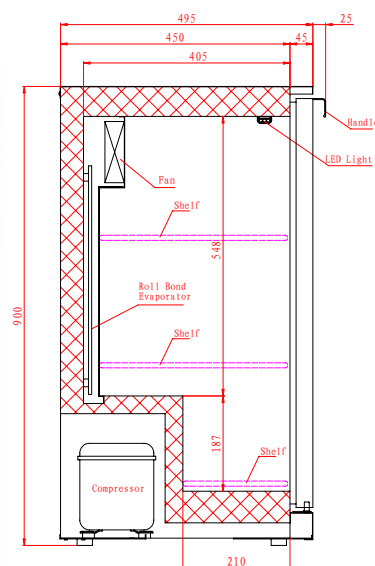
# Bar Bottle Coolers

Stainless Steel, Hinged Door(s)

BAR1SS



BAR2SS



BAR3SS



### FEATURES

Stainless steel front, top and sides painted silver; Aluminium stippled interior

Self closing, double glazed door(s)

Heavy duty adjustable shelves

2 shelves per door

Lock fitted as standard

Internal LED illumination

Replaceable door gasket

### TECHNICAL SPECIFICATIONS

Controller: Digital controller with temperature display

Cooling: Fan assisted

Defrost: Automatic

Refrigerant: R600a

Climate Class: 4

Temperature Range: +4°C ~ +12°C

Power Supply: 13amp

MODEL	DOOR	CAPACITY (Bottles*)	GROSS CAPACITY	EXT. DIMENSIONS (H x W x D mm)	POWER CONSUMPTION	DECIBELS	WEIGHT (kg)	RRP
BAR1SS	1	130	130L	900 x 598 x 520	165W	53dBA	48	
BAR2SS	2	182	200L	900 x 903 x 520	185W	54dBA	65	
BAR3SS	3	293	310L	900 x 1353 x 520	320W	59dBA	95	

\* based on 275ml bottles

Note: fully opened doors increase width by 5mm each side



See page 340 for accessories

