

SPH505

Product Family	Dishwasher
Subfamily	Hoodtype dishwasher
Series	Ecoline
Basket dimensions	500x500 mm
Default power supply	400 V 3N~ / 16 A / 9,7 kW / 50 Hz
Simultaneous heating	Yes
Width	635 mm
Depth	750 mm
Height	1510 mm
Maximum height with hood open	2102 mm
Usable load height	470 mm



Target

Potential users	Bars/Cafes; Hotels; Restaurants/Catering; Butcher's shops; Schools; QSR
------------------------	--

Aesthetics

Control Panel	Electronic	Led colour	Red
----------------------	------------	-------------------	-----

Functions



Functions	GN 1/1 trays washing; Triple filter; HTR; Door clearance 470mm
------------------	--

Programmes

Programs

Boiler 85°C/Tank 60°C-1'30"	Boiler 85°C/Tank 60°C-2'30"	Boiler 85°C/Tank 60°C-4'
Drain and self cleaning cycle	Yes	
Maximum baskets/hour	40	
Maximum plates/hour	720	

Interface

Panel	Ecoline 2016	Cycle progress indicator	Yes
Display	4 digit	End of cycle indicator	Yes
Number of buttons	5	Manual diagnostics	Yes
On/off indicator	Yes		

Construction

Tank	Deep drawn	Hood	Single skinned
Tank construction	Double skinned	Wash tank capacity	14 l
Tank material	Stainless steel AISI 304	Boiler capacity	8 l
Back panel	Galvanised	Protection class	IPX4
Tank filter	Stainless steel	Net weight (kg)	118.000 kg
Wash arm	Stainless steel AISI 304	Adjustable feet	95 mm
Rinse arm	Stainless steel AISI 304	Drain max. height	1000 mm

Consumption and connections

Tank heating element	2200 W	Water consumption per cycle	2,7 l
Boiler heating element	9000 W	Warm water connection	Cold 15°C
Wash pump	700 W	Inlet water maximum temperature	60°C
Default connection	9700 W	Max water hardness	12°FH - 7°dH
Electrical connection options	230 V 3~ / 28 A / 9,7 kW / 50 Hz; 230 V~ / 16 A / 3,7 kW / 50 Hz (NC); 230 V~ / 29 A / 6,7 kW / 50 Hz	Water inlet pressure	1-6 bar / 100-600 kPa

Manuals and Certifications

Certificate	CE
--------------------	----

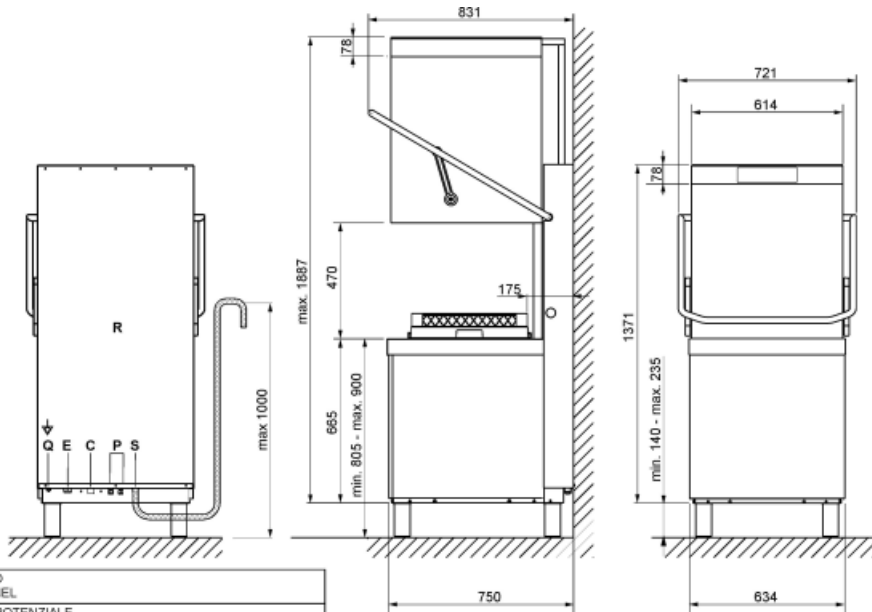
Equipment

Peristaltic detergent pump	Yes, electronic control	Chemical dosing	gr/lt
Detergent (red) hose length	Yes, manual	Drain pump with 3 stage filter system	Yes
Peristaltic rinse aid pump	Yes, electronic control	Rinse pump with H.T.R. system	Rinse pump with atmospheric boiler
Detergent flow rate	1.5 l/h	Break tank	Yes
Rinse aid (blue) hose length	Yes, manual	Partial water exchange in the wash tank via built-in drain pump	Yes
Rinse aid flow rate	0.4 l/h	Water supply pipe diameter	16 mm
Soft Start	Yes	Drain supply pipe diameter	21.5 mm
Boiler thermostat	Yes		
Cycle counter	Yes		

Automatic start	Yes
1/1GN tray washing option	Yes

Accessories Included

Plate basket	PB50D01	Water supply pipe	Yes - 2m
Cutlery basket	PHOOS02	Drain pipe	Yes - 2m
Flat basket	PB50G02		



R	PANNELLO RETRO LOWER BACK PANEL
Q	MORSETTO EQUIPOTENZIALE EARTH TERMINAL
P	TUBI POMPE PERISTALTICHE PERISTALTIC HOSES
E	CAVO ALIMENTAZIONE ELETTRICA ELECTRICITY SUPPLY CABLE
S	TUBO DI SCARICO DRAIN HOSE
T	ENTRATA CAVO DI ALIMENTAZIONE DOSATORE ESTERNO EXTERNAL DISPENSER POWER CABLE ENTRY POINT
C	TUBO DI CARICO FILLER HOSE

Not included accessories



WT5700SR

Entry table right side 700mm



WTX51200

Exit table both sides 1200mm



PHOOS03

Basket in polypropylene with 6 compartments for cutlery for Capote

WG4646

Grid for light objects, 460x460 mm



WH00S01

Wire insert for 12 small dishes



WTX5700R

Exit table right side 700mm



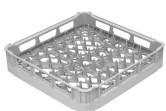
WTX51200L

Exit table left side 1200mm



WB50G01

Universal wire basket with flat bottom 500x500



PB50D01

Basket made of polypropylene for 18 plates 500x500



WH00C01

Wire insert for cups



WT51200SR

Entry table right side 1200mm



WT5700SL

Entry table left side 700mm



WT51200SHL

Entry table left side 1200mm



PHOOS01

Single basket in polypropylene for cutlery



WB50T02

Wire basket for 5 trays 600x500



WT51200SHR

Entry table right side 1200mm



WT51200SL

Entry table left side 1200mm

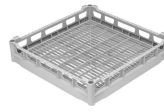


WB50G02

Wire basket for glasses with inclined bottom 500x500



WTX51200R
Exit table right side 1200mm



PB50G01
Universal basket in polypropylene
500x500



WB50G04
Wire basket for glasses with inclined
bottom 500x500



WTX5700
Exit table both sides 700mm



PHOOS02
Basket in polypropylene for cutlery with
6 compartments



WB50D01
Wire basket for 18 dishes and trays
500x500



WB50G03
Wire basket for glasses with inclined
bottom 500x500



WTX5700L
Exit table left side 700mm

Symbols glossary



Suitable for 1/1GN trays



HTR rinsing system



Triple filter

