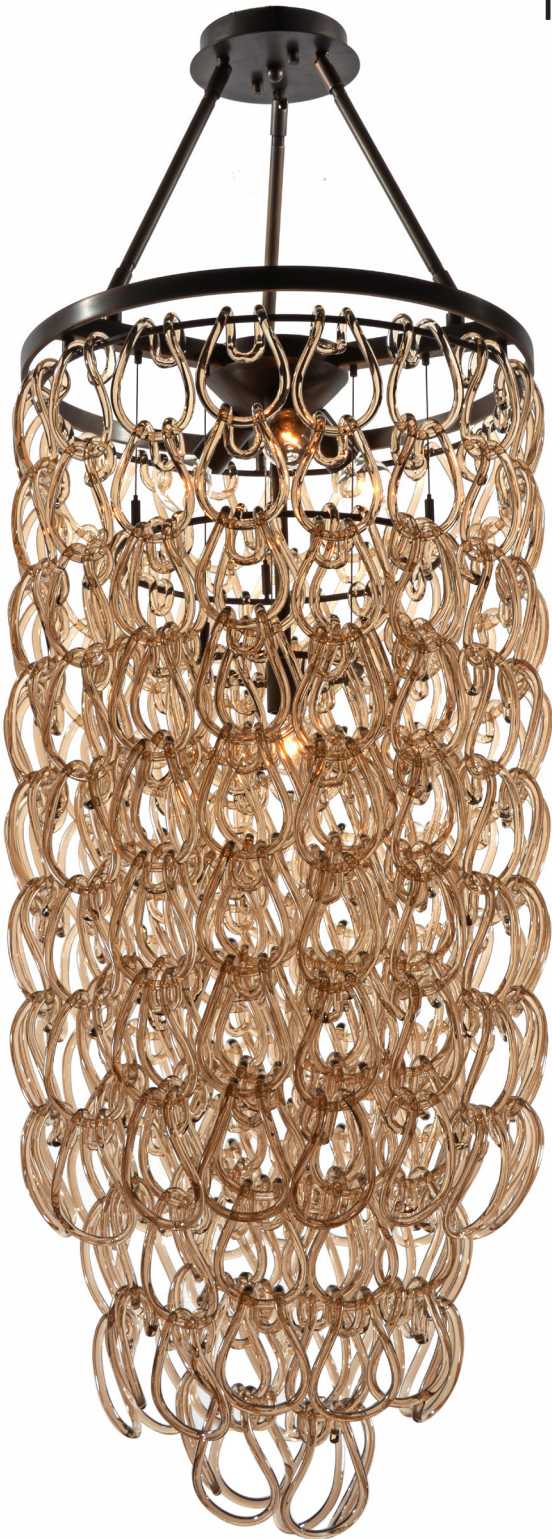


TESSA



LUXE

TESSA - Alto

Tiers of hand blown glass links in three classic finishes create translucent texture and color. Like the warp and weave of finely woven fabric, Tessa brings movement, light and shadow to your environment.

LUXE lighting collections are handcrafted from the finest materials, combining classic motifs with contemporary flair to create signature illuminated features that are equal part light and art. Balancing light and shadow, color and clarity, each LUXE lighting fixture is a one of a kind creation.

NAME
(TS) TESSA

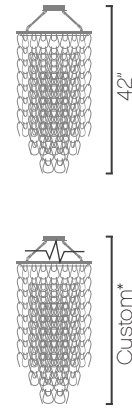
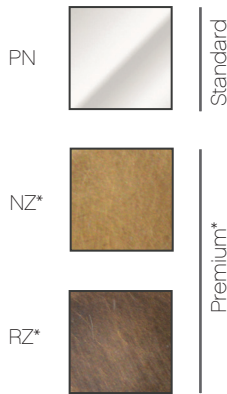
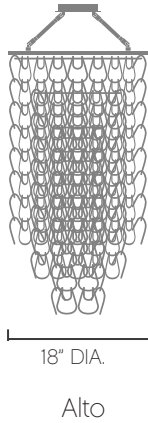
MODEL
(M18) Alto

METAL FINISHES
(PN) Polished Nickel
(NZ) Natural Bronze*
(RZ) Oil-Rubbed Bronze*

OVERALL HEIGHT
42"
(HX) Custom*

GLASS COLOR
(CL) Cristale
(CH) Champagne
(AM) Amber*

TESSA
by Thomas Cooper Studio



Lamping: M18 (4) E12 60W Max, 120V Dimmable
(LED and and Antique style bulbs also available)
UL listed (or equivalent) for damp location

*Indicates custom or premium options available.

SPECIFICATION SELECTION: _____ TS _____ • _____ M18 _____ • _____

PROJECT NAME: _____ DATE: _____

NOTES: _____



3400 MEDFORD STREET. LOS ANGELES, CA 90063
TEL 323-227-9207 SALES@LUXELIGHTANDHOME.COM

Spring 2018

TESSA



LUXE

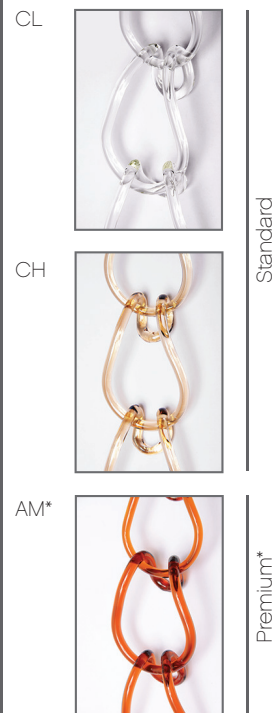
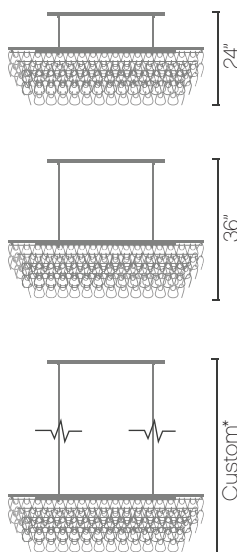
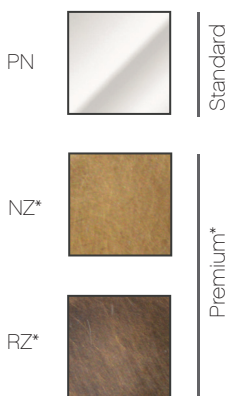
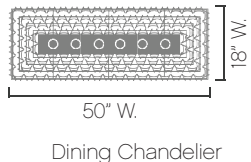
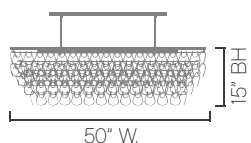
TESSA - Dining Chandelier

Tiers of hand-blown glass links in three classic finishes create translucent texture and color. Like the warp and weave of finely woven fabric, Tessa brings movement, light and shadow to your environment.

LUXE lighting collections are handcrafted from the finest materials, combining classic motifs with contemporary flair to create signature illuminated features that are equal part light and art. Balancing light and shadow, color and clarity, each LUXE lighting fixture is a one of a kind creation.

<u>NAME</u>	<u>MODEL</u>	<u>METAL FINISHES</u>	<u>OVERALL HEIGHT</u>	<u>GLASS COLOR</u>
(TS) TESSA	(D50) Dining Chandelier	(PN) Polished Nickel (NZ) Natural Bronze* (RZ) Oil Rubbed Bronze*	24" 36" (HX) Custom*	(CL) Cristale (CH) Champagne (AM) Amber*

TESSA
 by Thomas Cooper Studio



Lamping: D50 (6) E12 60W Max, 120V Dimmable
 (LED and Antique style bulbs also available)
 UL listed (or equivalent) for damp location

*Indicates custom or premium options available.

SPECIFICATION SELECTION: TS • D50 • _____ • _____ • _____

PROJECT NAME: _____ DATE: _____

NOTES: _____



3400 MEDFORD STREET, LOS ANGELES, CA 90063
 TEL 323-227-9207 SALES@LUXELIGHTANDHOME.COM

TESSA



LUXE

TESSA - Grande

Tiers of hand blown glass links in three classic finishes create translucent texture and color. Like the warp and weave of finely woven fabric, Tessa brings movement, light and shadow to your environment.

LUXE lighting collections are handcrafted from the finest materials, combining classic motifs with contemporary flair to create signature illuminated features that are equal part light and art. Balancing light and shadow, color and clarity, each LUXE lighting fixture is a one of a kind creation.

NAME
(TS) TESSA

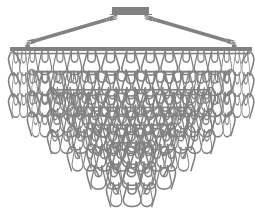
MODEL
(M36) Grande

METAL FINISHES
(PN) Polished Nickel
(NZ) Natural Bronze*
(RZ) Oil Rubbed Bronze*

OVERALL HEIGHT
30"
(HX) Custom*

GLASS COLOR
(CL) Cristale
(CH) Champagne
(AM) Amber*

TESSA
by Thomas Cooper Studio



36" DIA.
Grande

PN



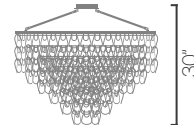
Standard

NZ*

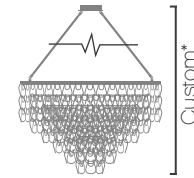


Premium*

RZ*



30"



Custom*

CL



Standard

CH



AM*



Premium*

Lamping: M36 (7) E12 60W Max, 120V Dimmable
(LED and Antique style bulbs also available)
UL listed (or equivalent) for damp location

*Indicates custom or premium options available.

SPECIFICATION SELECTION: _____ TS _____ • _____ M36 _____ • _____ • _____

PROJECT NAME: _____ DATE: _____

NOTES: _____



3400 MEDFORD STREET. LOS ANGELES, CA 90063
TEL 323-227-9207 SALES@LUXELIGHTANDHOME.COM

Spring 2018

TESSA



LUXE

TESSA - Piccolo

Tiers of hand blown glass links in three classic finishes create translucent texture and color. Like the warp and weave of finely woven fabric, Tessa brings movement, light and shadow to your environment.

LUXE lighting collections are handcrafted from the finest materials, combining classic motifs with contemporary flair to create signature illuminated features that are equal part light and art. Balancing light and shadow, color and clarity, each LUXE lighting fixture is a one of a kind creation.

NAME
(TS) TESSA

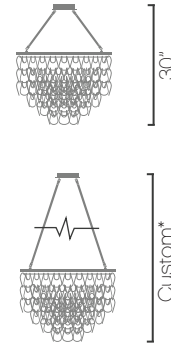
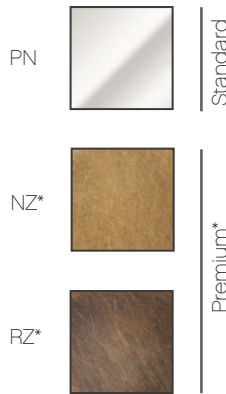
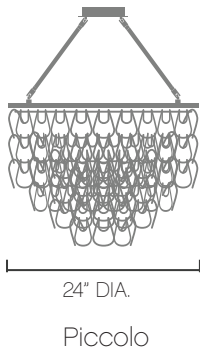
MODEL
(M24) Piccolo

METAL FINISHES
(PN) Polished Nickel
(NZ) Natural Bronze*
(RZ) Oil Rubbed Bronze*

OVERALL HEIGHT
30"
(HX) Custom*

GLASS COLOR
(CL) Cristale
(CH) Champagne
(AM) Amber*

TESSA
by Thomas Cooper Studio



Lamping: M24 (5) E12 60W Max, 120V Dimmable
(LED and Antique style bulbs also available)
UL listed (or equivalent) for damp location

*Indicates custom or premium options available.

SPECIFICATION SELECTION: TS • M24 • _____ • _____

PROJECT NAME: _____ DATE: _____

NOTES: _____



3400 MEDFORD STREET. LOS ANGELES, CA 90063
TEL 323-227-9207 SALES@LUXELIGHTANDHOME.COM

Spring 2018

TESSA



LUXE

TESSA - Sconce

Tiers of hand blown glass knots in three classic finishes create translucent texture and color. Like the warp and weave of finely woven fabric, TESSA brings movement, light and shadow to your environment.

LUXE lighting collections are handcrafted from the finest materials, combining classic motifs with contemporary flair to create signature illuminated features that are equal part light and art. Balancing light and shadow, color and clarity, each LUXE lighting fixture is a one of a kind creation.

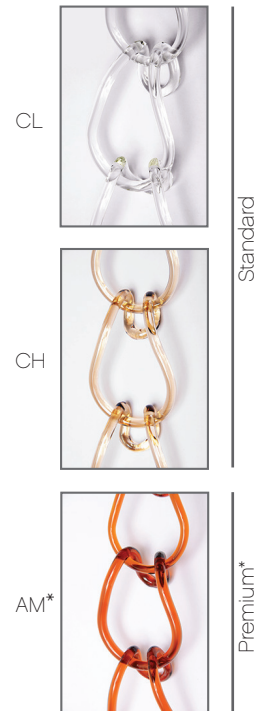
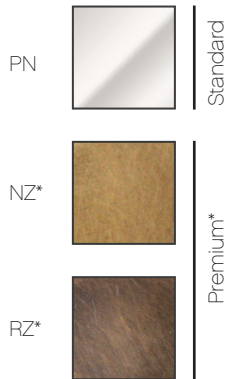
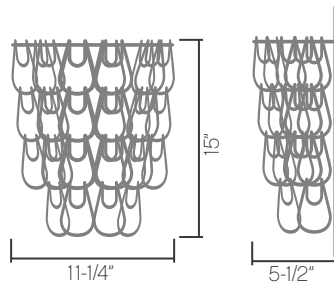
NAME
(TS) TESSA

MODEL
(SC) Sconce

METAL FINISHES
(PN) Polished Nickel
(NZ) Natural Bronze*
(RZ) Oil Rubbed Bronze*

GLASS COLOR
(CL) Cristale
(CH) Champagne
(AM) Amber*

TESSA
by Thomas Cooper Studio



Lamping: SC (2) 25-60W E12, 120V Dimmable
(LED and Antique style Edison bulbs available)
UL listed (or equivalent) for dry location

*Indicates custom or premium options available.

SPECIFICATION SELECTION: _____ TS _____ • _____ SC _____ • _____

PROJECT NAME: _____ DATE: _____

NOTES: _____

