

DM-TFTR21-477-2

2.1" 480X 480 Round 350 nits TFT - IPS

I General specifications

Specs	parameters	Description
Display mode	TFT LCD	IPS
Backlight Type	LED	
Dimension	LCM:R28.09 *2.3(H) Driverboard:48(L)*32.2(W)	mm
Color	262K	RGB18bit
Brightness	350 cd/m ²	
Active Area(mm)	Radius=26.64mm	2.1inch
Touch panel type	NO	
Resolution	480RGB×480	
Other hardware	/	/
Special feature	video play/boot video	Up to 1080p with most video formats

I Environment and Electrical Characteristics

specs	parameters
Input voltage range	5VDC
Power consumption	5V/100mA (Maximum brightness)
Working temperature	-20°C~+60°C
Storage temperature	-30°C~+70°C
Working humidity	10%~90%RH
Three anti-treatment	NO

I Communication interface parameter

specs	parameters	
Communication interface type	UART with 3.3V TTL level, follow TGUS® protocol	
Serial baud rate	Minimum value	2400
	Typical value	9600
	Maximum value	115200
Data format	1 start bit -8 data bits - no parity bit -1 stop bit (8N1)	
Micro USB	To update the firmware and UI	
Users connection interface	10pin 1.0mm- pitch ZIF	

I Memory parameters

Parameters	Description	Applications
FLASH memory	SPI FLASH(16MB) on board	10MB for users to store picture, font ,icon, boot video..

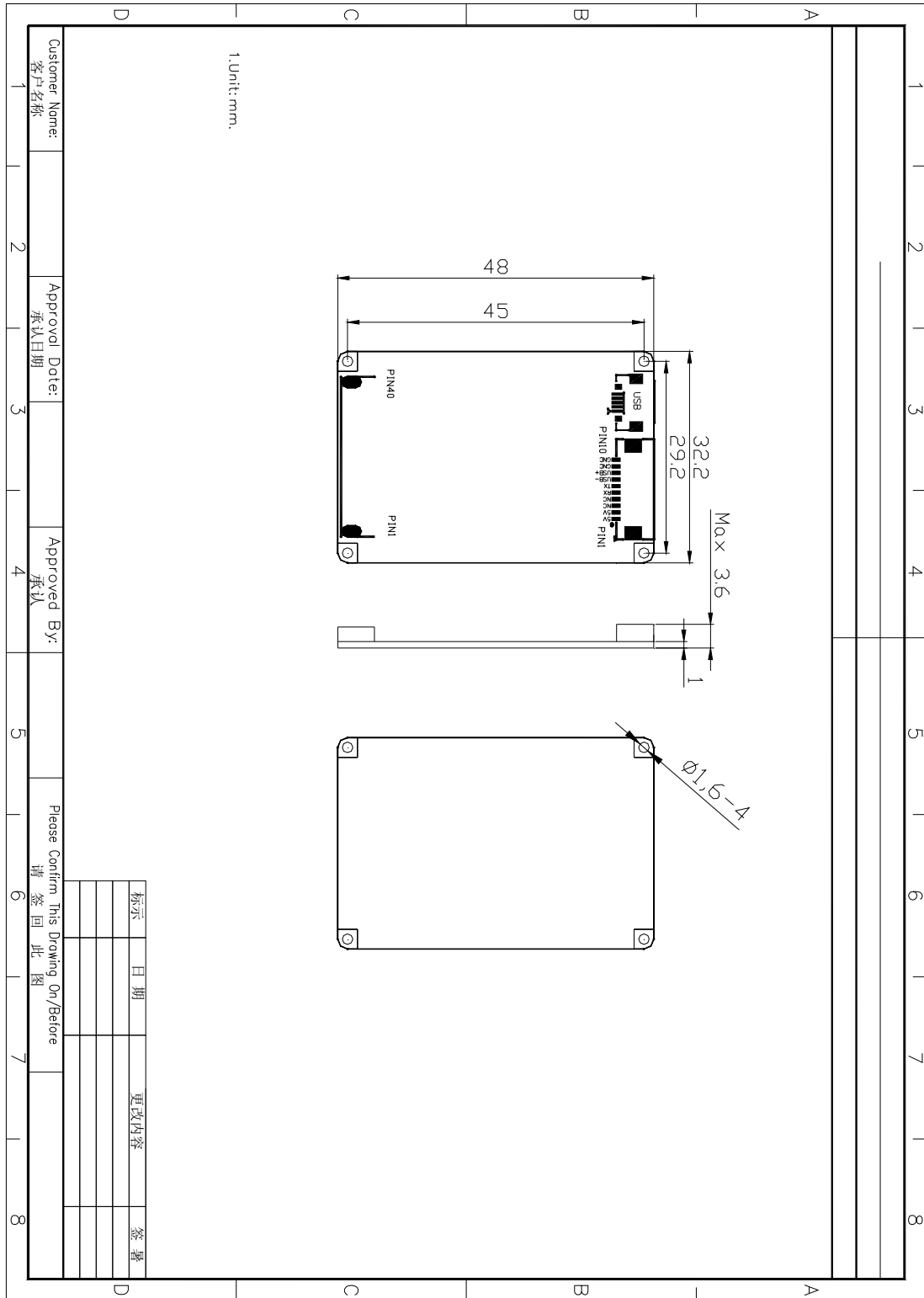
I Pin description

10pin 1.0mm pitch ZIF (bottom contact)

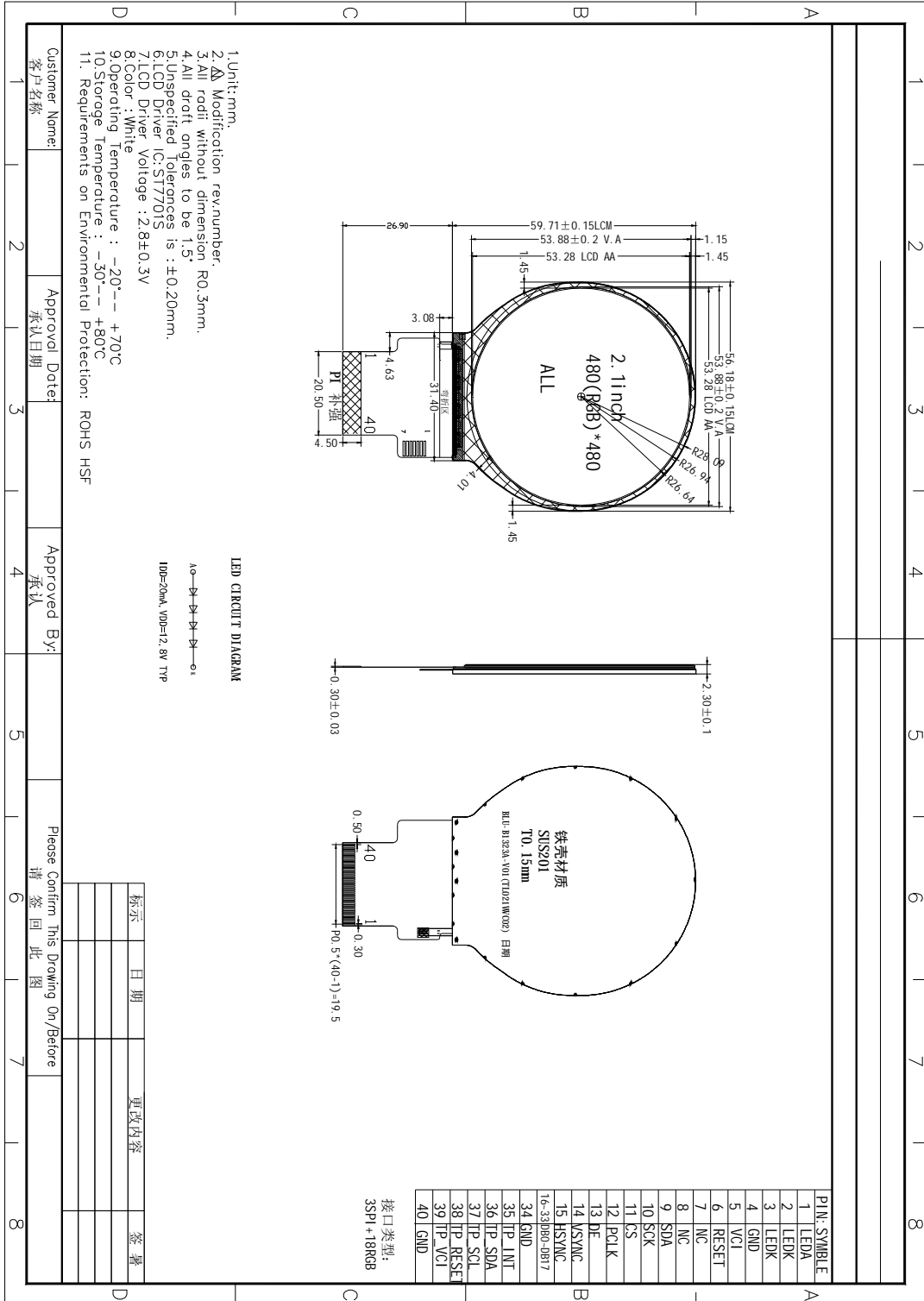
Pin Assignment	Pin Name	Type	Description
1,2,	VCC	P	5Vdc
3,4,	NC		NC
5	RXD	Input	UART Receive ,Connect to TXD of USER
6	TXD	Output	UART Transmit, Connect to RXD of USER
7	DM		USB-DM
8	DP		USB-DP
9,10	GND	P	GND

I Drawing

1> Driver board PCB Drawing



2> LCD +CTP Drawing



3> LCM+CTP+DRIVER BOARD

