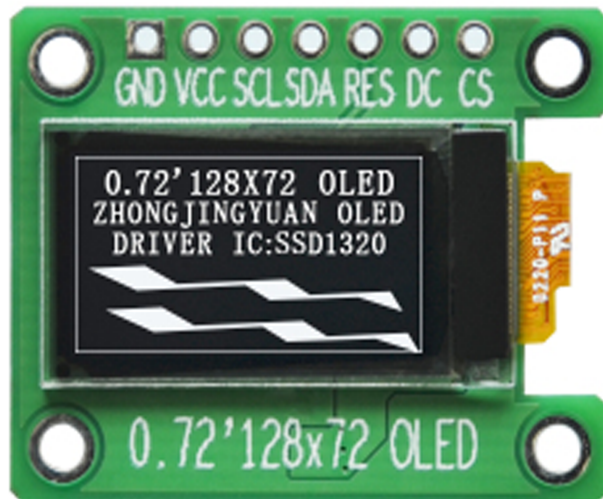


# DisplayModule



DM-OLED072-689

0.72" 128 x 72 All View Monochrome OLED - SPI



## **Contents**

<b>Revision History</b> .....	<b><i>i</i></b>
<b>Contents</b> .....	<b><i>ii</i></b>
<b>1. Basic Specifications</b> .....	<b>1~4</b>
1.1 Display Specifications .....	1
1.2 Mechanical Specifications.....	1
1.3 Active Area / Memory Mapping & Pixel Construction .....	1
1.4 Mechanical Drawing.....	2
1.5 Pin Definition .....	4
<b>2. Absolute Maximum Ratings</b> .....	<b>5</b>
<b>3. Optics &amp; Electrical Characteristics</b> .....	<b>6~7</b>
3.1 Optics Characteristics.....	6
3.2 DC Characteristics .....	7
3.3 AC Characteristics.....	8
<b>4. Functional Specification</b> .....	<b>9~12</b>
4.1 Commands .....	9
4.2 Power down and Power up Sequence.....	9
4.2.1 Power up Sequence .....	9
4.2.2 Power down Sequence.....	9
4.3 Reset Circuit .....	9
4.4 Application Circuit.....	10
4.5 Actual Application Example.....	11
<b>5. Reliability</b> .....	<b>13</b>
5.1 Contents of Reliability Tests .....	13
5.2 Failure Check Standard .....	13
<b>6. Outgoing Quality Control Specifications</b> .....	<b>14~17</b>
6.1 Environment Required .....	14
6.2 Sampling Plan .....	14
6.3 Criteria & Acceptable Quality Level.....	14
6.3.1 Cosmetic Check (Display Off) in Non-Active Area.....	14
6.3.2 Cosmetic Check (Display Off) in Active Area.....	16
6.3.3 Pattern Check (Display On) in Active Area .....	17
<b>7. Package Specifications</b> .....	<b>18</b>
<b>8. Precautions When Using These OEL Display Modules</b> .....	<b>19~21</b>
8.1 Handling Precautions .....	19
8.2 Storage Precautions.....	19
8.3 Designing Precautions.....	20
8.4 Precautions when disposing of the OEL display modules .....	20
8.5 Other Precautions.....	20
<b>Warranty</b> .....	<b>21</b>
<b>Notice</b> .....	<b>21</b>

## 1. Basic Specifications

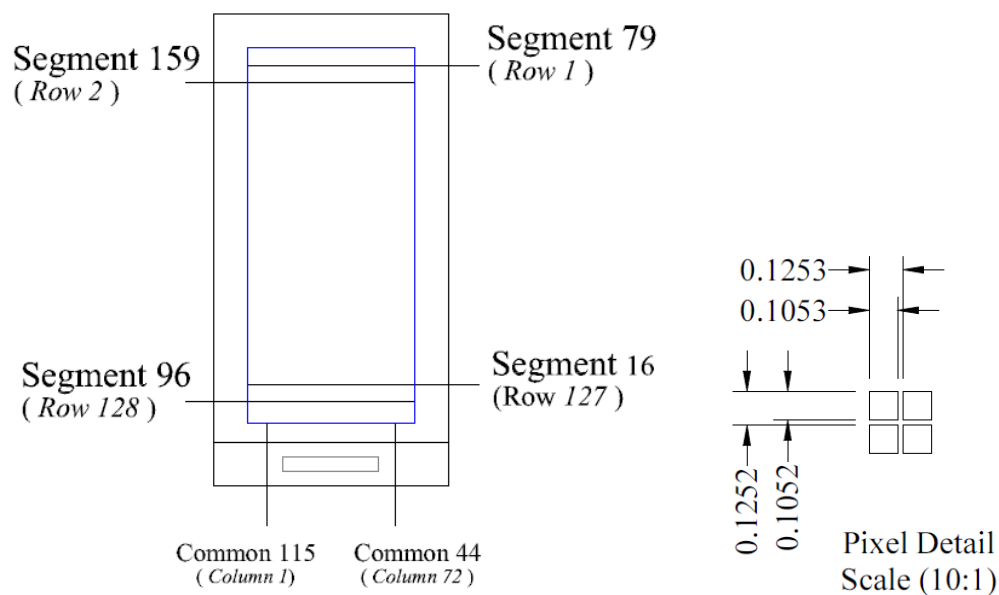
### 1.1 Display Specifications

- 1) Display Mode : Passive Matrix
- 2) Display Color : Monochrome (White / 16 Gray Scales)
- 3) Drive Duty : 1/72 Duty

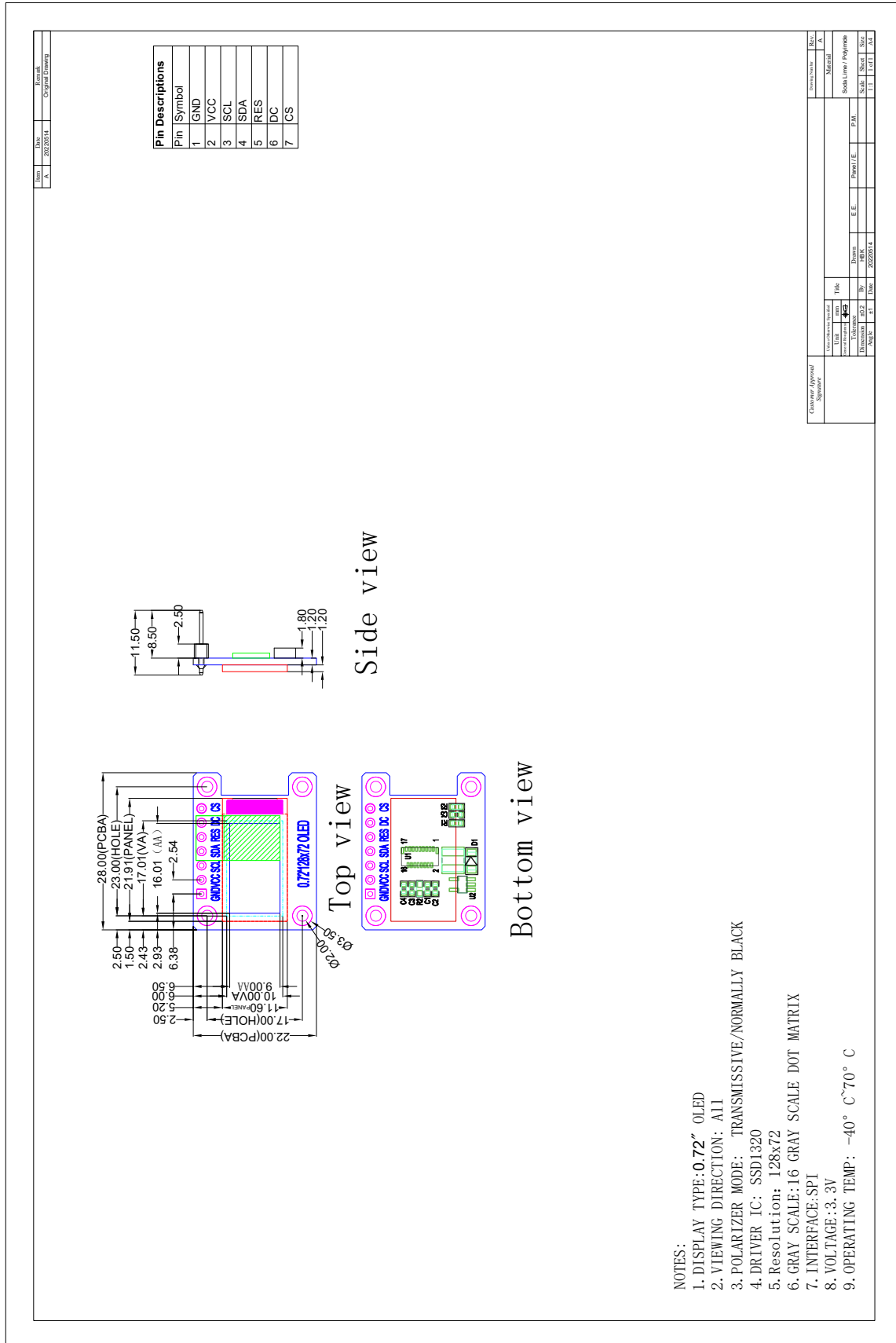
### 1.2 Mechanical Specifications

- 1) Outline Drawing : According to the annexed outline drawing
- 2) Number of Pixels : 128 × 72
- 3) Module Size : **28x22x4.2 (mm)** (Thickness tolerance ± 0.15 mm)
- 4) Panel Size : 11.60 × 21.91 × 1.20 (mm) (Thickness tolerance ± 0.1 mm)
- 5) Active Area : 9.002 × 16.006 (mm)
- 6) Pixel Pitch : 0.1253 × 0.1252 (mm)
- 7) Pixel Size : 0.1053 × 0.1052 (mm)
- 8) Weight : 3.65 (g) ± 10%

### 1.3 Active Area / Memory Mapping & Pixel Construction



1.4 Mechanical Drawing



- NOTES:
1. DISPLAY TYPE: 0.72" OLED
  2. VIEWING DIRECTION: ALL
  3. POLARIZER MODE: TRANSMISSIVE/NORMALLY BLACK
  4. DRIVER IC: SSD1320
  5. Resolution: 128x72
  6. GRAY SCALE: 16 GRAY SCALE DOT MATRIX
  7. INTERFACE: SPI
  8. VOLTAGE: 3.3V
  9. OPERATING TEMP: -40° C ~ 70° C

## 1.5 Pin Definition

Pin Number	Symbol	I/O	Function
<b>Power Supply</b>			
<b>1</b>	<b>GND</b>	<b>P</b>	<b>Ground</b> This is a ground pin. It acts as a reference for the logic pins. It must be connected to external ground.
<b>2</b>	<b>VCC</b>	<b>P</b>	<b>Power Supply for Core and I/O</b> This is a voltage supply pin. It must be connected to external source 3.3V.
<b>Interface</b>			
<b>3</b>	<b>SCL</b>	<b>I</b>	<b>Host Data Input/Output Bus</b> When SPI mode is selected, SCL is the serial clock input, SPI CLK. When I2C mode is selected, SCL is the serial clock input, I2C SCL.
<b>4</b>	<b>SDA</b>	<b>I</b>	<b>Host Data Input/Output Bus</b> When SPI mode is selected, SDA is the serial data input, SPI DATA(MOSI). When I2C mode is selected, SDA is the serial data input, I2C SDA.
<b>5</b>	<b>RES</b>	<b>I</b>	<b>Power Reset for Controller and Driver</b> This pin is reset signal input. When the pin is low, initialization of the chip is executed. Keep this pin pull high during normal operation.
<b>6</b>	<b>DC</b>	<b>I</b>	<b>Data/Command Control</b> When the pin is pulled high and serial interface mode is selected, the data at SDIN will be interpreted as data. When it is pulled low, the data at SDIN will be transferred to the command register.
<b>7</b>	<b>CS</b>	<b>I</b>	<b>Chip Select</b> This pin is the chip select input. The chip is enabled for MCU communication only when CS# is pulled low.

## 2. Absolute Maximum Ratings

Parameter	Symbol	Min	Max	Unit	Notes
Supply Voltage for Logic	V <sub>CC</sub>	3	3.5	V	
Operating Temperature	T <sub>OP</sub>	-40	70	°C	
Storage Temperature	T <sub>STG</sub>	-40	80	°C	3
LT50 (@500cd/m <sup>2</sup> ) Time to drop 50% from initial Luminance	LT50	3600	-	hour	4
LT93 (@500cd/m <sup>2</sup> ) Time to drop 7% from initial Luminance	LT93	280	-	hour	

Note 1: All the above voltages are on the basis of "V<sub>SS</sub> = 0V".

Note 2: When this module is used beyond the above absolute maximum ratings, permanent breakage of the module may occur. Also, for normal operations, it is desirable to use this module under the conditions according to Section 3. "Optics & Electrical Characteristics". If this module is used beyond these conditions, malfunctioning of the module can occur and the reliability of the module may deteriorate.

Note 3: The defined temperature ranges do not include the polarizer. The maximum withstood temperature of the polarizer should be 80°C.

Note 4: V<sub>CC</sub> = 13.0V, T<sub>a</sub> = 25°C, 50% Checkerboard. Software configuration follows Section 4.5 Initialization. End of lifetime is specified as 50% of initial brightness reached. The average operating lifetime at room temperature is estimated by the accelerated operation at high temperature conditions.

Command Description	instruction
Set Display Clock Divide Ratio/Oscillator Frequency	0xD5, 0x11
Set Multiplex Ratio	0xA8, 0x47
Set Contrast Control	0x81, 0xDF
Set Pre-Charge Period	0xD9, 0x72
Set VCOMH Deselect Level	0xDB, 0x20
Set Internal IREF Enable	0xAD, 0x00
Set Pre-charge Voltage	0xBC, 0x1E

### 3. Optics & Electrical Characteristics

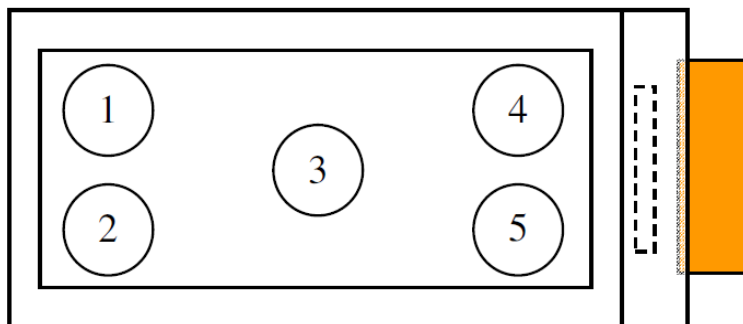
#### 3.1 Optics Characteristics

Characteristics	Symbol	Conditions	Min	Typ	Max	Unit
Brightness	$L_{br}$	Note 5, with T/P	400	500	-	cd/m <sup>2</sup>
C.I.E. (White)	(x) (y)	C.I.E. 1931	0.28 0.30	0.31 0.33	0.34 0.36	-
Dark Room Contrast	CR		>10,000:1	-	-	-
Viewing Angle	-		160	-	-	degree
Luminance uniformity	-		70%	-	-	-

Software configuration follows Section 4.5 Initialization.

\* Definition of Luminance uniformity

- Brightness measure locations: point 1 ~ point 5 (Refer to below figure)
- Luminance uniformity = (Min brightness / Max. Brightness)\*100%





## 3.2 DC Characteristics

Characteristics	Symbol	Conditions	Min	Typ	Max	Unit
Supply Voltage for Logic	$V_{DD}$		3	3.3	3.5	V
Operating Current for $V_{CC}$	$I_{CC}$	Note 6	-	52	64	mA
		Note 7	-	81	108	mA
		Note 8	-	148	200	mA
Sleep Mode Current for $V_{DD}$	$I_{DD, SLEEP}$		-	1	10	$\mu$ A
Sleep Mode Current for $V_{CC}$	$I_{CC, SLEEP}$		-	2	10	$\mu$ A

Note 5: Brightness ( $L_{br}$ ) and Supply Voltage for Display ( $V_{CC}$ ) are subject to the change of the panel characteristics and the customer's request.

\* Software configuration follows Section 4.5 Initialization.

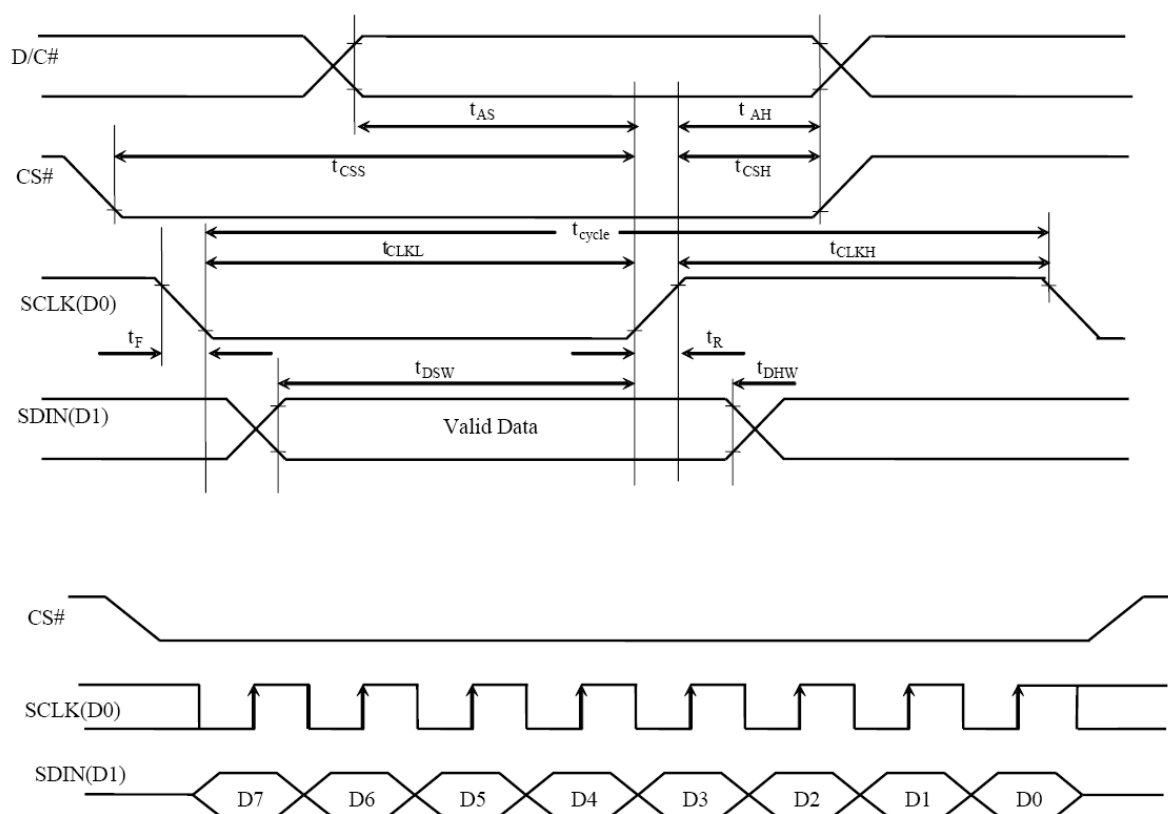
Command Description	instruction
Set Display Clock Divide Ratio/Oscillator Frequency	0xD5, 0x11
Set Multiplex Ratio	0xA8, 0x47
Set Contrast Control	0x81, 0xDF
Set Pre-Charge Period	0xD9, 0x72
Set VCOMH Deselect Level	0xDB, 0x20
Set Internal IREF Enable	0xAD, 0x00
Set Pre-charge Voltage	0xBC, 0x1E

### 3.3 AC Characteristics

#### Serial Interface Timing Characteristics: (4-wire SPI)

Symbol	Description	Min	Max	Unit
$t_{\text{cycle}}$	Clock Cycle Time	66	-	ns
$t_{\text{AS}}$	Address Setup Time	15	-	ns
$t_{\text{AH}}$	Address Hold Time	15	-	ns
$t_{\text{CSS}}$	Chip Select Setup Time	20	-	ns
$t_{\text{CSH}}$	Chip Select Hold Time	10	-	ns
$t_{\text{DSW}}$	Write Data Setup Time	15	-	ns
$t_{\text{DHW}}$	Write Data Hold Time	16	-	ns
$t_{\text{CLKL}}$	Clock Low Time	20	-	ns
$t_{\text{CLKH}}$	Clock High Time	20	-	ns
$t_{\text{R}}$	Rise Time	-	15	ns
$t_{\text{F}}$	Fall Time	-	15	ns

\* ( $V_{\text{DD}} - V_{\text{SS}} = 1.65\text{V to } 3.3\text{V}$ ,  $T_a = 25^\circ\text{C}$ )



## 4. Functional Specification

### 4.1 Commands

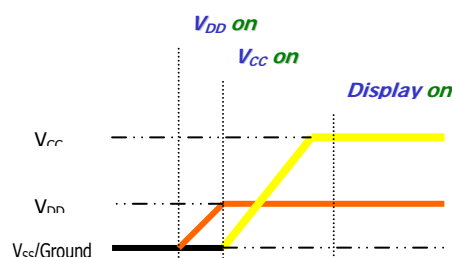
Refer to the Technical Manual for the SSD1320

### 4.2 Power down and Power up Sequence

To protect OEL panel and extend the panel life time, the driver IC power up/down routine should include a delay period between high voltage and low voltage power sources during turn on/off. It gives the OEL panel enough time to complete the action of charge and discharge before/after the operation.

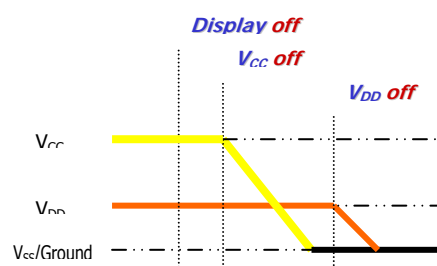
#### 4.2.1 Power up Sequence:

1. Power up  $V_{DD}$
2. Send Display off command
3. Initialization
4. Clear Screen
5. Power up  $V_{CC}$
6. Delay 100ms  
(When  $V_{CC}$  is stable)
7. Send Display on command



#### 4.2.2 Power down Sequence:

1. Send Display off command
2. Power down  $V_{CC}$
3. Delay 100ms  
(When  $V_{CC}$  is reach 0 and panel is completely discharges)
4. Power down  $V_{DD}$



#### Note 9:

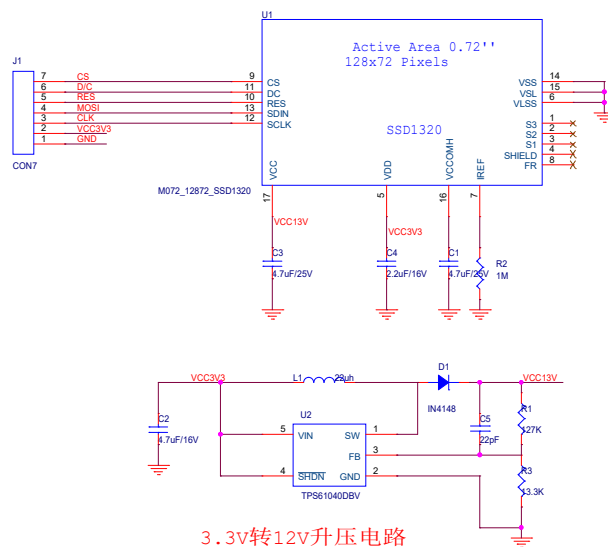
- 1) Since an ESD protection circuit is connected between  $V_{DD}$  and  $V_{CC}$  inside the driver IC,  $V_{CC}$  becomes lower than  $V_{DD}$  whenever  $V_{DD}$  is ON and  $V_{CC}$  is OFF.
- 2)  $V_{CC}$  should be kept float (disable) when it is OFF.
- 3) Power Pins ( $V_{DD}$ ,  $V_{CC}$ ) can never be pulled to ground under any circumstance.
- 4)  $V_{DD}$  should not be power down before  $V_{CC}$  power down.

### 4.3 Reset Circuit

When RES# input is low, the chip is initialized with the following status:

1. Display is OFF
2. 160×160 Display Mode
3. Normal segment and display data column and row address mapping (SEG0 mapped to column address 00h and COM0 mapped to row address 00h)
4. Shift register data clear in serial interface
5. Display start line is set at display RAM address 0
6. Column address counter is set at 0
7. Normal scan direction of the COM outputs
8. Contrast control register is set at 7Fh
9. Normal display mode (Equivalent to A4h command)

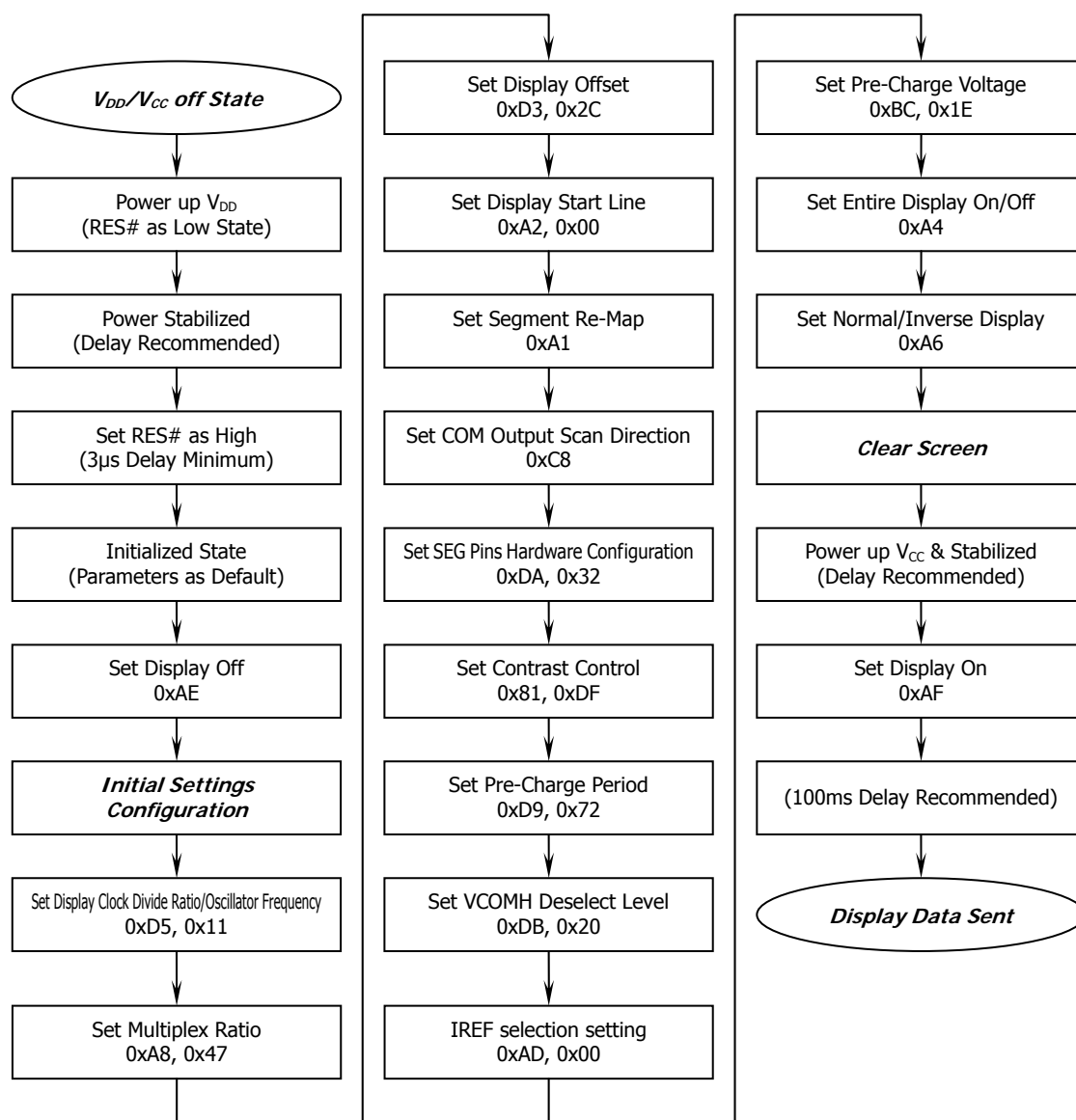
### 4.4 Application Circuit



#### 4.5 Actual Application Example

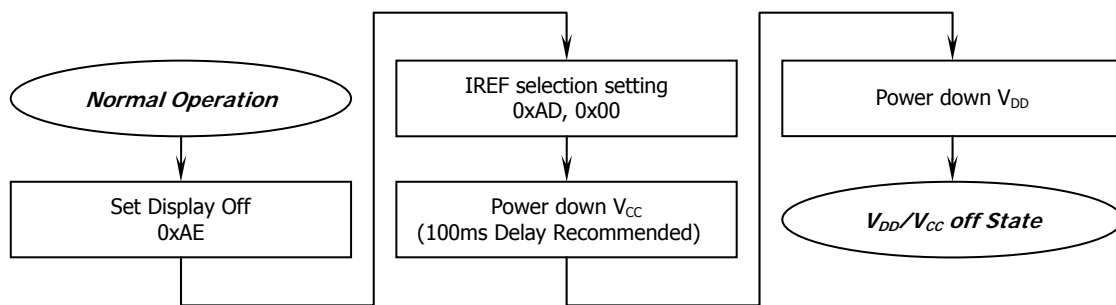
Command usage and explanation of an actual example

<Power up Sequence>

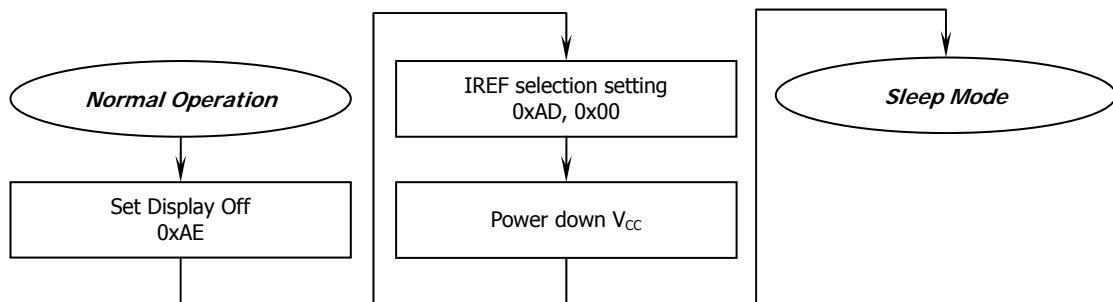


If the noise is accidentally occurred at the displaying window during the operation, please reset the display in order to recover the display function.

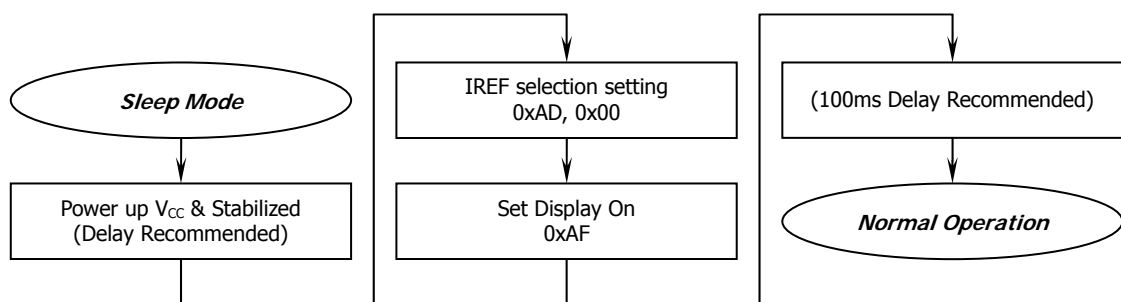
## &lt;Power down Sequence&gt;



## &lt;Entering Sleep Mode&gt;



## &lt;Exiting Sleep Mode&gt;



## 5. Reliability

### 5.1 Contents of Reliability Tests

Item	Conditions	Criteria
High Temperature Operation	70°C, 240 hrs	The operational functions work.
Low Temperature Operation	-40°C, 240 hrs	
High Temperature Storage	85°C, 240 hrs	
Low Temperature Storage	-40°C, 240 hrs	
High Temperature/Humidity Operation	60°C, 90% RH, 120 hrs	
Thermal Shock	-40°C ↔ 85°C, 100 cycles 60 mins dwell	

\* The samples used for the above tests do not include polarizer.

\* No moisture condensation is observed during tests.

### 5.2 Failure Check Standard

After the completion of the described reliability test, the samples were left at room temperature for 2 hrs prior to conducting the failure test at 23±5°C; 55±15% RH.

## 6. Outgoing Quality Control Specifications

### 6.1 Environment Required

Customer's test & measurement are required to be conducted under the following conditions:

Temperature:	$23 \pm 5^{\circ}\text{C}$
Humidity:	$55 \pm 15\% \text{ RH}$
Fluorescent Lamp:	30W
Distance between the Panel & Lamp:	$\geq 50\text{cm}$
Distance between the Panel & Eyes of the Inspector:	$\geq 30\text{cm}$
Finger glove (or finger cover) must be worn by the inspector.	
Inspection table or jig must be anti-electrostatic.	

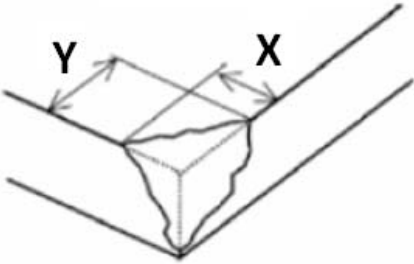
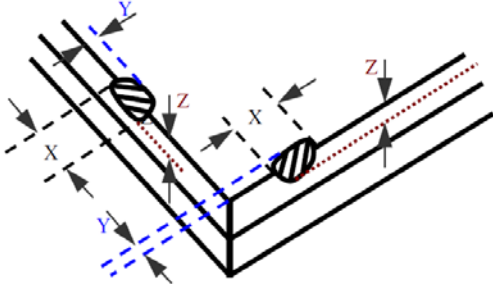
### 6.2 Sampling Plan

Level II, Normal Inspection, Single Sampling, MIL-STD-105E

### 6.3 Criteria & Acceptable Quality Level

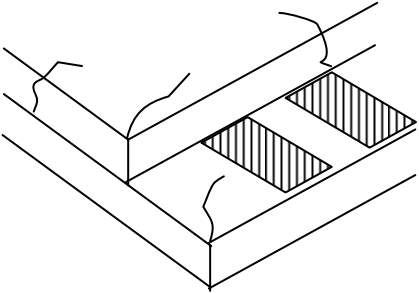

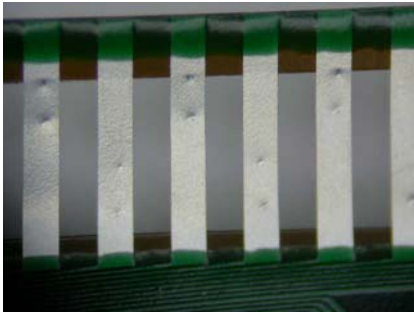
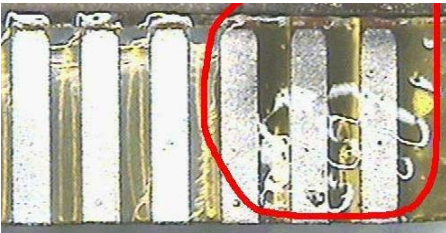
Partition	AQL	Definition
Major	0.4	Defects in Pattern Check (Display On)
Minor	0.65	Defects in Cosmetic Check (Display Off)

#### 6.3.1 Cosmetic Check (Display Off) in Non-Active Area

Check Item	Classification	Criteria
Panel Chipping on corner	Minor	<p><math>X \leq 1.2 \text{ mm}</math> (Not allow to extend AA zone.)  <math>Y \leq 2 \text{ mm}</math>  <math>Z \leq t</math> (glass thickness)</p> 
Panel Chipping on edge	Minor	<p><math>X \leq 3 \text{ mm}</math> (Along with Edge)  <math>Y \leq 1.0 \text{ mm}</math> (Perpendicular to edge)  <math>Z \leq t</math> (glass thickness)</p> 



## 6.3.1 Cosmetic Check (Display Off) in Non-Active Area (Continued)

Check Item	Classification	Criteria
Panel Crack	Minor	Any crack is not allowable. 
Copper Exposed (Even Pin or Film)	Minor	Not Allowable by Naked Eye Inspection
Film or Trace Damage	Minor	
Terminal Lead Prober Mark	Acceptable	
Glue or Contamination on Pin (Couldn't Be Removed by Alcohol)	Minor	
Ink Marking on Back Side of panel (Exclude on Film)	Acceptable	Ink Marking indistinct, fragmented or No Ink Marking are Acceptable
Scratches, Foreign Material (On Polarizer)	Acceptable	Ignore for Any

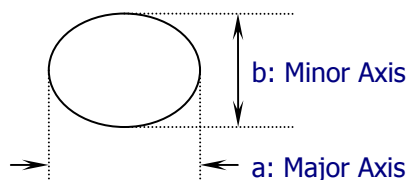
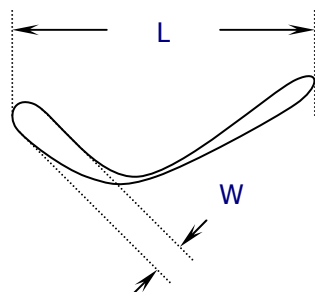
## 6.3.2 Cosmetic Check (Display Off) in Active Area

It is recommended to execute in clear room environment (class 10k) if actual in necessary.


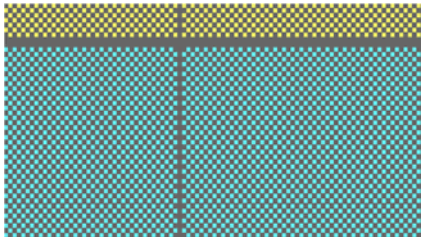
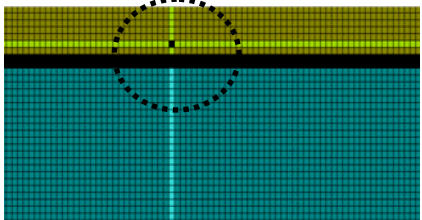
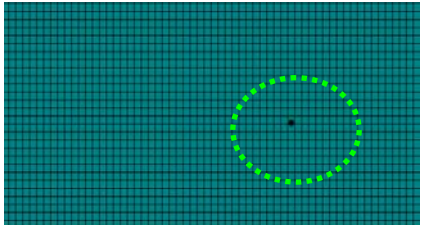
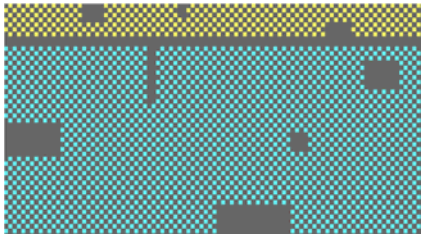
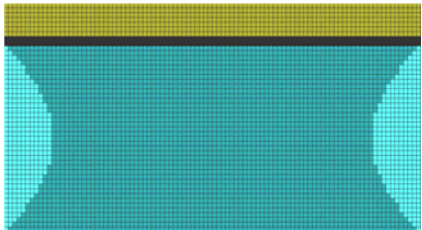
Check Item	Classification	Criteria
Any Dirt & Scratch on Polarizer's Protective Film	Acceptable	Ignore for not Affect the Polarizer
Scratches, Fiber, Line-Shape Defect	Minor	$W < 0.03$ Ignore $0.03 < W \leq 0.1$ $L \leq 2, n \leq 2, \text{Distance} > 15$ $L > 2, n = 0$
Dirt, Black Spot, Bubbles, White spot Foreign Material	Minor	$\Phi \leq 0.2, n \leq 2, \text{Distance} > 15$ $\Phi \leq 0.10, n \leq 3$ $0.15 < \Phi, \text{Not Allowable}$
Fingerprint, Flow Mark (On Polarizer)	Minor	Not Allowable

\* Protective film should not be tear off when cosmetic check.

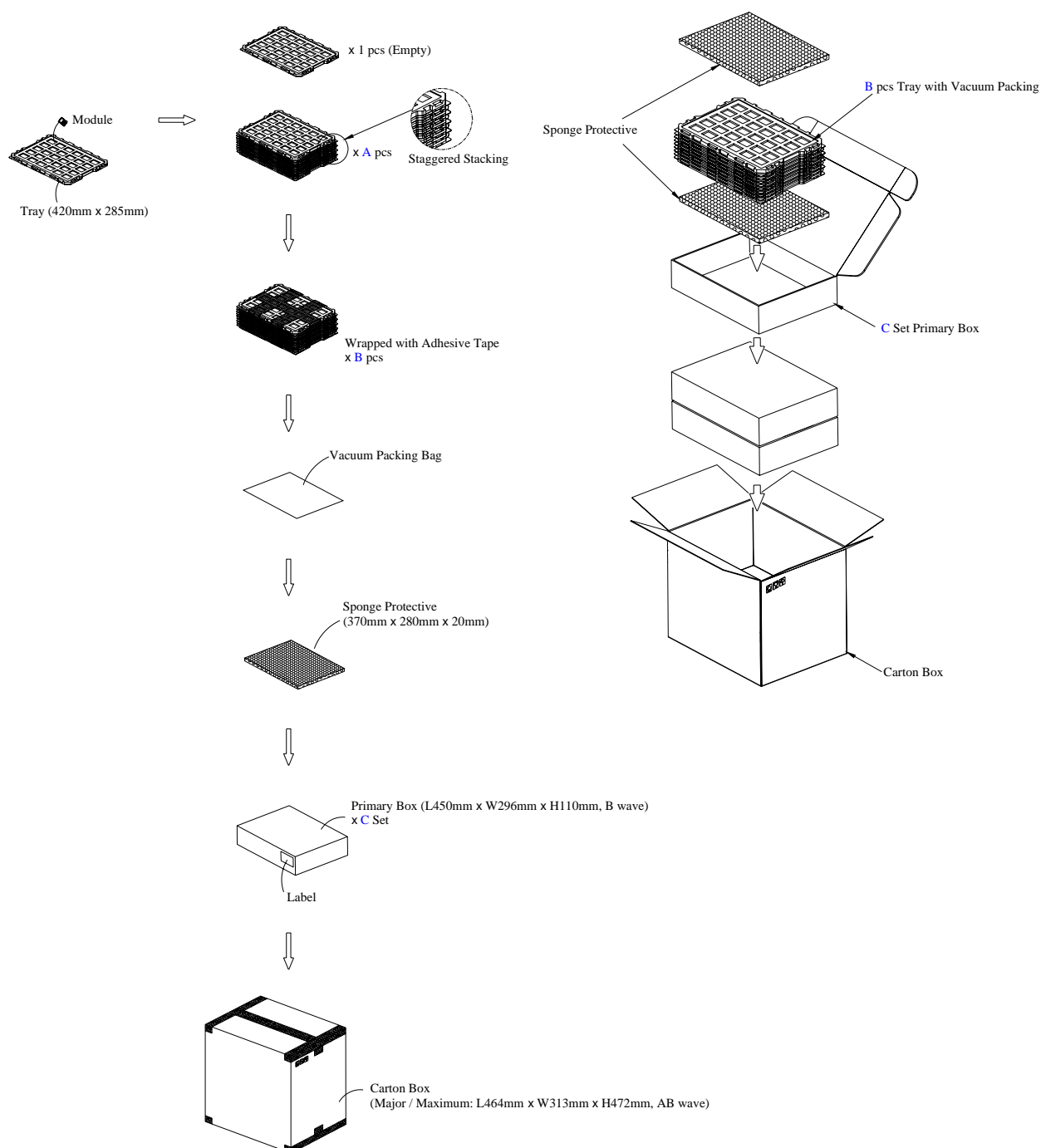
\*\* Definition of W & L &  $\Phi$  (Unit: mm):  $\Phi = (a + b) / 2$



## 6.3.3 Pattern Check (Display On) in Active Area

Check Item	Classification	Criteria
Flicker	Major	Not Allowable
No Display	Major	
Missing Line	Major	
Pixel Short	Major	
Darker Pixel	Major	
Wrong Display	Major	
Un-uniform	Major	

## 7. Package Specifications



Item	Quantity
<b>Module</b>	<b>420 per Primary Box</b>
<b>Holding Trays (A)</b>	<b>20 per Primary Box</b>
<b>Total Trays (B)</b>	<b>21 per Primary Box (Including 1 Empty Tray)</b>
<b>Primary Box (C)</b>	<b>1~4 per Carton (4 as Major / Maximum)</b>

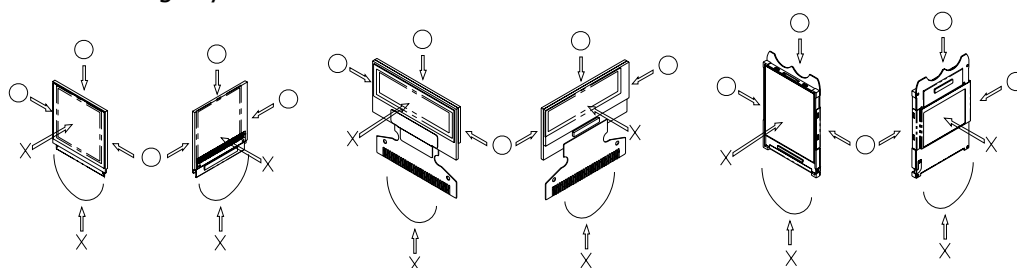
## 8. Precautions When Using These OEL Display Modules

### 8.1 Handling Precautions

- 1) Since the display panel is being made of glass, do not apply mechanical impacts such as dropping from a high position.
- 2) If the display panel is broken by some accident and the internal organic substance leaks out, be careful not to inhale nor lick the organic substance.
- 3) If pressure is applied to the display surface or its neighborhood of the OEL display module, the cell structure may be damaged and be careful not to apply pressure to these sections.
- 4) The polarizer covering the surface of the OEL display module is soft and easily scratched. Please be careful when handling the OEL display module.
- 5) When the surface of the polarizer of the OEL display module has soil, clean the surface. It takes advantage of by using following adhesion tape.
  - \* Scotch Mending Tape No. 810 or an equivalent

Never try to breathe upon the soiled surface nor wipe the surface using cloth containing solvent such as ethyl alcohol, since the surface of the polarizer will become cloudy.  
Also, pay attention that the following liquid and solvent may spoil the polarizer:

  - \* Water
  - \* Ketone
  - \* Aromatic Solvents
- 6) Hold OEL display module very carefully when placing OEL display module into the system housing. Do not apply excessive stress or pressure to OEL display module. And, do not over bend the film with electrode pattern layouts. These stresses will influence the display performance. Also, secure sufficient rigidity for the outer cases.



- 7) Do not apply stress to the driver IC and the surrounding molded sections.
- 8) Do not disassemble nor modify the OEL display module.
- 9) Do not apply input signals while the logic power is off.
- 10) Pay sufficient attention to the working environments when handling OEL display modules to prevent occurrence of element breakage accidents by static electricity.
  - \* Be sure to make human body grounding when handling OEL display modules.
  - \* Be sure to ground tools to use or assembly such as soldering irons.
  - \* To suppress generation of static electricity, avoid carrying out assembly work under dry environments.
  - \* Protective film is being applied to the surface of the display panel of the OEL display module. Be careful since static electricity may be generated when exfoliating the protective film.
- 11) Protection film is being applied to the surface of the display panel and removes the protection film before assembling it. At this time, if the OEL display module has been stored for a long period of time, residue adhesive material of the protection film may remain on the surface of the display panel after removed of the film. In such case, remove the residue material by the method introduced in the above Section 5).
- 12) If electric current is applied when the OEL display module is being dewed or when it is placed under high humidity environments, the electrodes may be corroded and be careful to avoid the above.

### 8.2 Storage Precautions

- 1) When storing OEL display modules, put them in static electricity preventive bags avoiding exposure to direct sun light nor to lights of fluorescent lamps. and, also, avoiding high temperature and high

humidity environment or low temperature (less than 0 °C) environments. (We recommend you to store these modules in the packaged state when they were shipped from Zhengzhou Zhongjingyuan Electronic Technology Co., LTD.)

At that time, be careful not to let water drops adhere to the packages or bags nor let dewing occur with them.

- 2) If electric current is applied when water drops are adhering to the surface of the OEL display module, when the OEL display module is being dewed or when it is placed under high humidity environments, the electrodes may be corroded and be careful about the above.

### 8.3 Designing Precautions

- 1) The absolute maximum ratings are the ratings which cannot be exceeded for OEL display module, and if these values are exceeded, panel damage may be happen.
- 2) To prevent occurrence of malfunctioning by noise, pay attention to satisfy the  $V_{IL}$  and  $V_{IH}$  specifications and, at the same time, to make the signal line cable as short as possible.
- 3) We recommend you to install excess current preventive unit (fuses, etc.) to the power circuit ( $V_{DD}$ ). (Recommend value: 0.5A)
- 4) Pay sufficient attention to avoid occurrence of mutual noise interference with the neighboring devices.
- 5) As for EMI, take necessary measures on the equipment side basically.
- 6) When fastening the OEL display module, fasten the external plastic housing section.
- 7) If power supply to the OEL display module is forcibly shut down by such errors as taking out the main battery while the OEL display panel is in operation, we cannot guarantee the quality of this OEL display module.
- 8) The electric potential to be connected to the rear face of the IC chip should be as follows: SSD1320
  - \* Connection (contact) to any other potential than the above may lead to rupture of the IC.

### 8.4 Precautions when disposing of the OEL display modules

- 1) Request the qualified companies to handle industrial wastes when disposing of the OEL display modules. Or, when burning them, be sure to observe the environmental and hygienic laws and regulations.

### 8.5 Other Precautions

- 1) When an OEL display module is operated for a long of time with fixed pattern may remain as an after image or slight contrast deviation may occur. Nonetheless, if the operation is interrupted and left unused for a while, normal state can be restored. Also, there will be no problem in the reliability of the module.
- 2) To protect OEL display modules from performance drops by static electricity rapture, etc., do not touch the following sections whenever possible while handling the OEL display modules.
  - \* Pins and electrodes
  - \* Pattern layouts such as the FPC
- 3) With this OEL display module, the OEL driver is being exposed. Generally speaking, semiconductor elements change their characteristics when light is radiated according to the principle of the solar battery. Consequently, if this OEL driver is exposed to light, malfunctioning may occur.
  - \* Design the product and installation method so that the OEL driver may be shielded from light in actual usage.
  - \* Design the product and installation method so that the OEL driver may be shielded from light during the inspection processes.
- 4) Although this OEL display module stores the operation state data by the commands and the indication data, when excessive external noise, etc. enters into the module, the internal status may be changed. It therefore is necessary to take appropriate measures to suppress noise generation or to protect from influences of noise on the system design.
- 5) We recommend you to construct its software to make periodical refreshment of the operation

statuses (re-setting of the commands and re-transference of the display data) to cope with catastrophic noise.

**Warranty:**

The warranty period shall last twelve (12) months from the date of delivery. Buyer shall be completed to assemble all the processes within the effective twelve (12) months. Zhengzhou Zhongjingyuan Electronic Technology Co., LTD. shall be liable for replacing any products which contain defective material or process which do not conform to the product specification, applicable drawings and specifications during the warranty period. All products must be preserved, handled and appearance to permit efficient handling during warranty period. The warranty coverage would be exclusive while the returned goods are out of the terms above.

**Notice:**

No part of this material may be reproduced or duplicated in any form or by any means without the written permission of Zhengzhou Zhongjingyuan Electronic Technology Co., LTD. Zhengzhou Zhongjingyuan Electronic Technology Co., LTD. reserves the right to make changes to this material without notice. Zhengzhou Zhongjingyuan Electronic Technology Co., LTD. does not assume any liability of any kind arising out of any inaccuracies contained in this material or due to its application or use in any product or circuit and, further, there is no representation that this material is applicable to products requiring high level reliability, such as, medical products. Moreover, no license to any intellectual property rights is granted by implication or otherwise, and there is no representation or warranty that anything made in accordance with this material will be free from any patent or copyright infringement of a third party. This material or portions thereof may contain technology or the subject relating to strategic products under the control of Foreign Exchange and Foreign Trade Law of Taiwan and may require an export license from the Ministry of International Trade and Industry or other approval from another government agency.