

DM-ADTTR-025

DISPLAY ADAPTER FOR HDMI TO MIPI DSI

Revision History

Revision	Date	Author	Change Description
1.0	25/10/2022	Stan	New Create

Table of Contents

DM-ADTTR-025	1
Table of Contents	3
1. DM-ADTTR-025 Adapter	4
1.1. Over View	4
1.2. Main Features	4
1.3. External Pins	5
1.3.1. Pin Description	5
1.4. Electrical Characteristics	7
1.5. Package	7
1.5.1. Dimension	7
1.5.2. Detail of board	8
2. Adapter Contents	8
2.1. Cable	8
2.1.1. Pin Layout	8
3. Configuration Reference	8
4. Adaptive Screens	9
5. Support and Q&A	9

1. DM-ADTTR-025 Adapter

1.1. Over View

DM-ADTTR-025 is a Mini HDMI to 4-Lane MIPI DSI Driver, Compliant with DCS1.02, D-PHY1.2& DSI1.02 &CSI-2 1.0 , 1 Clock Lane, and 1~4 Configurable Data Lanes(80Mb/s~1.5Gb/s per Data Lane) per port , Compliant with the HDMI 1.4 specification with TMDS data rates up to 3.4Gbps per channel, Support HDCP 1.4.

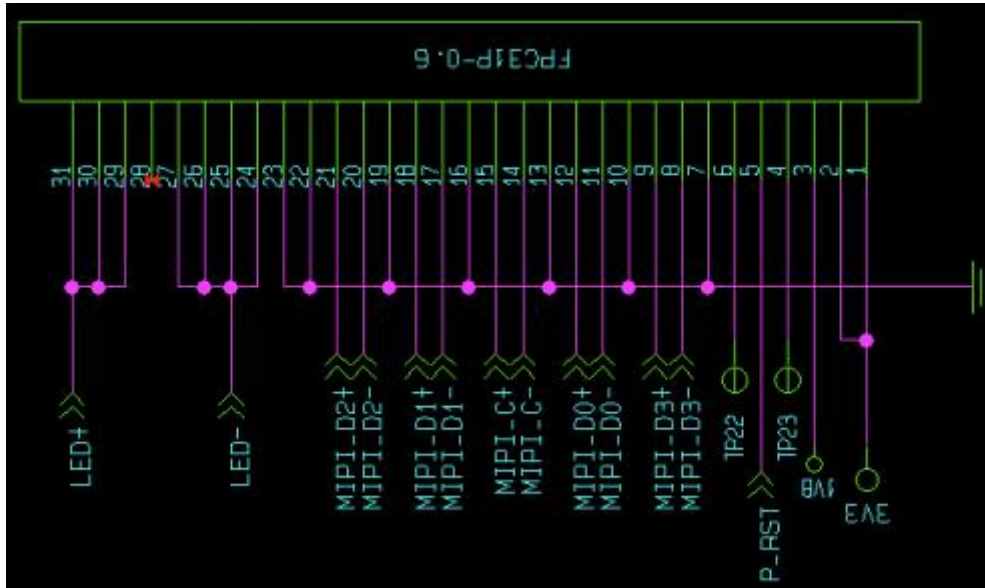
1.2. Main Features

Item	Specification	Unit
Function	HDMI to 4-Lane MIPI(DCS1.02, D-PHY1.2& DSI1.02 &CSI-2 1.0)	
Input interface	Mini HDMI	
Out interface	4-Lane MIPI (CFPC0310-31Pin-0.3)	
Driver IC	/	
Resolution	480*480	
Display Module	Single	
OS Support	Raspberry Pi/Windows	
Operation Temperature	-20°C~+60°C	
Outline	50.0*46.0*4.8	mm

1.3. External Pins

The DM-ADTTR-025 has three interface, the input interface is a Mini HDMI connector, and the output interface is a 4-Lane MIPI DSI connector, the last is Power connector (Micro USB).

1.3.1. Pin Description



Connector: CFPC0310-31Pin-0.3

Table 1-1

PIN	SYMBOL	DESCRIPTION
1	3V3	+3V3
2	3V3	+3V3
3	1V8	+1V8
4	NC	NC
5	PANEL_RST	MIPI Panel Reset
6	NC	NC
7	GND	Ground
8	MIPI_D3-	MIPI Data Lane-3 Negative Output

9	MIPI_D3+	MIPI Data Lane-3 Positive Output
10	GND	Ground
11	MIPI_D0-	MIPI Data Lane-0 Negative Output
12	MIPI_D0+	MIPI Data Lane-0 Positive Output
13	GND	Ground
14	MIPI_C-	MIPI Data Lane-C Negative Output
15	MIPI_C+	MIPI Data Lane-C Positive Output
16	GND	Ground
17	MIPI_D1-	MIPI Data Lane-1 Negative Output
18	MIPI_D1+	MIPI Data Lane-1 Positive Output
19	GND	Ground
20	MIPI_D2-	MIPI Data Lane-2 Negative Output
21	MIPI_D2+	MIPI Data Lane-2 Positive Output
22	GND	Ground
23	GND	GND
24	LED-	LED Cathode (Negative)
25	LED-	LED Cathode (Negative)
26	LED-	LED Cathode (Negative)
27	LED-	LED Cathode (Negative)
28	NC	NC
29	LED+	LED Anode (Positive)
30	LED+	LED Anode (Positive)
31	LED+	LED Anode (Positive)

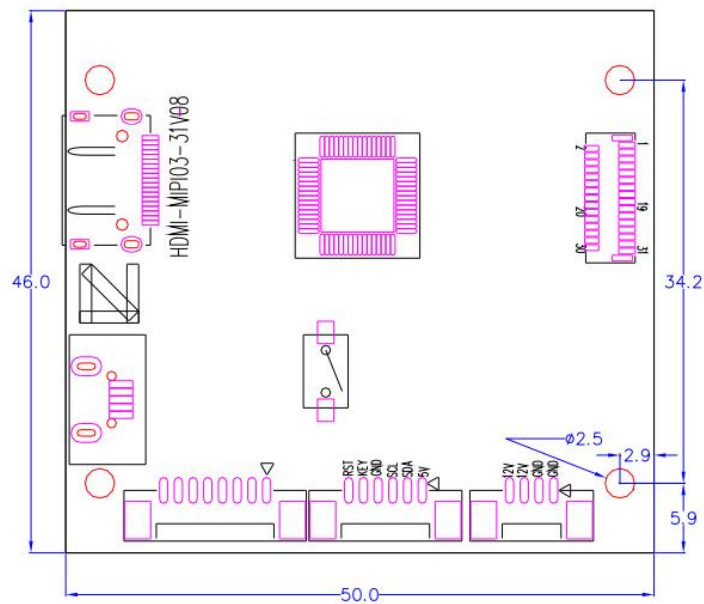
1.4. Electrical Characteristics

Item	Min.	Typ.	Max.	Unit
Power Supply1		5		V
Power Supply2		12		
Output Voltage		3.3/1.8		V
Current limit1		2@Supply1		A
Current limit2		1@Supply2		A

You can use Power supply1 or Power supply2

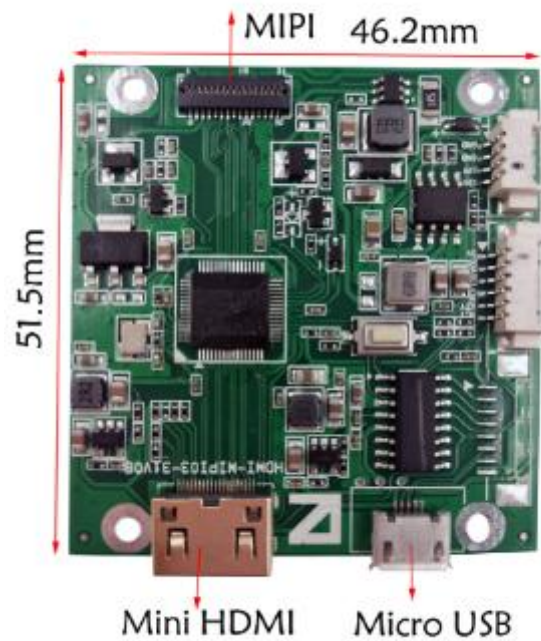
1.5. Package

1.5.1. Dimension



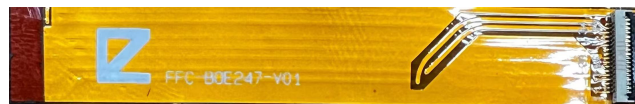
Unit: mm

1.5.2. Detail of board



2. Adapter Contents

2.1. Cable



2.1.1. Pin Layout

3. Configuration Reference

4. Adaptive Screens

[DM-TFTR247-451](#) 2.47" IPS 480X480 Octagonal Shape Round U/D/L/R free TFT - MIPI

5. Support and Q&A

Q:is it possible to get a board manufactured with these inductors replaced?

A:We do not recommend that users change the boards themselves.

<http://www.displaymodule.com/pages/faq>