

DM-ADTTR-019

**DISPLAY ADAPTER FOR HDMI TO
TYPE-C WITH DP AND PD FUNCTION**

Contents

- 1 Revision History
- 2 Main Features
- 3 Dimension
- 4 Connector instruction
- 5 Warranty and Conditions

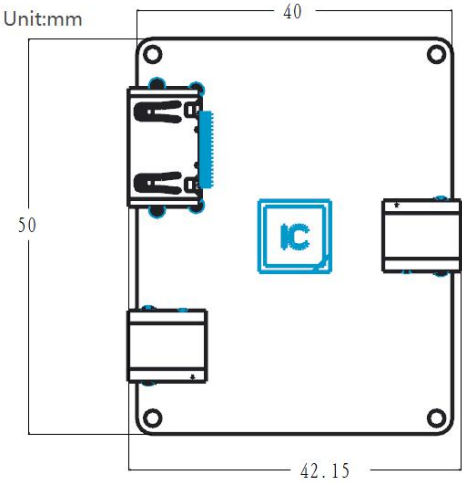
1 Revision History

Date	Changes
2020-04-02	First release

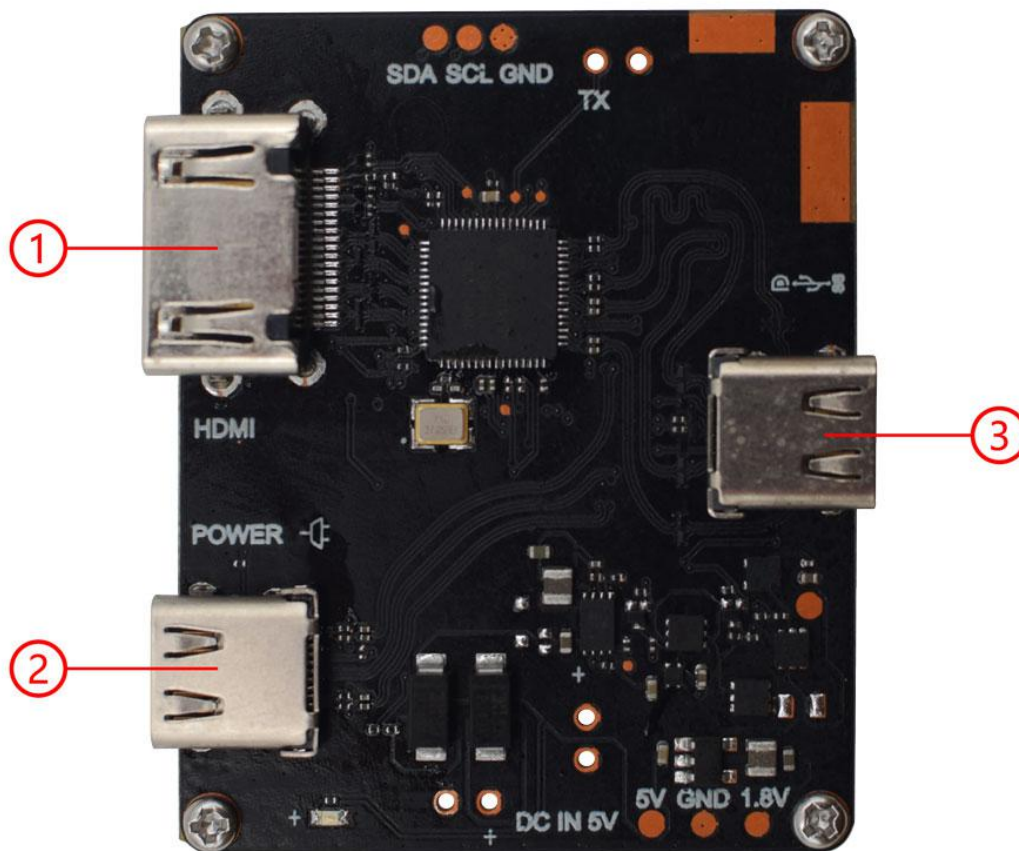
2 Main Features

Item	Specification
HDMI Input	Compatible with HDMI 2.0
	Resolution up to 4Kx2K@60Hz
	HDCP 1.4/2.2.
Type C Input	Charging Port with 5V supply
	Only SINK mode is Supported
	Compatible with Type C R1.2 and USB PD R3.0
	Support USB2.0 when connect with type A USB2.0 to type C cable
	Promotion to USB3.1 Gen1 when connect with Type A/C USB3.0 to type C cable. (It ONLY support USB3.1 in one face, DON'T support type C reverse plug in)
Type C output	Full compatible with type C R1.2
	Displayport Alt mode resolution up to 4Kx2K@60Hz
	USB3.1 Gen1 and USB2.0 with reversible plug in
	Displayport and USB3.1 Gen1 concurrent work
	Support USB PD3.0,Power Deliver with 5V
Dimension	50 x 42.15 x 7.1 mm

3 Dimension



4 Connector instruction



①: HDMI Input

Connect to PC, Notebook, and other HDMI source via HDMI plug to plug cable.

②: Type-C Input

Connect to 5V adaptor, or Connect to USB Host, to get 5V power and USB function enable

③: Type-C Output

Connect to AR/VR Glasses, or type C Display devices.

5 Warranty and Conditions

<http://www.displaymodule.com/pages/faq> HYPERLINK
"http://www.displaymodule.com/pages/faq"