

**DM-ADTTR-016
DISPLAY ADAPTER FOR
HDMI TO MIPI DSI**

Contents

1	Revision History	3
2	Main Features	3
3	Connector instruction	4
4	MIPI DSI Pin description	5
5	Electric Characteristics	6
6	Warranty and Conditions	6

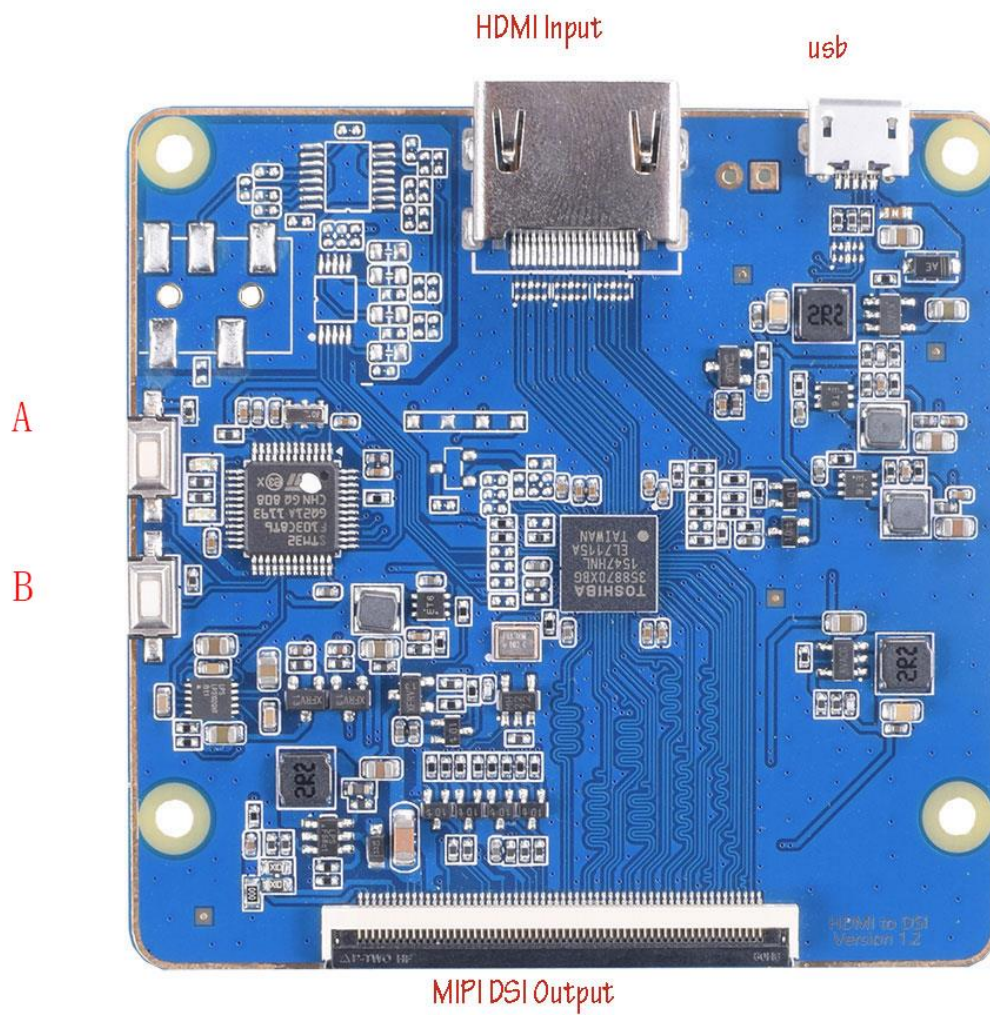
1 Revision History

Date	Changes
2019-01-15	First release
2019-06-12	Add two display port version

2 Main Features

Item	Specification	Unit
HDMI to MIPI	60pin two channel 4lane MIPI output	
HDMI	A Type 2.0 ,1.4	
MCU	STM32F103	
Video bridge IC	Toshiba 358870	
Maximum Resolution	4086*2160	
Dimension	Match with Raspberry PI for 4 screw holes	
Power supply	USB	
Keys	Display switch ,Backlight adjustment	
Option Menu	No	
Size	65x64	mm

3 Connector instruction



A : Backlight adjustment key

B : Double screen switching between divided display and display same content

4 MIPI DSI Pin description

Pin No.	Symbol	Function Description
1	GND	Ground
2	DSI1_D3_N	Negative MIPI differential data input. (Data lane3)
3	DSI1_D3_P	Positive MIPI differential data input. (Data lane3)
4	GND	Ground
5	DSI1_D2_N	Negative MIPI differential data input. (Data lane2)
6	DSI1_D2_P	Positive MIPI differential data input. (Data lane2)
7	GND	Ground
8	DSI1_CK_N	Negative MIPI differential clock input.
9	DSI1_CK_P	Positive MIPI differential clock input.
10	GND	Ground
11	DSI1_D1_N	Negative MIPI differential data input. (Data lane1)
12	DSI1_D1_P	Positive MIPI differential data input. (Data lane1)
13	GND	Ground
14	DSI1_D0_N	Negative MIPI differential data input. (Data lane0)
15	DSI1_D0_P	Positive MIPI differential data input. (Data lane0)
16	GND	Ground
17	DSI0_D3_N	Negative MIPI differential data input. (Data lane3)
18	DSI0_D3_P	Positive MIPI differential data input. (Data lane3)
19	GND	Ground
20	DSI0_D2_N	Negative MIPI differential data input. (Data lane2)
21	DSI0_D2_P	Positive MIPI differential data input. (Data lane2)
22	GND	Ground
23	DSI0_CK_N	Negative MIPI differential clock input.
24	DSI0_CK_P	Positive MIPI differential clock input.
25	GND	Ground
26	DSI0_D1_N	Negative MIPI differential data input. (Data lane1)
27	DSI0_D1_P	Positive MIPI differential data input. (Data lane1)
28	GND	Ground
29	DSI0_D0_N	Negative MIPI differential data input. (Data lane0)
30	DSI0_D0_P	Positive MIPI differential data input. (Data lane0)
31	GND	Ground
32	NC	No connection
33	3V3 S1	Power supply (3.3V)
34	3V3 S2	Power supply (3.3V)
35	NC	No connection
36	3V3 OUT	3.3V output
37	3V3 OUT	3.3V output
38	NC	No connection
39	VDD18V	VDD (1.8V)
40	NC	No connection
41	1V8 S1	Power supply (1.8V)
42	1V8 S2	Power supply (1.8V)

43	NC	No connection
44	GND	Ground
45	NC	No connection
46	GND	Ground
47	AVDD_5V8	Analog power
48	AVEE_5V8	Analog power
49	GND	Ground
50	NC	No connection
51	LEDVOUT	LED power output
52	LEDVOUT	LED power output
53	LEDVOUT	LED power output
54	NC	No connection
55	LED1	LED power
56	LED2	LED power
67	GND	Ground
68	GND	Ground
59	GND	Ground
60	GND	Ground

5 Electric Characteristics

Item	Symbol	Min	Typ	Max	Unit	Note
Micro USB Power input		4.5	-	5.5		V
Output Voltage			3.3			
MIPI Signal			+/- 5			V
Current			500			mA

6 Warranty and Conditions

<http://www.displaymodule.com/pages/faq>